



# ELECTRICAL DESIGN GROUP

ELECTRICAL BUILDING SERVICES CONSULTANTS

P.O. Box 15, SHERWOOD Q. 4075

Phone: (07) 3278 4375

Website: [www.edg.net.au](http://www.edg.net.au) Email: [brisbane@edg.net.au](mailto:brisbane@edg.net.au)

C3704a - EAGERS VW & CHERY, IPSWICH

C3704a-0001(A).xls

## ELECTRICAL SERVICES CONTRACT DOCUMENT SCHEDULE

REVISION A - 25 FEBRUARY 2026

ISSUING INFORMATION				DATE OF ISSUE							
				DAY	25						
				MONTH	02						
				YEAR	26						
				REASON FOR ISSUE	T						
A = APPROVAL				C = CONSTRUCTION				D = % DEVELOPED AS NOTED			
								P = PRELIMINARY			
								T = TENDER			

DISTRIBUTION				NUMBER OF COPIES							
WWW.EDG.NET.AU				1E							
WIM ARCHITECTS				1E							
MWH ELECTRICAL				1E							
P = PRINT				T = TRACING				D = DISC			
								E = EMAIL			
								F = FAX			

DOCUMENTS				REVISION							
C3704a-E01.dwg	LEGEND & DETAILS			A							
C3704a-E02.dwg	FLOOR PLAN			A							
C3704a-E03.dwg	REFLECTED CEILING PLAN			A							
C3704a-E04.dwg	NOTES			A							
C3704a-0001.xls	CONTRACT DOCUMENT SCHEDULE			A							
C3704a-0002.xls	EQUIPMENT SCHEDULE			A							
C3704a-0004.xls	DISTRIBUTION BOARD DB-A SCHEDULE			A							



# ELECTRICAL DESIGN GROUP

ELECTRICAL BUILDING SERVICES CONSULTANTS

P.O. Box 15, SHERWOOD Q. 4075

Phone: (07) 3278 4375 Fax: (07) 3716 0222

Web Site: [www.edg.net.au](http://www.edg.net.au) Email: [brisbane@edg.net.au](mailto:brisbane@edg.net.au)

C3704a - EAGERS VW & CHERY, IPSWICH

C3704a-0002(A).xls

## ELECTRICAL EQUIPMENT SCHEDULE

REVISION A - 25 FEBRUARY 2026

THE LIGHT FITTING SUPPLIER CONTACT DETAILS MAY BE AVAILABLE ON THE EDG WEBSITE VIA THE FOLLOWING LINK  
[www.edg.net.au/Links/Lighting.htm](http://www.edg.net.au/Links/Lighting.htm)

TYPE	LAMPS	DESCRIPTION	COLOUR / ACCESSORY	CATALOGUE No	REV
D1C	35W 4000K LED	RECESSED DOWNLIGHT	BLACK	LUMIQUI CEA1401 II	A
D2C	24W 4000K LED	RECESSED DOWNLIGHT	BLACK	LUMIQUI CEA13501 II	A
LF1	PROVIDE POWER FOR THE SUSPENDED CEILING FEATURE LIGHT. COORDINATE THE CONNECTION POINT ON SITE WITH THE FEATURE SUPPLIER.				A
LF2	PROVIDE POWER FOR THE SUSPENDED CEILING FEATURE LIGHT. COORDINATE THE CONNECTION POINT ON SITE WITH THE FEATURE SUPPLIER.				A
D1	9W 3000K LED	RECESSED DOWNLIGHT	WHITE	LUMIQUI CEJ61075-S	A
D2	12W 2700K LED	RECESSED DOWNLIGHT	WHITE	LUMIQUI CEJ61075-S	A
D3	15W 4000K LED	RECESSED DOWNLIGHT	WHITE	LUMIQUI CEJ61075-S	A
D4A	24W 4000K LED	RECESSED SQUARE DOWNLIGHT	BLACK	LUMIQUI CES5031C	A
D5B	2 X 35W 4000K LED	RECESSED RECTANGLE DOWNLIGHT	BLACK	LUMIQUI CES5031C	A
D6	10 X 2W 3500K LED	RECESSED 285 X 50 LINEAR FITTING	WHITE	LUMIQUI CES8210M II	A
F2	31W 4000K LED	RECESSED 600 X 600 PANEL LIGHT	BLACK	LUMIQUI CEP6060G5	A
P2	40W 3500K LED	1204 LINEAR PENDANT	WHITE	LUMIQUI CXUD5575G	A
W2	28W 2700K LED	RECESSED 1202 X 36 LINEAR FITTING	BLACK	LUMIQUI CXR3030-12	A



# ELECTRICAL DESIGN GROUP

ELECTRICAL BUILDING SERVICES CONSULTANTS

P.O. Box 15, SHERWOOD Q. 4075

Phone: (07) 3278 4375 Fax: (07) 3716 0222

Web Site: [www.edg.net.au](http://www.edg.net.au) Email: [brisbane@edg.net.au](mailto:brisbane@edg.net.au)

C3704a - EAGERS VW & CHERY, IPSWICH

C3704a-0002(A).xls

## ELECTRICAL EQUIPMENT SCHEDULE

REVISION A - 25 FEBRUARY 2026

THE LIGHT FITTING SUPPLIER CONTACT DETAILS MAY BE AVAILABLE ON THE EDG WEBSITE VIA THE FOLLOWING LINK  
[www.edg.net.au/Links/Lighting.htm](http://www.edg.net.au/Links/Lighting.htm)

TYPE	LAMPS	DESCRIPTION	COLOUR / ACCESSORY	CATALOGUE No	REV
LL		PROVIDE POWER FOR THE SUSPENDED CEILING FEATURE LIGHT. COORDINATE THE CONNECTION POINT ON SITE WITH THE FEATURE SUPPLIER.			A
LP		PROVIDE POWER FOR THE SUSPENDED CEILING FEATURE LIGHT. COORDINATE THE CONNECTION POINT ON SITE WITH THE FEATURE SUPPLIER.			A
E1	LED	EMERGENCY LIGHT: RECESSED NON-MAINTAINED EMERGENCY LIGHT. AS2293 CLASSIFICATION C0-D40 - C90-D40.	WHITE	CLEVERTRONICS CLIFE	A
EX	LED	EXIT LIGHT: MAINTAINED 24M VIEWING DISTANCE EXIT LIGHT C/W DIFFUSERS & DIRECTIONAL ARROWS AS SHOWN. CEILING SURFACE MOUNT OR WALL MOUNT BETWEEN 2100mm & 2700mm AFFL IF THERE IS NO VERTICAL SURFACE TO MOUNT THE FITTING ON WITHIN THIS RANGE CONFIRM THE MOUNTING HEIGHT WITH THE ENGINEER. PROVIDE A CUSTOM WHITE COUNTER LEAVER MOUNTING BRACKET AS REQUIRED AS2293 CLASSIFICATION C0-D8 - C90-E3.2.	WHITE	CLEVERTRONICS LUB PRO SM	A
SWITCH PANEL 1 (SP1)		WALL MOUNTED MULTI GANG SWITCH PANEL MOUNTED AT 1000mm AFFL UNLESS NOTED OTHERWISE.	WHITE	CLIPSAL C2000 SERIES FACEPLATE	A
SWITCH PANEL 2 (SP2)		WALL MOUNTED MULTI GANG SWITCH PANEL MOUNTED AT 1000mm AFFL UNLESS NOTED OTHERWISE.	WHITE	CLIPSAL C2000 SERIES FACEPLATE	A
LIGHTING CONTROL CHANNELS		LIGHTING CONTROL CHANNEL WITH ONE MANUAL SWITCH ON THE ASSOCIATED SWITCH PANEL PER SWITCH			A
ONE-WAY LIGHT SWITCH		ONE-WAY LIGHT SWITCH C/W CIRCUIT IDENTIFICATION ON THE FACEPLATE BEHIND THE SURROUND MOUNTED AT 1000mm AFFL UNLESS NOTED OTHERWISE.	WHITE	CLIPSAL C2000 SERIES FACEPLATE	A
CAT 6 COMMUNICATIONS OUTLET		RJ45 CAT-6 COMMUNICATIONS OUTLET, CABLED BACK TO THE COMMUNICATIONS RACK CR-A TERMINATED ONTO FACILITY PATCH PANELS VIA 4-PAIR CAT-6 UTP CABLE. MOUNT UP TO 3 RJ45 OUTLETS PER MULTI-GANG FACEPLATE WITH SEPARATE PERMANENT LABELLING FOR EACH OUTLET.	WHITE	CLIPSAL C2000 SERIES FACEPLATE	A
COMMUNICATIONS RACK CR-A		PROVIDE A NEW COMMUNICATIONS RACK CR-A C/W FIBER AND 12 CORE FIBER FROM THE EXISTING NISSAN BUILDING RACK UPGRADE THE NISSAN BUILDING FIBER AS REQUIRED. PROVIDE CR-A WITH PATCH PANELS TO ACCOMMODATE THE COMMUNICATIONS OUTLETS.			A



# ELECTRICAL DESIGN GROUP

ELECTRICAL BUILDING SERVICES CONSULTANTS

P.O. Box 15, SHERWOOD Q. 4075

Phone: (07) 3278 4375 Fax: (07) 3716 0222

Web Site: [www.edg.net.au](http://www.edg.net.au) Email: [brisbane@edg.net.au](mailto:brisbane@edg.net.au)

C3704a - EAGERS VW & CHERY, IPSWICH

C3704a-0002(A).xls

## ELECTRICAL EQUIPMENT SCHEDULE

REVISION A - 25 FEBRUARY 2026

THE LIGHT FITTING SUPPLIER CONTACT DETAILS MAY BE AVAILABLE ON THE EDG WEBSITE VIA THE FOLLOWING LINK  
[www.edg.net.au/Links/Lighting.htm](http://www.edg.net.au/Links/Lighting.htm)

TYPE	LAMPS	DESCRIPTION	COLOUR / ACCESSORY	CATALOGUE No	REV
SINGLE POWER OUTLET		SINGLE POWER OUTLET C/W CIRCUIT IDENTIFICATION ON THE FACEPLATE BEHIND THE SURROUND MOUNT AT 300mm AFFL U.N.O. RATING 10A U.N.O.	WHITE	CLIPSAL C2000 SERIES FACEPLATE	A
DOUBLE POWER OUTLET		DOUBLE POWER OUTLET C/W CIRCUIT IDENTIFICATION ON THE FACEPLATE BEHIND THE SURROUND MOUNT AT 300mm AFFL U.N.O. RATING 10A U.N.O.	WHITE	CLIPSAL C2000 SERIES FACEPLATE	A
SPECIAL PURPOSE OUTLET		SPECIAL PURPOSE OUTLET TYPE AS NOTED. MOUNT AT 1350mm AFFL U.N.O. RATING 20A U.N.O. CONNECT TO EQUIPMENT VIA FLEXIBLE CONDUIT.			A
DOUBLE POWER OUTLET (USB)		DOUBLE POWER OUTLET C/W USB CHARGER AND CIRCUIT IDENTIFICATION ON THE FACEPLATE BEHIND THE SURROUND MOUNT AT AB U.N.O. RATING 10A U.N.O.	WHITE	CLIPSAL 2000 SERIES + 30USBCM MECH	A
SIGN CONNECTION		COORDINATE THE LOCATION AND CONNECTION WITH THE SIGN CONTRACTOR ENSURING THE GPO / ISOLATORS ARE PROVIDED WITH APPROPRIATE WEATHER PROTECTION AND ARE CONCEALED FROM VIEW.			A
SINGLE-PHASE ISOLATOR		SINGLE-PHASE WEATHERPROOF ISOLATOR. MOUNT AT 1350mm AFFL U.N.O. RATING 20A U.N.O. CONNECT TO EQUIPMENT VIA FLEXIBLE CONDUIT.	-	CLIPSAL WHT20	A
THREE-PHASE ISOLATOR		THREE-PHASE WEATHERPROOF ISOLATOR. MOUNT AT 1350mm AFFL U.N.O. RATING 20A U.N.O. CONNECT TO EQUIPMENT VIA FLEXIBLE CONDUIT. "RSD" DENOTES ROLLER SHUTTER DOOR SUPPLY - COORDINATE LOCATION ONSITE WITH MOTOR.	-	CLIPSAL WHT35	A
FLOOR BOX TYPE 1 (FB1)		INSITU FLUSH FLOOR BOX C/W A DOUBLE GPOS+ FACILITY FOR A COMMUNICATIONS OUTLETS FACEPLATE . PROVIDE A 32 DIA CONDUIT C/W A SPARE DRAW WIRE FROM THE REAR OF THE COMMUNICATIONS FACEPLATE TO THE CEILING SPACE ABOVE THE COMMUNICATIONS RACK CR-A. PROVIDE THE GPOS AS PER THE STANDARD DESCRIPTIONS.	STAINLESS STEEL	ECD FB2SHD	A
DB-A		EXISTING DISTRIBUTION BOARD DB-A INTEGRAL TO THE EXISTING MSB TO BE UPGRADED WITH THE ADDITIONAL SWITCHGEAR AS PER THE DB-A SCHEDULE.			A
MSB		EXISTING MAIN SWITCHBOARD TO REMAIN AS IS.			A



# ELECTRICAL DESIGN GROUP

ELECTRICAL BUILDING SERVICES CONSULTANTS

P.O. Box 15, SHERWOOD Q. 4075

Phone: (07) 3278 4375

Website: [www.edg.net.au](http://www.edg.net.au) Email: [brisbane@edg.net.au](mailto:brisbane@edg.net.au)

C3704a - EAGERS VW & CHERY, IPSWICH

C3704a-0004(A).xls

DISTRIBUTION BOARD DB-A

REVISION A - 25 FEBRUARY 2026

							REV
CIRC	PH	CIRCUIT BREAKER (amps)	CONTROL EQUIPMENT	CABLE SIZE ( mm <sup>2</sup> )	LOCATION	CIRCUIT USE	
P1	1	20	RCBO	2.5	CHERY	WORKSTATION	A
P2	1	20	RCBO	2.5	CHERY	SHOWROOM	A
P3	1	20	RCBO	2.5	CHERY	REFRIGERATOR	A
P4	1	20	RCBO	2.5	CHERY	ZIP BOILER	A
P5	1	20	RCBO	2.5	CHERY	KITCHEN	A
P6	1	20	RCBO	2.5	CHERY	OFFICE	A
P7	1	20	RCBO	2.5	CHERY	SHOWROOM	A
P8	1	20	RCBO	2.5	CHERY	SHOWROOM	A
P9	1	20	RCBO	2.5	VW	DISPLAY	A
P10	1	20	RCBO	2.5	VW	DISPLAY	A
P11	1	20	RCBO	2.5	VW	REFRIGERATOR	A
P12	1	20	RCBO	2.5	VW	ZIP BOILER	A
P13	1	20	RCBO	2.5	VW	CUSTOMER	A
P14	1	20	RCBO	2.5	VW	OFFICE	A
P15	1	20	RCBO	2.5	VW	DELIVERY	A
P16	1	20	RCBO	2.5	BACK OF HOUSE	CR-A	A
L1	1	20	RCBO	2.5	CHERY	SIGN	A
L2	1	20	RCBO	2.5	CHERY	SIGN	A
L3	1	20	RCBO	2.5	CHERY	SECURITY	A
L4	1	20	RCBO	4.0	CHERY	LIGHTING	A
L5	1	20	RCBO	4.0	CHERY	LIGHTING	A
L6	1	32	RCBO	6.0	CHERY	PYLON	A
L7	1	20	RCBO	2.5	VW	LIGHTING	A
L8	1	20	RCBO	2.5	VW	LIGHTING	A
L9	1	20	RCBO	2.5	VW	LIGHTING	A
L10	1	20	RCBO	2.5	VW	LIGHTING	A
L11	1	20	RCBO	2.5	VW	LIGHTING	A
L12	1	20	RCBO	2.5	VW	LIGHTING	A
L13	1	20	RCBO PE CELL ON DUSK OFF DAWN	2.5	EXTERNAL	PYLON	A
L14	1	20	RCBO PE CELL ON DUSK OFF DAWN	2.5	EXTERNAL	SIGN	A
L15	1	20	RCBO PE CELL ON DUSK OFF DAWN	2.5	EXTERNAL	SIGN	A
L16	1	20	RCBO	2.5	VW	SIGN	A
L17					CHERY	SIGN	A

☐

USB

⌒

 $\emptyset$ 

FBx

SPx

 $\angle$ 

---

— — —

DB-x - Py



**1**



516

EX

D1C C

D2C C



D1 C

D2 ☐D3 ☐D4A ☐

D58

D6 ☐

F2

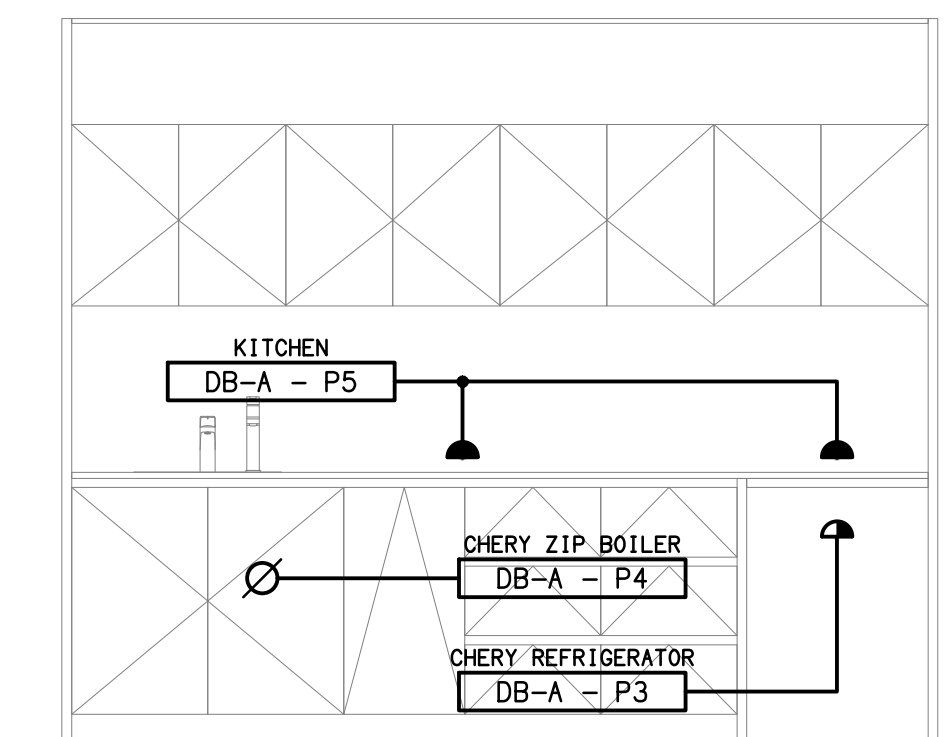
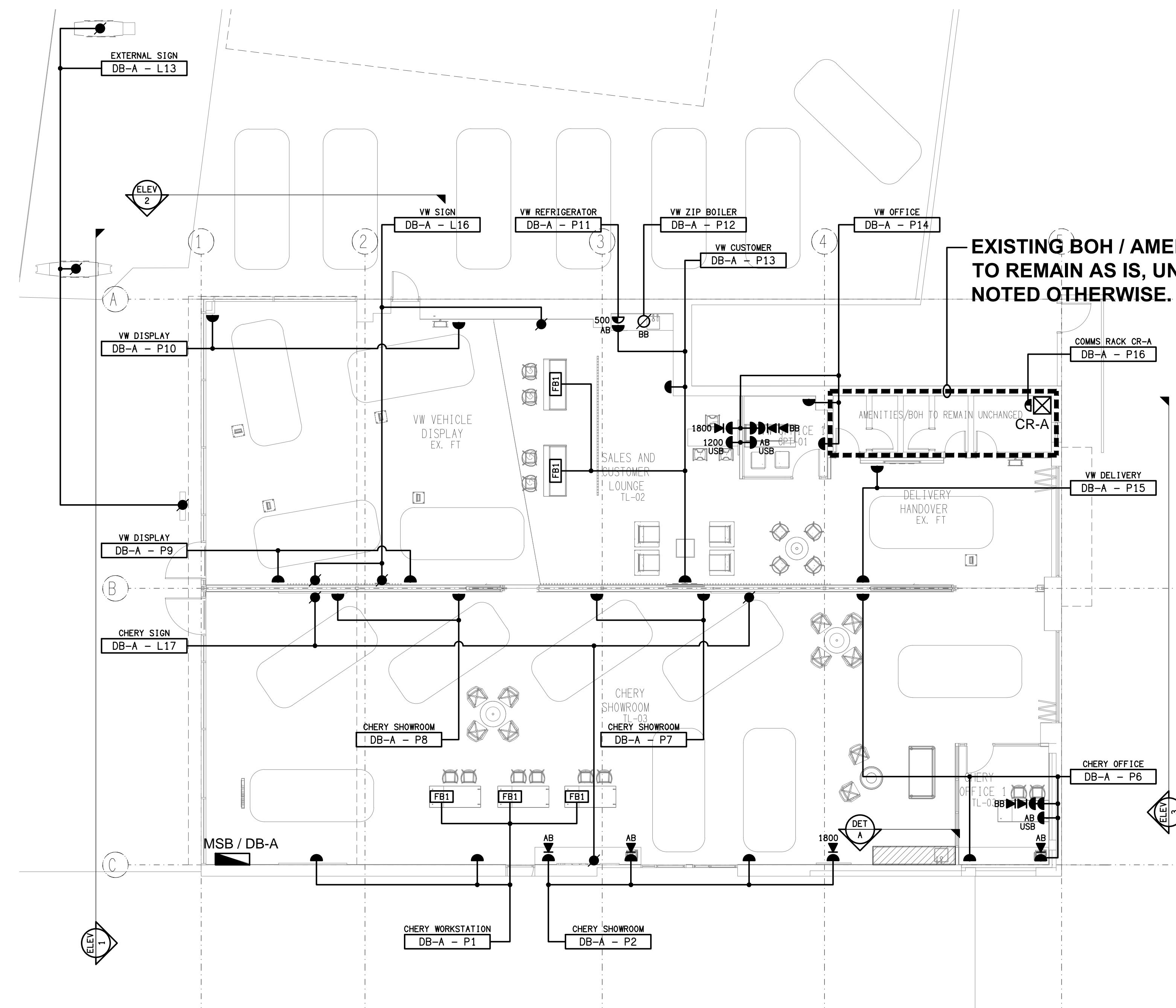
P2



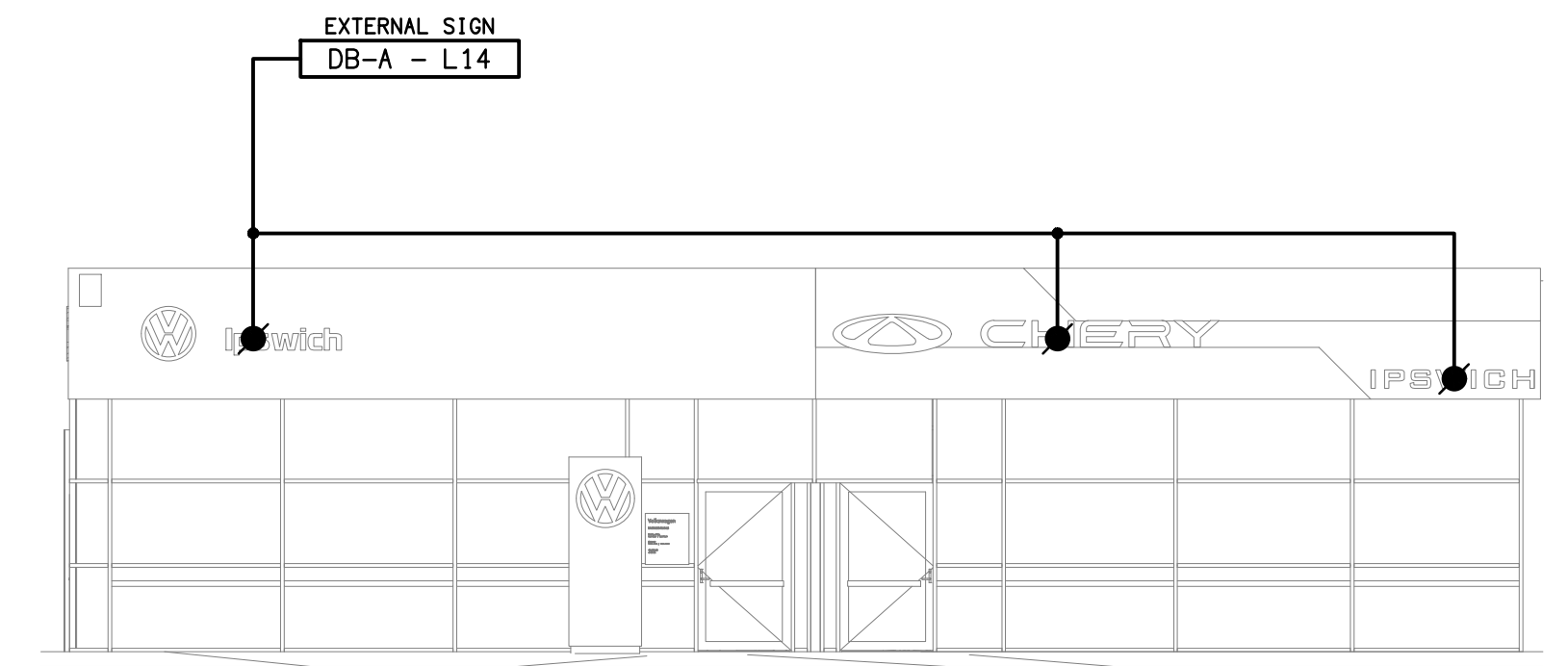
A diagram showing a tree structure. At the top is a node labeled 'LL'. A vertical line connects this node to a horizontal line below it. From the left end of this horizontal line, a vertical line extends downwards to another node labeled 'LL'. From the right end of the horizontal line, a vertical line extends downwards to another node labeled 'LL'.



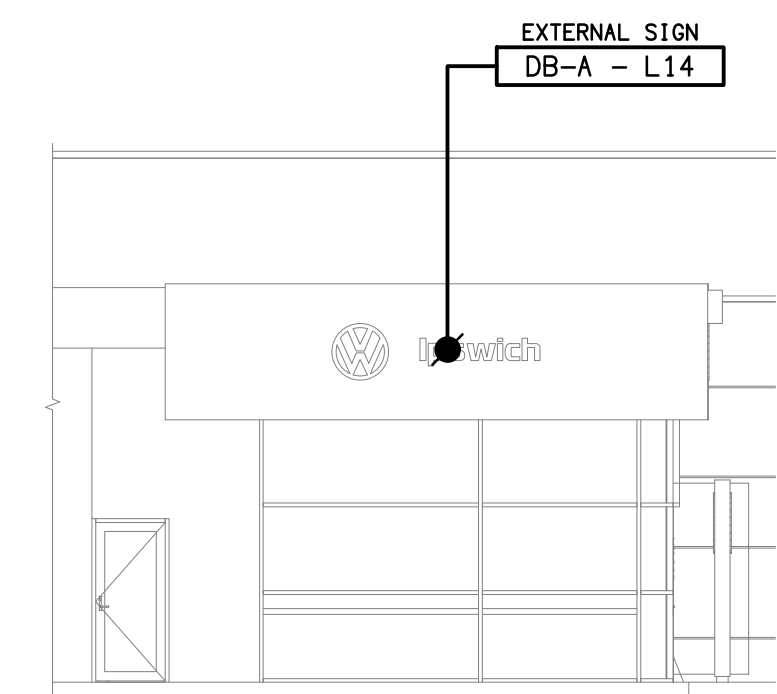
REVISION:  
**A**



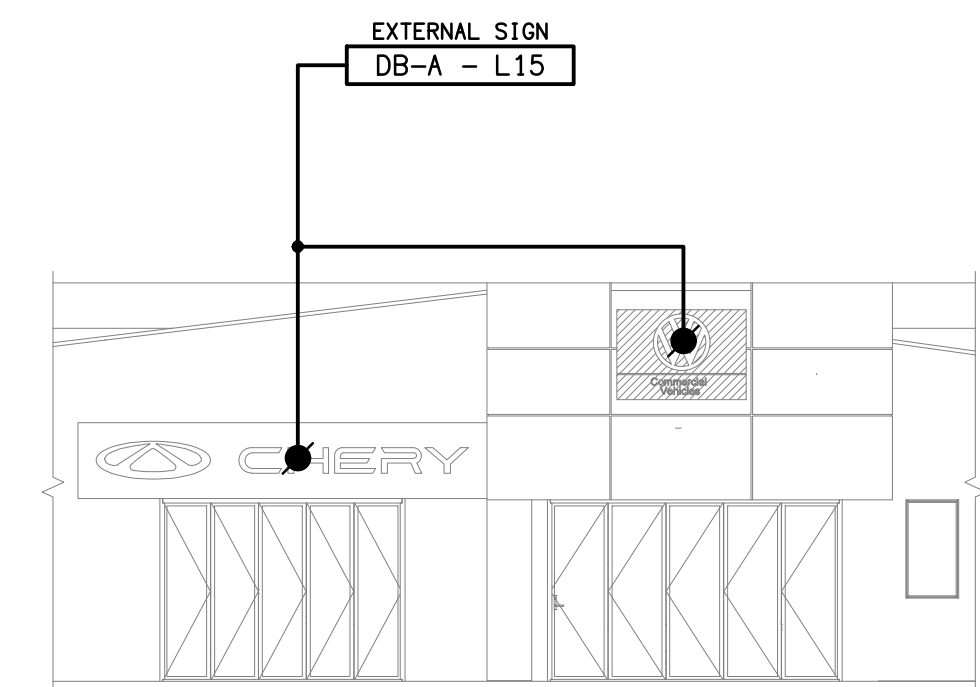
**DETAIL A**  
CHERY KITCHENETTE ELEVATION  
SCALE 1:25



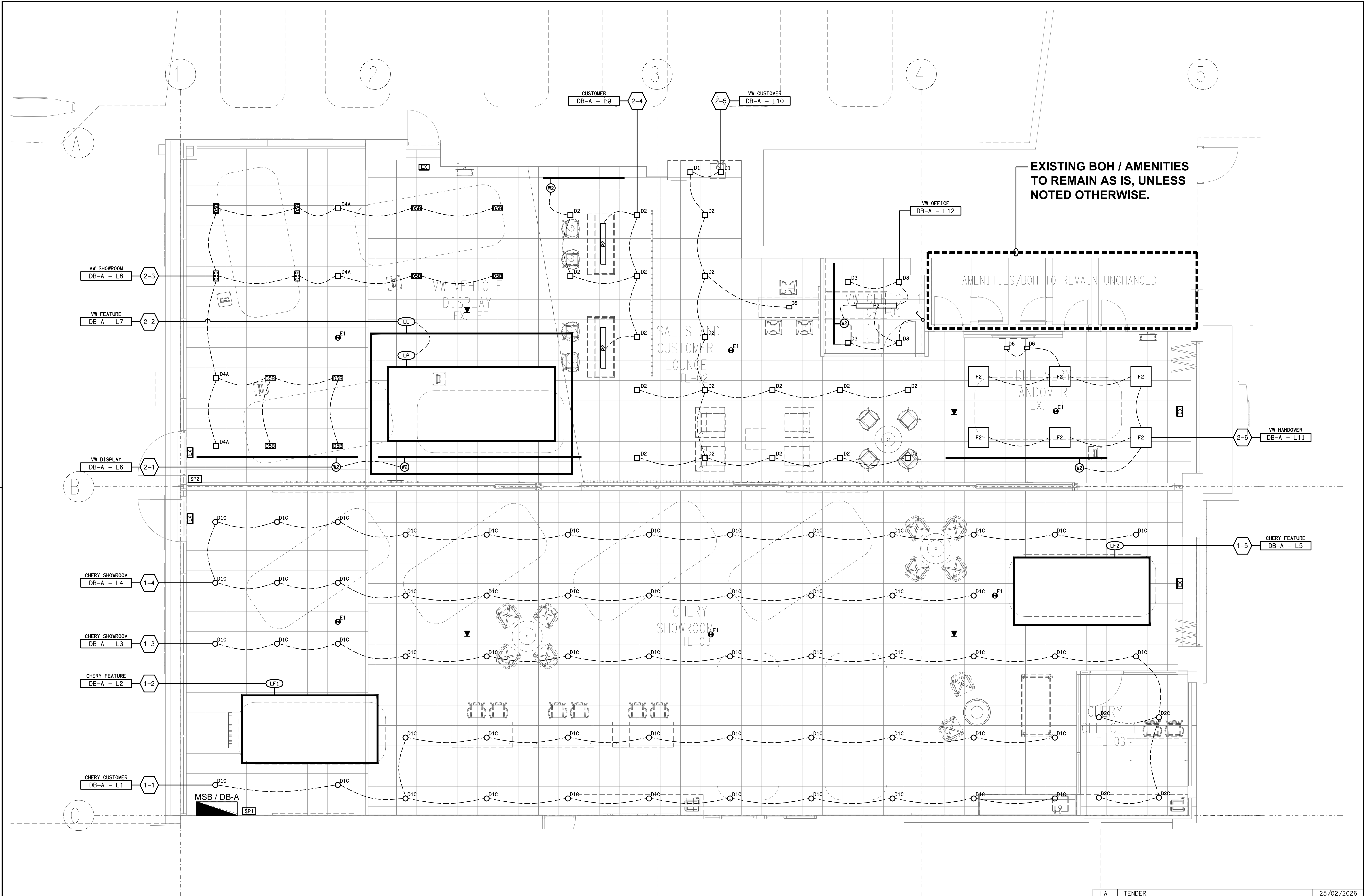
**ELEVATION 1**  
EXTERNAL BUILDING  
SCALE 1:100



**ELEVATION 2**  
EXTERNAL BUILDING  
SCALE 1:100



**ELEVATION 3**  
EXTERNAL BUILDING  
SCALE 1:100





NOTES

1. EXTENT OF WORKS

THE ELECTRICAL SERVICES SUB-CONTRACT INCLUDES BUT IS NOT LIMITED TO THE FOLLOWING:

- SUPPLY AND INSTALLATION OF ALL COMPONENTS FORMING PART OF THE ELECTRICAL SERVICES.
- CO-ORDINATION.
- INSPECTIONS.
- TESTING AND COMMISSIONING.
- MAINTENANCE.
- AS BUILT DRAWINGS.
- OPERATION AND MAINTENANCE MANUAL.
- CABLING, CABLE SUPPORT SYSTEMS AND ACCESS.
- POWER DISTRIBUTION.
- LIGHTING.
- COMMUNICATIONS CABLING.
- ALL MINOR COMPONENTS AND INCIDENTAL WORKS NOT SPECIFICALLY REFERRED TO, HOWEVER NECESSARY TO COMPLETE THE ELECTRICAL SERVICES INSTALLATION SUCH THAT IT IS HANDED OVER COMPLETE, OPERATIONAL AND FIT FOR THE INTENDED USE.

ALL OF THE EXISTING ELECTRICAL SERVICES ARE TO BE REMOVED INCLUDING ANY EXISTING ELECTRICAL SERVICES WITHIN THE AREA OF THE EXISTING SITE THAT IS TO BE RESUMED INTO THE ROAD RESERVE.

SUPPLY ALL LABOUR, MATERIALS, EQUIPMENT, AND ALL OTHER ITEMS, WHETHER MENTIONED IN DETAIL OR NOT, REQUIRED FOR THE SATISFACTORY COMPLETION OF THE ELECTRICAL SERVICES INSTALLATION, LEAVING IN FULL WORKING ORDER TO THE SATISFACTION OF THE PROJECT MANAGER.

SUPPLY ALL LABOUR, MATERIALS, EQUIPMENT, AND ALL OTHER ITEMS, WHETHER MENTIONED IN DETAIL OR NOT, REQUIRED FOR THE SATISFACTORY COMPLETION OF THE ELECTRICAL SERVICES INSTALLATION, LEAVING IN FULL WORKING ORDER TO THE SATISFACTION OF THE PROJECT MANAGER.

ACCEPT FULL RESPONSIBILITY FOR LIASING, ARRANGING AND CO-ORDINATION OF ALL WORKS THAT HAVE AN EFFECT ON OR WILL BE AFFECTED BY THE ELECTRICAL SERVICES.

2. WORKMANSHIP

ENSURE THAT THE ELECTRICAL WORK IS PERFORMED BY THE HOLDER OF A CURRENT ELECTRICAL SUB CONTRACTOR LICENSE AND THE SERVICES COVERED BY THE ACMA IS PERFORMED BY THE HOLDER OF THE APPROPRIATE CURRENT ACMA LICENSE. ENSURE THE INSTALLATION AND ALL COMPONENTS, FIXTURES, FITTINGS, OUTLETS AND CABLES ARE SUPPLIED AND INSTALLED TO A HIGH STANDARD THROUGHOUT, AND INSTALLED IN A NEAT AND TRADESMAN LIKE MANNER, TO THE CURRENT INDUSTRY STANDARDS. ENSURE ALL MATERIALS AND COMPONENTS OF A SIMILAR TYPE ARE OF THE SAME MANUFACTURER AND INSTALLED IN A UNIFORM MANNER.

IT IS THE ELECTRICAL SUB CONTRACTOR'S RESPONSIBILITY TO ENSURE THAT THE INSTALLATION IS FIT FOR PURPOSE AND IS PROVIDED AS A COMPLETE WORKING INSTALLATION. IT IS THE ELECTRICAL SUB CONTRACTOR'S RESPONSIBILITY TO PROVIDE ALL COMPONENTS, FITTINGS, FIXTURES, SYSTEMS, PROGRAMMING ETC IRRESPECTIVE OF THE LEVEL DETAILED IN THE DOCUMENTS SUCH THAT THE INSTALLATION IS PROVIDED AS A COMPLETE WORKING INSTALLATION.

CONCEAL ALL WIRING AND CONDUITS. EXPOSED CABLING OR CONDUITS ARE GENERALLY NOT ACCEPTABLE. IT IS NOTED THAT CHASING AND REINSTATEMENT WILL BE REQUIRED. ENSURE ALL COMPONENTS, EQUIPMENT AND MATERIALS SUPPLIED ARE NEW, UNUSED, DESIGNED AND SELECTED TO ENSURE SATISFACTORY OPERATION UNDER VARYING ATMOSPHERIC, CLIMATIC, HUMID TROPICAL CONDITIONS WITHOUT DISTORTION AND DETERIORATION IN ANY PART AFFECTING EFFICIENCY AND RELIABILITY OF THE SYSTEMS. DESIGN AND SELECT ALL EQUIPMENT TO PROVIDE THE NECESSARY SAFETY TO HUMAN LIFE AND PROPERTY DURING OPERATION AND MAINTENANCE WITH PARTICULAR ATTENTION GIVEN TO ELECTRICAL SAFETY AND SEGREGATION PRECAUTIONS.

CHECK THE FINISHED PAINTWORK AROUND THE AREA OF EACH INSTALLATION AND TOUCH UP ALL DAMAGED PARTS AND FINISHES AFTER THE INSTALLATION OF THE ELECTRICAL SERVICES.

ALL WORKS ARE TO BE CARRIED OUT IN ACCORDANCE WITH THE BUILDER'S PROGRAM. ENSURE ALL FINAL LOCATIONS OF OUTLETS AND FITTINGS ARE CO-ORDINATED ONSITE WITH THE ARCHITECT AND ALL OTHER SERVICES, TO THE APPROVAL OF THE PROJECT MANAGER. ALLOW TO CO-ORDINATE THE FINAL LOCATION OF ALL EQUIPMENT, FITTINGS, & OUTLETS, SUCH THAT THEY ARE INSTALLED IN ACCORDANCE WITH THE AS3000 RESTRICTED ZONES, AND ARE NOT COVERED INAPPROPRIATELY.

ENSURE THAT ALL METAL SURFACES ARE SUITABLY PROTECTED AGAINST CORROSION, AND THAT ALL PLASTIC MATERIALS ARE UV STABILISED.

PROVIDE ALL MATERIALS AS NEW, AND OF THE HIGHEST CLASS AVAILABLE FOR THEIR RESPECTIVE TYPES. ENSURE ALL ASPECTS OF THE WORK ARE OF A HIGH STANDARD THROUGHOUT, AND INSTALLED IN A NEAT AND TRADESMAN LIKE MANNER, TO THE CURRENT INDUSTRY STANDARDS.

IRRESPECTIVE OF INFORMATION CONTAINED IN THE ELECTRICAL SERVICES DOCUMENTS OR IN INSTRUCTIONS, IT IS THE ELECTRICAL SUB CONTRACTOR'S RESPONSIBILITY TO ENSURE ALL ELECTRICAL SERVICES WORKS ARE INSTALLED IN ACCORDANCE WITH THE REQUIREMENTS OF THE FOLLOWING. REFER ANY DISCREPANCIES BETWEEN THE REQUIREMENTS OF THE FOLLOWING AND/OR THE ELECTRICAL SERVICES DOCUMENTS AND INSTRUCTIONS TO THE ARCHITECT FOR CLARIFICATION PRIOR TO THE PLACING OF ORDERS, FABRICATION OR INSTALLATION OF THE ITEMS/METHODS IN DISCREPANCY.

- NCC BUILDING CODE OF AUSTRALIA.
- ELECTRICITY ACT.
- ELECTRICAL SAFETY ACT.
- ENERGEX REQUIREMENTS.
- THE QUEENSLAND ELECTRICITY CONNECTION MANUAL V4 (QECM) AND THE NATIONAL ELECTRICITY METERING STANDARDS (NEM).
- AS/NZS3000.
- AS3008.
- LOCAL BRIGADE.
- WORKPLACE HEALTH AND SAFETY ACT.
- TELECOMMUNICATIONS ACT.
- ACMA REQUIREMENTS.

3. AUTHORITIES

ENSURE ALL OF THE ELECTRICAL SERVICES COMPLY WITH THE REQUIREMENTS OF ALL REGULATORY AUTHORITIES HAVING JURISDICTION OVER THE SITE INCLUDING BUT NOT LIMITED TO THE FOLLOWING:

- ACMA.
- LOCAL COUNCIL.
- ENERGEX.
- STATE GOVERNMENT DEPARTMENT OF ENVIRONMENT AND HERITAGE.
- QLD GOVERNMENT, DIVISION OF WORKPLACE, HEALTH AND SAFETY.
- QLD FIRE AND EMERGENCY SERVICES.

4. CABLES

UNLESS OTHERWISE SPECIFIED, INSTALL AND TERMINATE CABLES IN ACCORDANCE WITH THE MANUFACTURERS' RECOMMENDATIONS. DETERMINE THE FINAL ROUTES TO SUIT THE BUILDING STRUCTURE AND SITE CONDITIONS. UNLESS NOTED OTHERWISE, PROVIDE ALL 240 VOLT POWER AND LIGHTING WIRING AS 2.5mm² TWIN & EARTH STRANDED COPPER CONDUCTORS, PVC INSULATED 0.6/1kV V75 GRADE TO AS3174, PROTECTED BY A 20 AMP CIRCUIT BREAKER. ALL CONDUIT AND FITTINGS TO BE RIGID UPVC TO AS2053, UNLESS NOTED OTHERWISE.

NOTES

5. POWER DISTRIBUTION

THE POWER DISTRIBUTION COMPONENT OF THIS CONTRACT INCLUDES, BUT IS NOT LIMITED TO THE FOLLOWING EXTENT OF WORK:

- ADDITIONAL SWITCHGEAR IN DISTRIBUTION BOARD DB-A.
- CABLE ACCESS WAYS.
- CIRCUITS.
- ISOLATORS AND OUTLETS.
- TESTING AND COMMISSIONING.
- THERMOSCAN THE MSB / DISTRIBUTION BOARD DB-A ONE WEEK AFTER PRACTICAL COMPLETION.
- ALL EXISTING CIRCUITS AND OUTLETS THAT REMAIN ARE TO BE RECONNECTED.

6. LIGHTING

THE LIGHTING COMPONENT OF THE ELECTRICAL SERVICES SUB-CONTRACT INCLUDES ALL OF THE INTERNAL AND EXTERNAL LIGHT FITTINGS, LAMPS AND ACCESSORIES. PROVIDE ALL NECESSARY ACCESSORIES TO FACILITATE THE COMPLETE LIGHTING INSTALLATION. THE LIGHTING COMPONENT OF THE ELECTRICAL SERVICES SUB-CONTRACT INCLUDES THOUGH IT IS NOT LIMITED TO THE FOLLOWING EXTENT OF WORK:

- INTERNAL LIGHTING.
- EMERGENCY AND EXIT LIGHTING.
- EARTHING OF THE LIGHTING INSTALLATION.
- LIGHTING CONTROL.
- LIGHTING SUBCIRCUITS.
- TESTING AND COMMISSIONING.
- ALL EXISTING LIGHTING THAT REMAINS IS TO BE RECONNECTED.

PROVIDE A SINGLE POINT EMERGENCY LIGHTING SYSTEM THAT COMPLIES WITH THE LATEST ISSUE OF ALL PARTS AS2293 AND THE RELEVANT PARTS OF THE NCC BCA. INSTALL EMERGENCY LIGHT FITTINGS NOMINATED AS MAINTAINED WITH THE LAMP PERMANENTLY ON SUPPLIED VIA AN UNSWITCHED ACTIVE MAINS SUPPLY WHEN THE MAINS SUPPLY IS AVAILABLE. WHEN THE MAINS SUPPLY IS NOT AVAILABLE, THE LAMP IS TO REMAIN ON SUPPLIED BY THE EMERGENCY PACK. SINGLE LAMP MAINTAINED EMERGENCY LIGHTS ARE NOT SWITCHED WITH THE LOCAL GENERAL AREA LIGHTING. (THE LAMP IS ALWAYS ON.)

INSTALL EMERGENCY LIGHT FITTINGS NOMINATED AS NON-MAINTAINED AS FOLLOWS:

- IF THE FITTING IS NOT BEING SWITCHED, THE LAMP IS TO REMAIN OFF WHEN THE MAINS SUPPLY IS AVAILABLE. WHEN THE MAINS SUPPLY IS NOT AVAILABLE THE LAMP IS TO BE SWITCHED ON SUPPLIED BY THE EMERGENCY PACK. UNSWITCHED SINGLE LAMP NON-MAINTAINED EMERGENCY LIGHTS ARE NOT SWITCHED WITH THE LOCAL GENERAL AREA LIGHTING. (THE LAMP IS ON ONLY WHEN THE MAINS SUPPLY IS NOT AVAILABLE.)
- IF THE FITTING IS BEING SWITCHED, THE LAMP IS TO BE SUPPLIED AND CONTROLLED WITH THE LOCAL GENERAL AREA LIGHTING WHEN THE MAINS SUPPLY IS AVAILABLE. WHEN THE MAINS SUPPLY IS NOT AVAILABLE THE LAMP IS TO BE SWITCHED ON, SUPPLIED BY THE EMERGENCY PACK. (THE LAMP IS ON WHEN TURNED ON WITH THE LOCAL GENERAL LIGHTING OR THE MAIN SUPPLY IS NOT AVAILABLE.)

7. TELECOMMUNICATIONS SERVICE

THE COMMUNICATIONS CABLING COMPONENT OF THIS CONTRACT INCLUDES THE PROVISION OF A NEW COMMUNICATIONS RACK CR-A WITH A NEW FIBRE LINK FROM THE EXISTING NISSAN BUILDING COMMUNICATIONS RACK. ALL OF THE NEW COMMUNICATIONS OUTLETS ARE TO BE SUPPLIED FROM PATCH PANELS IN THE NEW COMMUNICATIONS RACK CR-A.

PROVIDE THE COMMUNICATIONS CABLING COMPONENT OF THIS CONTRACT AS A COMMSCOPE OR MOLEX CAT 6 INSTALLATION WITH A 15 YEAR MANUFACTURERS PERFORMANCE WARRANTY. THE COMMUNICATIONS CABLING IS TO BE RUN TO PATCH PANELS WITHIN RACK CR-A.

THE COMMUNICATIONS CABLING COMPONENT OF THIS CONTRACT INCLUDES, BUT IS NOT LIMITED TO THE FOLLOWING EXTENT OF WORK:

- COMMUNICATIONS RACK.
- FIBRE LINK FROM THE EXISTING NISSAN BUILDING RACK.
- CAT 6 COMMUNICATIONS OUTLETS AND CABLING.
- CAT 6 PATCH PANELS.
- CABLE ACCESS WAYS.
- TESTING AND COMMISSIONING.

8. ABBREVIATIONS

- A - AMP CURRENT RATING
- AB - MOUNT ABOVE BENCH.
- AFFL - ABOVE FINISHED FLOOR LEVEL.
- BB - MOUNT BELOW BENCH.
- BH - MOUNT ON BULKHEAD.
- CEIL - MOUNT ON CEILING.
- CS - MOUNT WITHIN CEILING SPACE.
- C/W - COMPLETE WITH.
- DW - DISHWASHER.
- HWS - HOT WATER SYSTEM.
- MCB - MINIATURE CIRCUIT BREAKER.
- MEN - MULTIPLE EARTH NEUTRAL LINK.
- MSB - MAIN SWITCHBOARD.
- N - NEON / LED INDICATOR WHEN ON.
- NTS - NOT TO SCALE.
- RCBO - CIRCUIT PROTECTED VIA A 30mA RESIDUAL CURRENT DEVICE INTEGRAL TO THE CIRCUIT BREAKER.
- REF - REFRIGERATOR.
- UNO - UNLESS NOTED OTHERWISE.
- WP - WEATHERPROOF TO IP56 UNO.
- 500 - NUMBER DENOTES MOUNTING HEIGHT AFFL.

ELECTRICAL DESIGN GROUP BRISBANE PTY LTD ACN 092 710 793		THE COPYRIGHT OF THIS DRAWING REMAINS THE PROPERTY OF THE ELECTRICAL DESIGN GROUP.		PROJECT: EAGERS VW & CHERY, IPSWICH		A TENDER 25/02/2026	
TRADING AS: ELECTRICAL DESIGN GROUP		USE FIGURED DIMENSIONS IN PREFERENCE TO SCALE.		DRAWING: EAGERS VW & CHERY, IPSWICH		REV: DESCRIPTION: DATE:	
ALL DIMENSIONS TO BE VERIFIED ONSITE.		ELECTRICAL DESIGN GROUP BRISBANE GOLD COAST		7 BRISBANE ROAD, BUNDAMBA, QUEENSLAND		DRAWING: ELECTRICAL SERVICES NOTES	
P.O.Box 15, Sherwood Q.4075 Phone: (07) 3278 4375 Email: brisbane@edg.net.au Web: www.edg.net.au		SCALE: NOT TO SCALE AT A1		PROJECT NO: DRAWING NO: REVISION:		C3704a E04 A	