



ELECTRICAL DESIGN GROUP

ELECTRICAL BUILDING SERVICES CONSULTANTS

P.O. Box 15, SHERWOOD Q. 4075

Phone: (07) 3278 4375

Website: www.edg.net.au Email: brisbane@edg.net.au

C3475a - KINGS CHRISTIAN COLLEGE - PIMPAMA, SENIOR SCHOOL ADMINISTRATION PIM21

C3475a-0001(B).xls

ELECTRICAL SERVICES CONTRACT DOCUMENT SCHEDULE

REVISION B - 16 FEBRUARY 2026

ISSUING INFORMATION				DATE OF ISSUE							
	DAY	04	16								
	MONTH	02	02								
	YEAR	26	26								
	REASON FOR ISSUE	P	T								
A = APPROVAL C = CONSTRUCTION N = COORDINATION P = PRELIMINARY T = TENDER											

DISTRIBUTION				NUMBER OF COPIES							
WWW.EDG.NET.AU				1E	1E						
KINGS CHRISTIAN COLLEGE				1E	1E						
BURLING BROWN ARCHITECTS				1E	1E						
P = PRINT T = TRACING D = DISC E = EMAIL F = FAX											

DOCUMENTS				REVISION							
C3475a-E01.dwg	LEGEND & DETAILS	A	B								
C3475a-E02.dwg	NOTES	A	B								
C3475a-E03.dwg	SCHEMATICS	A	B								
C3475a-E04.dwg	SITE PLAN	A	B								
C3475a-E05.dwg	GROUND LEVEL PLANS	A	B								
C3475a-E06.dwg	LEVEL 1 PLANS	A	B								
C3475a-E07.dwg	LEVEL 2 PLANS	A	B								
C3475a-S01.dwg	SECURITY LEGEND & GROUND LEVEL PLAN		A								
C3475a-S02.dwg	SECURITY LEVEL 1 & LEVEL 2 PLANS		A								
C3475a-0001.xls	CONTRACT DOCUMENT SCHEDULE	A	B								
C3475a-0002.xls	EQUIPMENT SCHEDULE		A								
C3475a-0004.xls	DISTRIBUTION BOARD DB-21P SCHEDULE		A								
C3475a-0005.xls	DISTRIBUTION BOARD DB-21L SCHEDULE		A								
C3475a-0001.zip	FITTING & OUTLET DATASHEETS										



ELECTRICAL DESIGN GROUP

ELECTRICAL BUILDING SERVICES CONSULTANTS

P.O. Box 15, SHERWOOD Q. 4075

Phone: (07) 3278 4375

Website: www.edg.net.au Email: brisbane@edg.net.au

C3475a - KINGS CHRISTIAN COLLEGE - PIMPAMA, SENIOR SCHOOL ADMINISTRATION PIM21 C3475a-0002(A).xls

ELECTRICAL EQUIPMENT SCHEDULE

REVISION A - 16 FEBRUARY 2026

THE EQUIPMENT SUPPLIER CONTACT DETAILS MAY BE AVAILABLE ON THE EDG WEBSITE VIA THE FOLLOWING LINK
www.edg.net.au/links.html

TYPE	LAMPS	DESCRIPTION	COLOUR / ACCESSORY	CATALOGUE No	REV
L1	4000K LED 17.2W/M IP20 24V DC LED STRIP	ROD SUSPENDED 2400 LONG EXTRUSION LEVEL WITH THE UNDERSIDE OF THE SUSPENDED ACOUSTIC PANELS. PROVIDE THE EXTRUSION WITH AN OPAL DIFFUSER AND ALL NECESSARY ACCESSORIES. PROVIDE A DRIVER IN A REMOTE CONCEALED POSITION NOTED ON THE AS CONSTRUCTED DRAWINGS.	BLACK EXTRUSION AND SUSPENSION	M-ELEC ML-ALUSUS-K-V3 + ML-VL-17.2-.NW	A
L2	10W/M 4000K LED	FLEXIBLE LED ROPE FLEX SCREW FIXED ABOVE THE CEILING PELMET AS PER THE ARCHITECTURAL DETAIL. PROVIDE THE STRIP WITH REMOTE POWER SUPPLIES AS REQUIRED LOCATE THE POWER SUPPLIES IN A CONCEALED ACCESSIBLE POSITION NOTED ON THE AS CONSTRUCTED DOCUMENTS. CONFIRM THE BEND PLANE (TOP OR SIDE) ON SITE WITH THE ARCHITECT.	WHITE	RAPID LED R2321 OR R2322 - 4000K + POWER SUPPLY	A
L3	CURVE 1377Lm/Mtr 4000K NATURAL WHITE LED	CUSTOM ROD SUSPENDED 75 X 80 EXTRUSION C/W OPAL DIFFUSER AND INTEGRAL DRIVER. FITTING MADE UP OF BOTH CURVES AND LINEAR SECTIONS AS PER THE L3 DETAIL.	BLACK	HAWKO 75 CURVE USED FOR BOTH CURVES AND LINEAR SECTIONS	A
L4	13W 4000K LED	SURFACE MOUNTED CAN 55 DEG BEAM DOWNLIGHT C/W REMOTE DRIVER	BLACK	GAMMA ILLUMINATION CORBEL 1440SM-VWFL-4K-13W	A
L5	24W 4000K LED	SURFACE MOUNTED BUNKER C/W INTEGRAL DRIVER	BLACK TRIM	WE EF DLO239 LED	A
L6	13W 4000K LED	RECESSED 40 DEG BEAM DOWNLIGHT C/W REMOTE DRIVER	WHITE TRIM	GAMMA ILLUMINATION CORBEL 1410-4K-13W	A
L7	24W 4000K LED	SURFACE MOUNTED BUNKER C/W INTEGRAL DRIVER	BLACK TRIM	WE EF DLO239 LED	A
L8	28W 4000K LED	600 X 600 LAY IN FLAT PLATE LED FITTING C/W REMOTE DRIVER MOUNTED IN A SURFACE MOUNTING KIT	WHITE TRIM	GAMMA ILLUMINATION PHANTOM 600X600 88 SERIES 28W C/W SCREW FREE SURFACE KIT	A



ELECTRICAL DESIGN GROUP

ELECTRICAL BUILDING SERVICES CONSULTANTS

P.O. Box 15, SHERWOOD Q. 4075

Phone: (07) 3278 4375

Website: www.edg.net.au Email: brisbane@edg.net.au

C3475a - KINGS CHRISTIAN COLLEGE - PIMPAMA, SENIOR SCHOOL ADMINISTRATION PIM21 C3475a-0002(A).xls

ELECTRICAL EQUIPMENT SCHEDULE

REVISION A - 16 FEBRUARY 2026

THE EQUIPMENT SUPPLIER CONTACT DETAILS MAY BE AVAILABLE ON THE EDG WEBSITE VIA THE FOLLOWING LINK
www.edg.net.au/links.html

TYPE	LAMPS	DESCRIPTION	COLOUR / ACCESSORY	CATALOGUE No	REV
L9	13W 4000K LED	RECESSED 40 DEG BEAM DOWNLIGHT C/W REMOTE DRIVER	WHITE TRIM	GAMMA ILLUMINATION CORBEL 1410-4K-13W	A
L10	13W 4000K LED	RECESSED 52 DEG BEAM DOWNLIGHT C/W REMOTE DRIVER	WHITE TRIM	GAMMA ILLUMINATION COBALT 1402-4K-13W	A
L11	28W 4000K LED	600 X 600 LAY IN FLAT PLATE LED FITTING C/W REMOTE DRIVER MOUNTED IN A SURFACE MOUNTING KIT	BLACK	GAMMA ILLUMINATION PHANTOM 600X600 88 SERIES 28W C/W SCREW FREE SURFACE KIT	A
L12	28W 4000K LED	INGROUND UP LIGHT C/W INTEGRAL DRIVER AND CONCRETE SURROUND	STAINLESS STEEL	GAMMA ILLUMINATION AURA 1059-FL-4K-28W	A
L13	22W 4000K LED	RECESSED 47 DEG BEAM DOWNLIGHT C/W REMOTE DRIVER	WHITE	GAMMA ILLUMINATION CORBEL 1440-VWFL-4K-22W	A
L14	8W 4000K LED	RECESSED 47 DEG BEAM DOWNLIGHT C/W REMOTE DRIVER	WHITE TRIM	GAMMA ILLUMINATION MYLO 1004-WFL-4K-8W	A
L15	24W 4000K LED	350MM DIA WALL MOUNTED IP55 BUNKER C/W INTEGRAL DRIVER CONFIRM THE MOUNTING HEIGHT ON SITE WITH THE ARCHITECT	BLACK HOUSING	WE EF DLO239 LED	A
L16	4000K LED 17.2W/M IP20 24V DC LED STRIP	ROD SUSPENDED 3600 LONG EXTRUSION. PROVIDE THE EXTRUSION WITH AN OPAL DIFFUSER AND ALL NECESSARY ACCESSORIES. PROVIDE A DRIVER IN A REMOTE CONCEALED POSITION NOTED ON THE AS CONSTRUCTED DRAWINGS.	BLACK EXTRUSION AND SUSPENSION	M-ELEC ML-ALUSUS-K-V3 + ML-VL-17.2-.NW	A
L17	14.4W/M 3000K LED	LED STRIP WITHIN A SCREW FIXED EXTRUSION C/W DIFFUSER MOUNTED TO THE UNDERSIDE OF THE OVERHEAD CUPBOARD HARD AGAINST THE SPLASHBACK. PROVIDE THE STRIP WITH A REMOTE DRIVER LOCATED IN A CONCEALED ACCESSIBLE POSITION NOTED ON THE AS CONSTRUCTED DOCUMENTS.	NATURAL	RAPID LED R2334 PLUS ALUMINIUM EXTRUSION AND POWER SUPPLY & DALI CONTROLLER	A



ELECTRICAL DESIGN GROUP

ELECTRICAL BUILDING SERVICES CONSULTANTS

P.O. Box 15, SHERWOOD Q. 4075

Phone: (07) 3278 4375

Website: www.edg.net.au Email: brisbane@edg.net.au

C3475a - KINGS CHRISTIAN COLLEGE - PIMPAMA, SENIOR SCHOOL ADMINISTRATION PIM21 C3475a-0002(A).xls

ELECTRICAL EQUIPMENT SCHEDULE

REVISION A - 16 FEBRUARY 2026

THE EQUIPMENT SUPPLIER CONTACT DETAILS MAY BE AVAILABLE ON THE EDG WEBSITE VIA THE FOLLOWING LINK
www.edg.net.au/links.html

TYPE	LAMPS	DESCRIPTION	COLOUR / ACCESSORY	CATALOGUE No	REV
E1	LED	EMERGENCY LIGHT: RECESSED NON-MAINTAINED EMERGENCY LIGHT. AS2293 CLASSIFICATION C0-D40 - C90-D40.	WHITE	STANILITE SF1LEDP	A
E2	LED	EMERGENCY LIGHT: SURFACE MOUNTED RECESSED NON-MAINTAINED EMERGENCY LIGHT. AS2293 CLASSIFICATION C0-D40 - C90-D40.	WHITE	STANILITE ECOSPITFIREBOX	A
E3	LED	EMERGENCY LIGHT: SURFACE MOUNTED BLACK CAN C/W RECESSED NON-MAINTAINED EMERGENCY LIGHT. AS2293 CLASSIFICATION C0-D40 - C90-D40. ENSURE THE UNDERSIDE OF THE CAN IS LEVEL WITH THE ADJACENT ACOUSTIC FINS.	BLACK CAN AND FITTING	STANILITE SF1LEDP BLK PLUS CUSTOM CAN	A
E4	LED	EMERGENCY LIGHT: RECESSED NON-MAINTAINED EMERGENCY LIGHT. AS2293 CLASSIFICATION C0-D40 - C90-D40.	BLACK	STANILITE SF1LEDP BLK	A
EX	LED	EXIT LIGHT: MAINTAINED 24M VIEWING DISTANCE EXIT LIGHT C/W DIFFUSERS & DIRECTIONAL ARROWS AS SHOWN. CEILING OR WALL MOUNT BETWEEN 2100mm & 2700mm AFFL IF THERE IS NO VERTICAL SURFACE TO MOUNT THE FITTING ON WITHIN THIS RANGE CONFIRM THE MOUNTING HEIGHT WITH THE ENGINEER. AS2293 CLASSIFICATION C0-D8 - C90-E3.2.	WHITE	STANILITE PQFLEDP	A
ONE-WAY LIGHT SWITCH		ONE-WAY LIGHT SWITCH C/W CIRCUIT IDENTIFICATION ON THE FACEPLATE BEHIND THE SURROUND MOUNTED AT 1000mm AFFL UNLESS NOTED OTHERWISE.	WHITE	CLIPSAL C2000 SERIES 30USM	A
TWO-WAY LIGHT SWITCH		TWO-WAY LIGHT SWITCH C/W CIRCUIT IDENTIFICATION ON THE FACEPLATE BEHIND THE SURROUND MOUNTED AT 1000mm AFFL UNLESS NOTED OTHERWISE.	WHITE	CLIPSAL C2000 SERIES 30USM	A
PROXIMITY DETECTOR SWITCH (PD)		ADJUSTABLE FLUSH RECESSED 360 DEGREE PIR PRESENCE DETECTOR TO OPERATE THE ASSOCIATED LIGHTS FOR A PRE-SET AMOUNT OF TIME. ADJUST THE TIME AND SENSITIVITY ON SITE AS DIRECTED BY THE ENGINEER. SUBMIT DETAILS OF THE MOVEMENT DETECTOR SWITCH FOR APPROVAL PRIOR TO ORDERING	WHITE	CLIPSAL	A
SINGLE POWER OUTLET		SINGLE POWER OUTLET C/W CIRCUIT IDENTIFICATION ON THE FACEPLATE BEHIND THE SURROUND. MOUNT AT 300mm AFFL U.N.O. RATING 10A U.N.O.	WHITE	CLIPSAL C2000 SERIES	A
DOUBLE POWER OUTLET		DOUBLE POWER OUTLET C/W CIRCUIT IDENTIFICATION ON THE FACEPLATE BEHIND THE SURROUND. MOUNT AT 300mm AFFL U.N.O. RATING 10A U.N.O.	WHITE	CLIPSAL C2000 SERIES	A



ELECTRICAL DESIGN GROUP

ELECTRICAL BUILDING SERVICES CONSULTANTS

P.O. Box 15, SHERWOOD Q. 4075

Phone: (07) 3278 4375

Website: www.edg.net.au Email: brisbane@edg.net.au

C3475a - KINGS CHRISTIAN COLLEGE - PIMPAMA, SENIOR SCHOOL ADMINISTRATION PIM21 C3475a-0002(A).xls

ELECTRICAL EQUIPMENT SCHEDULE

REVISION A - 16 FEBRUARY 2026

THE EQUIPMENT SUPPLIER CONTACT DETAILS MAY BE AVAILABLE ON THE EDG WEBSITE VIA THE FOLLOWING LINK
www.edg.net.au/links.html

TYPE	LAMPS	DESCRIPTION	COLOUR / ACCESSORY	CATALOGUE No	REV
DOUBLE POWER OUTLET (USB)		DOUBLE POWER OUTLET C/W TWO USB C CHARGER PORTS , CIRCUIT IDENTIFICATION ON THE FACEPLATE BEHIND THE SURROUND MOUNT AB U.N.O. RATING 10A U.N.O.	WHITE	CLIPSAL C2000 SERIES FACEPLATE	A
DRINK FOUNTAIN OUTLET (DF)		IP54 WEATHERPROOF SINGLE 10 AMP POWER OUTLET C/W COVER FLAP OVER SOCKET MOUNTED WITHIN THE DRINK FOUNTAIN HOUSING.	-	CLIPSAL WSCF227F	A
WEATHERPROOF POWER OUTLET (WP)		IP54 WEATHERPROOF SINGLE / DOUBLE POWER OUTLET AS NOTED ON DRAWING C/W COVER FLAP OVER SOCKET. MOUNT AT MINIMUM 1100mm AFFL U.N.O. RATING 10A U.N.O.	-	CLIPSAL WSCF227F	A
IP56 WEATHERPROOF POWER OUTLET (WP)		IP56 WEATHERPROOF SINGLE / DOUBLE POWER OUTLET AS NOTED ON DRAWING. MOUNT AT MINIMUM 1100mm AFFL U.N.O. RATING 10A U.N.O.	-	CLIPSAL "56 SERIES"	A
RECESS KIT (RK)		VERTICALLY ORIENTATED WALL BOX TO ALLOW THE OUTLET TO BE RECESSED WITHIN THE WALL CAVITY	WHITE	REPELEC RECWP1WH	A
SPECIAL PURPOSE POWER OUTLET		SPECIAL PURPOSE POWER OUTLET. MOUNT AT 300mm AFFL U.N.O. RATING 10A U.N.O. SIZE AND TYPE AS NOTED	-	-	A
HAND DRYER CONNECTION (HD)		THE ELECTRICAL SUB CONTRACTOR IS TO TAKE POSSESSION OF THE HAND DRYER AND INSTALL IT WITH 20A ISOLATING SWITCH WALL MOUNTED CONNECTED TO THE HAND DRYER UNIT AS PER DETAIL. PROVIDE CIRCUIT IDENTIFICATION ON THE FACEPLATE BEHIND THE SURROUND	WHITE	CLIPSAL "C2000 SERIES"	A
SINGLE-PHASE ISOLATOR		SINGLE-PHASE WEATHERPROOF ISOLATOR. MOUNT AT 1350mm AFFL U.N.O. RATING 20A U.N.O. CONNECT TO EQUIPMENT VIA FLEXIBLE CONDUIT.	-	CLIPSAL WHT20	A
THREE-PHASE ISOLATOR		THREE-PHASE WEATHERPROOF ISOLATOR. MOUNT AT 1350mm AFFL U.N.O. RATING 20A U.N.O. CONNECT TO EQUIPMENT VIA FLEXIBLE CONDUIT. "RSD" DENOTES ROLLER SHUTTER DOOR SUPPLY - COORDINATE LOCATION ONSITE WITH MOTOR.	-	CLIPSAL WHT35	A
MSB		REPLACE THE EXISTING MAIN SWITCHBOARD AS PER THE POWER SCHEMATIC AND ASSOCIATED NOTES.			A
DB-21		DISTRIBUTION BOARD DB-21. PROVIDE A NEW DISTRIBUTION BOARD DB-21 AS PER THE POWER SCHEMATICS AND NOTES. PROVIDE A SHOP DRAWING THE ESCUTCHEON IS TO BE HINGED AND SECURED VIA 1/4 TURN LATCHES. ENSURE THE ESCUTCHEON CAN BE OPENED WITHOUT ISOLATING THE POWER.			A
DB-21P		PROVIDE A NEW DISTRIBUTION BOARD DB-21P AS PER THE DB-21P SCHEDULE, POWER SCHEMATICS AND NOTES. PROVIDE A SHOP DRAWING THE ESCUTCHEON IS TO BE HINGED AND SECURED VIA 1/4 TURN LATCHES. ENSURE THE ESCUTCHEON CAN BE OPENED WITHOUT ISOLATING THE POWER.			A



ELECTRICAL DESIGN GROUP

ELECTRICAL BUILDING SERVICES CONSULTANTS

P.O. Box 15, SHERWOOD Q. 4075

Phone: (07) 3278 4375

Website: www.edg.net.au Email: brisbane@edg.net.au

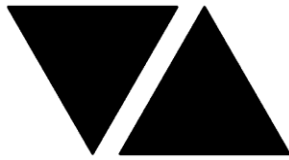
C3475a - KINGS CHRISTIAN COLLEGE - PIMPAMA, SENIOR SCHOOL ADMINISTRATION PIM21 C3475a-0002(A).xls

ELECTRICAL EQUIPMENT SCHEDULE

REVISION A - 16 FEBRUARY 2026

THE EQUIPMENT SUPPLIER CONTACT DETAILS MAY BE AVAILABLE ON THE EDG WEBSITE VIA THE FOLLOWING LINK
www.edg.net.au/links.html

TYPE	LAMPS	DESCRIPTION	COLOUR / ACCESSORY	CATALOGUE No	REV
DB-21L		PROVIDE A NEW DISTRIBUTION BOARD DB-21L AS PER THE DB-21L SCHEDULE, POWER SCHEMATICS AND NOTES. PROVIDE A SHOP DRAWING THE ESCUTCHEON IS TO BE HINGED AND SECURED VIA 1/4 TURN LATCHES. ENSURE THE ESCUTCHEON CAN BE OPENED WITHOUT ISOLATING THE POWER.			A
MSSB-21		NEW MSSB PROVIDED AS PART OF THE MECHANICAL SERVICES SUB CONTRACT. PROVIDE A MCCB IN THE MSB AND SUBMAIN AS PER THE POWER SCHEMATIC TO SUPPLY THE MSSB-12.			A
ELECTRICAL RISER		PROVIDE THE ELECTRICAL RISER WITH GALVANIZED CABLE LADDERS / TRAYS AS NOTED. TURN THE CONDUITS UP TO THE ASSOCIATED TRAY / LADDER.			A
M1		SUPPLY AUTHORITY CODE COMPLIANT LV MAXIMUM DEMAND TARIFF METER.			A
M2		PRIVATE MULTI FUNCTION LOGGING METER.			A
M3		NCC PART J ENERGY METER.			A
M4		SMART SOLAR ENERGY METER.			A
MTS		EXISTING MANUAL TRANSFER SWITCH TO BE PROVIDED WITH AN AUXILIARY OUTPUT TO SIGNAL THE SOLAR SYSTEM TO SHUT DOWN WHEN THE SUPPLY IS SWITCHED TO THE GENERATOR.			A
C1		GRID PROTECTION CONTACTOR			A
WPM		WIRELESS PROTECTION RELAY MASTER			A
WPR		WIRELESS CONTROLLED PROTECTION SLAVE			A
MR		GRID PROTECTION MASTER RELAY			A
SR		GRID PROTECTION SLAVE RELAY			A
DL		SOLAR DATA LOGGER			A
GSD		SOLAR GENERATION SIGNALLING DEVICE.			A
SECURITY EQUIPMENT		SECURITY EQUIPMENT TO BE PROVIDED BY THE SECURITY CONTRACTOR. PROVIDE AN INTERFACE TO THE SECURITY SYSTEM SUCH THAT THE INTERNAL LIGHTS ARE CONTROLLED VIA A DRY CONTACT FROM THE SECURITY SYSTEM SO THE INTERNAL LIGHTS ARE AUTOMATICALLY TURNED OFF / DISABLED WHEN THE SECURITY SYSTEM IS ARMED.			A
COMMUNICATIONS RACK CR-H		EXISTING COMMUNICATIONS RACK TO BE PROVIDED WITH A NEW FIBRE CABLE TO CR-21 AS PER T6HE NOTES. UPGRADE THE FIBRE AS REQUIRED.			A



ELECTRICAL DESIGN GROUP

ELECTRICAL BUILDING SERVICES CONSULTANTS

P.O. Box 15, SHERWOOD Q. 4075

Phone: (07) 3278 4375

Website: www.edg.net.au Email: brisbane@edg.net.au

C3475a - KINGS CHRISTIAN COLLEGE - PIMPAMA, SENIOR SCHOOL ADMINISTRATION PIM21 C3475a-0002(A).xls

ELECTRICAL EQUIPMENT SCHEDULE

REVISION A - 16 FEBRUARY 2026

THE EQUIPMENT SUPPLIER CONTACT DETAILS MAY BE AVAILABLE ON THE EDG WEBSITE VIA THE FOLLOWING LINK
www.edg.net.au/links.html

TYPE	LAMPS	DESCRIPTION	COLOUR / ACCESSORY	CATALOGUE No	REV
COMMUNICATIONS RACK CR-11		EXISTING COMMUNICATIONS RACK TO BE PROVIDED WITH A NEW FIBRE CABLE TO CR-21 AS PER T6HE NOTES. UPGRADE THE FOBOT AS REQUIRED.			A
COMMUNICATIONS RACK CR-23		EXISTING COMMUNICATIONS RACK TO BE PROVIDED WITH A NEW FIBRE CABLE TO CR-21 AS PER T6HE NOTES. UPGRADE THE FOBOT AS REQUIRED.			A
COMMUNICATIONS RACK CR-A		EXISTING COMMUNICATIONS RACK TO BE PROVIDED WITH A NEW FIBRE CABLE TO CR-21 AS PER T6HE NOTES. UPGRADE THE FOBOT AS REQUIRED.			A
COMMUNICATIONS RACK CR-ELC		EXISTING COMMUNICATIONS RACK TO BE PROVIDED WITH A NEW FIBRE CABLE TO CR-21 AS PER T6HE NOTES. UPGRADE THE FOBOT AS REQUIRED.			A
COMMUNICATIONS RACK CR-21		PROVIDE CR-21 AS A FREE STANDING 41 RU MINIMUM 800 DEEP COMMUNICATIONS RACK A FOBOT AND ALL NECESSARY PATCH PANELS TO ACCOMMODATE THE COMMUNICATIONS OUTLETS, CCTV POINTS AND VAPE POINTS. PROVIDE CR-21 WITH, CASTERS, TWO RACK MOUNTED SHELVES, CABLE MANAGEMENT AND TWO 10 PORT POWER RAILS. PROVIDE THE RACK WITH TWO AUSTRALIAN MONITOR HS2250P 2 X 250W AMPLIFIERS MOUNTED AT THE TOP OF THE RACK. CONNECT ONE OF THE AMPLIFIER CHANNELS TO THE INTERNAL PUBLIC ADDRESS SPEAKERS ON EACH LEVEL WITH THE FORTH CHANNEL CONNECTED TO THE EXTERNAL PUBLIC ADDRESS SPEAKERS. PROVIDE THE TOP OF THE RACK WITH FOUR TEMPERATURE CONTROLLED FANS.			A
COMMUNICATIONS OUTLET		RJ45 CAT-6 COMMUNICATIONS OUTLET, CABLED BACK TO A CAT 6 PATCH PANEL IN COMMUNICATIONS RACK CR-12 VIA BLUE 4-PAIR CAT-6 UTP CABLE. MOUNT UP TO 3 RJ45 OUTLETS PER MULTI-GANG FACEPLATE WITH SEPARATE PERMANENT LABELLING FOR EACH OUTLET. MOUNT AT 300 AFFL U.N.O	WHITE (BK DENOTES BLACK)	CLIPSAL C2000 SERIES	A
CAT 6A STP COMMUNICATIONS OUTLET		RJ45 CAT-6A STP COMMUNICATIONS OUTLET, CABLED BACK TO A CAT 6 PATCH PANEL IN COMMUNICATIONS RACK CR-12 VIA A BLUE 4-PAIR CAT-6A STP CABLE. MOUNT UP TO 3 RJ45 OUTLETS PER MULTI-GANG FACEPLATE WITH SEPARATE PERMANENT LABELLING FOR EACH OUTLET. MOUNT AT 300 AFFL U.N.O	WHITE (BK DENOTES BLACK)	CLIPSAL C2000 SERIES	A
CAT 6A STP COMMUNICATIONS OUTLET (SM) SURFACE MOUNTED		RJ45 CAT-6A STP COMMUNICATIONS OUTLET MOUNTED ON A SURFACE MOUNTED MOUNTING BLOCK, CABLED BACK TO A CAT 6 PATCH PANEL IN COMMUNICATIONS RACK CR-12 VIA A BLUE 4-PAIR CAT-6A STP CABLE. MOUNT UP TO 3 RJ45 OUTLETS PER MULTI-GANG FACEPLATE WITH SEPARATE PERMANENT LABELLING FOR EACH OUTLET.	WHITE (BK DENOTES BLACK)	CLIPSAL C2000 SERIES	A
CCTV POINT (C1)		CEILING MOUNTED RJ45 CAT-6 COMMUNICATIONS PLUG, CABLED BACK TO A DEDICATED CCTV CAT 6 PATCH PANEL IN COMMUNICATIONS RACK CR-21 VIA YELLOW 4-PAIR CAT-6 UTP CABLE. PROVIDE THE PLUG SUCH THAT IT PROTRUDES OUT 150MM FROM A FLUSH CONDUIT TO ALLOW THE CAMERA TO BE INSTALLED OVER THE CONDUIT WITH THE PLUG DIRECTLY CONNECTED INTO THE CONCEALED REAR OF THE CAMERA.			A



ELECTRICAL DESIGN GROUP

ELECTRICAL BUILDING SERVICES CONSULTANTS

P.O. Box 15, SHERWOOD Q. 4075

Phone: (07) 3278 4375

Website: www.edg.net.au Email: brisbane@edg.net.au

C3475a - KINGS CHRISTIAN COLLEGE - PIMPAMA, SENIOR SCHOOL ADMINISTRATION PIM21 C3475a-0002(A).xls

ELECTRICAL EQUIPMENT SCHEDULE

REVISION A - 16 FEBRUARY 2026

THE EQUIPMENT SUPPLIER CONTACT DETAILS MAY BE AVAILABLE ON THE EDG WEBSITE VIA THE FOLLOWING LINK
www.edg.net.au/links.html

TYPE	LAMPS	DESCRIPTION	COLOUR / ACCESSORY	CATALOGUE No	REV
CCTV POINT (C2)		WALL MOUNTED RJ45 CAT-6 COMMUNICATIONS PLUG, CABLED BACK TO A DEDICATED CCTV CAT 6 PATCH PANEL IN COMMUNICATIONS RACK CR-21 VIA YELLOW 4-PAIR CAT-6 UTP CABLE. PROVIDE THE PLUG SUCH THAT IT PROTRUDES OUT 150MM FROM A FLUSH CONDUIT TO ALLOW THE CAMERA TO BE INSTALLED OVER THE CONDUIT WITH THE PLUG DIRECTLY CONNECTED INTO THE CONCEALED REAR OF THE CAMERA.			A
VAPE POINT		RJ45 CAT-6 COMMUNICATIONS PLUG, CABLED BACK TO A DEDICATED CCTV CAT 6 PATCH PANEL IN COMMUNICATIONS RACK CR-21 VIA PURPLE 4-PAIR CAT-6 UTP CABLE. PROVIDE THE PLUG SUCH THAT IT PROTRUDES OUT 150MM FROM A FLUSH CONDUIT TO ALLOW THE VAPE SENSOR TO BE INSTALLED OVER THE CONDUIT WITH THE PLUG DIRECTLY CONNECTED INTO THE CONCEALED REAR OF THE SENSOR.			A
PA SYSTEM RECESSED SPEAKER		15W CEILING RECESSED MULTI TAP 100V 8 OHM PUBLIC ADDRESS DUAL CONE SPEAKER CABLED BACK TO THE ASSOCIATED AMPLIFIER WITHIN THE COMMUNICATIONS RACK VIA 1.5MM MARKED FIG 8 CABLE.	WHITE (BK DENOTES BLACK)	AUSTRALIAN MONITOR QF8CS	A
PA SYSTEM SURFACE MOUNTED SPEAKER		15W RECESSED MULTI TAP 100V 8 OHM PUBLIC ADDRESS DUAL CONE SPEAKER MOUNTED INTO A SURFACE MOUNTED MOUNTING KIT CABLED BACK TO THE ASSOCIATED AMPLIFIER WITHIN THE COMMUNICATIONS RACK VIA 1.5MM MARKED FIG 8 CABLE.	WHITE (BK DENOTES BLACK)	AUSTRALIAN MONITOR QF8CS PLUS SURFACE MOUNTING KIT	A
PA SYSTEM HORN		30W SURFACE MOUNTED ADJUSTABLE IP66 MULTI TAP 100V 8 OHM PUBLIC ADDRESS HORN SPEAKER CABLED BACK TO THE ASSOCIATED AMPLIFIER WITHIN THE COMMUNICATIONS RACK VIA 1.5MM MARKED FIG 8 CABLE.	WHITE	AUSTRALIAN MONITOR SH30	A
PIT A		EXISTING POWER AND COMMUNICATIONS PITS TO REMAIN AS IS AND BE UTILISED AS REQUIRED.			A
PIT B		ADJUST THE TOP OF THE EXISTING POWER AND COMMUNICATIONS PITS TO MATCH THE NEW HARDSCAPE LEVELS AND PROVIDE NEW CLASS C INFILL LIDS.			A
PIT C		PROVIDE PIT C AS A 1200 X 1200 X 1000 DEEP MIN POWER PIT WITH A CLASS C INFILL LID C/W PROPRIETARY PRECAST CONCRETE LID SURROUND, PRECAST OR PVC CONCRETE PIT AND RISERS AS REQUIRED. POLY CRETE / FIBRE PITS ARE NOT ACCEPTABLE. ENSURE THE TOP OF THE PIT IS FLUSH WITH THE FINAL SURROUNDING LEVELS. DRAIN THE PIT TO STORM WATER AND PROVIDE THE PIT WITH A WEEP HOLE IN THE BASE INTO A GRAVEL SOAKAGE PIT. PROVIDE DETAILS OF THE PITS AND LIDS FOR APPROVAL PRIOR TO ORDERING. PROVIDE A 150 WIDE X 150 DEEP MIN SURROUND AROUND THE TOP OF EACH PIT WITH A 10MM FALL AWAY FROM THE PIT LID. PROVIDE PHOTOS OF THE COMPLETED PITS INSTALLATION SHOWING ALL CONDUITS AND CABLING. MARK UP THE PHOTOS WITH THE SIZE AND DESTINATION OF EACH CONDUIT.			A



ELECTRICAL DESIGN GROUP

ELECTRICAL BUILDING SERVICES CONSULTANTS

P.O. Box 15, SHERWOOD Q. 4075

Phone: (07) 3278 4375

Website: www.edg.net.au Email: brisbane@edg.net.au

C3475a - KINGS CHRISTIAN COLLEGE - PIMPAMA, SENIOR SCHOOL ADMINISTRATION PIM21 C3475a-0002(A).xls

ELECTRICAL EQUIPMENT SCHEDULE

REVISION A - 16 FEBRUARY 2026

THE EQUIPMENT SUPPLIER CONTACT DETAILS MAY BE AVAILABLE ON THE EDG WEBSITE VIA THE FOLLOWING LINK
www.edg.net.au/links.html

TYPE	LAMPS	DESCRIPTION	COLOUR / ACCESSORY	CATALOGUE No	REV
MSB TRENCH		REPLACE THE THREE EXISTING MSB PITS WITH A SINGLE REINFORCED MASONRY INSITU PIT / TRENCH AS PER THE MSB TRENCH DETAIL. PROVIDE AS PART OF THE ELECTRICAL WORKS THE SWITCHBOARD AND LID SUPPORT SYSTEM AND THE TRENCH LIDS. PROVIDE THE TRENCH LIDS AND STRUCTURAL SUPPORT SYSTEM AS HOT DIPPED GALVANISED STEEL. PROVIDE THE TRENCH LIDS WITH LIFTING HOLES CHECKER PLATE R10 ANTI SLIP PATTERNING WITH EACH PART NO HEAVIER THAN 20 kg. FIX THE LIDS IN PLACE SUCH THAT A TOOL IS REQUIRED TO REMOVE THEM. PROVIDE THE TRENCH WITH AN AUTOMATIC SUMP PUMP TO DRAIN TO THE STORMWATER SYSTEM. PROVIDE CABLE SUPPORTS WITHIN THE TRENCH TO ENSURE THAT THERE ARE NO CABLES WITHIN 50MM OF THE TRENCH FLOOR.			A
FIRE INDICATOR PANEL (FIP)		AS 1670 COMPLAINT FIRE INDICATOR PANEL INCORPORATING THE EWCIE AND FDCIE			A
FIRE ALARM SYSTEM MAGNETIC DOOR HOLDER		FIRE ALARM SYSTEM MAGNETIC DOOR HOLDER CONFIGURED TO RELEASE UPON ALARM, WHEN THE SECURITY SYSTEM IS ARMED AND VIA AN ADJACENT PUSH BUTTON.			
PUSH BUTTON (PB)		PUSH BUTTON MOUNTED ATT 1,000AFL CONFIGURED TO RELEASE THE ADJACENT DOOR MAGNETIC HOLDER. ENGRAVE THE PUSH BUTTON WITH BLACK TEXT "DOOR RELEASE". CONFIRM THE LOCATION OF THE PUSH BUTTON ON SITE WITH THE PROJECT MANAGER.	WHITE	CLIPSAL C2000 SERIES	A
FIRE EVACUATION HORN		SURFACE MOUNTED TWO-TONE 30W ALERT AND EVACUATION HORN SPEAKER TO AS1670.1 C/W 100V MULTI-TAP TRANSFORMER. MOUNT AT HIGH LEVEL.			A
FIRE EVACUATION RECESSED SPEAKER		RECESSED 5W TWO-TONE 8-INCH CONE ALERT AND EVACUATION SPEAKER TO AS1670.1 C/W 100V MULTI-TAP TRANSFORMER AND FLUSH GRILLE WHITE UNLESS NOTED AS BK THEN BLACK.			A
FIRE EVACUATION SURFACE SPEAKER		SURFACE MOUNT 5W TWO-TONE 8-INCH CONE ALERT AND EVACUATION SPEAKER TO AS1670.1 C/W 100V MULTI-TAP TRANSFORMER AND GRILLE WHITE UNLESS NOTED AS BK THEN BLACK.			A
SMOKE DETECTOR		SURFACE MOUNTED AS7240.7 POINT SMOKE DETECTORS WITH A PERFORMANCE OF 6 TO 12 % OBS/M SET AT 7.8 %. WHITE UNLESS NOTED AS BK THEN BLACK.			A
ASPERATING SMOKE DETECTOR		LIFT SHAFT ASPERATING ADDRESSABLE SMOKE DETECTOR WITH THE UNIT LOCATED IN A CONCEALED ACCESSIBLE POSITION IN THE CEILING SPACE. PROVIDE THE DETECTOR WITH A WHITE REMOTE INDICATOR AND ACCESS BRACKET AS REQUIRED.			A
CONCEALED SPACE SMOKE DETECTOR		CONCEALED SPACE ADDRESSABLE AS7240.7 POINT SMOKE DETECTORS WITH A PERFORMANCE OF 6 TO 12 % OBS/M SET AT 7.8 %. PROVIDE THE DETECTOR WITH A WHITE REMOTE INDICATOR AND ACCESS BRACKET AS REQUIRED.			A
THERMAL DETECTOR		SURFACE MOUNTED AS7240.5:2018 TYPE B SEALED FIXED TEMPERATURE ADDRESSABLE THERMAL DETECTOR WHITE UNLESS NOTED AS BK THEN BLACK.			A
FIRE ALARM STROBE		WALL MOUNTED FIRE ALARM STROBE LIGHT AS PER AS1670.1			A
PV SYSTEM INVERTER (INV)		PROVIDE A SUNGROW SG110CX-P2 INVERTER CONTROLLED BY THE SITES EXISTING GRID PROTECTION SYSTEM. PROVIDE THE INVERTER WITH INTERNET ACCESS VIA THE SCHOOLS IT NETWORK.			A



ELECTRICAL DESIGN GROUP

ELECTRICAL BUILDING SERVICES CONSULTANTS

P.O. Box 15, SHERWOOD Q. 4075

Phone: (07) 3278 4375

Website: www.edg.net.au Email: brisbane@edg.net.au

C3475a - KINGS CHRISTIAN COLLEGE - PIMPAMA, SENIOR SCHOOL ADMINISTRATION PIM21 C3475a-0002(A).xls

ELECTRICAL EQUIPMENT SCHEDULE

REVISION A - 16 FEBRUARY 2026

THE EQUIPMENT SUPPLIER CONTACT DETAILS MAY BE AVAILABLE ON THE EDG WEBSITE VIA THE FOLLOWING LINK
www.edg.net.au/links.html

TYPE	LAMPS	DESCRIPTION	COLOUR / ACCESSORY	CATALOGUE No	REV
PV SOLAR PANELS		PROVIDE THE PV PANELS AS TRINA TSM-510NE18R.28 9510W) PANELS			A



ELECTRICAL DESIGN GROUP

ELECTRICAL BUILDING SERVICES CONSULTANTS

P.O. Box 15, SHERWOOD Q. 4075

Phone: (07) 3278 4375

Website: www.edg.net.au Email: brisbane@edg.net.au

C3475a - KINGS CHRISTIAN COLLEGE - PIMPAMA, SENIOR SCHOOL ADMINISTRATION PIM21 C3475a-0004(A).xls

DISTRIBUTION BOARD DB-21P

REVISION A - 16 FEBRUARY 2026

							REV
FAULT CURRENT:			6KA	MAIN SWITCH:			250A NON AUTO LOAD BREAK ISOLATOR
CHASSIS SIZE:			2 X 60 POLE	SUPPLIED FROM:			DB-21
CHASSIS RATING:			250A	SUPPLY CABLE:			4C50
PHASES:			3				
PROVIDE THE DB WITH A FULL WIDTH EMPTY DIN RAIL TO ACCOMMODATE FUTURE CONTACTORS AND CONTROLS. ACCURATELY LABEL EACH CIRCUIT BREAKER WITH THE USE AND THE POSITION.							A
CIRC	PH	CIRCUIT BREAKER (amps)	CONTROL EQUIPMENT	CABLE SIZE (mm ²)	LOCATION	CIRCUIT USE	
P1	1	20	RCBO	2.5	GROUND	CR-21	A
P2	1	20	RCBO	2.5	GROUND	CR-21	A
P3	1	20	RCBO	2.5	GROUND	FUTURE RACK	A
P4	1	20	RCBO	2.5	GROUND	FUTURE RACK	A
P5	1	20	RCBO	2.5	GROUND	FUTURE RACK	A
P6	1	20	RCBO	2.5	GROUND	FUTURE RACK	A
P7	1	20	RCBO	2.5	GROUND	SECURITY	A
P8	1	20	RCBO	2.5	GROUND	MAINTENANCE	A
P9	1	20	RCBO	2.5	GROUND	CLEANER	A
P10	1	20	RCBO	2.5	GROUND	OFFICES	A
P11	1	20	RCBO	2.5	GROUND	DISPLAY	A
P12	1	20	RCBO	2.5	GROUND	WORKROOM	A
P13	1	20	RCBO	2.5	GROUND	RECEPTION	A
P14	1	20	RCBO	2.5	GROUND	PRINTER	A
P15	1	20	RCBO	2.5	GROUND	DRINK FOUNTAIN	A
P16	1	20	RCBO	2.5	GROUND	FIP	A
P17	1	32	RCBO	4.0	GROUND	7KW HWS	A
P18	1	20	RCBO	2.5	GROUND	MAINTENANCE	A
P19	1	20	RCBO	2.5	GROUND	HAND DRYER	A
P20	1	20	RCBO	2.5	GROUND	STORE	A
P21	1	20	RCBO	2.5	GROUND	OFFICES	A
P22	1	20	RCBO	2.5	GROUND	MEETING	A
P23	1	20	RCBO	2.5	GROUND	REFRIGERATOR	A
P24	1	20	RCBO	2.5	GROUND	AUTO BOILER	A
P25	1	20	RCBO	2.5	GROUND	KITCHENETT	A
P26	1	20	RCBO	2.5	LEVEL 1	GLA 1	A
P27	1	20	RCBO	2.5	LEVEL 1	GLA 2	A
P28	1	20	RCBO	2.5	LEVEL 1	GLA 3	A
P29	1	20	RCBO	2.5	LEVEL 1	GLA 4	A
P30	1	20	RCBO	2.5	LEVEL 1	GLA 5	A
P31	1	20	RCBO	2.5	LEVEL 1	GLA 6	A
P32	1	20	RCBO	2.5	LEVEL 1	COMMOM	A
P33	1	20	RCBO	2.5	LEVEL 1	DRINK FOUNTAIN	A
P34	1	20	RCBO	2.5	LEVEL 2	GLA 1	A
P35	1	20	RCBO	2.5	LEVEL 2	GLA 2	A
P36	1	20	RCBO	2.5	LEVEL 2	GLA 3	A
P37	1	20	RCBO	2.5	LEVEL 2	GLA 4	A
P38	1	20	RCBO	2.5	LEVEL 2	GLA 5	A
P39	1	20	RCBO	2.5	LEVEL 2	GLA 6	A
P40	3	40	RCBO TYPE B	6.0	LEVEL 2	LIFT	A
P41	1	20	RCBO	2.5	LEVEL 2	DRINK FOUNTAIN	A
P42	1	20	RCBO	2.5	LEVEL 2	COMMOM	A
P43	1	20	RCBO	2.5	LEVEL 2	PRINTER	A
P44	3	32	RCBO	4.0	LEVEL 2	7KW HWS	A



ELECTRICAL DESIGN GROUP

ELECTRICAL BUILDING SERVICES CONSULTANTS

P.O. Box 15, SHERWOOD Q. 4075

Phone: (07) 3278 4375

Website: www.edg.net.au Email: brisbane@edg.net.au

C3475a - KINGS CHRISTIAN COLLEGE - PIMPAMA, SENIOR SCHOOL ADMINISTRATION PIM21 C3475a-0005(A).xls

DISTRIBUTION BOARD DB-21L

REVISION A - 16 FEBRUARY 2026

<div>FAULT CURRENT: 6KA</div> <div>CHASSIS SIZE: 84 POLE</div> <div>CHASSIS RATING: 250A</div> <div>PHASES: 3</div> <div>MAIN SWITCH: 250A NON AUTO LOAD BREAK ISOLATOR</div> <div>SUPPLIED FROM: DB-21</div> <div>SUPPLY CABLE: 4C25</div>							REV
							A
							A
							A
PROVIDE THE DB WITH A FULL WIDTH EMPTY DIN RAIL TO ACCOMMODATE FUTURE CONTACTORS AND CONTROLS. ACCURATELY LABEL EACH CIRCUIT BREAKER WITH THE USE AND THE POSITION. PROVIDE THE DB WITH AN AS2293 EMERGENCY LIGHT TESTING FACILITY AND SURGE PROTECTION. REFER TO THE NOTES FOR ADDITIONAL CONSTRUCTION REQUIREMENTS.							A
CIRC	PH	CIRCUIT BREAKER (amps)	CONTROL EQUIPMENT	CABLE SIZE (mm ²)	LOCATION	CIRCUIT USE	
1	1	20	RCBO PE ON DUSK OFF DAWN	2.5	EXTERNAL	SECURITY LIGHTS	A
2	1	20	RCBO PE ON DUSK TC OFF 10.00PM	2.5	EXTERNAL	LIGHTING	A
3	1	20	RCBO PE ON DAWN TC OFF 10.00PM	2.5	EXTERNAL	LIGHTING	A
4	1	20	RCBO PE ON DUSK TC OFF 10.00PM	2.5	EXTERNAL	LIGHTING	A
5	1	20	RCBO PE ON DUSK TC OFF 10.00PM	2.5	EXTERNAL	LIGHTING	A
6	1	20	RCBO PE ON DAWN TC OFF 10.00PM	2.5	EXTERNAL	LIGHTING	A
7	1	20	RCBO INTERFACED TO THE SECURITY SYSTEM	2.5	GROUND	RECEPTION LIGHTING	A
8	1	20	RCBO INTERFACED TO THE SECURITY SYSTEM	2.5	GROUND	OFFICE LIGHTING	A
9	1	20	RCBO INTERFACED TO THE SECURITY SYSTEM	2.5	GROUND	CIRCULATION LIGHTING	A
10	1	20	RCBO INTERFACED TO THE SECURITY SYSTEM	2.5	GROUND	OFFICE LIGHTING	A
11	1	20	RCBO INTERFACED TO THE SECURITY SYSTEM	2.5	GROUND	OFFICE LIGHTING	A
12	1	20	RCBO INTERFACED TO THE SECURITY SYSTEM	2.5	GROUND	WORKSTATION LIGHTING	A
13	1	20	RCBO INTERFACED TO THE SECURITY SYSTEM	2.5	LEVEL 1	GLA 1 LIGHTING	A
14	1	20	RCBO INTERFACED TO THE SECURITY SYSTEM	2.5	LEVEL 1	GLA 2 LIGHTING	A
15	1	20	RCBO INTERFACED TO THE SECURITY SYSTEM	2.5	LEVEL 1	GLA 3 LIGHTING	A
16	1	20	RCBO INTERFACED TO THE SECURITY SYSTEM	2.5	LEVEL 1	GLA 4 LIGHTING	A



ELECTRICAL DESIGN GROUP

ELECTRICAL BUILDING SERVICES CONSULTANTS

P.O. Box 15, SHERWOOD Q. 4075

Phone: (07) 3278 4375

Website: www.edg.net.au Email: brisbane@edg.net.au

C3475a - KINGS CHRISTIAN COLLEGE - PIMPAMA, SENIOR SCHOOL ADMINISTRATION PIM21 C3475a-0005(A).xls

DISTRIBUTION BOARD DB-21L

REVISION A - 16 FEBRUARY 2026

<div>FAULT CURRENT: 6KA</div> <div>CHASSIS SIZE: 84 POLE</div> <div>CHASSIS RATING: 250A</div> <div>PHASES: 3</div> <div>MAIN SWITCH: 250A NON AUTO LOAD BREAK ISOLATOR</div> <div>SUPPLIED FROM: DB-21</div> <div>SUPPLY CABLE: 4C25</div>							REV
							A
							A
							A
PROVIDE THE DB WITH A FULL WIDTH EMPTY DIN RAIL TO ACCOMMODATE FUTURE CONTACTORS AND CONTROLS. ACCURATELY LABEL EACH CIRCUIT BREAKER WITH THE USE AND THE POSITION. PROVIDE THE DB WITH AN AS2293 EMERGENCY LIGHT TESTING FACILITY AND SURGE PROTECTION. REFER TO THE NOTES FOR ADDITIONAL CONSTRUCTION REQUIREMENTS.							A
CIRC	PH	CIRCUIT BREAKER (amps)	CONTROL EQUIPMENT	CABLE SIZE (mm ²)	LOCATION	CIRCUIT USE	
17	1	20	RCBO INTERFACED TO THE SECURITY SYSTEM	2.5	LEVEL 1	GLA 5 LIGHTING	A
18	1	20	RCBO INTERFACED TO THE SECURITY SYSTEM	2.5	LEVEL 1	GLA 6 LIGHTING	A
19	1	20	RCBO INTERFACED TO THE SECURITY SYSTEM	2.5	LEVEL 1	CIRCULATION LIGHTING	A
20	1	20	RCBO INTERFACED TO THE SECURITY SYSTEM	2.5	LEVEL 2	GLA 1 LIGHTING	A
21	1	20	RCBO INTERFACED TO THE SECURITY SYSTEM	2.5	LEVEL 2	GLA 2 LIGHTING	A
22	1	20	RCBO INTERFACED TO THE SECURITY SYSTEM	2.5	LEVEL 2	GLA 3 LIGHTING	A
23	1	20	RCBO INTERFACED TO THE SECURITY SYSTEM	2.5	LEVEL 2	GLA 4 LIGHTING	A
24	1	20	RCBO INTERFACED TO THE SECURITY SYSTEM	2.5	LEVEL 2	GLA 5 LIGHTING	A
25	1	20	RCBO INTERFACED TO THE SECURITY SYSTEM	2.5	LEVEL 2	GLA 6 LIGHTING	A
26	1	20	RCBO INTERFACED TO THE SECURITY SYSTEM	2.5	LEVEL 2	CIRCULATION LIGHTING	A

LEGEND

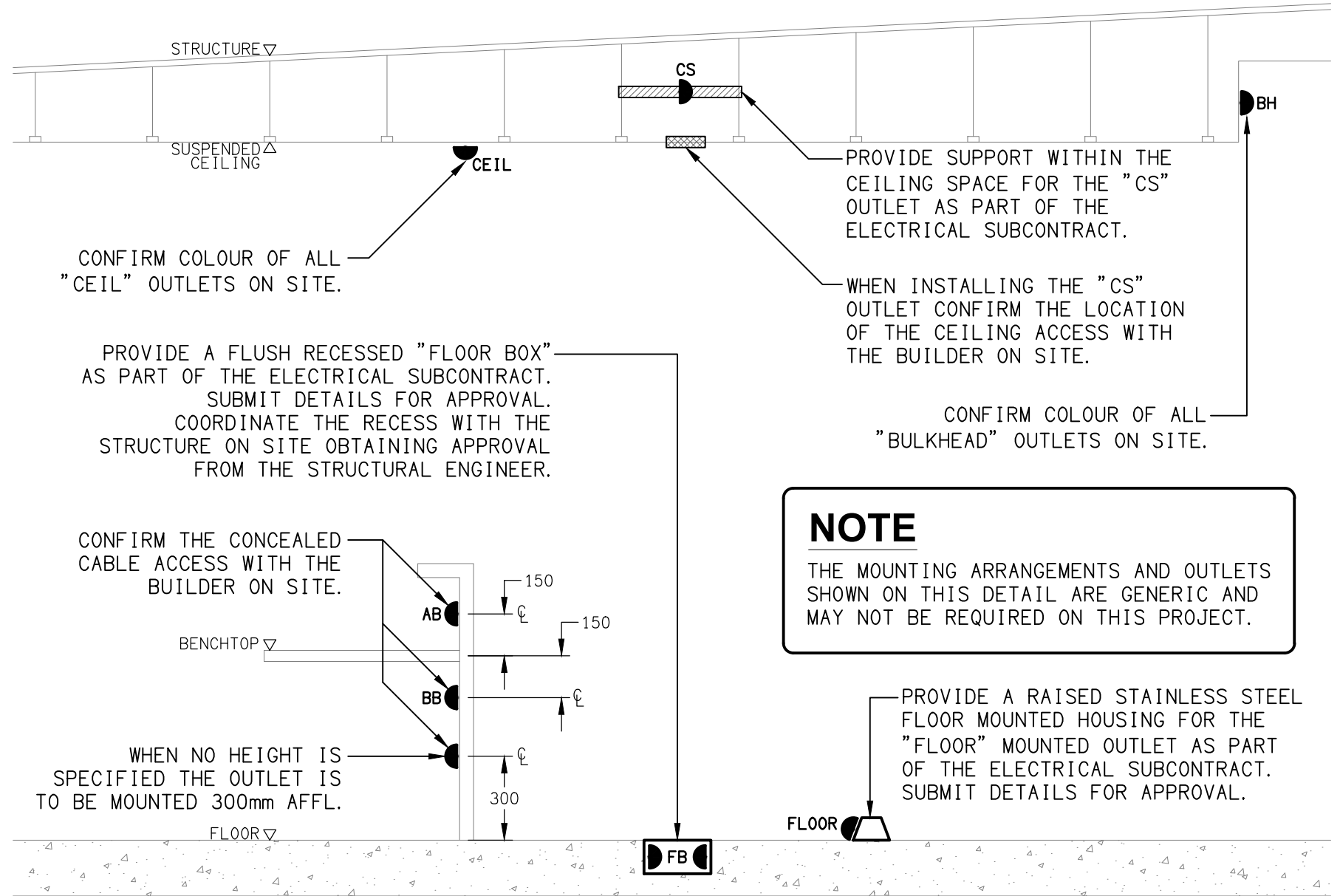
	ELECTRICAL SERVICES SWITCHBOARD.
	SWITCHBOARD / CONTROL PANEL NOT PROVIDED AS PART OF THE ELECTRICAL SUBCONTRACT.
	SINGLE POWER OUTLET.
	DOUBLE POWER OUTLET.
	SPECIAL PURPOSE POWER OUTLET.
	SINGLE PHASE ISOLATOR.
	THREE PHASE ISOLATOR.
	JUNCTION BOX AS NOTED.
	ELECTRICAL CABLE TRAY, TYPE AS NOTED.
	WORKSTATION OUTLETS.
	CONDUIT ROUTE.
	x DENOTES CONDUIT TYPE.
	ELECTRICAL PIT, TYPE AS NOTED.
	HAND DRYER CONNECTION.
	LIGHTING PRESENCE DETECTOR SWITCH.
	ONE-WAY LIGHT SWITCH.
	TWO-WAY LIGHT SWITCH.
	LIGHTING SWITCHPANEL, TYPE x.
	CIRCUIT LINE.
	SWITCH LINE.
	POWER CIRCUIT DESIGNATION. DENOTES DB AND CIRCUIT.
	ELECTRICAL EQUIPMENT AS NOTED.
	FITTING TO BE SURFACE MOUNTED.
	OUTLET MOUNTED WITHIN RECESS KIT.
	CAT-6 UTP RJ45 COMMUNICATIONS OUTLET.
	CAT-6A STP RJ45 COMMUNICATIONS OUTLET.
	CAT-6 CCTV RJ45 PLUG, TYPE x.
	CAT-6 VAPE RJ45 PLUG.
	COMBINED FUSE SWITCH.
	CIRCUIT BREAKER.
	ISOLATOR.
	RESIDUAL CURRENT DEVICE.
	CONTACTOR – NORMALLY OPEN.
	CONTACTOR – NORMALLY CLOSED.

LEGEND

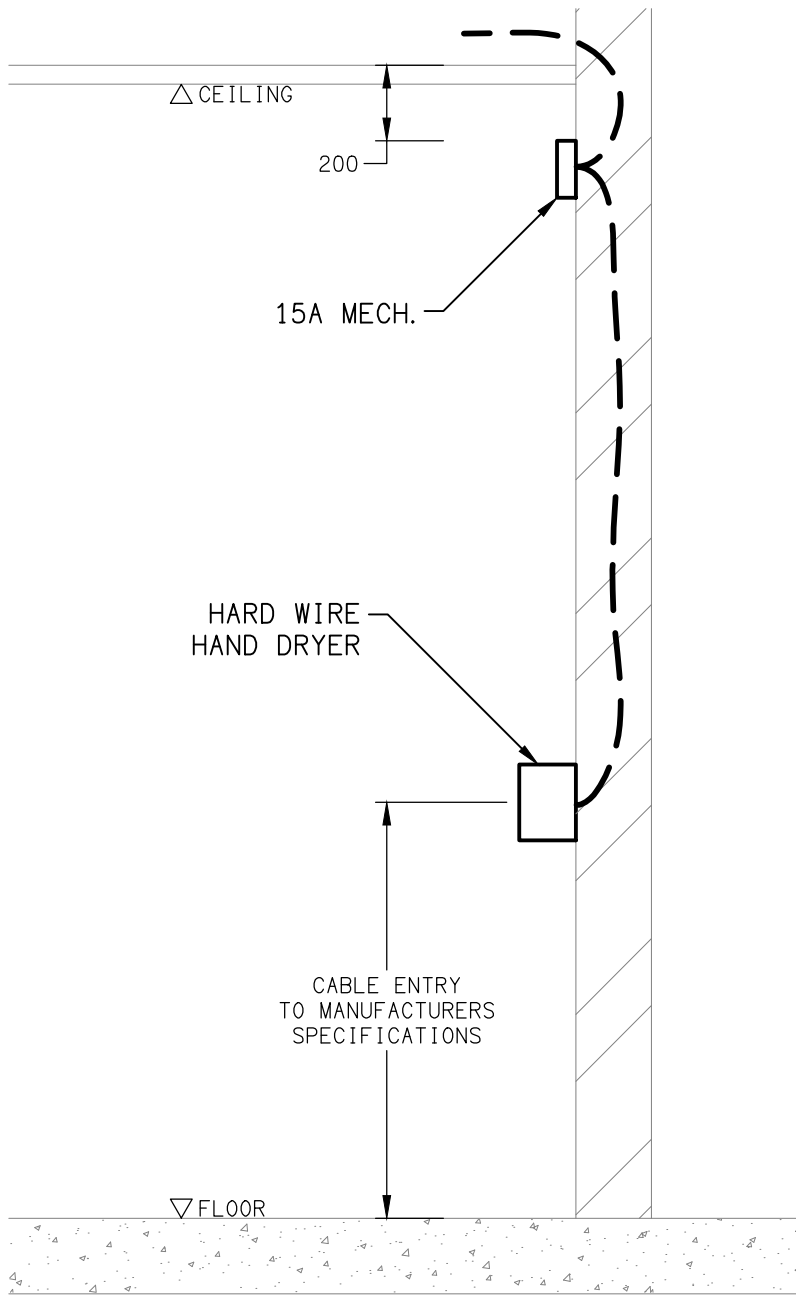
	E1: RECESSED LED EMERGENCY LIGHT, WHITE.
	E2: SURFACE MOUNTED LED EMERGENCY LIGHT, WHITE.
	E3: RECESSED LED EMERGENCY LIGHT, BLACK.
	E4: SURFACE LED EMERGENCY LIGHT, WHITE.
	EX: EMERGENCY LED EXIT LIGHT, WHITE.
	L1: 2400 LONG ROD SUSPENDED EXTRUSION LIGHT.
	L2: FLEXIABLE LED STRIP LIGHT MOUNTED IN THE CEILING PELMET.
	L3: CURVED ROD SUSPENDED EXTRUSION LIGHT.
	L4: SURFACE MOUNTED CAN DOWN LIGHT.
	L5: SURFACE MOUNTED BUNKER LIGHT.
	L6: RECESSED DOWNLIGHT.
	L7: SURFACE MOUNTED BUNKER LIGHT.
	L8: 600 x 600 SURFACE MOUNTED FLAT PLATE LED LIGHT WHITE.
	L9: RECESSED DOWNLIGHT.
	L10: RECESSED DOWNLIGHT.
	L11: 600 x 600 SURFACE MOUNTED FLAT PLATE LED LIGHT BLACK.
	L12: INGROUND UPLIGHT.
	L13: RECESSED DOWNLIGHT.
	L14: RECESSED DOWNLIGHT.
	L15: 4800 LONG ROD SUSPENDED EXTRUSION LIGHT.
	L16: 2600 LONG ROD SUSPENDED EXTRUSION LIGHT.
	L17: OVERHEAD CUPBOARD SPLASHBACK LED STRIP LIGHT.
	FIRE INDICATOR PANEL INCORPORATING THE EWCIE AND FDCIE.
	SURFACE MOUNTED ADDRESSABLE SMOKE DETECTOR.
	CONCEALED SPACE ADDRESSABLE SMOKE DETECTOR.
	ASPERATING SMOKE DETECTOR.
	MAGNETIC DOOR HOLDERS.
	DOOR RELEASE PUSH BUTTON.
	SURFACE MOUNTED THERMAL DETECTOR.
	SURFACE MOUNTED EMERGENCY EVACUATION SPEAKER.
	RECESSED EMERGENCY EVACUATION SPEAKER.
	SURFACE MOUNTED EVACUATION HORN SPEAKER.
	WALL MOUNTED FIRE ALARM STROBE.
	PUBLIC ADDRESS RECESSED SPEAKER.
	PUBLIC ADDRESS SURFACE MOUNTED SPEAKER.
	PUBLIC ADDRESS HORN SPEAKER.

LEGEND

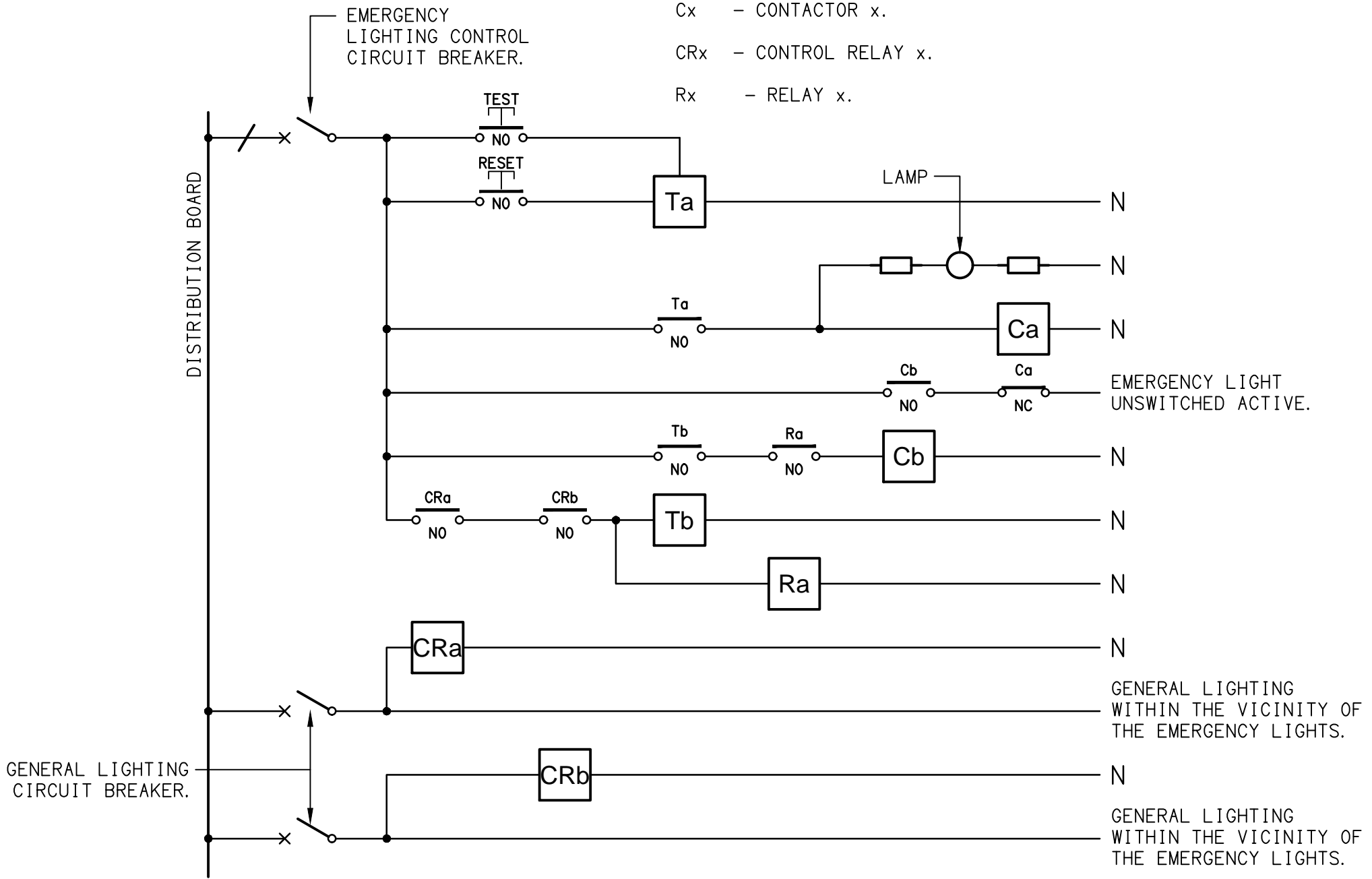
	RETAIL METER.
	PRIVATE MULTI FUNCTION METER.
	NCC BCA PART J ENERGY METER.
	SMART SOLAR ENERGY METER.
	MANUAL TRANSFER SWITCH.
	GRID PROTECTION CONTACTOR.
	WIRELESS PROTECTION RELAY MASTER.
	WIRELESS PROTECTION RELAY SLAVE.
	GRID PROTECTION MASTER RELAY.
	GRID PROTECTION SLAVE RELAY.
	SOLAR DATA LOGGER.
	SOLAR GENERATION SIGNALING DEVICE.
	REFER TO DETAIL NOTED FOR THE AREA SHOWN HATCHED. ADDITIONAL OUTLETS & FITTINGS MAY BE SHOWN ON DETAIL.
	FUSE.
	SINGLE PHASE.
	THREE PHASE.
	CURRENT TRANSFORMER C/W REMOVABLE LINK.
	FUSE LINK.



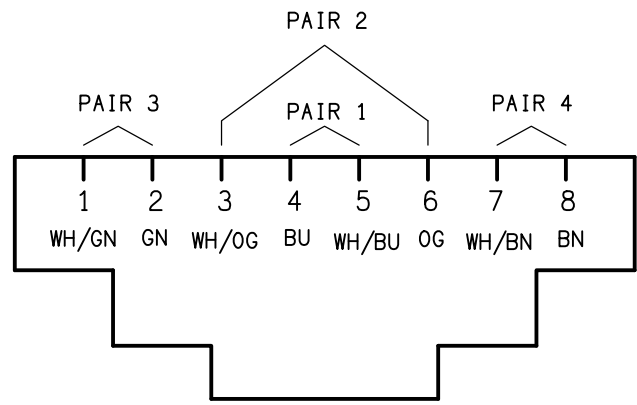
DETAIL
TYPICAL OUTLET MOUNTINGS
NOT TO SCALE



DETAIL
HAND DRYER CONNECTION
NOT TO SCALE



SCHEMATIC
EMERGENCY LIGHTING
NOT TO SCALE



SCHEMATIC
RJ45 PINOUT CONFIGURATION
NOT TO SCALE

NOTES

1. THE EMERGENCY LIGHT UNSWITCHED ACTIVE / GENERAL LIGHTING SWITCHED ACTIVE CIRCUIT ARRANGEMENT AND CONTROL IS TYPICAL FOR ALL CIRCUITS SUPPLYING EMERGENCY LIGHTS.
2. PROVIDE ADDITIONAL CONTROL RELAYS (CRx) CONFIGURED AS PER CRa AND CRb FOR ALL ADDITIONAL LIGHTING CIRCUITS THAT SUPPLY LIGHTS IN THE VICINITY OF THE EMERGENCY LIGHTS.

NOTES

1. EXTENT OF WORKS

THE ELECTRICAL SERVICES SUB-CONTRACT INCLUDES BUT IS NOT LIMITED TO THE FOLLOWING:

- SUPPLY AND INSTALLATION OF ALL COMPONENTS FORMING PART OF THE ELECTRICAL SERVICES.
- CO-ORDINATION.
- INSPECTIONS.
- TESTING AND COMMISSIONING.
- MAINTENANCE.
- UPDATE THE EXISTING AS BUILT DRAWINGS.
- UPDATE THE EXISTING MAINTENANCE MANUAL.
- CABLING, CABLE SUPPORT SYSTEMS AND ACCESS.
- POWER DISTRIBUTION.
- LIGHTING.
- COMMUNICATIONS CABLING.
- PUBLIC ADDRESS SYSTEM.
- FIRE ALARM SYSTEM.
- AS CONSTRUCTED DOCUMENTS.
- CORROSION PROTECTION
- ALL WORKS AND MATERIALS TO CREATE A SAFE WORK SITE INCLUDING RESTRICTING ACCESS TO NON-AUTHORISED PEOPLE.
- ALL MACHINERY REQUIRED TO COMPLETE THE INSTALLATION INCLUDING LIFTING AND HOISTING MACHINERY, TRANSPORTATION MACHINERY, WINCHES, FORKLIFTS, SCISSOR LIFTS, HOISTS, BOOMS, CHERRY PICKERS.
- ALL NECESSARY WASTE MANAGEMENT AND WASTE REMOVAL.
- ALL MINOR COMPONENTS AND INCIDENTAL WORKS NOT SPECIFICALLY REFERRED TO, HOWEVER NECESSARY TO COMPLETE THE ELECTRICAL SERVICES INSTALLATION SUCH THAT IT IS HANDED OVER COMPLETE, OPERATIONAL AND FIT FOR THE INTENDED USE.

SUPPLY ALL LABOUR, MATERIALS, EQUIPMENT, AND ALL OTHER ITEMS, WHETHER MENTIONED IN DETAIL OR NOT, REQUIRED FOR THE SATISFACTORY COMPLETION OF THE ELECTRICAL SERVICES INSTALLATION, LEAVING IN FULL WORKING ORDER TO THE SATISFACTION OF THE PROJECT MANAGER.

ACCEPT FULL RESPONSIBILITY FOR LIASING, ARRANGING AND CO-ORDINATION OF ALL WORKS THAT HAVE AN EFFECT ON OR WILL BE AFFECTED BY THE ELECTRICAL SERVICES.

CONFIRM THE POSITION OF ALL OUTLETS ON SITE WITH THE COLLEGE PRIOR TO ROUGH-IN.

UPDATE THE COLLEGES EXISTING AS BUILT DOCUMENTS AND MAINTENANCE MANUAL TO INCLUDE THE NEW WORKS.

2. WORKMANSHIP

ENSURE THAT THE WORK IS PERFORMED BY THE HOLDER OF A CURRENT ELECTRICAL SUB CONTRACTOR LICENSE. ENSURE THE INSTALLATION AND ALL COMPONENTS, FIXTURES, FITTINGS, OUTLETS AND CABLES ARE SUPPLIED AND INSTALLED TO A HIGH STANDARD THROUGHOUT, AND INSTALLED IN A NEAT AND TRADESMAN LIKE MANNER, TO THE CURRENT INDUSTRY STANDARDS. ENSURE ALL MATERIALS AND COMPONENTS OF A SIMILAR TYPE ARE OF THE SAME MANUFACTURER AND INSTALLED IN A UNIFORM MANNER.

IT IS THE ELECTRICAL SUB CONTRACTOR’S RESPONSIBILITY TO ENSURE THAT THE INSTALLATION IS FIT FOR PURPOSE AND IS PROVIDED AS A COMPLETE WORKING INSTALLATION. IT IS THE ELECTRICAL SUB CONTRACTOR’S RESPONSIBILITY TO PROVIDE ALL COMPONENTS, FITTINGS, FIXTURES, SYSTEMS, PROGRAMMING ETC IRRESPECTIVE OF THE LEVEL DETAILED IN THE DOCUMENTS SUCH THAT THE INSTALLATION IS PROVIDED AS A COMPLETE WORKING INSTALLATION.

CONCEAL ALL WIRING AND CONDUITS. EXPOSED CABLING OR CONDUITS ARE GENERALLY NOT ACCEPTABLE. IT IS NOTED THAT CONDUITS WILL NEED TO BE INCLUDED WITHIN THE PRECAST PANELS. ENSURE ALL COMPONENTS, EQUIPMENT AND MATERIALS SUPPLIED ARE NEW, UNUSED, DESIGNED AND SELECTED TO ENSURE SATISFACTORY OPERATION UNDER VARYING ATMOSPHERIC, CLIMATIC, HUMID TROPICAL CONDITIONS WITHOUT DISTORTION AND DETERIORATION IN ANY PART AFFECTING EFFICIENCY AND RELIABILITY OF THE SYSTEMS. DESIGN AND SELECT ALL EQUIPMENT TO PROVIDE THE NECESSARY SAFETY TO HUMAN LIFE AND PROPERTY DURING OPERATION AND MAINTENANCE WITH PARTICULAR ATTENTION GIVEN TO ELECTRICAL SAFETY AND SEGREGATION PRECAUTIONS.

CHECK THE FINISHED PAINTWORK AROUND THE AREA OF EACH INSTALLATION AND TOUCH UP ALL DAMAGED PARTS AND FINISHES AFTER THE INSTALLATION OF THE ELECTRICAL SERVICES.

ALL WORKS ARE TO BE CARRIED OUT IN ACCORDANCE WITH THE BUILDER’S PROGRAM. ENSURE ALL FINAL LOCATIONS OF OUTLETS AND FITTINGS ARE CO-ORDINATED ONSITE WITH THE ARCHITECT AND ALL OTHER SERVICES, TO THE APPROVAL OF THE PROJECT MANAGER. ALLOW TO CO-ORDINATE THE FINAL LOCATION OF ALL EQUIPMENT, FITTINGS, & OUTLETS, SUCH THAT THEY ARE INSTALLED IN ACCORDANCE WITH THE AS3000 RESTRICTED ZONES, AND ARE NOT COVERED INAPPROPRIATELY.

ENSURE THAT ALL METAL SURFACES ARE SUITABLY PROTECTED AGAINST CORROSION, AND THAT ALL PLASTIC MATERIALS ARE UV STABILISED.

PROVIDE ALL MATERIALS AS NEW, AND OF THE HIGHEST CLASS AVAILABLE FOR THEIR RESPECTIVE TYPES. ENSURE ALL ASPECTS OF THE WORK ARE OF A HIGH STANDARD THROUGHOUT, AND INSTALLED IN A NEAT AND TRADESMAN LIKE MANNER, TO THE CURRENT INDUSTRY STANDARDS.

ALL WORK IS TO BE UNDERTAKEN IN SUCH A MANNER THAT THE OPERATION OF THE REMAINING COLLEGE AREAS ARE NOT UNDULY EFFECTED BY THE WORKS.

3. STANDARDS

IRRESPECTIVE OF INFORMATION CONTAINED IN THE FIRE ALARM SYSTEM DOCUMENTS OR IN INSTRUCTIONS, IT IS THE FIRE ALARM SYSTEM SUB CONTRACTOR’S RESPONSIBILITY TO ENSURE ALL FIRE ALARM SYSTEM WORKS ARE INSTALLED IN ACCORDANCE WITH THE REQUIREMENTS OF THE FOLLOWING. REFER ANY DISCREPANCIES BETWEEN THE REQUIREMENTS OF THE FOLLOWING AND/OR THE FIRE ALARM SYSTEM DOCUMENTS AND INSTRUCTIONS TO THE ARCHITECT FOR CLARIFICATION PRIOR TO THE PLACING OF ORDERS, FABRICATION OR INSTALLATION OF THE ITEMS/METHODS IN DISCREPANCY.

- NCC BUILDING CODE OF AUSTRALIA.
- FIRE ENGINEERING REPORT.
- ELECTRICITY ACT.
- ELECTRICAL SAFETY ACT.
- AS/NZS3000.
- AS3008.
- AS1670. 1.
- AS/NZS 5033: 2021.
- AS/NZS 4777. 1: 2024
- WORKPLACE HEALTH AND SAFETY ACT.
- TELECOMMUNICATIONS ACT.
- ACMA REQUIREMENTS.

4. AUTHORITIES

ENSURE ALL OF THE ELECTRICAL SERVICES COMPLY WITH THE REQUIREMENTS OF ALL REGULATORY AUTHORITIES HAVING JURISDICTION OVER THE SITE INCLUDING BUT NOT LIMITED TO THE FOLLOWING:

- ACMA.
- LOCAL COUNCIL.
- LOCAL SUPPLY AUTHORITY.
- STATE GOVERNMENT WORKPLACE, HEALTH AND SAFETY AUTHORITY.
- LOCAL FIRE AND RESCUE AUTHORITY.
- SOLAR ACCREDITATION AUSTRALIA.

5. CABLES

UNLESS OTHERWISE SPECIFIED, INSTALL AND TERMINATE CABLES IN ACCORDANCE WITH THE MANUFACTURERS’ RECOMMENDATIONS. DETERMINE THE FINAL ROUTES TO SUIT THE BUILDING STRUCTURE AND SITE CONDITIONS. UNLESS NOTED OTHERWISE, PROVIDE ALL 240 VOLT POWER AND LIGHTING WIRING AS 2.5mm² TWIN & EARTH STRANDED COPPER CONDUCTORS, PVC INSULATED 0.6/1kV V75 GRADE TO AS3174, PROTECTED BY A 20 AMP CIRCUIT BREAKER. ALL CONDUIT AND FITTINGS TO BE RIGID UPVC TO AS2053, UNLESS NOTED OTHERWISE.

NOTES

6. POWER DISTRIBUTION

THE POWER DISTRIBUTION COMPONENT OF THIS CONTRACT INCLUDES REPLACING THE EXISTING SITE MAIN SWITCHBOARD DURING THE SEPTEMBER 2026 SCHOOL HOLIDAYS. THE EXISTING MSB TRENCH AND ADJACENT PITS ARE TO BE REPLACED WITH A LARGER TRENCH. THE EXISTING CONDUITS ARE TO BE CONNECTED TOT EH NEW TRENCH AND ALL EXISTING CONSUMERS MAINS AND SUBMAINS RECONNECTED TO THE NEW MSB. THE NEW MSB IS TO CONTAIN A DISTRIBUTION BOARD TO ALLOW THE EXISTING CIRCUITS AND CONTROLS TO BE RECONNECTED AS WELL AS OEM COMPLIANT METERING AND SOLAR GRID PROTECTION. ENSURE THE SOLAR GRID PROTECTION IS COMPATIBLE WITH THE SITES EXISTING SOLAR SYSTEM AND THE NEW PIM21 SOLAR SYSTEM.

NEW UNDERGROUND CONDUITS ARE TO BE PROVIDED FROM THE NEW MSB TRENCH TO A NEW PIT (PIT C) AND ON TO BUILDING PIM21. NEW UNDERGROUND SUBMAINS ARE TO BE PROVIDED FROM THE MSB TO A NEW DISTRIBUTION BOARD DB-21 IN BUILDING PIM21. PROVIDE DB-21 WITH MCCBS TO SUPPLY THE NEW DISTRIBUTION BOARDS DB-21P, DB-21L AND THE MECHANICAL SWITCHBOARD MSSB-21 AS WELL AS THE NEW SOLAR INVERTER.

PROVIDE DB-21 WITH SPACE FOR SOLAR PROTECTION EQUIPMENT, THE ENERGY MONITORING EQUIPMENT AND 24 SPARE DIN RAIL POLES FOR THE FUTURE CONNECTION SOLAR / BATTERIES AS PER J9D5 OF THE NCC BCA 2022. LABEL ONE OF THE SPARE CIRCUIT BREAKER POSITIONS AND TWELVE OF THE DIN RAIL SPACES (RESERVED FOR SOLAR / BATTERIES).

PROVIDE AN ENERGY MONITORING SYSTEM AS PER J9D3 OF THE NCC BCA 2022 THAT COLLECTS THE TIME-OF-USE ENERGY DATA TO A SINGLE INTERFACE WHERE IT CAN BE STORED, ANALYSED AND REVIEWED. SUBMIT DETAILS OF THE ENERGY MONITORING SYSTEM FOR APPROVAL.

THE ELECTRICAL COMPONENT OF THIS CONTRACT INCLUDES, BUT IS NOT LIMITED TO THE FOLLOWING EXTENT OF WORK:

- POWER DISTRIBUTION.
- EARTHING.
- NEW MAIN SWITCHBOARD (MSB).
- NEW MSB TRENCH.
- PROVIDE A NEW MCCB IN THE MSB.
- NEW UNDERGROUND CONDUITS AND SUBMAINS FROM THE MSB TO DB-21.
- ENERGY MONITORING SYSTEM.
- DISTRIBUTION BOARDS DB-21, DB-21P AND DB-21L.
- SUBMAINS FROM DB-21 TO DB-21P, DB-21L AND MSSB-21.
- PROVIDE AN INFRARED SCAN OF THE MSB AND ALL DISTRIBUTION BOARDS PROVIDED AS PART OF THE WORKS ONE WEEK AFTER PRACTICAL COMPLETION. PROVIDE A LOGGING CHART RECORDING OF THE MAINS CURRENT, VOLTAGE, FREQUENCY FOR THE FIRST 14 DAYS FOLLOWING PRACTICAL COMPLETION AND SUBMIT THE THERMOSCAN AND CHART RECORDING AND FOR APPROVAL.
- CIRCUITS.
- ISOLATORS AND OUTLETS.
- TESTING AND COMMISSIONING.
- SWITCHBOARD SHOP DRAWING.

PROVIDE THE SITE MAIN SWITCHBOARD (MSB) AS FOLLOWS:

- REFER TO THE POWER SCHEMATIC.
- PLINTH MOUNTED FREE STANDING.
- OEM COMPLIANT RETAIL METERING. NMI 3120216238
- 92268 KEY LOCKABLE IP66 (316 STAINLESS STEEL OR ALUMINIUM) POWDER COATED COLOURBOND SURF MIST C/W INTERNAL TEMPERATURE CONTROLLED ANTI CONDENSATION HEATERS IN EACH CUBICAL.
- ENSURE THE MSB IS DESIGNED TO OPERATE IN DIRECT SUNLIGHT WITH AN AMBIENT TEMPERATURE OF 40 DEGREES.
- WHITE ESCUTCHEON.
- BOTTOM ENTRY CABLE ACCESS ONLY.
- SUN / RAIN HOOD.
- TEMPERATURE CONTROLLED ANTI CONDENSATION HEATERS IN EACH CUBICAL.
- 36 POLE 250A 3 PHASE VERTICAL DIN STYLE CHASSIS DISTRIBUTION BOARD DB-M INTEGRAL TO THE MSB.
- TWO 600 WIDE HORIZONTAL DIN RAILS.
- RESUPPLY ALL OF THE EXISTING DB-M CIRCUITS FROM THE NEW DB-M WITH NEW SWITCHGEAR AND CONTROLS REFLECTING THE EXISTING IN CAPACITY AND FUNCTION.
- DOORS ON ALL CUBICLES WITH 3 POINT 92268 KEY LOCKABLE HANDLES OTHER THAN THE METER CUBICAL DOOR WHICH IS TO HAVE AN ENERGEX PADLOCK.
- LIFT OFF HINGES ON ALL DOORS AND ESCUTCHEONS.
- 1/4 TURN LATCHES AND D HANDLES ON ALL ESCUTCHEONS.
- ALL SWITCHGEAR TO BE NHP/TERASAKI.
- PROVIDE SHOP DRAWINGS FOR APPROVAL.
- ENERGEX PADLOCK ON THE METER CUBICAL.
- TWO ENERGEX PADLOCK KEYS AND TWO 92268 KEYS.
- OBTAIN APPROVAL FROM ENERGEX OF THE NEW MSB SHOP DRAWINGS.
- PROVIDE A COPY OF THE ENERGEX APPROVAL OF THE MSB.

PROVIDE DISTRIBUTION BOARDS DB-12, DB-12P AND DB-12L AS FOLLOWS:

- REFER TO THE POWER SCHEMATIC.
- REFER TO THE DISTRIBUTION BOARD SCHEDULES.
- WALL MOUNTED.
- 92268 KEY LOCKABLE.
- IP44 MILD STEAL LIGHT GRAY ENCLOSURE.
- WHITE ESCUTCHEON.
- LIFT OFF HINGES ON ALL DOORS AND ESCUTCHEONS.
- 1/4 TURN LATCHES AND D HANDLES ON ALL ESCUTCHEONS.
- ALL SWITCHGEAR TO BE NHP/TERASAKI.
- PROVIDE SHOP DRAWINGS FOR APPROVAL.

THE POWER SUPPLY TO THE REMAINDER OF THE COLLEGE MUST BE MAINTAINED AT ALL TIMES THE COLLEGE IS OPEN INCLUDING THE AFTER HOURS CARE. ANY INTERRUPTION TO THE POWER SUPPLY MUST BE ADVISED TO THE COLLEGE IN WRITING TWO WEEKS PRIOR.

REFER TO THE POWER SCHEMATIC AND DISTRIBUTION BOARD SCHEDULES FOR ADDITIONAL REQUIREMENTS AND CIRCUIT DETAILS.

ENSURE ALL OUTLETS AND ISOLATORS ARE POSITIONED SUCH THAT THEY ARE NOT COVERED BY THE EQUIPMENT. THE FINAL POSITION OF ALL OUTLETS AND ISOLATORS ARE TO BE CONFIRMED ON SITE BY THE COLLEGE.

7. SOLAR PV SYSTEM

PROVIDE BUILDING PIM 21 WITH A 100KW SOLAR PV INSTALLATION AS AN EXTENSION TO THE SITES EXISTING PV SYSTEM AS FOLLOWS:

- UNDERTAKEN BY AN INSTALLER WITH SOLAR ACCREDITATION AUSTRALIA (SAA) DESIGN AND INSTALLATION ACCREDITATION.
- ENERGEX APPROVALS, FEES AND CHARGES.
- RPEQ ENGINEERING AND DESIGN.
- SUPPLY AND INSTALLATION OF ALL COMPONENTS FORMING PART OF THE SOLAR SYSTEM INSTALLATION.
- ALL CABLING MUST BE COPPER.
- PROVIDE A ALUMINIUM OR HOT DIPPED GALVANIZED PV PANEL SUPPORT SYSTEM.
- PROVIDE THE SOLAR SYSTEM DC AND AC CABLING THAT HAS A LESS THAN COMBINED LOSS LESS THAN 3%.
- PROVIDE SHOP DRAWINGS AND TECHNICAL DETAILS OF EACH SOLAR SYSTEM INCLUDING ALL COMPONENTS AND THE PV PANEL LAYOUTS FOR APPROVAL.
- PROVIDE A HARD COPY OF THE ENTIRE SYSTEM DESIGN AND ALL INFORMATION ASSOCIATED WITH EACH SOLAR SYSTEM IN A PERMANENT DOCUMENT HOLDER ADJACENT EACH SYSTEM INVERTER.
- SIGNAGE AND LABELS.
- AC AND DC CABLING.
- AC AND DC ISOLATORS.
- PROVIDE THE INVERTER WITH NETWORK PROTECTION INTERFACED TO THE SITES EXISTING WIRELESS NETWORK PROTECTION SYSTEM.

NOTES

8. LIGHTING

THE LIGHTING COMPONENT OF THIS CONTRACT INCLUDES INTERNAL LIGHTING TO ALL AREAS OF THE BUILDING, EXTERNAL LIGHTING, GENERAL LIGHTING CONTROL, EMERGENCY AND EVACUATION LIGHTING AND THE LIGHTING SUB CIRCUIT WIRING. ALL OF THE LIGHT FITTINGS AND ACCESSORIES ARE TO BE PROVIDED AS PART OF THIS CONTRACT. ALL LIGHT SOURCES ARE TO BE SOLID STATE LED WITH A 5-YEAR MANUFACTURERS WARRANTY. ALL OF THE LIGHT FITTINGS, LAMPS AND ACCESSORIES ARE TO BE PROVIDED AS PART OF THIS CONTRACT. THE LIGHTING COMPONENT OF THIS CONTRACT INCLUDES, BUT IS NOT LIMITED TO THE FOLLOWING EXTENT OF WORK:

- INTERNAL AND EXTERNAL LIGHTING.
- EMERGENCY AND EXIT LIGHTING.
- EARTHING OF THE LIGHTING INSTALLATION.
- LIGHTING CONTROL.
- INTERFACE THE INTERNAL LIGHTING TO THE SECURITY SYSTEM SUCH THAT WHEN THE SECURITY SYSTEM IS ARMED THE INTERNAL LIGHTS ARE DISABLED / OFF.
- LIGHTING SUBCIRCUITS.
- TESTING AND COMMISSIONING.

PROVIDE A SINGLE POINT EMERGENCY LIGHTING SYSTEM THAT COMPLIES WITH THE LATEST ISSUE OF ALL PARTS AS2293 AND THE RELEVANT PARTS OF THE NCC BCA. INSTALL EMERGENCY LIGHT FITTINGS NOMINATED AS MAINTAINED WITH THE LAMP PERMANENTLY ON SUPPLIED VIA AN UNSWITCHED ACTIVE MAINS SUPPLY WHEN THE MAINS SUPPLY IS AVAILABLE. WHEN THE MAINS SUPPLY IS NOT AVAILABLE, THE LAMP IS TO REMAIN ON SUPPLIED BY THE EMERGENCY PACK. SINGLE LAMP MAINTAINED EMERGENCY LIGHTS ARE NOT SWITCHED WITH THE LOCAL GENERAL AREA LIGHTING. (THE LAMP IS ALWAYS ON.)

INSTALL EMERGENCY LIGHT FITTINGS NOMINATED AS NON-MAINTAINED AS FOLLOWS:

- IF THE FITTING IS NOT BEING SWITCHED, THE LAMP IS TO REMAIN OFF WHEN THE MAINS SUPPLY IS AVAILABLE. WHEN THE MAINS SUPPLY IS NOT AVAILABLE THE LAMP IS TO BE SWITCHED ON SUPPLIED BY THE EMERGENCY PACK. UNSWITCHED SINGLE LAMP NON-MAINTAINED EMERGENCY LIGHTS ARE NOT SWITCHED WITH THE LOCAL GENERAL AREA LIGHTING. (THE LAMP IS ON ONLY WHEN THE MAINS SUPPLY IS NOT AVAILABLE.)
- IF THE FITTING IS BEING SWITCHED, THE LAMP IS TO BE SUPPLIED AND CONTROLLED WITH THE LOCAL GENERAL AREA LIGHTING WHEN THE MAINS SUPPLY IS AVAILABLE. WHEN THE MAINS SUPPLY IS NOT AVAILABLE THE LAMP IS TO BE SWITCHED ON, SUPPLIED BY THE EMERGENCY PACK. (THE LAMP IS ON WHEN TURNED ON WITH THE LOCAL GENERAL LIGHTING OR THE MAIN SUPPLY IS NOT AVAILABLE.)

INSTALL EMERGENCY LIGHTS SUCH THAT THE STATUS INDICATOR L.E.D. IS CLEARLY VISIBLE AND THE TEST BUTTONS ARE READILY ACCESSIBLE. LABEL EACH CIRCUIT BREAKER WHICH CONTROLS THE UNSWITCHED ACTIVE TO EXIT LIGHTS WITH A LABEL FIXED ADJACENT; ENGRAVED PLASTIC LAMINATE, GREEN BACKGROUND WITH WHITE CHARACTERS: -

WARNING
INTERRUPTING SUPPLY WILL DISCHARGE
EMERGENCY LIGHTING BATTERIES

PROVIDE WRITTEN EVIDENCE OF THE INITIAL COMMISSIONING AND TESTING AND TESTING FOR THE DURATION OF THE MAINTENANCE PERIOD IN ACCORDANCE WITH AS 2293.2.

PROVIDE MAINTENANCE OF THE EMERGENCY AND EXIT LIGHTING INSTALLATION INCLUDING RECORDS IN ACCORDANCE WITH THE LATEST ISSUE OF ALL PARTS AS2293 AND THE RELEVANT PARTS OF THE NCC BCA.

9. COMMUNICATIONS CABLING

THE COMMUNICATIONS CABLING COMPONENT OF THIS CONTRACT INCLUDES A NEW COMMUNICATION RACK CR-21, OPTICAL FIBRE CABLING AS WELL AS CAT 6A STP OUTLETS, CAT 6 UTP OUTLETS AND CAT 6 PLUGS FOR VAPE SENSORS AND CCTV CAMERAS.

PROVIDE DEDICATED CAT 6A STP PATCH PANELS IN CR-21 TO ACCOMMODATE THE CAT 6A OUTLETS, DEDICATED CAT 6 UTP PATCH PANELS IN CR-21 TO ACCOMMODATE THE CAT 6 OUTLETS AND VAPE SENSOR PORTS. PROVIDE DEDICATED CAT 6 UTP PATCH PANELS IN CR-21 TO ACCOMMODATE THE CAT 6 CCTV CAMERA PORTS.

PROVIDE 12 CORE OSI GEL FILLED UNDERGROUND LC TERMINATED OPTICAL FIBRE CABLE FROM THE NEW COMMUNICATIONS RACK CR-21 TO THE FOLLOWING EXISTING COMMUNICATIONS RACKS UTILISING THE EXISTING UNDERGROUND PIT AND CONDUIT SYSTEM: UPGRADE THE FIBOTS IN THE FOLLOWING RACKS AS REQUIRED TO ACCOMMODATE THE NEW CABLING:

- CR-H.
- CR-11.
- CR-23.
- CR-A.
- CR-ELC.

THE COMMUNICATIONS CABLING IS TO BE OF THE SAME EXISTING STRUCTURED CABLING SOLUTION USED IN BUILDING PIM23 AND BE PROVIDED WITH A MANUFACTURERS 15 YEAR WARRANTY.

THE COMMUNICATIONS CABLING COMPONENT OF THIS CONTRACT INCLUDES, BUT IS NOT LIMITED TO THE FOLLOWING EXTENT OF WORK:

- COMMUNICATIONS RACK CR-21.
- CAT 6A STP COMMUNICATIONS OUTLETS, CABLING AND PATCH PANELS.
- CAT 6 UTP COMMUNICATIONS OUTLETS, CABLING AND PATCH PANELS.
- CAT 6 UTP VAPE PLUGS, CABLING AND PATCH PANELS.
- CAT 6 UTP CCTV PLUGS, CABLING AND PATCH PANELS.
- FIBOT.
- OPTICAL FIBRE CABLES.
- LABELLING.
- CABLING, CABLE SUPPORT SYSTEMS AND ACCESS.
- TESTING AND COMMISSIONING.

THE PA EQUIPMENT IS TO BE MOUNTED IN THE TOP OF THE COMMUNICATIONS RACK CR-21.

ALL COMMUNICATIONS CABLING IS TO BE UNDERTAKEN BY AN ACMA LICENCE HOLDER. THE PATCH LEADS, FLY LEADS, UPS, VAPE SENSORS, CCTV CAMERAS AND ACTIVE COMMUNICATIONS EQUIPMENT WILL BE PROVIDED BY THE COLLEGE.

NOTES

10. PUBLIC ADDRESS SYSTEM

THE PUBLIC ADDRESS SYSTEM COMPONENT OF THIS CONTRACT INCLUDES MULTI TAP 100V SPEAKERS AND HORNS CABLED TO POWER AMPLIFIERS MOUNTED WITH IN THE TOP OF COMMUNICATIONS RACK CR-21. PROVIDE AMPLIFIERS CONFIGURED AS FOUR ZONES BEING EXTERNAL, GROUND LEVEL, FIRST FLOOR AND SECOND FLOOR. PRIOR TO PRACTICAL COMPLETION, PROVIDE A TEMPORARY MUSIC SOURCE TO AIM / BALANCE THE SPEAKERS AND HORNS ON SITE AS DIRECTED BY THE COLLEGE.

THE PUBLIC ADDRESS SYSTEM COMPONENT OF THIS CONTRACT INCLUDES BUT IS NOT LIMITED TO THE FOLLOWING:

- SPEAKERS AND HORNS.
- RACK MOUNTED AMPLIFIERS.
- CO-ORDINATION.
- TESTING, COMMISSIONING AND BALANCING.
- MAINTENANCE.
- AS CONSTRUCTED DOCUMENTS INCLUDING DRAWINGS DETAILING THE LOOP PATH OF EACH SPEAKER CABLE.
- CABLING, CABLE SUPPORT SYSTEMS AND ACCESS.
- ALL MINOR COMPONENTS AND INCIDENTAL WORKS NOT SPECIFICALLY REFERRED TO, HOWEVER NECESSARY TO COMPLETE THE PUBLIC ADDRESS SYSTEM INSTALLATION SUCH THAT IT IS HANDED OVER COMPLETE, OPERATIONAL AND FIT FOR THE INTENDED USE.

ALL PUBLIC ADDRESS SYSTEM WORKS MUST BE UNDERTAKEN BY AN ACMA LICENCE HOLDER. THE AUDIO / IP CONVERTERS, THE CONNECTION OF THE AMPLIFIERS TO THE AUDIO / IP CONVERTERS AND PATCH LEADS WILL BE PROVIDED BY THE COLLEGE.

11. FIRE ALARM

THE FIRE ALARM COMPONENT OF THIS CONTRACT INCLUDES A STANDALONE NON BRIGADE MONITORED FIRE ALARM SYSTEM WITH SPACE AND CAPACITY TO DOUBLE THE QUANTITY OF DETECTORS, SPEAKERS AND INTERFACES PROVIDED AS PART OF THE INITIAL CONSTRUCTION AS THE FIP WILL BE USED TO ACCOMMODATE THE FUTURE EXPANSION OF BUILDING 21.

THE FIRE ALARM COMPONENT OF THIS CONTRACT INCLUDES BUT IS NOT LIMITED TO THE FOLLOWING:

- THE PROVISION OF A STAND ALONE AS1670.1 2018 FIRE DETECTION AND ALARM SYSTEM.
- SUPPLY AND INSTALLATION OF ALL COMPONENTS FORMING PART OF THE FIRE ALARM SERVICES.
- CO-ORDINATION.
- INSPECTIONS.
- LOG BOOK.
- TESTING AND COMMISSIONING.
- MAINTENANCE.
- AS CONSTRUCTED DOCUMENTS INCLUDING DRAWINGS DETAILING THE LOOP PATH AND EACH COMPONENT ADDRESS.
- OPERATION AND MAINTENANCE MANUAL.
- CABLING, CABLE SUPPORT SYSTEMS AND ACCESS.
- FIP INCORPORATING THE FDCIE AND EWCIE.
- SYSTEM INTERFACE DIAGRAM.
- MANUAL CALL POINT ON THE FDCIE.
- DETECTORS.
- SPEAKERS AND HORNS.
- INTERFACE TO THE SECURITY SYSTEM.
- DOOR HOLDERS AND DOOR RELEASE PUSH BUTTONS.
- ALL MINOR COMPONENTS AND INCIDENTAL WORKS NOT SPECIFICALLY REFERRED TO, HOWEVER NECESSARY TO COMPLETE THE FIRE ALARM SYSTEM INSTALLATION SUCH THAT IT IS HANDED OVER COMPLETE, OPERATIONAL AND FIT FOR THE INTENDED USE.

ALL COMPONENTS PROVIDED AS PART OF THE FIRE ALARM SYSTEM MUST BE GENERIC IN THAT THEY CAN BE EXPANDED UPON AND MAINTAINED BY ANY CONTRACTOR WHO HOLDS THE REQUIRED QBCC AND FIRE PROTECTION CONTRACTORS REGISTRATION BOARD OF QUEENSLAND INC REGISTRATIONS. ALL SUCH COMPONENTS MUST NOT BE LOCKED INTO A SINGLE MANUFACTURER OR LIMITED BY A LICENSING AGREEMENT.

ALL COMPONENTS PROVIDED AS PART OF THE FIRE ALARM SYSTEM MUST BE LISTED ON THE CSIRO.AU/ACTIVEFIRE WEB SITE AND BE PROVIDED WITH A CURRENT CERTIFICATE OF CONFORMITY. INCLUDE A COPY OF EACH CERTIFICATE OF CONFORMITY IN THE MANUAL.

ENSURE ALL AS1670.1:2018 WORKS ARE UNDERTAKEN BY, OR UNDER THE DIRECTION OF A SUITABLY QUALIFIED AND EXPERIENCED FIRE ALARM SYSTEM INSTALLER WHO HOLD THE REQUIRED QBCC AND FIRE PROTECTION CONTRACTORS REGISTRATION BOARD OF QUEENSLAND INC REGISTRATIONS. INCLUDE A COPY OF ALL THE ABOVE REGISTRATIONS AND LICENCES IN THE MANUAL

PRIOR TO PRACTICAL COMPLETION CERTIFY THE INSTALLATION ON A FORM 12 AS COMPLYING WITH THE RELEVANT CODES AND STANDARDS AND INCLUDE A COPY OF THE CERTIFICATION IN THE MANUAL.

IN ADDITION TO THE DETECTORS DETAILED ON THE DRAWINGS, ALLOW FOR THE FOLLOWING PROVISIONAL ADDITIONAL DETECTORS TO BE LOCATED ON SITE:

- 6 SMOKE DETECTORS.
- 2 THERMAL DETECTORS.
- 8 CONCEALED SPACE DETECTORS INCLUDING ACCESS BRACKETS.

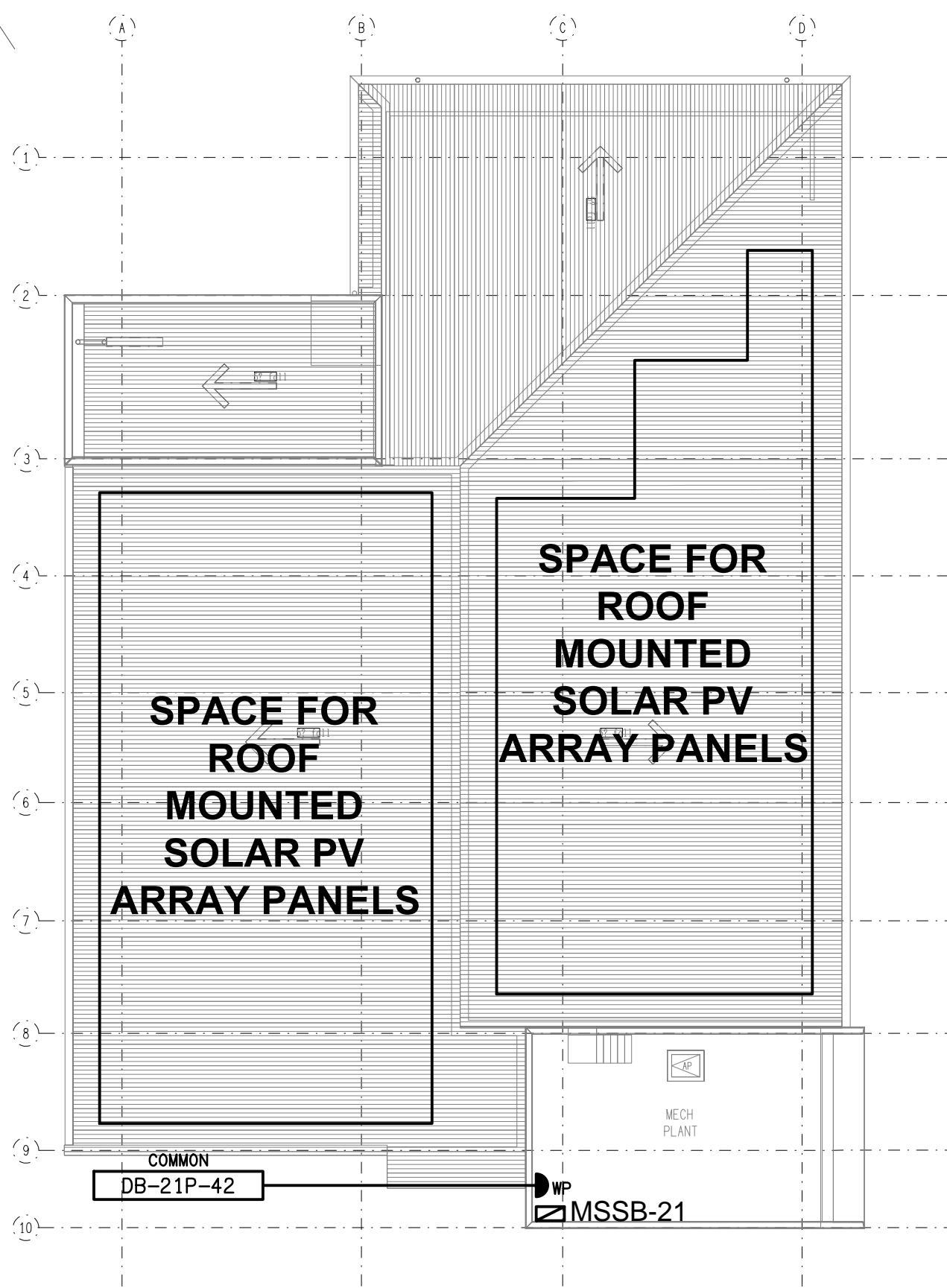
12. ABBREVIATIONS

A	-	AMP CURRENT RATING
AB	-	MOUNT ABOVE BENCH.
AFFL	-	ABOVE FINISHED FLOOR LEVEL.
BB	-	MOUNT BELOW BENCH.
BH	-	MOUNT ON BULKHEAD.
CEIL	-	MOUNT ON CEILING.
CS	-	MOUNT WITHIN CEILING SPACE.
C/W	-	COMPLETE WITH.
DW	-	DISHWASHER.
HP	-	HOT PLATE.
MCB	-	MINIATURE CIRCUIT BREAKER.
MCCB	-	MOUNDED CASE CIRCUIT BREAKER.
MSB	-	MAIN SWITCHBOARD.
MSSB	-	MECHANICAL SERVICES SWITCHBOARD.
MW	-	MICROWAVE.
N	-	NEON / LED INDICATOR WHEN ON.
NTS	-	NOT TO SCALE.
OV	-	OVEN.
RCBO	-	CIRCUIT PROTECTED VIA A 30mA RESIDUAL DEVICE INTEGRAL TO THE CIRCUIT BREAKER.
CURRENT	-	
REF	-	REFRIGERATOR.
SW	-	SURFACE MOUNTED.
UNO	-	UNLESS NOTED OTHERWISE.
WP	-	WEATHERPROOF TO IP56 UNO.
500	-	NUMBER DENOTES MOUNTING HEIGHT AFFL.

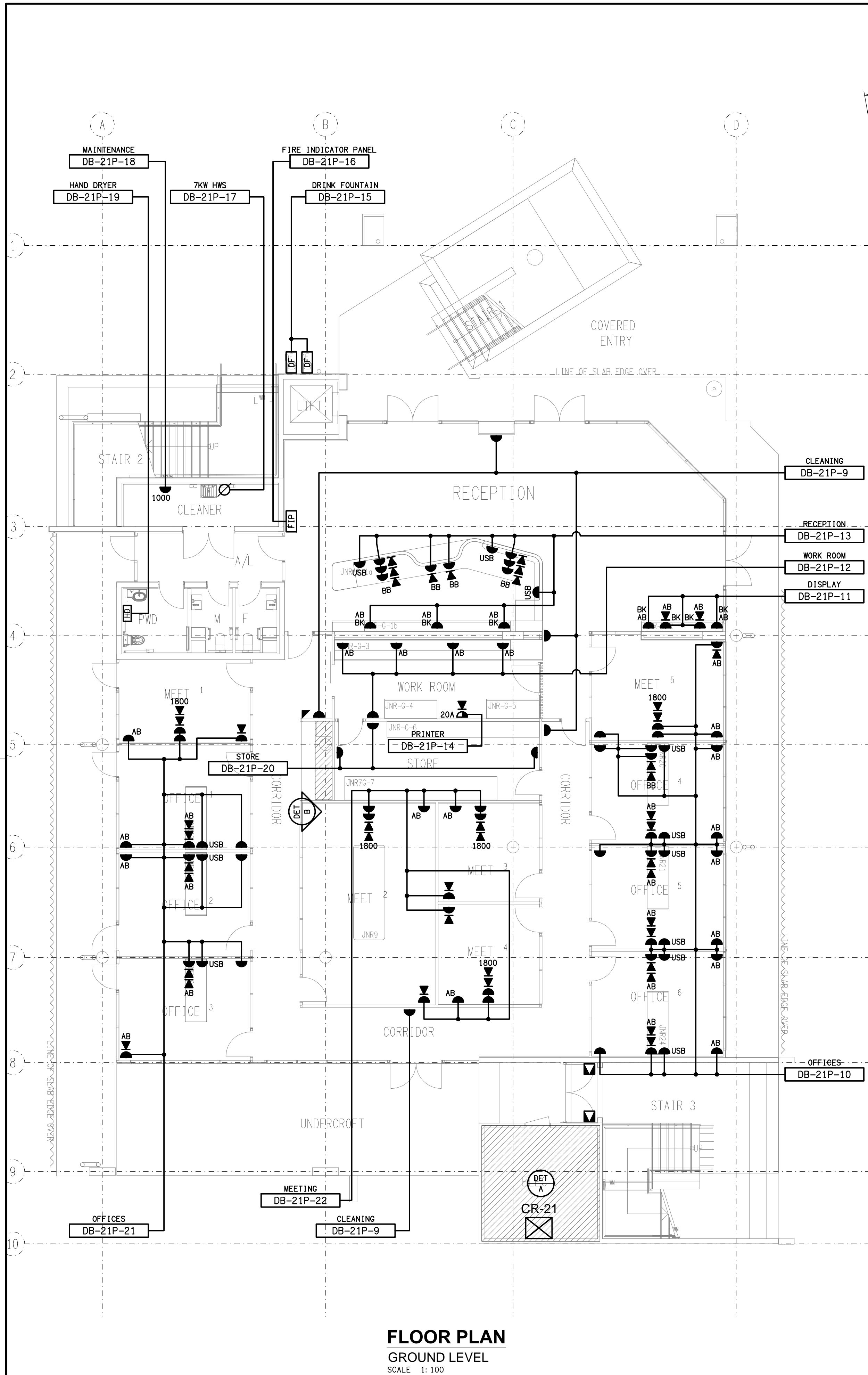
ELECTRICAL DESIGN GROUP BRISBANE PTY LTD ACN 092 710 793		THE COPYRIGHT OF THIS DRAWING REMAINS THE PROPERTY OF THE ELECTRICAL DESIGN GROUP.		PROJECT: KINGS CHRISTIAN COLLEGE PIMPAMA SENIOR SCHOOL ADMINISTRATION - PIM21		B TENDER 16/02/2026	
TRADING AS: ELECTRICAL DESIGN GROUP		USE FIGURED DIMENSIONS IN PREFERENCE TO SCALE.		DRAWING: ELECTRICAL SERVICES NOTES		REV: DESCRIPTION: DATE:	
		ALL DIMENSIONS TO BE VERIFIED ONSITE.		BRISBANE GOLD COAST		SCALE: NOT TO SCALE AT A1	
				198 PIMPAMA JACOBS WELL ROAD, PIMPAMA, QUEENSLAND		PROJECT NO: C3475a	
						DRAWING NO: E02	
						REVISION: B	



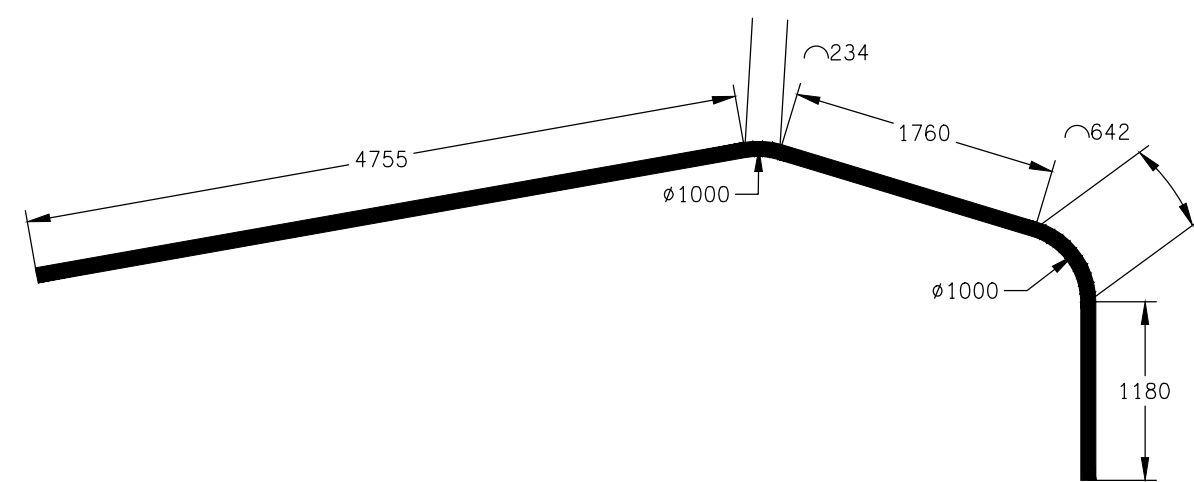
<div>ELECTRICAL DESIGN GROUP BRISBANE PTY LTD ACN 092 710 793</div>	<div>THE COPYRIGHT OF THIS DRAWING REMAINS THE PROPERTY OF THE ELECTRICAL DESIGN GROUP.</div>	<div>ELECTRICAL DESIGN GROUP ELECTRICAL BUILDING SERVICES CONSULTANTS BRISBANE GOLD COAST</div>	<div>PROJECT: KINGS CHRISTIAN COLLEGE PIMPAMA SENIOR SCHOOL ADMINISTRATION - PIM21</div>	<div>DRAWING: ELECTRICAL SERVICES SCHEMATICS</div>	<div>SCALE: NOT TO SCALE AT A1</div>	PROJECT NO:	DRAWING NO:	REVISION:		
	<div>USE FIGURED DIMENSIONS IN PREFERENCE TO SCALE.</div>					<div>ALL DIMENSIONS TO BE VERIFIED ONSITE.</div>	<div>198 PIMPAMA JACOBS WELL ROAD, PIMPAMA, QUEENSLAND</div>	<div>C3475a</div>	<div>E03</div>	<div>B</div>



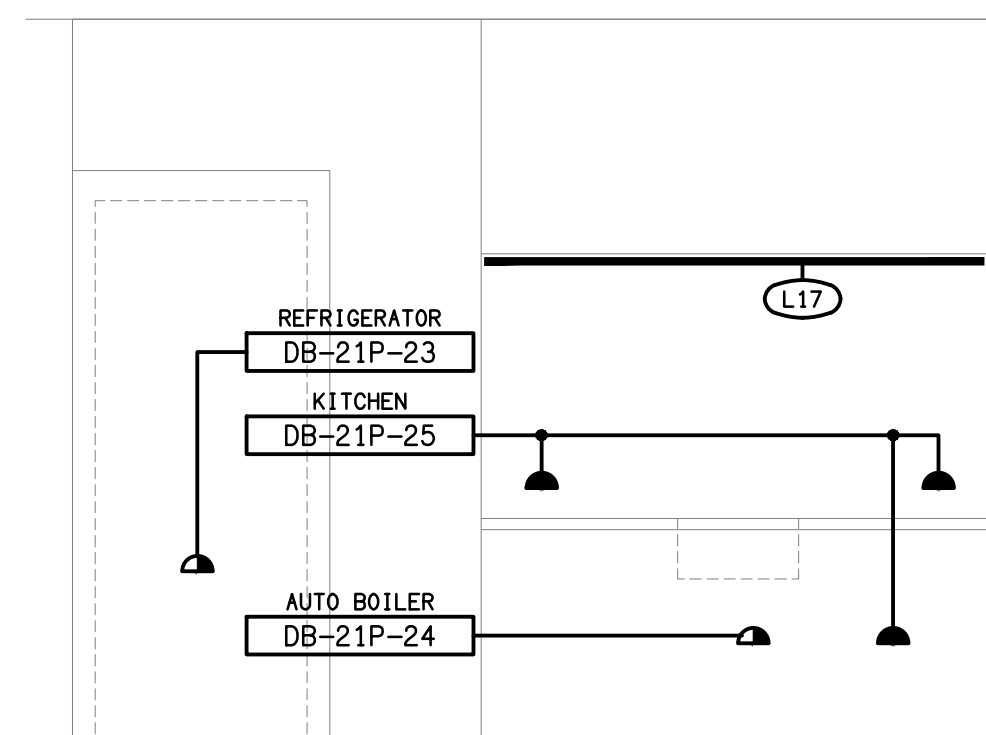
SCALE: 1:500 UNO	AT A1	PROJECT NO: C3475a	DRAWING NO: E04	REVISION: B
---------------------	-------	------------------------------	---------------------------	-----------------------



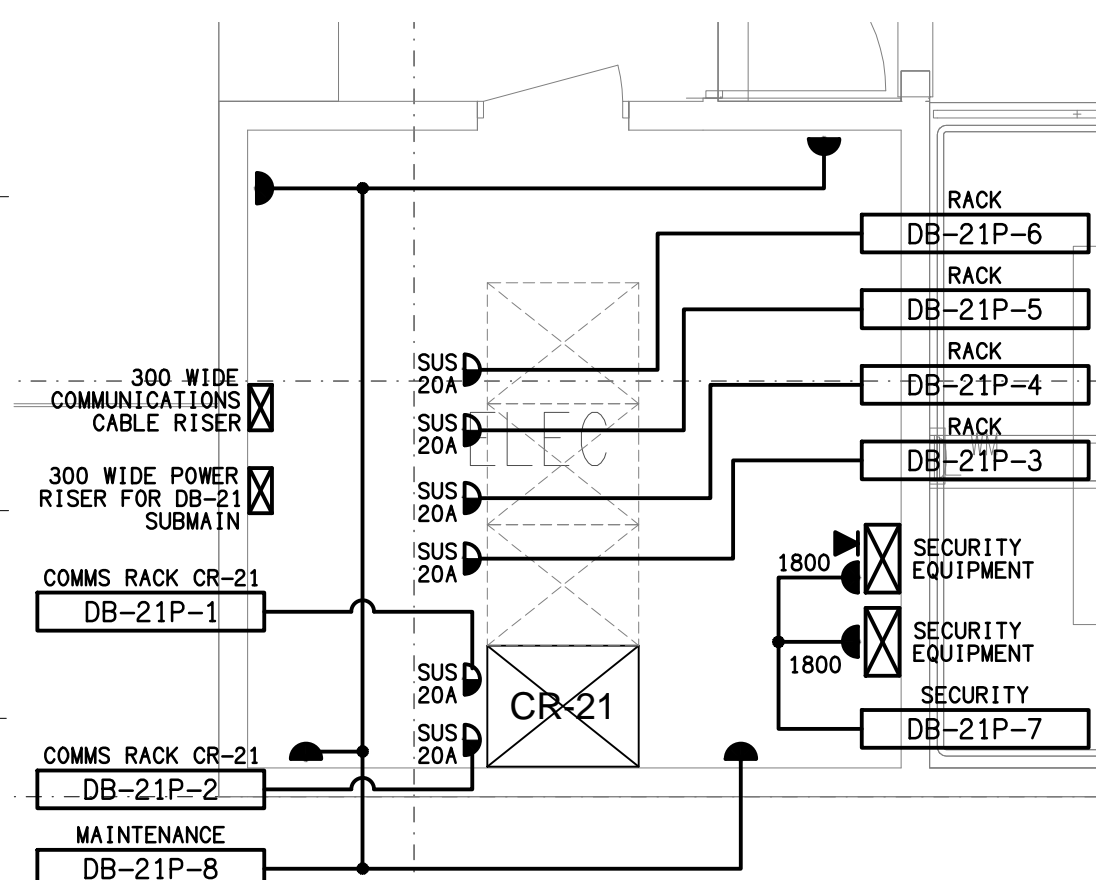
FLOOR PLAN
GROUND LEVEL
SCALE 1:100



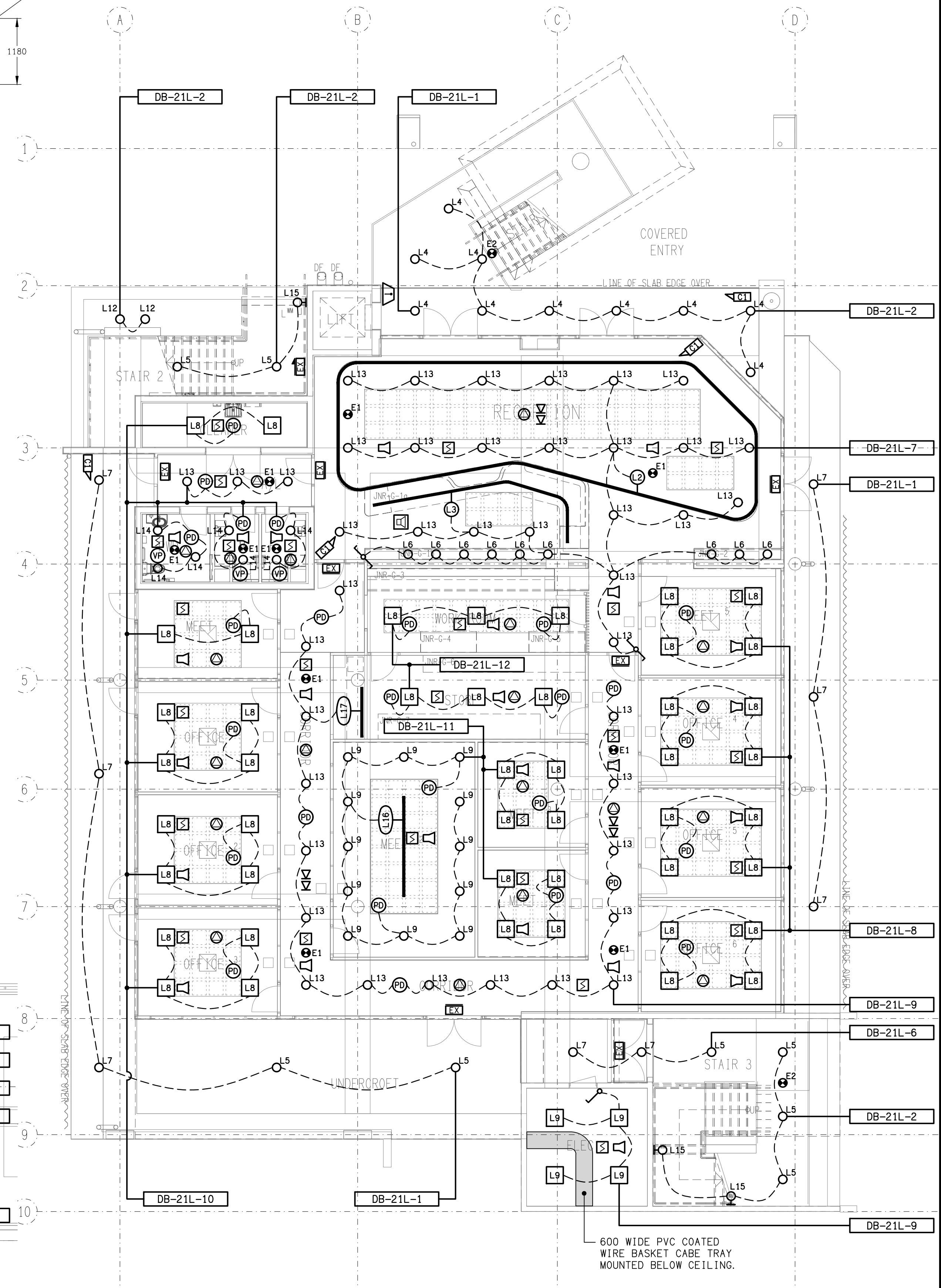
DETAIL C
L3 LIGHT FITTING DIMENSIONS
SCALE 1:50



DETAIL B
KITCHENETTE ELEVATION
SCALE 1:25



DETAIL A
GROUND LEVEL ELECTRICAL ROOM
SCALE 1:50



REFLECTED CEILING PLAN
GROUND LEVEL
SCALE 1:100

ELECTRICAL DESIGN GROUP BRISBANE
PTY LTD
ACN 092 710 793
TRADING AS:
ELECTRICAL DESIGN GROUP

THE COPYRIGHT OF THIS DRAWING
REMAINS THE PROPERTY OF THE
ELECTRICAL DESIGN GROUP.
USE FIGURED DIMENSIONS
IN PREFERENCE TO SCALE.
ALL DIMENSIONS TO BE
VERIFIED ONSITE.

ELECTRICAL DESIGN GROUP
ELECTRICAL BUILDING SERVICES CONSULTANTS
BRISBANE GOLD COAST

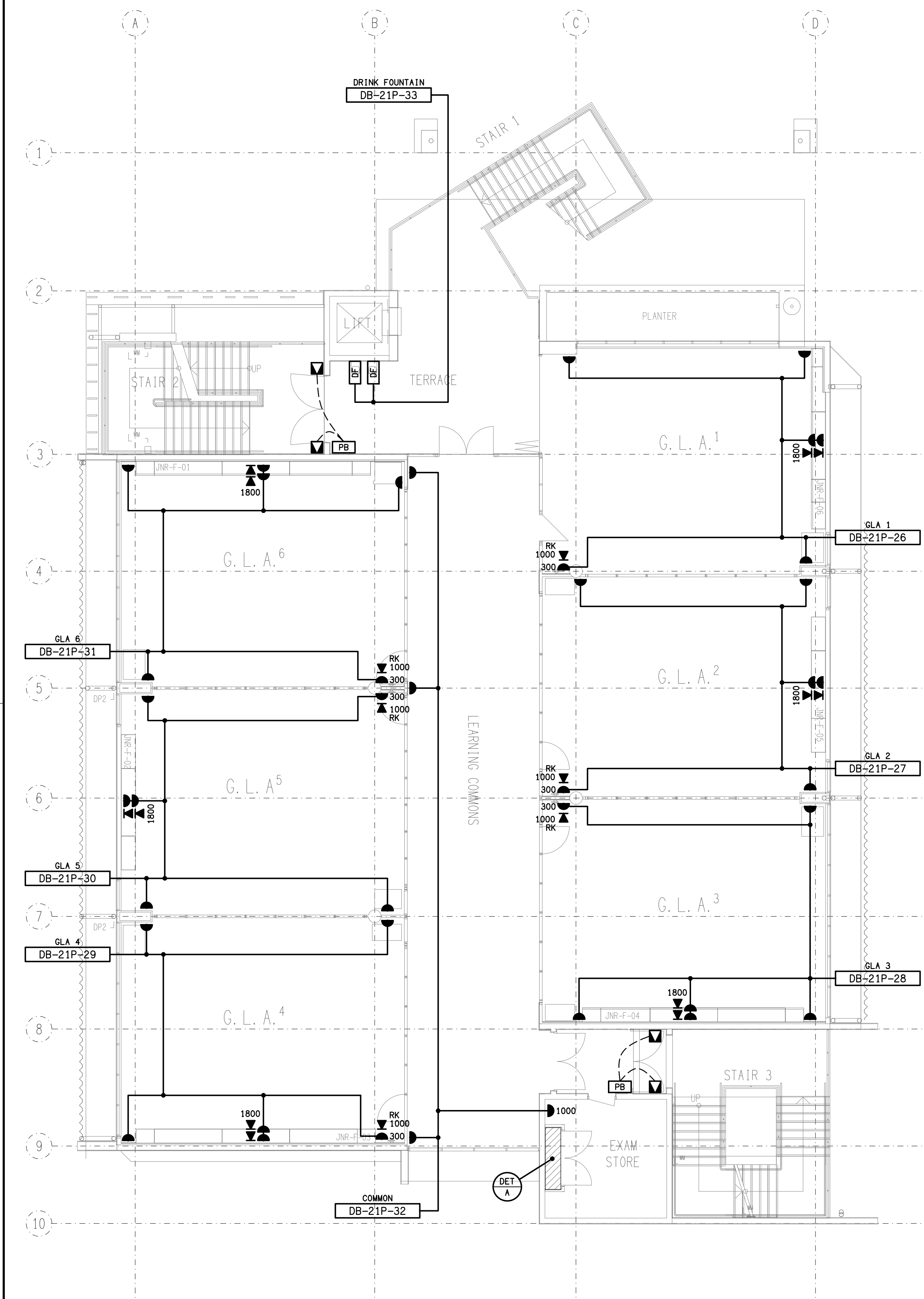
P.O. Box 15, Sherwood Q.4075
Phone: (07) 3278 4375
Email: brisbane@edg.net.au
Web: www.edg.net.au

PROJECT:
**KINGS CHRISTIAN COLLEGE PIMPAMA
SENIOR SCHOOL ADMINISTRATION - PIM21**

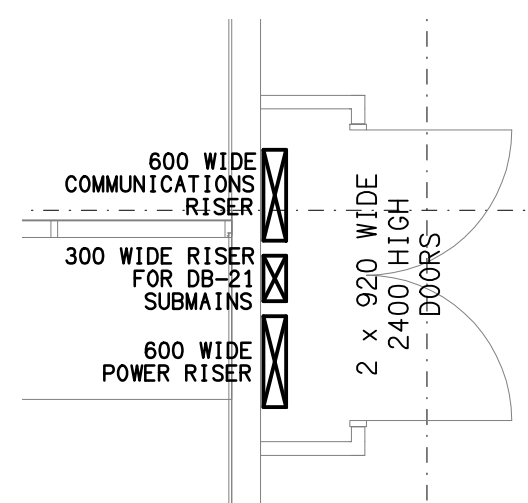
198 PIMPAMA JACOBS WELL ROAD, PIMPAMA, QUEENSLAND

B	TENDER	16/02/2026
REV:	DESCRIPTION:	DATE:

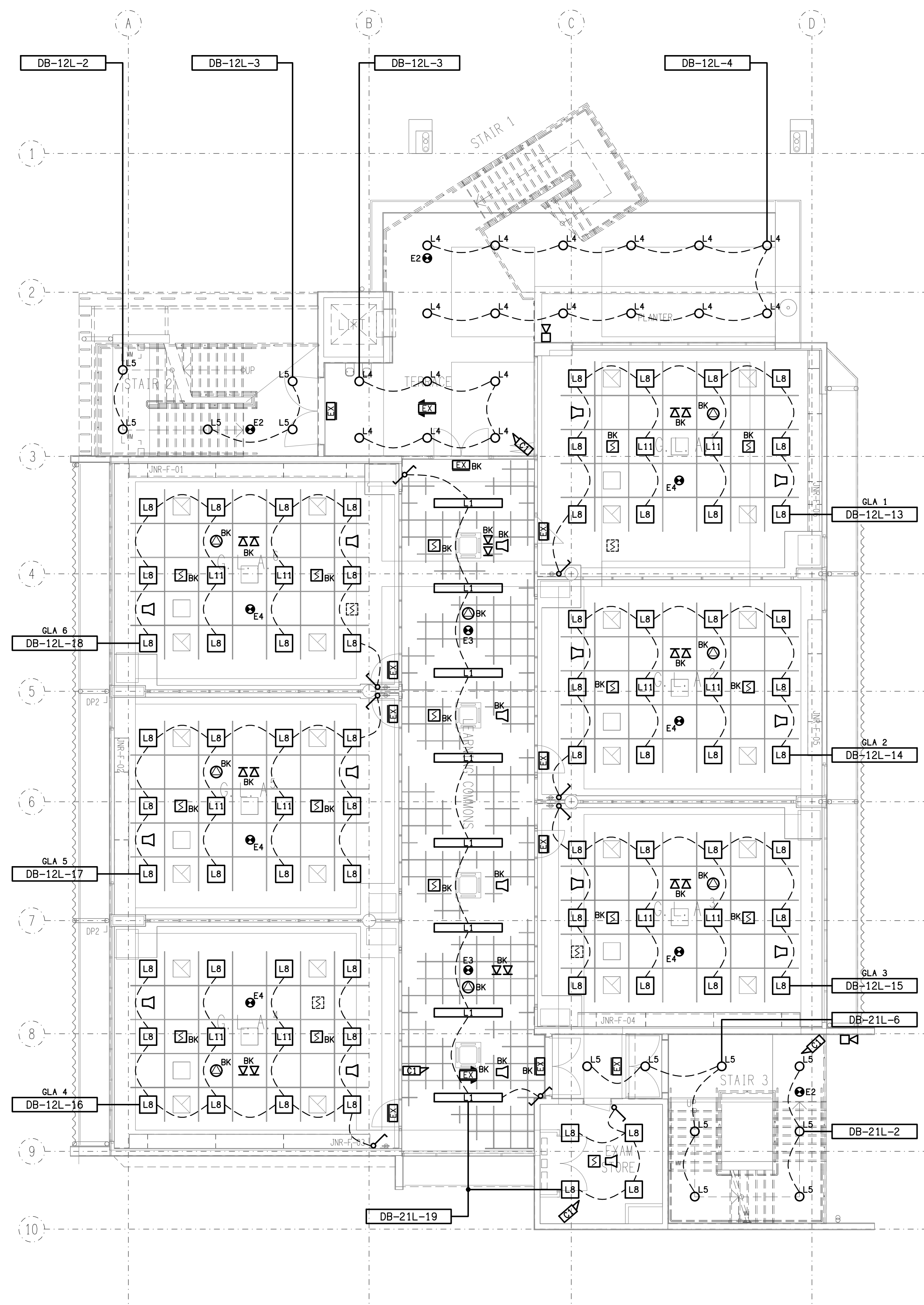
DRAWING: ELECTRICAL SERVICES GROUND LEVEL FLOOR PLAN & REFLECTED CEILING PLAN			
SCALE: 1:100 UNO	PROJECT NO: AT A1	DRAWING NO: C3475a E05	REVISION: B



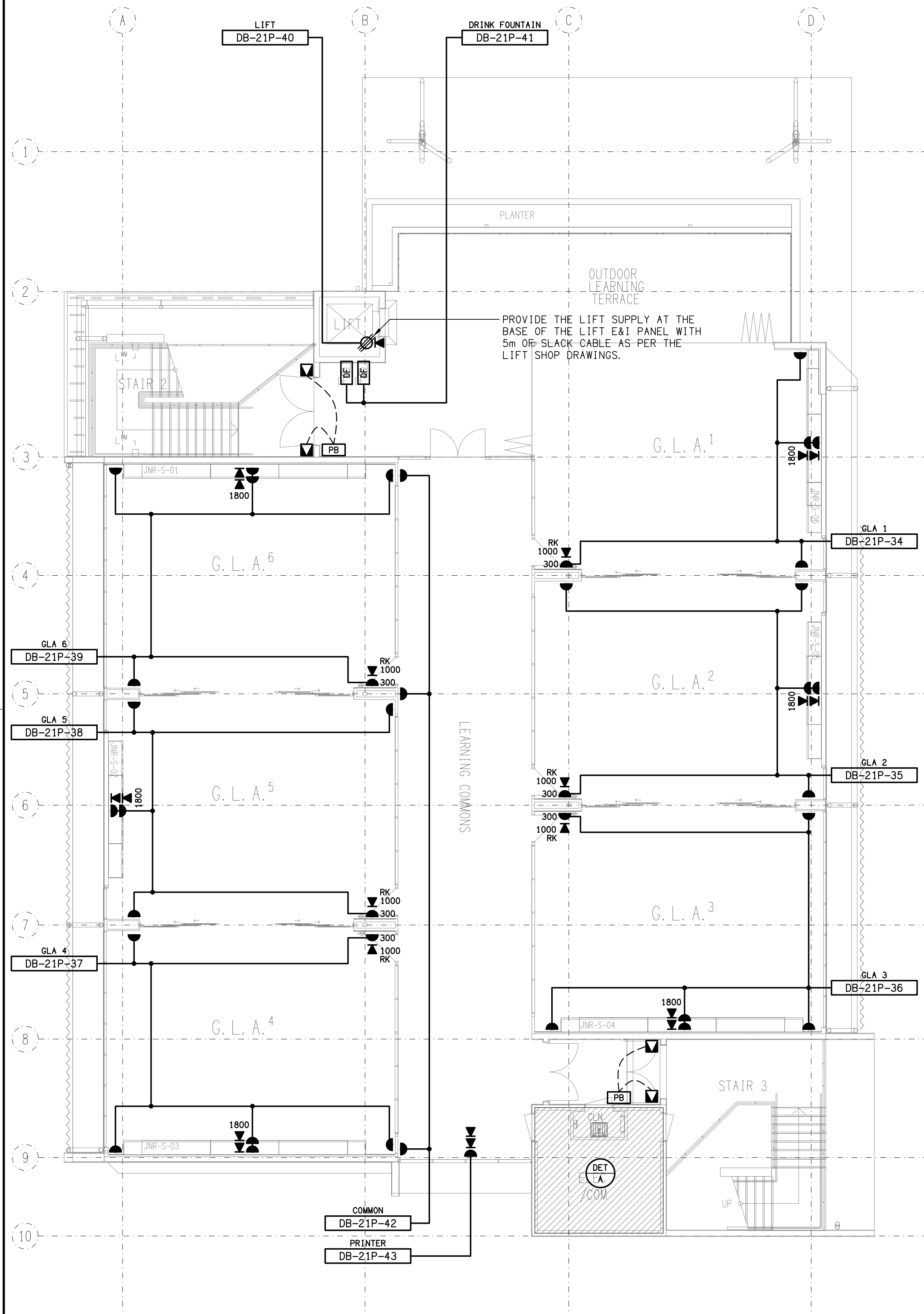
FLOOR PLAN
LEVEL 1
SCALE 1: 100



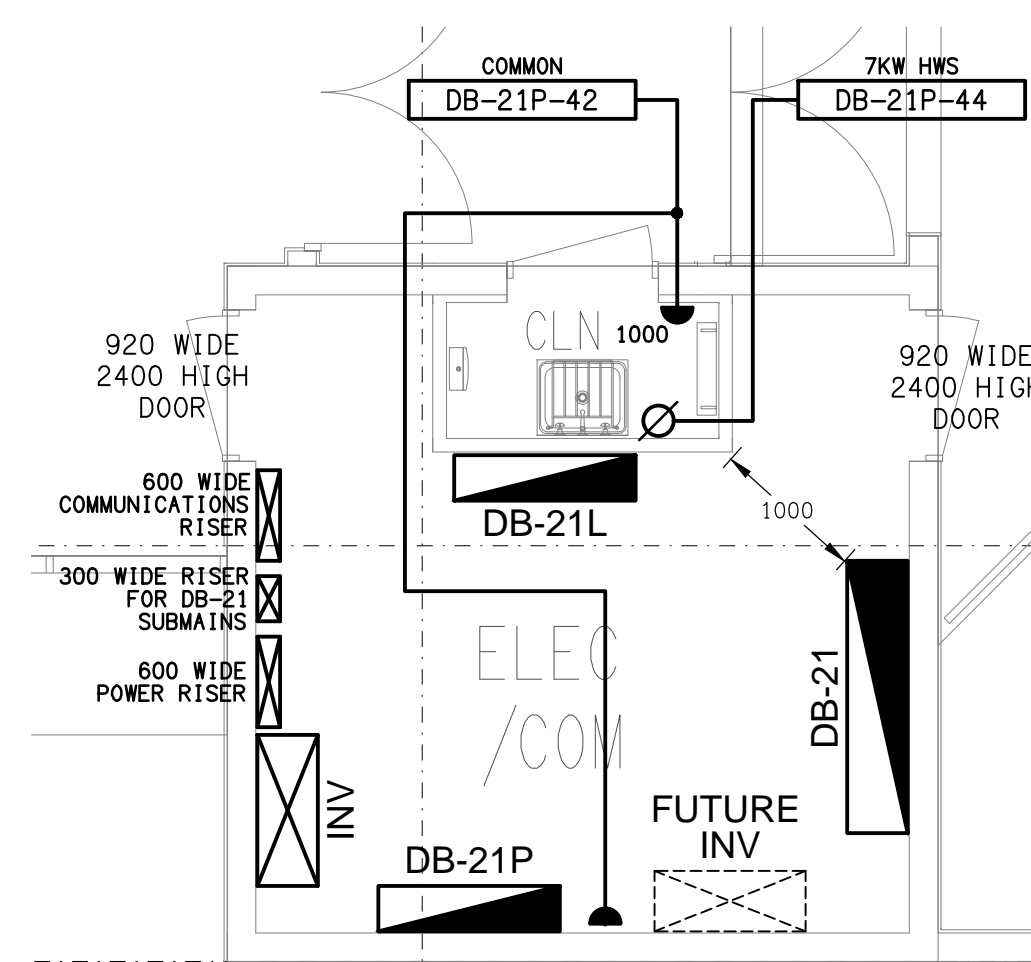
DETAIL A
LEVEL 1 ELECTRICAL RISER CUPBOARD
SCALE 1: 50



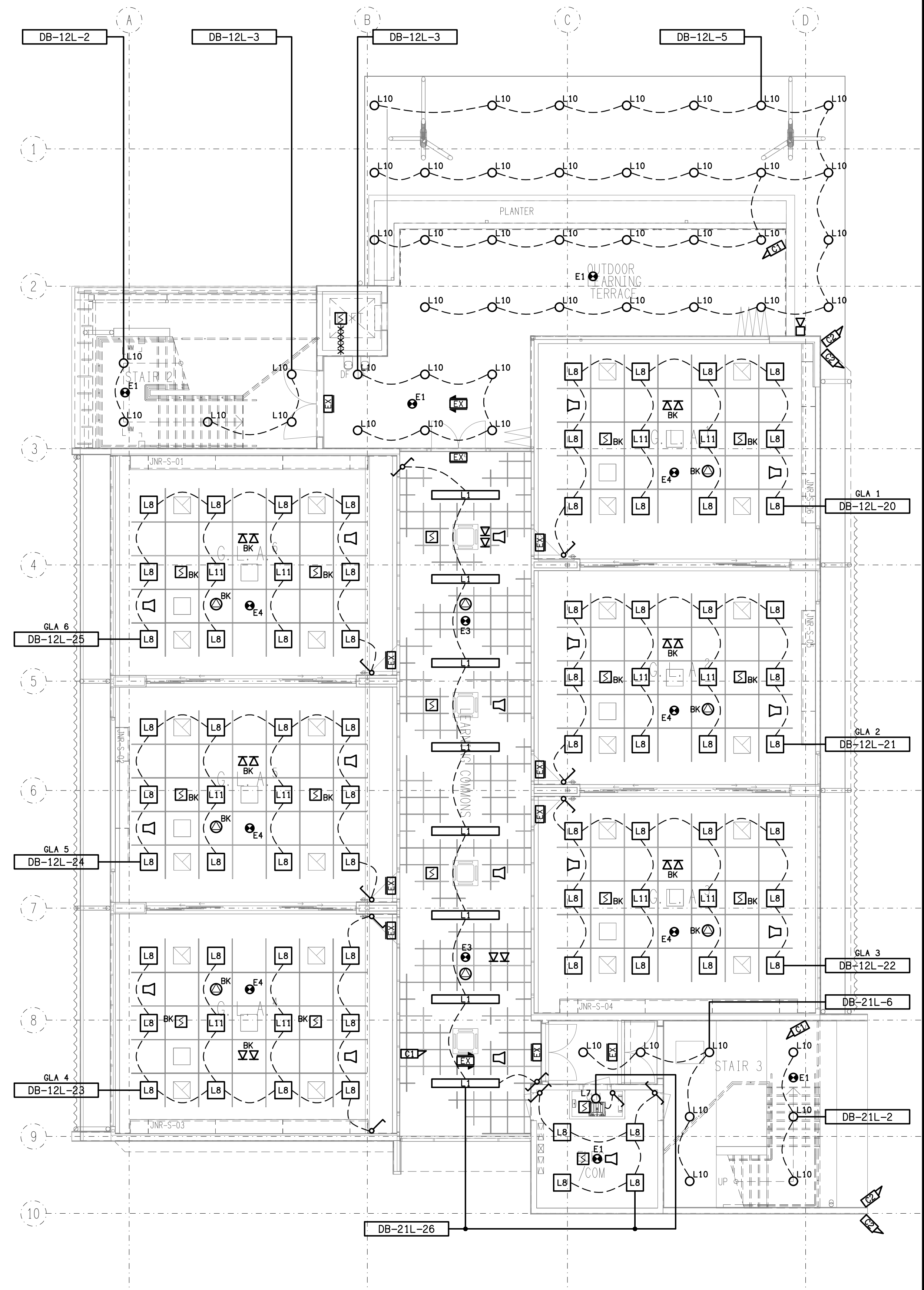
REFLECTED CEILING PLAN
LEVEL 1
SCALE 1: 100



FLOOR PLAN
LEVEL 2
SCALE 1:100



DETAIL A
LEVEL 2 ELECTRICAL ROOM
SCALE 1:50



REFLECTED CEILING PLAN
LEVEL 2
SCALE 1:100

ELECTRICAL DESIGN GROUP BRISBANE
PTY LTD
ACN 092 710 793
TRADING AS:
ELECTRICAL DESIGN GROUP

THE COPYRIGHT OF THIS DRAWING
REMAINS THE PROPERTY OF THE
ELECTRICAL DESIGN GROUP.
USE FIGURED DIMENSIONS
IN PREFERENCE TO SCALE.
ALL DIMENSIONS TO BE
VERIFIED ONSITE.

ELECTRICAL DESIGN GROUP
ELECTRICAL BUILDING SERVICES CONSULTANTS
BRISBANE GOLD COAST

P.O. Box 15, Sherwood Q. 4075
Phone: (07) 3278 4375
Email: brisbane@edg.net.au
Web: www.edg.net.au

PROJECT:
**KINGS CHRISTIAN COLLEGE PIMPAMA
SENIOR SCHOOL ADMINISTRATION - PIM21**

198 PIMPAMA JACOBS WELL ROAD, PIMPAMA, QUEENSLAND

B	TENDER	16/02/2026
REV:	DESCRIPTION:	DATE:

DRAWING: ELECTRICAL SERVICES LEVEL 2 FLOOR PLAN & REFLECTED CEILING PLAN			
SCALE: 1:100 UNO	AT A1	PROJECT NO: C3475a	DRAWING NO: E07
		REVISION: B	

LEGEND

- ES1

ACCESS CONTROL CONVENTIONAL ELECTRIC STRIKE.
- ES2

ACCESS CONTROL CONVENTIONAL ELECTRIC STRIKE C/W POWER TRANSFER HINGE.
- CR

ACCESS CONTROL CARD READER.
- CC1

CEILING MOUNTED CCTV CAMERA. CAT 6 UTP CABLE AND PLUG BY THE ELECTRICAL SUB CONTRACTOR.
- CC2

WALL MOUNTED CCTV CAMERA. CAT 6 UTP CABLE AND PLUG BY THE ELECTRICAL SUB CONTRACTOR.
- PI

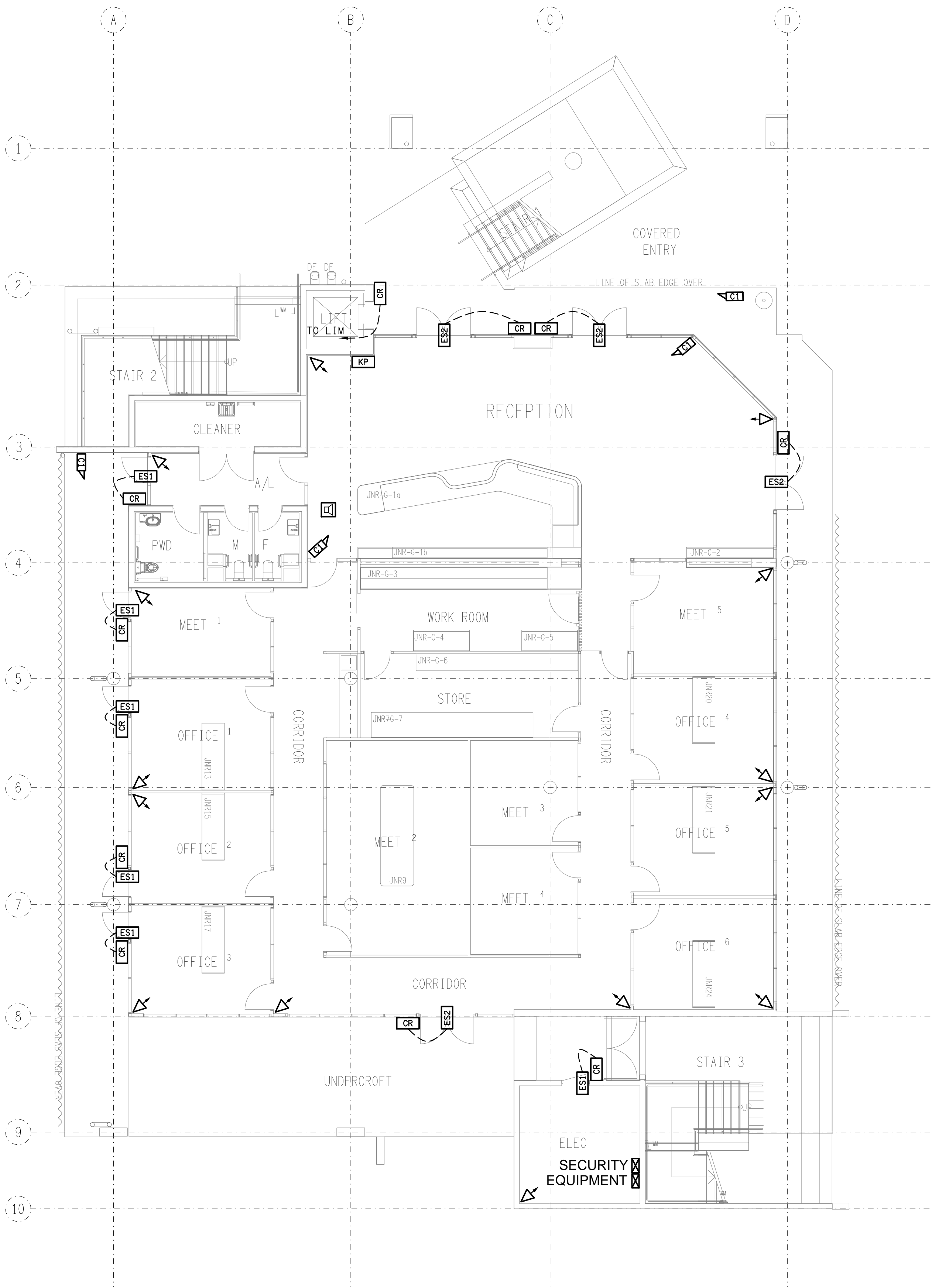
SECURITY PIEZO SIREN.
- DS

SECURITY DIRECTIONAL MOTION SENSOR.
- LIM

LIFT INTERFACE MODULE.
- KP

ARMING / DISARMING KEY PANEL.
- SE

SECURITY EQUIPMENT.



ELECTRICAL DESIGN GROUP BRISBANE
PTY LTD
ACN 092 710 793
TRADING AS:
ELECTRICAL DESIGN GROUP

THE COPYRIGHT OF THIS DRAWING
REMAINS THE PROPERTY OF THE
ELECTRICAL DESIGN GROUP.
USE FIGURED DIMENSIONS
IN PREFERENCE TO SCALE.
ALL DIMENSIONS TO BE
VERIFIED ONSITE.

ELECTRICAL DESIGN GROUP
ELECTRICAL BUILDING SERVICES CONSULTANTS
BRISBANE GOLD COAST

P.O.Box 15, Sherwood Q.4075
Phone: (07) 3278 4375
Email: brisbane@edg.net.au
Web: www.edg.net.au

PROJECT:
**KINGS CHRISTIAN COLLEGE PIMPAMA
SENIOR SCHOOL ADMINISTRATION - PIM21**

198 PIMPAMA JACOBS WELL ROAD, PIMPAMA, QUEENSLAND

A	TENDER	16/02/2026
REV:	DESCRIPTION:	DATE:

DRAWING: ELECTRICAL SERVICES SECURITY LEGEND & GROUND LEVEL PLAN	PROJECT NO: C3475a	DRAWING NO: S01	REVISION: A
SCALE: 1:100	AT A1		



SCALE: 1:100 UNO	AT A1	PROJECT NO: C3475a	DRAWING NO: S02	REVISION: A
---------------------	-------	------------------------------	---------------------------	-----------------------