



ELECTRICAL DESIGN GROUP

ELECTRICAL BUILDING SERVICES CONSULTANTS

P.O. Box 15, SHERWOOD Q. 4075

Phone: (07) 3278 4375

Website: www.edg.net.au Email: brisbane@edg.net.au

C3117a - NISSAN - IPSWICH

C3117a-0001(C).xls

ELECTRICAL SERVICES CONTRACT DOCUMENT SCHEDULE

REVISION C - 20 OCTOBER 2023

ISSUING INFORMATION				DATE OF ISSUE							
	DAY	17	18	20							
	MONTH	10	10	10							
	YEAR	23	23	23							
REASON FOR ISSUE				T	T	T					
A = APPROVAL				C = CONSTRUCTION				N = COORDINATION			
				P = PRELIMINARY				T = TENDER			

DISTRIBUTION				NUMBER OF COPIES							
WWW.EDG.NET.AU				1E	1E	1E					
WIM ARCHITECTS				1E	1E	1E					
P = PRINT				T = TRACING				D = DISC			
				E = EMAIL				F = FAX			

DOCUMENTS				REVISION							
C3117a-E01.dwg	LEGEND & DETAILS			A	B	C					
C3117a-E02.dwg	NOTES			A	B						
C3117a-E03.dwg	FLOOR PLAN			A	B	C					
C3117a-E04.dwg	REFLECTED CEILING PLAN			A	B	C					
C3117a-0001.xls	CONTRACT DOCUMENT SCHEDULE			A	B	C					

LEGEND

THE LIGHT FITTING SUPPLIER CONTACT DETAILS MAY BE AVAILABLE ON THE EDG WEBSITE VIA THE FOLLOWING LINK www.edg.net.au/Links/Lighting.htm

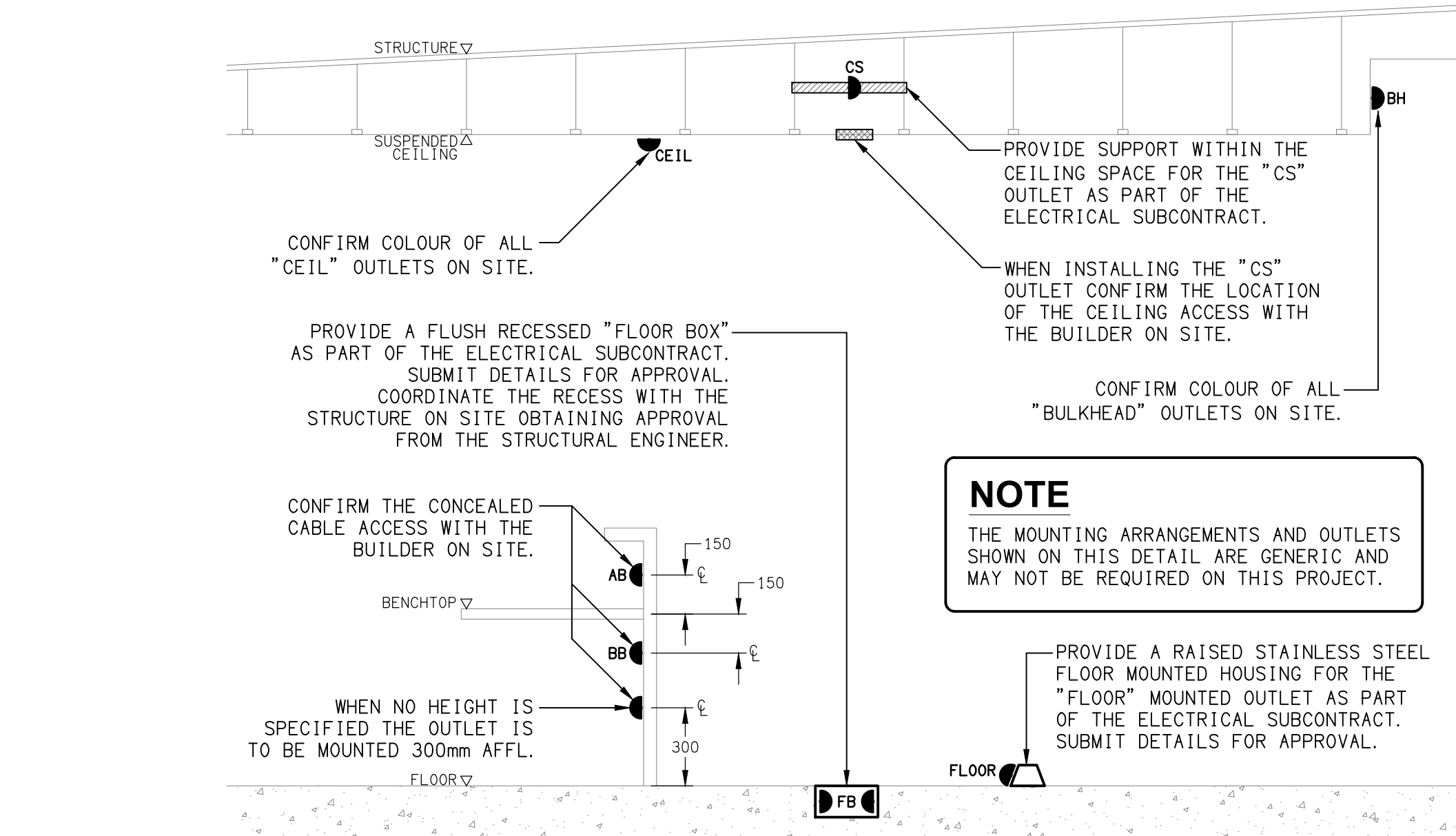
TYPE	LAMPS	DESCRIPTION	COLOUR / ACCESSORY	CATALOGUE No
C	4.4W 3000K LED	RECESSED 30 DIA DOWNLIGHT C/W REMOTE DRIVER	DULUX RAL 9006 SILVER	FITTINGS TO BE PROVIDED AS PER THE NISSAN CONCEPT DESIGN BOOKLET.
H	37W 3000K LED	MAYNE PENDANT	DULUX RAL 9006 SILVER	
G	3000K LED	COVE LIGHT LED STRIP IN A ALUMINIUM EXTRUSION C/W OPAL DIFFUSER. MOUNT AS PER THE ARCHITECTURAL COVE DETAIL. REMOTE DRIVER	NATURAL	
D	30W 4000K LED	RECESSED 186 DIA ADJUSTABLE DOWNLIGHT C/W REMOTE DRIVER	DULUX P-6 CHARCOAL GREY	
ELS	4000K LED	ROD SUSPENDED LINEAR EXTRUSION C/W OPAL DIFFUSER DOWNWARD ONLY	DULUX P-1 LIGHT GREY	
E1	LED	EMERGENCY LIGHT: RECESSED NON-MAINTAINED EMERGENCY LIGHT C/W REMOTE BATTERY PACK	WHITE	STANILITE SF2LED
EX	LED	EXIT LIGHT SURFACE MOUNTED : MAINTAINED 24M VIEWING DISTANCE EXIT LIGHT C/W DIFFUSERS & DIRECTIONAL ARROWS AS SHOWN. MOUNT BETWEEN 2100mm & 2700mm AFFL IF THERE IS NO VERTICAL SURFACE TO MOUNT THE FITTING ON WITHIN THIS RANGE CONFIRM THE MOUNTING HEIGHT WITH THE ENGINEER.	WHITE	STANILITE PLQLED
L1	TAKE POSSESSION OF THE EXISTING RECESSED LED DOWNLIGHTS FROM THE CLIENT AND INSTALL AS THE L1 FITTINGS.			
L2	22W 4000K LED	RECESSED ADJUSTABLE 55DEG DOWNLIGHT C/W REMOTE DRIVER.	WHITE	EQUAL TO GAMMA ILLUMINATION SCOOP 1290-VWFL-4K-22W
L3	22W 4000K LED	RECESSED ADJUSTABLE 55DEG DOWNLIGHT C/W REMOTE DRIVER.	WHITE	EQUAL TO GAMMA ILLUMINATION SCOOP 1290-VWFL-4K-22W
L4	28W 4000K LED	RECESSED 35DEG DOWNLIGHT C/W REMOTE DRIVER.	WHITE	EQUAL TO GAMMA ILLUMINATION COBALT 1405-4K-28W
L5	22W 4000K LED	RECESSED 53DEG DOWNLIGHT C/W REMOTE DRIVER.	WHITE	EQUAL TO GAMMA ILLUMINATION COBALT 1403-4K-28W
LIGHTING CONTROL SWITCH PANEL (SP1)		SWITCH PANEL AS PER THE SP1 SCHEMATIC MOUNTED AT 1000mm AFFL UNLESS NOTED OTHERWISE. THE SP1 LOCATION IS TO BE CONFIRMED ON SITE BY THE CLIENT.	WHITE	CLIPSAL
ONE-WAY LIGHT SWITCH		ONE-WAY LIGHT SWITCH C/W CIRCUIT IDENTIFICATION ON THE FACEPLATE BEHIND THE SURROUND MOUNTED AT 1000mm AFFL UNLESS NOTED OTHERWISE. UTILISE ARCHITRAVE FACEPLATES WERE NECESSARY.	WHITE	CLIPSAL "C2000 SERIES" 30FLM15
SINGLE POWER OUTLET		SINGLE POWER OUTLET C/W CIRCUIT IDENTIFICATION ON THE FACEPLATE BEHIND THE SURROUND MOUNT AT 300mm AFFL U.N.O.	WHITE	CLIPSAL "C2000 SERIES"
DOUBLE POWER OUTLET		DOUBLE POWER OUTLET C/W CIRCUIT IDENTIFICATION ON THE FACEPLATE BEHIND THE SURROUND MOUNT AT 300mm AFFL U.N.O.	WHITE	CLIPSAL "C2000 SERIES"
DOUBLE POWER OUTLET		DOUBLE POWER OUTLET C/W DUAL USB A CHARGING PORTS AND CIRCUIT IDENTIFICATION ON THE FACEPLATE BEHIND THE SURROUND	WHITE	CLIPSAL "C2000 SERIES"
MSB / DB-1		EXISTING MAIN SWITCHBOARD INCORPORATING DISTRIBUTION BOARD DB-1. ALL REDUNDANT SWITCHGEAR IS TO BE REMOVED INCLUDING THE DB-2 SUPPLY. UTILISE THE EXISTING SPARE SHOWROOM AC 100 AMP MCCB TO SUPPLY DB-3. UPDATE THE SCHEDULE AND LABELS PRIOR TO PRACTICAL COMPLETION.		
DB-3		NEW DISTRIBUTION BOARD DN-3. REFER TO THE DB-3 SCHEDULE. ALL REDUNDANT SWITCHGEAR IS TO BE REMOVED. ALL NEW SWITCHGEAR IS TO MATCH THE EXISTING IN MANUFACTURER AND TYPE. UPDATE THE SCHEDULE PRIOR TO PRACTICAL COMPLETION.		
SINGLE-PHASE ISOLATOR		SINGLE-PHASE WEATHERPROOF ISOLATOR. MOUNT AT 1350mm AFFL U.N.O. RATING 20A U.N.O. CONNECT TO EQUIPMENT VIA FLEXIBLE CONDUIT.	-	CLIPSAL WHT20
SIGNAGE CONNECTION		COORDINATE THE LOCATION AND CONNECTION WITH THE SIGN CONTRACTOR ENSURING THE POWER OUTLET / ISOLATOR ARE PROVIDED WITH APPROPRIATE WEATHER PROTECTION AND ARE CONCEALED FROM VIEW.		
CS-A		PROVIDE THE CS-A OUTLET AS A 10 AMP PLUG BASE CONCEALED WITHIN THE CEILING SPACE TO BE USED TO SUPPLY THE SUSPENDED CEILING LIGHTS.		
FLOOR BOX 1 (FB1)		FLUSH RECESSED FLOOR BOX C/W TRAFFICABLE LID TWO DOUBLE GPOS AND FOUR COMMUNICATIONS OUTLETS.	STAINLESS STEEL	ELECTRIC CABLE DUCT SYSTEMS FB149HD
COMMUNICATIONS OUTLET		RJ45 CAT-6 COMMUNICATIONS OUTLET. CABLED BACK TO THE EXISTING COMMUNICATIONS RACK CR-A. VIA 4-PAIR CAT-6 UTP CABLE. MOUNT UP TO 3 RJ45 OUTLETS PER MULTI-GANG FACEPLATE WITH SEPARATE PERMANENT LABELLING FOR EACH OUTLET. MOUNT AT 300MM AFFL UNLESS NOTED OTHERWISE	WHITE	CLIPSAL "C2000 SERIES"
CR-A		EXISTING COMMUNICATIONS RACK TO BE UPGRADED WITH ADDITIONAL PATCH PANELS AS NECESSARY TO ACCOMMODATE THE NEW COMMUNICATIONS OUTLETS. REMOVE ALL EXISTING REDUNADANT CABLING AND UPDATE THE PORT LABLES TO REFLECT THE FINAL INSTALLATION.		
CR-B		EXISTING COMMUNICATIONS RACK TO REMAIN AS IS.		
SPEAKER		NISSAN RADIO RECESSED SPEAKER TO BE CABLED TO A NEW AMPLIFIER LOCATED IN CR-A. PROVIDE THE SPEAKERS AND AMPLIFIER AS PER THE NISSAN CONCEPT DESIGN BOOKLET.		

NOTE

ALL ELECTRICAL PENETRATIONS THROUGH THE ROOF SHEETING ARE TO BE IN LINE WITH THE STRUCTURAL OR MECHANICAL SERVICES PENETRATIONS TO AVOID DEDICATED FLASHINGS FOR THE ELECTRICAL SERVICES.

DB-3 DISTRIBUTION BOARD SCHEDULE

FAULT CURRENT: 6kA			MAIN SWITCH: 160A NON AUTO LOAD BREAK			
CHASSIS SIZE: 60 POLES			SUPPLIED FROM: MSSB			
CHASSIS RATING: 250A			SUPPLY CABLE: 4C 25			
PHASES: 3						
PROVIDE THE DB WITH A FULL WIDTH EMPTY DIN RAIL TO ACCOMMODATE FUTURE CONTACTORS AND CONTROLS. PROVIDE THE DB WITH AN AS2293 EMERGENCY LIGHTING CONTROL SYSTEM TO CONTROL THE ASSOCIATED TENANCY EMERGENCY LIGHTS. IN ADDITION TO THE CIRCUITS BELOW PROVIDE ALL NEW AS3000 COMPLIANT SWITCHGEAR TO SUPPLY ANY OF THE EXISTING CIRCUITS SUPPLIED FROM DB-2 THAT REMAIN.						
CIRC	PH	CIRCUIT	CONTROL	CABLE	LOCATION	CIRCUIT
		BREAKER (amps)	EQUIPMENT	SIZE (mm2)		USE
P1	1	20	RCBO	2.5	RECEPTION	GPOs
P2	1	20	RCBO	2.5	NISSAN	CLEANING
P3	1	20	RCBO	2.5	NISSAN	TV
P4	1	20	RCBO	2.5	NISSAN	SALES DESKS
P5	1	20	RCBO	2.5	NISSAN	CUSTOMER
P6	1	20	RCBO	2.5	NISSAN	OFFICE
P7	1	20	RCBO	2.5	CHERY SALES	GPOs
P8	1	20	RCBO	2.5	CHERY SALES	SALES DESKS
P9	1	20	RCBO	2.5	CUSTOMER KIT	GPOs
P10	1	20	RCBO	2.5	CUSTOMER KIT	AUTO BOILER
P11	3	40	RCBO	6.0	CUSTOMER KIT	HWS
P12	1	20	RCBO	2.5	CUSTOMER KIT	REF
P13	1	20	RCBO	2.5	ROOF	AC 1
P14	3	32	RCBO	6.0	ROOF	AC 2
P15	1	20	RCBO	2.5	ROOF	AC 3
L1	1	20	RCBO PE CELL ON DUSK OFF DAWN	2.5	EXTERNAL	CHERY SIGNAGE
L2	1	20	RCBO	2.5	NISSAN	LIGHTING
L3	1	20	RCBO PE CELL ON DUSK OFF DAWN	2.5	EXTERNAL	NISSAN SIGNAGE
L4	1	20	RCBO PE CELL ON DUSK OFF DAWN	2.5	EXTERNAL	NISSAN SIGNAGE
L5	1	20	RCBO	2.5	OFFICES	LIGHTING
L6	1	20	RCBO	2.5	PARTS	LIGHTING
L7	1	20	RCBO	2.5	PARTS	LIGHTING
L8	1	20	RCBO	2.5	CHERY	LIGHTING
L9	1	20	RCBO	2.5	CHERY	LIGHTING
L10	1	20	RCBO	2.5	CHERY	CS FEATURE
L11	1	20	RCBO	2.5	NISSAN	LIGHTING
L12	1	20	RCBO	2.5	NISSAN	LIGHTING
L13	1	20	RCBO	2.5	NISSAN	LIGHTING



DETAIL

TYPICAL OUTLET MOUNTINGS
NOT TO SCALE

EQUIPMENT:

TEST - TEST PUSH BUTTON MOUNTED ON THE DISTRIBUTION BOARD ESCUTCHEON.

RESET - RESET PUSH BUTTON MOUNTED ON THE DISTRIBUTION BOARD ESCUTCHEON.

LAMP - AMBER TEST INDICATING LAMP MOUNTED ON THE DISTRIBUTION BOARD ESCUTCHEON.

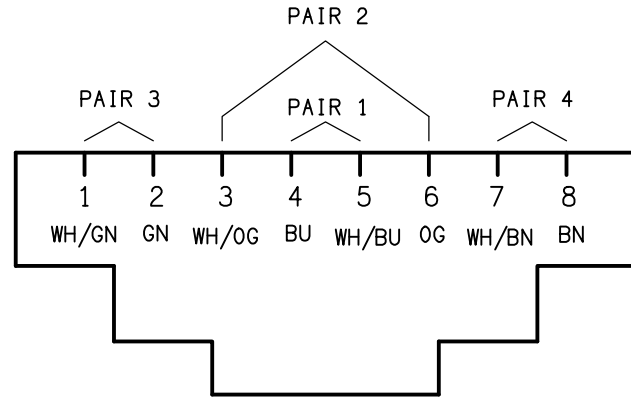
Ta - ADJUSTABLE 0-3 HOUR TIMED RELAY.

Tb - 15 MINUTE RUN-ON TIMER TO OPERATE UPON THE RETURN OF MAINS POWER.

Cx - CONTACTOR x.

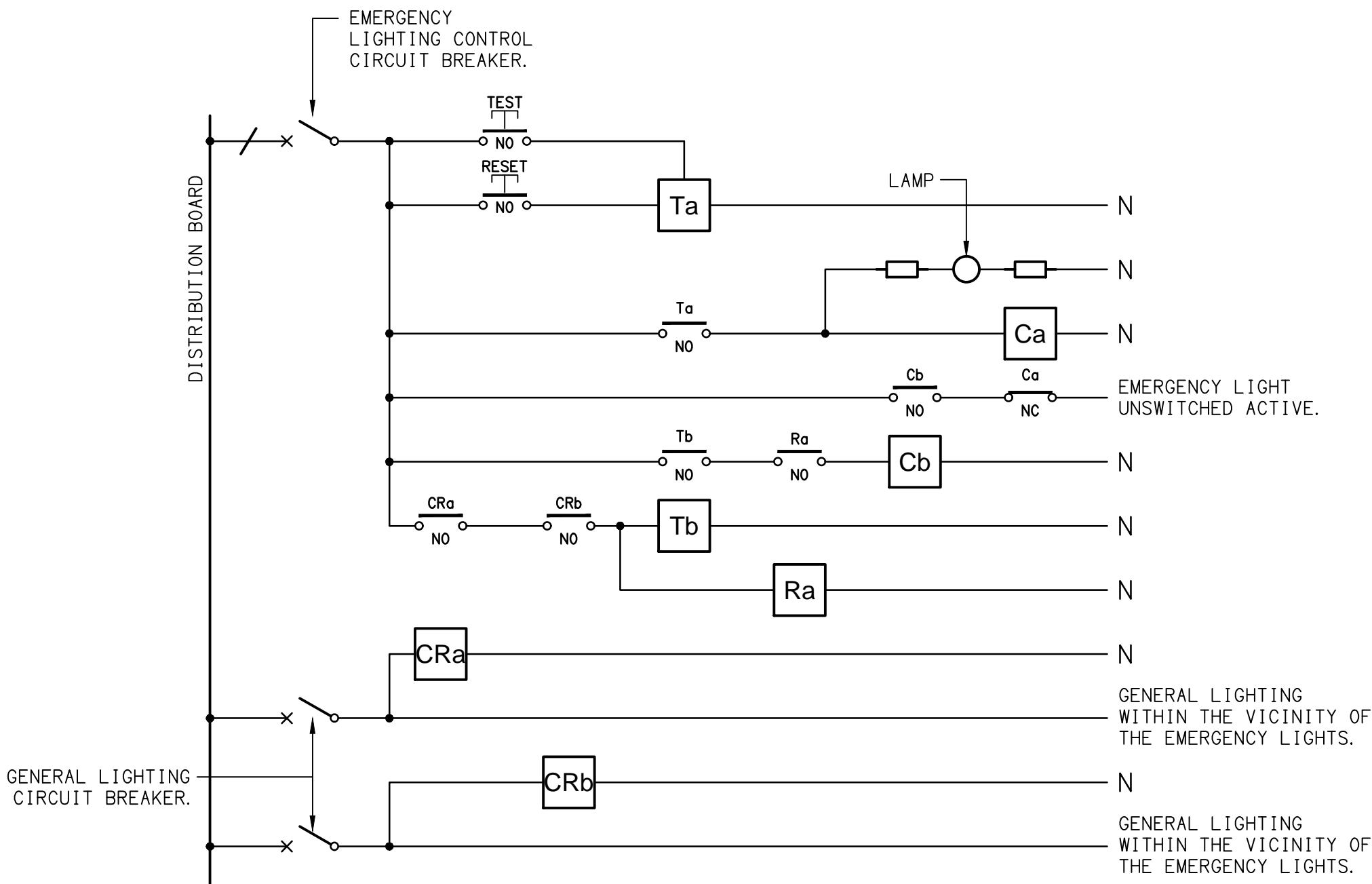
CRx - CONTROL RELAY x.

Rx - RELAY x.



SCHEMATIC

RJ45 PINOUT CONFIGURATION
NOT TO SCALE



NOTES

1. THE EMERGENCY LIGHT UNSWITCHED ACTIVE / GENERAL LIGHTING SWITCHED ACTIVE CIRCUIT ARRANGEMENT AND CONTROL IS TYPICAL FOR ALL CIRCUITS SUPPLYING EMERGENCY LIGHTS.

2. PROVIDE ADDITIONAL CONTROL RELAYS (CRx) CONFIGURED AS PER CRa AND CRb FOR ALL ADDITIONAL LIGHTING CIRCUITS THAT SUPPLY LIGHTS IN THE VICINITY OF THE EMERGENCY LIGHTS.

SCHEMATIC

EMERGENCY LIGHTING
NOT TO SCALE

<div>ELECTRICAL DESIGN GROUP BRISBANE PTY LTD ACN 092 710 793</div> <div>TRADING AS: ELECTRICAL DESIGN GROUP</div>	<div>THE COPYRIGHT OF THIS DRAWING REMAINS THE PROPERTY OF THE ELECTRICAL DESIGN GROUP.</div>	<div> ELECTRICAL DESIGN GROUP ELECTRICAL BUILDING SERVICES CONSULTANTS BRISBANE GOLD COAST</div> <div>P.O.Box 15, Sherwood Q.4075 Phone: (07) 3278 4375 Email: brisbane@edg.net.au Web: www.edg.net.au</div>	<div>PROJECT: NISSAN - IPSWICH</div>	<div>DRAWING: ELECTRICAL SERVICES LEGEND & DETAILS</div>					
	<div>USE FIGURED DIMENSIONS IN PREFERENCE TO SCALE.</div>		<div>5 BRISBANE ROAD, BUNDAMBA, QUEENSLAND</div>	<div>SCALE: NOT TO SCALE AT A1</div>					
	<div>ALL DIMENSIONS TO BE VERIFIED ONSITE.</div>		<table><tr><td>PROJECT NO: C3117a</td><td>DRAWING NO: E01</td><td>REVISION: C</td></tr></table>				PROJECT NO: C3117a	DRAWING NO: E01	REVISION: C
	PROJECT NO: C3117a		DRAWING NO: E01	REVISION: C					

NOTES

1. EXTENT OF WORKS

THE ELECTRICAL SERVICES SUB-CONTRACT INCLUDES BUT IS NOT LIMITED TO THE FOLLOWING:

- SUPPLY AND INSTALLATION OF ALL COMPONENTS FORMING PART OF THE ELECTRICAL SERVICES.
- CO-ORDINATION.
- INSPECTIONS.
- TESTING AND COMMISSIONING.
- MAINTENANCE.
- CABLING, CABLE SUPPORT SYSTEMS AND ACCESS.
- POWER DISTRIBUTION.
- LIGHTING.
- COMMUNICATIONS CABLING.
- ALL MINOR COMPONENTS AND INCIDENTAL WORKS NOT SPECIFICALLY REFERRED TO, HOWEVER NECESSARY TO COMPLETE THE ELECTRICAL SERVICES INSTALLATION SUCH THAT IT IS HANDED OVER COMPLETE, OPERATIONAL AND FIT FOR THE INTENDED USE.

SUPPLY ALL LABOUR, MATERIALS, EQUIPMENT, AND ALL OTHER ITEMS, WHETHER MENTIONED IN DETAIL OR NOT, REQUIRED FOR THE SATISFACTORY COMPLETION OF THE ELECTRICAL SERVICES INSTALLATION, LEAVING IN FULL WORKING ORDER TO THE SATISFACTION OF THE PROJECT MANAGER.

PRIOR TO COMMENCING WORK CONSULT SITE MANAGEMENT FOR ANY HAZARDOUS MATERIAL AND OR ASBESTOS REGISTERS AS WELL AS UNDERTAKE A THOROUGH INSPECTION OF THE SITE TO IDENTIFY ANY POTENTIAL HAZARDOUS MATERIALS, ASBESTOS AND HEALTH OR SAFETY RISKS. ADVISE THE CONTRACTOR OF ANY POTENTIAL HAZARDOUS MATERIALS, ASBESTOS AND HEALTH OR SAFETY RISKS IF IDENTIFIED AND DO NOT COMMENCE WORK UNTIL AN APPROPRIATE MANAGEMENT PLAN HAS BEEN DEVELOPED AND AGREED TO BY ALL PARTIES.

ACCEPT FULL RESPONSIBILITY FOR LIASING, ARRANGING AND CO-ORDINATION ALL WORKS THAT HAVE AN EFFECT ON OR WILL BE AFFECTED BY THE ELECTRICAL SERVICES.

REMOVE ALL OF THE EXISTING ELECTRICAL SERVICES THAT BECOME REDUNDANT DUE TO THE WORKS.

2. WORKMANSHIP

ENSURE THAT THE WORK IS PERFORMED BY THE HOLDER OF A CURRENT ELECTRICAL SUB CONTRACTOR LICENSE. ENSURE THE INSTALLATION AND ALL COMPONENTS, FIXTURES, FITTINGS, OUTLETS AND CABLES ARE SUPPLIED AND INSTALLED TO A HIGH STANDARD THROUGHOUT, AND INSTALLED IN A NEAT AND TRADESMAN LIKE MANNER, TO THE CURRENT INDUSTRY STANDARDS. ENSURE ALL MATERIALS AND COMPONENTS OF A SIMILAR TYPE ARE OF THE SAME MANUFACTURER AND INSTALLED IN A UNIFORM MANNER.

IT IS THE ELECTRICAL SUB CONTRACTOR'S RESPONSIBILITY TO ENSURE THAT THE INSTALLATION IS FIT FOR PURPOSE AND IS PROVIDED AS A COMPLETE WORKING INSTALLATION. IT IS THE ELECTRICAL SUB CONTRACTOR'S RESPONSIBILITY TO PROVIDE ALL COMPONENTS, FITTINGS, FIXTURES, SYSTEMS, PROGRAMMING ETC IRRESPECTIVE OF THE LEVEL DETAILED IN THE DOCUMENTS SUCH THAT THE INSTALLATION IS PROVIDED AS A COMPLETE WORKING INSTALLATION.

CONCEAL ALL WIRING AND CONDUITS. EXPOSED CABLING OR CONDUITS ARE GENERALLY NOT ACCEPTABLE. IT IS NOTED THAT CHASING AND REINSTATEMENT WILL BE REQUIRED. ENSURE ALL COMPONENTS, EQUIPMENT AND MATERIALS SUPPLIED ARE NEW, UNUSED, DESIGNED AND SELECTED TO ENSURE SATISFACTORY OPERATION UNDER VARYING ATMOSPHERIC, CLIMATIC, HUMID TROPICAL CONDITIONS WITHOUT DISTORTION AND DETERIORATION IN ANY PART AFFECTING EFFICIENCY AND RELIABILITY OF THE SYSTEMS. DESIGN AND SELECT ALL EQUIPMENT TO PROVIDE THE NECESSARY SAFETY TO HUMAN LIFE AND PROPERTY DURING OPERATION AND MAINTENANCE WITH PARTICULAR ATTENTION GIVEN TO ELECTRICAL SAFETY AND SEGREGATION PRECAUTIONS.

CHECK THE FINISHED PAINTWORK AROUND THE AREA OF EACH INSTALLATION AND TOUCH UP ALL DAMAGED PARTS AND FINISHES AFTER THE INSTALLATION OF THE ELECTRICAL SERVICES.

ALL WORKS ARE TO BE CARRIED OUT IN ACCORDANCE WITH THE BUILDER'S PROGRAM. ENSURE ALL FINAL LOCATIONS OF OUTLETS AND FITTINGS ARE CO-ORDINATED ONSITE WITH THE ARCHITECT AND ALL OTHER SERVICES, TO THE APPROVAL OF THE PROJECT MANAGER. ALLOW TO CO-ORDINATE THE FINAL LOCATION OF ALL EQUIPMENT, FITTINGS, & OUTLETS, SUCH THAT THEY ARE INSTALLED IN ACCORDANCE WITH THE AS3000 RESTRICTED ZONES, AND ARE NOT COVERED INAPPROPRIATELY.

ENSURE THAT ALL METAL SURFACES ARE SUITABLY PROTECTED AGAINST CORROSION, AND THAT ALL PLASTIC MATERIALS ARE UV STABILISED.

PROVIDE ALL MATERIALS AS NEW, AND OF THE HIGHEST CLASS AVAILABLE FOR THEIR RESPECTIVE TYPES. ENSURE ALL ASPECTS OF THE WORK ARE OF A HIGH STANDARD THROUGHOUT, AND INSTALLED IN A NEAT AND TRADESMAN LIKE MANNER, TO THE CURRENT INDUSTRY STANDARDS.

3. STANDARDS

IRRESPECTIVE OF INFORMATION CONTAINED IN THE ELECTRICAL SERVICES DOCUMENTS OR IN INSTRUCTIONS, IT IS THE ELECTRICAL SUB CONTRACTOR'S RESPONSIBILITY TO ENSURE ALL ELECTRICAL SERVICES WORKS ARE INSTALLED IN ACCORDANCE WITH THE REQUIREMENTS OF THE FOLLOWING. REFER ANY DISCREPANCIES BETWEEN THE REQUIREMENTS OF THE FOLLOWING AND/OR THE ELECTRICAL SERVICES DOCUMENTS AND INSTRUCTIONS TO THE ARCHITECT FOR CLARIFICATION PRIOR TO THE PLACING OF ORDERS, FABRICATION OR INSTALLATION OF THE ITEMS/METHODS IN DISCREPANCY.

- NCC BUILDING CODE OF AUSTRALIA.
- ELECTRICITY ACT.
- ELECTRICAL SAFETY ACT.
- AS/NZS3000.
- AS3008.
- AS2293.
- WORKPLACE HEALTH AND SAFETY ACT.
- TELECOMMUNICATIONS ACT.
- ACMA REQUIREMENTS.

4. AUTHORITIES

ENSURE ALL OF THE ELECTRICAL SERVICES COMPLY WITH THE REQUIREMENTS OF ALL REGULATORY AUTHORITIES HAVING JURISDICTION OVER THE SITE INCLUDING BUT NOT LIMITED TO THE FOLLOWING:

- ACMA.
- LOCAL COUNCIL.
- LOCAL SUPPLY AUTHORITY.
- STATE GOVERNMENT DEPARTMENT OF ENVIRONMENT AND HERITAGE.
- QLD GOVERNMENT, DIVISION OF WORKPLACE, HEALTH AND SAFETY.
- QLD FIRE AND RESCUE AUTHORITY.

5. CABLES

UNLESS OTHERWISE SPECIFIED, INSTALL AND TERMINATE CABLES IN ACCORDANCE WITH THE MANUFACTURERS' RECOMMENDATIONS. DETERMINE THE FINAL ROUTES TO SUIT THE BUILDING STRUCTURE AND SITE CONDITIONS. UNLESS NOTED OTHERWISE, PROVIDE ALL 240 VOLT POWER AND LIGHTING WIRING AS 2.5mm² TWIN & EARTH STRANDED COPPER CONDUCTORS, PVC INSULATED 0.6/1kV V75 GRADE TO AS3174, PROTECTED BY A 20 AMP CIRCUIT BREAKER. ALL CONDUIT AND FITTINGS TO BE RIGID UPVC TO AS2053, UNLESS NOTED OTHERWISE.

NOTES

6. POWER DISTRIBUTION

THE POWER DISTRIBUTION COMPONENT OF THIS CONTRACT INCLUDES PROVIDING A NEW DISTRIBUTION BOARD DB-3 AND THE REMOVAL OF THE EXISTING DISTRIBUTION BOARD DB-2. RESUPPLY ANY EXISTING CIRCUIT SUPPLIED FROM DB-2 THAT REMAINS FROM THE NEW DB-3 WITH NEW SWITCHGEAR AND CONTROLS. REMOVE ALL EXISTING ELECTRICAL SERVICES THAT BECOME REDUNDANT.

UTILISE THE EXISTING SPARE 100 AMPS MCCB LABELLED SHOWROOM AC IN THE MSB TO SUPPLY THE NEW DB-3 VIA A NEW 25mm 4C Cu SUBMAIN.

THE POWER DISTRIBUTION COMPONENT OF THIS CONTRACT INCLUDES, BUT IS NOT LIMITED TO THE FOLLOWING EXTENT OF WORK:

- POWER DISTRIBUTION.
- DISTRIBUTION BOARD DB-3.
- REMOVAL OF DISTRIBUTION BOARD DB-2.
- CABLE ACCESS WAYS.
- CIRCUITS.
- ISOLATORS AND OUTLETS.
- TESTING AND COMMISSIONING.
- REMOVAL OF ALL EXISTING REDUNDANT SERVICES.

PROVIDE THE DB-3 AS/WITH:

- SHOP DRAWINGS FOR APPROVAL.
- WALL MOUNTED.
- LIGHT GREY ENCLOSURE.
- WHITE ESCUTCHEONS WITH LIFT OFF HINGES AND 1/4 TURN LATCHES TO SECURE THE ESCUTCHEON THAT REMAIN PART OF THE ESCUTCHEON.
- 92268 KEY LOCKABLE DOOR.
- FORM 1

REFER TO THE DISTRIBUTION BOARD SCHEDULES FOR ADDITIONAL REQUIREMENTS AND CIRCUIT DETAILS.

7. LIGHTING

ALL OF THE LIGHT FITTINGS, LAMPS AND ACCESSORIES ARE TO BE PROVIDED AS PART OF THIS CONTRACT WITH THE EXCEPTION OF THE L1 FITTINGS WHICH ARE TO BE SUPPLIED BY THE CLIENT. THE LIGHTING COMPONENT OF THIS CONTRACT INCLUDES, BUT IS NOT LIMITED TO THE FOLLOWING EXTENT OF WORK:

- LIGHTING.
- LIGHT FITTINGS AND ACCESSORIES.
- EMERGENCY AND EXIT LIGHTING.
- EARTHING OF THE LIGHTING INSTALLATION.
- LIGHTING CONTROL.
- LIGHTING SUBCIRCUITS.
- TESTING AND COMMISSIONING.
- RECONNECTION OF THE EXISTING LIGHTING THAT REMAINS INCLUDING ALL NEW SWITCHGEAR AND CONTROLS.
- REMOVAL OF ALL EXISTING REDUNDANT LIGHTING SERVICES.

PROVIDE A SINGLE POINT EMERGENCY LIGHTING SYSTEM THAT COMPLIES WITH THE LATEST ISSUE OF ALL PARTS AS2293 AND THE RELEVANT PARTS OF THE NCC BCA. INSTALL EMERGENCY LIGHT FITTINGS NOMINATED AS MAINTAINED WITH THE LAMP PERMANENTLY ON SUPPLIED VIA AN UNSWITCHED ACTIVE MAINS SUPPLY WHEN THE MAINS SUPPLY IS AVAILABLE. WHEN THE MAINS SUPPLY IS NOT AVAILABLE, THE LAMP IS TO REMAIN ON SUPPLIED BY THE EMERGENCY PACK. SINGLE LAMP MAINTAINED EMERGENCY LIGHTS ARE NOT SWITCHED WITH THE LOCAL GENERAL AREA LIGHTING. (THE LAMP IS ALWAYS ON.)

INSTALL EMERGENCY LIGHT FITTINGS NOMINATED AS NON-MAINTAINED AS FOLLOWS:

- IF THE FITTING IS NOT BEING SWITCHED, THE LAMP IS TO REMAIN OFF WHEN THE MAINS SUPPLY IS AVAILABLE. WHEN THE MAINS SUPPLY IS NOT AVAILABLE THE LAMP IS TO BE SWITCHED ON SUPPLIED BY THE EMERGENCY PACK. UNSWITCHED SINGLE LAMP NON-MAINTAINED EMERGENCY LIGHTS ARE NOT SWITCHED WITH THE LOCAL GENERAL AREA LIGHTING. (THE LAMP IS ON ONLY WHEN THE MAINS SUPPLY IS NOT AVAILABLE.)
- IF THE FITTING IS BEING SWITCHED, THE LAMP IS TO BE SUPPLIED AND CONTROLLED WITH THE LOCAL GENERAL AREA LIGHTING WHEN THE MAINS SUPPLY IS AVAILABLE. WHEN THE MAINS SUPPLY IS NOT AVAILABLE THE LAMP IS TO BE SWITCHED ON, SUPPLIED BY THE EMERGENCY PACK. (THE LAMP IS ON WHEN TURNED ON WITH THE LOCAL GENERAL LIGHTING OR THE MAIN SUPPLY IS NOT AVAILABLE.)

INSTALL EMERGENCY LIGHTS SUCH THAT THE STATUS INDICATOR L.E.D. IS CLEARLY VISIBLE AND THE TEST BUTTONS ARE READILY ACCESSIBLE. LABEL EACH CIRCUIT BREAKER WHICH CONTROLS THE UNSWITCHED ACTIVE TO EXIT LIGHTS WITH A LABEL FIXED ADJACENT; ENGRAVED PLASTIC LAMINATE, GREEN BACKGROUND WITH WHITE CHARACTERS:-

WARNING
INTERRUPTING SUPPLY WILL DISCHARGE
EMERGENCY LIGHTING BATTERIES

PROVIDE WRITTEN EVIDENCE OF THE INITIAL COMMISSIONING AND TESTING AND TESTING FOR THE DURATION OF THE MAINTENANCE PERIOD IN ACCORDANCE WITH AS 2293.2.

THIS EVIDENCE IS TO BE IN THE FORM OF A LOG BOOK SIMILAR TO THE GENERAL LIGHTING SERVICE PTY LTD "EMERGENCY LIGHTING MAINTENANCE LOG BOOK AND MANUAL" WHICH IS TO BE PROVIDED BY THE ELECTRICAL SUB-CONTRACTOR AND HAVE ALL ENTRIES FULLY COMPLETED AND BE PRESENTED FOR INSPECTION AT PRACTICAL COMPLETION. THE LOG BOOK IS TO BE RETAINED BY THE ELECTRICAL SUB-CONTRACTOR FOR THE DURATION OF THE MAINTENANCE PERIOD, AND THE SIX MONTHLY TEST AND MAINTENANCE RESULTS ENTERED. THE LOG BOOK IS TO BE PRESENTED FOR APPROVAL AT FINAL COMPLETION (EXPIRY OF THE MAINTENANCE PERIOD) AND WILL BE FORWARDED TO THE OPERATOR FOR THEIR USE.

PROVIDE MAINTENANCE OF THE EMERGENCY AND EXIT LIGHTING INSTALLATION INCLUDING RECORDS IN ACCORDANCE WITH THE LATEST ISSUE OF ALL PARTS AS2293 AND THE RELEVANT PARTS OF THE NCC BCA. PROVIDE THE EMERGENCY LIGHTING SYSTEM WITH A SUPPLY SENSING AND TESTING FACILITY IN ACCORDANCE WITH AS 2293.1.

NOTES

8. COMMUNICATIONS CABLING

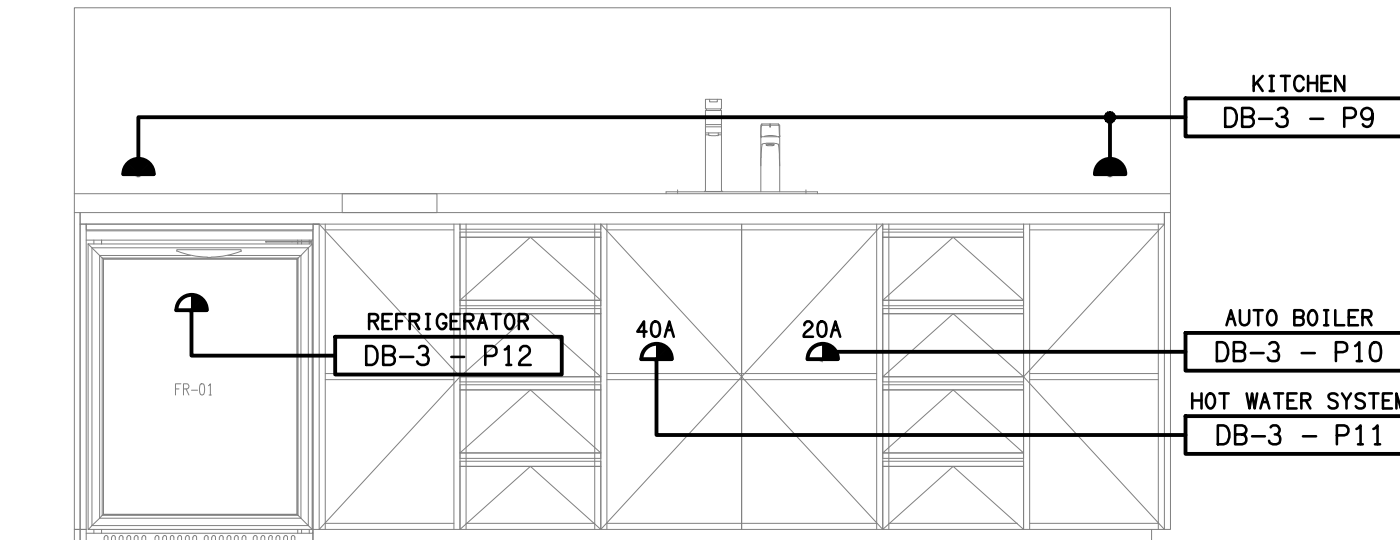
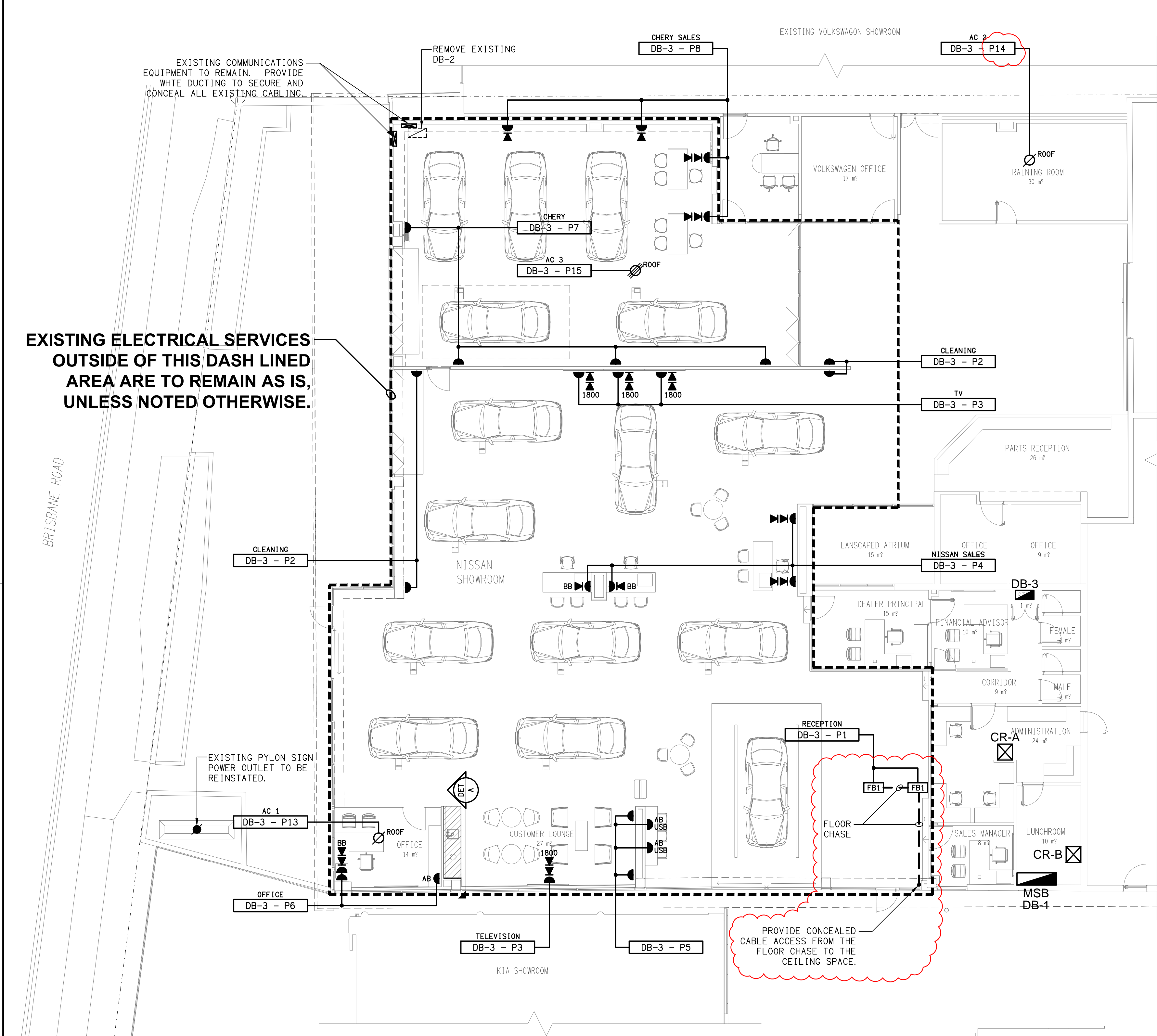
THE COMMUNICATIONS CABLING COMPONENT OF THIS CONTRACT INCLUDES NEW COMMUNICATIONS OUTLETS CABLED TO THE EXISTING COMMUNICATIONS RACK CR-A. PROVIDE ADDITIONAL PATCH PANELS AS NECESSARY TO ACCOMMODATE THE ADDITIONAL COMMUNICATIONS OUTLETS. THE COMMUNICATIONS CABLING COMPONENT OF THIS CONTRACT INCLUDES, BUT IS NOT LIMITED TO THE FOLLOWING EXTENT OF WORK:

- PATCH PANELS AS NECESSARY.
- CAT 6 COMMUNICATIONS OUTLETS AND CABLING.
- CABLE ACCESS WAYS.
- TESTING AND COMMISSIONING.
- REMOVAL OF ALL EXISTING COMMUNICATIONS SERVICES MADE REDUNDANT BY THE WORKS.

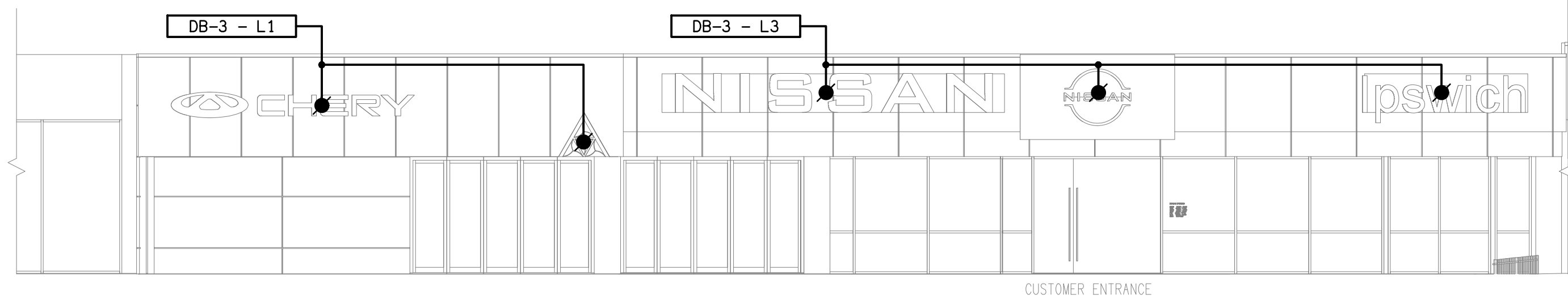
9. ABBREVIATIONS

A - AMP CURRENT RATING
AB - MOUNT ABOVE BENCH.
AFFL - ABOVE FINISHED FLOOR LEVEL.
BB - MOUNT BELOW BENCH.
BH - MOUNT ON BULKHEAD.
CEIL - MOUNT ON CEILING.
CS - MOUNT WITHIN CEILING SPACE.
C/W - COMPLETE WITH.
DW - DISHWASHER.
MCB - MINIATURE CIRCUIT BREAKER.
MCCB - MOULDED CASE CIRCUIT BREAKER.
MSB - MAIN SWITCHBOARD.
MW - MICROWAVE.
N - NEON / LED INDICATOR WHEN ON.
NTS - NOT TO SCALE.
RCBO - CIRCUIT PROTECTED VIA A 30ma RESIDUAL CURRENT DEVICE INTEGRAL TO THE CIRCUIT BREAKER. 3-PHASE RCBO TO BE 4-POLE.
REF - REFRIGERATOR.
SUS - MOUNT SUSPENDED FROM CEILING.
UNO - UNLESS NOTED OTHERWISE.
WP - WEATHERPROOF TO IP56 UNO.
500 - NUMBER DENOTES MOUNTING HEIGHT AFFL.

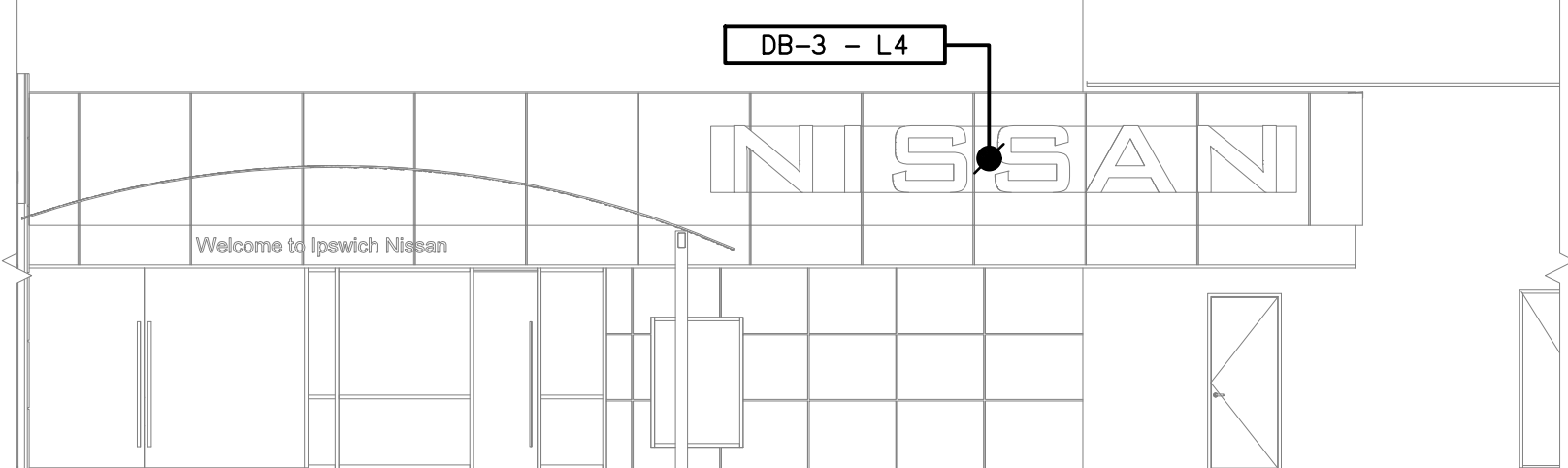
<div>ELECTRICAL DESIGN GROUP BRISBANE PTY LTD ACN 092 710 793</div> <div>TRADING AS: ELECTRICAL DESIGN GROUP</div>		<div>THE COPYRIGHT OF THIS DRAWING REMAINS THE PROPERTY OF THE ELECTRICAL DESIGN GROUP.</div> <div>USE FIGURED DIMENSIONS IN PREFERENCE TO SCALE.</div> <div>ALL DIMENSIONS TO BE VERIFIED ONSITE.</div>	<div><div><div></div><div>ELECTRICAL DESIGN GROUP</div></div><div>ELECTRICAL BUILDING SERVICES CONSULTANTS</div><div>BRISBANE GOLD COAST</div><div>P.O.Box 15, Sherwood Q.4075 Phone: (07) 3278 4375 Email: brisbane@edg.net.au Web: www.edg.net.au</div></div>	<div>PROJECT: NISSAN - IPSWICH</div> <div>5 BRISBANE ROAD, BUNDAMBA, QUEENSLAND</div>	<table><tr><td>B</td><td>TENDER</td><td>18/10/2023</td></tr><tr><td>REV:</td><td>DESCRIPTION:</td><td>DATE:</td></tr><tr><td colspan="3">DRAWING: ELECTRICAL SERVICES NOTES</td></tr><tr><td>SCALE: NOT TO SCALE AT A1</td><td>PROJECT NO: C3117a</td><td>DRAWING NO: E02</td><td>REVISION: B</td></tr></table>	B	TENDER	18/10/2023	REV:	DESCRIPTION:	DATE:	DRAWING: ELECTRICAL SERVICES NOTES			SCALE: NOT TO SCALE AT A1	PROJECT NO: C3117a	DRAWING NO: E02	REVISION: B
B	TENDER	18/10/2023																
REV:	DESCRIPTION:	DATE:																
DRAWING: ELECTRICAL SERVICES NOTES																		
SCALE: NOT TO SCALE AT A1	PROJECT NO: C3117a	DRAWING NO: E02	REVISION: B															



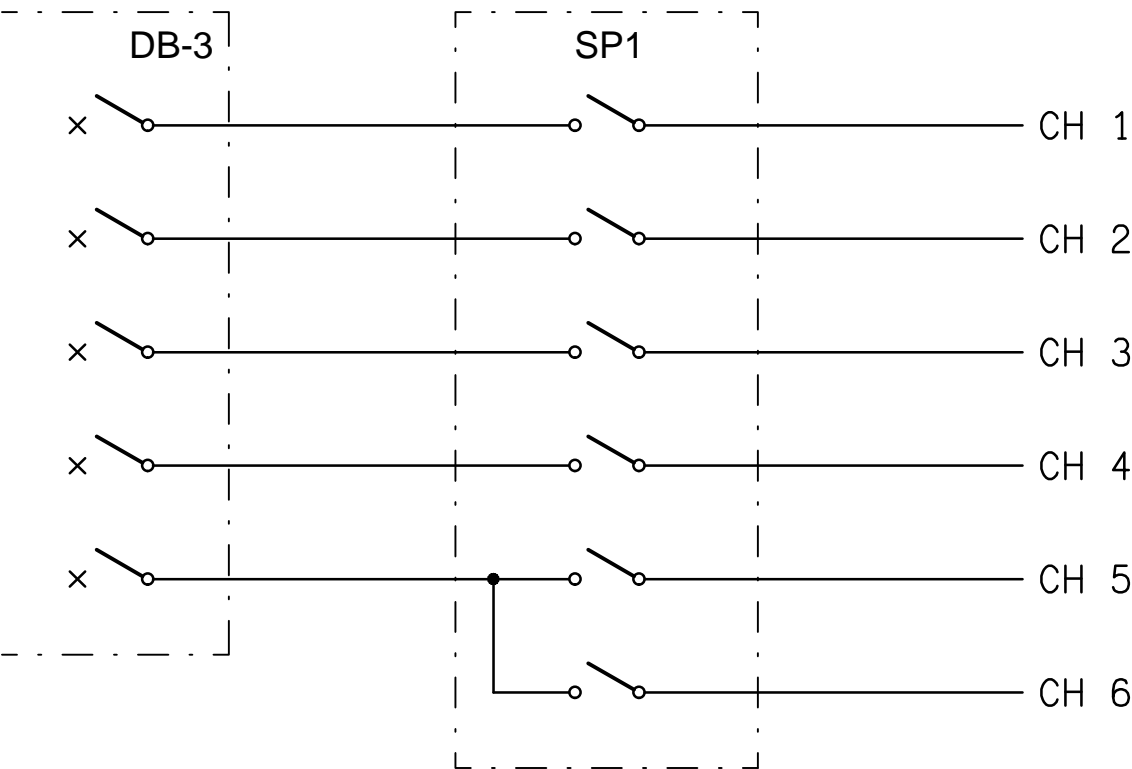
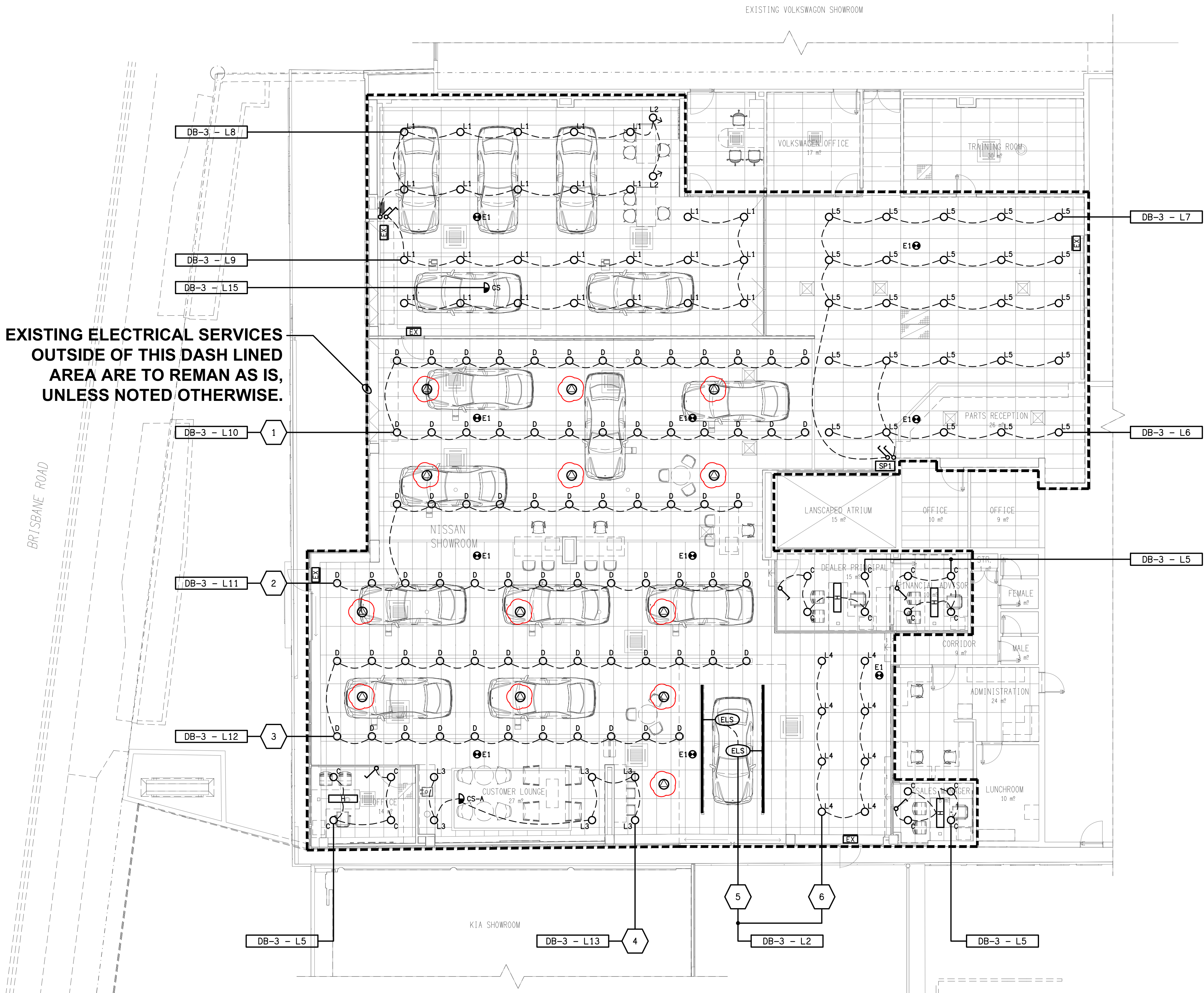
DETAIL A
CUSTOMER KITCHENETTE ELEVATION
SCALE 1: 20



CUSTOMER ENTRY WEST
EXTERNAL BUILDING ELEVATION
SCALE 1: 100



NISSAN SOUTH
EXTERNAL BUILDING ELEVATION
SCALE 1: 100



SCHEMATIC
SP1 LIGHTING CONTROL
NOT TO SCALE