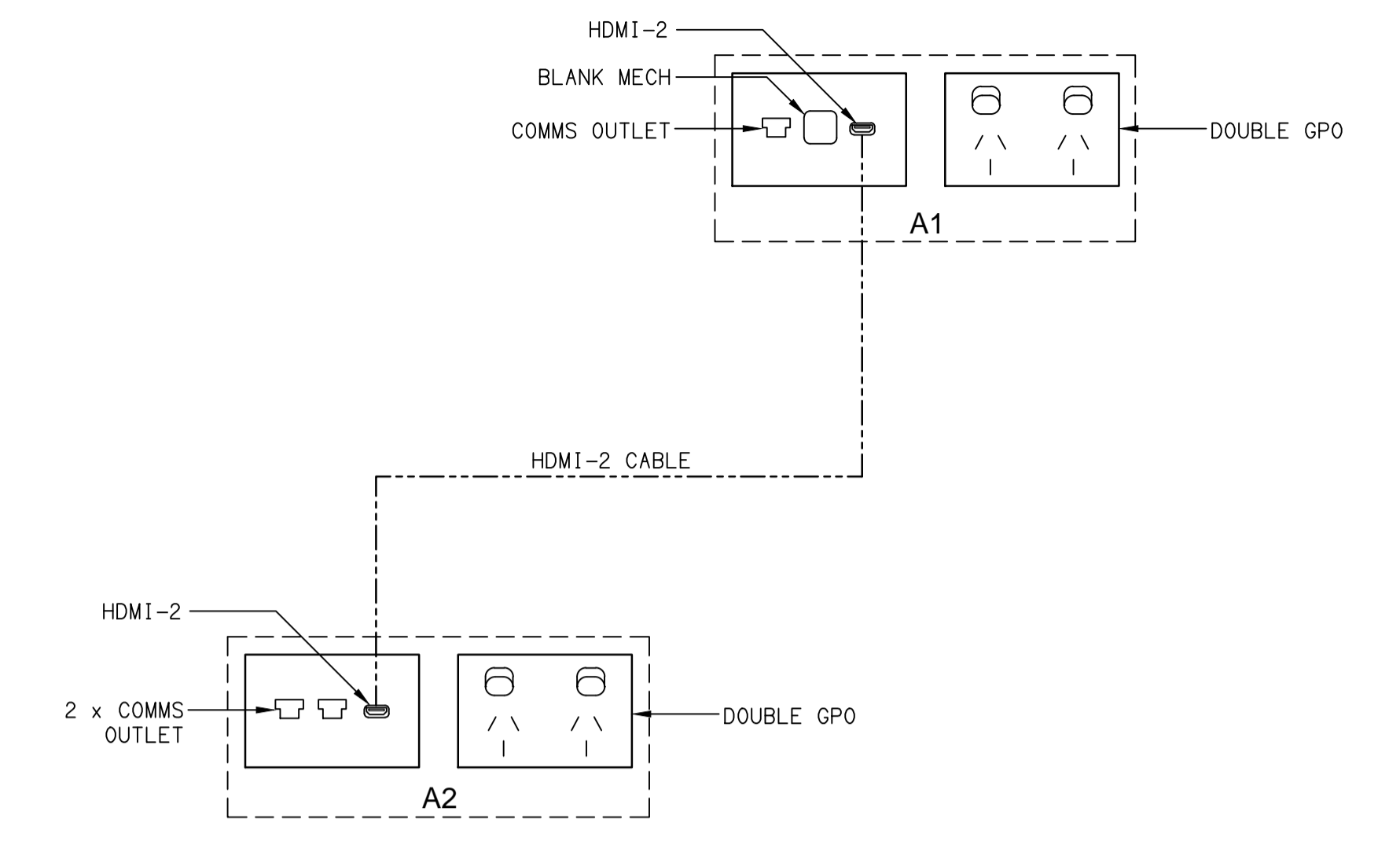
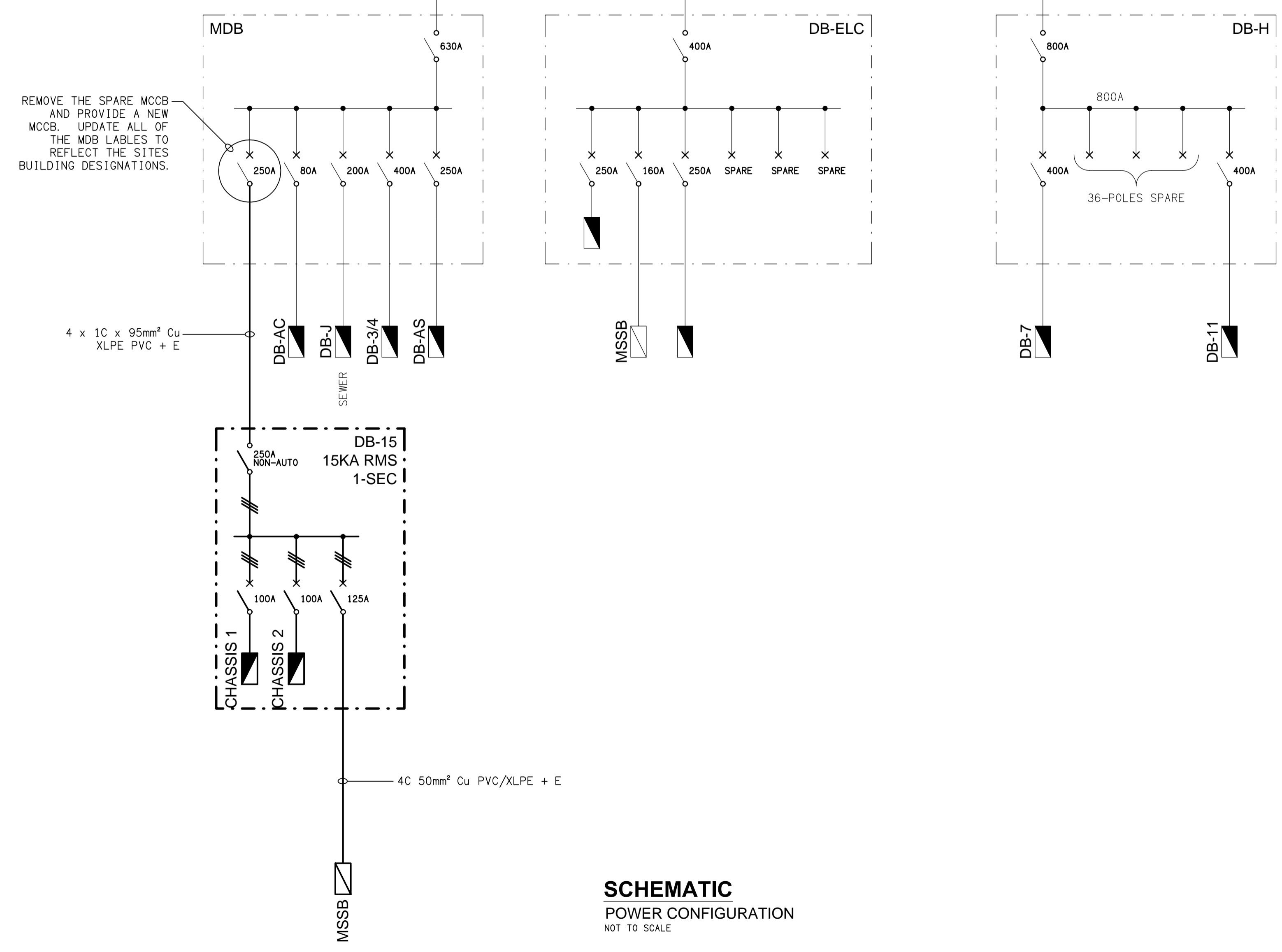


**SCHEMATIC**  
POWER CONFIGURATION  
NOT TO SCALE



**SCHEMATIC**  
A1 & A2 FACEPLATES  
NOT TO SCALE



**SCHEMATIC**  
POWER CONFIGURATION  
NOT TO SCALE

ELECTRICAL DESIGN GROUP BRISBANE  
PTY LTD  
ACN 092 710 793  
TRADING AS:  
ELECTRICAL DESIGN GROUP

THE COPYRIGHT OF THIS DRAWING  
REMAINS THE PROPERTY OF THE  
ELECTRICAL DESIGN GROUP.  
USE FIGURED DIMENSIONS  
IN PREFERENCE TO SCALE.  
ALL DIMENSIONS TO BE  
VERIFIED ONSITE.

**ELECTRICAL DESIGN GROUP**  
ELECTRICAL BUILDING SERVICES CONSULTANTS  
BRISBANE GOLD COAST  
P.O. Box 15, Sherwood Q.4075  
Phone: (07) 3278 4375  
Email: brisbane@edg.net.au  
Web: www.edg.net.au

PROJECT:  
**KINGS CHRISTIAN COLLEGE - PIMPAMA  
JUNIOR RESOURCE BUILDING - PIM 15**  
198 PIMPAMA JACOBS WELL ROAD, PIMPAMA, QUEENSLAND

C	CONSTRUCTION	08/12/2023
REV:	DESCRIPTION:	DATE:
DRAWING: <b>ELECTRICAL SERVICES SCHEMATICS</b>		
SCALE: NOT TO SCALE AT A1	PROJECT NO: <b>C2975a</b>	DRAWING NO: <b>E06</b>
	REVISION: <b>C</b>	