



ELECTRICAL DESIGN GROUP

ELECTRICAL BUILDING SERVICES CONSULTANTS

P.O. Box 15, SHERWOOD Q. 4075

Phone: (07) 3278 4375

Website: www.edg.net.au Email: brisbane@edg.net.au

C2964a - BURNSIDE ROAD, GILBERTON

C2964a-0001(G).xls

ELECTRICAL SERVICES CONTRACT DOCUMENT SCHEDULE

REVISION G - 16 MAY 2024

| ISSUING INFORMATION | | | | DATE OF ISSUE | | | | | | | |
|---------------------|-------|----|----|------------------|----|----|----|------------------|---|---|--|
| | DAY | 13 | 18 | 20 | 17 | 17 | 24 | 16 | | | |
| | MONTH | 10 | 10 | 12 | 04 | 04 | 04 | 05 | | | |
| | YEAR | 23 | 23 | 23 | 24 | 24 | 24 | 24 | | | |
| REASON FOR ISSUE | | | | P | T | T | C | C | C | C | |
| A = APPROVAL | | | | C = CONSTRUCTION | | | | N = COORDINATION | | | |
| | | | | P = PRELIMINARY | | | | T = TENDER | | | |

| DISTRIBUTION | | | | NUMBER OF COPIES | | | | | | | |
|-------------------------|--|--|--|------------------|----|----|----|----------|----|----|--|
| WWW.EDG.NET.AU | | | | 1E | 1E | 1E | 1E | 1E | 1E | 1E | |
| ITTENSOHN CONSTRUCTIONS | | | | 1E | 1E | 1E | 1E | 1E | 1E | 1E | |
| | | | | | | | | | | | |
| | | | | | | | | | | | |
| | | | | | | | | | | | |
| | | | | | | | | | | | |
| | | | | | | | | | | | |
| P = PRINT | | | | T = TRACING | | | | D = DISC | | | |
| | | | | E = EMAIL | | | | F = FAX | | | |

| DOCUMENTS | | REVISION | | | | | | | | | |
|-----------------|--|----------|---|---|---|---|---|---|--|--|--|
| C2964a-E01.dwg | LEGEND & NOTES | A | B | | C | | D | E | | | |
| C2964a-E02.dwg | SCHEMATICS & DETAILS | A | B | | C | | | | | | |
| C2964a-E03.dwg | SITE PLAN & ROOF PLAN | A | B | C | D | E | F | | | | |
| C2964a-E04.dwg | GROUND LEVEL FLOOR PLAN & CEILING PLAN | A | B | C | D | E | | | | | |
| C2964a-E05.dwg | LEVEL 1 FLOOR PLAN & CEILING PLAN | A | B | C | D | | | | | | |
| | | | | | | | | | | | |
| C2964a-0001.xls | CONTRACT DOCUMENT SCHEDULE | A | B | C | D | E | F | G | | | |
| C2964a-0002.xls | EQUIPMENT SCHEDULE | A | | B | C | | | | | | |
| C2964a-0004.xls | DISTRIBUTION BOARD DB-1 SCHEDULE | A | B | | C | D | | | | | |
| C2964a-0005.xls | DISTRIBUTION BOARD DB-2 SCHEDULE | A | B | | C | D | | | | | |
| | | | | | | | | | | | |
| C2964a-0001.zip | FITTING & OUTLET DATASHEETS | | A | | | | | | | | |
| | | | | | | | | | | | |
| | | | | | | | | | | | |
| | | | | | | | | | | | |
| | | | | | | | | | | | |
| | | | | | | | | | | | |
| | | | | | | | | | | | |
| | | | | | | | | | | | |



ELECTRICAL DESIGN GROUP

ELECTRICAL BUILDING SERVICES CONSULTANTS

P.O. Box 15, SHERWOOD Q. 4075

Phone: (07) 3278 4375 Fax: (07) 3716 0222

Web Site: www.edg.net.au Email: brisbane@edg.net.au

C2964a - BURNSIDE ROAD, GILBERTON

C2964a-0002(C).xls

ELECTRICAL EQUIPMENT SCHEDULE

REVISION C - 17 APRIL 2024

THE LIGHT FITTING SUPPLIER CONTACT DETAILS MAY BE AVAILABLE ON THE EDG WEBSITE VIA THE FOLLOWING LINK
www.edg.net.au/Links/Lighting.htm

| TYPE | LAMPS | DESCRIPTION | COLOUR / ACCESSORY | CATALOGUE No | REV |
|------|---|---|--------------------|---|-----|
| L1 | 150W 4000K LED | ROD SUSPENDED HIGH BAY C/W INTEGRAL DRIVER | BLACK | EQUAL TO GAMMA ILLUMINATION ORBIT 881483 | A |
| L2 | 100W 4000K LED | ROD SUSPENDED IP 67 HIGH BAY C/W INTEGRAL DRIVER | BLACK | EQUAL TO GAMMA ILLUMINATION ORBIT 881538 | A |
| L3 | 24W LED 4000K | 600 LONG WALL MOUNTED IP65 DIFFUSED BATTEN C/W INTEGRAL ELECTRONIC CONTROL GEAR | LIGHT GREY | EQUAL TO GAMMA ILLUMINATION STORM 1510 | A |
| L4 | 45W LED 4000K | 1200 LONG IP65 DIFFUSED BATTEN C/W INTEGRAL ELECTRONIC CONTROL GEAR AND A NON MAINTAINED AS2293 EMERGENCY PACK SUSPENDED / SURFACE MOUNTED AS REQUIRED. THE L14 FITTINGS ARE NOT SWITCHED AND ARE TO ONLY OPERATE UPON POWER SUPPLY FAILURE IN ACCORDANCE WITH AS2293 | NA | EQUAL TO GAMMA ILLUMINATION STORM 1311-4K | B |
| L5 | 24W LED 4000K | 600 LONG WALL MOUNTED IP65 DIFFUSED BATTEN C/W INTEGRAL ELECTRONIC CONTROL GEAR AND PRESENCE DETECTION SENSOR | LIGHT GREY | EQUAL TO GAMMA ILLUMINATION STORM 1510-MS | A |
| L6 | A SINGLE HORIZONTAL RUN OF LED STRIP LIGHT 4000K WHITE LEDS AT 12MM SPACING WITH REMOTE CONTROL GEAR. MOUNT THE LED STRIP UNDER THE OVERHEAD CUPBOARDS HARD AGAINST THE SPLASHBACK AS PER THE ARCHITECTURAL JOINERY DETAILS THE SUPPLIER IS TO CUT / JOIN THE LED STRIPS TO SUIT THE SITE DIMENSIONS. DO NOT CUT THE LED STRIPS ON SITE SCREW FIX THE ALUMINIUM SUPPORT IN PLACE. | | | NEON PRODUCTS AUSTRALIA LF-DFB-NW-300-12 + PR-LIN172153-F | A |
| L7 | 40W 4000K LED | 1200 X 300 LAY IN FLAT PLATE LED FITTING C/W REMOTE DRIVER MOUNTED IN THE T-BAR | WHITE TRIM | GAMMA ILLUMINATION PHANTOM 884501 | A |
| L8 | 34W 4000K LED | 600 X 600 LAY IN FLAT PLATE LED FITTING C/W REMOTE DRIVER MOUNTED IN THE CEILING T BAR | WHITE TRIM | EQUAL TO GAMMA ILLUMINATION AXIS 1549-4K-34W | A |
| L9 | 8W 3000K LED | AMENITY RECESSED DOWNLIGHT C/W REMOTE DALI DRIVER | WHITE | EQUAL TO GAMMA ILLUMINATION MYLO 1004-WFL-3K-W | A |
| E1 | LED | EMERGENCY LIGHT: RECESSED NON-MAINTAINED EMERGENCY LIGHT. AS2293 CLASSIFICATION C0-D40 - C90-D40. | WHITE | CLEVERTRONICS LCFLED | A |



ELECTRICAL DESIGN GROUP

ELECTRICAL BUILDING SERVICES CONSULTANTS

P.O. Box 15, SHERWOOD Q. 4075

Phone: (07) 3278 4375 Fax: (07) 3716 0222

Web Site: www.edg.net.au Email: brisbane@edg.net.au

C2964a - BURNSIDE ROAD, GILBERTON

C2964a-0002(C).xls

ELECTRICAL EQUIPMENT SCHEDULE

REVISION C - 17 APRIL 2024

THE LIGHT FITTING SUPPLIER CONTACT DETAILS MAY BE AVAILABLE ON THE EDG WEBSITE VIA THE FOLLOWING LINK
www.edg.net.au/Links/Lighting.htm

| TYPE | LAMPS | DESCRIPTION | COLOUR / ACCESSORY | CATALOGUE No | REV |
|---|-------|--|--------------------|-------------------------|-----|
| E2 | LED | JUMBO EXIT LIGHT: MAINTAINED 40M VIEWING DISTANCE EXIT LIGHT C/W DIFFUSERS & DIRECTIONAL ARROWS AS SHOWN. CEILING SURFACE MOUNT OR WALL MOUNT BETWEEN 2100mm & 2700mm AFFL IF THERE IS NO VERTICAL SURFACE TO MOUNT THE FITTING ON WITHIN THIS RANGE CONFIRM THE MOUNTING HEIGHT WITH THE ENGINEER. PROVIDE A CUSTOM WHITE COUNTER LEAVER MOUNTING BRACKET AS REQUIRED AS2293 CLASSIFICATION C0-D6.3 - C90-E3.2. | WHITE | CLEVERTRONICS CJELED-40 | A |
| EX | LED | EXIT LIGHT: MAINTAINED 24M VIEWING DISTANCE EXIT LIGHT C/W DIFFUSERS & DIRECTIONAL ARROWS AS SHOWN. CEILING SURFACE MOUNT OR WALL MOUNT BETWEEN 2100mm & 2700mm AFFL IF THERE IS NO VERTICAL SURFACE TO MOUNT THE FITTING ON WITHIN THIS RANGE CONFIRM THE MOUNTING HEIGHT WITH THE ENGINEER. PROVIDE A CUSTOM WHITE COUNTER LEAVER MOUNTING BRACKET AS REQUIRED AS2293 CLASSIFICATION C0-D8 - C90-E3.2. | WHITE | CLEVERTRONICS LUBPRO-SM | A |
| EMERGENCY PACK | | LIGHT FITTINGS THAT ARE DESIGNATED AS BEING PROVIDED WITH AN EMERGENCY PACK ARE TO BE PROVIDED WITH AN INTEGRAL AS2293 EMERGENCY PACK. THE FITTINGS ARE TO BE NON MAINTAINED WITH ALL LAMPS SWITCHED AS PER THE LIGHTING CONTROL FOR THAT SPACE UNLESS NOTED OTHERWISE. REFER TO THE SPECIFICATION FOR FURTHER DETAILS OF THE CONFIGURATION AND SWITCHING OF EMERGENCY LIGHTS. | | | A |
| LIGHTING CONTROL SWITCH PANEL (SP1 AND SP2) | | MULTI GANG LIGHT SWITCH PANEL ONE SWITCH PER CIRCUIT MOUNTED AT 1000mm AFFL UNLESS NOTED OTHERWISE. | WHITE | CLIPSAL C2000 | A |
| PROXIMITY DETECTOR SWITCH (PD) | | ADJUSTABLE FLUSH RECESSED 360 DEGREE PIR PRESENCE DETECTOR TO OPERATE THE ASSOCIATED LIGHTS FOR A PRE-SET AMOUNT OF TIME. ADJUST THE TIME AND SENSITIVITY ON SITE AS DIRECTED BY THE ENGINEER. SUBMIT DETAILS OF THE MOVEMENT DETECTOR SWITCH FOR APPROVAL PRIOR TO ORDERING | WHITE | CLIPSAL C2000 | A |
| ONE-WAY LIGHT SWITCH | | ONE-WAY LIGHT SWITCH C/W CIRCUIT IDENTIFICATION ON THE FACEPLATE BEHIND THE SURROUND MOUNTED AT 1000mm AFFL UNLESS NOTED OTHERWISE. | WHITE | CLIPSAL C2000 | A |
| TWO-WAY LIGHT SWITCH | | TWO-WAY LIGHT SWITCH C/W CIRCUIT IDENTIFICATION ON THE FACEPLATE BEHIND THE SURROUND MOUNTED AT 1000mm AFFL UNLESS NOTED OTHERWISE. | WHITE | CLIPSAL C2000 | A |
| SINGLE POWER OUTLET | | SINGLE POWER OUTLET C/W CIRCUIT IDENTIFICATION ON THE FACEPLATE BEHIND THE SURROUND MOUNT AT 300mm AFFL U.N.O. RATING 10A U.N.O. | WHITE | CLIPSAL C2000 | A |



ELECTRICAL DESIGN GROUP

ELECTRICAL BUILDING SERVICES CONSULTANTS

P.O. Box 15, SHERWOOD Q. 4075

Phone: (07) 3278 4375 Fax: (07) 3716 0222

Web Site: www.edg.net.au Email: brisbane@edg.net.au

C2964a - BURNSIDE ROAD, GILBERTON

C2964a-0002(C).xls

ELECTRICAL EQUIPMENT SCHEDULE

REVISION C - 17 APRIL 2024

THE LIGHT FITTING SUPPLIER CONTACT DETAILS MAY BE AVAILABLE ON THE EDG WEBSITE VIA THE FOLLOWING LINK
www.edg.net.au/Links/Lighting.htm

| TYPE | LAMPS | DESCRIPTION | COLOUR / ACCESSORY | CATALOGUE No | REV |
|--------------------------------|-------|--|--------------------|------------------|-----|
| DOUBLE POWER OUTLET | | DOUBLE POWER OUTLET C/W CIRCUIT IDENTIFICATION ON THE FACEPLATE BEHIND THE SURROUND MOUNT AT 300mm AFFL U.N.O. RATING 10A U.N.O. | WHITE | CLIPSAL C2000 | A |
| DOUBLE POWER OUTLET (USB) | | DOUBLE POWER OUTLET C/W USB A AND USB C CHARGER , CIRCUIT IDENTIFICATION ON THE FACEPLATE BEHIND THE SURROUND MOUNT AT 300mm AFFL U.N.O. RATING 10A U.N.O. | WHITE | CLIPSAL C2000 | A |
| WEATHERPROOF POWER OUTLET (WP) | | IP54 WEATHERPROOF SINGLE / DOUBLE POWER OUTLET AS NOTED ON DRAWING C/W COVER FLAP OVER SOCKET. MOUNT AT MINIMUM 1100mm AFFL U.N.O. RATING 10A U.N.O. | - | CLIPSAL WSCF227F | A |
| SPECIAL PURPOSE OUTLET | | SPECIAL PURPOSE OUTLET TYPE AS NOTED. MOUNT AT 1350mm AFFL U.N.O. RATING 20A U.N.O. CONNECT TO EQUIPMENT VIA FLEXIBLE CONDUIT. | | | A |
| SINGLE-PHASE ISOLATOR | | SINGLE-PHASE WEATHERPROOF ISOLATOR. MOUNT AT 1350mm AFFL U.N.O. RATING 20A U.N.O. CONNECT TO EQUIPMENT VIA FLEXIBLE CONDUIT. | - | CLIPSAL WHT20 | A |
| THREE-PHASE ISOLATOR | | THREE-PHASE WEATHERPROOF ISOLATOR. MOUNT AT 1350mm AFFL U.N.O. RATING 20A U.N.O. CONNECT TO EQUIPMENT VIA FLEXIBLE CONDUIT. | - | CLIPSAL WHT35 | A |
| CAT 6 COMMUNICATIONS OUTLET | | RJ45 CAT-6 COMMUNICATIONS OUTLET, CABLED BACK TO THE COMMUNICATIONS RACK CR-A TERMINATED ONTO FACILITY PATCH PANELS VIA 4-PAIR CAT-6 UTP CABLE. MOUNT UP TO 3 RJ45 OUTLETS PER MULTI-GANG FACEPLATE WITH SEPARATE PERMANENT LABELLING FOR EACH OUTLET. | WHITE | CLIPSAL C2000 | A |
| PCD | | NBN PREMISES CONNECTION DEVICE IN ACCORDANCE WITH THE NBN REQUIREMENTS. PROVIDE A CONCEALED P23 NBN COMPLIANT DROP CONDUIT FROM THE PCD TO THE ACCESSIBLE CEILING SPACE WITHIN EACH TENANCY AS WELL AS A P23 NBN COMPLIANT DROP CONDUIT FROM THE PCD TO CR-A. | | | A |
| COMMUNICATIONS RACK CR-A | | PROVIDE CR-A AS A 600 DEEP WALL MOUNTED HINGED 19 INCH 18RU COMMUNICATIONS RACK REPLACING THE EXISTING RACK. PROVIDE THE RACK WITH A FIBER OPTIC AND PATCH PANELS TO TERMINATE THE OPTICAL FIBRE CABLE AND ALL OF THE EXISTING AND FACILITY COMMUNICATIONS OUTLET CABLES. PROVIDE DETAILS OF THE RACK FOR APPROVAL PRIOR TO ORDERING . | | | A |
| PV INVERTER 1 & PV INVERTER 2 | | WALL MOUNTED PV INVERTERS PROVIDED AS PART OF THE TENANCY FIT OUT | | | A |
| DB-1 | | WALL MOUNTED DISTRIBUTION BOARD DB-1 REFER TO THE NOTES AND THE DISTRIBUTION BOARD DB-1 SCHEDULE FOR ADDITIONAL INFORMATION AND REQUIREMENTS. PROVIDE A SHOP DRAWING OF THE DB FOR APPROVAL. | | | A |



ELECTRICAL DESIGN GROUP

ELECTRICAL BUILDING SERVICES CONSULTANTS

P.O. Box 15, SHERWOOD Q. 4075

Phone: (07) 3278 4375 Fax: (07) 3716 0222

Web Site: www.edg.net.au Email: brisbane@edg.net.au

C2964a - BURNSIDE ROAD, GILBERTON

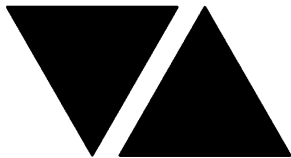
C2964a-0002(C).xls

ELECTRICAL EQUIPMENT SCHEDULE

REVISION C - 17 APRIL 2024

THE LIGHT FITTING SUPPLIER CONTACT DETAILS MAY BE AVAILABLE ON THE EDG WEBSITE VIA THE FOLLOWING LINK
www.edg.net.au/Links/Lighting.htm

| TYPE | LAMPS | DESCRIPTION | COLOUR / ACCESSORY | CATALOGUE No | REV |
|----------------------|-------|---|--------------------|--------------|-----|
| DB-2 | | WALL MOUNTED DISTRIBUTION BOARD DB-2 REFER TO THE NOTES AND THE DISTRIBUTION BOARD DB-2 SCHEDULE FOR ADDITIONAL INFORMATION AND REQUIREMENTS. PROVIDE A SHOP DRAWING OF THE DB FOR APPROVAL. | | | A |
| MSB | | SURFACE MOUNTED MAIN SWITCHBOARD INCORPORATING THE METERING REFER TO THE NOTES AND SCHEMATIC FOR ADDITIONAL REQUIREMENTS PROVIDE A SHOP DRAWING OF THE MSB FOR APPROVAL. | | | A |
| METER | | QCEM COMPLIANT DIRECT WIRED METER | | | A |
| CABLE ACCESS TYPE CA | | 1 x 100 DIA UNDERGROUND CONSUMERS MAIN CONDUIT FROM THE ENERGEX LEV PILLAR TO THE MSB AND 3 x 100 DIA UNDERGROUND CONSUMERS MAIN CONDUITS FROM THE MSB TO THE BOUNDARY ADJACENT THE LV PILLAR FOR FUTURE USE. | | | B |
| CABLE ACCESS TYPE CB | | P50 UNDERGROUND NBN COMPLIANT LEAD IN CONDUIT FROM THE FOOTPATH PIT TO THE PCD | | | A |
| CABLE ACCESS TYPE CC | | 50 DIA UNDERGROUND CONDUIT FROM THE MSB TO A FLUSH 100 X 100 X 100 GALVANIZED JUNCTION BOX TO FACILITATE FUTURE CARPARK LIGHTING. PROVIDE THE CONDUIT WITH A SPARE DRAW WIRE. | | | A |
| CABLE ACCESS TYPE CD | | 50 DIA UNDERGROUND CONDUIT INTERCONNECTION FLUSH 100 X 100 X 100 GALVANIZED JUNCTION BOXES TO FACILITATE FUTURE CARPARK LIGHTING. PROVIDE THE CONDUIT WITH A SPARE DRAW WIRE. | | | A |
| CABLE ACCESS TYPE CE | | 50 DIA UNDERGROUND CONDUIT UNDER THE DRIVEWAY CAPPED 600 PAST THE HARDSTAND | | | A |
| CABLE ACCESS TYPE CF | | 50 DIA UNDERGROUND CONDUIT FROM THE DISTRIBUTION BOARD TO A FLUSH 100 X 100 X 100 GALVANIZED JUNCTION BOX TO FACILITATE FUTURE EV CHARGER. PROVIDE THE CONDUIT WITH A SPARE DRAW WIRE. | | | C |



ELECTRICAL DESIGN GROUP

ELECTRICAL BUILDING SERVICES CONSULTANTS

P.O. Box 15, SHERWOOD Q. 4075

Phone: (07) 3278 4375 Fax: (07) 3716 0222

Web Site: www.edg.net.au Email: brisbane@edg.net.au

C2964a - BURNSIDE ROAD, GILBERTON

C2964a-0004(D).xls

DISTRIBUTION BOARD DB-1

REVISION D - 17 APRIL 2024

| FAULT CURRENT: 6KA | | | | | | | 250A NON AUTO LOAD BREAK | REV |
|--|----|------------------------|---------------------------------|--------------------------------|-----------|------------------|--------------------------|-----|
| MAIN SWITCH: | | | | | | | | A |
| CHASSIS SIZE: 60 POLE | | | | | | | | A |
| SUPPLIED FROM: MSB | | | | | | | | A |
| CHASSIS RATING: 250A | | | | | | | 4C25 | A |
| SUPPLY CABLE: | | | | | | | | A |
| PHASES: 3 | | | | | | | | A |
| PROVIDE THE DB WITH A FULL WIDTH EMPTY DIN RAIL TO ACCOMMODATE FUTURE CONTACTORS AND CONTROLS IN ADDITION TO THE CONTROLS INCLUDING THE EQUIPMENT PROVIDED AS PART OF THE INITIAL WORKS. PROVIDE THE DB WITH AN AS2293 EMERGENCY LIGHTING CONTROL SYSTEM TO CONTROL THE ASSOCIATED EMERGENCY LIGHTS. PROVIDE THE DB WITH SURGE PROTECTION. | | | | | | | | A |
| CIRC | PH | CIRCUIT BREAKER (amps) | CONTROL EQUIPMENT | CABLE SIZE (mm ²) | LOCATION | CIRCUIT USE | | |
| P1 | 3 | 63 | | 2.5 | WAREHOUSE | PV INVERTER | A | |
| P2 | 3 | 20 | RCBO | 2.5 | WAREHOUSE | ROLLER SHUT DOOR | A | |
| P3 | 3 | 20 | RCBO | 2.5 | WAREHOUSE | SLIDING DOOR | A | |
| P4 | 3 | 20 | RCBO | 2.5 | WAREHOUSE | RSD | A | |
| P5 | 3 | 25 | RCBO | 4.0 | ROOF | AC | D | |
| P6 | 1 | 20 | RCBO TC ON 6.00 AM OFF 10.00 PM | 2.5 | ROOF | EXHAUST | A | |
| P7 | 1 | 20 | RCBO | 2.5 | AMENITY | GPOs | A | |
| P8 | 1 | 20 | RCBO | 2.5 | OFFICE | GPOs | A | |
| P9 | | | | | | | C | |
| P10 | 3 | 20 | RCBO | 2.5 | KITCHEN | HWS | C | |
| P11 | 1 | 20 | RCBO | 2.5 | OFFICE | AC | D | |
| | | | | | | | | |
| | | | | | | | | |
| | | | | | | | | |
| | | | | | | | | |
| | | | | | | | | |
| | | | | | | | | |
| | | | | | | | | |
| | | | | | | | | |
| | | | | | | | | |
| | | | | | | | | |
| L1 | 1 | 20 | RCBO PE ON DUSK OFF DAWN | 2.5 | EXTERNAL | LIGHTS | A | |
| L2 | 1 | 20 | RCBO PE ON DUSK TC OFF 10.00PM | 2.5 | EXTERNAL | LIGHTS | A | |
| L3 | 1 | 20 | RCBO | 2.5 | WAREHOUSE | LIGHTS | A | |
| L4 | 1 | 20 | RCBO | 2.5 | WAREHOUSE | LIGHTS | A | |
| L5 | 1 | 20 | RCBO | 2.5 | WAREHOUSE | LIGHTS | A | |
| L6 | 1 | 20 | RCBO | 2.5 | OFFICE | LIGHTS | A | |
| L7 | 1 | 20 | RCBO | 2.5 | OFFICE | LIGHTS | A | |
| | | | | | | | A | |
| | | | | | | | | |
| | | | | | | | | |



ELECTRICAL DESIGN GROUP

ELECTRICAL BUILDING SERVICES CONSULTANTS

P.O. Box 15, SHERWOOD Q. 4075

Phone: (07) 3278 4375

Website: www.edg.net.au Email: brisbane@edg.net.au

C2964a - BURNSIDE ROAD, GILBERTON










C2964a-0005(D).xls

DISTRIBUTION BOARD DB-2

REVISION D - 17 APRIL 2024

| FAULT CURRENT: 6KA | | | | | | | REV |
|--|----|------------------------|---------------------------------|--------------------------------|-----------|------------------|-----|
| MAIN SWITCH: 250A NON AUTO LOAD BREAK | | | | | | | A |
| CHASSIS SIZE: 60 POLE | | | | | | | A |
| SUPPLIED FROM: MSB | | | | | | | A |
| CHASSIS RATING: 250A | | | | | | | A |
| SUPPLY CABLE: 4C25 | | | | | | | A |
| PHASES: 3 | | | | | | | A |
| PROVIDE THE DB WITH A FULL WIDTH EMPTY DIN RAIL TO ACCOMMODATE FUTURE CONTACTORS AND CONTROLS IN ADDITION TO THE CONTROLS INCLUDING THE EQUIPMENT PROVIDED AS PART OF THE INITIAL WORKS. PROVIDE THE DB WITH AN AS2293 EMERGENCY LIGHTING CONTROL SYSTEM TO CONTROL THE ASSOCIATED EMERGENCY LIGHTS. PROVIDE THE DB WITH SURGE PROTECTION. | | | | | | | A |
| CIRC | PH | CIRCUIT BREAKER (amps) | CONTROL EQUIPMENT | CABLE SIZE (mm ²) | LOCATION | CIRCUIT USE | |
| P1 | 3 | 63 | | 2.5 | WAREHOUSE | PV INVERTER | A |
| P2 | 3 | 20 | RCBO | 2.5 | WAREHOUSE | ROLLER SHUT DOOR | A |
| P3 | 3 | 20 | RCBO | 2.5 | WAREHOUSE | SLIDING DOOR | A |
| P4 | 3 | 20 | RCBO | 2.5 | WAREHOUSE | ROLLER SHUT DOOR | A |
| P5 | 3 | 25 | RCBO | 4.0 | ROOF | AC | D |
| P6 | 1 | 20 | RCBO TC ON 6.00 AM OFF 10.00 PM | 2.5 | ROOF | EXHAUST | A |
| P7 | 1 | 20 | RCBO | 2.5 | AMENITY | GPOs | A |
| P8 | 1 | 20 | RCBO | 2.5 | OFFICE | GPOs | A |
| P9 | 1 | 20 | RCBO | 2.5 | RECEPTION | GPOs | A |
| P10 | 1 | 20 | RCBO | 2.5 | | CR-A | A |
| P11 | 1 | 40 | RCBO | 6.0 | KITCHEN | AUTOBOILER | A |
| P12 | 3 | 20 | RCBO | 2.5 | KITCHEN | HWS | C |
| P13 | 1 | 20 | RCBO | 2.5 | KITCHEN | GPOs | A |
| P14 | | | | | | | C |
| P15 | 1 | 20 | RCBO | 2.5 | OFFICE | AC | D |
| | | | | | | | |
| | | | | | | | |
| | | | | | | | |
| | | | | | | | |
| L1 | 1 | 20 | RCBO PE ON DUSK OFF DAWN | 2.5 | EXTERNAL | LIGHTS | A |
| L2 | 1 | 20 | RCBO PE ON DUSK TC OFF 10.00PM | 2.5 | EXTERNAL | LIGHTS | A |
| L3 | 1 | 20 | RCBO | 2.5 | WAREHOUSE | LIGHTS | A |
| L4 | 1 | 20 | RCBO | 2.5 | WAREHOUSE | LIGHTS | A |
| L5 | 1 | 20 | RCBO | 2.5 | WAREHOUSE | LIGHTS | A |
| L6 | 1 | 20 | RCBO | 2.5 | OFFICE | LIGHTS | A |
| L7 | 1 | 20 | RCBO | 2.5 | OFFICE | LIGHTS | A |
| L8 | 1 | 20 | RCBO PE ON DUSK OFF DAWN | 2.5 | ROOF | SIGN | C |
| | | | | | | | |
| | | | | | | | |
| | | | | | | | |
| | | | | | | | |

LEGEND

| | |
|--|--|
| L1  | L1: 150W HIGH BAY. |
| L2  | L2: 100W HIGH BAY. |
|  | L3: 600 LONG IP65 BATTEN. |
|  | L4: 1200 LONG IP65 BATTEN C/W NON MAINTAINED EMERGENCY PACK. |
|  | L5: 600 LONG WALL MOUNTED IP65 BATTEN C/W INTEGRAL SENSOR. |
|  | L6: OVERHEAD CUPBOARD LED STRIP LIGHT. |
|  | L7: 300 x 1200 FLAT PLATE TBAR TROFFER. |
|  | L8: 600 x 600 FLAT PLATE TBAR TROFFER. |
| L9  | L9: RECESSED DOWNLIGHT. |

Ⓢ

ALL ELECTRICAL PENETRATIONS THROUGH THE ROOF SHEETING ARE TO BE IN LINE WITH THE STRUCTURAL OR MECHANICAL SERVICES PENETRATIONS TO AVOID DEDICATED FLASHINGS FOR THE ELECTRICAL SERVICES.

NOTES

- ## 6. POWER DISTRIBUTION

SUPPLY ALL LABOUR, MATERIALS, EQUIPMENT, AND ALL OTHER ITEMS, WHETHER MENTIONED IN DETAIL OR NOT, REQUIRED FOR THE SATISFACTORY COMPLETION OF THE ELECTRICAL SERVICES INSTALLATION, LEAVING IN FULL WORKING ORDER TO THE SATISFACTION OF THE PROJECT MANAGER.

ACCEPT FULL RESPONSIBILITY FOR LIAISING, ARRANGING AND CO-ORDINATION ALL WORKS THAT HAVE AN EFFECT ON OR WILL BE AFFECTED BY THE ELECTRICAL SERVICES.

- ## 7. LIGHTING

ENSURE THAT THE WORK IS PERFORMED BY THE HOLDER OF A CURRENT ELECTRICAL SUB CONTRACTOR LICENSE. ENSURE THE INSTALLATION AND ALL COMPONENTS, FIXTURES, FITTINGS, OUTLETS AND CABLES ARE SUPPLIED AND INSTALLED TO A HIGH STANDARD THROUGHOUT, AND INSTALLED IN A NEAT AND TRADESMAN LIKE MANNER, TO THE CURRENT INDUSTRY STANDARDS. ENSURE ALL MATERIALS AND COMPONENTS OF A SIMILAR TYPE ARE OF THE SAME MANUFACTURER AND INSTALLED IN A UNIFORM MANNER.

IT IS THE ELECTRICAL SUB CONTRACTORS RESPONSIBILITY TO ENSURE THAT THE INSTALLATION IS FIT FOR PURPOSE AND IS PROVIDED AS A COMPLETE WORKING INSTALLATION. IT IS THE ELECTRICAL SUB CONTRACTORS RESPONSIBILITY TO PROVIDE ALL COMPONENTS, FITTINGS, FIXTURES, SYSTEMS, PROGRAMMING ETC IRRESPECTIVE OF THE LEVEL DETAILED IN THE DOCUMENTS SUCH THAT THE INSTALLATION IS PROVIDED AS A COMPLETE WORKING INSTALLATION.

CONCEAL ALL WIRING AND CONDUITS UNLESS APPROVED BY THE ARCHITECT. ENSURE ALL COMPONENTS, EQUIPMENT AND MATERIALS SUPPLIED ARE NEW, UNUSED, DESIGNED AND SELECTED TO ENSURE SATISFACTORY OPERATION UNDER VARYING ATMOSPHERIC, CLIMATIC, HUMID TROPICAL CONDITIONS WITHOUT DISTORTION AND DETERIORATION IN ANY PART AFFECTING EFFICIENCY AND RELIABILITY OF THE SYSTEMS. DESIGN AND SELECT ALL EQUIPMENT TO PROVIDE THE NECESSARY SAFETY TO HUMAN LIFE AND PROPERTY DURING OPERATION AND MAINTENANCE WITH PARTICULAR ATTENTION GIVEN TO ELECTRICAL SAFETY AND SEGREGATION PRECAUTIONS.

CHECK THE FINISHED PAINTWORK AROUND THE AREA OF EACH INSTALLATION AND TOUCH UP ALL DAMAGED PARTS AND FINISHES AFTER THE INSTALLATION OF THE ELECTRICAL SERVICES.

ALL WORKS ARE TO BE CARRIED OUT IN ACCORDANCE WITH THE BUILDER'S PROGRAM. ENSURE ALL FINAL LOCATIONS OF OUTLETS AND FITTINGS ARE CO-ORDINATED ON-SITE WITH THE ARCHITECT AND ALL OTHER SERVICES, TO THE APPROVAL OF THE PROJECT MANAGER. ALLOW TO CO-ORDINATE THE FINAL LOCATION OF ALL EQUIPMENT, FITTINGS, & OUTLETS, SUCH THAT THEY ARE INSTALLED IN ACCORDANCE WITH THE AS3000 RESTRICTED ZONES, AND ARE NOT COVERED INAPPROPRIATELY.

ENSURE THAT ALL METAL SURFACES ARE SUITABLY PROTECTED AGAINST CORROSION, AND THAT ALL PLASTIC MATERIALS ARE UV STABILISED.

PROVIDE ALL MATERIALS AS NEW, AND OF THE HIGHEST CLASS AVAILABLE FOR THEIR RESPECTIVE TYPES. ENSURE ALL ASPECTS OF THE WORK ARE OF A HIGH STANDARD THROUGHOUT, AND INSTALLED IN A NEAT AND TRADESMAN LIKE MANNER, TO THE CURRENT INDUSTRY STANDARDS.

- INSTALL EMERGENCY LIGHTS SUCH THAT THE STATUS INDICATOR L.E.D. IS CLEARLY VISIBLE AND THE TEST BUTTONS ARE READILY ACCESSIBLE. LABEL EACH CIRCUIT BREAKER WHICH CONTROLS THE UNSWITCHED ACTIVE TO EXIT LIGHTS WITH A LABEL FIXED ADJACENT; ENGRAVED PLASTIC LAMINATE, GREEN BACKGROUND WITH WHITE CHARACTERS: -

WARNING
INTERRUPTING SUPPLY WILL DISCHARGE
EMERGENCY LIGHTING BATTERIES

PROVIDE WRITTEN EVIDENCE OF THE INITIAL COMMISSIONING AND TESTING AND TESTING FOR THE DURATION OF THE MAINTENANCE PERIOD IN ACCORDANCE WITH AS 2293.2.

THIS EVIDENCE IS TO BE IN THE FORM OF A LOG BOOK SIMILAR TO THE GENERAL LIGHTING SERVICE PTY LTD "EMERGENCY LIGHTING MAINTENANCE LOG BOOK AND MANUAL" WHICH IS TO BE PROVIDED BY THE ELECTRICAL SUB-CONTRACTOR AND HAVE ALL ENTRIES FULLY COMPLETED AND BE PRESENTED FOR INSPECTION AT PRACTICAL COMPLETION. THE LOG BOOK IS TO BE RETAINED BY THE ELECTRICAL SUB-CONTRACTOR FOR THE DURATION OF THE MAINTENANCE PERIOD, AND THE SIX MONTHLY TEST AND MAINTENANCE RESULTS ENTERED. THE LOG BOOK IS TO BE PRESENTED FOR APPROVAL AT FINAL COMPLETION (EXPIRY OF THE MAINTENANCE PERIOD) AND WILL BE FORWARDED TO THE OPERATOR FOR THEIR USE.

PROVIDE MAINTENANCE OF THE EMERGENCY AND EXIT LIGHTING INSTALLATION INCLUDING RECORDS IN ACCORDANCE WITH THE LATEST ISSUE OF ALL PARTS AS2293 AND THE RELEVANT PARTS OF THE NCC BCA. PROVIDE THE EMERGENCY LIGHTING SYSTEM WITH A SUPPLY SENSING AND TESTING FACILITY IN ACCORDANCE WITH AS 2293. 1.

- THE COMMUNICATIONS CABLING COMPONENT OF THIS CONTRACT INCLUDES A NEW UNDERGROUND NBN LEADIN SERVICE TO A NBN PCD AND DROP CONDUITS TO THE CEILING SPACE WITHIN EACH TENANCY AND AN NBN NTD ADJACENT CR-A. ARRANGE WITH THE NBN CO TO INSTALL THE LEAD-IN SERVICE.

PROVIDE A COMMUNICATIONS RACK C/W ALL NECESSARY PATCH PANELS TO SUPPORT THE CAT 6 OUTLETS.

THE EXCHANGE SERVICES AND ACTIVE EQUIPMENT WILL BE PROVIDED BY THE OPERATOR. THE COMMUNICATIONS CABLING COMPONENT OF THIS CONTRACT INCLUDES, BUT IS NOT LIMITED TO THE FOLLOWING EXTENT OF WORK:

- NBN LEAD-IN SERVICE.
- NBN PCD.
- NBN DROP CONDUITS TO EACH TENANCY.
- NBN NTD.
- COMMUNICATIONS RACK C/W PATCH PANELS.
- CAT 6 OUTLETS.

- A - AMP CURRENT RATING
AB - MOUNT ABOVE BENCH.
AFFL - ABOVE FINISHED FLOOR LEVEL.
BB - MOUNT BELOW BENCH.
BH - MOUNT ON BULKHEAD.
CEIL - MOUNT ON CEILING.
CS - MOUNT WITHIN CEILING SPACE.
C/W - COMPLETE WITH.
DW - DISHWASHER.
MCB - MINUTARY CIRCUIT BREAKER.
MSB - MAIN SWITCHBOARD.
MSSB - MECHANICAL SERVICES SWITCHBOARD.
MW - MICROWAVE.
N - NEON / LED INDICATOR WHEN ON.
NTS - NOT TO SCALE.
OV - OVEN.
RCBO - CIRCUIT PROTECTED VIA A 30mA RESIDUAL CURRENT DEVICE
INTEGRAL TO THE CIRCUIT BREAKER. 3-PHASE RCBO TO BE 4-POLE.
REF - REFRIGERATOR.
S - MOUNT SUSPENDED FROM CEILING.
UNO - UNLESS NOTED OTHERWISE.
WP - WEATHERPROOF TO IP56 UNO.
500 - NUMBER DENOTES MOUNTING HEIGHT AFFL.

DRAWING:

DRAWING:

ELECTRICAL SER

LEGEND & NOTES

SCALE:
NOT TO SCALE AT A1

PROJECT NO.

C2964a

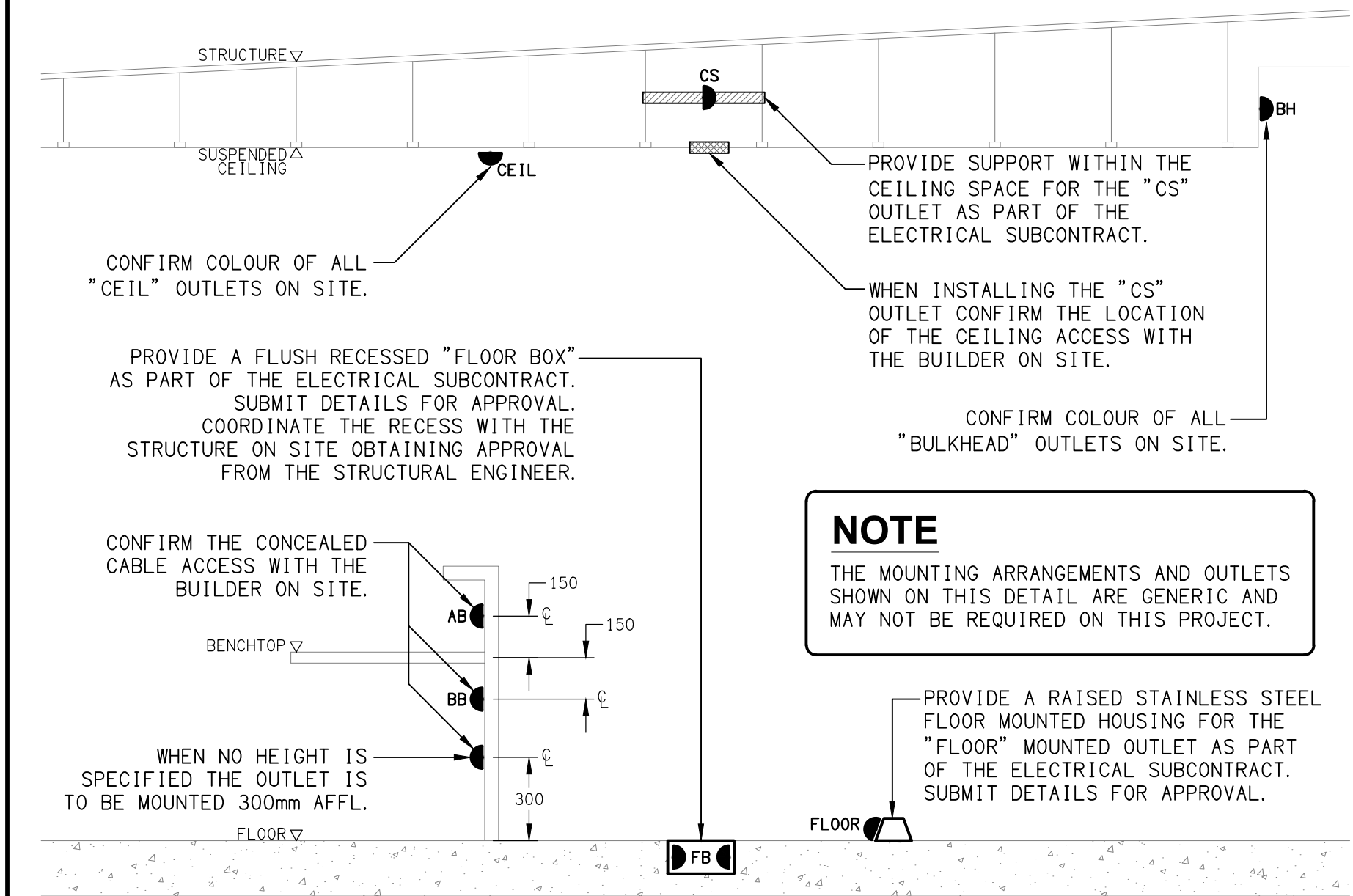
DRAWING NO:

E01

REVISION:

E

| | | | | | | | |
|--|--|--|--|---|---|---|--|
| <p>ELECTRICAL DESIGN GROUP BRISBANE PTY LTD ACN 092 710 793</p> <hr/> <p>TRADING AS: ELECTRICAL DESIGN GROUP</p> <hr/> | <p>THE COPYRIGHT OF THIS DRAWING REMAINS THE PROPERTY OF THE ELECTRICAL DESIGN GROUP.</p> <hr/> <p>USE FIGURED DIMENSIONS IN PREFERENCE TO SCALE.</p> <hr/> <p>ALL DIMENSIONS TO BE VERIFIED ONSITE.</p> <hr/> | | | <div data-bbox="1567 1925 1935 1938">  <div> ELECTRICAL DESIGN GROUP ELECTRICAL BUILDING SERVICES CONSULTANTS BRISBANE GOLD COAST </div> </div> <div data-bbox="1567 1938 1935 1946"> <p>P.O.Box 15, Sherwood Q.4075 Phone: (07) 3278 4375 Email: brisbane@edg.net.au Web: www.edg.net.au</p> </div> | <div data-bbox="1935 1925 2306 1938"> <div>PROJECT:</div> <div>BURNSIDE ROAD, GILBERTON</div> </div> <div data-bbox="1935 1938 2306 1946"> <div>LOT 4 BURNSIDE ROAD, GILBERTON, QUEENSLAND</div> </div> | <div data-bbox="2306 1925 2674 1938"> <div>DRAWING:</div> <div>ELECTRICAL SERVICES</div> <div>LEGEND & NOTES</div> </div> <div data-bbox="2306 1938 2674 1946"> <div>SCALE:</div> <div>NOT TO SCALE AT A1</div> </div> | <div data-bbox="2674 1925 2899 1938"> <div>PROJECT NO:</div> <div>C2964a</div> </div> <div data-bbox="2674 1938 2899 1946"> <div>DRAWING NO:</div> <div>E01</div> </div> <div data-bbox="2674 1946 2899 1953"> <div>REVISION:</div> <div>E</div> </div> |
|--|--|--|--|---|---|---|--|



DETAIL
TYPICAL OUTLET MOUNTINGS
NOT TO SCALE

EQUIPMENT:

TEST - TEST PUSH BUTTON MOUNTED ON THE DISTRIBUTION BOARD ESCUTCHEON.

RESET - RESET PUSH BUTTON MOUNTED ON THE DISTRIBUTION BOARD ESCUTCHEON.

LAMP - AMBER TEST INDICATING LAMP MOUNTED ON THE DISTRIBUTION BOARD ESCUTCHEON.

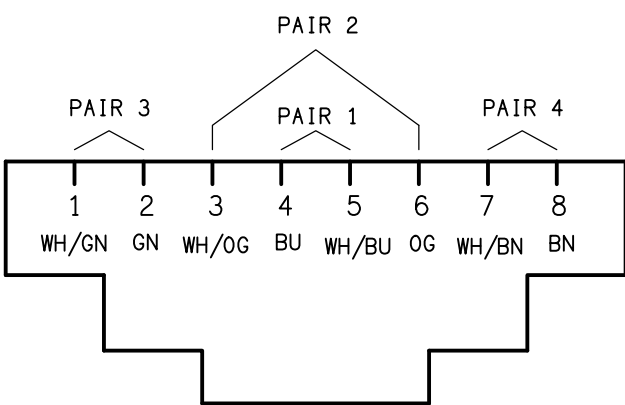
Ta - ADJUSTABLE 0-3 HOUR TIMED RELAY.

Tb - 15 MINUTE RUN-ON TIMER TO OPERATE UPON THE RETURN OF MAINS POWER.

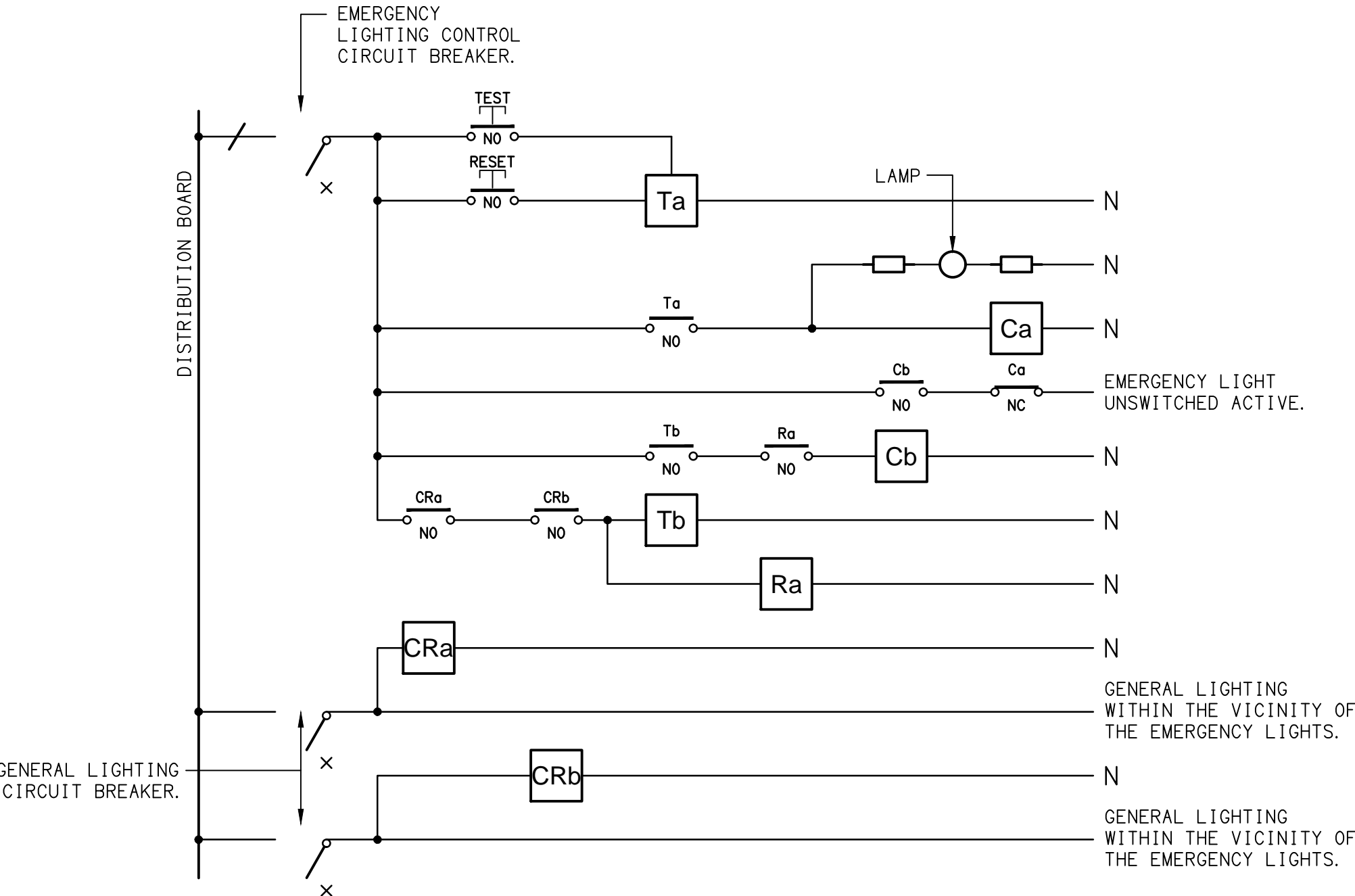
Cx - CONTACTOR x.

CRx - CONTROL RELAY x.

Rx - RELAY x.



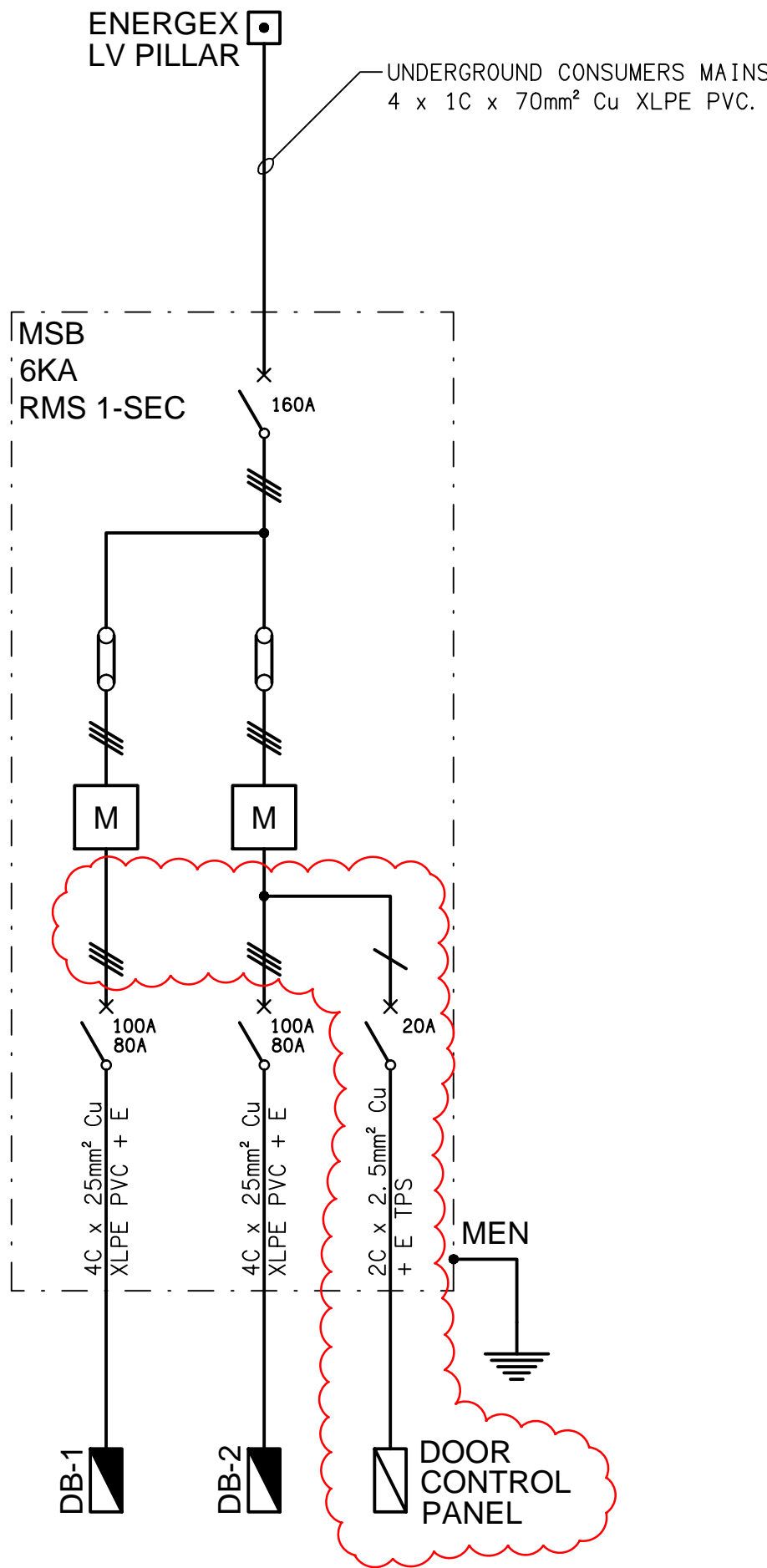
SCHEMATIC
RJ45 PINOUT CONFIGURATION
NOT TO SCALE



SCHEMATIC
EMERGENCY LIGHTING
NOT TO SCALE

NOTES

1. THE EMERGENCY LIGHT UNSWITCHED ACTIVE / GENERAL LIGHTING SWITCHED ACTIVE CIRCUIT ARRANGEMENT AND CONTROL IS TYPICAL FOR ALL CIRCUITS SUPPLYING EMERGENCY LIGHTS.
2. PROVIDE ADDITIONAL CONTROL RELAYS (CRx) CONFIGURED AS PER CRa AND CRb FOR ALL ADDITIONAL LIGHTING CIRCUITS THAT SUPPLY LIGHTS IN THE VICINITY OF THE EMERGENCY LIGHTS.



SCHEMATIC
POWER CONFIGURATION
NOT TO SCALE

ELECTRICAL DESIGN GROUP BRISBANE
PTY LTD
ACN 092 710 793
TRADING AS:
ELECTRICAL DESIGN GROUP

THE COPYRIGHT OF THIS DRAWING
REMAINS THE PROPERTY OF THE
ELECTRICAL DESIGN GROUP.
USE FIGURED DIMENSIONS
IN PREFERENCE TO SCALE.
ALL DIMENSIONS TO BE
VERIFIED ONSITE.

ELECTRICAL DESIGN GROUP
ELECTRICAL BUILDING SERVICES CONSULTANTS
BRISBANE GOLD COAST

P.O.Box 15, Sherwood Q.4075
Phone: (07) 3278 4375
Email: brisbane@edg.net.au
Web: www.edg.net.au

PROJECT:
BURNSIDE ROAD, GILBERTON

LOT 4 BURNSIDE ROAD, GILBERTON, QUEENSLAND

| C | CONSTRUCTION | 17/04/2024 |
|------|--------------|------------|
| REV. | DESCRIPTION: | DATE: |

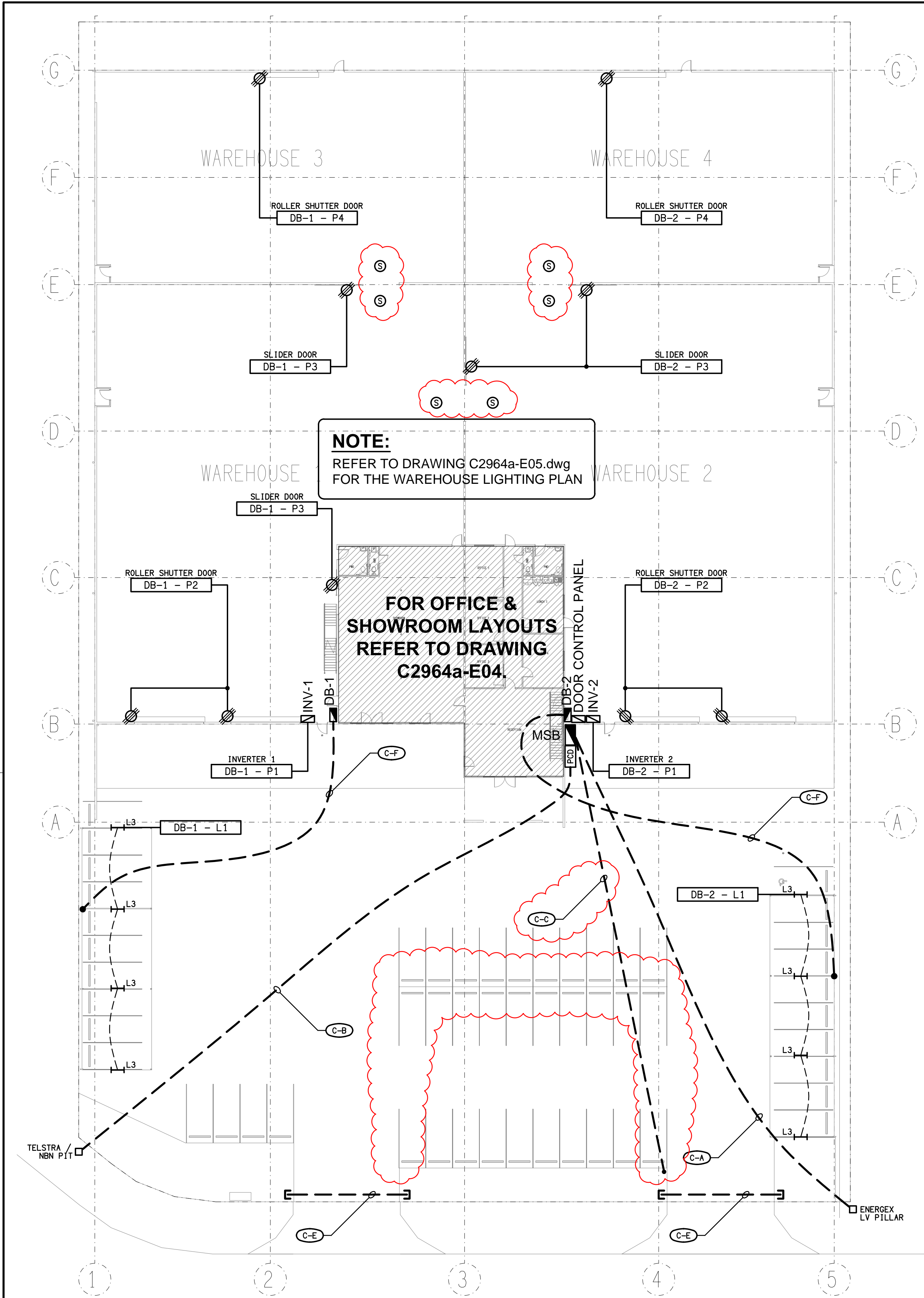
DRAWING:
ELECTRICAL SERVICES
SCHEMATICS & DETAILS

SCALE:
NOT TO SCALE AT A1

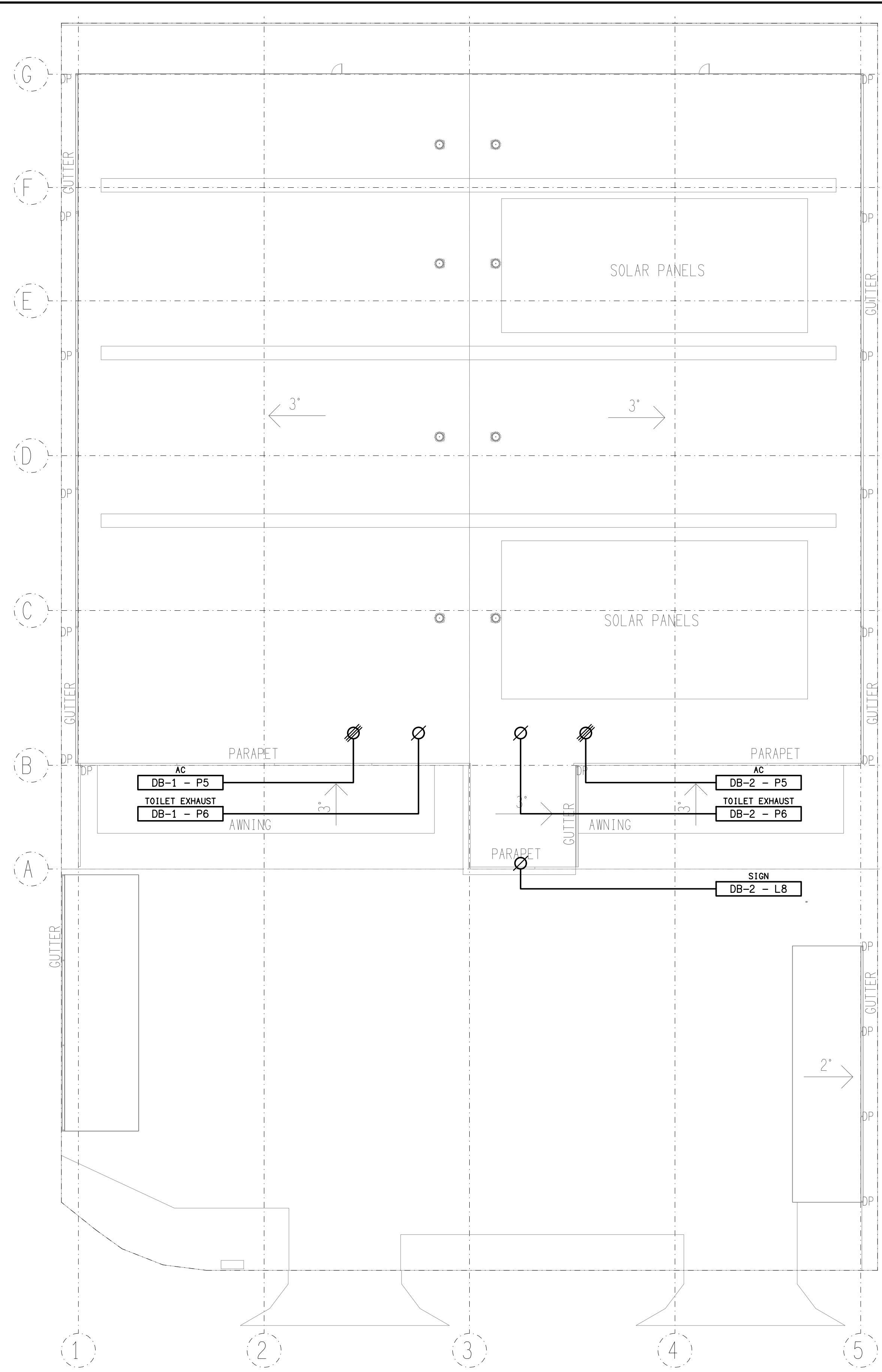
PROJECT NO:
C2964a

DRAWING NO:
E02

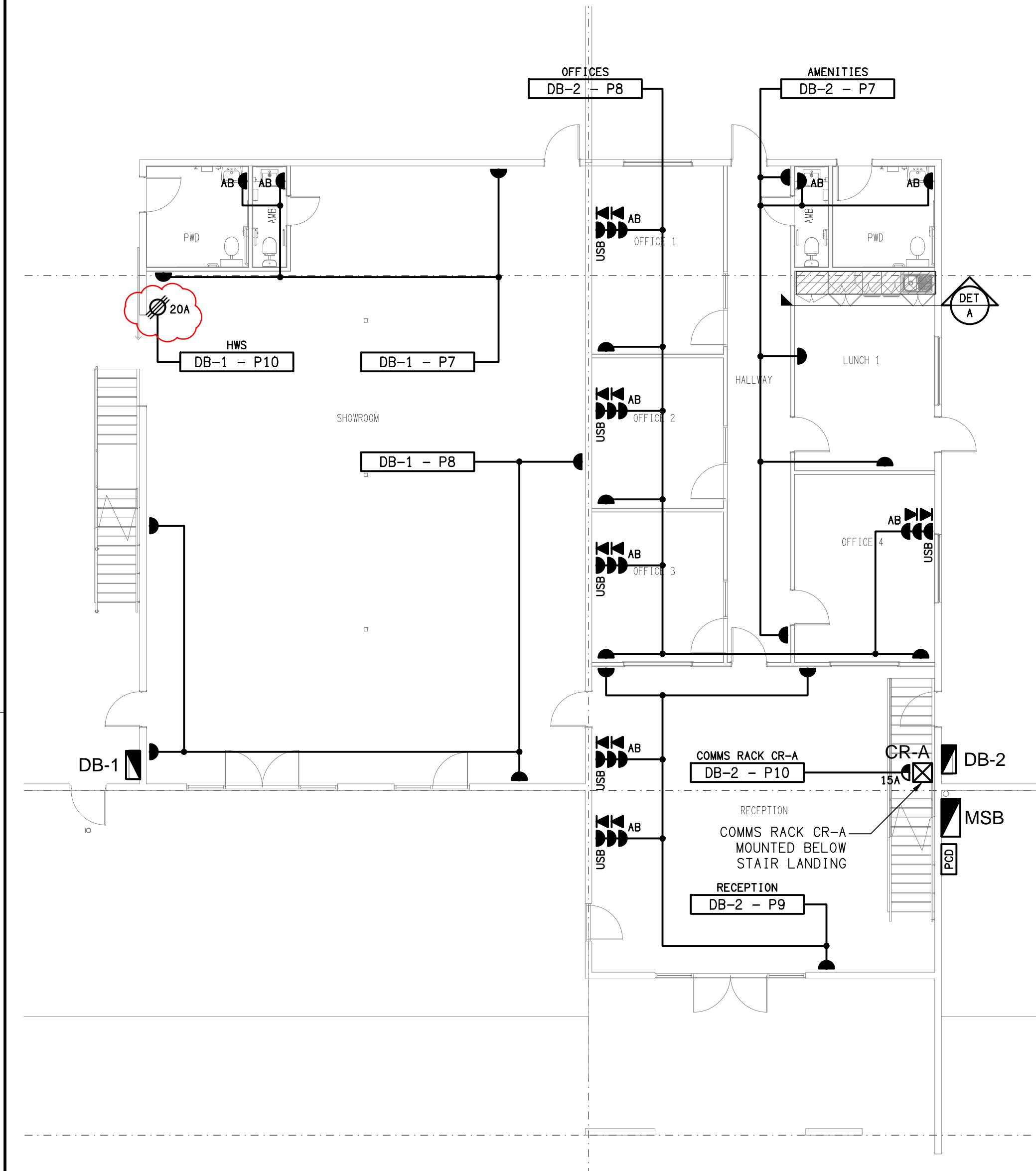
REVISION:
C



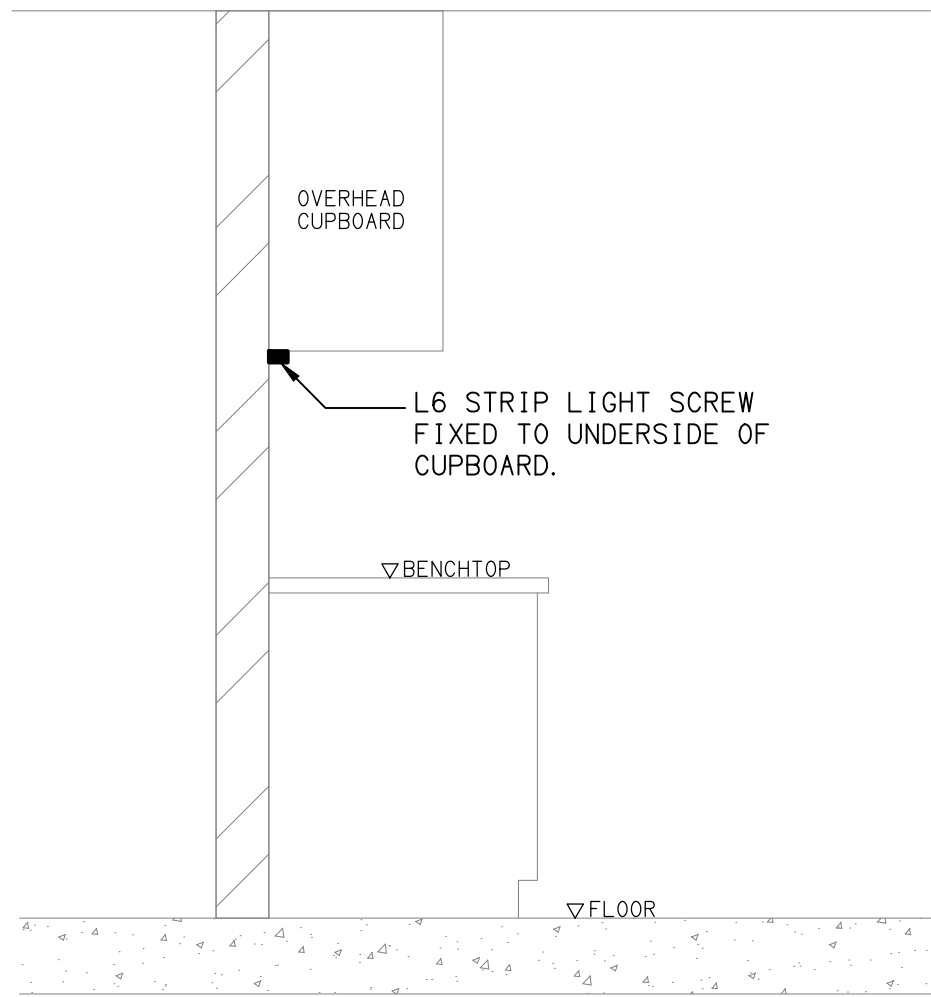
SITE PLAN
WAREHOUSE 1 & 2
SCALE 1: 250



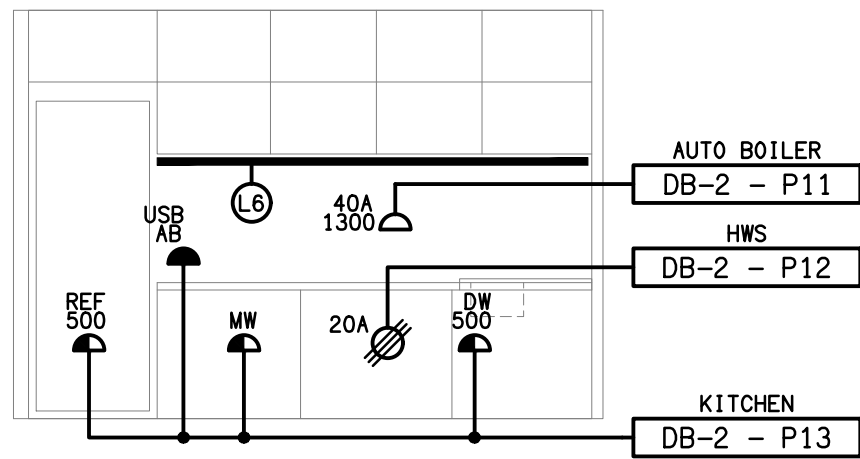
ROOF PLAN
WAREHOUSE 1 & 2
SCALE 1: 250



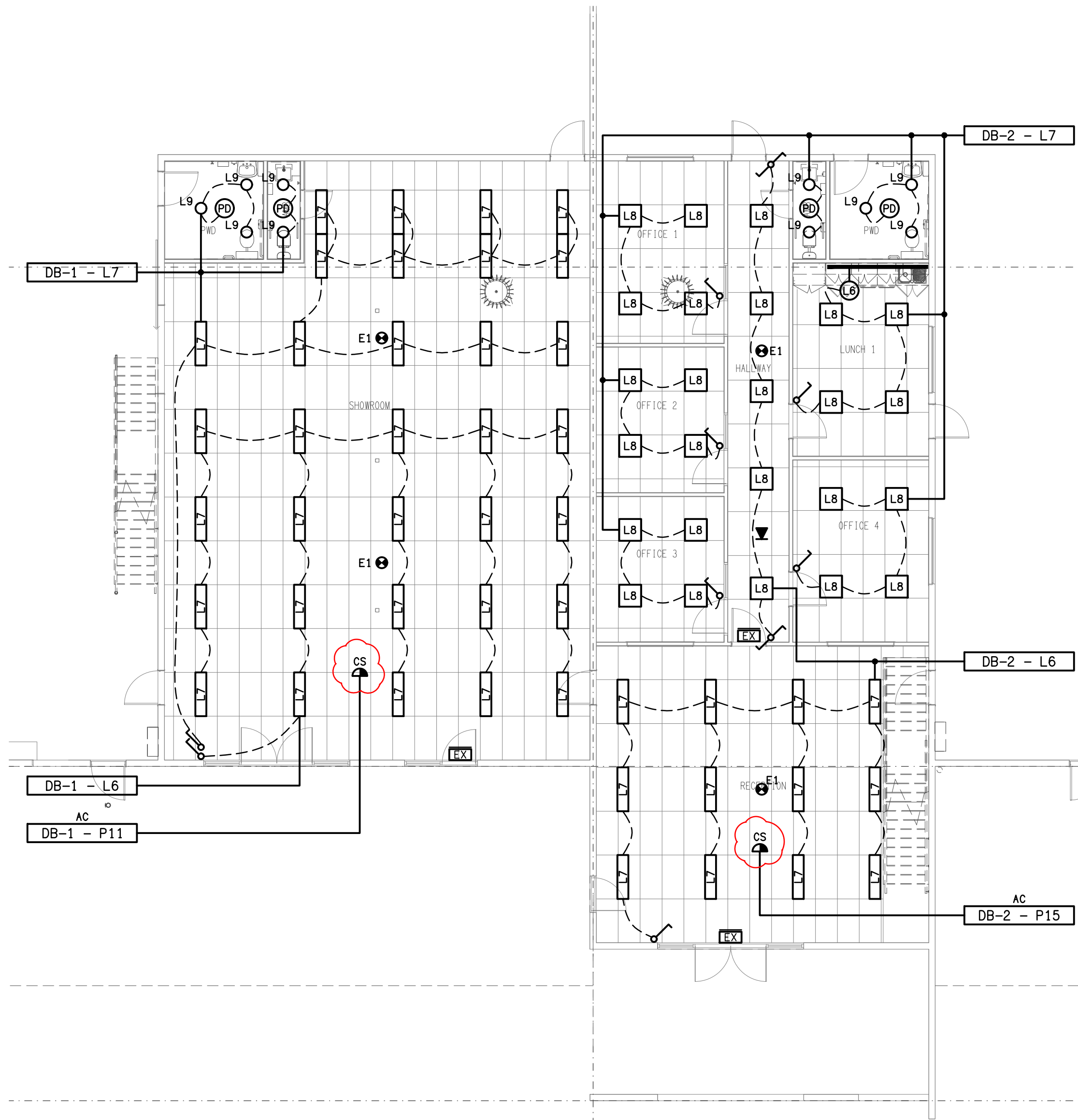
GROUND LEVEL
FLOOR PLAN
SCALE 1: 100



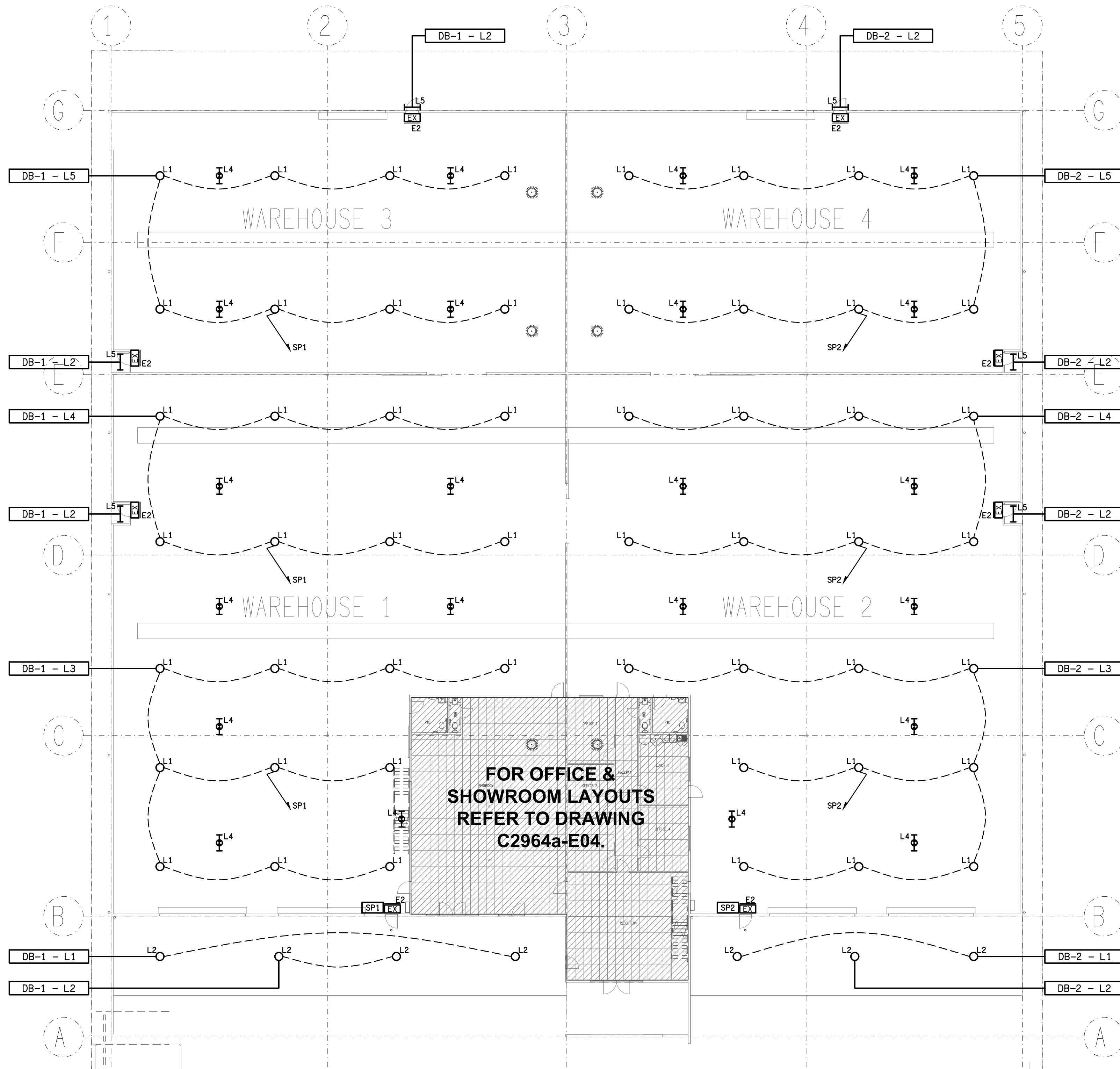
DETAIL B
TYPICAL "L6" STRIP LIGHT MOUNTING
NOT TO SCALE



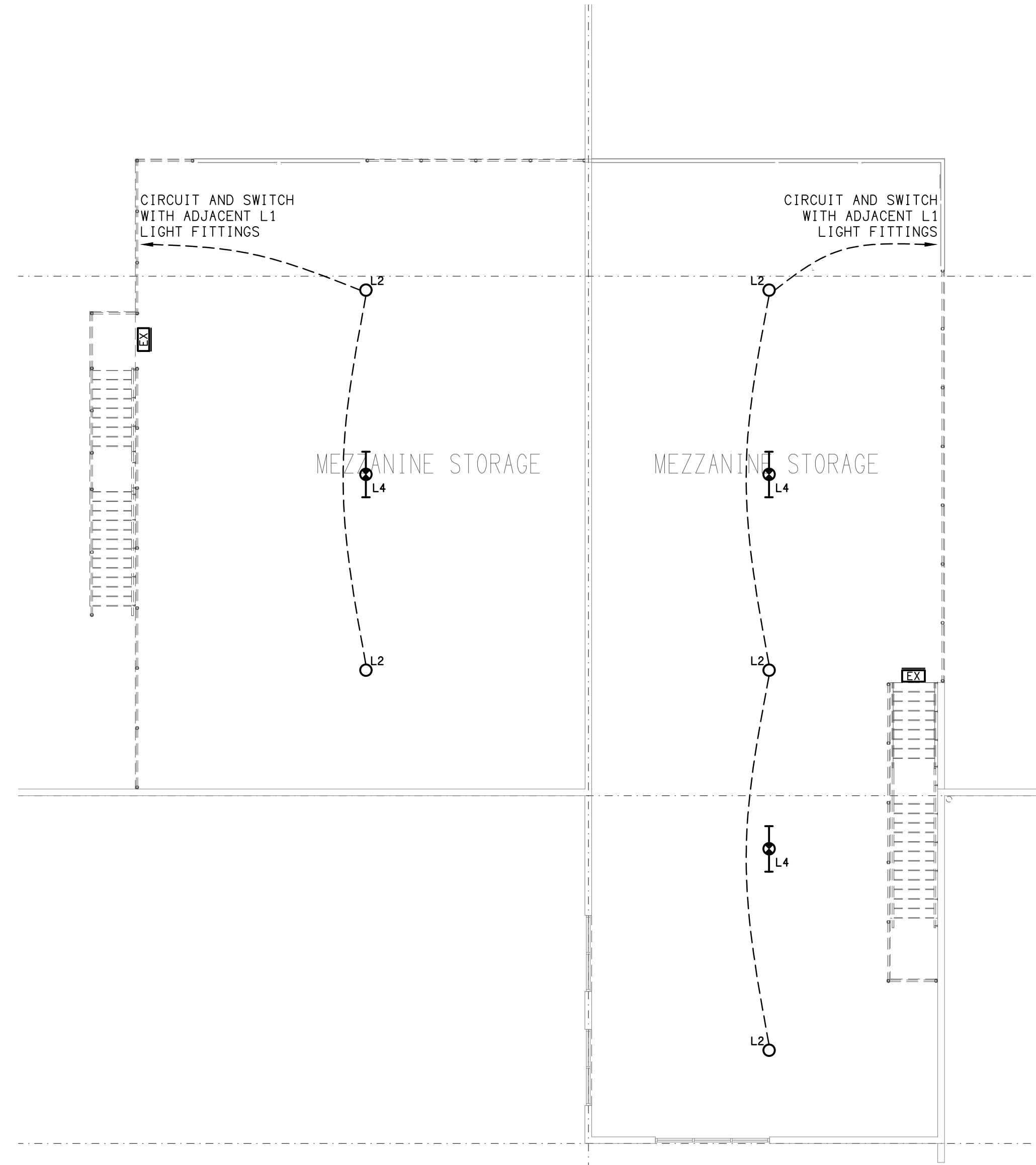
DETAIL A
LUNCH 1 KITCHENETTE ELEVATION
NOT TO SCALE



GROUND LEVEL
REFLECTED CEILING PLAN
SCALE 1: 100



GROUND LEVEL
REFLECTED CEILING PLAN
SCALE 1: 200



LEVEL 1
REFLECTED CEILING PLAN
SCALE 1: 100