



ELECTRICAL DESIGN GROUP

ELECTRICAL BUILDING SERVICES CONSULTANTS

P.O. Box 15, SHERWOOD Q. 4075

Phone: (07) 3278 4375

Website: www.edg.net.au Email: brisbane@edg.net.au

C2933a - ZILLMERE SPORTS CLUB - GAMING EXTENSION
ELECTRICAL SERVICES CONTRACT DOCUMENT SCHEDULE
REVISION D - 10 APRIL 2024

C2933a-0001(D).xls

ISSUING INFORMATION				DATE OF ISSUE							
	DAY	18	28	05	10						
	MONTH	08	02	03	04						
	YEAR	23	24	24	24						
	REASON FOR ISSUE	T	T	T	C						
A = APPROVAL C = CONSTRUCTION N = COORDINATION P = PRELIMINARY T = TENDER											

DISTRIBUTION				NUMBER OF COPIES							
WWW.EDG.NET.AU				1E	1E	1E	1E				
BSPN ARCHITECTURE				1E	1E	1E	1E				
P = PRINT T = TRACING D = DISC E = EMAIL F = FAX											

DOCUMENTS		REVISION									
C2933a-E01.dwg	LEGEND, SCHEMATICS & DETAILS	A	B		C						
C2933a-E02.dwg	NOTES	A	B		C						
C2933a-E03.dwg	FLOOR PLAN	A	B		C						
C2933a-E04.dwg	REFLECTED CEILING PLAN	A	B		C						
C2933a-E05.dwg	GAMING ROOM FIBRE PLAN	A	B		C						
C2933a-0001.xls	CONTRACT DOCUMENT SCHEDULE	A	B	C	D						
C2933a-0002.xls	EQUIPMENT SCHEDULE	A	B	C							
C2933a-0004.xls	LIGHTING CONTROL SCHEDULE	A	B								
C2933a-0005.xls	DISTRIBUTION BOARD DB-A SCHEDULE	A	B								
C2933a-0001.zip	FITTING & OUTLET DATASHEETS		A								



ELECTRICAL DESIGN GROUP

ELECTRICAL BUILDING SERVICES CONSULTANTS

P.O. Box 15, SHERWOOD Q. 4075

Phone: (07) 3278 4375 Fax: (07) 3716 0222

Web Site: www.edg.net.au Email: brisbane@edg.net.au

C2933a - ZILLMERE SPORTS CLUB - GAMING EXTENSION

C2933a-0002(C).xls

ELECTRICAL EQUIPMENT SCHEDULE

REVISION C - 05 MARCH 2024

THE LIGHT FITTING SUPPLIER CONTACT DETAILS MAY BE AVAILABLE ON THE EDG WEBSITE VIA THE FOLLOWING LINK
www.edg.net.au/Links/Lighting.htm

TYPE	LAMPS	DESCRIPTION	COLOUR / ACCESSORY	CATALOGUE No	REV
L1	240VOLT 400LM +/- 10% 3000K LED	AMENITY 150DIA PENDANT TO BE SUSPENDED WITH THE CORD HEIGHT ADJUSTED AS DIRECTED BY THE ARCHITECT ON SITE	SEMI BLACK TRANSPARENT GOLD CORD	LIGHTING COLLECTIVE SCANDINAVIAN HANGING LED GLOBW MOON PENDANT MEDIUM	C
L2	240VOLT 200LM +/- 10% 3000K LED	AMENITY ENTRY 120 DIA WALL LIGHT ALLOW TO INSTALL AS PER THE ARCHITECTURAL ELEVATION	BRASS BODY OPAL GLASS	ABOUTSPACE CATERPILLAR WALL A LED INDOOR WALL LIGHT	C
L3	240VOLT 800LM +/- 10% 3000K LED	RECEPTION PENDANT TO BE SUSPENDED AS DIRECTED BY THE ARCHITECT ON SITE	WHITE	ABOUTSPACE CAROLINE PENDANT	C
L4	240VOLT 400LM +/- 10% 3000K LED	CASHIER WALL LIGHT 200 DIA ALLOW TO INSTALL AS PER THE ARCHITECTURAL ELEVATION	SLIK BRASS	ABOUTSPACE GOSSA WALL LIGHT	C
L5	2 X 6W 3000K LED	ENTRY IP65 WALL LIGHT 110 DIA X 200 HIGH ALLOW TO INSTALL AS PER THE ARCHITECTURAL ELEVATION	CONCRETE / SANDSTONE	ABOUT SPACE MONOLITH	C
L6	240VOLT 200LM +/- 10% 3000K LED	AMENITY 125 DIA PENDANT TO BE SUSPENDED WITH THE CORD HEIGHT ADJUSTED AS DIRECTED BY THE ARCHITECT ON SITE	SEMI BLACK TRANSPARENT GOLD CORD	LIGHTING COLLECTIVE SCANDINAVIAN HANGING LED GLOBW MOON PENDANT SMALL	C
L7	240VOLT 400LM +/- 10% 3000K LED	CASHIER PENDANT 250 DIA X 405 HIGH TO BE SUSPENDED AS DIRECTED BY THE ARCHITECT ON SITE	CHAMPAGNE BRASS DROP	ABOUT SPACE CAMILLA GLASS RIBBED PENDANT	C
L8A	240VOLT 400LM +/- 10% 3000K LED	SPORTS BAR WALL PENDANT 300DIA 500 HIGH ALLOW TO INSTALL AS PER THE ARCHITECTURAL DETAIL	WHITE FABRIC	ABOUT SPACE SIRIUS PENDANT	C
L8B	240VOLT 400LM +/- 10% 3000K LED	SPORTS BAR WALL PENDANT 350DIA 500 HIGH ALLOW TO INSTALL AS PER THE ARCHITECTURAL DETAIL	WHITE FABRIC	ABOUT SPACE NEPTUNE PENDANT	C
L9	400 LM +/- 10% 3000K LED	130 DIA GAMING PENDANT C/W REMOTE DALI DIMMABLE DRIVER PER FIVE FITTINGS TO BE SUSPENDED AS DIRECTED BY THE ARCHITECT ON SITE	BRASS BODY AND DROP	ABOUT SPACE AMENDO MINI	C
L10	400 LM +/- 10% 3000K LED	130 DIA GAMING PERFORATED PENDANT C/W REMOTE DALI DIMMABLE DRIVER PER FIVE FITTINGS TO BE SUSPENDED AS DIRECTED BY THE ARCHITECT ON SITE	PERFORATED BRASS BODY AND DROP	ABOUT SPACE AMENDO MINI PERFORATED	C



ELECTRICAL DESIGN GROUP

ELECTRICAL BUILDING SERVICES CONSULTANTS

P.O. Box 15, SHERWOOD Q. 4075

Phone: (07) 3278 4375 Fax: (07) 3716 0222

Web Site: www.edg.net.au Email: brisbane@edg.net.au

C2933a - ZILLMERE SPORTS CLUB - GAMING EXTENSION					C2933a-0002(C).xls
ELECTRICAL EQUIPMENT SCHEDULE					
REVISION C - 05 MARCH 2024					
THE LIGHT FITTING SUPPLIER CONTACT DETAILS MAY BE AVAILABLE ON THE EDG WEBSITE VIA THE FOLLOWING LINK www.edg.net.au/Links/Lighting.htm					
TYPE	LAMPS	DESCRIPTION	COLOUR / ACCESSORY	CATALOGUE No	REV
L11	34W 4000K LED	600 X 600 LAY IN FLAT PLATE LED FITTING C/W REMOTE DRIVER MOUNTED IN A FLUSH RECESSED PB MOUNTING KIT	WHITE TRIM	GAMMA ILLUMINATION AXIS 1548-4K-34W C/W FLUSH RECESS PB KIT	A
L12	13W 3000K LED	AMENITY ENTRY RECESSED DOWNLIGHT C/W REMOTE DALI DIMMABLE DRIVER	WHITE	GAMMA ILLUMINATION MYLO 1004-3K-13W	A
L13	28W 3000K LED	GAMING RECESSED DOWNLIGHT C/W REMOTE DALI DIMMABLE DRIVER	WHITE	GAMMA ILLUMINATION CORBAL 1418-3K-28W	A
L14	240VOLT 400LM +/- 10% 3000K LED	RECEPTION WALL LIGHT 480 HIGH X 245 DEEP WALL MOUNTED AS PER THE ARCHITECTURAL ELEVATION	BRASS BODY OPAL GLASS	ABOUT SPACE DANTE LED 120 DIA GLASS	C
L15	8W 3000K LED	AMENITY RECESSED DOWNLIGHT C/W REMOTE DRIVER	WHITE	GAMMA ILLUMINATION MYLO 1004-3K-8W	A
L16	13W 3000K LED	GENERAL RECESSED DOWNLIGHT C/W REMOTE DALI DIMMABLE DRIVER	WHITE	GAMMA ILLUMINATION CORBAL 1410-3K-13W	A
L17	22W 3000K LED	RECEPTION RECESSED DOWNLIGHT C/W REMOTE DALI DIMMABLE DRIVER	WHITE	GAMMA ILLUMINATION COBALT 1402-3K-22W	A
L18	28W 3000K LED	ENTRY RECESSED DOWNLIGHT C/W REMOTE DALI DIMMABLE DRIVER	WHITE	GAMMA ILLUMINATION COBALT 1442-3K-28W	A
L19	WARM WHITE LED	TWO HORIZONTAL LED STRIPS WITHIN AN FLUSH RECESSED ALUMINIUM EXTRUSION MOUNTED WITHIN THE REAR CASHIER SHELVEING AS PER THE ARCHITECTURAL DETAIL PROVIDE THE STRIP WITH A REMOTE DEDICATED 240-12V POWER SUPPLY AND A DALI DIMMABLE INTERFACE UNIT	NATURAL	NEON PRODUCTS AUSTRALIA LF-DFB-WW-300-12 + PR-LIN172153-F	A
L20	NO LONGER REQUIRED				B
L21	12W/M 3000K LED	FLEXIBLE LED ROPE FLEX SCREW FIXED RECESSED INTO THE BAR SKIRTING AS PER THE ARCHITECTURAL DETAIL PROVIDE THE L21 STRIP WITH A COMMON REMOTE 240-24V POWER SUPPLY AND A DALI DIMMABLE INTERFACE UNIT	WHITE	NPA L-NF-GLOW-WW + POWER SUPPLY & DALI CONTROLLER	A



ELECTRICAL DESIGN GROUP

ELECTRICAL BUILDING SERVICES CONSULTANTS

P.O. Box 15, SHERWOOD Q. 4075

Phone: (07) 3278 4375 Fax: (07) 3716 0222

Web Site: www.edg.net.au Email: brisbane@edg.net.au

C2933a - ZILLMERE SPORTS CLUB - GAMING EXTENSION					C2933a-0002(C).xls
ELECTRICAL EQUIPMENT SCHEDULE					
REVISION C - 05 MARCH 2024					
THE LIGHT FITTING SUPPLIER CONTACT DETAILS MAY BE AVAILABLE ON THE EDG WEBSITE VIA THE FOLLOWING LINK www.edg.net.au/Links/Lighting.htm					
TYPE	LAMPS	DESCRIPTION	COLOUR / ACCESSORY	CATALOGUE No	REV
L22	45W 4000K LED	EXTERNAL WALL MOUNTED FLOOD LIGHT C/E INTEGRAL DRIVER	SILVER	GAMMA ILLUMINATION 1341-4K-45W	A
L23	WARM WHITE LED	TWO HORIZONTAL AND TWO VERTICAL LED STRIPS TO SURROUND THE MIRROR AS PER THE L23 ELEVATION RUN THE STRIP WITHIN AN FLUSH RECESSED ALUMINIUM EXTRUSION MOUNTED CONCEALED BEHIND THE MIRROR AS PER THE ARCHITECTURAL DETAIL PROVIDE THE STRIP WITH A REMOTE DEDICATED 240-12V POWER SUPPLY	NATURAL	NEON PRODUCTS AUSTRALIA LF-DFB-WW-300-12 + PR-LIN172153-F	B
E1	LED	EMERGENCY LIGHT: RECESSED NON-MAINTAINED EMERGENCY LIGHT. AS2293 CLASSIFICATION C0-D63 - C90-D63.	WHITE	CLEVERTRONICS LLIFE	A
EX	LED	EXIT LIGHT: MAINTAINED 24M VIEWING DISTANCE EXIT LIGHT C/W DIFFUSERS & DIRECTIONAL ARROWS AS SHOWN. CEILING SURFACE MOUNT OR WALL MOUNT BETWEEN 2100mm & 2700mm AFFL IF THERE IS NO VERTICAL SURFACE TO MOUNT THE FITTING ON WITHIN THIS RANGE CONFIRM THE MOUNTING HEIGHT WITH THE ENGINEER. AS2293 CLASSIFICATION C0-D1.25- C90-D2	BLACK	CLEVERTRONICS LUBPRO-SM	A
ONE-WAY LIGHT SWITCH		ONE-WAY LIGHT SWITCH C/W CIRCUIT IDENTIFICATION ON THE FACEPLATE BEHIND THE SURROUND MOUNTED AT 1000mm AFFL UNLESS NOTED OTHERWISE.	WHITE	CLIPSAL C2000 SERIES 30USM	A
LIGHTING CONTROL SWITCH PANEL (SPx)		6-BUTTON PROGRAMMABLE SWITCH PANEL C/W CENTRAL LCD DISPLAY MOUNTED AT 1000mm AFFL UNLESS NOTED OTHERWISE.	ALUMINIUM	DYNALITE ANTUMBRA DISPLAY	A
HAND DRYER CONNECTION (HD)		SINGLE POWER OUTLET C/W CIRCUIT IDENTIFICATION ON THE FACEPLATE BEHIND THE SURROUND FOR THE HAND DRYER MOUNT THE GPO AS PER THE ARCHITECTURAL DETAIL	WHITE UNLESS NOTED AS BLACK (BK)	CLIPSAL C2000 SERIES	A
SINGLE POWER OUTLET		SINGLE POWER OUTLET C/W CIRCUIT IDENTIFICATION ON THE FACEPLATE BEHIND THE SURROUND MOUNT AT 300mm AFFL U.N.O. RATING 10A U.N.O.	WHITE UNLESS NOTED AS BLACK (BK)	CLIPSAL C2000 SERIES	A
SINGLE POWER OUTLET AUTO DOOR (AD)		SINGLE POWER OUTLET C/W CIRCUIT IDENTIFICATION ON THE FACEPLATE BEHIND THE SURROUND MOUNTED CONCEALED WITHIN THE AUTO DOOR MULLION. RATING 10A U.N.O.	WHITE	CLIPSAL C2000 SERIES	A
DOUBLE POWER OUTLET		DOUBLE POWER OUTLET C/W CIRCUIT IDENTIFICATION ON THE FACEPLATE BEHIND THE SURROUND MOUNT AT 300mm AFFL U.N.O. RATING 10A U.N.O.	WHITE UNLESS NOTED AS BLACK (BK)	CLIPSAL C2000 SERIES	A



ELECTRICAL DESIGN GROUP

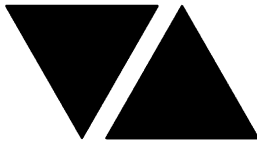
ELECTRICAL BUILDING SERVICES CONSULTANTS

P.O. Box 15, SHERWOOD Q. 4075

Phone: (07) 3278 4375 Fax: (07) 3716 0222

Web Site: www.edg.net.au Email: brisbane@edg.net.au

C2933a - ZILLMERE SPORTS CLUB - GAMING EXTENSION					C2933a-0002(C).xls
ELECTRICAL EQUIPMENT SCHEDULE					
REVISION C - 05 MARCH 2024					
THE LIGHT FITTING SUPPLIER CONTACT DETAILS MAY BE AVAILABLE ON THE EDG WEBSITE VIA THE FOLLOWING LINK www.edg.net.au/Links/Lighting.htm					
TYPE	LAMPS	DESCRIPTION	COLOUR / ACCESSORY	CATALOGUE No	REV
SINGLE-PHASE ISOLATOR		SINGLE-PHASE WEATHERPROOF ISOLATOR. MOUNT AT 1350mm AFFL U.N.O. RATING 20A U.N.O. CONNECT TO EQUIPMENT VIA FLEXIBLE CONDUIT.	-	CLIPSAL WHT20	A
THREE-PHASE ISOLATOR		THREE-PHASE WEATHERPROOF ISOLATOR. MOUNT AT 1350mm AFFL U.N.O. RATING 20A U.N.O. CONNECT TO EQUIPMENT VIA FLEXIBLE CONDUIT.	-	CLIPSAL WHT35	A
DB-A		DISTRIBUTION BOARD DB-A AS PER THE DB-A SCHEDULE. COLOUR GREY HINGED ESCUTCHEON C/W 1/4 TURN LATCHES AND D HANDLES. PROVIDE A SHOP DRAWING OF DB-A FOR APPROVAL. AS PER THE NOTES DB-A IS TO BE SUPPLIED FROM A NEW 160 AMP MCCB IN THE MSB VIA A NEW 4C 70mm SUBMAIN.			A
DB-B - P1		PROVIDE CIRCUIT DB-B - P1 A NEW 20 AMP SINGLE PHASE 2.5MM RCBO PROTECTED CIRCUIT FROM THE EXISTING MSB DISTRIBUTION BORD (DB-B)			A
DB-B		EXISTING MSB DISTRIBUTION BORD (DB-B)			A
MSB		EXISTING MSB TO BE UPGRADED TO ACCOMMODATE THE ADDITIONAL 160 AMP MCCB TO SUPPLY DB-A. UPDATE THE MSB LABELS AT PRACTICAL COMPLETION			A
COMMUNICATIONS RACK (CR-1)		EXISTING COMMUNICATIONS RACK CR-1 PROVIDE THE RACK WITH THE REQUIRED CAT 6 PATCH PANELS TO FACILITATE THE ADDITIONAL COMMUNICATIONS OUTLETS.			A
COMMUNICATIONS RACK (CR-2)		EXISTING COMMUNICATIONS RACK CR-2 PROVIDE THE RACK WITH THE REQUIRED CAT 6 PATCH PANELS TO FACILITATE THE ADDITIONAL GAMING OUTLETS.			A
COMMUNICATIONS OUTLET		RJ45 CAT-6 COMMUNICATIONS OUTLET, CABLED BACK TO CAT 6 PATCH PANELS IN RACK CR-1 VIA 4-PAIR CAT-6 UTP CABLE. MOUNT UP TO 3 RJ45 OUTLETS PER MULTI-GANG FACEPLATE WITH SEPARATE PERMANENT LABELLING FOR EACH OUTLET. MOUNT AT 300 AFFL UNLESS NOTED OTHERWISE	WHITE UNLESS NOTED AS BLACK (BK)	CLIPSAL C2000 SERIES	A
CAT 6 GAMING OUTLET		RJ45 CAT-6 COMMUNICATIONS OUTLET, CABLED BACK TO CAT 6 DEDICATED GAMING PATCH PANELS IN RACK CR-2 VIA 4-PAIR CAT-6 UTP CABLE. MOUNT UP TO 3 RJ45 OUTLETS PER MULTI-GANG FACEPLATE WITH SEPARATE PERMANENT LABELLING FOR EACH OUTLET. MOUNT AT 300 AFFL UNLESS NOTED OTHERWISE	WHITE UNLESS NOTED AS BLACK (BK)	CLIPSAL C2000 SERIES	A
GAMING FIBRE (GF)		INSTALL DUPLEX FIBRE OPTIC CABLE BETWEEN THE POKER MACHINE BASES AND FROM THE POKER MACHINE BASES BACK TO RACK CR-2 AS INDICATED. THE DUPLEX FIBRE OPTIC CABLE WILL BE SUPPLIED AND TERMINATED BY OTHERS.			A



ELECTRICAL DESIGN GROUP

ELECTRICAL BUILDING SERVICES CONSULTANTS

P.O. Box 15, SHERWOOD Q. 4075

Phone: (07) 3278 4375 Fax: (07) 3716 0222

Web Site: www.edg.net.au Email: brisbane@edg.net.au

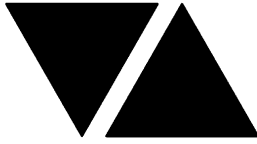
C2933a - ZILLMERE SPORTS CLUB - GAMING EXTENSION

C2933a-0004(B).xls

LIGHTING CONTROL SCHEDULE

REVISION B - 28 FEBRUARY 2024

MISCELLANEOUS EQUIPMENT					REV
ITEM	DESCRIPTION				A
SP1	AS DETAILED IN THE EQUIPMENT SCHEDULE 6-BUTTON PROGRAMMABLE SWITCH PANEL C/W CENTRAL LCD DISPLAY DYNALITE ANTUMBRA DISPLAY ALUMINIUM				A
SP2	AS DETAILED IN THE EQUIPMENT SCHEDULE 6-BUTTON PROGRAMMABLE SWITCH PANEL C/W CENTRAL LCD DISPLAY DYNALITE ANTUMBRA DISPLAY ALUMINIUM				A
PE CELL	PROGRAMMABLE PE CELL DUS 90CS CONFIRM THE LOCATION ON SITE WITH THE ARCHITECT				A
TIME CLOCK	PROGRAMMABLE TIME CLOCK ENVISION GATEWAY PDEG C/W INTERNET ACCESS LOCATE DB-B				A
CONTROL MODULE 1					A
TYPE:		DYNALITE DDRC1220FR-GL		A	
DESCRIPTION		12 CH SWITCHING CONTROLLER			A
LOCATION		DIN RAIL MOUNTED WITHIN DB-A			A
BUS:		A			A
CHANNEL	CONTROL	DESCRIPTION			A
		LOCATION	CIRCUIT	USE	A
1	SWITCH	EXTERNAL	DB-A - L1	L22 LIGHTS	A
2	SWITCH	EXTERNAL	DB-A - L1	SIGN	A
3	SPARE	EXTERNAL	DB-A - L1	SIGN	A
4	SPARE	ENTRY	DB-A - L2	L5 LIGHTS	A
5	SWITCH	RECEPTION	DB-A - L12	L14 LIGHTS	A
6	SWITCH	RECEPTION	DB-A - L2	L3 LIGHTS	A
7	SWITCH	SPORTS BAR	DB-A - L2	L8 LIGHTS	A
8	SWITCH	AMENITY	DB-A - L3	L2 LIGHTS	A
9	SWITCH	CASHIER	DB-A - L3	L4 LIGHTS	A
10	SWITCH	ENTRY	DB-A - L3	L3 LIGHTS	A
11	SWITCH	CASHIER	DB-A - L3	L7 LIGHTS	A
12	SWITCH	GAMING	DB-A - P19 TO P24	SIGNAGE	A
CONTROL MODULE 2					A
TYPE:		DYNALITE DDBC1200		A	
DESCRIPTION		12CH BOARD CAST DALI CONTROLLER			A
LOCATION		DIN RAIL MOUNTED WITHIN DB-A			A
BUS:		A			A
CHANNEL	CONTROL	DESCRIPTION			A
		LOCATION	CIRCUIT	USE	A
13	DALI DIM	ENTRY	DB-A - L4	L18 LIGHTS	A
14	DALI DIM	ENTRY	DB-A - L4	L18 LIGHTS	A
15	DALI DIM	ENTRY	DB-A - L4	L17 LIGHTS	A
16	DALI DIM	ENTRY	DB-A - L5	L17 LIGHTS	A
17	DALI DIM	ENTRY	DB-A - L5	L17 LIGHTS	A
18	DALI DIM	RECEPTION	DB-A - L5	L17 LIGHTS	A
19	DALI DIM	RECEPTION	DB-A - L6	L16 LIGHTS	A
20	DALI DIM	GAMING	DB-A - L6	L13 LIGHTS	A
21	DALI DIM	GAMING	DB-A - L7	L12 LIGHTS	A
22	DALI DIM	GAMING	DB-A - L7	L13 LIGHTS	A
23	DALI DIM	GAMING	DB-A - L7	L13 LIGHTS	A
24	DALI DIM	CASHIER	DB-A - L7	L12 LIGHTS	A



ELECTRICAL DESIGN GROUP

ELECTRICAL BUILDING SERVICES CONSULTANTS

P.O. Box 15, SHERWOOD Q. 4075

Phone: (07) 3278 4375 Fax: (07) 3716 0222

Web Site: www.edg.net.au Email: brisbane@edg.net.au

C2933a - ZILLMERE SPORTS CLUB - GAMING EXTENSION

C2933a-0004(B).xls

LIGHTING CONTROL SCHEDULE

REVISION B - 28 FEBRUARY 2024

CONTROL MODULE 3					A
TYPE:		DYNALITE DDBC1200			A
DESCRIPTION		12CH BOARD CAST DALI CONTROLLER			A
LOCATION		DIN RAIL MOUNTED WITHIN DB-A			A
BUS:		A			A
CHANNEL	CONTROL	DESCRIPTION			A
		LOCATION	CIRCUIT	USE	A
25	DALI DIM	GAMING	DB-A - L7	L12 LIGHTS	A
26	DALI DIM	CASHIER	DB-A - L8	L19 LIGHTS	A
27	DALI DIM	CASHIER	DB-A - L8	L20 & L21 LIGHTS	A
28					B
29	DALI DIM	GAMING	DB-A - L9	L9 & L10 LIGHTS	A
30	DALI DIM	GAMING	DB-A - L10	L9 & L10 LIGHTS	A
31	DALI DIM	GAMING	DB-A - L10	L9 & L10 LIGHTS	A
32	DALI DIM	GAMING	DB-A - L11	L9 & L10 LIGHTS	A
33	DALI DIM	GAMING	DB-A - L11	L9 & L10 LIGHTS	A
34	DALI DIM	GAMING	DB-A - L7	L4 LIGHTS	B
35	DALI DIM	RECEPTION	DB-A - L2	L21 LIGHT	B
36	SPARE				A



ELECTRICAL DESIGN GROUP

ELECTRICAL BUILDING SERVICES CONSULTANTS

P.O. Box 15, SHERWOOD Q. 4075

Phone: (07) 3278 4375

Website: www.edg.net.au Email: brisbane@edg.net.au

C2933a - ZILLMERE SPORTS CLUB - GAMING EXTENSION

C2933a-0005(B).xls

DISTRIBUTION BOARD DB-A

REVISION B - 28 FEBRUARY 2024

							REV
FAULT CURRENT:		6KA		MAIN SWITCH:		250A NON AUTO LOAD BREAK	A
CHASSIS SIZE:		84 POLE		SUPPLIED FROM:		MSB	A
CHASSIS RATING:		250A		SUPPLY CABLE:		4C70	A
PHASES:		3					A
PROVIDE THE DB WITH A FULL WIDTH EMPTY DIN RAIL TO ACCOMMODATE FUTURE CONTACTORS AND CONTROLS IN ADDITION TO THE CONTROLS INCLUDING THE DYNALITE EQUIPMENT PROVIDED AS PART OF THE INITIAL WORKS. PROVIDE THE DB WITH AN AS2293 EMERGENCY LIGHTING CONTROL SYSTEM TO CONTROL THE ASSOCIATED EMERGENCY LIGHTS. PROVIDE THE DB WITH SURGE PROTECTION.							A
CIRC	PH	CIRCUIT BREAKER (amps)	CONTROL EQUIPMENT	CABLE SIZE (mm ²)	LOCATION	CIRCUIT USE	A
							A
P1	1	20	RCBO	2.5	GAMING	GAMING	A
P2	1	20	RCBO	2.5	GAMING	GAMING	A
P3	1	20	RCBO	2.5	GAMING	GAMING	A
P4	1	20	RCBO	2.5	GAMING	GAMING	A
P5	1	20	RCBO	2.5	GAMING	GAMING	A
P6	1	20	RCBO	2.5	GAMING	GAMING	A
P7	1	20	RCBO	2.5	GAMING	GAMING	A
P8	1	20	RCBO	2.5	GAMING	GAMING	A
P9	1	20	RCBO	2.5	GAMING	GAMING	A
P10	1	20	RCBO	2.5	GAMING	GAMING	A
P11	1	20	RCBO	2.5	GAMING	GAMING	A
P12	1	20	RCBO	2.5	GAMING	GAMING	A
P13	1	20	RCBO	2.5	GAMING	GAMING	A
P14	1	20	RCBO	2.5	GAMING	GAMING	A
P15	1	20	RCBO	2.5	GAMING	GAMING	A
P16	1	20	RCBO	2.5	GAMING	GAMING	A
P17	1	20	RCBO	2.5	GAMING	GAMING	A
P18	1	20	RCBO	2.5	GAMING	GAMING	A
P19	1	20	RCBO	2.5	GAMING	SIGNAGE	A
P20	1	20	RCBO	2.5	GAMING	SIGNAGE	A
P21	1	20	RCBO	2.5	GAMING	SIGNAGE	A
P22	1	20	RCBO	2.5	GAMING	SIGNAGE	A
P23	1	20	RCBO	2.5	GAMING	SIGNAGE	A
P24	1	20	RCBO	2.5	GAMING	SIGNAGE	A
P25	1	20	RCBO	2.5	GAMING	MODEM	A
P26	1	20	RCBO	2.5	GAMING	MODEM	A
P27	1	20	RCBO	2.5	GAMING	CRT	A
P28	1	20	RCBO	2.5	GAMING	CLEANING	A
P29	1	20	RCBO	2.5	GAMING	CLEANING	A
P30	1	20	RCBO	2.5	GAMING	CRT	A
P31	1	20	RCBO	2.5	GAMING	REF	A
P32	1	20	RCBO	2.5	GAMING	COFFEE	A
P33	1	20	RCBO	2.5	AMENITY	HD	A
P34	1	20	RCBO	2.5	ENTRY	AUTO DOOR	A
P35	1	20	RCBO	2.5	GAMING	CASHIER	A
P36	1	20	RCBO	2.5	GAMING	ATM	A
P37	1	20	RCBO	2.5	ENTRY	RECEPTION	A
P38	1	20	RCBO	2.5	ENTRY	ENTRY	A
P39	1	20	RCBO	2.5	ENTRY	SIGN IN KIOSK	A
P40	1	20	RCBO	2.5	ROOF	MAINT	A
P41	3	63		16.0	ROOF	AC	A
P42	1	20	RCBO	2.5	GAMING	KIOSK	A
P43	1	20	RCBO	2.5	GAMING	TV	B



ELECTRICAL DESIGN GROUP

ELECTRICAL BUILDING SERVICES CONSULTANTS

P.O. Box 15, SHERWOOD Q. 4075

Phone: (07) 3278 4375

Website: www.edg.net.au Email: brisbane@edg.net.au

C2933a - ZILLMERE SPORTS CLUB - GAMING EXTENSION


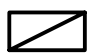











C2933a-0005(B).xls

DISTRIBUTION BOARD DB-A




REVISION B - 28 FEBRUARY 2024

							REV
FAULT CURRENT: 6KA							A
MAIN SWITCH: 250A NON AUTO LOAD BREAK							A
CHASSIS SIZE: 84 POLE							A
SUPPLIED FROM: MSB							A
CHASSIS RATING: 250A							A
SUPPLY CABLE: 4C70							A
PHASES: 3							A
PROVIDE THE DB WITH A FULL WIDTH EMPTY DIN RAIL TO ACCOMMODATE FUTURE CONTACTORS AND CONTROLS IN ADDITION TO THE CONTROLS INCLUDING THE DYNALITE EQUIPMENT PROVIDED AS PART OF THE INITIAL WORKS. PROVIDE THE DB WITH AN AS2293 EMERGENCY LIGHTING CONTROL SYSTEM TO CONTROL THE ASSOCIATED EMERGENCY LIGHTS. PROVIDE THE DB WITH SURGE PROTECTION.							A
CIRC	PH	CIRCUIT BREAKER (amps)	CONTROL EQUIPMENT	CABLE SIZE (mm ²)	LOCATION	CIRCUIT USE	A
							A
L1	1	20	RCBO	2.5	EXTERNAL	LIGHTS / SIGNS	A
L2	1	20	RCBO	2.5	ENTRY	LIGHTS	A
L3	1	20	RCBO	2.5	GAMING	LIGHTS	A
L4	1	20	RCBO	2.5	GAMING	LIGHTS	A
L5	1	20	RCBO	2.5	GAMING	LIGHTS	A
L6	1	20	RCBO	2.5	GAMING	LIGHTS	A
L7	1	20	RCBO	2.5	GAMING	LIGHTS	A
L8	1	20	RCBO	2.5	GAMING	LIGHTS	A
L9	1	20	RCBO	2.5	GAMING	LIGHTS	A
L10	1	20	RCBO	2.5	GAMING	LIGHTS	A
L11	1	20	RCBO	2.5	GAMING	LIGHTS	A
L12	1	20	RCBO	2.5	GAMING	LIGHTS	A


LEGEND

-  ELECTRICAL SERVICES SWITCHBOARD.
-  SWITCHBOARD / CONTROL PANEL NOT PROVIDED AS PART OF THE ELECTRICAL SUBCONTRACT.
-  SINGLE POWER OUTLET.
-  DOUBLE POWER OUTLET.
-  SPECIAL PURPOSE POWER OUTLET.
-  SINGLE PHASE ISOLATOR.
-  THREE PHASE ISOLATOR.
-  CONDUIT ROUTE.
-  GAMING FIBRE.
-  HAND DRYER CONNECTION.
-  ONE-WAY LIGHT SWITCH.
-  CIRCUIT LINE.
-  SWITCH LINE.
- DB-x - Py

POWER CIRCUIT DESIGNATION. DENOTES DB AND CIRCUIT.
- xx

LIGHTING CONTROL CHANNEL REFERENCE.
-  ELECTRICAL EQUIPMENT AS NOTED.
-  RJ45 COMMUNICATIONS OUTLET.
-  CAT-6 GAMING OUTLET.

LEGEND

-  REFER TO DETAIL NOTED FOR THE AREA SHOWN HATCHED. ADDITIONAL OUTLETS & FITTINGS MAY BE SHOWN ON DETAIL.
- E1

E1: GENERAL LED EMERGENCY LIGHT.
- EX

EX: EMERGENCY LED EXIT LIGHT.
- L1

L1: AMENITY LARGE DENDANT.
- L2

L2: AMENITY ENTRY WALL LIGHT.
- L3

L3: RECEPTION / ENTRY PENDANT.
- L4

L4: WALL LIGHT.
- L5

L5: ENTRY WALL LIGHT.
- L6

L6: AMENITY SMALL PENDANT.
- L7

L7: CASHIER PENDANT.
- L8

L8: SPORTS BAR WALL LIGHT.
- L9

L9: GAMING LARGE DALI DIMMABLE PENDANT.
- L10

L10: GAMING SMALL DALI DIMMABLE PENDANT..
- L11

L11: 600 X 600 PB LED FLAT PANEL TROFFER.
- L12

L12: AMENITY ENTRY DALI DIMMABLE RECESSED DOWNLIGHT.
- L13

L13: GAMING DALI DIMMABLE RECESSED DOWNLIGHT.
- L14

L14: RECEPTION WALL LIGHT.
- L15

L15: AMENITY RECESSEED DOWNLIGHT.
- L16

L16: DALI DIMMABLE RECESSED DOWNLIGHT.
- L17

L17: RECEPTION DALI DIMMABLE RECESSED DOWNLIGHT.
- L18

L18: ENTRY DALI DIMMABLE RECESSED DOWNLIGHT.
- L19

L19: CASHIER SHELF TWIN DALI DIMMABLE LED STRIP LIGHTS.
- L20

L20: NO LONGER REQUIRED.
- L21

L21: COUNTER FACE DALI DIMMABLE LED STRIP LIGHT.
- L22

L22: EXTERNAL WALL MOUNTED FLOODLIGHT.
- L23

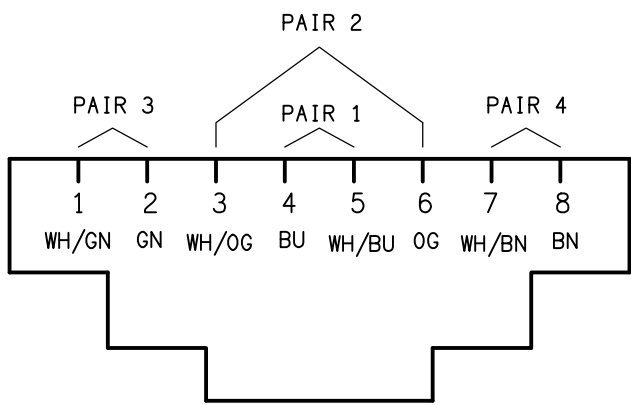
L23: FOUR SIDED MIRROR LED STRIP LIGHT.

NOTE

ALL ELECTRICAL PENETRATIONS THROUGH THE ROOF SHEETING ARE TO BE IN LINE WITH THE STRUCTURAL OR MECHANICAL SERVICES PENETRATIONS TO AVOID DEDICATED FLASHINGS FOR THE ELECTRICAL SERVICES.

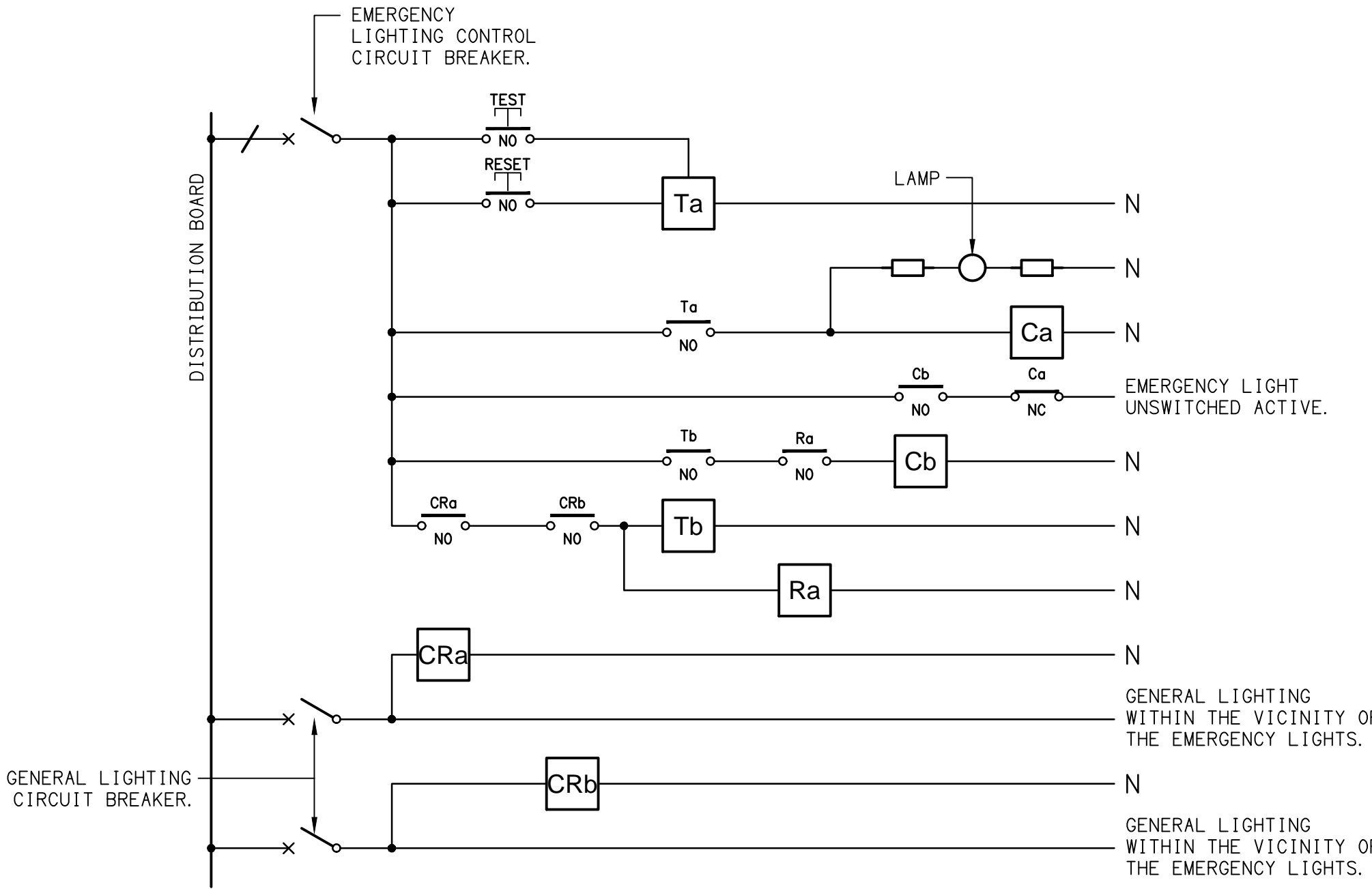
EQUIPMENT:

- TEST – TEST PUSH BUTTON MOUNTED ON THE DISTRIBUTION BOARD ESCUTCHEON.
- RESET – RESET PUSH BUTTON MOUNTED ON THE DISTRIBUTION BOARD ESCUTCHEON.
- LAMP – AMBER TEST INDICATING LAMP MOUNTED ON THE DISTRIBUTION BOARD ESCUTCHEON.
- Ta – ADJUSTABLE 0–3 HOUR TIMED RELAY.
- Tb – 15 MINUTE RUN-ON TIMER TO OPERATE UPON THE RETURN OF MAINS POWER.
- Cx – CONTACTOR x.
- CRx – CONTROL RELAY x.
- Rx – RELAY x.



SCHEMATIC

RJ45 PINOUT CONFIGURATION
NOT TO SCALE

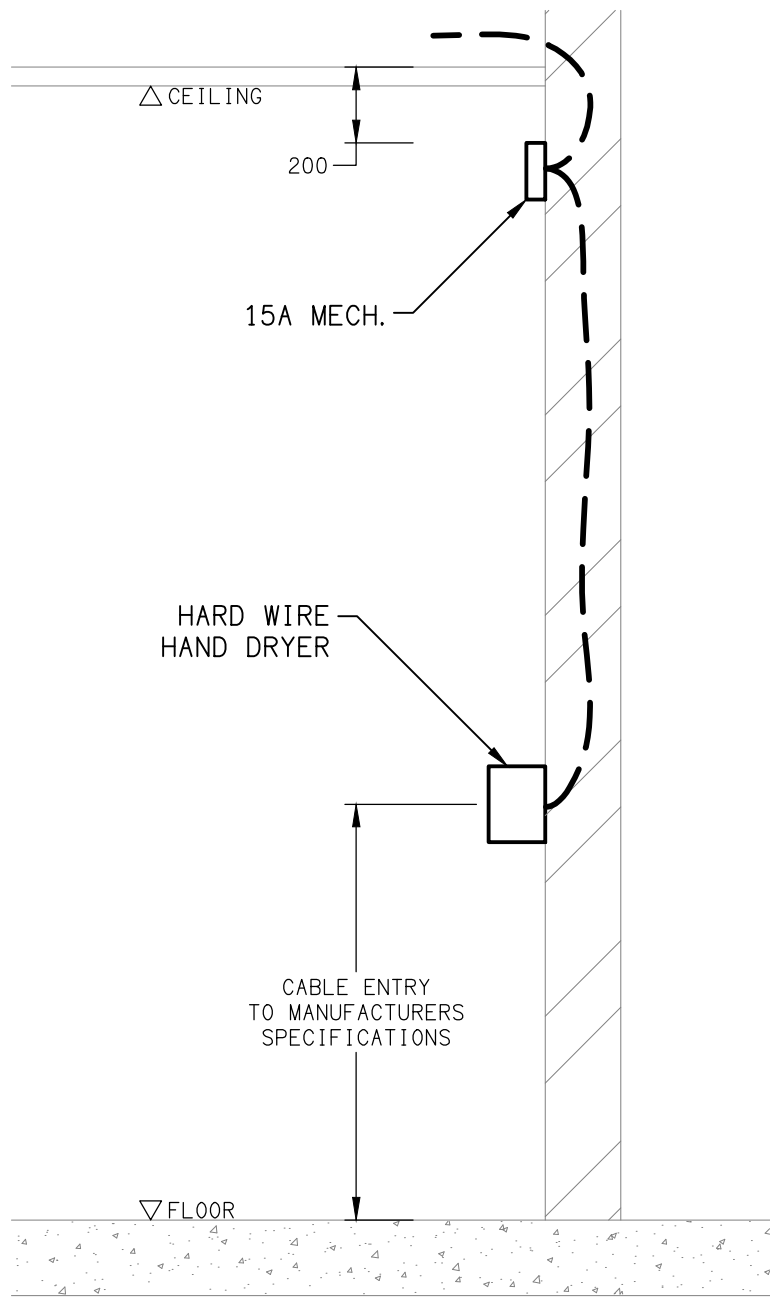


NOTES

- THE EMERGENCY LIGHT UNSWITCHED ACTIVE / GENERAL LIGHTING SWITCHED ACTIVE CIRCUIT ARRANGEMENT AND CONTROL IS TYPICAL FOR ALL CIRCUITS SUPPLYING EMERGENCY LIGHTS.
- PROVIDE ADDITIONAL CONTROL RELAYS (CRx) CONFIGURED AS PER CRa AND CRb FOR ALL ADDITIONAL LIGHTING CIRCUITS THAT SUPPLY LIGHTS IN THE VICINITY OF THE EMERGENCY LIGHTS.

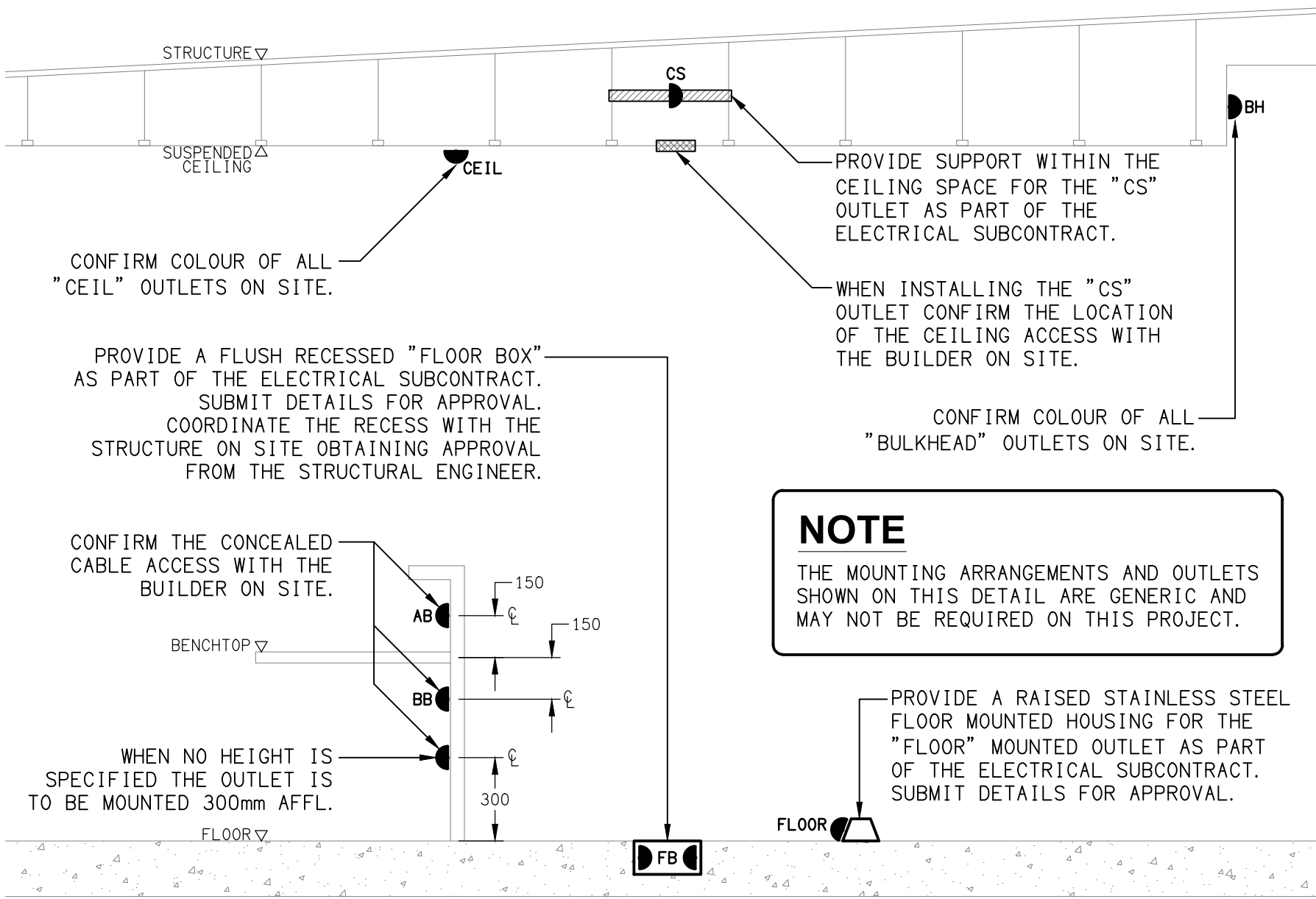
SCHEMATIC

EMERGENCY LIGHTING
NOT TO SCALE



DETAIL

HAND DRYER CONNECTION
NOT TO SCALE



DETAIL

TYPICAL OUTLET MOUNTINGS
NOT TO SCALE

NOTE

THE MOUNTING ARRANGEMENTS AND OUTLETS SHOWN ON THIS DETAIL ARE GENERIC AND MAY NOT BE REQUIRED ON THIS PROJECT.

NOTES

1. EXTENT OF WORKS

THE ELECTRICAL SERVICES SUB-CONTRACT INCLUDES BUT IS NOT LIMITED TO THE FOLLOWING:

- SUPPLY AND INSTALLATION OF ALL COMPONENTS FORMING PART OF THE ELECTRICAL SERVICES.
- INSPECTIONS.
- TESTING AND COMMISSIONING.
- MAINTENANCE.
- CABLING, CABLE SUPPORT SYSTEMS AND ACCESS.
- POWER DISTRIBUTION.
- LIGHTING.
- COMMUNICATIONS CABLING.
- AS CONSTRUCTED DOCUMENTS.
- TEMPORARY GAMING SERVICES.
- ALL MINOR COMPONENTS AND INCIDENTAL WORKS NOT SPECIFICALLY REFERRED TO, HOWEVER NECESSARY TO COMPLETE THE ELECTRICAL SERVICES INSTALLATION SUCH THAT IT IS HANDED OVER COMPLETE, OPERATIONAL AND FIT FOR THE INTENDED USE.

PRIOR TO COMMENCING WORK CONSULT SITE MANAGEMENT FOR ANY HAZARDOUS MATERIAL AND OR ASBESTOS REGISTERS AS WELL AS UNDERTAKE A THOROUGH INSPECTION OF THE SITE TO IDENTIFY ANY POTENTIAL HAZARDOUS MATERIALS, ASBESTOS AND HEALTH OR SAFETY RISKS. ADVISE THE CONTRACTOR OF ANY POTENTIAL HAZARDOUS MATERIALS, ASBESTOS AND HEALTH OR SAFETY RISKS IF IDENTIFIED AND DO NOT COMMENCE WORK UNTIL AN APPROPRIATE MANAGEMENT PLAN HAS BEEN DEVELOPED AND AGREED TO BY ALL PARTIES.

SUPPLY ALL LABOUR, MATERIALS, EQUIPMENT, AND ALL OTHER ITEMS, WHETHER MENTIONED IN DETAIL OR NOT, REQUIRED FOR THE SATISFACTORY COMPLETION OF THE ELECTRICAL SERVICES INSTALLATION, LEAVING IN FULL WORKING ORDER TO THE SATISFACTION OF THE PROJECT MANAGER.

ACCEPT FULL RESPONSIBILITY FOR LIASING, ARRANGING AND CO-ORDINATION OF ALL WORKS THAT HAVE AN EFFECT ON OR WILL BE AFFECTED BY THE ELECTRICAL SERVICES.

REFER TO THE EQUIPMENT SCHEDULE FOR ADDITIONAL REQUIREMENTS.

2. WORKMANSHIP

ENSURE THAT THE ELECTRICAL WORK IS PERFORMED BY THE HOLDER OF A CURRENT ELECTRICAL SUB CONTRACTOR LICENSE AND THE SERVICES COVERED BY THE ACMA IS PERFORMED BY THE HOLDER OF THE APPROPRIATE CURRENT ACMA LICENSE. ENSURE THE INSTALLATION AND ALL COMPONENTS, FIXTURES, FITTINGS, OUTLETS AND CABLES ARE SUPPLIED AND INSTALLED TO A HIGH STANDARD THROUGHOUT, AND INSTALLED IN A NEAT AND TRADESMAN LIKE MANNER, TO THE CURRENT INDUSTRY STANDARDS. ENSURE ALL MATERIALS AND COMPONENTS OF A SIMILAR TYPE ARE OF THE SAME MANUFACTURER AND INSTALLED IN A UNIFORM MANNER.

IT IS THE ELECTRICAL SUB CONTRACTOR’S RESPONSIBILITY TO ENSURE THAT THE INSTALLATION IS FIT FOR PURPOSE AND IS PROVIDED AS A COMPLETE WORKING INSTALLATION. IT IS THE ELECTRICAL SUB CONTRACTOR’S RESPONSIBILITY TO PROVIDE ALL COMPONENTS, FITTINGS, FIXTURES, SYSTEMS, PROGRAMMING ETC IRRESPECTIVE OF THE LEVEL DETAILED IN THE DOCUMENTS SUCH THAT THE INSTALLATION IS PROVIDED AS A COMPLETE WORKING INSTALLATION.

CONCEAL ALL WIRING AND CONDUITS. EXPOSED CABLING OR CONDUITS ARE GENERALLY NOT ACCEPTABLE. IT IS NOTED THAT CHASING AND REINSTATEMENT WILL BE REQUIRED. ENSURE ALL COMPONENTS, EQUIPMENT AND MATERIALS SUPPLIED ARE NEW, UNUSED, DESIGNED AND SELECTED TO ENSURE SATISFACTORY OPERATION UNDER VARYING ATMOSPHERIC, CLIMATIC, HUMID TROPICAL CONDITIONS WITHOUT DISTORTION AND DETERIORATION IN ANY PART AFFECTING EFFICIENCY AND RELIABILITY OF THE SYSTEMS. DESIGN AND SELECT ALL EQUIPMENT TO PROVIDE THE NECESSARY SAFETY TO HUMAN LIFE AND PROPERTY DURING OPERATION AND MAINTENANCE WITH PARTICULAR ATTENTION GIVEN TO ELECTRICAL SAFETY AND SEGREGATION PRECAUTIONS.

CHECK THE FINISHED PAINTWORK AROUND THE AREA OF EACH INSTALLATION AND TOUCH UP ALL DAMAGED PARTS AND FINISHES AFTER THE INSTALLATION OF THE ELECTRICAL SERVICES.

ALL WORKS ARE TO BE CARRIED OUT IN ACCORDANCE WITH THE BUILDER’S PROGRAM. ENSURE ALL FINAL LOCATIONS OF OUTLETS AND FITTINGS ARE CO-ORDINATED ONSITE WITH THE ARCHITECT AND ALL OTHER SERVICES, TO THE APPROVAL OF THE PROJECT MANAGER. ALLOW TO CO-ORDINATE THE FINAL LOCATION OF ALL EQUIPMENT, FITTINGS, & OUTLETS, SUCH THAT THEY ARE INSTALLED IN ACCORDANCE WITH THE AS3000 RESTRICTED ZONES, AND ARE NOT COVERED INAPPROPRIATELY.

ENSURE THAT ALL METAL SURFACES ARE SUITABLY PROTECTED AGAINST CORROSION, AND THAT ALL PLASTIC MATERIALS ARE UV STABILISED.

PROVIDE ALL MATERIALS AS NEW, AND OF THE HIGHEST CLASS AVAILABLE FOR THEIR RESPECTIVE TYPES. ENSURE ALL ASPECTS OF THE WORK ARE OF A HIGH STANDARD THROUGHOUT, AND INSTALLED IN A NEAT AND TRADESMAN LIKE MANNER, TO THE CURRENT INDUSTRY STANDARDS.

3. STANDARDS

IRRESPECTIVE OF INFORMATION CONTAINED IN THE ELECTRICAL SERVICES DOCUMENTS OR IN INSTRUCTIONS, IT IS THE ELECTRICAL SUB CONTRACTOR’S RESPONSIBILITY TO ENSURE ALL ELECTRICAL SERVICES WORKS ARE INSTALLED IN ACCORDANCE WITH THE REQUIREMENTS OF THE FOLLOWING. REFER ANY DISCREPANCIES BETWEEN THE REQUIREMENTS OF THE FOLLOWING AND/OR THE ELECTRICAL SERVICES DOCUMENTS AND INSTRUCTIONS TO THE ARCHITECT FOR CLARIFICATION PRIOR TO THE PLACING OF ORDERS, FABRICATION OR INSTALLATION OF THE ITEMS/METHODS IN DISCREPANCY.

- NCC BUILDING CODE OF AUSTRALIA.
- ELECTRICITY ACT.
- ELECTRICAL SAFETY ACT.
- AS/NZS3000.
- AS3008.
- WORKPLACE HEALTH AND SAFETY ACT.
- TELECOMMUNICATIONS ACT.
- ACMA REQUIREMENTS.

4. AUTHORITIES

ENSURE ALL OF THE ELECTRICAL SERVICES COMPLY WITH THE REQUIREMENTS OF ALL REGULATORY AUTHORITIES HAVING JURISDICTION OVER THE SITE INCLUDING BUT NOT LIMITED TO THE FOLLOWING:

- ACMA.
- LOCAL COUNCIL.
- LOCAL SUPPLY AUTHORITY.
- STATE GOVERNMENT DEPARTMENT OF ENVIRONMENT AND HERITAGE.
- QLD GOVERNMENT, DIVISION OF WORKPLACE, HEALTH AND SAFETY.
- QLD FIRE AND EMERGENCY SERVICES.

NOTES

5. CABLES

UNLESS OTHERWISE SPECIFIED, INSTALL AND TERMINATE CABLES IN ACCORDANCE WITH THE MANUFACTURERS’ RECOMMENDATIONS. DETERMINE THE FINAL ROUTES TO SUIT THE BUILDING STRUCTURE AND SITE CONDITIONS. UNLESS NOTED OTHERWISE, PROVIDE ALL 240 VOLT POWER AND LIGHTING WIRING AS 2.5mm² TWIN & EARTH STRANDED COPPER CONDUCTORS, PVC INSULATED 0.6/1kV V75 GRADE TO AS3174, PROTECTED BY A 20 AMP CIRCUIT BREAKER. ALL CONDUIT AND FITTINGS TO BE RIGID UPVC TO AS2053, UNLESS NOTED OTHERWISE.

6. POWER DISTRIBUTION

THE POWER DISTRIBUTION COMPONENT OF THIS CONTRACT INCLUDES THE PROVISION OF A NEW DISTRIBUTION BOARD DB-A SUPPLIED VIA NEW 4 CORE 70MM² Cu XLPE SUBMAINS PROTECTED BY NEW 160 AMP THREE PHASE CIRCUIT BREAKER IN THE MSB. ALL OF THE EXISTING CIRCUITS, CABLING AND OUTLETS THAT BECOME REDUNDANT ARE TO BE REMOVED.

ANY INTERRUPTION TO THE POWER SUPPLY TO ANY SERVICES OUTSIDE OF THE AREA OF WORKS MUST BE RESTRICTED TO OUTSIDE OF THE CLUBS OPERATING HOURS AND MUST BE ADVISED TO THE OPERATOR IN WRITING TWO WEEKS PRIOR.

THE POWER DISTRIBUTION COMPONENT OF THIS CONTRACT INCLUDES, BUT IS NOT LIMITED TO THE FOLLOWING EXTENT OF WORK:

- POWER DISTRIBUTION.
- SWITCHBOARD.
- SUBMAINS.
- CABLE ACCESS WAYS.
- CIRCUITS.
- ISOLATORS AND OUTLETS.
- TESTING AND COMMISSIONING.
- REMOVAL OF ALL EXISTING REDUNDANT SERVICES.

REFER TO THE DISTRIBUTION BOARD SCHEDULE FOR ADDITIONAL REQUIREMENTS AND CIRCUIT DETAILS.

7. LIGHTING

ALL OF THE LIGHT FITTINGS, LAMPS AND ACCESSORIES ARE TO BE PROVIDED AS PART OF THIS CONTRACT. THE LIGHTING COMPONENT OF THIS CONTRACT INCLUDES, BUT IS NOT LIMITED TO THE FOLLOWING EXTENT OF WORK:

- LIGHTING.
- LIGHT FITTINGS AND ACCESSORIES.
- EMERGENCY AND EXIT LIGHTING.
- EARTHING OF THE LIGHTING INSTALLATION.
- LIGHTING CONTROL.
- PHILIPS DYNALITE LIGHTING CONTROL SYSTEM.
- LIGHTING SUBCIRCUITS.
- TESTING AND COMMISSIONING.
- RECONNECTION OF THE EXISTING LIGHTING THAT REMAINS.
- REMOVAL OF ALL EXISTING REDUNDANT LIGHTING SERVICES.

PROVIDE A SINGLE POINT EMERGENCY LIGHTING SYSTEM THAT COMPLIES WITH THE LATEST ISSUE OF ALL PARTS AS2293 AND THE RELEVANT PARTS OF THE NCC BCA. INSTALL EMERGENCY LIGHT FITTINGS NOMINATED AS MAINTAINED WITH THE LAMP PERMANENTLY ON SUPPLIED VIA AN UNSWITCHED ACTIVE MAINS SUPPLY WHEN THE MAINS SUPPLY IS AVAILABLE. WHEN THE MAINS SUPPLY IS NOT AVAILABLE, THE LAMP IS TO REMAIN ON SUPPLIED BY THE EMERGENCY PACK. SINGLE LAMP MAINTAINED EMERGENCY LIGHTS ARE NOT SWITCHED WITH THE LOCAL GENERAL AREA LIGHTING. (THE LAMP IS ALWAYS ON.)

INSTALL EMERGENCY LIGHT FITTINGS NOMINATED AS NON-MAINTAINED AS FOLLOWS:

- IF THE FITTING IS NOT BEING SWITCHED, THE LAMP IS TO REMAIN OFF WHEN THE MAINS SUPPLY IS AVAILABLE. WHEN THE MAINS SUPPLY IS NOT AVAILABLE THE LAMP IS TO BE SWITCHED ON SUPPLIED BY THE EMERGENCY PACK. UNSWITCHED SINGLE LAMP NON-MAINTAINED EMERGENCY LIGHTS ARE NOT SWITCHED WITH THE LOCAL GENERAL AREA LIGHTING. (THE LAMP IS ON ONLY WHEN THE MAINS SUPPLY IS NOT AVAILABLE.)
- IF THE FITTING IS BEING SWITCHED, THE LAMP IS TO BE SUPPLIED AND CONTROLLED WITH THE LOCAL GENERAL AREA LIGHTING WHEN THE MAINS SUPPLY IS AVAILABLE. WHEN THE MAINS SUPPLY IS NOT AVAILABLE THE LAMP IS TO BE SWITCHED ON, SUPPLIED BY THE EMERGENCY PACK. (THE LAMP IS ON WHEN TURNED ON WITH THE LOCAL GENERAL LIGHTING OR THE MAIN SUPPLY IS NOT AVAILABLE.)

INSTALL EMERGENCY LIGHTS SUCH THAT THE STATUS INDICATOR L.E.D. IS CLEARLY VISIBLE AND THE TEST BUTTONS ARE READILY ACCESSIBLE. LABEL EACH CIRCUIT BREAKER WHICH CONTROLS THE UNSWITCHED ACTIVE TO EXIT LIGHTS WITH A LABEL FIXED ADJACENT; ENGRAVED PLASTIC LAMINATE, GREEN BACKGROUND WITH WHITE CHARACTERS:-

WARNING
INTERRUPTING SUPPLY WILL DISCHARGE
EMERGENCY LIGHTING BATTERIES

PROVIDE WRITTEN EVIDENCE OF THE INITIAL COMMISSIONING AND TESTING AND TESTING FOR THE DURATION OF THE MAINTENANCE PERIOD IN ACCORDANCE WITH AS 2293.2.

THIS EVIDENCE IS TO BE IN THE FORM OF A LOG BOOK SIMILAR TO THE GENERAL LIGHTING SERVICE PTY LTD "EMERGENCY LIGHTING MAINTENANCE LOG BOOK AND MANUAL" WHICH IS TO BE PROVIDED BY THE ELECTRICAL SUB-CONTRACTOR AND HAVE ALL ENTRIES FULLY COMPLETED AND BE PRESENTED FOR INSPECTION AT PRACTICAL COMPLETION. THE LOG BOOK IS TO BE RETAINED BY THE ELECTRICAL SUB-CONTRACTOR FOR THE DURATION OF THE MAINTENANCE PERIOD, AND THE SIX MONTHLY TEST AND MAINTENANCE RESULTS ENTERED. THE LOG BOOK IS TO BE PRESENTED FOR APPROVAL AT FINAL COMPLETION (EXPIRY OF THE MAINTENANCE PERIOD) AND WILL BE FORWARDED TO THE OPERATOR FOR THEIR USE.

PROVIDE MAINTENANCE OF THE EMERGENCY AND EXIT LIGHTING INSTALLATION INCLUDING RECORDS IN ACCORDANCE WITH THE LATEST ISSUE OF ALL PARTS AS2293 AND THE RELEVANT PARTS OF THE NCC BCA. PROVIDE THE EMERGENCY LIGHTING SYSTEM WITH A SUPPLY SENSING AND TESTING FACILITY IN ACCORDANCE WITH AS 2293.1.

NOTES

8. COMMUNICATIONS CABLING

ANY INTERRUPTION TO THE CLUBS COMMUNICATIONS SERVICES OUTSIDE OF THE AREA OF WORKS MUST BE RESTRICTED TO OUTSIDE OF THE CLUBS OPERATING HOURS AND MUST BE ADVISED TO THE OPERATOR IN WRITING TWO WEEKS PRIOR.

TAKE POSSESSION OF DUPLEX FIBRE CABLE AND INTERCONNECT EACH OF THE BANKS OF GAMING MACHINES AND RETURN THE END TO THE NEW GAMING COMMUNICATIONS RACK CR-B. THE DUPLEX FIBRE CABLE WILL BE SUPPLIED AND TERMINATED BY THE GAMING MONITORING COMPANY.

THE COMMUNICATIONS CABLING COMPONENT OF THIS CONTRACT INCLUDES, BUT IS NOT LIMITED TO THE FOLLOWING EXTENT OF WORK:

- PATCH PANELS AS NECESSARY.
- CAT 6 COMMUNICATIONS OUTLETS AND CABLING.
- CAT 6 GAMING OUTLETS AND CABLING.
- INSTALLATION OF GAMING DUPLEX FIBRE CABLING.
- CABLE ACCESS WAYS.
- TESTING AND COMMISSIONING.
- REMOVAL OF ALL EXISTING COMMUNICATIONS CABLING MADE REDUNDANT BY THE WORKS.

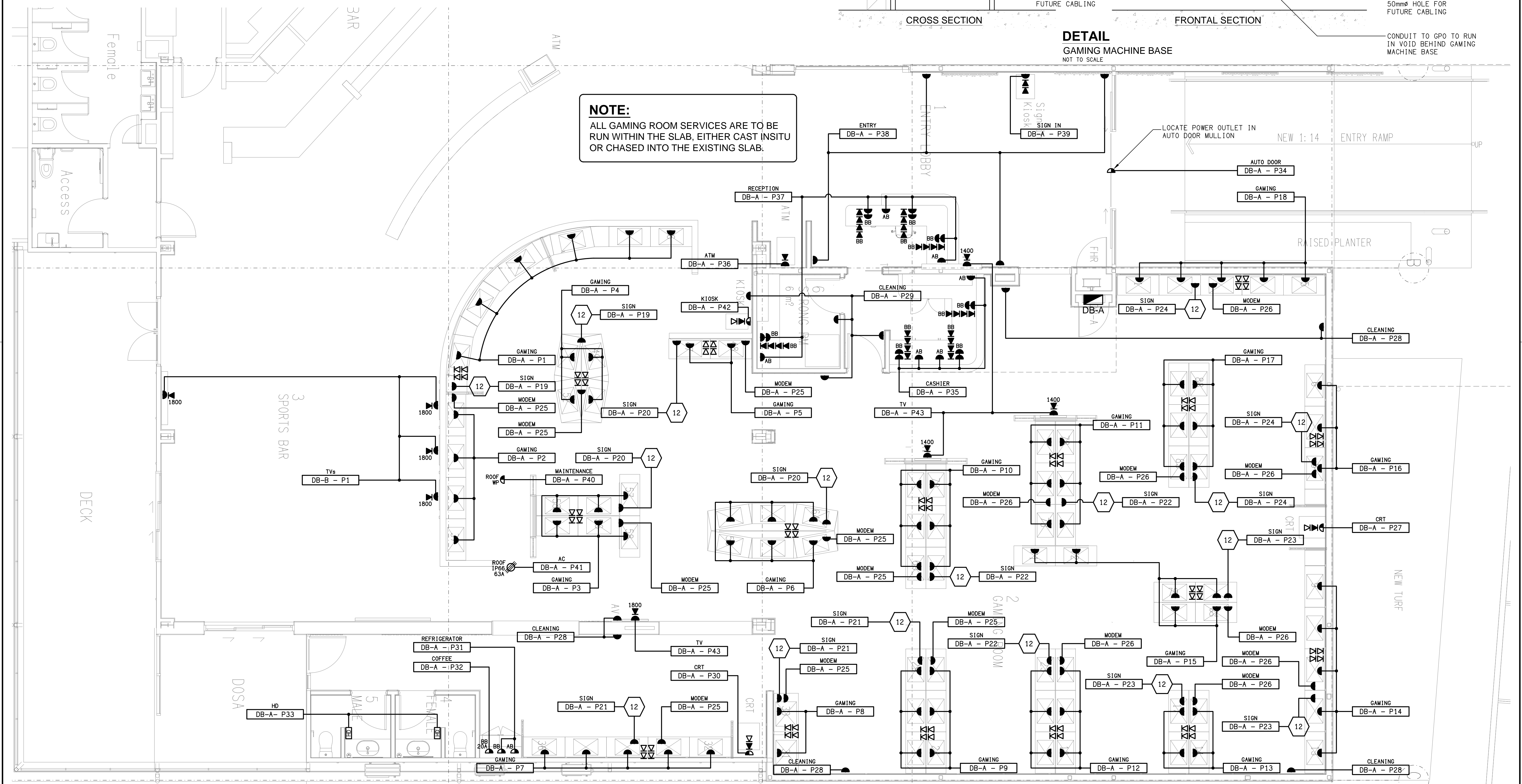
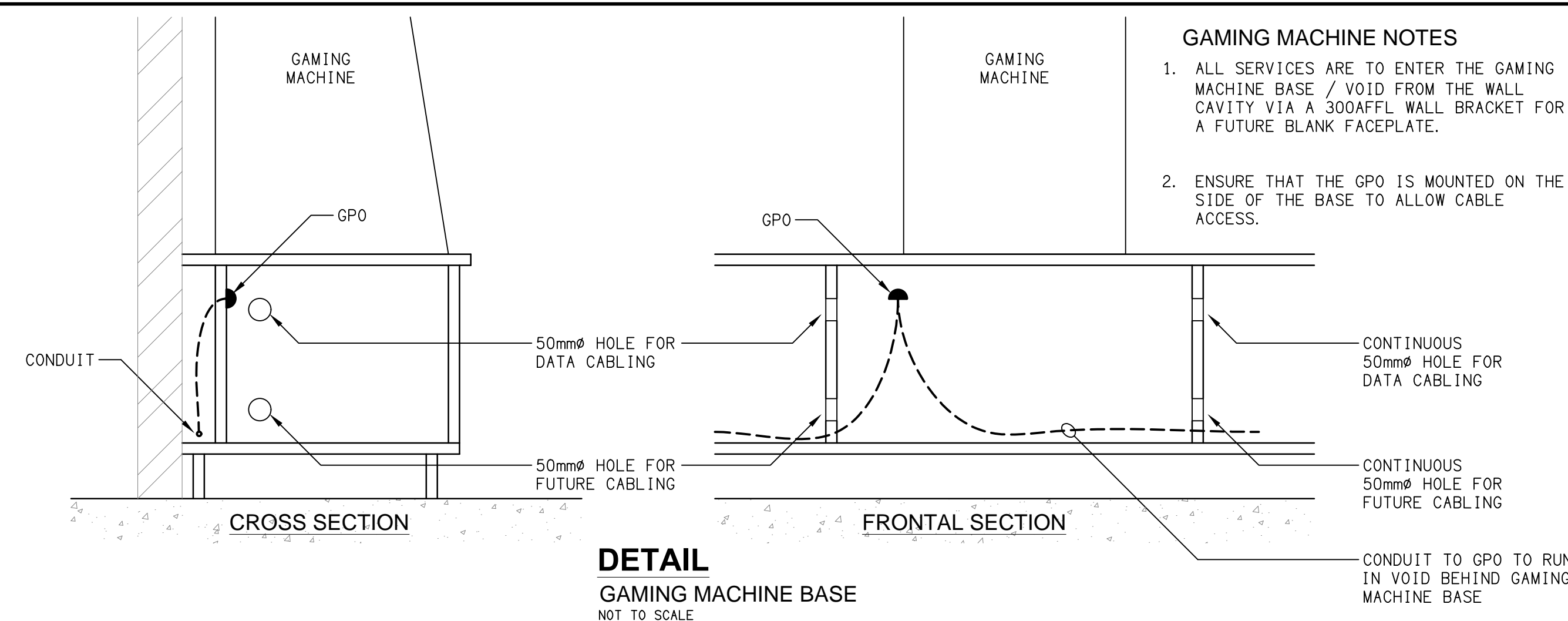
9. ABBREVIATIONS

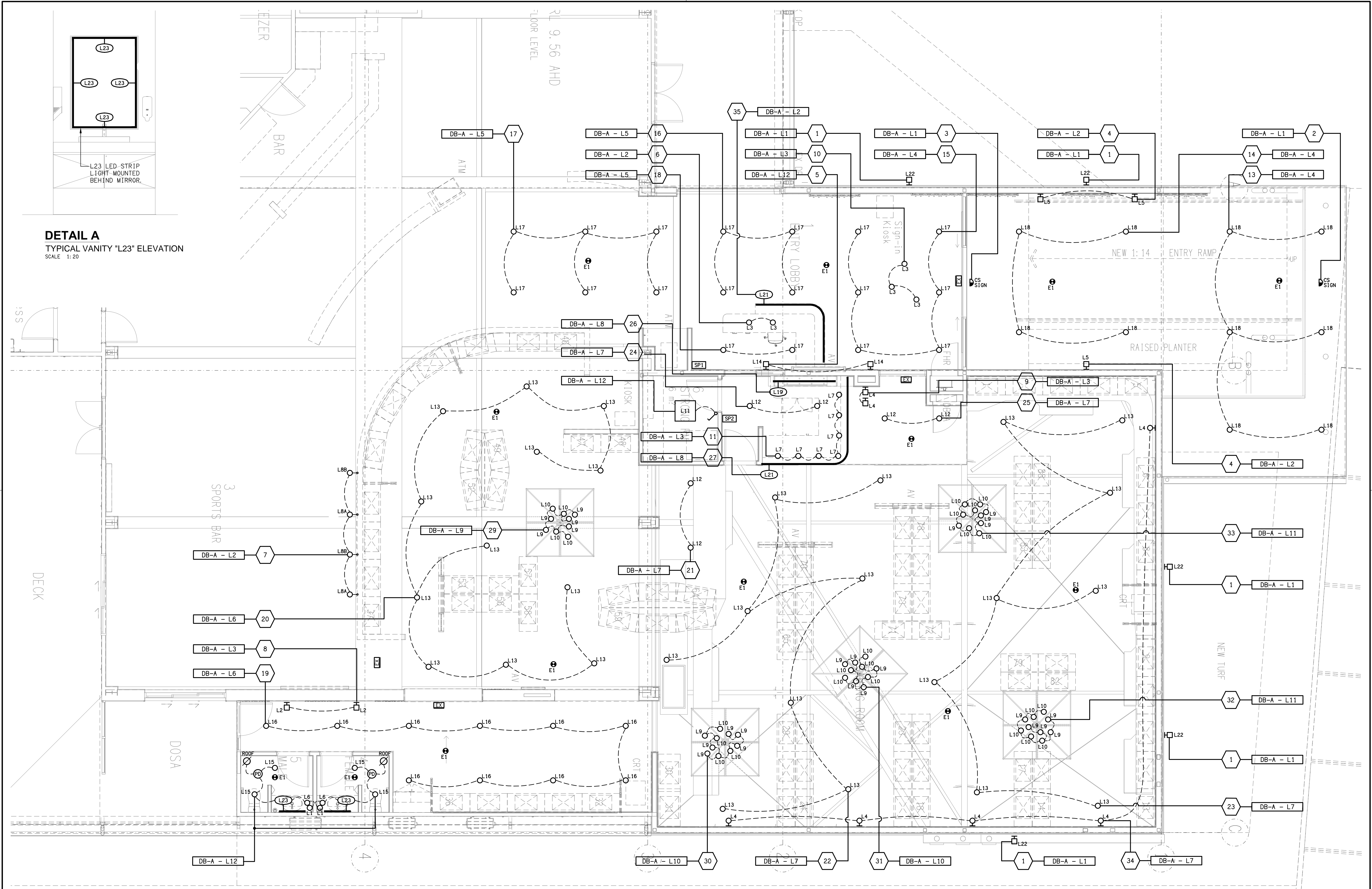
A - AMP CURRENT RATING
AB - MOUNT ABOVE BENCH.
AFFL - ABOVE FINISHED FLOOR LEVEL.
BB - MOUNT BELOW BENCH.
BH - MOUNT ON BULKHEAD.
CEIL - MOUNT ON CEILING.
CS - MOUNT WITHIN CEILING SPACE.
C/W - COMPLETE WITH.
DW - DISHWASHER.
HP - HOT PLATE.
MCB - MINIATURE CIRCUIT BREAKER.
MSB - MAIN SWITCHBOARD.
MSSB - MECHANICAL SERVICES SWITCHBOARD.
MW - MICROWAVE.
N - NEON / LED INDICATOR WHEN ON.
NTS - NOT TO SCALE.
OV - OVEN.
PC - PROVISIONAL SUM.
QDC - QUEENSLAND DEVELOPMENT CODE.
RCBO - CIRCUIT BREAKER C/W AN INTEGRAL 30mA RESIDUAL CURRENT DEVICE.
RCD - CIRCUIT PROTECTED VIA A 30mA RESIDUAL CURRENT DEVICE.
REF - REFRIGERATOR.
TBA - TO BE ADVISED.
UNO - UNLESS NOTED OTHERWISE.
WP - WEATHERPROOF TO IP56 UNO.
500 - NUMBER DENOTES MOUNTING HEIGHT AFFL.

ELECTRICAL DESIGN GROUP BRISBANE PTY LTD ACN 092 710 793		THE COPYRIGHT OF THIS DRAWING REMAINS THE PROPERTY OF THE ELECTRICAL DESIGN GROUP.		PROJECT: ZILLMERE SPORTS CLUB GAMING EXTENSION		C CONSTRUCTION 10/04/2024	
TRADING AS: ELECTRICAL DESIGN GROUP		USE FIGURED DIMENSIONS IN PREFERENCE TO SCALE.		DRAWING: ELECTRICAL SERVICES NOTES		REV: DESCRIPTION: DATE:	
ALL DIMENSIONS TO BE VERIFIED ONSITE.		P.O.Box 15, Sherwood Q.4075 Phone: (07) 3278 4375 Email: brisbane@edg.net.au Web: www.edg.net.au		340 ZILLMERE ROAD, ZILLMERE		SCALE: NOT TO SCALE AT A1	
		ELECTRICAL DESIGN GROUP ELECTRICAL BUILDING SERVICES CONSULTANTS BRISBANE GOLD COAST				PROJECT NO: DRAWING NO: REVISION:	
						C2933a E02 C	

NOTE:
REFER TO DRAWING C2933a-E05.dwg FOR
THE ADDITIONAL GAMING ROOM FIBRE PLAN.

NOTE:
ALL GAMING ROOM SERVICES ARE TO BE
RUN WITHIN THE SLAB, EITHER CAST INSITU
OR CHASED INTO THE EXISTING SLAB.





DETAIL A
TYPICAL VANITY "L23" ELEVATION
SCALE 1:20



NOTE:
ALL GAMING ROOM SERVICES ARE TO BE RUN WITHIN THE SLAB, EITHER CAST INSITU OR CHASED INTO THE EXISTING SLAB.