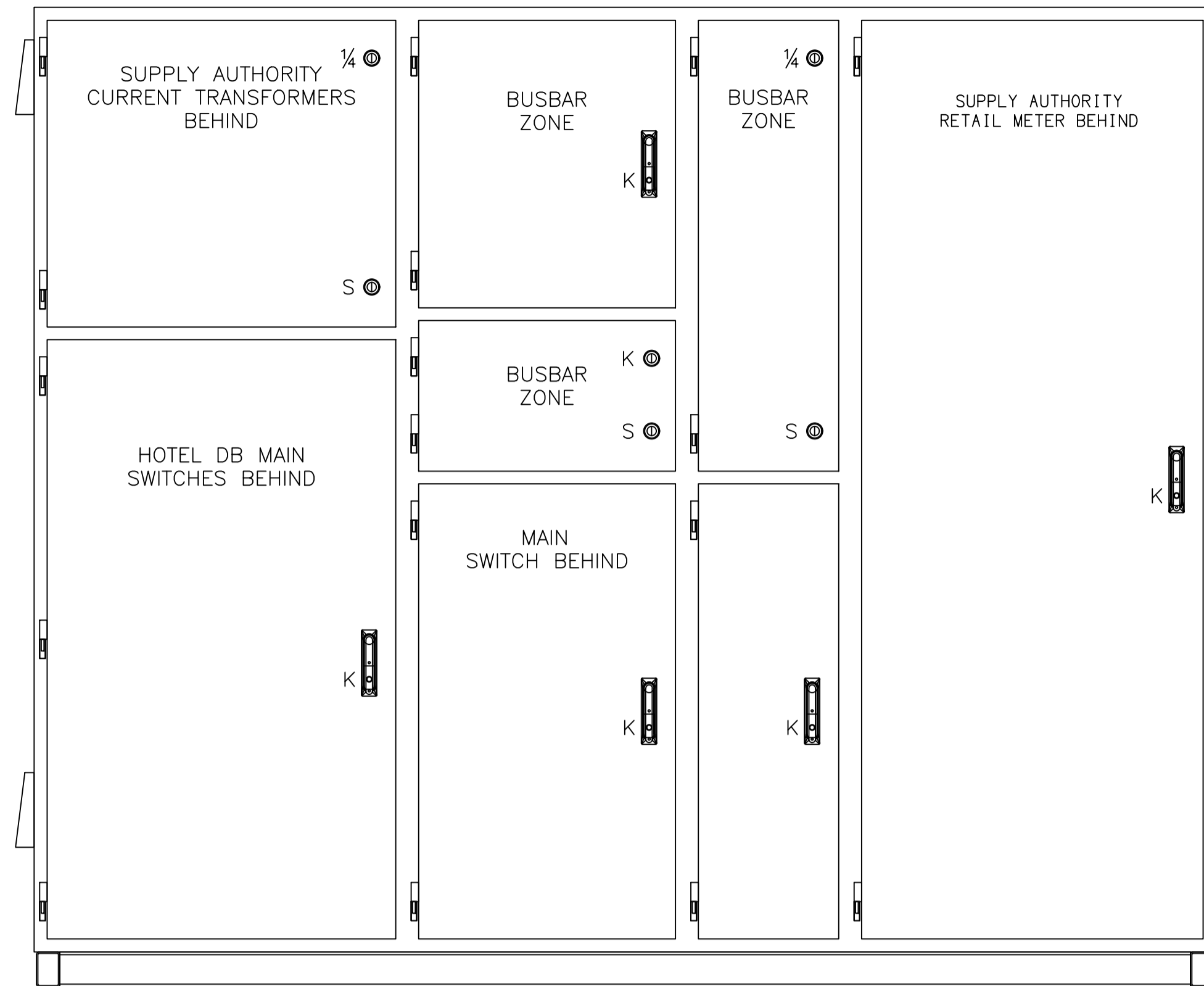
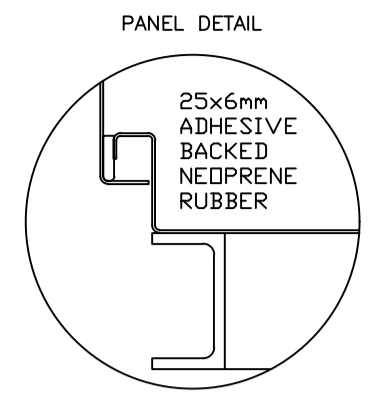


FRONT VIEW  
DOORS REMOVED



FRONT VIEW

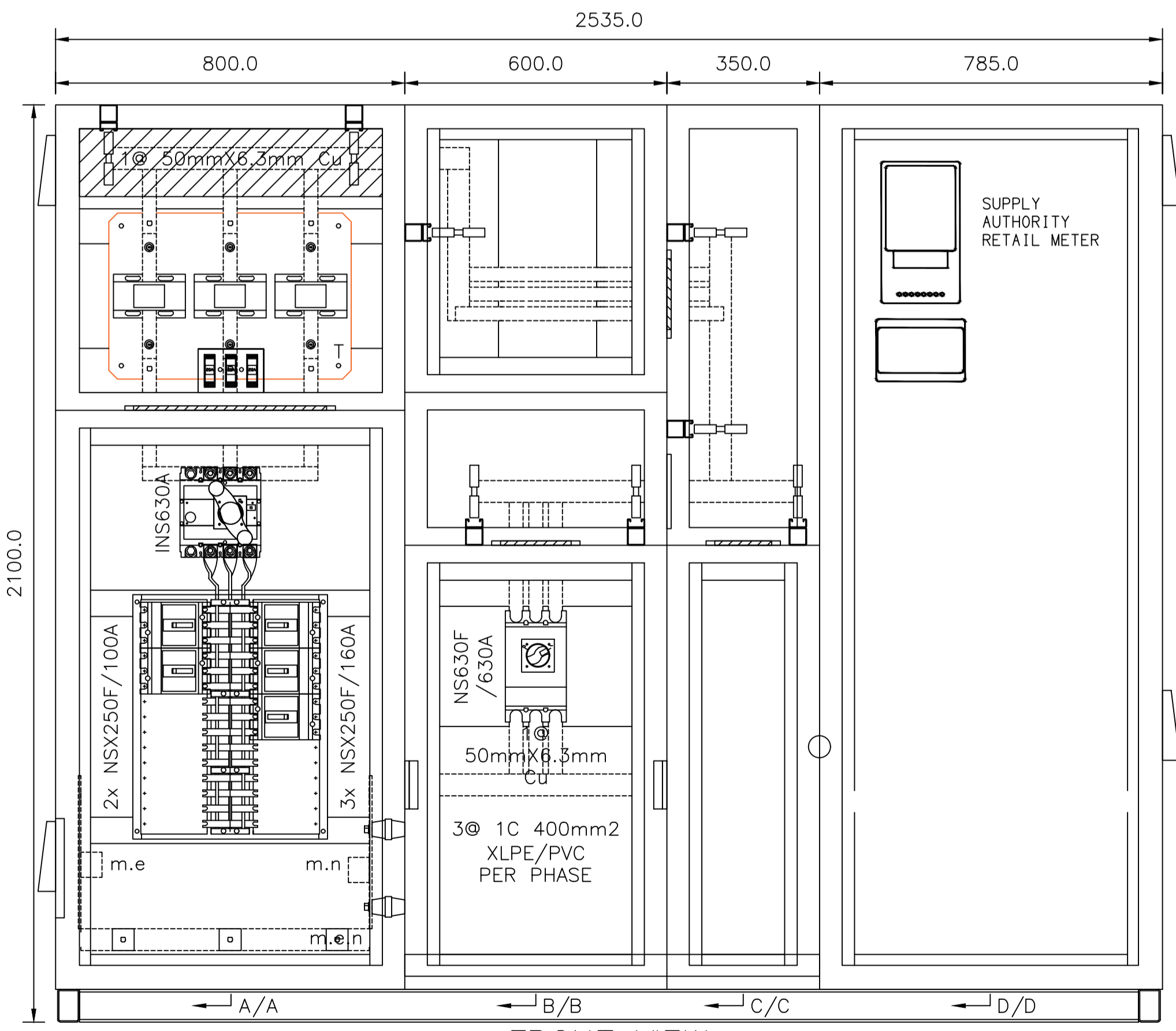


CONSTRUCTION NOTES

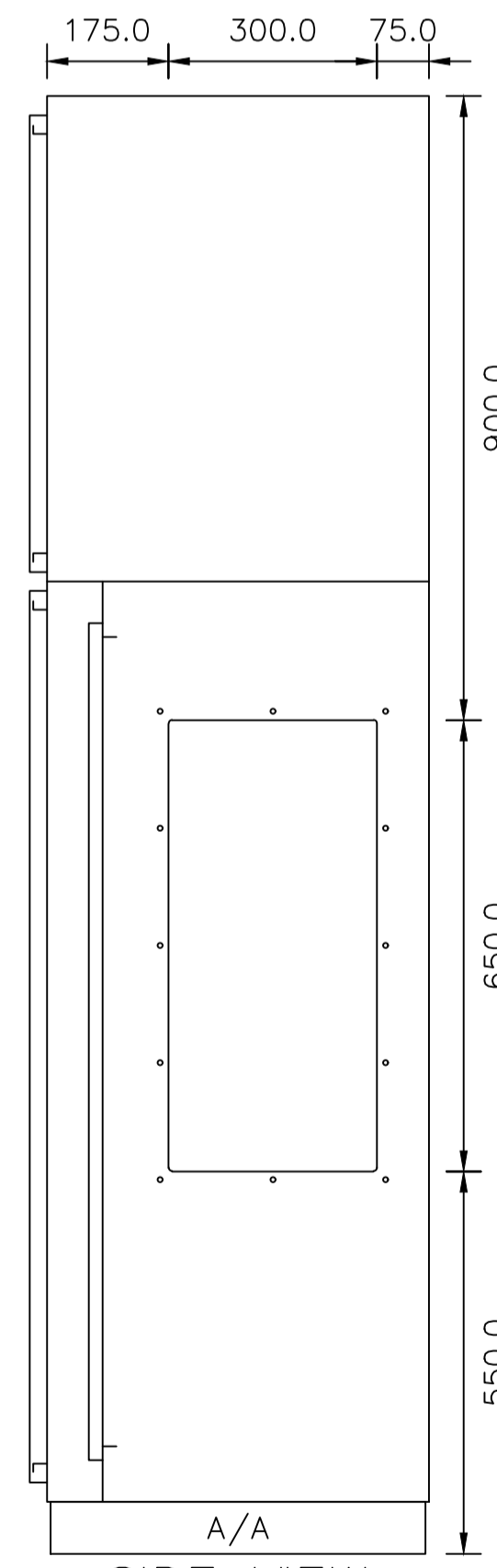
- MANUFACTURED TO AS/NZS61439.1
- FORM OF SEGREGATION FORM 2
- DEGREE OF PROTECTION IP 56
- FAULT RATING 35kA
- CURRENT RATING 630A
- OPERATING VOLTAGE 415V 50HZ
- TEST CERTIFICATE NO NATA No.: 102498 & 102505  
ASTA No.: 17285
- CUBICLE 2.0mm ZINC ANNEALED SHEET STEEL  
FOLDED AND SEAM WELDED
- PLINTH 75x40x4mm DURAGAL CHANNEL
- GLAND PLATES 3mm ALUMINIUM
- FINISH BAKED POLYESTER POWDER COATED
- COLOUR X15 ORANGE RIPPLE OUTSIDE  
X15 ORANGE RIPPLE INSIDE
- HINGES WHITE ESCUTCHEONS & GEAR TRAYS
- BUS BARS CHROME PLATED BRASS BLOCK PINTEL  
TINNED COPPER WITH PHASE ID BANDS
- BUS BAR SUPPORTS 20mm FIBON
- BUS BAR HARDWARE M10 HIGH TENSILE
- ENTRY BOTTOM
- EXIT LEFT & RIGHT
- LABELS ENGRAVED MULTI-LAYERED TRAFFOLYTE  
MAIN SWITCHBOARD LABEL 15mm W/B/W  
MAIN SWITCH LABELS 11mm W/B/W  
SUB MAIN LABELS 8mm W/B/W  
OTHER MINOR EQUIPMENT 6mm W/B/W
- CIRCUIT BREAKERS SCHNEIDER

CONTRACTOR MUST OBTAIN APPROVAL FROM  
THE SUPPLY AUTHORITY

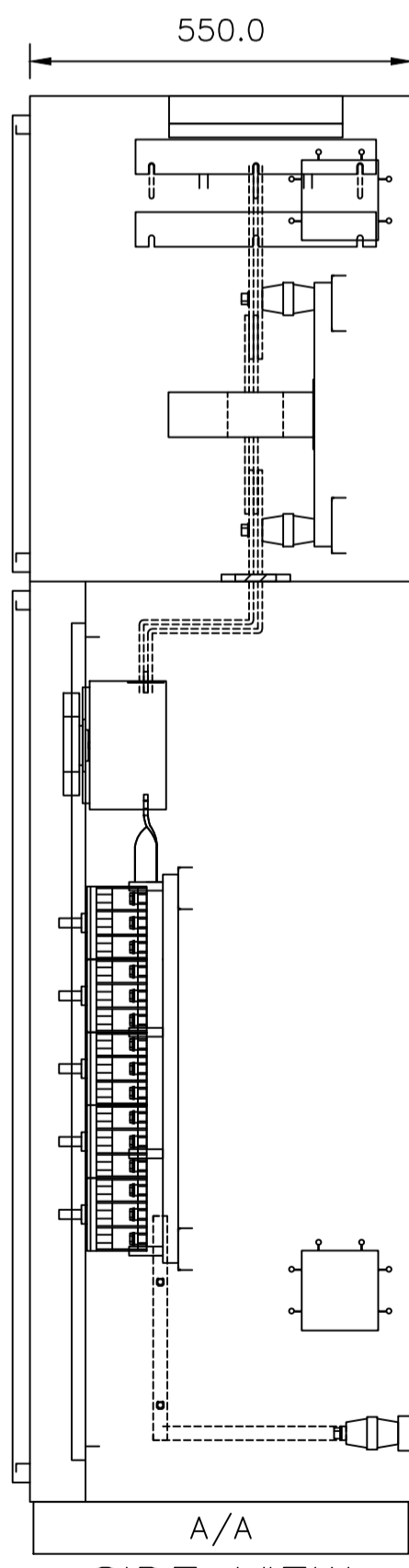
- NOTE: "K" DENOTES 'KEYLOCKABLE (92268)' (ENERGEX) (ERAGON)
- NOTE: "¼" DENOTES '8mm LOCKING QUARTER TURN' (ENERGY AUSTRALIA)
- NOTE: "P" DENOTES 'PADLOCKABLE' (COUNTRY ENERGY)
- NOTE: "S" DENOTES 'SEALABLE'



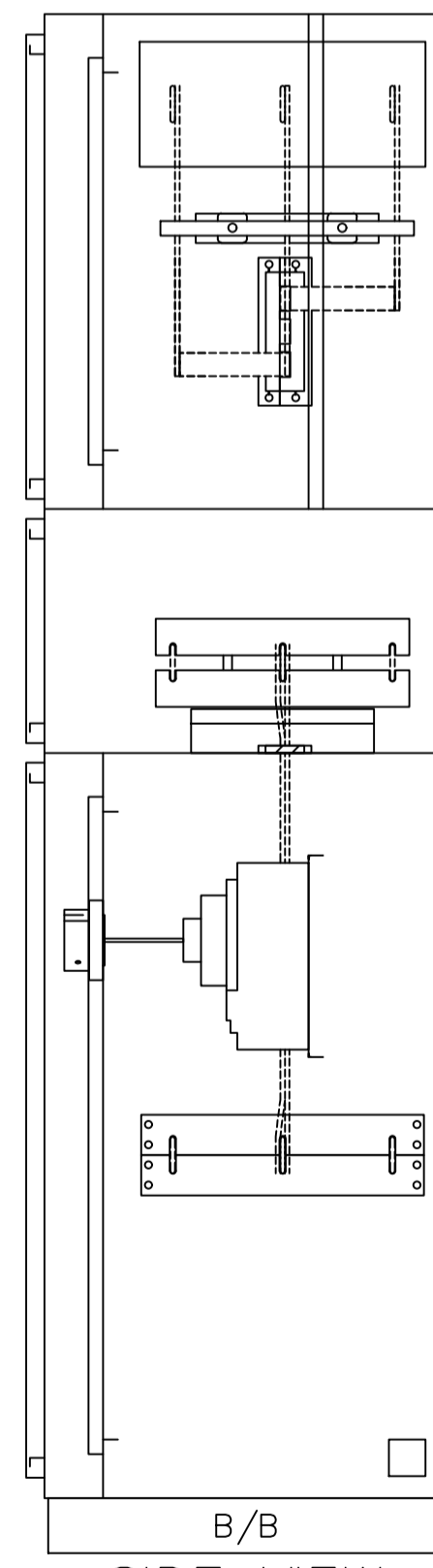
FRONT VIEW  
DOORS & COVERS REMOVED



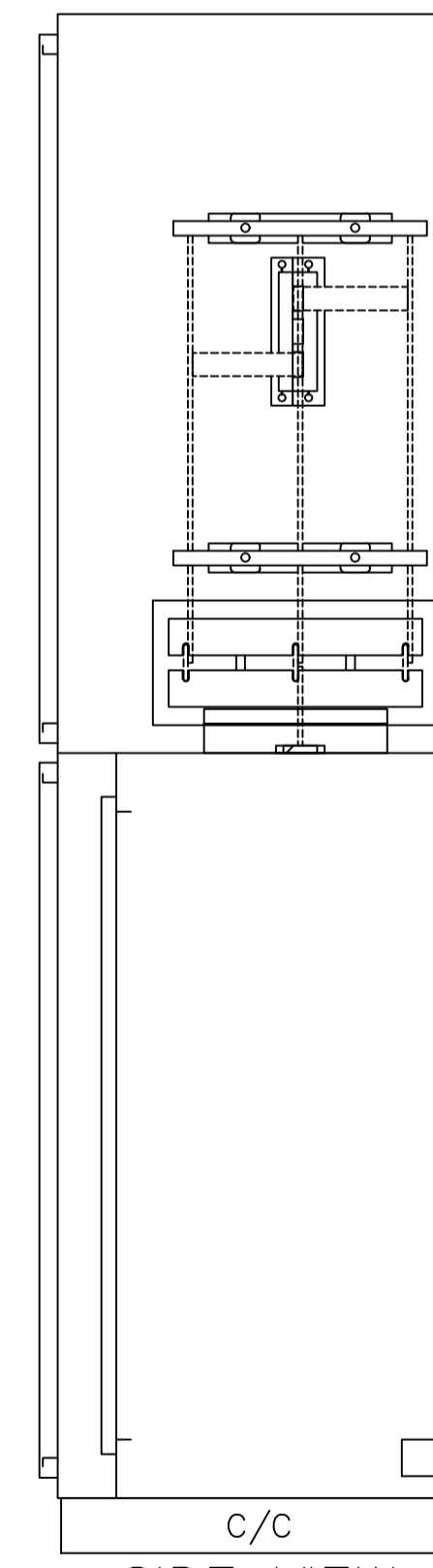
SIDE VIEW  
GLAND CUTOUT



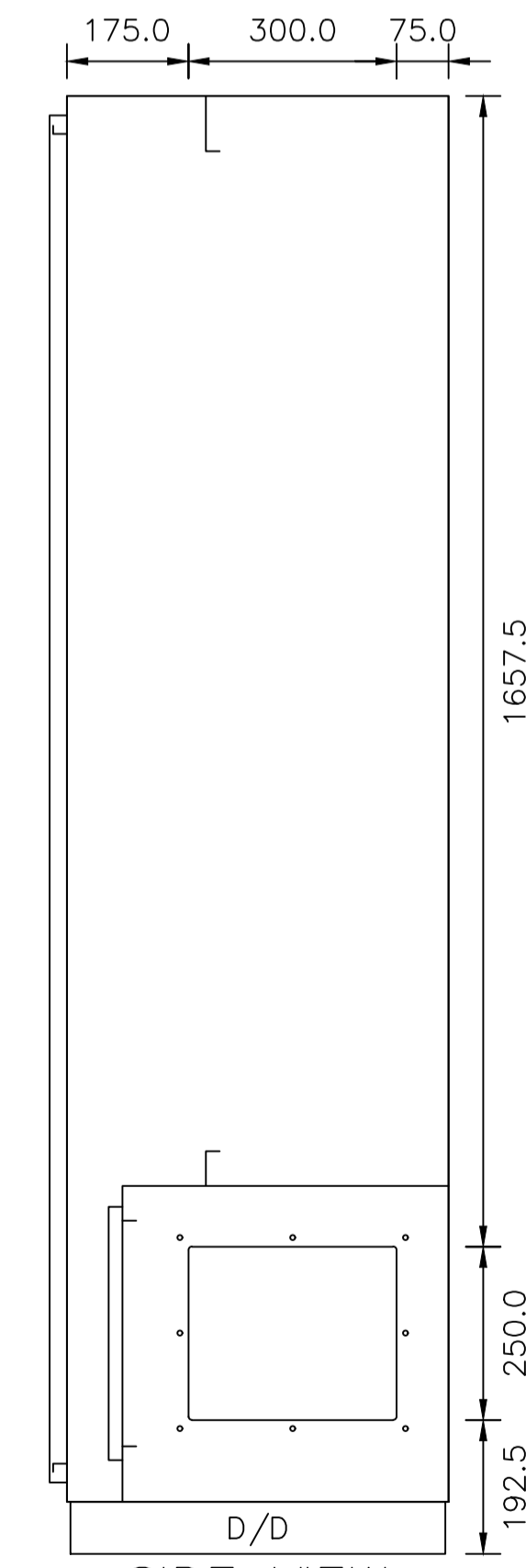
SIDE VIEW



SIDE VIEW



SIDE VIEW



SIDE VIEW  
GLAND CUTOUT

CONTRACTOR TO  
MAINTAIN IP RATING

ELECTRICAL DESIGN GROUP BRISBANE  
PTY LTD  
ACN 092 710 793  
TRADING AS:  
ELECTRICAL DESIGN GROUP

THE COPYRIGHT OF THIS DRAWING  
REMAINS THE PROPERTY OF THE  
ELECTRICAL DESIGN GROUP.  
USE FIGURED DIMENSIONS  
IN PREFERENCE TO SCALE.  
ALL DIMENSIONS TO BE  
VERIFIED ONSITE.

**ELECTRICAL DESIGN GROUP**  
ELECTRICAL BUILDING SERVICES CONSULTANTS  
BRISBANE GOLD COAST  
P.O. Box 15, Sherwood Q.4075  
Phone: (07) 3278 4375  
Email: brisbane@edg.net.au  
Web: www.edg.net.au

PROJECT:  
**PALM BEACH DAN MURPHYS**  
118 GOLD COAST HIGHWAY, PALM BEACH, GOLD COAST

B	TENDER	19/06/2023
REV:	DESCRIPTION:	DATE:
DRAWING: <b>ELECTRICAL SERVICES MSB SHOP DRAWING</b>		
SCALE: 1:10	PROJECT NO: AT A1 <b>C2582a</b>	DRAWING NO: <b>E10</b>
		REVISION: <b>B</b>