

**29 CAMERA SYSTEM**

**IP CAMERA LOCATIONS**

- IP01 STORE ENTRY
- IP02 POINT OF SALE 1
- IP03 POINT OF SALE 2
- IP04 POINT OF SALE 3
- IP05 EYE LEVEL EXIT
- IP06 PREMIUM WINES FRONT
- IP07 PREMIUM WINES REAR
- IP08 SPIRITS 1
- IP09 SPIRITS CABINET
- IP10 SPIRITS 2
- IP11 SPIRITS 3
- IP12 BULK STACK BEER
- IP13 RTD FRIDGE
- IP14 CASH OFFICE INTERNAL
- IP15 COOLROOM
- IP16 STOCKROOM
- IP17 DOCK INTERNAL
- IP18 STAFF ENTRY
- IP19 OUTSIDE FRONT CARPARK LEFT
- IP20 DOCK EXTERNAL
- IP21 OUTSIDE FRONT CARPARK RIGHT
- IP22 SECURITY RESERVE
- IP23 LANGTONS
- IP24 COOLROOM 2
- IP25 WINE REAR
- IP26 WINE FRONT
- IP27 WINE OVERFLOW
- IP28 TASTING AREA
- IP29 OUTSIDE EXTERNAL LEFT SIDE

**MONITOR LOCATIONS**

- ◻ STORE ENTRY 40" LED
- ◻ SPIRITS 40" LED
- ◻ COOLROOM 40" LED

**CCTV SECURITY LEGEND**

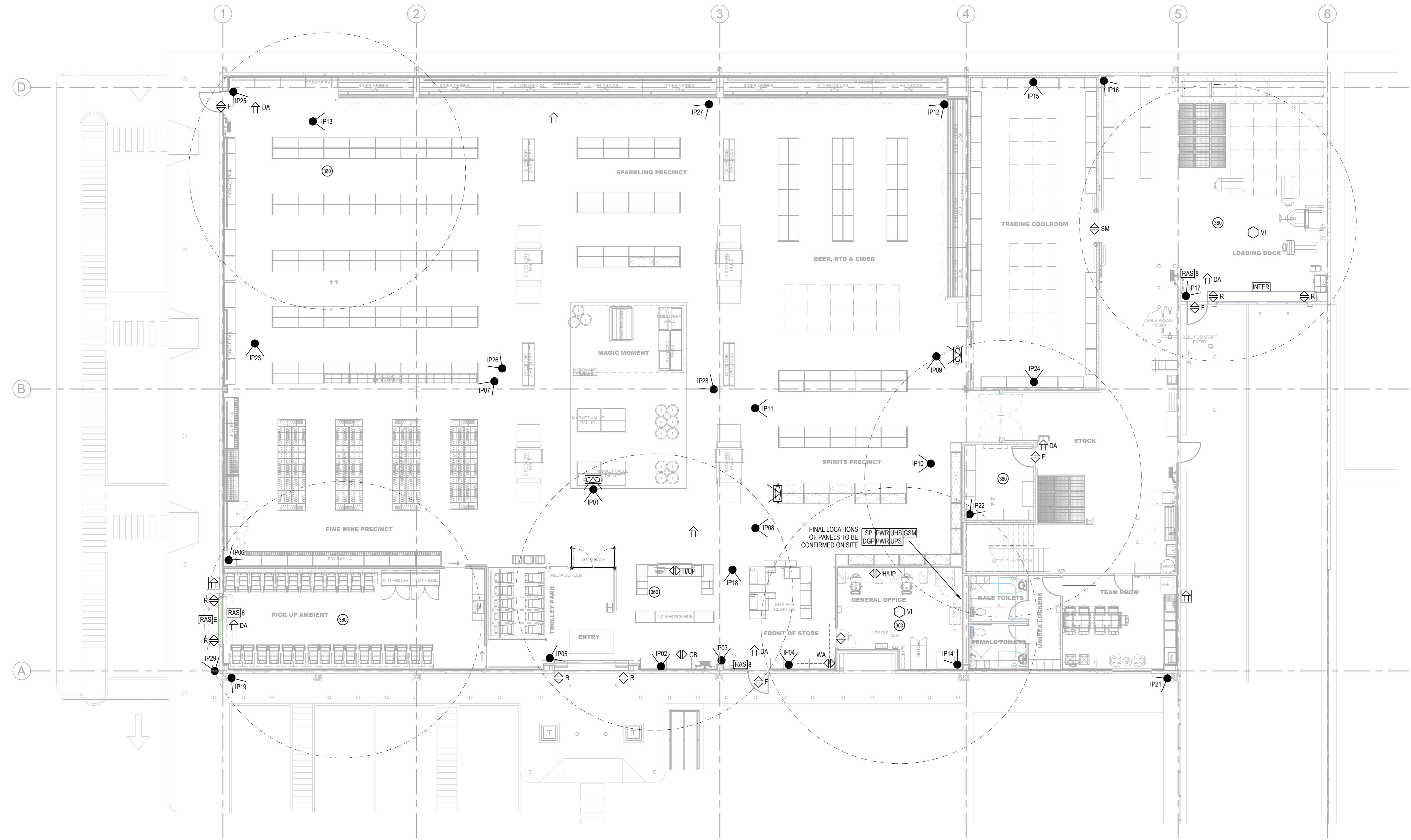
NRV	NETWORK VIDEO RECORDER
IRU	IRU CCTV CABINET
IKRM	IKRM CCTV CABINET
CSW	CCTV SWITCH
POE	POE EXTENDER
ICD	IP CAMERA DECODER
FD	FLOOR DISTRIBUTOR
40"	40" CCTV MONITOR
32"	32" CCTV MONITOR
24"	24" CCTV MONITOR
IC	IR CAMERA
FC	FULL BODY CAMERA
IP360	IP CAMERA 360
IP	IP CAMERA
DC	DUMBY DOME

**CCTV & SECURITY NOTES**

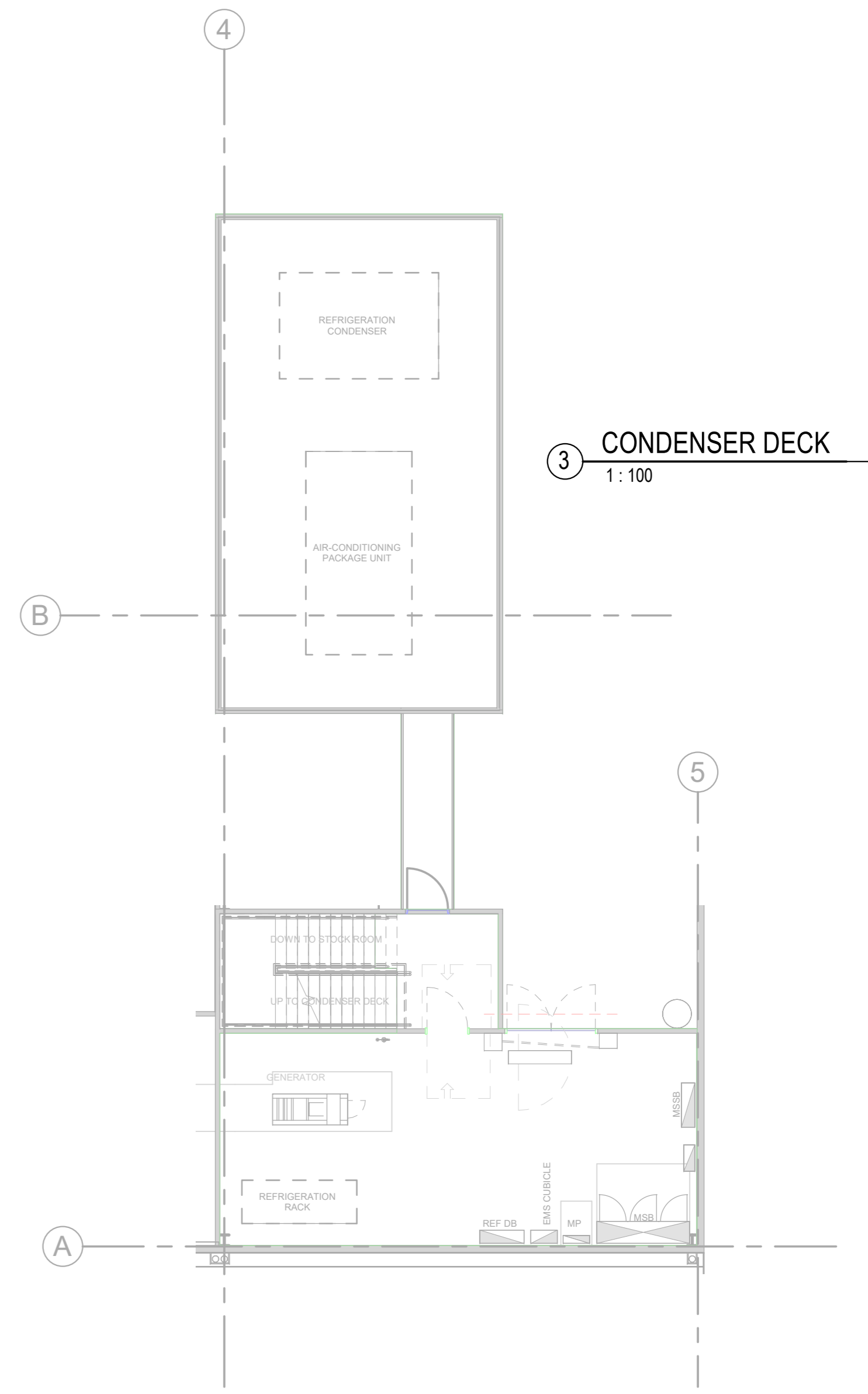
1. SECURITY AND CCTV LAYOUT IS INDICATIVE ONLY. ELECTRICAL CONTRACTOR IS TO REFER TO SECURITY CONTRACTOR'S SITE SPECIFIC DESIGN TO ALLOW FOR POWER AND DATA OUTLETS AND ALL NECESSARY CONCEALED CONDUITS / WALL BOXES.

**ALARM SECURITY LEGEND**

R	ROLLER SHUTTER REED SWITCHES
F	CONCEALED MAGNETIC REED SWITCHES
SM	SURFACE MOUNT REED SWITCHES
DA	DAY ALARM SIREN CW COVER
WA	WIDE ANGLE MOVEMENT DETECTOR
LR	LONG RANGE MOVEMENT DETECTOR
CD	360 CEILING MOVEMENT DETECTOR
EB	ENTRY / EXIT BUZZER
GB	GLASS BREAK
ST	STROBE
HLP	HOLD UP BUTTON
RDU	RADIO DURESS RECEIVER UNIT
IS	INTERNAL SIREN
ES	EXTERNAL SATELLITE SIREN
SP	SECURITY PANEL
DP	DATA GATHERING PANEL
ES	ELECTRIC STRIKE
EL	ELECTRO-MAGNETIC LOCK
IM	INTERCOM MASTER UNIT
ID	INTERCOM DOOR UNIT
AR	ALARM OVER IP BACKUP UNIT
GS	GSM BACKUP UNIT
PSU	POWER SUPPLY UNIT
LCI	LIGHTING CONTROL INTERFACE
RSI	ROLLER SHUTTER INTERFACE UNIT
RA	REFRIGERATION ALARM
UP	UPS INPUT POWER FAILURE
AS1	A AREA REMOTE ARMING STATION
AS2	B AREA REMOTE ARMING STATION
AS3	C AREA REMOTE ARMING STATION
SD	SMOKE DETECTOR
CR	CARD READER



**1 GROUND FLOOR**  
1:100



**2 PLANTROOM**  
1:100

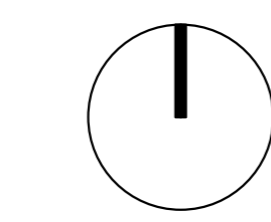


**COMPANY DETAILS**  
 END EVIDENCE - LEVEL 1, 24  
 10/10/2021  
 ALL RIGHTS RESERVED  
 NO PART OF THIS DOCUMENT IS TO BE REPRODUCED OR COPIED  
 IN ANY FORM OR BY ANY MEANS, WITHOUT THE WRITTEN  
 PERMISSION OF THE AUTHOR. ANY UNAUTHORIZED REPRODUCTION  
 OR DISTRIBUTION OF THIS DOCUMENT IS STRICTLY PROHIBITED.  
 SCALE: UNLESS OTHERWISE SPECIFIED, ALL DIMENSIONS  
 ARE TO BE TAKEN FROM THE FACE UNLESS OTHERWISE  
 SPECIFIED.  
 THIS DRAWING IS THE PROPERTY OF ENDEAVOUR GROUP  
 AND IS TO BE USED ONLY FOR THE PROJECT AND SITE  
 SPECIFICALLY IDENTIFIED. IT IS NOT TO BE REPRODUCED,  
 COPIED, OR DISTRIBUTED IN ANY FORM OR BY ANY MEANS,  
 WITHOUT THE WRITTEN PERMISSION OF ENDEAVOUR GROUP.

**REV. REVISION DETAILS**

A	FIRST ISSUE
---	-------------

<b>DATE</b>	<b>BY</b>
20/10/21	CT



**PROJECT ADDRESS:**  
LEVEL 1, 26 WATERLOO STREET, SURRY HILLS NSW

**DRAWING NAME:**  
CCTV & SECURITY LAYOUT

**SCALE:**  
1:100 @ A0  
REGION / STATE:  
ALL

**DOC STAGE:**  
DM A200 / FITOUT

**KIT VERSION:**  
DM 2022 KIT

**STORE No.:**  
0000

**DRAWING No.:**  
DME607

**REVISION:**  
A

**DRAWN BY:**  
EDG

**APPROVED BY:**  
ENDEAVOUR GROUP