

ELECTRICAL DESIGN GROUP

ELECTRICAL BUILDING SERVICES CONSULTANTS

P.O. Box 15, SHERWOOD Q. 4075

Phone: (07) 3278 4375 Fax: (07) 3716 0222

Web Site: www.edg.net.au Email: brisbane@edg.net.au

C3630a - JIMBOOMBA TAVERN

C3630a-0002(A).xls

ELECTRICAL EQUIPMENT SCHEDULE

REVISION A - 24 OCTOBER 2025

THE LIGHT FITTING SUPPLIER CONTACT DETAILS MAY BE AVAILABLE ON THE EDG WEBSITE VIA THE FOLLOWING LINK www.edg.net.au/Links/Lighting.htm					
TYPE	LAMPS	DESCRIPTION	COLOUR / ACCESSORY	CATALOGUE No	REV
S1	10W/M 3000K LED	IP67 LED FLEX SCREW FIXED ONTO THE LEADING EDGE OF THE EXTERNAL WALL AS PER THE ARCHITECTURAL DETAIL. PROVIDE THE STRIP WITH REMOTE DALI DIMMABLE POWER SUPPLIES AS REQUIRED. LOCATE THE POWER SUPPLIES IN A CONCEALED ACCESSIBLE POSITION NOTED ON THE AS CONSTRUCTED DOCUMENTS. CONFIRM THE BEND PLANE (TOP OR SIDE) ON SITE WITH THE ARCHITECT.	WHITE	RAPID LED R2321 OR R2322 + POWER SUPPLY & DALI CONTROLLER	A
S2	14W/M 3000K LED	LED STRIP TAPE FIXED TO THE REAR OF THE TV VIA DOUBLE SIDED HEAT RESISTANT TAPE. PROVIDE THE STRIP WITH REMOTE DALI DIMMABLE POWER SUPPLIES AS REQUIRED. LOCATE THE POWER SUPPLIES IN A CONCEALED ACCESSIBLE POSITION NOTED ON THE AS CONSTRUCTED DOCUMENTS.	WHITE	RAPID LED R2334 AND POWER SUPPLY & DALI CONTROLLER	A
S3	14.4W/M 3000K LED	LED STRIP WITHIN A SCREW FIXED EXTRUSION C/W DIFFUSER MOUNTED ON THE EXPOSED TRUSS AS PER THE ARCHITECTURAL DETAIL. PROVIDE THE STRIP WITH REMOTE DALI DIMMABLE POWER SUPPLIES AS REQUIRED. LOCATE THE POWER SUPPLIES IN A CONCEALED ACCESSIBLE POSITION NOTED ON THE AS CONSTRUCTED DOCUMENTS.	NATURAL	RAPID LED R2334 PLUS ALUMINIUM EXTRUSION AND POWER SUPPLY & DALI CONTROLLER	A
S4	14.4W/M 3000K LED	LED STRIP WITHIN A SCREW FIXED EXTRUSION INTO THE REAR BAR JOINERY C/W DIFFUSER AS PER THE ELEVATION. MOUNT AS PER THE ARCHITECTURAL DETAIL. PROVIDE THE STRIP WITH REMOTE DALI DIMMABLE POWER SUPPLIES AS REQUIRED. LOCATE THE POWER SUPPLIES IN A CONCEALED ACCESSIBLE POSITION NOTED ON THE AS CONSTRUCTED DOCUMENTS.	NATURAL	RAPID LED R2334 PLUS ALUMINIUM EXTRUSION AND POWER SUPPLY & DALI CONTROLLER	A
S5	14.4W/M 3000K LED	LED STRIP WITHIN A SCREW FIXED EXTRUSION C/W DIFFUSER MOUNTED WITHIN THE COUNTER PELMENT AS PER THE ARCHITECTURAL DETAIL. PROVIDE THE STRIP WITH REMOTE DALI DIMMABLE POWER SUPPLIES AS REQUIRED. LOCATE THE POWER SUPPLIES IN A CONCEALED ACCESSIBLE POSITION NOTED ON THE AS CONSTRUCTED DOCUMENTS.	NATURAL	RAPID LED R2334 PLUS ALUMINIUM EXTRUSION AND POWER SUPPLY & DALI CONTROLLER	A



ELECTRICAL DESIGN GROUP

ELECTRICAL BUILDING SERVICES CONSULTANTS

P.O. Box 15, SHERWOOD Q. 4075

Phone: (07) 3278 4375 Fax: (07) 3716 0222

Web Site: www.edg.net.au Email: brisbane@edg.net.au

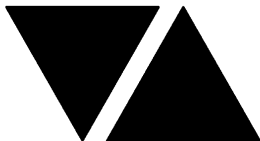
C3630a - JIMBOOMBA TAVERN

C3630a-0002(A).xls

ELECTRICAL EQUIPMENT SCHEDULE

REVISION A - 24 OCTOBER 2025

THE LIGHT FITTING SUPPLIER CONTACT DETAILS MAY BE AVAILABLE ON THE EDG WEBSITE VIA THE FOLLOWING LINK www.edg.net.au/Links/Lighting.htm					
TYPE	LAMPS	DESCRIPTION	COLOUR / ACCESSORY	CATALOGUE No	REV
S6	14.4W/M 3000K LED	LED STRIP WITHIN A SCREW FIXED EXTRUSION C/W DIFFUSER MOUNTED WITHIN THE COUNTER BULKHEAD PELMENT AS PER THE ARCHITECTURAL DETAIL. PROVIDE THE STRIP WITH REMOTE DALI DIMMABLE POWER SUPPLIES AS REQUIRED LOCATE THE POWER SUPPLIES IN A CONCEALED ACCESSIBLE POSITION NOTED ON THE AS CONSTRUCTED DOCUMENTS.	NATURAL	RAPID LED R2334 PLUS ALUMINIUM EXTRUSION AND POWER SUPPLY & DALI CONTROLLER	A
S7	10W/M 3000K LED	IP67 LED FLEX SCREW FIXED ONTO THE FRONT FACE OF THE GARDEN WALL. PROVIDE THE STRIP WITH REMOTE DALI DIMMABLE POWER SUPPLIES AS REQUIRED LOCATE THE POWER SUPPLIES IN A CONCEALED ACCESSIBLE POSITION NOTED ON THE AS CONSTRUCTED DOCUMENTS. CONFIRM THE BEND PLANE (TOP OR SIDE) ON SITE WITH THE ARCHITECT.	WHITE	RAPID LED R2321 OR R2322 + POWER SUPPLY & DALI CONTROLLER	A
PD01	TRAILING EDGE DIMMABLE 240 VOLT 2200K E27 ST64 LED 250 LUMENS +/- 10% 15,000 HOUR LIFE LAMP	520IA X 520 HIGH DECORATIVE PENDANT. CONFIRM THE SUSPENSION HEIGHT ONSITE WITH THE ARCHITECT	RATTAN	FAT SHACK VINTAGE P153-LRG	A
PD02	TRAILING EDGE DIMMABLE 240 VOLT 2200K E27 LED 250 LUMENS +/- 10% 15,000 HOUR LIFE LAMP	500DIA DECORATIVE PENDANT. CONFIRM THE SUSPENSION HEIGHT ONSITE WITH THE ARCHITECT	BLACK CORD	ABOUT SPACE SKYBALL PENDANT 500DIA	A
PD03	TRAILING EDGE DIMMABLE 240 VOLT 2200K E27 LED 250 LUMENS +/- 10% 15,000 HOUR LIFE LAMP	800DIA DECORATIVE PENDANT. CONFIRM THE SUSPENSION HEIGHT ONSITE WITH THE ARCHITECT	BLACK CORD	ABOUT SPACE SKYBALL PENDANT 800DIA	A
PD04	TRAILING EDGE DIMMABLE 240 VOLT 2200K E27 LED 250 LUMENS +/- 10% 15,000 HOUR LIFE LAMP	DECORATIVE PENDANT. CONFIRM THE SUSPENSION HEIGHT ONSITE WITH THE ARCHITECT	BLACK	TBA	A
PD05	TRAILING EDGE DIMMABLE 240 VOLT 2200KB22 A60 LED 250 LUMENS +/- 10% 15,000 HOUR LIFE LAMP	400DIA X 230H DECORATIVE PENDANT. CONFIRM THE SUSPENSION HEIGHT ONSITE WITH THE ARCHITECT	BLACK CORD	FAT SHACK VINTAGE P799-RNDB-SML	A



ELECTRICAL DESIGN GROUP

ELECTRICAL BUILDING SERVICES CONSULTANTS

P.O. Box 15, SHERWOOD Q. 4075

Phone: (07) 3278 4375 Fax: (07) 3716 0222

Web Site: www.edg.net.au Email: brisbane@edg.net.au

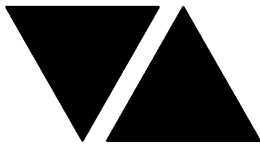
C3630a - JIMBOOMBA TAVERN

C3630a-0002(A).xls

ELECTRICAL EQUIPMENT SCHEDULE

REVISION A - 24 OCTOBER 2025

THE LIGHT FITTING SUPPLIER CONTACT DETAILS MAY BE AVAILABLE ON THE EDG WEBSITE VIA THE FOLLOWING LINK www.edg.net.au/Links/Lighting.htm					
TYPE	LAMPS	DESCRIPTION	COLOUR / ACCESSORY	CATALOGUE No	REV
TL01	9W 3000K LED PER FITTING	SURFACE TRACK C/W FITTINGS AS INDICATED PROVIDE EACH TRACK WITH A REMOTE DALI DIMMABLE DRIVER LOCATED IN A CONCEALED ACCESSIBLE POSITION NOTED ON THE AS CONSTRUCTED DOCUMENTS.	BLACK	LUMEN 8 NIX 45 TRACK AND SOLIS SON145TK09930 FITTINGS DALI DIMMABLE	A
WLE	EXISTING DALI DIMMABLE WALL MOUNTED UPLIGHT TO BE RETAINED AND RESUPPLIED AS INDICATED				A
WL01	TRAILING EDGE DIMMABLE A60 240 VOLT 2700K 400LUMEN +/-10% E27 LED	DECORATIVE 305X115 WALL LIGHT MOUNTED AS PER THE ARCHITECTURAL DETAILS	BLACK CORD	FAT SHACK VINTAGE W1137-LNG-GLD-CLR	A
WL02	TRAILING EDGE DIMMABLE A60 240 VOLT 2700K 400LUMEN +/-10% E27 LED	DECORATIVE 120 X 320 WALL LIGHT MOUNTED AS PER THE ARCHITECTURAL DETAILS	GOLD BRASS	FAT SHACK VINTAGE FAT SHACK VINTAGE W1137-LNG-GLD-CLR	A
WL03	TRAILING EDGE DIMMABLE A60 240 VOLT 2700K 400LUMEN +/-10% E27 LED	DECORATIVE 95 X 140 WALL LIGHT MOUNTED AS PER THE ARCHITECTURAL DETAILS	BRASS	FAT SHACK VINTAGE W761-BRS	A
WL10		REPLACE THE EXISTING EXTERNAL FITTING WITH AN IP56 RATED UP/ DOWN LIGHT	BLACK	ABOUT SPACE PILLAR UP/DOWN	A
WL11	TRAILING EDGE DIMMABLE GU10 240 VOLT 2700K 200 LUMEN +/-10% E27 LED	DECORATIVE 156X 139 WALL LIGHT MOUNTED AS PER THE ARCHITECTURAL DETAILS	BLACK	LIGHTING COLLECTIVE FNOR017WL-001	A
WL12	TRAILING EDGE DIMMABLE A60 240 VOLT 2700K 400LUMEN +/-10% E27 LED	DECORATIVE 250 X 260 WALL LIGHT MOUNTED AS PER THE ARCHITECTURAL DETAILS	BLACK	FAT SHACK VINTAGE W1033-ABRZ	A
RD01	12W 3000K LED	RECESSED DOWNLIGHT C/W 24 DEG BEAM REMOTE DALI DIMMABLE DRIVER	BLACK	RAPID R1077-WH-12W WW-DALI BLACK	A
RD02	12W 3000K LED	RECESSED DOWNLIGHT C/W 24 DEG BEAM REMOTE DALI DIMMABLE DRIVER	WHITE	RAPID R1077-WH-12W WW-DALI	A
RD03	12W 3000K LED	RECESSED DOWNLIGHT C/W 24 DEG BEAM REMOTE DALI DIMMABLE DRIVER	BLACK	RAPID R1077-WH-12W WW-DALI BLACK	A



ELECTRICAL DESIGN GROUP

ELECTRICAL BUILDING SERVICES CONSULTANTS

P.O. Box 15, SHERWOOD Q. 4075

Phone: (07) 3278 4375 Fax: (07) 3716 0222

Web Site: www.edg.net.au Email: brisbane@edg.net.au

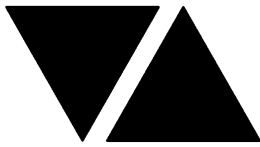
C3630a - JIMBOOMBA TAVERN

C3630a-0002(A).xls

ELECTRICAL EQUIPMENT SCHEDULE

REVISION A - 24 OCTOBER 2025

THE LIGHT FITTING SUPPLIER CONTACT DETAILS MAY BE AVAILABLE ON THE EDG WEBSITE VIA THE FOLLOWING LINK www.edg.net.au/Links/Lighting.htm					
TYPE	LAMPS	DESCRIPTION	COLOUR / ACCESSORY	CATALOGUE No	REV
RD04	12W 3000K LED	RECESSED DOWNLIGHT C/W 24 DEG BEAM REMOTE DRIVER CIRCUIT AND SWITCH WITH THE EXISTING ADJACENT AMENITY LIGHTS	WHITE	RAPID R1077-WH-12W-WW-DALI	A
SL01		SPOT LIGHT	TBA	TBA	A
L1	EXISTING DALI DIMMABLE RECESSED DOWNLIGHT TO BE RETAINED AND RESUPPLIED AS INDICATED				A
L2	EXISTING DALI DIMMABLE PENDANT TO BE RETAINED AND RESUPPLIED AS INDICATED				A
G1	GAMING BASE KICK LED STRIP LIGHTS TO BE PROVIDED AS PART OF THE GAMING BASE AND CONNECTED BY THE GAMING ELECTRICIAN.				A
FS01	1W LED AT 500 CENTRES	FESTOON LIGHTS WITH NEW 24V DC IP65 FESTOON LIGHTING TO BE FIXED TO A 316 STAINLESS STEEL WIRE SUPPORT SYSTEM. SUPPLY THE NEW FESTOON LIGHTS VIA REMOTE DALI DIMMABLE DRIVERS IN A CONCEALED ACCESSIBLE POSITIONS NOTED ON THE AS CONSTRUCTED DOCUMENTS. CONFIRM THE LENGTH AND POSITION ON SITE ENSURE THE FESTOON LIGHTS ARE LOWER THAN THE ADJACENT CEILING FANS	BLACK CABLE AND FIXINGS 316 STAINLESS STEEL SUPPORT AND FIXINGS	FIRE FLY FFC-LS-50-24VE27-BK	A
POLE	PROVIDE A NEW 150 DIA HOT DIPPED GALVANIZED POLE C/W REINFORCED FOOTING TO SUPPORT THE FESTOON LIGHTING. CONFIRM THE POLE HEIGHT ON SITE WITH THE ARCHITECT. ALLOW A POLE UP TO 3M IN HEIGHT.				A
E1	LED	EMERGENCY LIGHT: RECESSED NON-MAINTAINED EMERGENCY LIGHT. AS2293 CLASSIFICATION C0-D40 - C90-D40.	WHITE	CLEVERTRONICS LLIFE	A
E2	LED	EMERGENCY LIGHT: RECESSED NON-MAINTAINED EMERGENCY LIGHT. AS2293 CLASSIFICATION C0-D40 - C90-D40.	BLACK	CLEVERTRONICS LLIFEBLK	A
E3	LED	EMERGENCY LIGHT: SURFACE MOUNTED NON-MAINTAINED EMERGENCY LIGHT. AS2293 CLASSIFICATION C0-D40 - C90-D40.	WHITE	CLEVERTRONICS LLIFESM	A
E4	LED	EXIT LIGHT: MAINTAINED 24M VIEWING DISTANCE EXIT LIGHT C/W DIFFUSERS & DIRECTIONAL ARROWS AS SHOWN. CEILING SURFACE MOUNT OR WALL MOUNT BETWEEN 2100mm & 2700mm AFFL IF THERE IS NO VERTICAL SURFACE TO MOUNT THE FITTING ON WITHIN THIS RANGE CONFIRM THE MOUNTING HEIGHT WITH THE ENGINEER. AS2293 CLASSIFICATION C0-D1.25- C90-D2	BLACK	CLEVERTRONICS LUBPRO-SM-BLK	A



ELECTRICAL DESIGN GROUP

ELECTRICAL BUILDING SERVICES CONSULTANTS

P.O. Box 15, SHERWOOD Q. 4075

Phone: (07) 3278 4375 Fax: (07) 3716 0222

Web Site: www.edg.net.au Email: brisbane@edg.net.au

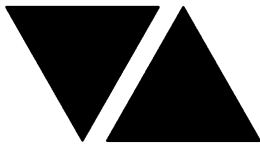
C3630a - JIMBOOMBA TAVERN

C3630a-0002(A).xls

ELECTRICAL EQUIPMENT SCHEDULE

REVISION A - 24 OCTOBER 2025

THE LIGHT FITTING SUPPLIER CONTACT DETAILS MAY BE AVAILABLE ON THE EDG WEBSITE VIA THE FOLLOWING LINK www.edg.net.au/Links/Lighting.htm					
TYPE	LAMPS	DESCRIPTION	COLOUR / ACCESSORY	CATALOGUE No	REV
EX	LED	EXIT LIGHT: MAINTAINED 24M VIEWING DISTANCE EXIT LIGHT C/W DIFFUSERS & DIRECTIONAL ARROWS AS SHOWN. CEILING SURFACE MOUNT OR WALL MOUNT BETWEEN 2100mm & 2700mm AFFL IF THERE IS NO VERTICAL SURFACE TO MOUNT THE FITTING ON WITHIN THIS RANGE CONFIRM THE MOUNTING HEIGHT WITH THE ENGINEER. AS2293 CLASSIFICATION C0-D1.25- C90-D2	BLACK	CLEVERTRONICS LUBPRO-SM	A
BL01	2200K LED	TREE BUD LIGHTS. ALLOW A PC SUM FOR THE SUPPLY AND INSTALLATION OF EACH BL FITTING.	BLACK	ALLOW A PC SUM OF \$10,000.00 PLUS GST FOR THE SUPPLY OF EACH BL FITTING	A
HL01	100W IR LAMP	HEAT LAMP PENDANT TO BE PROVIDED WITH AN INDIVIDUAL SWITCH. CONFIRM THE SUSPENSION HEIGHT ON SITE WITH THE ARCHITECT.	ANTIQUE COPPER	HATCO DL-2100	A
CHANNEL x		CONTROL CHANNEL WITH A NUMERICAL REFERENCE. REFER TO THE POWER AND LIGHTING CONTROL SCHEMATIC / SCHEDULE			A
ONE-WAY LIGHT SWITCH		ONE-WAY LIGHT SWITCH C/W CIRCUIT IDENTIFICATION ON THE FACEPLATE BEHIND THE SURROUND MOUNTED AT 1000mm AFFL UNLESS NOTED OTHERWISE.	WHITE UNLESS NOTED AS BLACK (BK)	CLIPSAL C2000 SERIES FACEPLATE	A
LIGHTING CONTROL SWITCH PANEL (SPx)		6-BUTTON PROGRAMMABLE SWITCH PANEL C/W CENTRAL LCD DISPLAY MOUNTED AT 1000mm AFFL UNLESS NOTED OTHERWISE.	ALUMINIUM	DYNALITE ANTUMBRA DISPLAY	A
SINGLE POWER OUTLET		SINGLE POWER OUTLET C/W CIRCUIT IDENTIFICATION ON THE FACEPLATE BEHIND THE SURROUND MOUNT AT 300mm AFFL U.N.O. RATING 10A U.N.O.	WHITE UNLESS NOTED AS BLACK (BK)	CLIPSAL C2000 SERIES	A
DOUBLE POWER OUTLET		DOUBLE POWER OUTLET C/W CIRCUIT IDENTIFICATION ON THE FACEPLATE BEHIND THE SURROUND MOUNT AT 300mm AFFL U.N.O. RATING 10A U.N.O.	WHITE UNLESS NOTED AS BLACK (BK)	CLIPSAL C2000 SERIES	A
GAMING TAB OUTLET		GAMING / TAB OUTLETS PROVIDED BY THE GAMING ELECTRICIAN. REFER TO THE NOTES FOR ADDITIONAL DETAILS ON THE SCOPE.			A
SIGN CONNECTION		COORDINATE THE LOCATION AND CONNECTION WITH THE SIGN CONTRACTOR ENSURING THE CONNECTION ARE PROVIDED WITH APPROPRIATE WEATHER PROTECTION AND ARE CONCEALED FROM VIEW.			A
SINGLE-PHASE ISOLATOR		SINGLE-PHASE WEATHERPROOF ISOLATOR. MOUNT AT 1350mm AFFL U.N.O. RATING 20A U.N.O. CONNECT TO EQUIPMENT VIA FLEXIBLE CONDUIT.	-	CLIPSAL WHT20	A



ELECTRICAL DESIGN GROUP

ELECTRICAL BUILDING SERVICES CONSULTANTS

P.O. Box 15, SHERWOOD Q. 4075

Phone: (07) 3278 4375 Fax: (07) 3716 0222

Web Site: www.edg.net.au Email: brisbane@edg.net.au

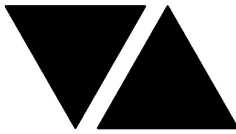
C3630a - JIMBOOMBA TAVERN

C3630a-0002(A).xls

ELECTRICAL EQUIPMENT SCHEDULE

REVISION A - 24 OCTOBER 2025

THE LIGHT FITTING SUPPLIER CONTACT DETAILS MAY BE AVAILABLE ON THE EDG WEBSITE VIA THE FOLLOWING LINK www.edg.net.au/Links/Lighting.htm					
TYPE	LAMPS	DESCRIPTION	COLOUR / ACCESSORY	CATALOGUE No	REV
THREE-PHASE ISOLATOR		THREE-PHASE WEATHERPROOF ISOLATOR. MOUNT AT 1350mm AFFL U.N.O. RATING 20A U.N.O. CONNECT TO EQUIPMENT VIA FLEXIBLE CONDUIT.	-	CLIPSAL WHT35	A
LED SCREEN AV CONNECTION (AV)		PROVIDE EACH AV LED SCREEN POWER SUPPLY CONNECTION AS FOUR OF 413s WITH SUFFICIENT CABLE TO ALLOW THEM TO BE CONNECTED AND PUSHED BACK INTO THE WALL. COORDINATE THE HEIGHT OF THE CONNECTIONS / 413s WITH THE LED SCREEN SUPPLIER.			A
FLOOR BOX TYPE 1 (FB1)		FLUSH RECESSED FLOOR BOX C/W INTEGRAL DOUBLE 10 AMP GPO	STAINLESS STEEL	ECD FB1SDR	A
DB-L		PROVIDE A NEW DISTRIBUTION BOARD DB-L AS PER THE DB-L SCHEDULE AND NOTES.			A
DB-G		EXISTING DISTRIBUTION BOARD DB-G TO REMAIN. ANY EXISTING CIRCUITS THAT BECOME REDUNDANT DUE TO THE WORKS ARE TO BE REMOVED.			A
DB-T		EXISTING DISTRIBUTION BOARD DB-T TO REMAIN. ANY EXISTING CIRCUITS THAT BECOME REDUNDANT DUE TO THE WORKS ARE TO BE REMOVED.			A
DB-K		EXISTING DISTRIBUTION BOARD DB-K TO REMAIN. ANY EXISTING CIRCUITS THAT BECOME REDUNDANT DUE TO THE WORKS ARE TO BE REMOVED.			A
AC-2		EXISTING DISTRIBUTION BOARD AC-2 TO REMAIN. ANY EXISTING CIRCUITS THAT BECOME REDUNDANT DUE TO THE WORKS ARE TO BE REMOVED. PROVIDE A NEW MCB AS PER THE AC-2 - P1 CIRCUIT DESCRIPTION AND MISSING POLE FILLERS			A
AC-2-P1		PROVIDE CIRCUIT AC-2 - P1 AS A THREE PHASE 20 AMP RCBO PROTECTED 2.5MM CIRCUIT TO THE ROOF MOUNTED AIR CONDITIONING CONDENSOR ISOLATOR.			A
AC-3		EXISTING DISTRIBUTION BOARD AC-3 TO REMAIN. ANY EXISTING CIRCUITS THAT BECOME REDUNDANT DUE TO THE WORKS ARE TO BE REMOVED.			A
MDB		EXISTING HOTEL MAIN DISTRIBUTION BOARD TO REMAIN. PROVIDE A NEW MCCB TO SUPPLY DB-L AS PER THE NOTES.			A
DB-TAB		EXISTING DISTRIBUTION BOARD DB-Tab TO REMAIN. ANY EXISTING CIRCUITS THAT BECOME REDUNDANT DUE TO THE WORKS ARE TO BE REMOVED.			A
DB-CJB		GAMING DISTRIBUTION BOARD TO BE PROVIDED BY GAMING ELECTRICIAN			A



ELECTRICAL DESIGN GROUP

ELECTRICAL BUILDING SERVICES CONSULTANTS

P.O. Box 15, SHERWOOD Q. 4075

Phone: (07) 3278 4375 Fax: (07) 3716 0222

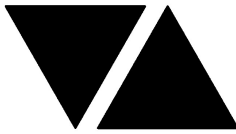
Web Site: www.edg.net.au Email: brisbane@edg.net.au

C3630a - JIMBOOMBA TAVERN

LIGHTING CONTROL SCHEDULE

REVISION A - 24 OCTOBER 2025

MISCELLANEOUS EQUIPMENT				REV	
ITEM	DESCRIPTION			A	
SP1	AS DETAILED IN THE EQUIPMENT SCHEDULE 6-BUTTON PROGRAMMABLE SWITCH PANEL C/W CENTRAL LCD DISPLAY DYNALITE ANTUMBRA DISPLAY ALUMINIUM			A	
SP2	AS DETAILED IN THE EQUIPMENT SCHEDULE 6-BUTTON PROGRAMMABLE SWITCH PANEL C/W CENTRAL LCD DISPLAY DYNALITE ANTUMBRA DISPLAY ALUMINIUM			A	
SP3	AS DETAILED IN THE EQUIPMENT SCHEDULE 6-BUTTON PROGRAMMABLE SWITCH PANEL C/W CENTRAL LCD DISPLAY DYNALITE ANTUMBRA DISPLAY ALUMINIUM			A	
SP4	AS DETAILED IN THE EQUIPMENT SCHEDULE 6-BUTTON PROGRAMMABLE SWITCH PANEL C/W CENTRAL LCD DISPLAY DYNALITE ANTUMBRA DISPLAY ALUMINIUM			A	
PE CELL	PROGRAMMABLE PE CELL DUS 90CS CONFIRM THE LOCATION ON SITE WITH THE ARCHITECT			A	
TIME CLOCK	PROGRAMMABLE TIME CLOCK ENVISION GATEWAY PDEG LOCATED IN DB-A			A	
CONTROL MODULE 1				A	
TYPE:		DYNALITE DDMC802		A	
DESCRIPTION		8CH MODULAR CONTROLLER		A	
LOCATION		DIN RAIL MOUNTED WITHIN DB-L		A	
BUS:		A		A	
CHANNEL	CONTROL	DESCRIPTION		A	
		LOCATION	CIRCUIT	USE	A
1	DGTM202	BISTRO	DB-L -L1	PD01	A
2		SPORTS BAR		PD04	A
3	DGTM202	GAMING		PD02	A
4		GAMING		PD03	A
5	DGTM202	ENTRY		PD05	A
6					A
7				A	
8				A	



ELECTRICAL DESIGN GROUP

ELECTRICAL BUILDING SERVICES CONSULTANTS

P.O. Box 15, SHERWOOD Q. 4075

Phone: (07) 3278 4375 Fax: (07) 3716 0222

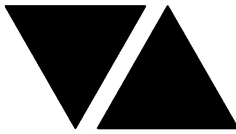
Web Site: www.edg.net.au Email: brisbane@edg.net.au

C3630a - JIMBOOMBA TAVERN

LIGHTING CONTROL SCHEDULE

REVISION A - 24 OCTOBER 2025

CONTROL MODULE 2					A
TYPE:		DYNALITE DDR1220FR-GL			A
DESCRIPTION		12CH 20 A FEEDTHROUGH RELAY CONTROLLER			A
LOCATION		DIN RAIL MOUNTED WITHIN DB-L			A
BUS:		A			A
CHANNEL	CONTROL	DESCRIPTION			A
		LOCATION	CIRCUIT	USE	A
9	SWITCHED	GAMING	4CHANNEL CONTACTOR	SIGNAGE	A
10	SWITCHED	GAMING DOSA	DB-L -L2	WL10	A
11	SWITCHED	GAMING ENTRY	DB-L -L2	WL10	A
12	SWITCHED	EXTERNAL	DB-L -L2	WL11	A
13	SWITCHED	EXTERNAL	DB-L -L2	SL01	A
14	SWITCHED	EXTERNAL	DB-L -L2	WL10	A
15	SWITCHED	EXTERNAL	DB-L -L3	WL10	A
16	SWITCHED	EXTERNAL	DB-L -L3	WL12	A
17	SWITCHED	EXTERNAL	DB-L -L3	SIGNAGE	A
18	SWITCHED	EXTERNAL	DB-L -L3	BL	A
19	SWITCHED	GAMING	2CHANNEL CONTACTOR	G1	A
20					A
CONTROL MODULE 3					A
TYPE:		DYNALITE DDBC1200			A
DESCRIPTION		12CH BOARD CAST DALI CONTROLLER			A
LOCATION		DIN RAIL MOUNTED WITHIN DB-L			A
BUS:		A			A
CHANNEL	CONTROL	DESCRIPTION			A
		LOCATION	CIRCUITS	USE	A
21	DALI DIM	EXTERNAL	DB-L- L5	FS01	A
22	DALI DIM	EXTERNAL	DB-L- L4	FS01	A
23	DALI DIM	EXTERNAL	DB-L- L6	L1	A
24	DALI DIM	EXTERNAL	DB-L- L6	RD03	A
25	DALI DIM		DB-L- L7	S1	A
26	DALI DIM	KIDS	DB-L- L7	L1	A
27	DALI DIM	BISTRO TERRACE	DB-L- L7	L2	A
28	DALI DIM	EXTERNAL	DB-L- L7	S2	A
29	DALI DIM	EXTERNAL	DB-L- L6	S7	A
30					A
31					A
32					A
CONTROL MODULE 4					A
TYPE:		DYNALITE DDBC1200			A
DESCRIPTION		12CH BOARD CAST DALI CONTROLLER			A
LOCATION		DIN RAIL MOUNTED WITHIN DB-L			A
BUS:		A			A
CHANNEL	CONTROL	DESCRIPTION			A
		LOCATION	CIRCUITS	USE	A
33	DALI DIM	GAMING	DB-L- L8	S2	A
34	DALI DIM	GAMING	DB-L- L8	RD03	A
35	DALI DIM	GAMING	DB-L- L8	RD02	A
36	DALI DIM	GAMING	DB-L- L8	RD02	A
37	DALI DIM	ENTRY	DB-L- L9	RD02	A
38	DALI DIM	BISTRO	DB-L- L9	RD02	A
39	DALI DIM	BISTRO	DB-L- L10	WLE	A
40	DALI DIM	BISTRO	DB-L- L10	S6	A



ELECTRICAL DESIGN GROUP

ELECTRICAL BUILDING SERVICES CONSULTANTS

P.O. Box 15, SHERWOOD Q. 4075

Phone: (07) 3278 4375 Fax: (07) 3716 0222

Web Site: www.edg.net.au Email: brisbane@edg.net.au

C3630a - JIMBOOMBA TAVERN

LIGHTING CONTROL SCHEDULE

REVISION A - 24 OCTOBER 2025

41	DALI DIM	BISTRO	DB-L- L10	S2	A
42	DALI DIM	BISTRO	DB-L- L10	S5	A
43	DALI DIM	GAMING	DB-L- L8	S4	A
44					A
CONTROL MODULE 5					SL01
TYPE:		DYNALITE DDBC1200			A
DESCRIPTION		12CH BOARD CAST DALI CONTROLLER			A
LOCATION		DIN RAIL MOUNTED WITHIN DB-L			A
BUS:		A			A
CHANNEL	CONTROL	DESCRIPTION			A
		LOCATION	CIRCUITS	USE	A
45	DALI DIM	BISTRO	DB-L- L11	S4	A
46	DALI DIM	BISTRO	DB-L- L11	RD02	A
47	DALI DIM	BISTRO	DB-L- L11	RD02	A
48	DALI DIM	FUNCTION	DB-L- L12	RD02	A
49	DALI DIM	SPORTS BAR	DB-L- L12	RD02	A
50	DALI DIM	SPORTS BAR	DB-L- L12	RD01	A
51	DALI DIM	SPORTS BAR	DB-L- L12	S4	A
52	DALI DIM	SPORTS BAR	DB-L- L12	S2	A
53	DALI DIM	SPORTS BAR	DB-L- L12	S5	A
54	DALI DIM	SPORTS BAR	DB-L- L12	S6	A
55	DALI DIM	BISTRO	DB-L- L11	S7	A
56					A
CONTROL MODULE 6					A
TYPE:		DYNALITE DDBC1200			A
DESCRIPTION		12CH BOARD CAST DALI CONTROLLER			A
LOCATION		DIN RAIL MOUNTED WITHIN DB-L			A
BUS:		A			A
CHANNEL	CONTROL	DESCRIPTION			A
		LOCATION	CIRCUIT	USE	A
57	DALI DIM	SPORTS BAR	DB-L- L13	TL01E	A
58	DALI DIM	SPORTS BAR	DB-L- L13	S3	A
59	DALI DIM	SPORTS BAR	DB-L- L13	RD03	A
60	DALI DIM	SPORTS BAR	DB-L- L13	S2	A
61					A
62					A
63					A
64					A
65					A
66					A
67					A
68					A



ELECTRICAL DESIGN GROUP

ELECTRICAL BUILDING SERVICES CONSULTANTS

P.O. Box 15, SHERWOOD Q. 4075

Phone: (07) 3278 4375

Website: www.edg.net.au Email: brisbane@edg.net.au

C3630a - JIMBOOMBA TAVERN








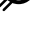
C3630a-0005(A).xls

DISTRIBUTION BOARD DB-L

REVISION A - 24 OCTOBER 2025

FAULT CURRENT: 6KA							REV
MAIN SWITCH: 250 NON AUTO LOAD BREAK							A
CHASSIS SIZE: 48 POLE							A
SOURCE: MDB							A
CHASSIS RATING: 250A							A
SUPPLY CABLE: 4C+E 25							A
PHASES: 3							A
REFER TO THE EQUIPMENT SCHEDULE AND NOTES FOR ADDITIONAL REQUIREMENTS. PROVIDE THE DB WITH A FULL WIDTH EMPTY DIN RAIL TO ACCOMMODATE FUTURE CONTACTORS AND CONTROLS IN ADDITION TO THE CONTROLS INCLUDING THE DYNALITE EQUIPMENT PROVIDED AS PART OF THE INITIAL WORKS. PROVIDE THE DB WITH AN AS2293 EMERGENCY LIGHTING CONTROL SYSTEM TO CONTROL THE ASSOCIATED EMERGENCY LIGHTS. PROVIDE THE DB WITH SURGE PROTECTION. ENSURE THE SCHEDULE INCLUDES THE CIRCUIT USE AND LOCATION.							A
CIRC	PH	CIRCUIT BREAKER (amps)	CONTROL EQUIPMENT	CABLE SIZE (mm ²)	LOCATION	CIRCUIT USE	A
P1	1	20	RCBO	2.5	BISTRO BAR	GLASS WASHER	A
P2	1	20	RCBO	2.5	BISTRO	ICE CREAM	A
P3	1	20	RCBO	2.5	SPORTS BAR	TV	A
P4	1	20	RCBO	2.5	SPORTS BAR	LED SCREEN	A
P5	1	20	RCBO	2.5	SPORTS BAR	LED SCREEN	A
P6	1	20	RCBO	2.5	EXTERNAL	LED SCREEN	A
P7	1	20	RCBO	2.5	EXTERNAL	LED SCREEN	A
P8	1	20	RCBO	2.5	EXTERNAL	LED SCREEN	A
L1	1	20	RCBO	2.5		LIGHTING	A
L2	1	20	RCBO	2.5		LIGHTING	A
L3	1	20	RCBO	2.5		LIGHTING	A
L4	1	20	RCBO	2.5		LIGHTING	A
L5	1	20	RCBO	2.5		LIGHTING	A
L6	1	20	RCBO	2.5		LIGHTING	A
L7	1	20	RCBO	2.5		LIGHTING	A
L8	1	20	RCBO	2.5		LIGHTING	A
L9	1	20	RCBO	2.5		LIGHTING	A
L10	1	20	RCBO	2.5		LIGHTING	A
L11	1	20	RCBO	2.5		LIGHTING	A
L12	1	20	RCBO	2.5		LIGHTING	A
L13	1	20	RCBO	2.5		LIGHTING	A
L14	1	20	RCBO	2.5	BISTRO BAR	HEAT LAMPS	A
							A
							A

LEGEND

-  ELECTRICAL SERVICES SWITCHBOARD.
-  SWITCHBOARD / CONTROL PANEL NOT PROVIDED AS PART OF THE ELECTRICAL SUBCONTRACT.
-  SINGLE POWER OUTLET.
-  DOUBLE POWER OUTLET.
-  GAMING / TAB OUTLET BY GAMING ELECTRICIAN.
-  SIGNAGE CONNECTION.
-  SINGLE PHASE ISOLATOR.
-  THREE PHASE ISOLATOR.

CONDUIT ROUTE.

FBx ELECTRICAL FLOOR BOX, TYPE AS NOTED.

AV LED SCREEN AV POWER CONNECTION.

SPx LIGHTING CONTROL SWITCHPANEL, TYPE x.

 ONE-WAY LIGHT SWITCH.

 CIRCUIT LINE.

 SWITCH LINE.

DB-x - Py POWER CIRCUIT DESIGNATION.
DENOTES DB AND CIRCUIT.

 LIGHTING CONTROL CHANNEL REFERENCE.

 ELECTRICAL EQUIPMENT AS NOTED.

 REFER TO DETAIL NOTED FOR THE AREA SHOWN HATCHED.
ADDITIONAL OUTLETS & FITTINGS MAY BE SHOWN ON DETAIL.

 Sx: LED JOINERY / CEILING STRIP LIGHT, TYPE AS NOTED.

E1  E1: GENERAL CEILING RECESSED LED EMERGENCY LIGHT, WHITE.

E2  E2: GENERAL CEILING RECESSED LED EMERGENCY LIGHT, BLACK.

E3  E3: GENERAL SURFACE MOUNT LED EMERGENCY LIGHT, WHITE.

E4  E4: EMERGENCY LED EXIT LIGHT, BLACK.

 EX: EMERGENCY LED EXIT LIGHT, BLACK.

PD01  PD01: DECORATIVE SUSPENDED PENDANT.

PD02  PD02: DECORATIVE SUSPENDED PENDANT.

PD03  PD03: DECORATIVE SUSPENDED PENDANT.

PD04  PD04: DECORATIVE SUSPENDED PENDANT.

PD05  PD05: DECORATIVE SUSPENDED PENDANT.

TL01  TL01: SURFACE TRACK LIGHTS, BLACK.

WLE  WLE: EXISTING WALL LIGHT TO BE RETAINED.

WL01  WL01: DECORATIVE WALL LIGHT.

WL02  WL02: DECORATIVE WALL LIGHT.

WL03  WL03: DECORATIVE WALL LIGHT.

WL10  WL10: EXISTNG WALL LIGHT REPLACED WITH UP / DOWN LIGHT.

WL11  WL11: DECORATIVE WALL LIGHT.

WL12  WL12: DECORATIVE WALL LIGHT.

LEGEND

RD01  RD01: RECESSED DOWNLIGHT, BLACK.

RD02  RD02: RECESSED DOWNLIGHT, WHITE.

RD03  RD03: RECESSED DOWNLIGHT, BLACK.

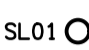
RD04  RD04: RECESSED DOWNLIGHT, WHITE.

BL01  BL01: TREE BUD LIGHTING.

 G1: GAMING MACHINE BASE KICK LED STRIP LIGHT.

 FS01: FESTOON LIGHTS FIXED TO STAINLESS STEEL WIRE SUPPORT.

HL01  HL01: HEAT LAMP PENDANT.

SL01  SL01: SPOT LIGHT.

L1  L1: EXISTING RECESSED DOWNLIGHT.

L2  L2: EXISTING PENDANT.

EQUIPMENT:

TEST – TEST PUSH BUTTON MOUNTED ON THE DISTRIBUTION BOARD ESCUTCHEON.

RESET – RESET PUSH BUTTON MOUNTED ON THE DISTRIBUTION BOARD ESCUTCHEON.

LAMP – AMBER TEST INDICATING LAMP MOUNTED ON THE DISTRIBUTION BOARD ESCUTCHEON.

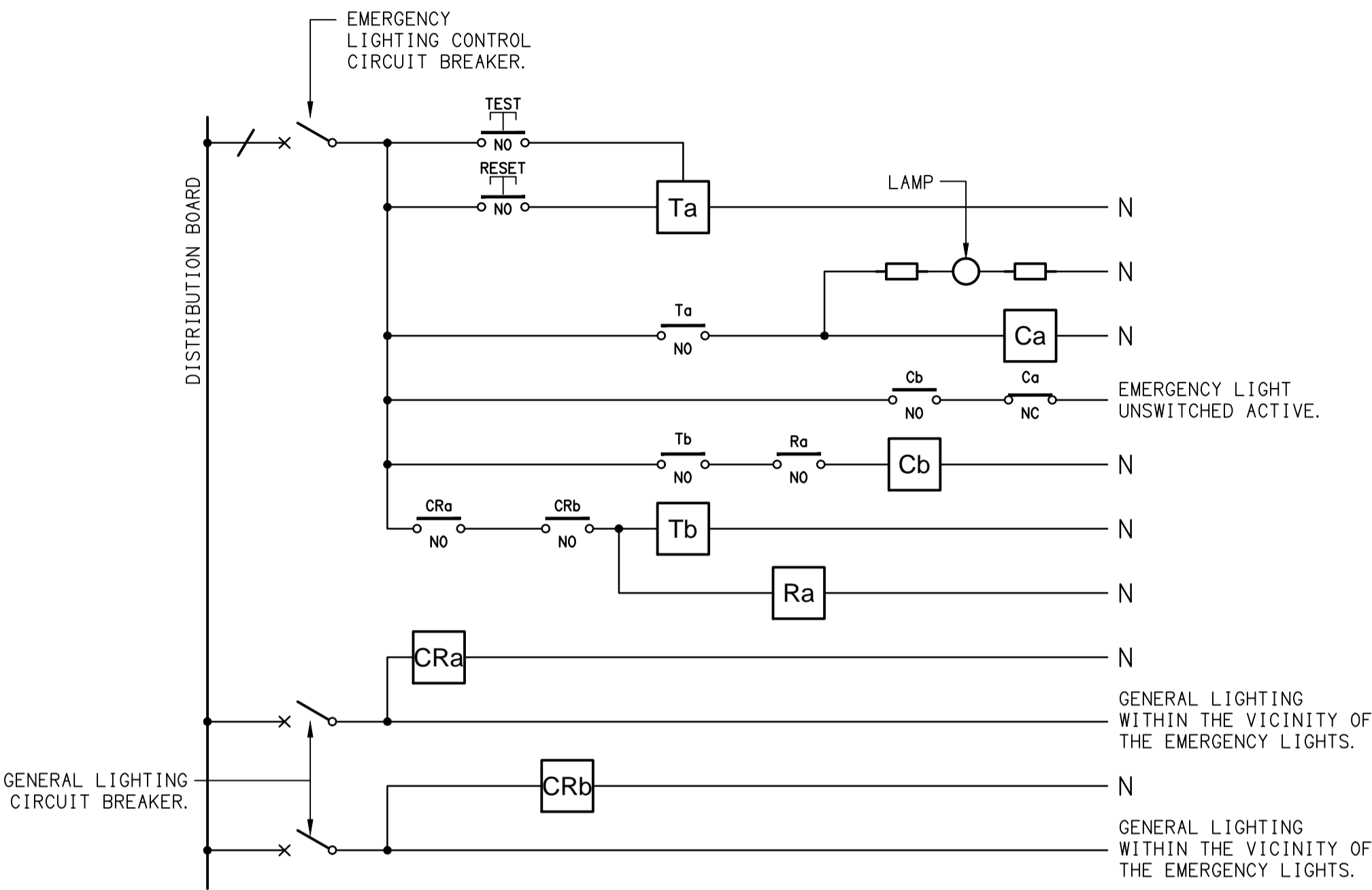
Ta – ADJUSTABLE 0-3 HOUR TIMED RELAY.

Tb – 15 MINUTE RUN-ON TIMER TO OPERATE UPON THE RETURN OF MAINS POWER.

Cx – CONTACTOR x.

CRx – CONTROL RELAY x.

Rx – RELAY x.



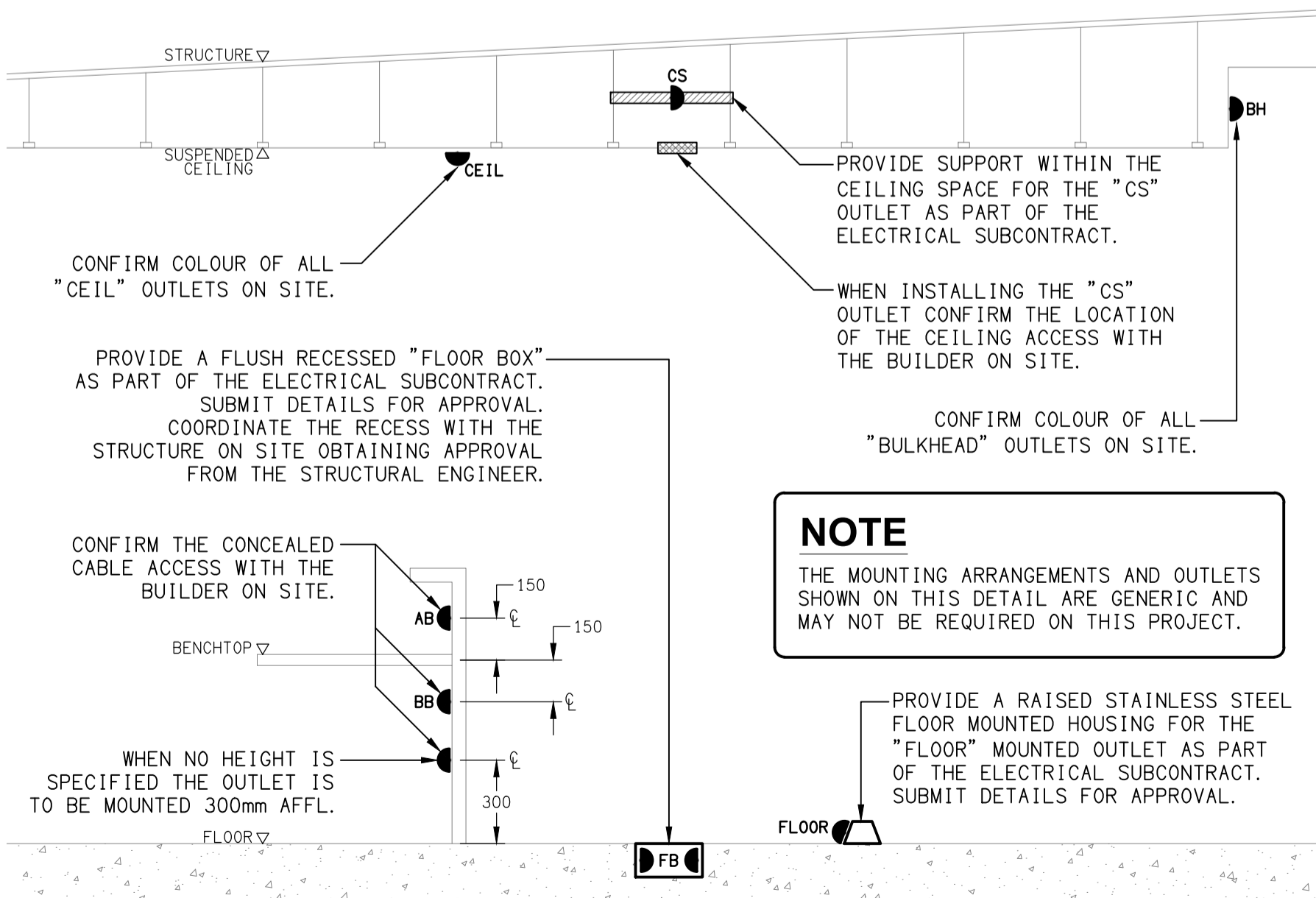
NOTES

1. THE EMERGENCY LIGHT UNSWITCHED ACTIVE / GENERAL LIGHTING SWITCHED ACTIVE CIRCUIT ARRANGEMENT AND CONTROL IS TYPICAL FOR ALL CIRCUITS SUPPLYING EMERGENCY LIGHTS.

2. PROVIDE ADDITIONAL CONTROL RELAYS (CRx) CONFIGURED AS PER CRa AND CRb FOR ALL ADDITIONAL LIGHTING CIRCUITS THAT SUPPLY LIGHTS IN THE VICINITY OF THE EMERGENCY LIGHTS.

SCHEMATIC

EMERGENCY LIGHTING
NOT TO SCALE



DETAIL

TYPICAL OUTLET MOUNTINGS
NOT TO SCALE

THE COPYRIGHT OF THIS DRAWING REMAINS THE PROPERTY OF THE ELECTRICAL DESIGN GROUP.

USE FIGURED DIMENSIONS IN PREFERENCE TO SCALE.

ALL DIMENSIONS TO BE VERIFIED ONSITE.

A	PRELIMINARY	24/10/2025
REV:	DESCRIPTION:	DATE:

ELECTRICAL DESIGN GROUP
ELECTRICAL BUILDING SERVICES CONSULTANTS

BRISBANE: P.O. Box 15 Sherwood Qld 4075
Phone: (07) 3278 4375
Email: brisbane@edg.net.au
Web: www.edg.net.au

ELECTRICAL DESIGN GROUP BRISBANE PTY LTD
ACN 092 710 793

TRADING AS:
ELECTRICAL DESIGN
GROUP

PROJECT:

JIMBOOMBA TAVERN

SITE ADDRESS:

**CORNER MT LINDESAY HIGHWAY &
CUSACKS LANE, JIMBOOMBA**

SCALE: SHEET SIZE:

NOT TO SCALE AT **A1**

DRAWING TITLE:

**ELECTRICAL SERVICES
LEGEND & DETAILS**

PROJECT NO: DRAWING NO: REVISION:

C3630a E01 A

NOTES

1. EXTENT OF WORKS

THE ELECTRICAL SERVICES SUB-CONTRACT INCLUDES BUT IS NOT LIMITED TO THE FOLLOWING:

- SUPPLY AND INSTALLATION OF ALL COMPONENTS FORMING PART OF THE ELECTRICAL SERVICES.
- INSPECTIONS.
- TESTING AND COMMISSIONING.
- MAINTENANCE.
- CABLING, CABLE SUPPORT SYSTEMS AND ACCESS.
- POWER DISTRIBUTION.
- LIGHTING.
- MODIFICATION, RELOCATION AND EXTENSION AS NECESSARY OF ALL EXISTING SERVICES THAT ARE IMPACTED BY THE WORKS OR REQUIRED TO BE EXTENDED BY THE WORKS.
- REMOVAL OF ALL EXISTING SERVICES MADE REDUNDANT BY THE WORKS.
- DOCUMENTS.
- ANY TEMPORARY WORKS REQUIRED TO KEEP THE HOTEL OPERATING DURING THE CONSTRUCTION PROCESS AND ACCOMMODATE STAGING OF THE WORKS TO REFLECT THE EXECUTION OF THE MAIN CONTRACT WORKS.
- ALL MINOR COMPONENTS AND INCIDENTAL WORKS NOT SPECIFICALLY REFERRED TO, HOWEVER NECESSARY TO COMPLETE THE ELECTRICAL SERVICES INSTALLATION SUCH THAT IT IS HANDED OVER COMPLETE, OPERATIONAL AND FIT FOR THE INTENDED USE.

PRIOR TO COMMENCING WORK CONSULT SITE MANAGEMENT FOR ANY HAZARDOUS MATERIAL AND OR ASBESTOS REGISTERS AS WELL AS UNDERTAKE A THOROUGH INSPECTION OF THE SITE TO IDENTIFY ANY POTENTIAL HAZARDOUS MATERIALS, ASBESTOS AND HEALTH OR SAFETY RISKS. ADVISE THE CONTRACTOR OF ANY POTENTIAL HAZARDOUS MATERIALS, ASBESTOS AND HEALTH OR SAFETY RISKS IF IDENTIFIED AND DO NOT COMMENCE WORK UNTIL AN APPROPRIATE MANAGEMENT PLAN HAS BEEN DEVELOPED AND AGREED TO BY ALL PARTIES.

SUPPLY ALL LABOUR, MATERIALS, EQUIPMENT, AND ALL OTHER ITEMS, WHETHER MENTIONED IN DETAIL OR NOT, REQUIRED FOR THE SATISFACTORY COMPLETION OF THE ELECTRICAL SERVICES INSTALLATION, LEAVING IN FULL WORKING ORDER TO THE SATISFACTION OF THE PROJECT MANAGER.

ACCEPT FULL RESPONSIBILITY FOR LIASING, ARRANGING AND CO-ORDINATION OF ALL WORKS THAT HAVE AN EFFECT ON OR WILL BE AFFECTED BY THE ELECTRICAL SERVICES.

REFER TO THE EQUIPMENT SCHEDULE FOR ADDITIONAL REQUIREMENTS.

2. WORKMANSHIP

ENSURE THAT THE ELECTRICAL WORK IS PERFORMED BY THE HOLDER OF A CURRENT ELECTRICAL SUB CONTRACTOR LICENSE AND THE SERVICES COVERED BY THE ACMA IS PERFORMED BY THE HOLDER OF THE APPROPRIATE CURRENT ACMA LICENSE. ENSURE THE INSTALLATION AND ALL COMPONENTS, FIXTURES, FITTINGS, OUTLETS AND CABLES ARE SUPPLIED AND INSTALLED TO A HIGH STANDARD THROUGHOUT, AND INSTALLED IN A NEAT AND TRADESMAN LIKE MANNER, TO THE CURRENT INDUSTRY STANDARDS. ENSURE ALL MATERIALS AND COMPONENTS OF A SIMILAR TYPE ARE OF THE SAME MANUFACTURER AND INSTALLED IN A UNIFORM MANNER.

IT IS THE ELECTRICAL SUB CONTRACTOR'S RESPONSIBILITY TO ENSURE THAT THE INSTALLATION IS FIT FOR PURPOSE AND IS PROVIDED AS A COMPLETE WORKING INSTALLATION. IT IS THE ELECTRICAL SUB CONTRACTOR'S RESPONSIBILITY TO PROVIDE ALL COMPONENTS, FITTINGS, FIXTURES, SYSTEMS, PROGRAMMING ETC IRRESPECTIVE OF THE LEVEL DETAILED IN THE DOCUMENTS SUCH THAT THE INSTALLATION IS PROVIDED AS A COMPLETE WORKING INSTALLATION.

CONCEAL ALL WIRING AND CONDUITS. EXPOSED CABLING OR CONDUITS ARE GENERALLY NOT ACCEPTABLE. IT IS NOTED THAT CHASING AND REINSTATEMENT WILL BE REQUIRED. ENSURE ALL COMPONENTS, EQUIPMENT AND MATERIALS SUPPLIED ARE NEW, UNUSED, DESIGNED AND SELECTED TO ENSURE SATISFACTORY OPERATION UNDER VARYING ATMOSPHERIC, CLIMATIC, HUMID TROPICAL CONDITIONS WITHOUT DISTORTION AND DETERIORATION IN ANY PART AFFECTING EFFICIENCY AND RELIABILITY OF THE SYSTEMS. DESIGN AND SELECT ALL EQUIPMENT TO PROVIDE THE NECESSARY SAFETY TO HUMAN LIFE AND PROPERTY DURING OPERATION AND MAINTENANCE WITH PARTICULAR ATTENTION GIVEN TO ELECTRICAL SAFETY AND SEGREGATION PRECAUTIONS.

CHECK THE FINISHED PAINTWORK AROUND THE AREA OF EACH INSTALLATION AND TOUCH UP ALL DAMAGED PARTS AND FINISHES AFTER THE INSTALLATION OF THE ELECTRICAL SERVICES.

ALL WORKS ARE TO BE CARRIED OUT IN ACCORDANCE WITH THE BUILDER'S PROGRAM. ENSURE ALL FINAL LOCATIONS OF OUTLETS AND FITTINGS ARE CO-ORDINATED ONSITE WITH THE ARCHITECT AND ALL OTHER SERVICES, TO THE APPROVAL OF THE PROJECT MANAGER. ALLOW TO CO-ORDINATE THE FINAL LOCATION OF ALL EQUIPMENT, FITTINGS, & OUTLETS, SUCH THAT THEY ARE INSTALLED IN ACCORDANCE WITH THE AS3000 RESTRICTED ZONES, AND ARE NOT COVERED INAPPROPRIATELY.

ENSURE THAT ALL METAL SURFACES ARE SUITABLY PROTECTED AGAINST CORROSION, AND THAT ALL PLASTIC MATERIALS ARE UV STABILISED.

PROVIDE ALL MATERIALS AS NEW, AND OF THE HIGHEST CLASS AVAILABLE FOR THEIR RESPECTIVE TYPES. ENSURE ALL ASPECTS OF THE WORK ARE OF A HIGH STANDARD THROUGHOUT, AND INSTALLED IN A NEAT AND TRADESMAN LIKE MANNER, TO THE CURRENT INDUSTRY STANDARDS.

MODIFICATION, RELOCATION AND EXTENSION AS NECESSARY OF ALL EXISTING SERVICES THAT ARE IMPACTED BY THE WORKS OR REQUIRED TO BE EXTENDED BY THE WORKS.

PROVIDE ALL TEMPORARY WORKS REQUIRED TO KEEP THE VENUE AND ALL CONSTRUCTION STAGES OPERATING INCLUDING STAGED COMMISSIONING DURING THE CONSTRUCTION PROCESS.

ALL MINOR COMPONENTS AND INCIDENTAL WORKS NOT SPECIFICALLY REFERRED TO, HOWEVER NECESSARY TO COMPLETE THE ELECTRICAL SERVICES INSTALLATION SUCH THAT IT IS HANDED OVER COMPLETE, OPERATIONAL AND FIT FOR THE INTENDED USE.

CORRUGATED CONDUITS MUST NOT BE USED WITHIN ANY FOOD OR DRINK PREPARATION OR SERVERY AREAS.

CABLE JOINS ARE NOT ACCEPTABLE. ALL CABLING, WIRING, CONDUCTORS AND CONDUITS MUST BE CONCEALED. ALL EXISTING ELECTRICAL SERVICES INCLUDING CABLING AND SWITCHGEAR THAT IS FOUND TO BE REDUNDANT OR MADE REDUNDANT BY THE WORKS MUST BE REMOVED.

IT IS ACCEPTABLE TO USE EXISTING SWITCHGEAR, OUTLETS AND CABLING IF THEY ARE APPROPRIATELY RATED AND THE ELECTRICIAN ACCEPTS RESPONSIBILITY OVER THE SWITCHGEAR / OUTLETS / CABLE AND PROVIDES A WARRANTY OVER IT AS IF IT WAS INSTALLED NEW BY THE ELECTRICIAN.

3. STANDARDS

IRRESPECTIVE OF INFORMATION CONTAINED IN THE ELECTRICAL SERVICES DOCUMENTS OR IN INSTRUCTIONS, IT IS THE ELECTRICAL SUB CONTRACTORS RESPONSIBILITY TO ENSURE ALL ELECTRICAL SERVICES WORKS ARE INSTALLED IN ACCORDANCE WITH THE REQUIREMENTS OF THE FOLLOWING. REFER ANY DISCREPANCIES BETWEEN THE REQUIREMENTS OF THE FOLLOWING AND/OR THE ELECTRICAL SERVICES DOCUMENTS AND INSTRUCTIONS TO THE ARCHITECT FOR CLARIFICATION PRIOR TO THE PLACING OF ORDERS, FABRICATION OR INSTALLATION OF THE ITEMS/METHODS IN DISCREPANCY.

- NCC BUILDING CODE OF AUSTRALIA.
- ELECTRICITY ACT.
- ELECTRICAL SAFETY ACT.
- AS/NZS3000.
- AS3008.
- WORKPLACE HEALTH AND SAFETY ACT.
- TELECOMMUNICATIONS ACT.
- ACMA REQUIREMENTS.

NOTES

4. AUTHORITIES

ENSURE ALL OF THE ELECTRICAL SERVICES COMPLY WITH THE REQUIREMENTS OF ALL REGULATORY AUTHORITIES HAVING JURISDICTION OVER THE SITE INCLUDING BUT NOT LIMITED TO THE FOLLOWING:

- ACMA.
- LOCAL COUNCIL.
- LOCAL SUPPLY AUTHORITY.
- STATE GOVERNMENT DEPARTMENT OF ENVIRONMENT AND HERITAGE.
- QLD GOVERNMENT, DIVISION OF WORKPLACE, HEALTH AND SAFETY.
- QLD FIRE AND EMERGENCY SERVICES.

5. CABLES

UNLESS OTHERWISE SPECIFIED, INSTALL AND TERMINATE CABLES IN ACCORDANCE WITH THE MANUFACTURERS' RECOMMENDATIONS. DETERMINE THE FINAL ROUTES TO SUIT THE BUILDING STRUCTURE AND SITE CONDITIONS. UNLESS NOTED OTHERWISE, PROVIDE ALL 240 VOLT POWER AND LIGHTING WIRING AS 2.5mm² TWIN & EARTH STRANDED COPPER CONDUCTORS, PVC INSULATED 0.6/1kV V75 GRADE TO AS3174, PROTECTED BY A 20 AMP CIRCUIT BREAKER. ALL CONDUIT AND FITTINGS TO BE RIGID UPVC TO AS2053, UNLESS NOTED OTHERWISE.

6. POWER DISTRIBUTION

PROVIDE A NEW DISTRIBUTION BOARD DB-L TO SUPPLY THE NEW CIRCUITS AND ACCOMMODATE THE NEW LIGHTING CONTROLS. PROVIDE A NEW MCCB IN THE EXISTING HOTEL MAIN DISTRIBUTION BOARD AND A NEW SUBMAIN TO SUPPLY DB-L. ADJUST THE EXISTING SERVICES AS NECESSARY TO FACILITATE ITS INSTALLATION.

ALL OF THE EXISTING SWITCHBOARDS, CIRCUITS, CABLING AND OUTLETS THAT BECOME REDUNDANT ARE TO BE REMOVED. THE EXISTING CIRCUITS THAT REMAIN WITHIN THE AREA OF WORKS ARE TO BE RECONNECTED TO THE SWITCHBOARDS WITH NEW SWITCHGEAR AND CONTROLS. ANY INTERRUPTION TO THE POWER SUPPLY TO ANY SERVICES OUTSIDE OF THE AREA OF WORKS MUST BE RESTRICTED TO OUTSIDE OF THE HOTELS OPERATING HOURS AND MUST BE ADVISED TO THE OPERATOR IN WRITING AT LEAST ONE WEEK PRIOR.

ALL SWITCHBOARDS AND SWITCHGEAR ARE TO BE SCHNEIDER OR NHP AND CONTAIN AT LEAST 25% OR 12 SPARE POLES (WHICHEVER IS THE LARGER) AT PRACTICAL COMPLETION. ALL SWITCHBOARDS ARE TO BE LIGHT GREY. ORANGE SWITCHBOARDS ARE NOT ACCEPTABLE. EXTERNAL SWITCHBOARDS MUST BE 316 STAINLESS STEEL OR ALUMINIUM. PROVIDE 92268 KEY LOCKABLE DOORS ON ALL SWITCHBOARDS. ALL SWITCHBOARDS AND CIRCUITS MUST BE UNIQUELY NAMED WITH SWITCHBOARDS PROVIDED WITH A LABEL CONTAINING:

- SOURCE NAME.
- SOURCE OVERLOAD RATING IN AMPS.
- SUBMAIN CABLE TYPE, SIZE, CONFIGURATION AND LENGTH.

ALL REMOVABLE PANELS AND ESCUTCHEONS MUST BE SECURED VIA 1/4 TURN LATCHES THAT REMAIN PART OF THE PANEL / ESCUTCHEON. IT IS NOT ACCEPTABLE TO SECURE REMOVABLE PANELS AND ESCUTCHEONS BY BOLTS, NUTS OR SCREWS.

ALL CIRCUIT BREAKERS AND CIRCUIT SCHEDULES MUST BE LABELLED / CONTAIN THE SUBMAIN / CIRCUIT USE AND LOCATION SUCH THAT THE CONNECTION / OUTLET CAN BE SIMPLY IDENTIFIED.

OUTLETS ARE TO BE PROVIDED WITH A NEAT HAND WRITTEN CIRCUIT DESIGNATION BY INDELEIBLE INK ON THE FACEPLATE SUCH THAT IT IS NOT VISIBLE WHEN THE COVER IS CONCEALED.

THE POWER DISTRIBUTION COMPONENT OF THIS CONTRACT INCLUDES, BUT IS NOT LIMITED TO THE FOLLOWING EXTENT OF WORK:

- POWER DISTRIBUTION.
- NEW MCCB IN THE MDB TO SUPPLY THE DB-L.
- SUBMAIN FROM THE MDB TO DB-L.
- NEW DISTRIBUTION BOARD DB-L.
- CABLE ACCESS WAYS.
- CIRCUITS.
- ISOLATORS AND OUTLETS.
- TESTING AND COMMISSIONING.
- REMOVAL OF ALL EXISTING REDUNDANT SERVICES.
- RECONNECTION OF ALL EXISTING SERVICES THAT REMAIN.

REFER TO THE DB-L DISTRIBUTION BOARD SCHEDULE FOR ADDITIONAL REQUIREMENTS AND CIRCUIT DETAILS.

PROVIDE DISTRIBUTION BOARD DB-L AS FOLLOWS:

- WALL MOUNTED.
- IP44 FORM 1.
- POWDER COAT THE ENCLOSURE A CUSTOM COLOUR AS ADVISED BY THE ARCHITECT.
- WHITE ESCUTCHEON.
- 3 POINT FLUSH LOCKABLE HANDLES ON ALL DOORS.
- LIFT OFF HINGES ON ALL DOORS AND ESCUTCHEONS.
- 1/4 TURN LATCHES AND D HANDLES ON ALL ESCUTCHEONS.
- ALL SWITCHGEAR TO BE SCHNEIDER OR NHP/ TERASAKI.
- PROVIDE SHOP DRAWINGS FOR APPROVAL.
- 25% SPARE POLES AT PRACTICAL COMPLETION.
- ALL COMPONENTS ARE TO BE LABELLED WITH NON-STICK LABELS.

ENSURE ALL THREE PHASE CIRCUITS ARE PROVIDED WITH CORRECT PHASE ROTATION.

ENSURE ALL OUTLETS AND ISOLATORS ARE POSITIONED SUCH THAT THEY ARE NOT COVERED BY THE EQUIPMENT. THE FINAL POSITION OF ALL OUTLETS AND ISOLATORS ARE TO BE CONFIRMED ON SITE BY THE TENANTS REPRESENTATIVE.

NOTES

7. LIGHTING

ALL FRONT OF HOUSE LIGHTING IS TO BE 2,700K OR 3,000K AND THE BACK OF HOUSE LIGHTING IS TO BE 4,000K.

UNLESS A FITTING HAS BEEN SPECIFIED IN THE EQUIPMENT SCHEDULE THAT CONTAINS A MAIN VOLTAGE LAMP, ALL LIGHT FITTINGS MUST BE PROVIDED AS SOLID-STATE LED WITH A FIVE-YEAR MANUFACTURERS REPLACEMENT WARRANTY AND A MINIMUM TWO YEAR MANUFACTURERS REPLACEMENT AND LABOUR WARRANTY.

ALL FRONT OF HOUSE LIGHTS THAT DO NOT CONTAIN A MAIN VOLTAGE LAMP ARE TO BE DALI DIMMABLE.

REMOTE DRIVERS ARE TO BE USED IF POSSIBLE AND LOCATED IN A CONCEALED ACCESSIBLE POSITION. IF THE DRIVER CAN NOT BE REACHED FROM THE FITTING ITS POSITION MUST BE NOTED ON THE AS CONSTRUCTED DOCUMENTS.

ALL FRONT OF HOUSE LIGHTS THAT CONTAIN MAIN VOLTAGE LAMPS ARE TO BE PROVIDED WITH THE LOWEST OUTPUT PRACTICAL TO ACHIEVE THE REQUIRED ILLUMINATION / EFFECT AND BE TRAILING EDGE PHASE DIMMABLE.

ALL ILLUMINATED SIGNAGE, GAMING BASE FOOTREST LEDS, CARPARK LIGHTS, AND EXTERNAL SECURITY LIGHTS NOT CONSIDERED FRONT OF HOUSE ARE TO BE SWITCHED.

ALL LIGHTING CIRCUITS MUST BE PROTECTED BY A 20 AMP RCBO WITH THE AVERAGE NUMBER OF FITTINGS / DRIVERS SUPPLIED FROM A SINGLE CIRCUIT NOT EXCEEDING 25 WITH THE MAXIMUM NOT EXCEEDING 30.

PROVIDE A PHILIPS DYNALITE LIGHTING CONTROL SYSTEM TO CONTROL THE LIGHTING CONFIGURED WITH THE FOLLOWING SCENES:

INTERNAL

- CLEANING – MANUAL OPERATION. 100% LIGHTS ON AND SIGNS OFF.
- DAY – AUTOMATIC OPERATION FROM 10.00 AM TO 3.30 PM.
- AFTERNOON – AUTOMATIC OPERATION FROM 3.30 PM TO DUSK.
- EVENING – AUTOMATIC OPERATION FROM DUSK TO 8.30 PM.
- NIGHT – AUTOMATIC OPERATION FROM 8.30 PM TO CLOSING.
- CLOSED – MANUAL OPERATION. 100% ON FOR 15 MINUTES THEN TO A SECURITY MODE.

EXTERNAL

- DAY – AUTOMATICALLY OFF FROM DAWN TO DUSK.
- NIGHT – AUTOMATICALLY ON FROM DUSK UNTIL 15 MINUTES PAST CLOSING.
- CLOSED – MANUAL OPERATION. NIGHT MODE FOR 15 MINUTES THEN TO A SECURITY MODE.

SET THE ILLUMINATION LEVELS IN CONSULTATION WITH THE VENUE MANAGER AND OBTAIN WRITTEN APPROVAL FROM THE VENUE MANAGER OF THEIR ACCEPTANCE OF THE ILLUMINATION SCENE LEVELS FOR EACH STAGED HANDOVER AND SUBMIT A COPY OF THE APPROVAL TO THE ARCHITECT.

PROVIDE PHILIPS DYNALITE PROGRAMMABLE SWITCH PANELS PE SENSORS AND TIME CLOCKS AS NECESSARY. EACH FUNCTIONAL AREA IS TO BE PROVIDED WITH A SWITCH PANEL IN A NON-CUSTOMER ACCESSIBLE POSITION WITH THE ABILITY TO MANUALLY INSTIGATE THE ABOVE SCENES.

DIN RAIL MOUNT THE PHILIPS DYNALITE CONTROL EQUIPMENT WITHIN THE ASSOCIATED SWITCHBOARD.

ALL OF THE LIGHT FITTINGS, LAMPS AND ACCESSORIES ARE TO BE PROVIDED AS PART OF THIS CONTRACT. THE LIGHTING COMPONENT OF THIS CONTRACT INCLUDES, BUT IS NOT LIMITED TO THE FOLLOWING EXTENT OF WORK:

- LIGHTING.
- LIGHT FITTINGS AND ACCESSORIES.
- EMERGENCY AND EXIT LIGHTING.
- EARTHING OF THE LIGHTING INSTALLATION.
- LIGHTING CONTROL.
- PHILIPS DYNALITE LIGHTING CONTROL SYSTEM.
- LIGHTING SUBCIRCUITS.
- TESTING AND COMMISSIONING.
- RECONNECTION OF THE EXISTING LIGHTING THAT REMAINS.
- REMOVAL OF ALL EXISTING REDUNDANT LIGHTING SERVICES INCLUDING THE REDUNDANT LIGHTING CONTROL SYSTEM.

COMMISSION THE LIGHTING CONTROL AT PRACTICAL COMPLETION AND AGAIN THREE TIMES DURING THE DEFECTS AND LIABILITY PERIOD TO THE SATISFACTION OF THE OPERATOR.

DALI TO PHASE DIMMING CONVERTERS ARE NOT ACCEPTABLE.

8. DOCUMENTATION

WITHIN TWO WEEKS OF PRACTICAL COMPLETION PROVIDE THE FOLLOWING DOCUMENTATION.

AS CONSTRUCTED DRAWINGS INCLUDING:

- ELECTRICIANS NAME AND CONTACT DETAILS.
- PROJECT NAME, ADDRESS AND DATE OF PRACTICAL COMPLETION.
- FITTING POSITIONS AND TYPES CROSS REFERENCED TO A FITTING / EQUIPMENT SCHEDULE.
- OUTLET, SWITCH, AND CONNECTION POSITIONS CROSS REFERENCED TO A FITTING / EQUIPMENT SCHEDULE.
- REMOTE DRIVER LOCATIONS.
- CIRCUITS CROSS REFERENCED TO A DISTRIBUTION BOARD SCHEDULE.
- LIGHTING CONTROL CHANNELS CROSS REFERENCED TO A LIGHTING CONTROL SCHEDULE.
- POWER SCHEMATIC.
- SWITCHBOARD SHOP DRAWINGS.
- CABLE ACCESS ROUTES.

A FITTING / EQUIPMENT SCHEDULE INCLUDING.

- FITTING DETAILS INCLUDING THE MANUFACTURERS CATALOGUE NUMBERS WITH THE TYPES CROSS REFERENCED TO THE AS CONSTRUCTED DRAWINGS.
- OUTLETS AND SWITCHES INCLUDING THE MANUFACTURERS CATALOGUE NUMBERS WITH THE TYPES CROSS REFERENCED TO THE AS CONSTRUCTED DRAWINGS.

DISTRIBUTION BOARD SCHEDULES CROSS REFERENCED TO THE AS CONSTRUCTED DRAWINGS.

LIGHTING CONTROL SCHEDULE CROSS REFERENCED TO THE AS CONSTRUCTED DRAWINGS.

PHOTOS OF EACH SWITCHBOARD INCLUDING:

- CLOSED POSITION SUCH THAT THE SWITCHBOARD DESIGNATION AND CLEARANCE IS VISIBLE.
- THE SUBMAIN LABEL.
- DOOR/S OPEN ESCUTCHEON/S CLOSED SUCH THAT THE SPARE CAPACITY AND LABELLING IS VISIBLE.
- DOOR/S OPEN ESCUTCHEON/S REMOVED SUCH THAT THE SWITCHGEAR AND INTERNAL CABLING IS VISIBLE.

NOTES

9. EMERGENCY AND EXIT LIGHTING

PROVIDE A SINGLE POINT EMERGENCY LIGHTING SYSTEM THAT COMPLIES WITH THE LATEST ISSUE OF ALL PARTS AS2293 AND THE RELEVANT PARTS OF THE NCC BCA. INSTALL EMERGENCY LIGHT FITTINGS NOMINATED AS MAINTAINED WITH THE LAMP PERMANENTLY ON SUPPLIED VIA AN UNSWITCHED ACTIVE MAINS SUPPLY WHEN THE MAINS SUPPLY IS AVAILABLE. WHEN THE MAINS SUPPLY IS NOT AVAILABLE, THE LAMP IS TO REMAIN ON SUPPLIED BY THE EMERGENCY PACK. SINGLE LAMP MAINTAINED EMERGENCY LIGHTS ARE NOT SWITCHED WITH THE LOCAL GENERAL AREA LIGHTING. (THE LAMP IS ALWAYS ON.)

INSTALL EMERGENCY LIGHT FITTINGS NOMINATED AS NON-MAINTAINED AS FOLLOWS:

- IF THE FITTING IS NOT BEING SWITCHED, THE LAMP IS TO REMAIN OFF WHEN THE MAINS SUPPLY IS AVAILABLE. WHEN THE MAINS SUPPLY IS NOT AVAILABLE THE LAMP IS TO BE SWITCHED ON SUPPLIED BY THE EMERGENCY PACK.
- UNWITCHED SINGLE LAMP NON-MAINTAINED EMERGENCY LIGHTS ARE NOT SWITCHED WITH THE LOCAL GENERAL AREA LIGHTING. (THE LAMP IS ON ONLY WHEN THE MAINS SUPPLY IS NOT AVAILABLE.)
- IF THE FITTING IS BEING SWITCHED, THE LAMP IS TO BE SUPPLIED AND CONTROLLED WITH THE LOCAL GENERAL AREA LIGHTING WHEN THE MAINS SUPPLY IS AVAILABLE. WHEN THE MAINS SUPPLY IS NOT AVAILABLE THE LAMP IS TO BE SWITCHED ON, SUPPLIED BY THE EMERGENCY PACK. (THE LAMP IS ON WHEN TURNED ON WITH THE LOCAL GENERAL LIGHTING OR THE MAIN SUPPLY IS NOT AVAILABLE.)

INSTALL EMERGENCY LIGHTS SUCH THAT THE STATUS INDICATOR L.E.D. IS CLEARLY VISIBLE AND THE TEST BUTTONS ARE READILY ACCESSIBLE. LABEL EACH CIRCUIT BREAKER WHICH CONTROLS THE UNSWITCHED ACTIVE TO EXIT LIGHTS WITH A LABEL FIXED ADJACENT; ENGRAVED PLASTIC LAMINATE, GREEN BACKGROUND WITH WHITE CHARACTERS: –

WARNING
INTERRUPTING SUPPLY WILL DISCHARGE
EMERGENCY LIGHTING BATTERIES

PROVIDE WRITTEN EVIDENCE OF THE INITIAL COMMISSIONING AND TESTING AND TESTING FOR THE DURATION OF THE MAINTENANCE PERIOD IN ACCORDANCE WITH AS 2293.2.

THIS EVIDENCE IS TO BE IN THE FORM OF A LOG BOOK SIMILAR TO THE GENERAL LIGHTING SERVICE PTY LTD "EMERGENCY LIGHTING MAINTENANCE LOG BOOK AND MANUAL" WHICH IS TO BE PROVIDED BY THE ELECTRICAL SUB-CONTRACTOR AND HAVE ALL ENTRIES FULLY COMPLETED AND BE PRESENTED FOR INSPECTION AT PRACTICAL COMPLETION. THE LOG BOOK IS TO BE RETAINED BY THE ELECTRICAL SUB-CONTRACTOR FOR THE DURATION OF THE MAINTENANCE PERIOD, AND THE SIX MONTHLY TEST AND MAINTENANCE RESULTS ENTERED. THE LOG BOOK IS TO BE PRESENTED FOR APPROVAL AT FINAL COMPLETION (EXPIRY OF THE MAINTENANCE PERIOD) AND WILL BE FORWARDED TO THE OPERATOR FOR THEIR USE.

PROVIDE MAINTENANCE OF THE EMERGENCY AND EXIT LIGHTING INSTALLATION INCLUDING RECORDS IN ACCORDANCE WITH THE LATEST ISSUE OF ALL PARTS AS2293 AND THE RELEVANT PARTS OF THE NCC BCA. PROVIDE THE EMERGENCY LIGHTING SYSTEM WITH A SUPPLY SENSING AND TESTING FACILITY IN ACCORDANCE WITH AS 2293.1.

10. GAMING

THE GAMING ELECTRICIAN WILL BE ENGAGED DIRECTLY BY ENDEAVOUR GROUP TO UNDERTAKE THE FOLLOWING:

- COMMUNICATIONS CABLING.
- GAMING DISTRIBUTION BOARD DB-CJB INCLUDING THE SUPPLY TO THE DISTRIBUTION BOARD.
- CIRCUITS FROM GAMING DISTRIBUTION BOARD DB-CJB VIA THE LIGHTING CONTROL SYSTEM AS NECESSARY TO:
 - GAMING MACHINES.
 - GAMING MODEMS.
 - GAMING MACHINE SIGNAGE.
 - GAMING ROOM CRTS.
- GAMING ROOM CABLE ACCESS EXCLUDING FLOOR CHASES AND REINSTATEMENT OF THE FLOOR CHASES.

ALL OTHER REMAINING ELECTRICAL SERVICES WITHIN THE GAMING ROOM ARE TO BE PROVIDED AS PART OF THE BUILDING WORKS ELECTRICAL SUB CONTRACT.

11. TAB

THE GAMING ELECTRICIAN WILL BE ENGAGED DIRECTLY BY ENDEAVOUR GROUP TO UNDERTAKE THE FOLLOWING:


- COMMUNICATIONS CABLING.
- CIRCUITS FROM THE DISTRIBUTION BOARD DB-TAB TO:
 - TAB UNITS.
 - TAB TELEVISIONS.

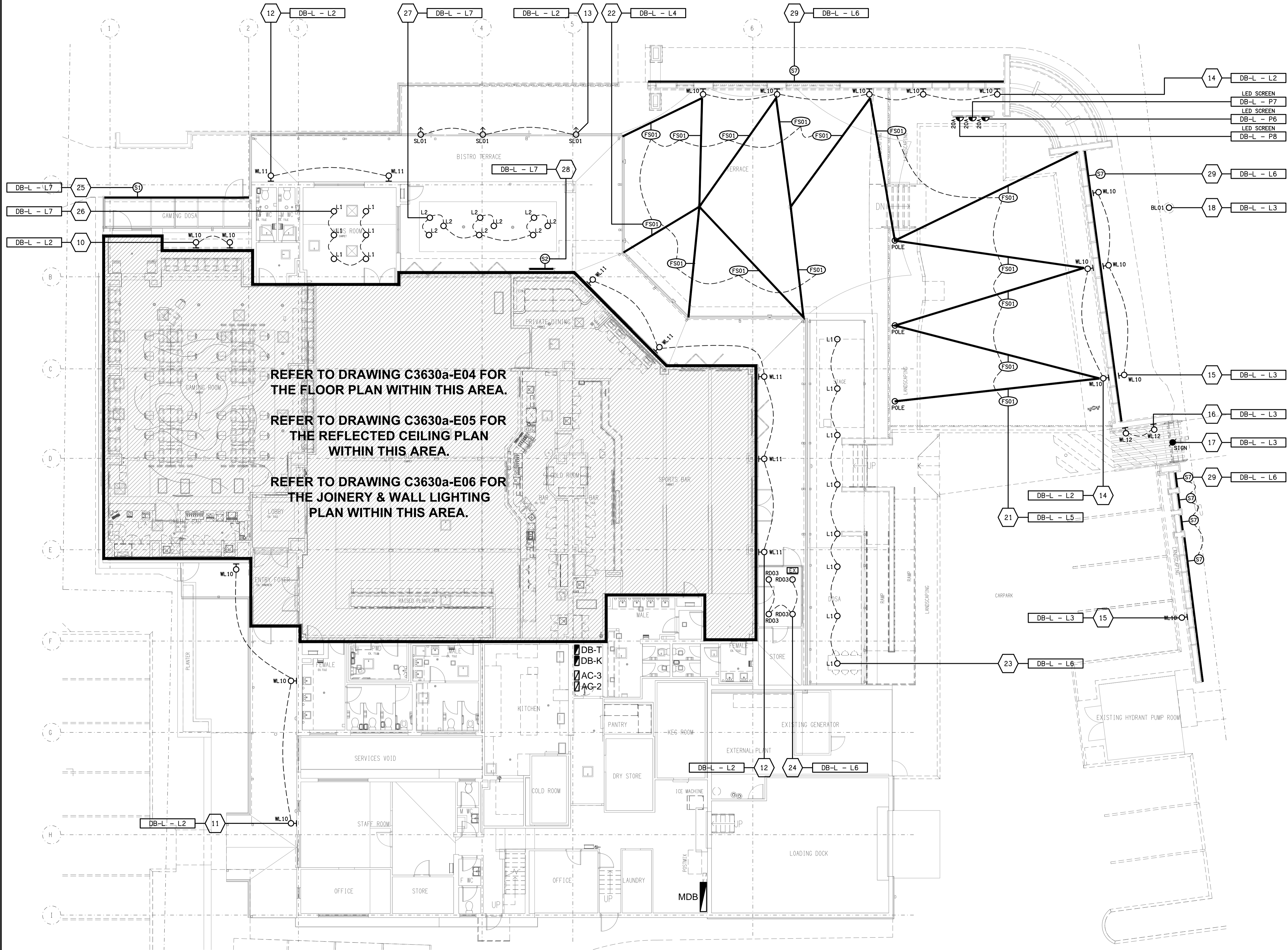
ALL OTHER REMAINING ELECTRICAL SERVICES WITHIN THE TAB ROOM ARE TO BE PROVIDED AS PART OF THE BUILDING WORKS ELECTRICAL SUB CONTRACT.

12. ABBREVIATIONS

A	- AMP CURRENT RATING
AB	- MOUNT ABOVE BENCH.
AFFL	- ABOVE FINISHED FLOOR LEVEL.
BB	- MOUNT BELOW BENCH.
BH	- MOUNT ON BULKHEAD.
CEIL	- MOUNT ON CEILING.
CS	- MOUNT WITHIN CEILING SPACE.
C/W	- COMPLETE WITH.
DW	- DISHWASHER.
MCB	- MINIATURE CIRCUIT BREAKER.
MCSB	- MOLDED CASE CIRCUIT BREAKER.
MSB	- MAIN SWITCHBOARD.
MSSB	- MECHANICAL SERVICES SWITCHBOARD.
MW	- MICROWAVE.
N	- NEON / LED INDICATOR WHEN ON.
NTS	- NOT TO SCALE.
RCBO	- CIRCUIT BREAKER C/W AN INTEGRAL 30mA RESIDUAL CURRENT DEVICE.
RCD	- CIRCUIT PROTECTED VIA A 30mA RESIDUAL CURRENT DEVICE.
REF	- REFRIGERATOR.
UNO	- UNLESS NOTED OTHERWISE.
WP	- WEATHERPROOF TO IP56 UNO.
500	- NUMBER DENOTES MOUNTING HEIGHT AFFL.

THE COPYRIGHT OF THIS DRAWING REMAINS THE PROPERTY OF THE ELECTRICAL DESIGN GROUP.		
USE FIGURED DIMENSIONS IN PREFERENCE TO SCALE.		
ALL DIMENSIONS TO BE VERIFIED ONSITE.		

A PRELIMINARY 24/10/2025		
REV:	DESCRIPTION:	DATE:
<div><div> ELECTRICAL DESIGN GROUP</div><div>ELECTRICAL BUILDING SERVICES CONSULTANTS</div></div>		
BRISBANE: P.O. Box 15 Sherwood Qld 4075 Phone: (07) 3278 4375 Email: brisbane@edg.net.au Web: www.edg.net.au		
ELECTRICAL DESIGN GROUP BRISBANE PTY LTD ACN 092 710 793		
TRADING AS: ELECTRICAL DESIGN GROUP		
PROJECT:		
JIMBOOMBA TAVERN		
SITE ADDRESS:		
CORNER MT LINDESAY HIGHWAY & CUSACKS LANE, JIMBOOMBA		
SCALE: SHEET SIZE:		
NOT TO SCALE AT A1		
DRAWING TITLE:		
ELECTRICAL SERVICES NOTES		
PROJECT NO: DRAWING NO: REVISION:		
C3630a E02 A		



A	PRELIMINARY	24/10/2025
REV:	DESCRIPTION:	DATE:

ELECTRICAL DESIGN GROUP
ELECTRICAL BUILDING SERVICES CONSULTANTS

BRISBANE: P.O. Box 15, Sherwood Qld 4075
Phone: (07) 3278 4375
Email: brisbane@edg.net.au
Web: www.edg.net.au

ELECTRICAL DESIGN GROUP BRISBANE PTY LTD
ACN 092 710 793

TRADING AS:
ELECTRICAL DESIGN
GROUP

PROJECT:

JIMBOOMBA TAVERN

SITE ADDRESS:

CORNER MT LINDESAY HIGHWAY &
CUSACKS LANE, JIMBOOMBA

SCALE: SHEET SIZE:

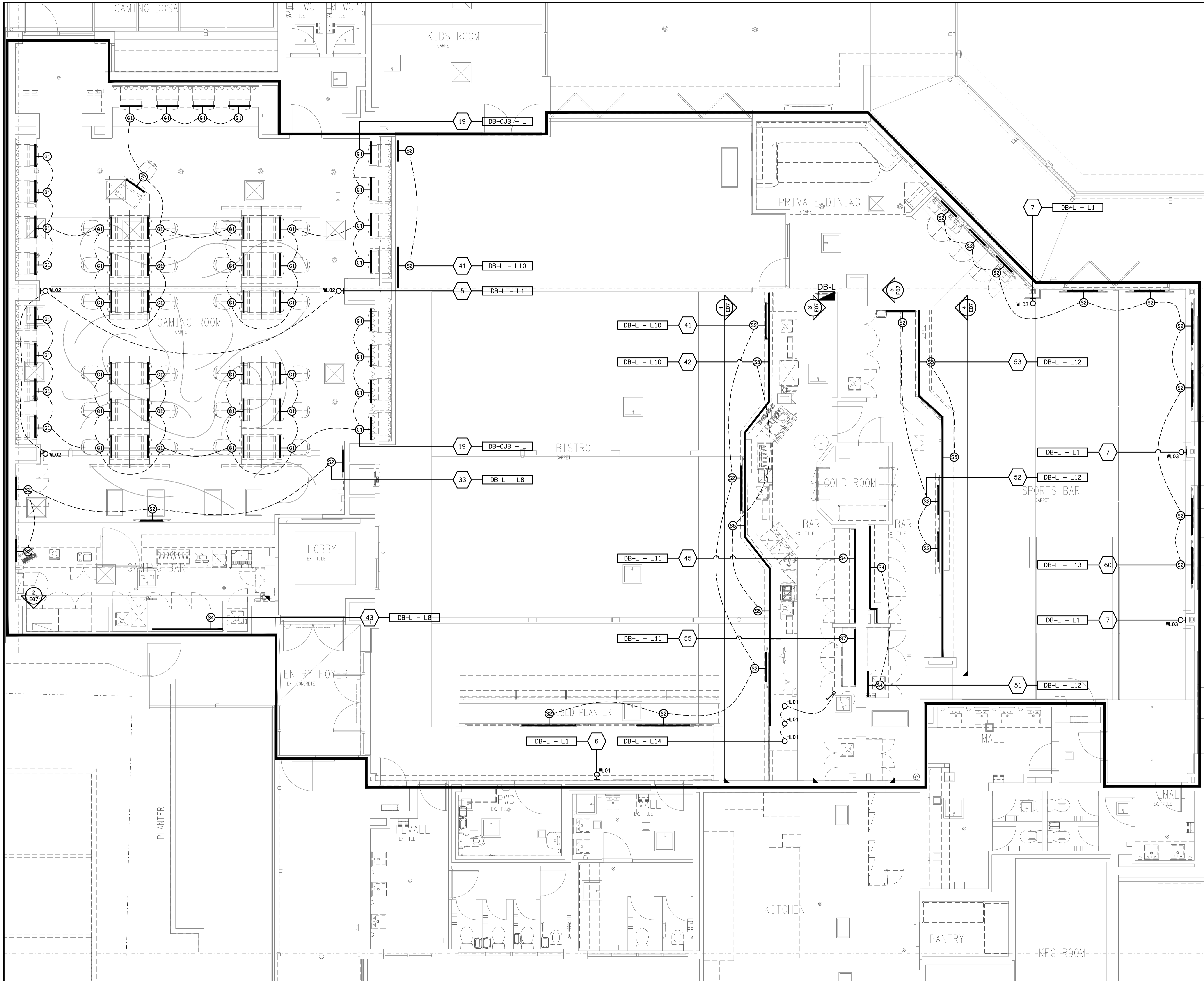
1:100 AT A1

DRAWING TITLE:

**ELECTRICAL SERVICES
OVERALL PLAN**

PROJECT NO: DRAWING NO: REVISION:

C3630a E03 A



THE COPYRIGHT OF THIS DRAWING REMAINS THE PROPERTY OF THE ELECTRICAL DESIGN GROUP.

USE FIGURED DIMENSIONS IN PREFERENCE TO SCALE.

ALL DIMENSIONS TO BE VERIFIED ONSITE.

A	PRELIMINARY	24/10/2025
REV:	DESCRIPTION:	DATE:

ELECTRICAL DESIGN GROUP
ELECTRICAL BUILDING SERVICES CONSULTANTS

BRISBANE: P.O. Box 15 Sherwood Qld 4075
Phone: (07) 3278 4375
Email: brisbane@edg.net.au
Web: www.edg.net.au

ELECTRICAL DESIGN GROUP BRISBANE PTY LTD
ACN 092 710 793

TRADING AS:
ELECTRICAL DESIGN GROUP

PROJECT:
JIMBOOMBA TAVERN

SITE ADDRESS:
CORNER MT LINDESAY HIGHWAY & CUSACKS LANE, JIMBOOMBA

SCALE: 1:50

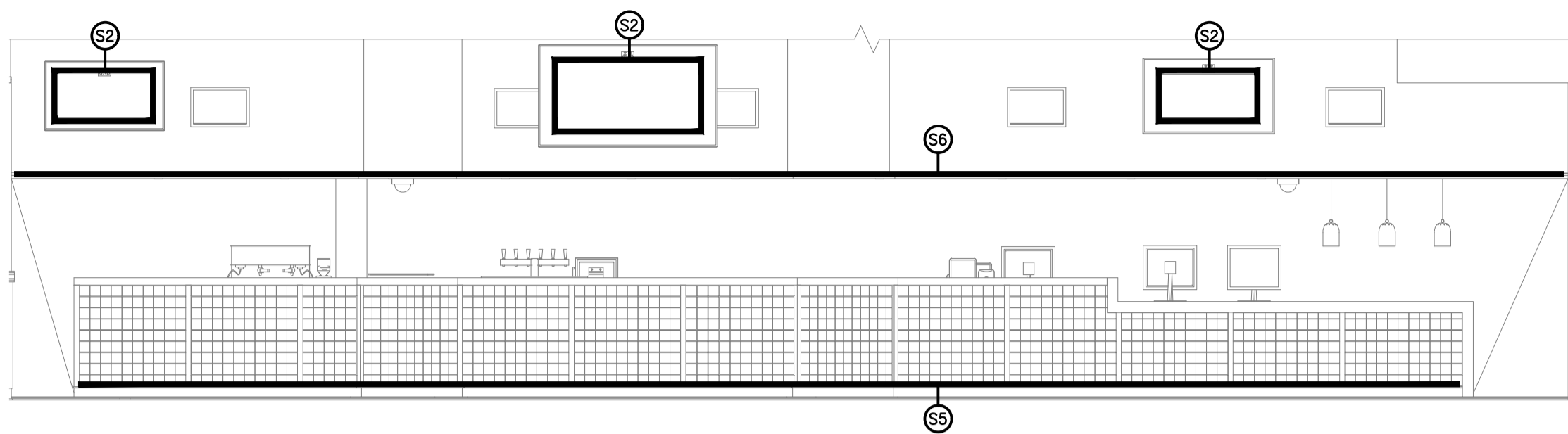
SHEET SIZE: AT A1

DRAWING TITLE:

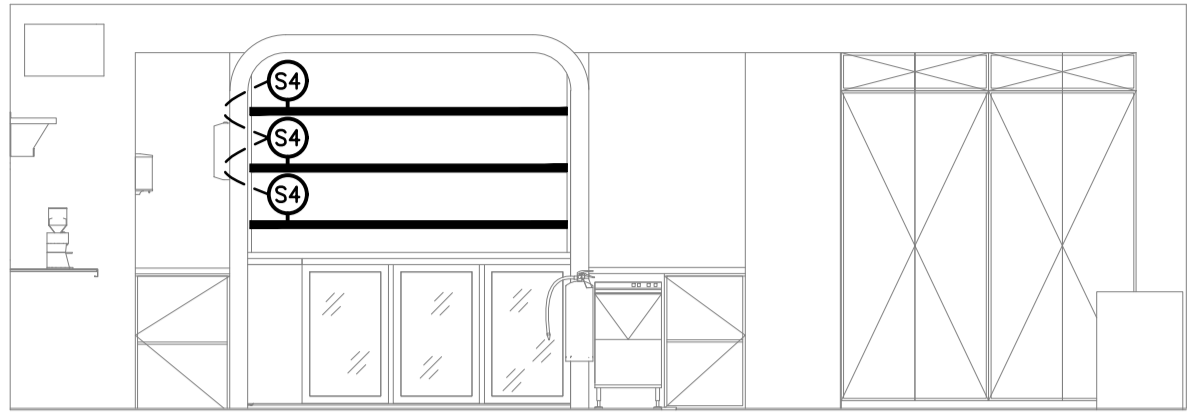
ELECTRICAL SERVICES
JOINERY & WALL
LIGHTING PLAN

PROJECT NO: DRAWING NO: REVISION:

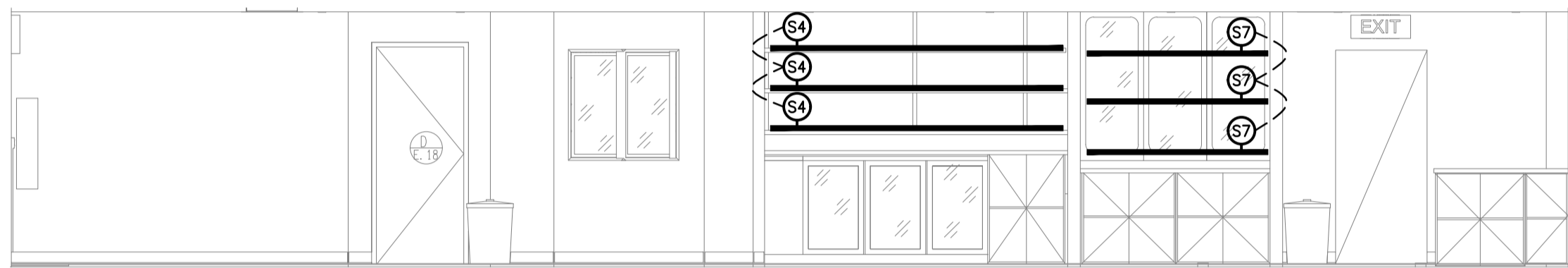
C3630a E06 A



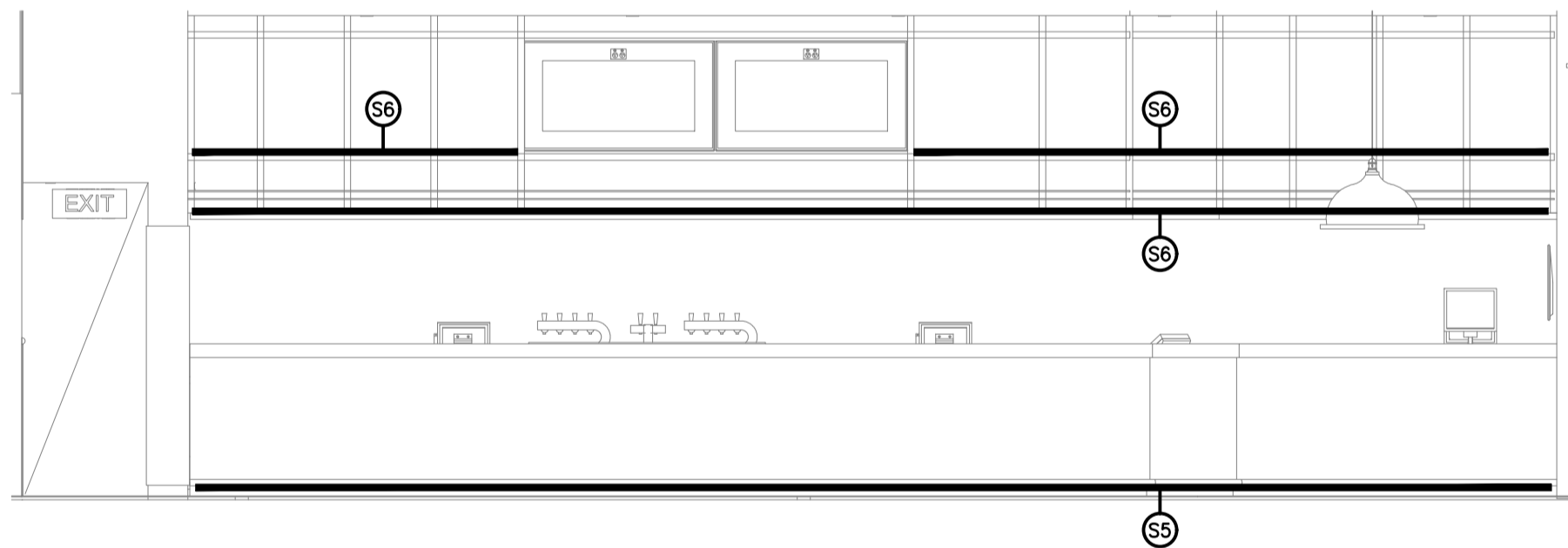
1 Proposed Bistro Front Bar Front Elevation
1 : 50



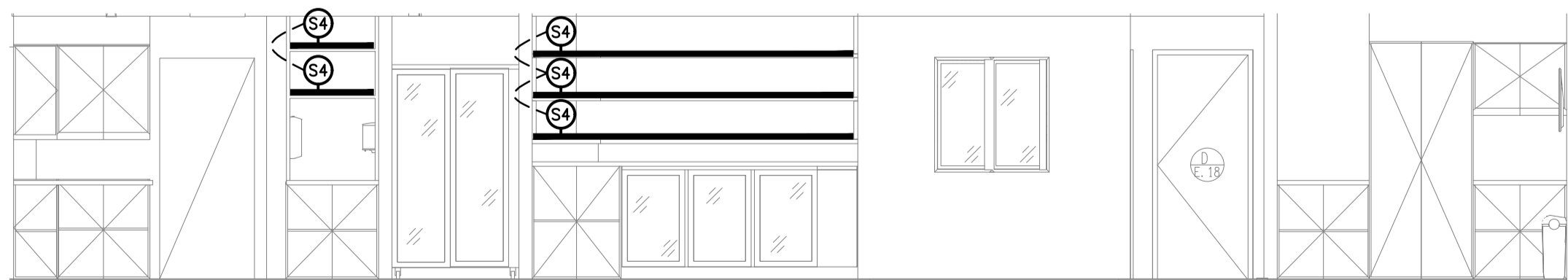
2 Proposed Gaming Bar Back Wall Elevation
1 : 50



3 Proposed Bistro Back Bar Elevation
1 : 50



4 Proposed Sports Bar Front Bar Front Elevation
1 : 50



5 Proposed Sports Bar Back Bar Elevation
1 : 50

THE COPYRIGHT OF THIS DRAWING REMAINS THE PROPERTY OF THE ELECTRICAL DESIGN GROUP.

USE FIGURED DIMENSIONS IN PREFERENCE TO SCALE.

ALL DIMENSIONS TO BE VERIFIED ONSITE.

A	PRELIMINARY	24/10/2025
REV:	DESCRIPTION:	DATE:

ELECTRICAL DESIGN GROUP
ELECTRICAL BUILDING SERVICES CONSULTANTS

BRISBANE: P.O. Box 15, Sherwood Qld 4075
Phone: (07) 3278 4375
Email: brisbane@edg.net.au
Web: www.edg.net.au

ELECTRICAL DESIGN GROUP BRISBANE PTY LTD
ACN 092 710 793

TRADING AS:
ELECTRICAL DESIGN
GROUP

PROJECT:

JIMBOOMBA TAVERN

SITE ADDRESS:

**CORNER MT LINDESAY HIGHWAY &
CUSACKS LANE, JIMBOOMBA**

SCALE: SHEET SIZE:

1:50 AT A1

DRAWING TITLE:

**ELECTRICAL SERVICES
JOINERY & WALL
LIGHTING ELEVATIONS**

PROJECT NO: DRAWING NO: REVISION:

C3630a E07 A