



ELECTRICAL DESIGN GROUP

ELECTRICAL BUILDING SERVICES CONSULTANTS

P.O. Box 15, SHERWOOD Q. 4075

Phone: (07) 3278 4375

Website: www.edg.net.au Email: brisbane@edg.net.au

C3604a - 25 SOUTH PINE ROAD, BRENDALE

C3604a-0001(A).xls

ELECTRICAL SERVICES CONTRACT DOCUMENT SCHEDULE

REVISION A - 18 AUGUST 2025

ISSUING INFORMATION				DATE OF ISSUE							
	DAY	MONTH	YEAR	18							
				08							
				25							
				T							
REASON FOR ISSUE											
A = APPROVAL		C = CONSTRUCTION		N = COORDINATION		P = PRELIMINARY		T = TENDER			

DISTRIBUTION				NUMBER OF COPIES							
WWW.EDG.NET.AU				1E							
COLLIERS				1E							
P = PRINT T = TRACING D = DISC E = EMAIL F = FAX											

DOCUMENTS		REVISION									
C3604a-E01.dwg	LEGEND, SCHEMATICS & DETAILS	A									
C3604a-E02.dwg	NOTES	A									
C3604a-E03.dwg	SITE PLAN	A									
C3604a-E04.dwg	WAREHOUSE FLOOR PLAN	A									
C3604a-E05.dwg	WAREHOUSE REFLECTED CEILING PLAN	A									
C3604a-0001.xls	CONTRACT DOCUMENT SCHEDULE	A									
C3604a-0002.xls	EQUIPMENT SCHEDULE	A									
C3604a-0004.xls	DISTRIBUTION BOARD DB-1 SCHEDULE	A									
C3604a-0005.xls	DISTRIBUTION BOARD DB-2 SCHEDULE	A									
C3604a-0006.xls	DISTRIBUTION BOARD DB-3 SCHEDULE	A									



ELECTRICAL DESIGN GROUP

ELECTRICAL BUILDING SERVICES CONSULTANTS

P.O. Box 15, SHERWOOD Q. 4075

Phone: (07) 3278 4375 Fax: (07) 3716 0222

Web Site: www.edg.net.au Email: brisbane@edg.net.au

C3604a - 25 SOUTH PINE ROAD, BRENDALE

C3604a-0002(A).xls

ELECTRICAL EQUIPMENT SCHEDULE

REVISION A - 18 AUGUST 2025

THE LIGHT FITTING SUPPLIER CONTACT DETAILS MAY BE AVAILABLE ON THE EDG WEBSITE VIA THE FOLLOWING LINK
www.edg.net.au/Links/Lighting.htm

TYPE	LAMPS	DESCRIPTION	COLOUR / ACCESSORY	CATALOGUE No	REV
L1	40W 4000K LED	WALL MOUNTED 1200 LONG IP65 BATTEN .	NA	RAPID LED R3540-TRI	A
L2	40W 4000K LED	SURFACE MOUNTED 1200 LONG IP65 BATTEN C/W NON MAINTAINED UNSWITCHED AS2293 EMERGENCY PACK. THIS FITTING IS UNSWITCHED IS TO ONLY OPERATE ON MAIN FAILURE.	NA	RAPID LED R3540-EM-TRI	A
L3	200W 4000K LED	HIGH BAY PENDANT C/W INTEGRAL DRIVER	BLACK	SAL SHB23MP200TC-200-4000K	A
L4	13W 4000K LED	RECESSED DOWNLIGHT	WHITE TRIM	RAPID LED R1055-WH-TRI	A
L5	36W 4000K LED	600 X 600 SURFACE MOUNTED LED PANEL LIGHT	WHITE	RAPID LED R3205-TRI-SM	A
F1	4900 DIA 3 PHASE CEILING FAN C/W A STANDARD WIRED CONTROLLER MOUNTED ADJACENT THE LIGHTING CONTROL SPL. PROVIDE ALL NECESSARY STRUCTURAL SUPPORTS TO MOUNT THE FAN.		NA	BIGG ASS 4.9M DIA POWER FOIL C/W STANDARD WIRED CONTROLLER	A
E1	LED	EMERGENCY LIGHT: RECESSED NON-MAINTAINED EMERGENCY LIGHT. AS2293 CLASSIFICATION C0-D40 - C90-D40.	WHITE	CLEVERTRONICS CLIFE	A
E2	LED	EXIT LIGHT: MAINTAINED 40M VIEWING DISTANCE EXIT LIGHT C/W DIFFUSERS & DIRECTIONAL ARROWS AS SHOWN. CEILING SURFACE MOUNT OR WALL MOUNT BETWEEN 2100mm & 2700mm AFFL IF THERE IS NO VERTICAL SURFACE TO MOUNT THE FITTING ON WITHIN THIS RANGE CONFIRM THE MOUNTING HEIGHT WITH THE ENGINEER. AS2293 CLASSIFICATION C0-D8 - C90-E3.2.	WHITE	CLEVERTRONICS CJELED-40	A
EX	LED	EXIT LIGHT: MAINTAINED 24M VIEWING DISTANCE EXIT LIGHT C/W DIFFUSERS & DIRECTIONAL ARROWS AS SHOWN. CEILING SURFACE MOUNT OR WALL MOUNT BETWEEN 2100mm & 2700mm AFFL IF THERE IS NO VERTICAL SURFACE TO MOUNT THE FITTING ON WITHIN THIS RANGE CONFIRM THE MOUNTING HEIGHT WITH THE ENGINEER. AS2293 CLASSIFICATION C0-E2 - C90-E2.	WHITE	CLEVERTRONICS CCFLED	A
CONDUIT ACCESS POINT (A1)		PROVIDE A 63 DIA POWER CONDUIT AND A 25 DIA COMMUNICATIONS CONDUIT FROM THE EXTERNAL EV CHARGER POSITION TO THE EVDB FOR USE BY THE FITOUT CONTRACTOR.			A



ELECTRICAL DESIGN GROUP

ELECTRICAL BUILDING SERVICES CONSULTANTS

P.O. Box 15, SHERWOOD Q. 4075

Phone: (07) 3278 4375 Fax: (07) 3716 0222

Web Site: www.edg.net.au Email: brisbane@edg.net.au

C3604a - 25 SOUTH PINE ROAD, BRENDAL

C3604a-0002(A).xls

ELECTRICAL EQUIPMENT SCHEDULE

REVISION A - 18 AUGUST 2025

THE LIGHT FITTING SUPPLIER CONTACT DETAILS MAY BE AVAILABLE ON THE EDG WEBSITE VIA THE FOLLOWING LINK
www.edg.net.au/Links/Lighting.htm

TYPE	LAMPS	DESCRIPTION	COLOUR / ACCESSORY	CATALOGUE No	REV
PROXIMITY DETECTOR SWITCH (PD)		ADJUSTABLE FLUSH RECESSED 360 DEGREE PIR PRESENCE DETECTOR TO OPERATE THE ASSOCIATED LIGHTS FOR A PRE-SET AMOUNT OF TIME. ADJUST THE TIME AND SENSITIVITY ON SITE AS DIRECTED BY THE ENGINEER. SUBMIT DETAILS OF THE MOVEMENT DETECTOR SWITCH FOR APPROVAL PRIOR TO ORDERING	WHITE	CLIPSAL	A
ONE-WAY LIGHT SWITCH		ONE-WAY LIGHT SWITCH C/W CIRCUIT IDENTIFICATION ON THE FACEPLATE BEHIND THE SURROUND MOUNTED AT 1000mm AFFL UNLESS NOTED OTHERWISE.	WHITE	CLIPSAL C2000 SERIES 30USM	A
ONE-WAY WEATHERPROOF LIGHT SWITCH (IP56)		IP56 ONE-WAY / TWO-WAY AS NOTED ON DRAWING LIGHT SWITCH C/W CIRCUIT IDENTIFICATION ON THE FACEPLATE BEHIND THE SURROUND MOUNTED AT 1100mm AFFL UNLESS NOTED OTHERWISE.	WHITE	CLIPSAL "56 SERIES"	A
LIGHTING CONTROL SWITCH PANEL (SP1)		MULTI GANG LIGHT SWITCH PANEL WITH UP TO FOUR SWITCHES PER FACEPLATE. MOUNTED AT 1000mm AFFL UNLESS NOTED OTHERWISE.	WHITE	CLIPSAL C2000 SERIES 30USM	A
SINGLE POWER OUTLET		SINGLE POWER OUTLET C/W CIRCUIT IDENTIFICATION ON THE FACEPLATE BEHIND THE SURROUND MOUNT AT 300mm AFFL U.N.O. RATING 10A U.N.O.	WHITE	CLIPSAL C2000 SERIES	A
DOUBLE POWER OUTLET		DOUBLE POWER OUTLET C/W CIRCUIT IDENTIFICATION ON THE FACEPLATE BEHIND THE SURROUND MOUNT AT 300mm AFFL U.N.O. RATING 10A U.N.O.	WHITE	CLIPSAL C2000 SERIES	A
15 AMP POWER OUTLET (15A)		15AMP SINGLE PHASE IP66 WEATHERPROOF SINGLE POWER OUTLET. MOUNTED AT 1000mm AFFL	HEAVY DUTY GREY	CLIPSAL 56 SERIES	A
3 PHASE POWER OUTLET (3PH)		20AMP THREE PHASE IP66 WEATHERPROOF SINGLE POWER OUTLET. MOUNTED AT 1000mm AFFL	HEAVY DUTY GREY	CLIPSAL 56 SERIES	A
SINGLE-PHASE ISOLATOR		SINGLE-PHASE WEATHERPROOF ISOLATOR. MOUNT AT 1350mm AFFL U.N.O. RATING 20A U.N.O. CONNECT TO EQUIPMENT VIA FLEXIBLE CONDUIT.	-	CLIPSAL WHT20	A
THREE-PHASE ISOLATOR		THREE-PHASE WEATHERPROOF ISOLATOR. MOUNT AT 1350mm AFFL U.N.O. RATING 20A U.N.O. CONNECT TO EQUIPMENT VIA FLEXIBLE CONDUIT.	-	CLIPSAL WHT35	A
DB-1		NEW WAREHOUSE DISTRIBUTION BOARD 1. REFER TO THE NOTES AND DB-1 SCHEDULE FOR ADDITIONAL REQUIREMENTS.			A

C3604a-0002(A).xls

Pages inc. any attach. 2 of 3



ELECTRICAL DESIGN GROUP

ELECTRICAL BUILDING SERVICES CONSULTANTS

P.O. Box 15, SHERWOOD Q. 4075

Phone: (07) 3278 4375 Fax: (07) 3716 0222

Web Site: www.edg.net.au Email: brisbane@edg.net.au

C3604a - 25 SOUTH PINE ROAD, BRENDALE

C3604a-0002(A).xls

ELECTRICAL EQUIPMENT SCHEDULE

REVISION A - 18 AUGUST 2025

THE LIGHT FITTING SUPPLIER CONTACT DETAILS MAY BE AVAILABLE ON THE EDG WEBSITE VIA THE FOLLOWING LINK
www.edg.net.au/Links/Lighting.htm

TYPE	LAMPS	DESCRIPTION	COLOUR / ACCESSORY	CATALOGUE No	REV
DB-2		NEW WAREHOUSE DISTRIBUTION BOARD 2. REFER TO THE NOTES AND DB-2 SCHEDULE FOR ADDITIONAL REQUIREMENTS.			A
DB-3		NEW WAREHOUSE DISTRIBUTION BOARD 3. REFER TO THE NOTES AND DB-3 SCHEDULE FOR ADDITIONAL REQUIREMENTS.			A
DB-A		NEW WAREHOUSE MAIN DISTRIBUTION BOARD. REFER TO THE NOTES AND POWER SCHEMATICS FOR ADDITIONAL REQUIREMENTS.			A
EV-DB		NEW EV CHARGING DB. REFER TO THE NOTES FOR ADDITIONAL REQUIREMENTS.			A
MSB		EXISTING MAIN SWITCHBOARD TO BE MODIFIED AS PER THE NOTES AND POWER SCHEMATIC.			A



ELECTRICAL DESIGN GROUP

ELECTRICAL BUILDING SERVICES CONSULTANTS

P.O. Box 15, SHERWOOD Q. 4075

Phone: (07) 3278 4375

Website: www.edg.net.au Email: brisbane@edg.net.au

C3604a - 25 SOUTH PINE ROAD, BRENDALE

C3604a-0004(A).xls

DISTRIBUTION BOARD DB-1

REVISION A - 18 AUGUST 2025

<div>FAULT CURRENT: 6kA UTILISING CASCADING</div> <div>MAIN SWITCH: 250 NON AUTO LOAD BREAK</div> <div>CHASSIS SIZE: 84 POLES</div> <div>SUPPLIED FROM: DB-A</div> <div>CHASSIS RATING: 250A</div> <div>SUPPLY CABLE: 4C+E 70</div> <div>PHASES: 3</div>							REV
							A
							A
							A
PROVIDE THE DB WITH A FULL WIDTH EMPTY DIN RAIL TO ACCOMMODATE FUTURE CONTACTORS AND CONTROLS IN ADDITION TO THE DIN RAIL REQUIRED FOR THE CONTROLS PROVIDED AS PART OF THE WORKS . PROVIDE THE DB WITH AN AS2293 EMERGENCY LIGHTING CONTROL SYSTEM TO CONTROL THE EMERGENCY LIGHTS.							A
CIRC	PH	CIRCUIT BREAKER (amps)	CONTROL EQUIPMENT	CABLE SIZE (mm ²)	LOCATION	CIRCUIT USE	A
							A
P1	1	20	RCBO	2.5	STAFF	GPOs	A
P2	1	20	RCBO	2.5	AMENITY	GPOs	A
P3	3	20	RCBO	2.5	WAREHOUSE	RSD	A
L1	1	20	RCBO	2.5	WAREHOUSE	LIGHTING	A
L2	1	20	RCBO	2.5	WAREHOUSE	LIGHTING	A
L3	1	20	RCBO	2.5	WAREHOUSE	LIGHTING	A
L4	1	20	RCBO	2.5	WAREHOUSE	LIGHTING	A
L5	1	20	RCBO	2.5	WAREHOUSE	LIGHTING	A
L6	1	20	RCBO	2.5	WAREHOUSE	LIGHTING	A
L7	1	20	RCBO	2.5	WAREHOUSE	LIGHTING	A
L8	1	20	RCBO	2.5	WAREHOUSE	LIGHTING	A
L9	1	20	RCBO	2.5	AMENITY	LIGHTING	A
L10	3	20	RCBO	2.5	WAREHOUSE	FAN	A
L11	3	20	RCBO	2.5	WAREHOUSE	FAN	A
L12	3	20	RCBO	2.5	WAREHOUSE	FAN	A
L13	3	20	RCBO	2.5	WAREHOUSE	FAN	A

C3604a - 25 SOUTH PINE ROAD, BRENDAL

C3604a-0005(A).xls

DISTRIBUTION BOARD DB-2

REVISION A - 18 AUGUST 2025

[illegible]



ELECTRICAL DESIGN GROUP

ELECTRICAL BUILDING SERVICES CONSULTANTS

P.O. Box 15, SHERWOOD Q. 4075

Phone: (07) 3278 4375

Website: www.edg.net.au Email: brisbane@edg.net.au

C3604a - 25 SOUTH PINE ROAD, BRENDALE

C3604a-0006(A).xls

DISTRIBUTION BOARD DB-3

REVISION A - 18 AUGUST 2025

FAULT CURRENT: 6kA UTILISING CASCADING							REV
MAIN SWITCH: 250 NON AUTO LOAD BREAK							A
CHASSIS SIZE: 60 POLES							A
SUPPLIED FROM: DB-A							A
CHASSIS RATING: 250A							A
SUPPLY CABLE: 4C+E 70							A
PHASES: 3							A
REFER TO THE NOTES FOR ADDITIONAL REQUIREMENTS. PROVIDE THE DB WITH A FULL WIDTH EMPTY DIN RAIL TO ACCOMMODATE FUTURE CONTACTORS AND CONTROLS IN ADDITION TO THE CONTROLS PROVIDED AS PART OF THE INITIAL WORKS.							A
CIRC	PH	CIRCUIT BREAKER (amps)	CONTROL EQUIPMENT	CABLE SIZE (mm ²)	LOCATION	CIRCUIT USE	
P1	3	20	RCBO	2.5	WAREHOUSE	RSD	A
P2	3	20	RCBO	2.5	WAREHOUSE	RSD	A
P3	3	20	RCBO	2.5	WASHBAY	3PH OUTLET	A
P4	3	20	RCBO	2.5	WASHBAY	3PH OUTLET	A
P5	1	20	RCBO	2.5	WASHBAY	15A OUTLET	A
P6	1	20	RCBO	2.5	WASHBAY	15A OUTLET	A
P7	1	20	RCBO	2.5	WASHBAY	15A OUTLET	A
P8	1	20	RCBO	2.5	WASHBAY	15A OUTLET	A
L1	1	20	RCBO	2.5	WASHBAY	LIGHTS	A

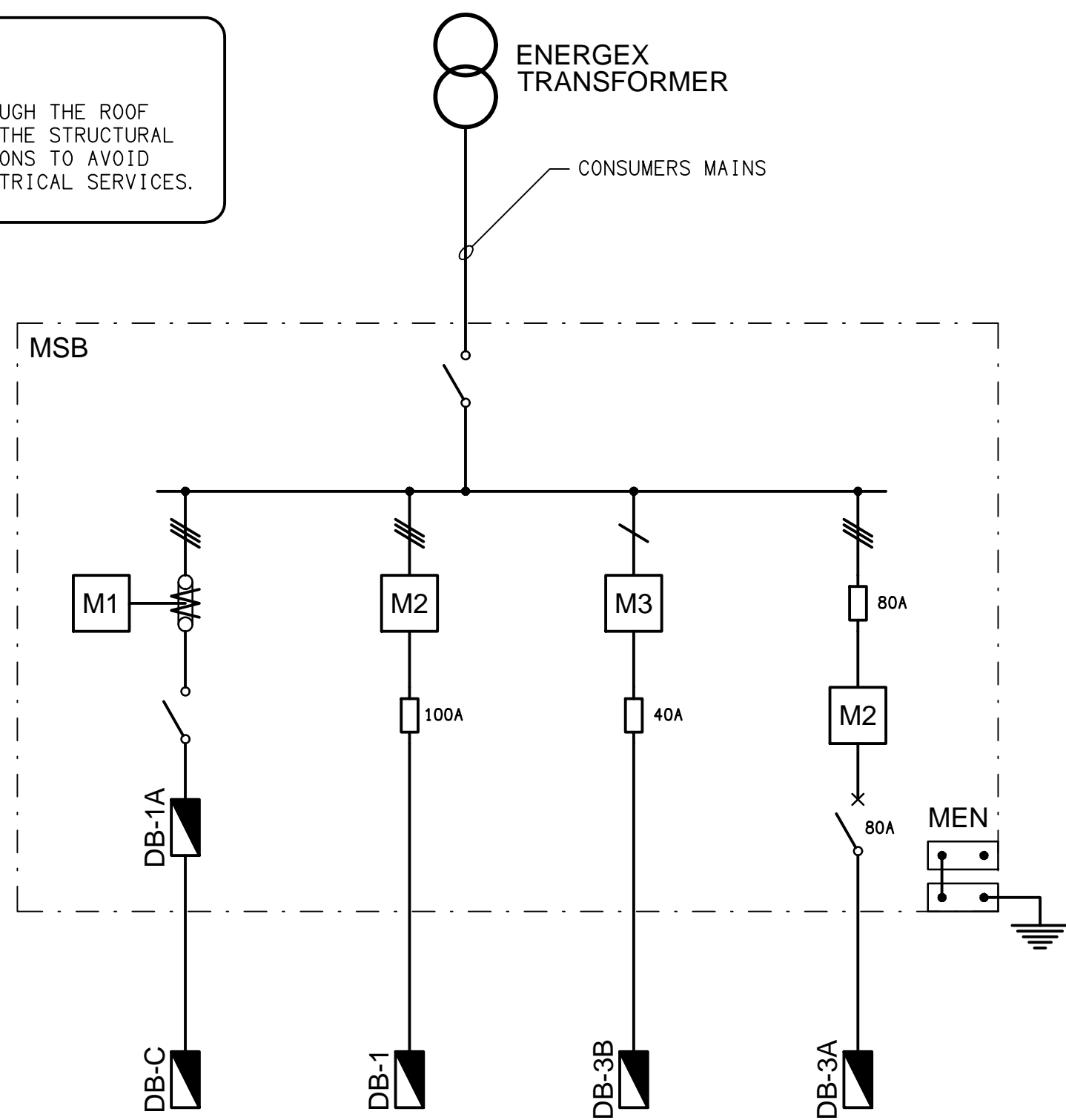
LEGEND

- ELECTRICAL SERVICES SWITCHBOARD.
- SWITCHBOARD / CONTROL PANEL NOT PROVIDED AS PART OF THE ELECTRICAL SUBCONTRACT.
- SINGLE 10A POWER OUTLET.
- SINGLE 15A IP66 POWER OUTLET.
- DOUBLE 10A POWER OUTLET.
- 20A IP66 3-PHASE POWER OUTLET.
- SINGLE PHASE ISOLATOR.
- THREE PHASE ISOLATOR.
- LIGHTING CONTROL SWITCH PANEL.
- LIGHTING PRESENCE DETECTOR.
- ONE-WAY LIGHT SWITCH.
- IP66 ONE-WAY LIGHT SWITCH.
- CIRCUIT LINE.
- SWITCH LINE.

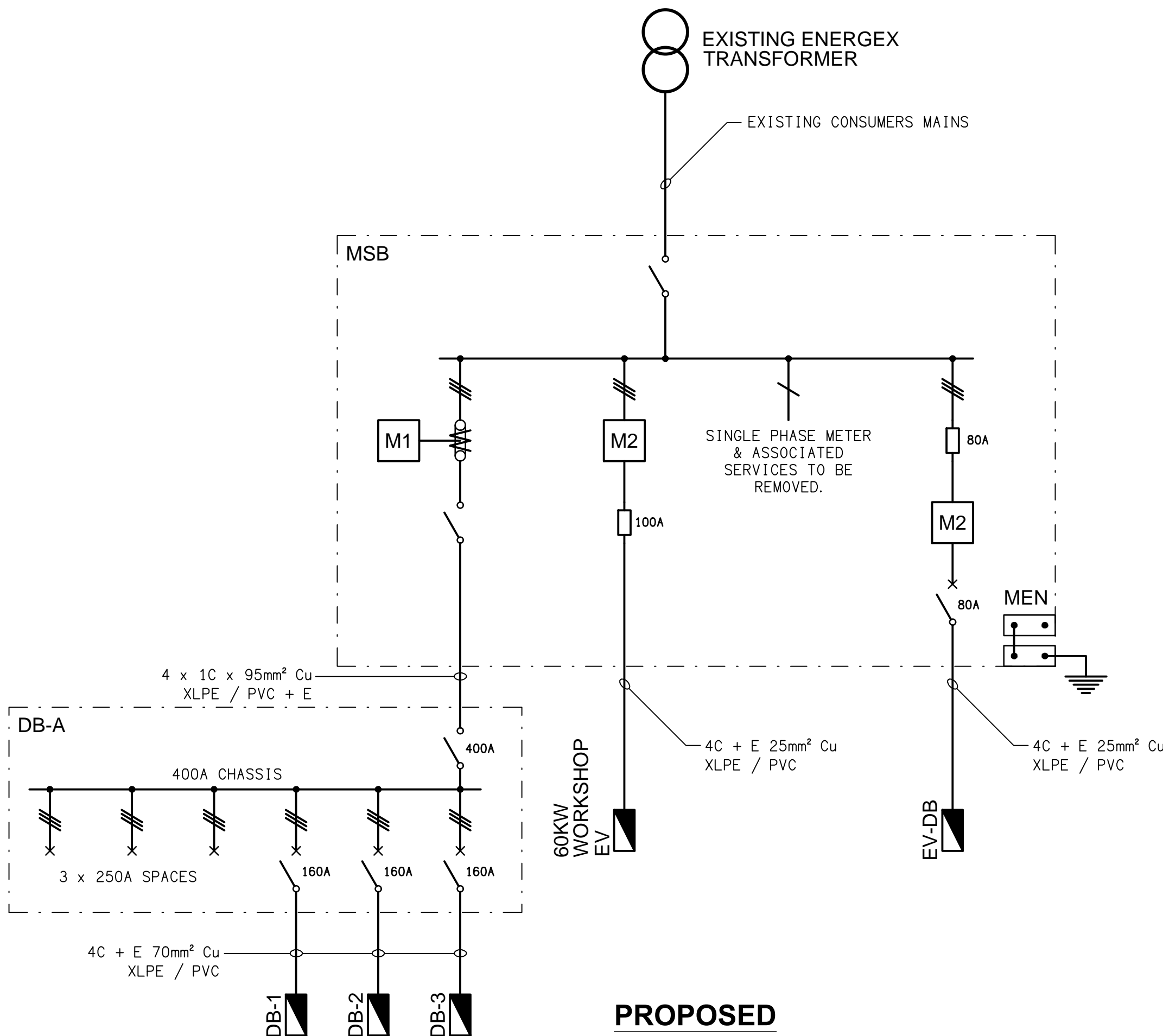
- POWER CIRCUIT DESIGNATION. DENOTES DB AND CIRCUIT.
- LIGHTING CONTROL CHANNEL REFERENCE.
- ELECTRICAL EQUIPMENT AS NOTED.
- FUTURE EV CONDUIT ACCESS.
- EXISTING CT METER TO REMAIN.
- EXISTING WHOLE CURRENT METER TO REMAIN.
- EXISTING SINGLE PHASE WHOLE CURRENT METER TO BE REMOVED.
- FUSE.
- SINGLE PHASE.
- THREE PHASE.
- CURRENT TRANSFORMER C/W REMOVABLE LINK.
- FUSE LINK.
- CIRCUIT BREAKER.
- ISOLATOR.
- E1: RECESSED EMERGENCY LIGHT.
- E2: JUMBO EMERGENCY EXIT LIGHT.
- EX: EMERGENCY EXIT LIGHT.
- F1: 5000 DIA CEILING FAN.
- L1: 1200 LONG WALL MOUNTED BATTEN.
- L2: 1200 LONG SURFACE BATTEN C/W EMERGENCY PACK.
- L3: HIGH BAY FITTING.
- L4: RECESSED DOWNLIGHT.
- L5: 600 x 600 SURFACE MOUNTED LED FLAT PANEL.

NOTE

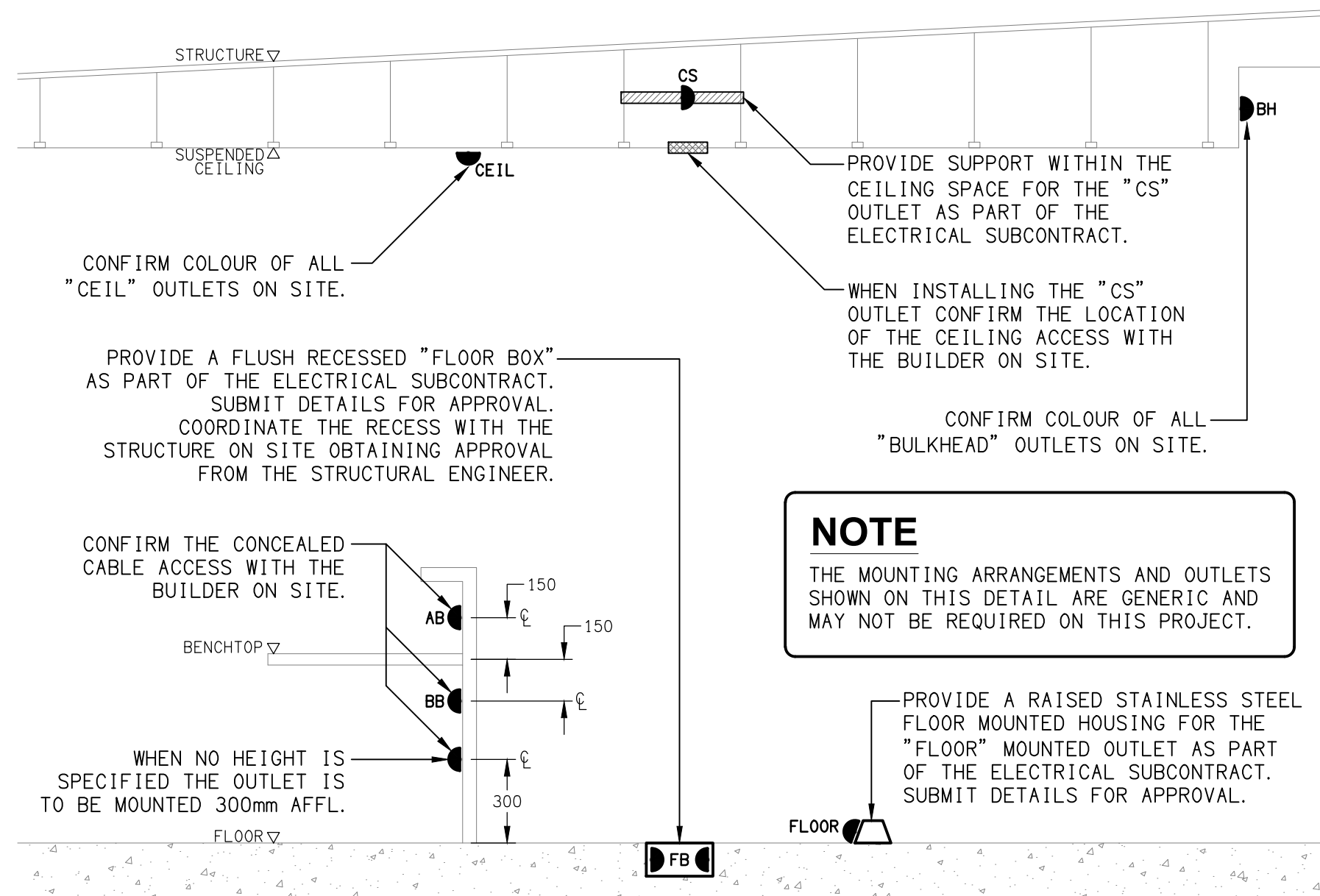
ALL ELECTRICAL PENETRATIONS THROUGH THE ROOF SHEETING ARE TO BE IN LINE WITH THE STRUCTURAL OR MECHANICAL SERVICES PENETRATIONS TO AVOID DEDICATED FLASHINGS FOR THE ELECTRICAL SERVICES.



**EXISTING
POWER SCHEMATIC**
NOT TO SCALE



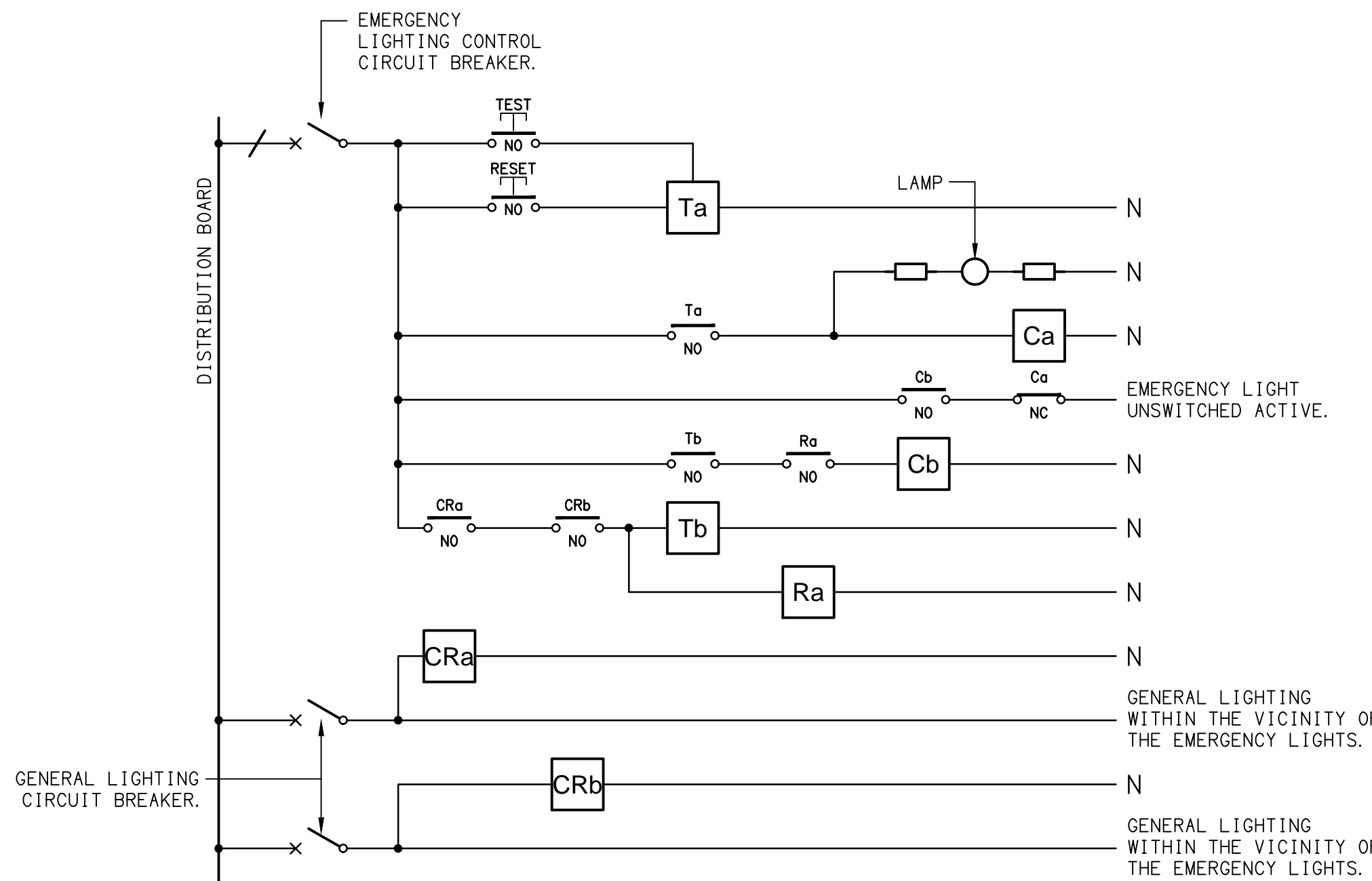
**PROPOSED
POWER SCHEMATIC**
NOT TO SCALE



**DETAIL
TYPICAL OUTLET MOUNTINGS**
NOT TO SCALE

EQUIPMENT:

- TEST - TEST PUSH BUTTON MOUNTED ON THE DISTRIBUTION BOARD ESCUTCHEON.
- RESET - RESET PUSH BUTTON MOUNTED ON THE DISTRIBUTION BOARD ESCUTCHEON.
- LAMP - AMBER TEST INDICATING LAMP MOUNTED ON THE DISTRIBUTION BOARD ESCUTCHEON.
- Ta - ADJUSTABLE 0-3 HOUR TIMED RELAY.
- Tb - 15 MINUTE RUN-ON TIMER TO OPERATE UPON THE RETURN OF MAINS POWER.
- Cx - CONTACTOR x.
- CRx - CONTROL RELAY x.
- Rx - RELAY x.



NOTES

- THE EMERGENCY LIGHT UNSWITCHED ACTIVE / GENERAL LIGHTING SWITCHED ACTIVE CIRCUIT ARRANGEMENT AND CONTROL IS TYPICAL FOR ALL CIRCUITS SUPPLYING EMERGENCY LIGHTS.
- PROVIDE ADDITIONAL CONTROL RELAYS (CRx) CONFIGURED AS PER CRa AND CRb FOR ALL ADDITIONAL LIGHTING CIRCUITS THAT SUPPLY LIGHTS IN THE VICINITY OF THE EMERGENCY LIGHTS.

ELECTRICAL DESIGN GROUP BRISBANE
PTY LTD
ACN 092 710 793

TRADING AS:
ELECTRICAL DESIGN GROUP

THE COPYRIGHT OF THIS DRAWING
REMAINS THE PROPERTY OF THE
ELECTRICAL DESIGN GROUP.

USE FIGURED DIMENSIONS
IN PREFERENCE TO SCALE.

ALL DIMENSIONS TO BE
VERIFIED ONSITE.

ELECTRICAL DESIGN GROUP
ELECTRICAL BUILDING SERVICES CONSULTANTS
BRISBANE GOLD COAST

P.O.Box 15, Sherwood Q.4075
Phone: (07) 3278 4375
Email: brisbane@edg.net.au
Web: www.edg.net.au

PROJECT:
25 SOUTH PINE ROAD, BRENDAL

QUEENSLAND

A	TENDER	18/08/2025
REV:	DESCRIPTION:	DATE:

DRAWING:
**ELECTRICAL SERVICES
LEGEND & DETAILS**

SCALE:
NOT TO SCALE AT A1

PROJECT NO:
C3604a

DRAWING NO:
E01

REVISION:
A

NOTES

1. EXTENT OF WORKS

THE ELECTRICAL SERVICES SUB-CONTRACT INCLUDES BUT IS NOT LIMITED TO THE FOLLOWING:

- SUPPLY AND INSTALLATION OF ALL COMPONENTS FORMING PART OF THE ELECTRICAL SERVICES.
- CO-ORDINATION.
- INSPECTIONS.
- TESTING AND COMMISSIONING.
- MAINTENANCE.
- CABLING, CABLE SUPPORT SYSTEMS AND ACCESS.
- POWER DISTRIBUTION.
- LIGHTING.
- THE EXISTING COMMUNICATIONS CABLING IS TO BE RETAINED AS IS.
- ALL MINOR COMPONENTS AND INCIDENTAL WORKS NOT SPECIFICALLY REFERRED TO, HOWEVER NECESSARY TO COMPLETE THE ELECTRICAL SERVICES INSTALLATION SUCH THAT IT IS HANDED OVER COMPLETE READY TO FACILITATE THE FITOUT.

PRIOR TO COMMENCING WORK CONSULT SITE MANAGEMENT FOR ANY HAZARDOUS MATERIAL AND OR ASBESTOS REGISTERS AS WELL AS UNDERTAKE A THOROUGH INSPECTION OF THE SITE TO IDENTIFY ANY POTENTIAL HAZARDOUS MATERIALS, ASBESTOS AND HEALTH OR SAFETY RISKS. ADVISE THE CONTRACTOR OF ANY POTENTIAL HAZARDOUS MATERIALS, ASBESTOS AND HEALTH OR SAFETY RISKS IF IDENTIFIED AND DO NOT COMMENCE WORK UNTIL AN APPROPRIATE MANAGEMENT PLAN HAS BEEN DEVELOPED AND AGREED TO BY ALL PARTIES.

SUPPLY ALL LABOUR, MATERIALS, EQUIPMENT, AND ALL OTHER ITEMS, WHETHER MENTIONED IN DETAIL OR NOT, REQUIRED FOR THE SATISFACTORY COMPLETION OF THE ELECTRICAL SERVICES INSTALLATION, LEAVING IN FULL WORKING ORDER TO THE SATISFACTION OF THE PROJECT MANAGER.

ACCEPT FULL RESPONSIBILITY FOR LIASING, ARRANGING AND CO-ORDINATION ALL WORKS THAT HAVE AN EFFECT ON OR WILL BE AFFECTED BY THE ELECTRICAL SERVICES.

REMOVE ALL OF THE EXISTING ELECTRICAL SERVICES THAT BECOME REDUNDANT DUE TO THE WORKS.

2. WORKMANSHIP

ENSURE THAT THE WORK IS PERFORMED BY THE HOLDER OF A CURRENT ELECTRICAL SUB CONTRACTOR LICENSE. ENSURE THE INSTALLATION AND ALL COMPONENTS, FIXTURES, FITTINGS, OUTLETS AND CABLES ARE SUPPLIED AND INSTALLED TO A HIGH STANDARD THROUGHOUT, AND INSTALLED IN A NEAT AND TRADESMAN LIKE MANNER, TO THE CURRENT INDUSTRY STANDARDS. ENSURE ALL MATERIALS AND COMPONENTS OF A SIMILAR TYPE ARE OF THE SAME MANUFACTURER AND INSTALLED IN A UNIFORM MANNER.

IT IS THE ELECTRICAL SUB CONTRACTOR'S RESPONSIBILITY TO ENSURE THAT THE INSTALLATION IS FIT FOR PURPOSE AND IS PROVIDED AS A COMPLETE WORKING INSTALLATION. IT IS THE ELECTRICAL SUB CONTRACTOR'S RESPONSIBILITY TO PROVIDE ALL COMPONENTS, FITTINGS, FIXTURES, SYSTEMS, PROGRAMMING ETC IRRESPECTIVE OF THE LEVEL DETAILED IN THE DOCUMENTS SUCH THAT THE INSTALLATION IS PROVIDED AS A COMPLETE WORKING INSTALLATION.

CONCEAL ALL WIRING AND CONDUITS. EXPOSED CABLING OR CONDUITS ARE GENERALLY NOT ACCEPTABLE. IT IS NOTED THAT CHASING AND REINSTATEMENT WILL BE REQUIRED. ENSURE ALL COMPONENTS, EQUIPMENT AND MATERIALS SUPPLIED ARE NEW, UNUSED, DESIGNED AND SELECTED TO ENSURE SATISFACTORY OPERATION UNDER VARYING ATMOSPHERIC, CLIMATIC, HUMID TROPICAL CONDITIONS WITHOUT DISTORTION AND DETERIORATION IN ANY PART AFFECTING EFFICIENCY AND RELIABILITY OF THE SYSTEMS. DESIGN AND SELECT ALL EQUIPMENT TO PROVIDE THE NECESSARY SAFETY TO HUMAN LIFE AND PROPERTY DURING OPERATION AND MAINTENANCE WITH PARTICULAR ATTENTION GIVEN TO ELECTRICAL SAFETY AND SEGREGATION PRECAUTIONS.

CHECK THE FINISHED PAINTWORK AROUND THE AREA OF EACH INSTALLATION AND TOUCH UP ALL DAMAGED PARTS AND FINISHES AFTER THE INSTALLATION OF THE ELECTRICAL SERVICES.

ALL WORKS ARE TO BE CARRIED OUT IN ACCORDANCE WITH THE BUILDER'S PROGRAM. ENSURE ALL FINAL LOCATIONS OF OUTLETS AND FITTINGS ARE CO-ORDINATED ONSITE WITH THE ARCHITECT AND ALL OTHER SERVICES, TO THE APPROVAL OF THE PROJECT MANAGER. ALLOW TO CO-ORDINATE THE FINAL LOCATION OF ALL EQUIPMENT, FITTINGS, & OUTLETS, SUCH THAT THEY ARE INSTALLED IN ACCORDANCE WITH THE AS3000 RESTRICTED ZONES, AND ARE NOT COVERED INAPPROPRIATELY.

ENSURE THAT ALL METAL SURFACES ARE SUITABLY PROTECTED AGAINST CORROSION, AND THAT ALL PLASTIC MATERIALS ARE UV STABILISED.

PROVIDE ALL MATERIALS AS NEW, AND OF THE HIGHEST CLASS AVAILABLE FOR THEIR RESPECTIVE TYPES. ENSURE ALL ASPECTS OF THE WORK ARE OF A HIGH STANDARD THROUGHOUT, AND INSTALLED IN A NEAT AND TRADESMAN LIKE MANNER, TO THE CURRENT INDUSTRY STANDARDS.

3. STANDARDS

IRRESPECTIVE OF INFORMATION CONTAINED IN THE ELECTRICAL SERVICES DOCUMENTS OR IN INSTRUCTIONS, IT IS THE ELECTRICAL SUB CONTRACTOR'S RESPONSIBILITY TO ENSURE ALL ELECTRICAL SERVICES WORKS ARE INSTALLED IN ACCORDANCE WITH THE REQUIREMENTS OF THE FOLLOWING. REFER ANY DISCREPANCIES BETWEEN THE REQUIREMENTS OF THE FOLLOWING AND/OR THE ELECTRICAL SERVICES DOCUMENTS AND INSTRUCTIONS TO THE ARCHITECT FOR CLARIFICATION PRIOR TO THE PLACING OF ORDERS, FABRICATION OR INSTALLATION OF THE ITEMS/METHODS IN DISCREPANCY.

- NCC BUILDING CODE OF AUSTRALIA.
- ELECTRICITY ACT.
- ELECTRICAL SAFETY ACT.
- AS/NZS3000.
- AS3008.
- WORKPLACE HEALTH AND SAFETY ACT.
- TELECOMMUNICATIONS ACT.
- ACMA REQUIREMENTS.

4. AUTHORITIES

ENSURE ALL OF THE ELECTRICAL SERVICES COMPLY WITH THE REQUIREMENTS OF ALL REGULATORY AUTHORITIES HAVING JURISDICTION OVER THE SITE INCLUDING BUT NOT LIMITED TO THE FOLLOWING:

- ACMA.
- LOCAL COUNCIL.
- LOCAL SUPPLY AUTHORITY.
- STATE GOVERNMENT DEPARTMENT OF ENVIRONMENT AND HERITAGE.
- QLD GOVERNMENT, DIVISION OF WORKPLACE, HEALTH AND SAFETY.
- QLD FIRE AND RESCUE AUTHORITY.

5. CABLES

UNLESS OTHERWISE SPECIFIED, INSTALL AND TERMINATE CABLES IN ACCORDANCE WITH THE MANUFACTURERS' RECOMMENDATIONS. DETERMINE THE FINAL ROUTES TO SUIT THE BUILDING STRUCTURE AND SITE CONDITIONS. UNLESS NOTED OTHERWISE, PROVIDE ALL 240 VOLT POWER AND LIGHTING WIRING AS 2.5mm² TWIN & EARTH STRANDED COPPER CONDUCTORS, PVC INSULATED 0.6/1kV V75 GRADE TO AS3174, PROTECTED BY A 20 AMP CIRCUIT BREAKER. ALL CONDUIT AND FITTINGS TO BE RIGID UPVC TO AS2053, UNLESS NOTED OTHERWISE.

NOTES

6. POWER DISTRIBUTION

THE POWER DISTRIBUTION COMPONENT OF THIS CONTRACT INCLUDES UTILISING THE EXISTING METERED POWER SUPPLIES TO SUPPLY NEW SERVICES. THE EXISTING SINGLE PHASE 40 AMP SERVICE IS TO BE REMOVED. THE EXISTING DISTRIBUTION BOARD WITHIN THE MAIN SWITCHBOARD IS TO BE REMOVED. A NEW 400 AMP MAIN DISTRIBUTION BOARD DB-A IS TO BE PROVIDED AND IN TURN USED TO SUPPLY THREE NEW DISTRIBUTION BOARD DB-1, DB-2 AND DB-3 VIA NEW SUBMAINS. THE EXISTING CT METERED SERVICE IN THE MAIN SWITCHBOARD IS TO BE USED TO SUPPLY DB-A.

A NEW EV CHARGING DISTRIBUTION BOARD EVDB IS TO BE PROVIDED AND SUPPLIED FROM THE EXISTING 80 AMP WHOLE CURRENT METERED SERVICE WITHIN THE MAIN SWITCHBOARD.

THE EXISTING 100 AMP WHOLE CURRENT METERED SERVICE WITHIN THE MAIN SWITCHBOARD IS TO BE UTILISED TO SUPPLY THE NEW 60KW WORKSHOP EV CHARGER.

THE EXISTING TWO-LEVEL OFFICE SERVICES ARE TO BE RETAINED AND RESUPPLIED FROM THE NEW DB-1.

THE EXISTING EXTERNAL SERVICES ARE TO BE RETAINED AND RESUPPLIED FROM ONE OF THE NEW DISTRIBUTION BOARDS WITH NEW SWITCHGEAR AND CONTROLS THAT MATCH THE EXISTING IN CAPACITY AND FUNCTION.

UNLESS NOTED ABOVE, ALL OF THE EXISTING INTERNAL ELECTRICAL SERVICES ARE TO BE REMOVED. ALL OF THE EXISTING SERVICES AND CABLING THAT BECOMES REDUNDANT IS TO BE REMOVED.

ALL NEW SWITCHGEAR IS TO BE FROM THE SAME MANUFACTURER.

THE POWER DISTRIBUTION COMPONENT OF THIS CONTRACT INCLUDES, BUT IS NOT LIMITED TO THE FOLLOWING EXTENT OF WORK:

- POWER DISTRIBUTION.
- EARTHING.
- MAIN SWITCHBOARD MODIFICATION.
- DB-A, DB-1, DB-2, DB-3 AND EVDB.
- SUBMAINS.
- REMOVAL OF EXISTING REDUNDANT SERVICES.
- CIRCUITS.
- ISOLATORS AND OUTLETS.
- BIG ASS FANS INCLUDING CONTROLS.
- TESTING AND COMMISSIONING.
- RECONNECTION OF ALL EXISTING SERVICES THAT REMAIN.

REFER TO THE DISTRIBUTION BOARD SCHEDULES FOR ADDITIONAL REQUIREMENTS AND CIRCUIT DETAILS.

PROVIDE DB-A AS FOLLOWS:

- FLOOR MOUNTED.
- EACH CUBICAL IS TO HAVE A MINIMUM WIDTH OF 600MM.
- IP44 FORM 1.
- LIGHT GREY ENCLOSURE WHITE ESCUTCHEON.
- 3 POINT 92268 LOCKABLE HANDLES ON ALL DOORS.
- LIFT OFF HINGES ON ALL DOORS AND ESCUTCHEONS.
- 1/4 TURN LATCHES AND D HANDLES ON ALL ESCUTCHEONS.
- ALL SWITCHGEAR TO BE NHP/TERASAKI OR SCHNEIDER.
- PROVIDE SHOP DRAWINGS FOR APPROVAL.
- ALL COMPONENTS ARE TO BE LABELLED WITH NON-STICK LABELS.

REFER TO THE POWER SCHEMATIC FOR ADDITIONAL DETAILS OF DB-A.

PROVIDE EVDB AS FOLLOWS:

- FLOOR MOUNTED. - 60 POLE 400AMP 3 PHASE VERTICAL HYBRID CHASSIS WITH 12 X 27MM POLES AND 30 X 18MM POLES.
- 400 AMP 3 PHASE LOAD BREAK NON AUTO MAIN SWITCH.
- EACH CUBICAL IS TO HAVE A MINIMUM WIDTH OF 600MM.
- IP44 FORM 1.
- LIGHT GREY ENCLOSURE WHITE ESCUTCHEON.
- 3 POINT 92268 LOCKABLE HANDLES ON ALL DOORS.
- LIFT OFF HINGES ON ALL DOORS AND ESCUTCHEONS.
- 1/4 TURN LATCHES AND D HANDLES ON ALL ESCUTCHEONS.
- A 600 WIDE SPARE DIN RAIL FOR FUTURE CONTROLS.
- ALL SWITCHGEAR TO BE NHP/TERASAKI OR SCHNEIDER.
- PROVIDE SHOP DRAWINGS FOR APPROVAL.
- ALL COMPONENTS ARE TO BE LABELLED WITH NON-STICK LABELS.

PROVIDE DISTRIBUTION BOARDS DB-1, DB-2 AND DB-3 AS FOLLOWS:

- WALL MOUNTED.
- 60 POLE 250AMP 3 PHASE VERTICAL DIN STYLE CHASSIS.
- 160 AMP 3 PHASE LOAD BREAK NON AUTO MAIN SWITCH.
- EACH CUBICAL IS TO HAVE A MINIMUM WIDTH OF 600MM.
- IP44 FORM 1.
- LIGHT GREY ENCLOSURE WHITE ESCUTCHEON.
- 3 POINT 92268 LOCKABLE HANDLES ON ALL DOORS.
- LIFT OFF HINGES ON ALL DOORS AND ESCUTCHEONS.
- 1/4 TURN LATCHES AND D HANDLES ON ALL ESCUTCHEONS.
- A 600 WIDE SPARE DIN RAIL FOR FUTURE CONTROLS.
- ALL SWITCHGEAR TO BE NHP/TERASAKI OR SCHNEIDER.
- PROVIDE SHOP DRAWINGS FOR APPROVAL.
- ALL COMPONENTS ARE TO BE LABELLED WITH NON-STICK LABELS.

NOTES

7. LIGHTING

THE EXISTING TWO-LEVEL OFFICE SERVICES ARE TO BE RETAINED AND RESUPPLIED FROM THE NEW DB-1.

THE EXISTING EXTERNAL SERVICES ARE TO BE RETAINED AND RESUPPLIED FROM ONE OF THE NEW DISTRIBUTION BOARDS WITH NEW SWITCHGEAR AND CONTROLS THAT MATCH THE EXISTING IN CAPACITY AND FUNCTION.

UNLESS NOTED ABOVE ALL OF THE EXISTING LIGHTS ARE TO BE REMOVED AND NEW LIGHTING PROVIDED.

ALL OF THE LIGHT FITTINGS, LAMPS AND ACCESSORIES ARE TO BE PROVIDED AS PART OF THIS CONTRACT. THE LIGHTING COMPONENT OF THIS CONTRACT INCLUDES, BUT IS NOT LIMITED TO THE FOLLOWING EXTENT OF WORK:

- LIGHTING.
- LIGHT FITTINGS AND ACCESSORIES.
- LAMPS.
- EARTHING OF THE LIGHTING INSTALLATION.
- LIGHTING CONTROL.
- LIGHTING SUBCIRCUITS.
- TESTING AND COMMISSIONING.

8. EMERGENCY AND EXIT LIGHTING

PROVIDE A SINGLE POINT EMERGENCY LIGHTING SYSTEM THAT COMPLIES WITH THE LATEST ISSUE OF ALL PARTS AS2293 AND THE RELEVANT PARTS OF THE NCC BCA. INSTALL EMERGENCY LIGHT FITTINGS NOMINATED AS MAINTAINED WITH THE LAMP PERMANENTLY ON SUPPLIED VIA AN UNSWITCHED ACTIVE MAINS SUPPLY WHEN THE MAINS SUPPLY IS AVAILABLE. WHEN THE MAINS SUPPLY IS NOT AVAILABLE, THE LAMP IS TO REMAIN ON SUPPLIED BY THE EMERGENCY PACK. SINGLE LAMP MAINTAINED EMERGENCY LIGHTS ARE NOT SWITCHED WITH THE LOCAL GENERAL AREA LIGHTING. (THE LAMP IS ALWAYS ON.)

INSTALL EMERGENCY LIGHT FITTINGS NOMINATED AS NON-MAINTAINED AS FOLLOWS:

- IF THE FITTING IS NOT BEING SWITCHED, THE LAMP IS TO REMAIN OFF WHEN THE MAINS SUPPLY IS AVAILABLE. WHEN THE MAINS SUPPLY IS NOT AVAILABLE THE LAMP IS TO BE SWITCHED ON SUPPLIED BY THE EMERGENCY PACK. UNSWITCHED SINGLE LAMP NON-MAINTAINED EMERGENCY LIGHTS ARE NOT SWITCHED WITH THE LOCAL GENERAL AREA LIGHTING. (THE LAMP IS ON ONLY WHEN THE MAINS SUPPLY IS NOT AVAILABLE.)
- IF THE FITTING IS BEING SWITCHED, THE LAMP IS TO BE SUPPLIED AND CONTROLLED WITH THE LOCAL GENERAL AREA LIGHTING WHEN THE MAINS SUPPLY IS AVAILABLE. WHEN THE MAINS SUPPLY IS NOT AVAILABLE THE LAMP IS TO BE SWITCHED ON, SUPPLIED BY THE EMERGENCY PACK. (THE LAMP IS ON WHEN TURNED ON WITH THE LOCAL GENERAL LIGHTING OR THE MAIN SUPPLY IS NOT AVAILABLE.)

INSTALL EMERGENCY LIGHTS SUCH THAT THE STATUS INDICATOR L.E.D. IS CLEARLY VISIBLE AND THE TEST BUTTONS ARE READILY ACCESSIBLE. LABEL EACH CIRCUIT BREAKER WHICH CONTROLS THE UNSWITCHED ACTIVE TO EXIT LIGHTS WITH A LABEL FIXED ADJACENT; ENGRAVED PLASTIC LAMINATE, GREEN BACKGROUND WITH WHITE CHARACTERS: -

WARNING
INTERRUPTING SUPPLY WILL DISCHARGE
EMERGENCY LIGHTING BATTERIES

PROVIDE WRITTEN EVIDENCE OF THE INITIAL COMMISSIONING AND TESTING AND TESTING FOR THE DURATION OF THE MAINTENANCE PERIOD IN ACCORDANCE WITH AS 2293.2.

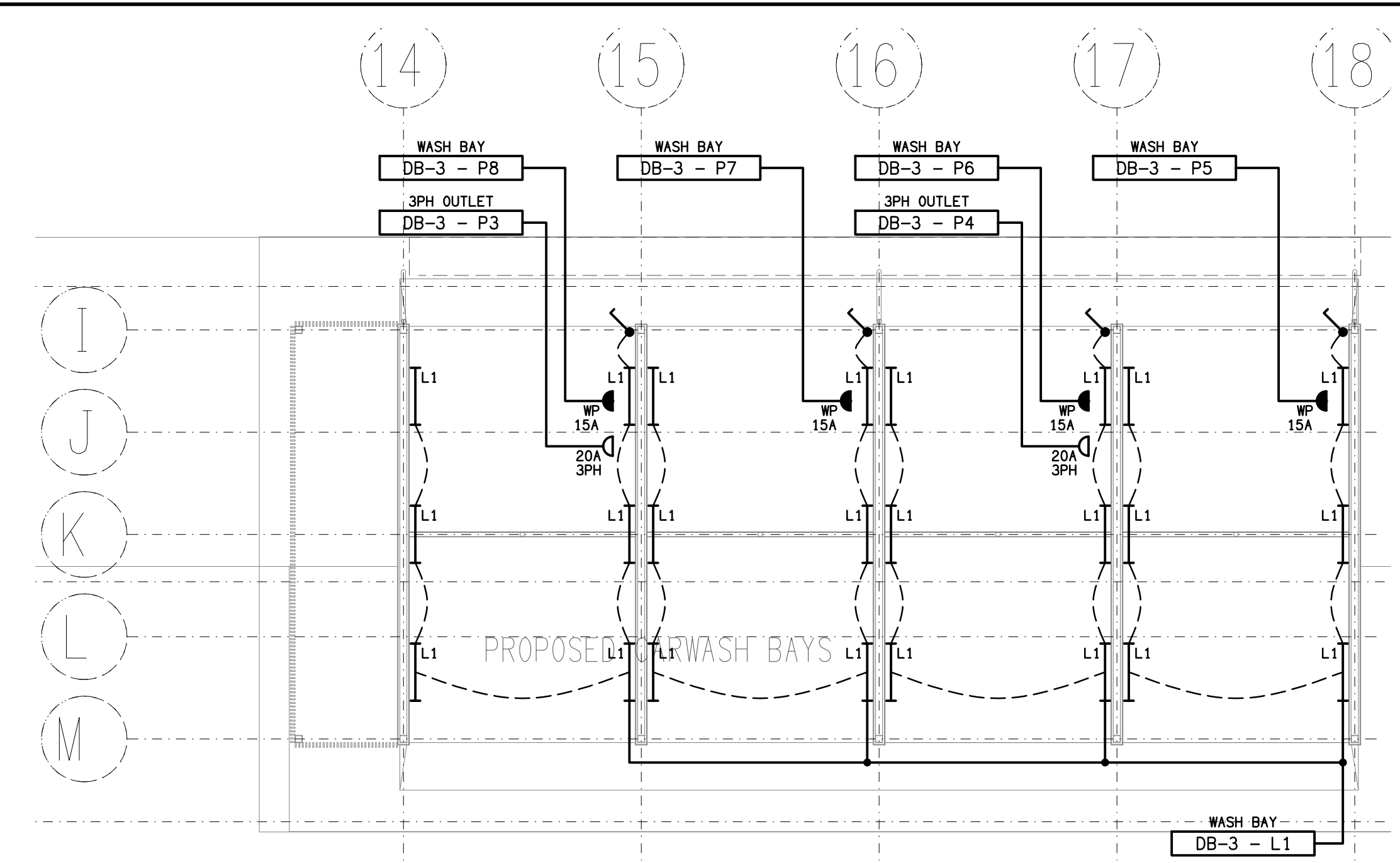
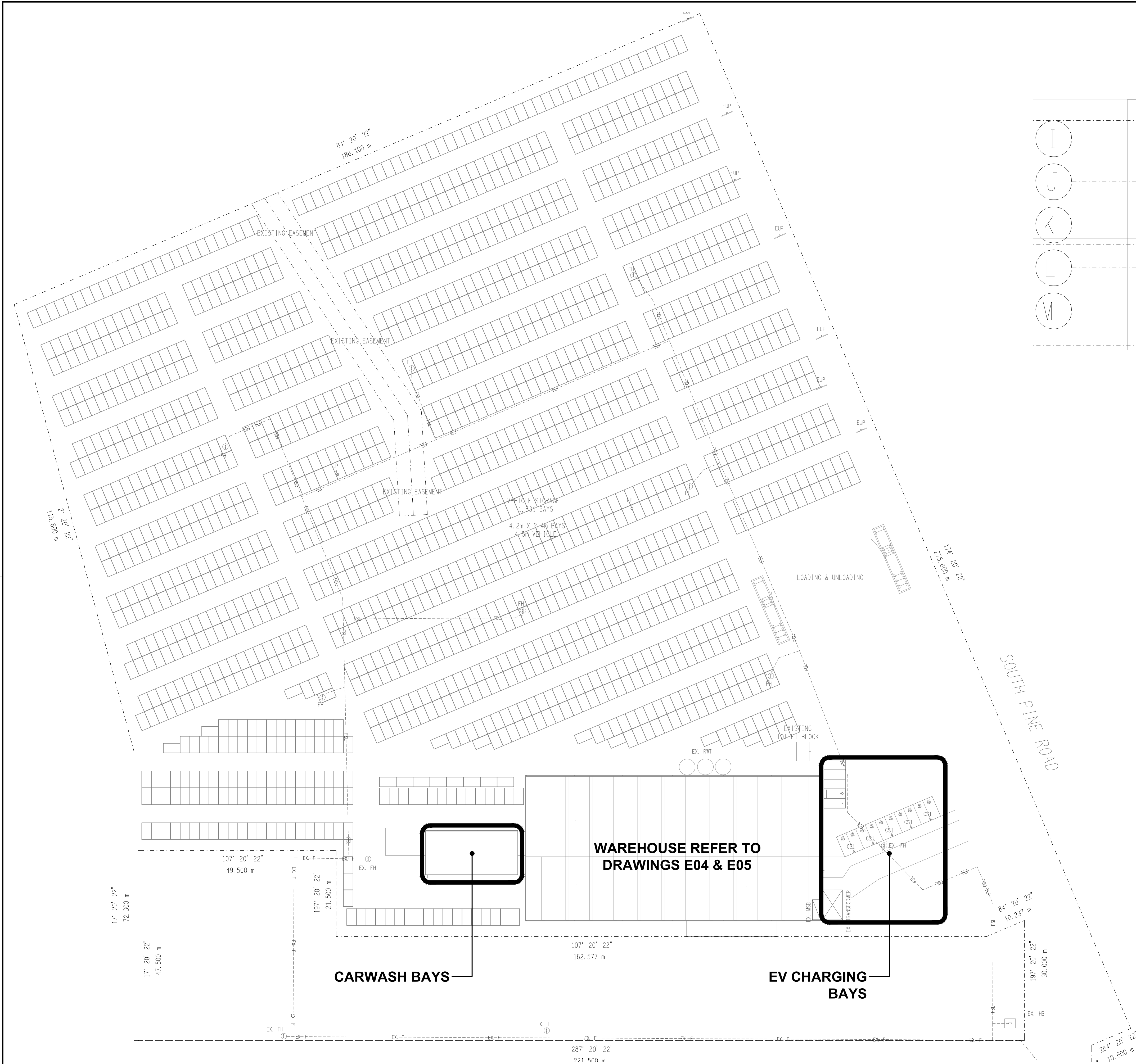
THIS EVIDENCE IS TO BE IN THE FORM OF A LOG BOOK SIMILAR TO THE GENERAL LIGHTING SERVICE PTY LTD "EMERGENCY LIGHTING MAINTENANCE LOG BOOK AND MANUAL" WHICH IS TO BE PROVIDED BY THE ELECTRICAL SUB-CONTRACTOR AND HAVE ALL ENTRIES FULLY COMPLETED AND BE PRESENTED FOR INSPECTION AT PRACTICAL COMPLETION. THE LOG BOOK IS TO BE RETAINED BY THE ELECTRICAL SUB-CONTRACTOR FOR THE DURATION OF THE MAINTENANCE PERIOD, AND THE SIX MONTHLY TEST AND MAINTENANCE RESULTS ENTERED. THE LOG BOOK IS TO BE PRESENTED FOR APPROVAL AT FINAL COMPLETION (EXPIRY OF THE MAINTENANCE PERIOD) AND WILL BE FORWARDED TO THE OPERATOR FOR THEIR USE.

PROVIDE MAINTENANCE OF THE EMERGENCY AND EXIT LIGHTING INSTALLATION INCLUDING RECORDS IN ACCORDANCE WITH THE LATEST ISSUE OF ALL PARTS AS2293 AND THE RELEVANT PARTS OF THE NCC BCA. PROVIDE THE EMERGENCY LIGHTING SYSTEM WITH A SUPPLY SENSING AND TESTING FACILITY IN ACCORDANCE WITH AS 2293.1.

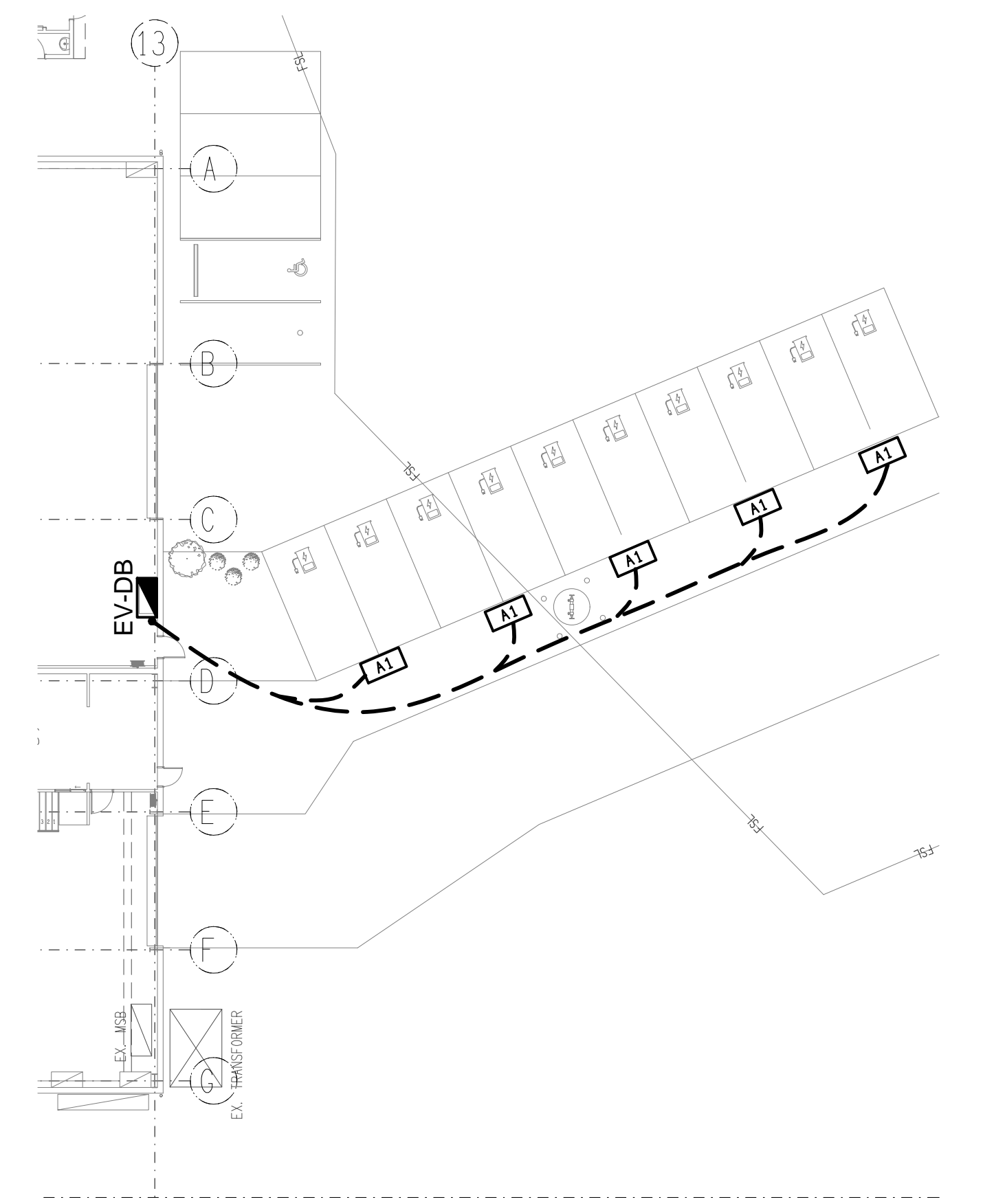
9. ABBREVIATIONS

A	-	AMP CURRENT RATING
AB	-	MOUNT ABOVE BENCH.
AFFL	-	ABOVE FINISHED FLOOR LEVEL.
BB	-	MOUNT BELOW BENCH.
BH	-	MOUNT ON BULKHEAD.
CEIL	-	MOUNT ON CEILING.
CS	-	MOUNT WITHIN CEILING SPACE.
C/W	-	COMPLETE WITH.
HWS	-	HOT WATER SYSTEM.
MCB	-	MINIATURE CIRCUIT BREAKER.
MSB	-	MAIN SWITCHBOARD.
N	-	NEON / LED INDICATOR WHEN ON.
NTS	-	NOT TO SCALE.
RCBO	-	CIRCUIT PROTECTED VIA A 30ma RESIDUAL CURRENT DEVICE INTEGRAL TO THE CIRCUIT BREAKER. 3-PHASE RCBO TO BE 4-POLE.
RSD	-	ROLLER SHUTTER DOOR.
SUS	-	MOUNT SUSPENDED FROM CEILING.
UNO	-	UNLESS NOTED OTHERWISE.
WP	-	WEATHERPROOF TO IP56 UNO.
500	-	NUMBER DENOTES MOUNTING HEIGHT AFFL.

<div>ELECTRICAL DESIGN GROUP BRISBANE PTY LTD ACN 092 710 793</div> <div>TRADING AS: ELECTRICAL DESIGN GROUP</div>		<div>THE COPYRIGHT OF THIS DRAWING REMAINS THE PROPERTY OF THE ELECTRICAL DESIGN GROUP.</div> <div>USE FIGURED DIMENSIONS IN PREFERENCE TO SCALE.</div> <div>ALL DIMENSIONS TO BE VERIFIED ONSITE.</div>		<div><div><div></div><div>ELECTRICAL DESIGN GROUP</div></div><div>ELECTRICAL BUILDING SERVICES CONSULTANTS</div><div>BRISBANE GOLD COAST</div><div>P.O.Box 15, Sherwood Q.4075 Phone: (07) 3278 4375 Email: brisbane@edg.net.au Web: www.edg.net.au</div></div>		<div>PROJECT: 25 SOUTH PINE ROAD, BRENDAL</div> <div>QUEENSLAND</div>		<div>A TENDER</div> <div>REV: DESCRIPTION: DATE:</div>		18/08/2025
								<div>DRAWING: ELECTRICAL SERVICES NOTES</div> <div>SCALE: NOT TO SCALE AT A1</div>		<div>PROJECT NO: C3604a</div>



CARWASH BAYS
FLOOR / CEILING PLAN
SCALE 1:100



EV CHARGING BAYS
FLOOR PLAN
SCALE 1:200

