



ELECTRICAL DESIGN GROUP

ELECTRICAL BUILDING SERVICES CONSULTANTS

P.O. Box 15, SHERWOOD Q. 4075

Phone: (07) 3278 4375

Website: www.edg.net.au Email: brisbane@edg.net.au

C3470a - GOLDEN BEACH TAVERN, CALOUNDRA

C3470a-0001(B).xls

ELECTRICAL SERVICES CONTRACT DOCUMENT SCHEDULE

REVISION B - 06 AUGUST 2025

ISSUING INFORMATION				DATE OF ISSUE							
	DAY	MONTH	YEAR	14	06						
				07	08						
				25	25						
				REASON FOR ISSUE		P	T				
A = APPROVAL		C = CONSTRUCTION		N = COORDINATION		P = PRELIMINARY		T = TENDER			

DISTRIBUTION				NUMBER OF COPIES							
WWW.EDG.NET.AU				1E	1E						
CAYAS & WARD ARCHITECTS				1E	1E						
P = PRINT				T = TRACING		D = DISC		E = EMAIL		F = FAX	

DOCUMENTS	TITLE	REVISION									
C3470a-E01.dwg	LEGEND & DETAILS	A	B								
C3470a-E02.dwg	NOTES	A	B								
C3470a-E03.dwg	FLOOR PLAN	A	B								
C3470a-E04.dwg	GAMING ROOM & BAR FLOOR PLANS	A	B								
C3470a-E05.dwg	REFLECTED CEILING PLAN	A	B								
C3470a-E06.dwg	JOINERY & WALL LIGHTING PLAN	A	B								
C3470a-E07.dwg	JOINERY & WALL LIGHTING ELEVATIONS	A	B								
C3470a-E08.dwg	POWER SCHEMATICS	A	B								
C3470a-0001.xls	CONTRACT DOCUMENT SCHEDULE	A	B								
C3470a-0002.xls	EQUIPMENT SCHEDULE	A	B								
C3470a-0004.xls	LIGHTING CONTROL SCHEDULE		A								
C3470a-0005.xls	DISTRIBUTION BOARD DB-E SCHEDULE		A								
C3470a-0006.xls	DISTRIBUTION BOARD DB-G SCHEDULE		A								
C3470a-0001.zip	FITTING & OUTLET DATASHEETS		A								



ELECTRICAL DESIGN GROUP

ELECTRICAL BUILDING SERVICES CONSULTANTS

P.O. Box 15, SHERWOOD Q. 4075

Phone: (07) 3278 4375 Fax: (07) 3716 0222

Web Site: www.edg.net.au Email: brisbane@edg.net.au

C3470a - GOLDEN BEACH TAVERN, CALOUNDRA

C3470a-0002(B).xls

ELECTRICAL EQUIPMENT SCHEDULE

REVISION B - 06 AUGUST 2025

THE LIGHT FITTING SUPPLIER CONTACT DETAILS MAY BE AVAILABLE ON THE EDG WEBSITE VIA THE FOLLOWING LINK
www.edg.net.au/Links/Lighting.htm

TYPE	LAMPS	DESCRIPTION	COLOUR / ACCESSORY	CATALOGUE No	REV
S1	7W/M 3000K LED	LED STRIP WITHIN A SCREW FIXED EXTRUSION C/W DIFFUSER MOUNTED WITHIN THE CURTIN PELMET AS PER THE ARCHITECTURAL DETAIL. PROVIDE THE STRIP WITH REMOTE DALI DIMMABLE POWER SUPPLIES AS REQUIRED LOCATE THE POWER SUPPLIES IN A CONCEALED ACCESSIBLE POSITION NOTED ON THE AS CONSTRUCTED DOCUMENTS.	WHITE	RAPID LED 7W/M 3,000K 24VOLT DC IP20 R2333 PLUS R2384 17 X 9 ALUMINIUM EXTRUSION AND OPAL DIFFUSER + POWER SUPPLY & DALI CONTROLLER	A
S2	7W/M 3000K LED	LED STRIP WITHIN A SCREW FIXED EXTRUSION C/W DIFFUSER MOUNTED WITHIN THE CEILING PELMET AS PER THE ARCHITECTURAL DETAIL. PROVIDE THE STRIP WITH REMOTE DALI DIMMABLE POWER SUPPLIES AS REQUIRED LOCATE THE POWER SUPPLIES IN A CONCEALED ACCESSIBLE POSITION NOTED ON THE AS CONSTRUCTED DOCUMENTS.	WHITE	RAPID LED 7W/M 3,000K 24VOLT DC IP20 R2333 PLUS R2384 17 X 9 ALUMINIUM EXTRUSION AND OPAL DIFFUSER + POWER SUPPLY & DALI CONTROLLER	A
S3	7W/M 3000K LED	LED STRIP WITHIN A SCREW FIXED EXTRUSION C/W DIFFUSER MOUNTED WITHIN THE CEILING PELMET AS PER THE ARCHITECTURAL DETAIL. PROVIDE THE STRIP WITH REMOTE DALI DIMMABLE POWER SUPPLIES AS REQUIRED LOCATE THE POWER SUPPLIES IN A CONCEALED ACCESSIBLE POSITION NOTED ON THE AS CONSTRUCTED DOCUMENTS.	WHITE	RAPID LED 7W/M 3,000K 24VOLT DC IP20 R2333 PLUS R2384 17 X 9 ALUMINIUM EXTRUSION AND OPAL DIFFUSER + POWER SUPPLY & DALI CONTROLLER	A
S4	12W/M 2700K LED	FLEXIBLE LED ROPE FLEX SCREW FIXED RECESSED INTO THE WALL PELMET AND SHELVES AS PER THE ARCHITECTURAL DETAIL. REFER TO THE ELEVATIONS FOR THE EXTENT AND QUANTITY OF STRIP. PROVIDE THE STRIP WITH REMOTE DALI DIMMABLE POWER SUPPLIES AS REQUIRED LOCATE THE POWER SUPPLIES IN A CONCEALED ACCESSIBLE POSITION NOTED ON THE AS CONSTRUCTED DOCUMENTS.	WHITE	NPA L-NF-GLOW-VWW + POWER SUPPLY & DALI CONTROLLER	A
S5	12W/M 2700K LED	FLEXIBLE LED ROPE FLEX SCREW FIXED RECESSED INTO THE PELMET BEHIND THE MIRROR AS PER THE ARCHITECTURAL DETAIL. PROVIDE THE STRIP WITH REMOTE DALI DIMMABLE POWER SUPPLIES AS REQUIRED LOCATE THE POWER SUPPLIES IN A CONCEALED ACCESSIBLE POSITION NOTED ON THE AS CONSTRUCTED DOCUMENTS. REFER TO THE ELEVATION FOR THE EXTENT AND CONFIGURATION OF THE OF THE STIP.	WHITE	NPA L-NF-GLOW-VWW + POWER SUPPLY & DALI CONTROLLER	A



ELECTRICAL DESIGN GROUP

ELECTRICAL BUILDING SERVICES CONSULTANTS

P.O. Box 15, SHERWOOD Q. 4075

Phone: (07) 3278 4375 Fax: (07) 3716 0222

Web Site: www.edg.net.au Email: brisbane@edg.net.au

C3470a - GOLDEN BEACH TAVERN, CALOUNDRA

C3470a-0002(B).xls

ELECTRICAL EQUIPMENT SCHEDULE

REVISION B - 06 AUGUST 2025

THE LIGHT FITTING SUPPLIER CONTACT DETAILS MAY BE AVAILABLE ON THE EDG WEBSITE VIA THE FOLLOWING LINK
www.edg.net.au/Links/Lighting.htm

TYPE	LAMPS	DESCRIPTION	COLOUR / ACCESSORY	CATALOGUE No	REV
S6	12W/M 2700K LED	FLEXIBLE LED ROPE FLEX SCREW FIXED RECESSED INTO THE PELMET BEHIND THE MIRROR AS PER THE ARCHITECTURAL DETAIL. PROVIDE THE STRIP WITH REMOTE DALI DIMMABLE POWER SUPPLIES AS REQUIRED LOCATE THE POWER SUPPLIES IN A CONCEALED ACCESSIBLE POSITION NOTED ON THE AS CONSTRUCTED DOCUMENTS. REFER TO THE ELEVATION FOR THE EXTENT AND CONFIGURATION OF THE OF THE STIP.	WHITE	NPA L-NF-GLOW-VWW + POWER SUPPLY & DALI CONTROLLER	A
S7	12W/M 2700K LED	FLEXIBLE LED ROPE FLEX SCREW FIXED RECESSED INTO THE WALL PELMET AND SHELVES AS PER THE ARCHITECTURAL DETAIL. REFER TO THE ELEVATIONS FOR THE EXTENT AND QUANTITY OF STRIP. PROVIDE THE STRIP WITH REMOTE DALI DIMMABLE POWER SUPPLIES AS REQUIRED LOCATE THE POWER SUPPLIES IN A CONCEALED ACCESSIBLE POSITION NOTED ON THE AS CONSTRUCTED DOCUMENTS.	WHITE	NPA L-NF-GLOW-VWW + POWER SUPPLY & DALI CONTROLLER	A
S8	12W/M 2700K LED	TWO RUNS OF FLEXIBLE LED ROPE FLEX SCREW FIXED TO THE GAMING BAR GANTRY SHELF AS PER THE ARCHITECTURAL DETAIL. PROVIDE THE STRIP WITH REMOTE DALI DIMMABLE POWER SUPPLIES AS REQUIRED LOCATE THE POWER SUPPLIES IN A CONCEALED ACCESSIBLE POSITION NOTED ON THE AS CONSTRUCTED DOCUMENTS.	WHITE	NPA L-NF-GLOW-VWW + POWER SUPPLY & DALI CONTROLLER	A
S9	12W/M 2700K LED	FLEXIBLE LED ROPE FLEX SCREW FIXED RECESSED INTO THE BAR COUNTER PELMET AS PER THE ARCHITECTURAL DETAIL. PROVIDE THE STRIP WITH REMOTE DALI DIMMABLE POWER SUPPLIES AS REQUIRED LOCATE THE POWER SUPPLIES IN A CONCEALED ACCESSIBLE POSITION NOTED ON THE AS CONSTRUCTED DOCUMENTS.	WHITE	NPA L-NF-GLOW-VWW + POWER SUPPLY & DALI CONTROLLER	A
S10	7W/M 4000K LED	LED STRIP LIGHT FIXED TO THE UNDERSIDE OF THE OVERHEAD OFFICE CUPBOARD C/W REMOTE POWER SUPPLIES LOCATED IN A CONCEALED ACCESSIBLE POSITION NOTED ON THE AS CONSTRUCTED DOCUMENTS.	WHITE	RAPID LED 7W/M 4,000K 24VOLT DC IP20 R2333 PLUS R2384 17 X 9 ALUMINIUM EXTRUSION AND OPAL DIFFUSER + POWER SUPPLY	A
S11	12W/M 2700K LED	FLEXIBLE LED ROPE FLEX SCREW FIXED RECESSED INTO THE SEAT PELMET AND SHELVES AS PER THE ARCHITECTURAL DETAIL. REFER TO THE ELEVATIONS FOR THE EXTENT AND QUANTITY OF STRIP. PROVIDE THE STRIP WITH REMOTE DALI DIMMABLE POWER SUPPLIES AS REQUIRED LOCATE THE POWER SUPPLIES IN A CONCEALED ACCESSIBLE POSITION NOTED ON THE AS CONSTRUCTED DOCUMENTS.	WHITE	NPA L-NF-GLOW-VWW + POWER SUPPLY & DALI CONTROLLER	A



ELECTRICAL DESIGN GROUP

ELECTRICAL BUILDING SERVICES CONSULTANTS

P.O. Box 15, SHERWOOD Q. 4075

Phone: (07) 3278 4375 Fax: (07) 3716 0222

Web Site: www.edg.net.au Email: brisbane@edg.net.au

C3470a - GOLDEN BEACH TAVERN, CALOUNDRA

C3470a-0002(B).xls

ELECTRICAL EQUIPMENT SCHEDULE

REVISION B - 06 AUGUST 2025

THE LIGHT FITTING SUPPLIER CONTACT DETAILS MAY BE AVAILABLE ON THE EDG WEBSITE VIA THE FOLLOWING LINK
www.edg.net.au/Links/Lighting.htm

TYPE	LAMPS	DESCRIPTION	COLOUR / ACCESSORY	CATALOGUE No	REV
S12	12W/M 2700K LED	FLEXIBLE LED ROPE FLEX SCREW FIXED RECESSED INTO THE WALL PELMET AND SHELVES AS PER THE ARCHITECTURAL DETAIL. REFER TO THE ELEVATIONS FOR THE EXTENT AND QUANTITY OF STRIP. PROVIDE THE STRIP WITH REMOTE DALI DIMMABLE POWER SUPPLIES AS REQUIRED LOCATE THE POWER SUPPLIES IN A CONCEALED ACCESSIBLE POSITION NOTED ON THE AS CONSTRUCTED DOCUMENTS.	WHITE	NPA L-NF-GLOW-VWW + POWER SUPPLY & DALI CONTROLLER	A
S13	12W/M 2700K LED	LED STRIP WITHIN A SCREW FIXED EXTRUSION C/W DIFFUSER MOUNTED BEHIND THE TV AS PER THE ARCHITECTURAL DETAIL. PROVIDE THE STRIP WITH REMOTE DALI DIMMABLE POWER SUPPLIES AS REQUIRED LOCATE THE POWER SUPPLIES IN A CONCEALED ACCESSIBLE POSITION NOTED ON THE AS CONSTRUCTED DOCUMENTS.	WHITE	RAPID LED 7W/M 3,000K 24VOLT DC IP20 R2333 PLUS R2384 17 X 9 ALUMINIUM EXTRUSION AND OPAL DIFFUSER + POWER SUPPLY & DALI CONTROLLER	A
S14	12W/M 2700K LED	FLEXIBLE LED ROPE FLEX SCREW FIXED RECESSED INTO THE EXTERNAL GAMING ENTRY CEILING AS PER THE ARCHITECTURAL DETAIL. PROVIDE THE STRIP WITH REMOTE DALI DIMMABLE POWER SUPPLIES AS REQUIRED LOCATE THE POWER SUPPLIES IN A CONCEALED ACCESSIBLE POSITION NOTED ON THE AS CONSTRUCTED DOCUMENTS. REFER TO THE DETAIL FOR THE EXTENT.	WHITE	NPA L-NF-GLOW-VWW + POWER SUPPLY & DALI CONTROLLER	A
S15	12W/M 2700K LED	FLEXIBLE LED ROPE FLEX SCREW FIXED RECESSED VERTICALLY IN THE EXTERNAL GAMING ENTRY AS PER THE ARCHITECTURAL DETAIL. PROVIDE THE STRIP WITH REMOTE DALI DIMMABLE POWER SUPPLIES AS REQUIRED LOCATE THE POWER SUPPLIES IN A CONCEALED ACCESSIBLE POSITION NOTED ON THE AS CONSTRUCTED DOCUMENTS. REFER TO THE DETAIL FOR THE EXTENT.	WHITE	NPA L-NF-GLOW-VWW + POWER SUPPLY & DALI CONTROLLER	A
S16	12W/M 2700K LED	FLEXIBLE LED ROPE FLEX SCREW FIXED RECESSED VERTICALLY IN THE EXTERNAL GAMING ENTRY AS PER THE ARCHITECTURAL DETAIL. PROVIDE THE STRIP WITH REMOTE DALI DIMMABLE POWER SUPPLIES AS REQUIRED LOCATE THE POWER SUPPLIES IN A CONCEALED ACCESSIBLE POSITION NOTED ON THE AS CONSTRUCTED DOCUMENTS. REFER TO THE DETAIL FOR THE EXTENT.	WHITE	NPA L-NF-GLOW-VWW + POWER SUPPLY & DALI CONTROLLER	A
S17	12W/M 2700K LED	FLEXIBLE LED ROPE FLEX SCREW FIXED RECESSED HORIZONTALLY INTO THE EXTERNAL GAMING ENTRY WALL AS PER THE ARCHITECTURAL DETAIL. PROVIDE THE STRIP WITH REMOTE DALI DIMMABLE POWER SUPPLIES AS REQUIRED LOCATE THE POWER SUPPLIES IN A CONCEALED ACCESSIBLE POSITION NOTED ON THE AS CONSTRUCTED DOCUMENTS. REFER TO THE DETAIL FOR THE EXTENT.	WHITE	NPA L-NF-GLOW-VWW + POWER SUPPLY & DALI CONTROLLER	A



ELECTRICAL DESIGN GROUP

ELECTRICAL BUILDING SERVICES CONSULTANTS

P.O. Box 15, SHERWOOD Q. 4075

Phone: (07) 3278 4375 Fax: (07) 3716 0222

Web Site: www.edg.net.au Email: brisbane@edg.net.au

C3470a - GOLDEN BEACH TAVERN, CALOUNDRA

C3470a-0002(B).xls

ELECTRICAL EQUIPMENT SCHEDULE

REVISION B - 06 AUGUST 2025

THE LIGHT FITTING SUPPLIER CONTACT DETAILS MAY BE AVAILABLE ON THE EDG WEBSITE VIA THE FOLLOWING LINK
www.edg.net.au/Links/Lighting.htm

TYPE	LAMPS	DESCRIPTION	COLOUR / ACCESSORY	CATALOGUE No	REV
PD01	TRAILING EDGE DIMMABLE 240 VOLT 2700K E27 LED 330 LUMENS +/- 10% 15,000 HOUR LIFE	520MM DIA DECORATIVE PENDANT ALLOW TO ASSEMBLE AND INSTALL CONFIRM THE SUSPENSION HEIGHT ONSITE WITH THE ARCHITECT	TAN HESSIAN	BEACON LIGHTING CALIDO FLARE SHADE 018402	A
PD02	TRAILING EDGE DIMMABLE 240 VOLT 2700K E27 LED 330 LUMENS +/- 10% 15,000 HOUR LIFE	600 DIA DECORATIVE PENDANT ALLOW TO ASSEMBLE AND INSTALL CONFIRM THE SUSPENSION HEIGHT ONSITE WITH THE ARCHITECT	GYPSUM	BEACON LIGHTING MLF BY MASSON BALLARE 1 CODE 017155	A
PD03	TRAILING EDGE DIMMABLE 240 VOLT 2700K E27 LED 330 LUMENS +/- 10% 15,000 HOUR LIFE	600MM DIA DECORATIVE PENDANT ALLOW TO ASSEMBLE AND INSTALL CONFIRM THE SUSPENSION HEIGHT ONSITE WITH THE ARCHITECT	RAFFIA	BEACON LIGHTING CALIDO TIER SHADE CODE 018408	A
PD04	4 LAMP TRAILING EDGE DIMMABLE 240 VOLT 2700K E27 LED 330 LUMENS +/- 10% 15,000 HOUR LIFE	1380 LING FOUR LAMP DECORATIVE PENDANT ALLOW TO ASSEMBLE AND INSTALL CONFIRM THE SUSPENSION HEIGHT ONSITE WITH THE ARCHITECT	AGED BRASS	BEACON LIGHTING MILLER 4 CODE 018111	A
PD05	TRAILING EDGE DIMMABLE 240 VOLT 2700K GU10 LED 300 LUMENS +/- 10% 15,000 HOUR LIFE	300 LONG 60MM DIA DECORATIVE PENDANT ALLOW TO ASSEMBLE AND INSTALL CONFIRM THE SUSPENSION HEIGHT ONSITE WITH THE ARCHITECT	WHITE	ABOUT SPACE TUBA PENDANT 300	B
SP01	2700K 240 LUMEN LED	JOINERY RECESSED DOWNLIGHT 65DIA 18MM DEEP C/W REMOTE DALI DIMMABLE DRIVER LOCATED IN A CONCEALED ACCESSIBLE POSITION NOTED ON THE AS CONSTRUCTED DOCUMENTS. IT IS ACCEPTABLE TO SUPPLY MULTIPLE FITTINGS FROM A COMMON SUITABLE SIZED DRIVER ENSURE ALL CABLING IS CONCEALED THROUGH THE JOINERY.	WHITE	FITTING SELECTION BY CONTRACTOR PROVIDE DETAILS FOR APPROVAL	B
TL01	9W 3000K LED PER FITTING	SUSPENDED TRACK C/W FITTINGS AS INDICATED PROVIDE EACH TRACK WITH A REMOTE DALI DIMMABLE DRIVER LOCATED IN A CONCEALED ACCESSIBLE POSITION NOTED ON THE AS CONSTRUCTED DOCUMENTS.	WHITE	LUMEN 8 NIX 45 TRACK AND SOLIS SON145TK09930 FITTINGS DALI DIMMABLE	B
TL02	9W 3000K LED PER FITTING	SUSPENDED TRACK C/W FITTINGS AS INDICATED PROVIDE EACH TRACK WITH A REMOTE DALI DIMMABLE DRIVER LOCATED IN A CONCEALED ACCESSIBLE POSITION NOTED ON THE AS CONSTRUCTED DOCUMENTS.	BLACK	LUMEN 8 NIX 45 TRACK AND SOLIS SON145TK09930 FITTINGS DALI DIMMABLE	A
WL01	TRAILING EDGE DIMMABLE 240 VOLT 2700K E14 LED 250 LUMENS +/- 10% 15,000 HOUR LIFE	300 DIA WALL LIGHT MOUNTED LIGHT AS PER THE ARCHITECTURAL ELEVATION	CLEAR / BRASS	ZEST LIGHTING GLIC CONCENTRIC CLEAR BRASS WALL LIGHT	A

C3470a-0002(B).xls

Pages inc. any attach. 4 of 8



ELECTRICAL DESIGN GROUP

ELECTRICAL BUILDING SERVICES CONSULTANTS

P.O. Box 15, SHERWOOD Q. 4075

Phone: (07) 3278 4375 Fax: (07) 3716 0222

Web Site: www.edg.net.au Email: brisbane@edg.net.au

C3470a - GOLDEN BEACH TAVERN, CALOUNDRA

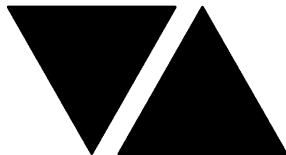
C3470a-0002(B).xls

ELECTRICAL EQUIPMENT SCHEDULE

REVISION B - 06 AUGUST 2025

THE LIGHT FITTING SUPPLIER CONTACT DETAILS MAY BE AVAILABLE ON THE EDG WEBSITE VIA THE FOLLOWING LINK
www.edg.net.au/Links/Lighting.htm

TYPE	LAMPS	DESCRIPTION	COLOUR / ACCESSORY	CATALOGUE No	REV
WL02	TRAILING EDGE DIMMABLE 240 VOLT 2700K B22 LED 250 LUMENS +/- 10% 15,000 HOUR LIFE	400 WIDE WALL LIGHT MOUNTED LIGHT AS PER THE ARCHITECTURAL ELEVATION	BRASS/	ZEST LIGHTING BRASS SLIM ROUND TUBE FUNCTIONAL PICTURE WALL LIGHT	A
WL03	TRAILING EDGE DIMMABLE 240 VOLT 2700K B22 LED 250 LUMENS +/- 10% 15,000 HOUR LIFE	300 DIA WALL LIGHT MOUNTED LIGHT AS PER THE ARCHITECTURAL ELEVATION	BRASS	ZEST LIGHTING ROUND MARBLE BRASS DECORATIVE WALL LIGHT	A
WL04	5W 3000K LED	WALL LIGHT MOUNTED LIGHT AS PER THE ARCHITECTURAL ELEVATION	BLACK	ZEST LIGHTING KOMONO BLACK REVERSIBLE	B
WL05	2 X 9W 3000K LED	EXTERNAL UP / DOWN WALL LIGHT MOUNTED LIGHT AS PER THE ARCHITECTURAL ELEVATION	BLACK	ZEST LIGHTING YILAN BLACK ANGULAR 3CCT UP / DOWN	B
WL06	4W 2700K LED	WALL LIGHT MOUNTED LIGHT AS PER THE ARCHITECTURAL ELEVATION	BRASS	NOCTURNAL LIGHTING FIREFLY DECO SPOT NL7033	B
WLE	EXISTING WALL LIGHT TO BE RETAINED AND RESUPPLIED AS INDICATED				B
RD01	13W 3000K LED	RECESSED DOWNLIGHT C/W REMOTE DALI DIMMABLE DRIVER	WHITE TRIM	EQUAL TO GAMMA ILLUMINATION CIMI 1094--FL-3K-13W	B
RD02	13W 3000K LED	RECESSED ADJUSTABLE DOWNLIGHT C/W REMOTE DALI DIMMABLE DRIVER	WHITE TRIM	EQUAL TO GAMMA ILLUMINATION CIMI 1094--FL-3K-13W	B
RD03	13W 3000K LED	RECESSED ADJUSTABLE DOWNLIGHT C/W REMOTE DALI DIMMABLE DRIVER	WHITE TRIM	EQUAL TO GAMMA ILLUMINATION RHO 1001-3K-13W	B
RD04	13W 3000K LED	RECESSED DOWNLIGHT C/W REMOTE DALI DIMMABLE DRIVER	WHITE TRIM	TYPE TO MATCH THE EXISTING EXTERNAL DOWNLIGHTS	B



ELECTRICAL DESIGN GROUP

ELECTRICAL BUILDING SERVICES CONSULTANTS

P.O. Box 15, SHERWOOD Q. 4075

Phone: (07) 3278 4375 Fax: (07) 3716 0222

Web Site: www.edg.net.au Email: brisbane@edg.net.au

C3470a - GOLDEN BEACH TAVERN, CALOUNDRA

C3470a-0002(B).xls

ELECTRICAL EQUIPMENT SCHEDULE

REVISION B - 06 AUGUST 2025

THE LIGHT FITTING SUPPLIER CONTACT DETAILS MAY BE AVAILABLE ON THE EDG WEBSITE VIA THE FOLLOWING LINK
www.edg.net.au/Links/Lighting.htm

TYPE	LAMPS	DESCRIPTION	COLOUR / ACCESSORY	CATALOGUE No	REV
L1	34W 4000K LED	600 X 600 LAY SURFACE MOUNTED FLAT PLATE LED FITTING C/W REMOTE DRIVER MOUNTED IN A SURFACE MOUNTING KIT	WHITE TRIM	EQUAL TO GAMMA ILLUMINATION AXIS 1548-4K-34W C/W SURFACE MOUNTING KIT	B
UL01	22W 3000K LED	260 DIA INGROUND UPLIGHT C/W INTERGRAL DALI DRIVER	STAINLESS STEEL	EQUAL TO GAMMA ILLUMINATION AURA 1059-FL-3K-22W	B
FS01	1W LED AT 500 CENTRES	FESTOON LIGHTING WITH 24V DC IP65 FESTOON LIGHTING TO BE FIXED TO A 316 STAINLESS STEEL WIRE SUPPORT SYSTEM. LOCATE THE DRIVER IN A CONCEALED ACCESSIBLE POSITION NOTED ON THE AS CONSTRUCTED DOCUMENTS. CONFIRM THE LENGTH AND POSITION ON SITE	BLACK CABLE AND FIXINGS 316 STAINLESS STEEL SUPPORT AND FIXINGS	FIRE FLY FFC-LS-50-24VE27-BK	A
GL01	5W 3000K LED	GARDEN ELV SPIKE LIGHT. PROVIDE EACH GROUP OF GL01 FITTINGS WITH A REMOTE COMMON DALI DIMMABLE DRIVER. LOCATE DRIVER /POWER SUPPLY IN A CONCEALED ACCESSIBLE POSITION NOTED ON THE AS CONSTRUCTED DOCUMENTS.	BLACK	EQUAL TO GAMMA ILLUMINATION RULOJ 885102	A
E1	LED	EMERGENCY LIGHT: RECESSED NON-MAINTAINED EMERGENCY LIGHT. AS2293 CLASSIFICATION C0-D40 - C90-D40.	WHITE	CLEVERTRONICS LLIFE	A
E2	LED	EMERGENCY LIGHT: SURFACE MOUNTED NON-MAINTAINED EMERGENCY LIGHT. AS2293 CLASSIFICATION C0-D40 - C90-D40.	WHITE	CLEVERTRONICS CLIFE-SM	B
EX	LED	EXIT LIGHT: MAINTAINED 24M VIEWING DISTANCE EXIT LIGHT C/W DIFFUSERS & DIRECTIONAL ARROWS AS SHOWN. CEILING SURFACE MOUNT OR WALL MOUNT BETWEEN 2100mm & 2700mm AFFL IF THERE IS NO VERTICAL SURFACE TO MOUNT THE FITTING ON WITHIN THIS RANGE CONFIRM THE MOUNTING HEIGHT WITH THE ENGINEER. AS2293 CLASSIFICATION C0-D1.25- C90-D2	WHITE UNLESS NOTED AS BK THEN BLACK BODY	CLEVERTRONICS LUBPRO-SM	A
F01	CEILING FAN	132 DIA DC MOTOR CEILING FAN. PROVIDE THE F01 WITH A DEDICATED WIRED CONTROLLER CONFIRM THE DROP ON SITE WITH THE ARCHITECT	BLACK	BIG ASS FANS HAIKU K3127	A
FAN CONTROLLER		FAN ON / OFF / SPEED CONTROLS. WALL MOUNTED AT 1000 AFFL	WHITE	TYPE TO MATCH THE FAN F01	A
HEATER (HRE)		EXISTING HEATER TO BE RETAINED AND RESUPPLIED AS INDICATED			A



ELECTRICAL DESIGN GROUP

ELECTRICAL BUILDING SERVICES CONSULTANTS

P.O. Box 15, SHERWOOD Q. 4075

Phone: (07) 3278 4375 Fax: (07) 3716 0222

Web Site: www.edg.net.au Email: brisbane@edg.net.au

C3470a - GOLDEN BEACH TAVERN, CALOUNDRA

C3470a-0002(B).xls

ELECTRICAL EQUIPMENT SCHEDULE

REVISION B - 06 AUGUST 2025

THE LIGHT FITTING SUPPLIER CONTACT DETAILS MAY BE AVAILABLE ON THE EDG WEBSITE VIA THE FOLLOWING LINK
www.edg.net.au/Links/Lighting.htm

TYPE	LAMPS	DESCRIPTION	COLOUR / ACCESSORY	CATALOGUE No	REV
HEAT LAMP (HL01)		PASS OUT HEATLAMP	WHITE GRANITE	HATCO DL, DLH, DLL-725	B
CHANNEL x		CONTROL CHANNEL WITH A NUMERICAL REFERENCE. REFER TO THE POWER AND LIGHTING CONTROL SCHEMATIC / SCHEDULE			A
ONE-WAY LIGHT SWITCH		ONE-WAY LIGHT SWITCH C/W CIRCUIT IDENTIFICATION ON THE FACEPLATE BEHIND THE SURROUND MOUNTED AT 1000mm AFFL UNLESS NOTED OTHERWISE.	WHITE	CLIPSAL C2000 SERIES 30USM	A
TWO-WAY LIGHT SWITCH		TWO-WAY LIGHT SWITCH C/W CIRCUIT IDENTIFICATION ON THE FACEPLATE BEHIND THE SURROUND MOUNTED AT 1000mm AFFL UNLESS NOTED OTHERWISE.	WHITE	CLIPSAL C2000 SERIES 30USM	A
LIGHTING CONTROL SWITCH PANEL (SPx)		6-BUTTON PROGRAMMABLE SWITCH PANEL C/W CENTRAL LCD DISPLAY MOUNTED AT 1000mm AFFL UNLESS NOTED OTHERWISE.	ALUMINIUM	DYNALITE ANTUMBRA DISPLAY	A
SINGLE POWER OUTLET		SINGLE POWER OUTLET C/W CIRCUIT IDENTIFICATION ON THE FACEPLATE BEHIND THE SURROUND MOUNT AT 300mm AFFL U.N.O. RATING 10A U.N.O.	WHITE UNLESS NOTED AS BLACK (BK)	CLIPSAL C2000 SERIES	A
SINGLE POWER OUTLET AUTO DOOR (AD)		SINGLE POWER OUTLET C/W CIRCUIT IDENTIFICATION ON THE FACEPLATE BEHIND THE SURROUND MOUNTED CONCEALED WITHIN THE AUTO DOOR MULLION. RATING 10A U.N.O.	WHITE	CLIPSAL C2000 SERIES	A
DOUBLE POWER OUTLET		DOUBLE POWER OUTLET C/W CIRCUIT IDENTIFICATION ON THE FACEPLATE BEHIND THE SURROUND MOUNT AT 300mm AFFL U.N.O. RATING 10A U.N.O.	WHITE UNLESS NOTED AS BLACK (BK)	CLIPSAL C2000 SERIES	A
DOUBLE POWER OUTLET (USB)		DOUBLE POWER OUTLET C/W USB A AND USB C CHARGER, CIRCUIT IDENTIFICATION ON THE FACEPLATE BEHIND THE SURROUND MOUNT AT 300mm AFFL U.N.O. RATING 10A U.N.O.	WHITE UNLESS NOTED AS BLACK (BK)	CLIPSAL C2000 SERIES	B
WEATHERPROOF POWER OUTLET (WP)		IP54 WEATHERPROOF SINGLE / DOUBLE POWER OUTLET AS NOTED ON DRAWING C/W COVER FLAP OVER SOCKET. MOUNT AT MINIMUM 1100mm AFFL U.N.O. RATING 10A U.N.O.	-	CLIPSAL WSCF227F	A
GAMING TAB OUTLET		GAMING / TAB OUTLETS PROVIDED BY THE GAMING ELECTRICIAN. REFER TO THE NOTES FOR ADDITIONAL DETAILS ON THE SCOPE.			A
SIGN CONNECTION		COORDINATE THE LOCATION AND CONNECTION WITH THE SIGN CONTRACTOR ENSURING THE GPO / ISOLATORS ARE PROVIDED WITH APPROPRIATE WEATHER PROTECTION AND ARE CONCEALED FROM VIEW.			A
SINGLE-PHASE ISOLATOR		SINGLE-PHASE WEATHERPROOF ISOLATOR. MOUNT AT 1350mm AFFL U.N.O. RATING 20A U.N.O. CONNECT TO EQUIPMENT VIA FLEXIBLE CONDUIT.	-	CLIPSAL WHT20	A
THREE-PHASE ISOLATOR		THREE-PHASE WEATHERPROOF ISOLATOR. MOUNT AT 1350mm AFFL U.N.O. RATING 20A U.N.O. CONNECT TO EQUIPMENT VIA FLEXIBLE CONDUIT.	-	CLIPSAL WHT35	A

C3470a-0002(B).xls

Pages inc. any attach. 7 of 8



ELECTRICAL DESIGN GROUP

ELECTRICAL BUILDING SERVICES CONSULTANTS

P.O. Box 15, SHERWOOD Q. 4075

Phone: (07) 3278 4375 Fax: (07) 3716 0222

Web Site: www.edg.net.au Email: brisbane@edg.net.au

C3470a - GOLDEN BEACH TAVERN, CALOUNDRA

C3470a-0002(B).xls

ELECTRICAL EQUIPMENT SCHEDULE

REVISION B - 06 AUGUST 2025

THE LIGHT FITTING SUPPLIER CONTACT DETAILS MAY BE AVAILABLE ON THE EDG WEBSITE VIA THE FOLLOWING LINK
www.edg.net.au/Links/Lighting.htm

TYPE	LAMPS	DESCRIPTION	COLOUR / ACCESSORY	CATALOGUE No	REV
M1		EXISTING SUPPLY AUTHORITY METER			A
M2		EXISTING MDI			A
M3		SUPPLY AUTHORITY NATIONAL ELECTRICITY MARKET CODE COMPLIANT LV MAXIMUM DEMAND TARIFF METER C/W ALL NECESSARY CABLING AND CTS ETC.			A
M4		PROVIDE A MULTIFUNCTION METER THAT LOGS THE FOLLOWING ACROSS EACH PHASE, DEMANDS , VOLTAGES, POWER FACTORS, AND HARMONICS.			A
MSB		EXISTING MAIN SWITCHBOARD TO BE REPLACED. REFER TO THE SCHEMATICS AND NOTES FOR ADDITIONAL DETAILS. REINSTATE THE EXISTING REFRIGERATION CONTACTORS AND CONTROLS LOCATED WITHIN HE EXISTING MSB INTO THE NEW MSB.			A
DB-A		EXISTING DISTRIBUTION BOARD DB-A INTEGRAL TO THE EXISTING MSB. RECONNECT ALL OF THE EXISTING DB-A CIRCUITS THAT REMAIN INTO THE NEW DISTRIBUTION BOARD DB-A PROVIDED AS PART OF THE NEW MSB.			A
CIRCUIT DB-A - P1		PROVIDE CIRCUIT DB-A -P1 AS A NEW 20 AMP RCBO PROTECTED 2.5MM TPS CIRCUIT SUPPLIED FROM DB-A TO SUPPLY THE NEW KITCHEN HEAT LAMPS.			B
DB-B		EXISTING DISTRIBUTION BOARD DB-B INTEGRAL TO THE EXISTING MSB. RECONNECT ALL OF THE EXISTING DB-B CIRCUITS THAT REMAIN INTO THE NEW DISTRIBUTION BOARD DB-A PROVIDED AS PART OF THE NEW MSB.			A
DB-D		EXISTING DISTRIBUTION BOARD DB-D TO REMAIN. REMOVE ALL SWITCHGEAR THAT BECOMES REDUNDANT DUE TO THE WORKS.			A
DB-R		EXISTING DISTRIBUTION BOARD DB-R TO REMAIN. REMOVE ALL SWITCHGEAR THAT BECOMES REDUNDANT DUE TO THE WORKS.			A
DB-G		NEW DISTRIBUTION BOARD DB-G. REFER TO THE DB-G SCHEDULE AND NOTES FOR ADDITIONAL REQUIREMENTS.			A
DB-E		NEW DISTRIBUTION BOARD DB-E. REFER TO THE DB-G SCHEDULE AND NOTES FOR ADDITIONAL REQUIREMENTS.			A



ELECTRICAL DESIGN GROUP

ELECTRICAL BUILDING SERVICES CONSULTANTS

P.O. Box 15, SHERWOOD Q. 4075

Phone: (07) 3278 4375 Fax: (07) 3716 0222

Web Site: www.edg.net.au Email: brisbane@edg.net.au

C3470a - GOLDEN BEACH TAVERN, CALOUNDRA

C3470a-0004(A).xls

LIGHTING CONTROL SCHEDULE

REVISION A - 06 AUGUST 2025

MISCELLANEOUS EQUIPMENT					REV
ITEM	DESCRIPTION				A
SP1	AS DETAILED IN THE EQUIPMENT SCHEDULE 6-BUTTON PROGRAMMABLE SWITCH PANEL C/W CENTRAL LCD DISPLAY DYNALITE ANTUMBRA DISPLAY ALUMINIUM				A
SP2	AS DETAILED IN THE EQUIPMENT SCHEDULE 6-BUTTON PROGRAMMABLE SWITCH PANEL C/W CENTRAL LCD DISPLAY DYNALITE ANTUMBRA DISPLAY ALUMINIUM				A
PE CELL	PROGRAMMABLE PE CELL DUS 90CS CONFIRM THE LOCATION ON SITE WITH THE ARCHITECT				A
TIME CLOCK	PROGRAMMABLE TIME CLOCK ENVISION GATEWAY PDEG LOCATED IN DB-2				A
CONTROL MODULE 1					A
TYPE:		DYNALITE DDRC1220FR-GL			A
DESCRIPTION		12CH 20 A FEEDTHROUGH RELAY CONTROLLER			A
LOCATION		DIN RAIL MOUNTED WITHIN DB-E			A
BUS:		A			A
CHANNEL	CONTROL	DESCRIPTION			A
		LOCATION	CIRCUIT	USE	A
E1	SWITCHED	EXTERNAL	DB-E - L1	FS01	A
E2	SWITCHED	EXTERNAL	DB-E - L1	FS01	A
E3					A
E4					A
E5					A
E6					A
E7					A
E8					A
E9					A
E10					A
E11					A
E12					A
CONTROL MODULE 2					A
TYPE:		DYNALITE DDMC802			A
DESCRIPTION		8CH MODULAR CONTROLLER			A
LOCATION		DIN RAIL MOUNTED WITHIN DB-E			A
BUS:		A			A
CHANNEL	CONTROL	DESCRIPTION			A
		LOCATION	CIRCUIT	USE	A
E13	DGTM202		DB-E -L2	WL05	A
E14				WL05	A
E15	DGTM202			WL01	A
E16				WL04	A
E17	DGTM202			WL01	A
E18				WL02	A
E19					A
E20					A



ELECTRICAL DESIGN GROUP

ELECTRICAL BUILDING SERVICES CONSULTANTS

P.O. Box 15, SHERWOOD Q. 4075

Phone: (07) 3278 4375 Fax: (07) 3716 0222

Web Site: www.edg.net.au Email: brisbane@edg.net.au

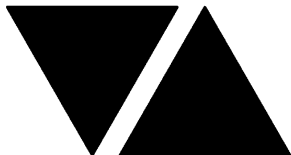
C3470a - GOLDEN BEACH TAVERN, CALOUNDRA

C3470a-0004(A).xls

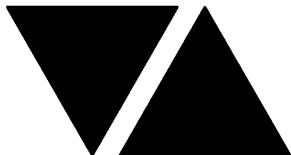
LIGHTING CONTROL SCHEDULE

REVISION A - 06 AUGUST 2025

CONTROL MODULE 3					A
TYPE:		DYNALITE DDMC802			A
DESCRIPTION		8CH MODULAR CONTROLLER			A
LOCATION		DIN RAIL MOUNTED WITHIN DB-E			A
BUS:		A			A
CHANNEL	CONTROL	DESCRIPTION			A
		LOCATION	CIRCUIT	USE	A
E21	DGTM202		DB-E -L3	PD02 PD03	A
E22				PD01	A
E23	DGTM202			PD05	A
E24					A
E25					A
E26					A
E27					A
E28					A
CONTROL MODULE 4					
TYPE:		DYNALITE DDBC1200			A
DESCRIPTION		12CH BOARD CAST DALI CONTROLLER			A
LOCATION		DIN RAIL MOUNTED WITHIN DB-E			A
BUS:		A			A
CHANNEL	CONTROL	DESCRIPTION			A
		LOCATION	CIRCUITS	USE	A
E29	DALI DIM	EXTERNAL	DB-E - L4	UL01	A
E30	DALI DIM	EXTERNAL	DB-E - L4	UL01	A
E31	DALI DIM		DB-E - L4	GL01	A
E32	DALI DIM		DB-E - L4	GL01	A
E33	DALI DIM		DB-E - L4	GL01	A
E34	DALI DIM	AMENITY	DB-E - L5	S6	A
E35	DALI DIM		DB-E - L5	S11	A
E36	DALI DIM		DB-E - L5	S9	A
E37	DALI DIM		DB-E - L5	S4	A
E38	DALI DIM		DB-E - L5	S13	A
E39	DALI DIM		DB-E - L5	S9	A
E40	DALI DIM		DB-E - L5	S12	A

**C3470a - GOLDEN BEACH TAVERN, CALOUNDRA****C3470a-0004(A).xls****LIGHTING CONTROL SCHEDULE****REVISION A - 06 AUGUST 2025**

CONTROL MODULE 5					A
TYPE:		DYNALITE DDBC1200			A
DESCRIPTION		12CH BOARD CAST DALI CONTROLLER			A
LOCATION		DIN RAIL MOUNTED WITHIN DB-E			A
BUS:		A			A
CHANNEL	CONTROL	DESCRIPTION			A
		LOCATION	CIRCUITS	USE	A
E41	DALI DIM	AMENITY	DB-E - L6	RD01 & RD03	A
E42	DALI DIM		DB-E - L6	RD01	A
E43	DALI DIM		DB-E - L7	TL01	A
E44	DALI DIM		DB-E - L7	RD01	A
E45	DALI DIM		DB-E - L7	S3	A
E46	DALI DIM	BAR	DB-E - L8	RD01	A
E47	DALI DIM	BAR	DB-E - L8	RD02	A
E48	DALI DIM	BAR	DB-E - L8	RD02	A
E49	DALI DIM		DB-E - L8	RD02	A
E50	DALI DIM		DB-E - L8	RD01	A
E51					A
E52					A
CONTROL MODULE 6					A
TYPE:		DYNALITE DDBC1200			A
DESCRIPTION		12CH BOARD CAST DALI CONTROLLER			A
LOCATION		DIN RAIL MOUNTED WITHIN DB-E			A
BUS:		A			A
CHANNEL	CONTROL	DESCRIPTION			A
		LOCATION	CIRCUITS	USE	A
E53	DALI DIM	EXTERNAL	DB-E - L9	RD04	A
E54	DALI DIM	EXTERNAL	DB-E - L9	RD04	A
E55	DALI DIM	EXTERNAL	DB-E - L9	RD04	A
E56	DALI DIM		DB-E - L10	S13	A
E57	DALI DIM		DB-E - L10	TL02	A
E58	DALI DIM		DB-E - L10	RD01	A
E59	DALI DIM		DB-E - L10	RD02	A
E60					A
E61					A
E62					A
E63					A
E64					A



ELECTRICAL DESIGN GROUP

ELECTRICAL BUILDING SERVICES CONSULTANTS

P.O. Box 15, SHERWOOD Q. 4075

Phone: (07) 3278 4375 Fax: (07) 3716 0222

Web Site: www.edg.net.au Email: brisbane@edg.net.au

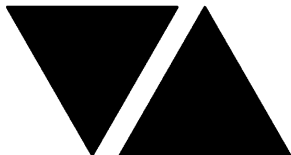
C3470a - GOLDEN BEACH TAVERN, CALOUNDRA

C3470a-0004(A).xls

LIGHTING CONTROL SCHEDULE

REVISION A - 06 AUGUST 2025

CONTROL MODULE 7					A
TYPE:		DYNALITE DDRC1220FR-GL			A
DESCRIPTION		12CH 20 A FEEDTHROUGH RELAY CONTROLLER			A
LOCATION		DIN RAIL MOUNTED WITHIN DB-G			A
BUS:		A			A
CHANNEL	CONTROL	DESCRIPTION			A
		LOCATION	CIRCUIT	USE	A
G1	SWITCHED	GAMING	DB-G -P15	SIGN	A
G2	SWITCHED	GAMING	DB-G -P16	SIGN	A
G3	SWITCHED	GAMING	DB-G -P17	SIGN	A
G4	SWITCHED	GAMING	DB-G -P18	SIGN	A
G5	SWITCHED	GAMING	DB-G -P19	SIGN	A
G6	SWITCHED	ENTRY	DB-G -L1	SIGN	A
G7	SWITCHED	DOSA	DB-G -L2	WLE	A
G8					A
G9					A
G10					A
G11					A
G12					A
CONTROL MODULE 8					A
TYPE:		DYNALITE DDMC802			A
DESCRIPTION		8CH MODULAR CONTROLLER			A
LOCATION		DIN RAIL MOUNTED WITHIN DB-G			A
BUS:		A			A
CHANNEL	CONTROL	DESCRIPTION			A
		LOCATION	CIRCUIT	USE	A
G13	DGTm202		DB-G -L2	WL06	A
G14				WL06	A
G15	DGTm202			WL06	A
G16				WL03	A
G17	DGTm202			WL03	A
G18				WL03	A
G19	DGTm202			PD04	A
G20				PD04	A



ELECTRICAL DESIGN GROUP

ELECTRICAL BUILDING SERVICES CONSULTANTS

P.O. Box 15, SHERWOOD Q. 4075

Phone: (07) 3278 4375 Fax: (07) 3716 0222

Web Site: www.edg.net.au Email: brisbane@edg.net.au

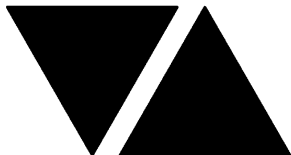
C3470a - GOLDEN BEACH TAVERN, CALOUNDRA

C3470a-0004(A).xls

LIGHTING CONTROL SCHEDULE

REVISION A - 06 AUGUST 2025

CONTROL MODULE 9					A
TYPE:		DYNALITE DDBC1200			A
DESCRIPTION		12CH BOARD CAST DALI CONTROLLER			A
LOCATION		DIN RAIL MOUNTED WITHIN DB-G			A
BUS:		A			A
CHANNEL	CONTROL	DESCRIPTION			A
		LOCATION	CIRCUITS	USE	A
G21	DALI DIM		DB-G - L3	GL01	A
G22	DALI DIM		DB-G - L3	S15	A
G23	DALI DIM		DB-G - L3	S14	A
G24	DALI DIM	AMENITY	DB-G - L4	S5	A
G25	DALI DIM	BAR	DB-G - L4	S7	A
G26	DALI DIM	BAR	DB-G - L4	S8	A
G27	DALI DIM	BAR	DB-G - L4	S9	A
G28	DALI DIM	OFFICE	DB-G - L4	S10	A
G29	DALI DIM		DB-G - L4	S17	A
G30	DALI DIM		DB-G - L4	S16	A
G31					A
G32					A
CONTROL MODULE 10					A
TYPE:		DYNALITE DDBC1200			A
DESCRIPTION		12CH BOARD CAST DALI CONTROLLER			A
LOCATION		DIN RAIL MOUNTED WITHIN DB-G			A
BUS:		A			A
CHANNEL	CONTROL	DESCRIPTION			A
		LOCATION	CIRCUITS	USE	A
G33	DALI DIM		DB-G - L5	RD01	A
G34	DALI DIM		DB-G - L5	RD01	A
G35	DALI DIM		DB-G - L5	S2	A
G36	DALI DIM		DB-G - L5	RD01	A
G37	DALI DIM		DB-G - L5	S2	A
G38	DALI DIM		DB-G - L5	S1	A
G39	DALI DIM	BAR	DB-G - L6	SP01	A
G40	DALI DIM		DB-G - L6	RD01	A
G41	DALI DIM	AMENITY	DB-G - L6	RD03	A
G42	DALI DIM	BAR	DB-G - L6	RD02	A
G43	DALI DIM	BAR	DB-G - L6	RD01	A
G44					A



ELECTRICAL DESIGN GROUP

ELECTRICAL BUILDING SERVICES CONSULTANTS

P.O. Box 15, SHERWOOD Q. 4075

Phone: (07) 3278 4375 Fax: (07) 3716 0222

Web Site: www.edg.net.au Email: brisbane@edg.net.au

C3470a - GOLDEN BEACH TAVERN, CALOUNDRA

C3470a-0004(A).xls

LIGHTING CONTROL SCHEDULE

REVISION A - 06 AUGUST 2025

CONTROL MODULE 11					A
TYPE:		DYNALITE DDBC1200			A
DESCRIPTION		12CH BOARD CAST DALI CONTROLLER			A
LOCATION		DIN RAIL MOUNTED WITHIN DB-G			A
BUS:		A			A
CHANNEL	CONTROL	DESCRIPTION			A
		LOCATION	CIRCUITS	USE	A
G45	DALI DIM		DB-G - L7	RD01	A
G46	DALI DIM		DB-G - L7	S2	A
G47					A
G48					A
G49					A
G50					A
G51					A
G52					A
G53					A
G54					A
G55					A
G56					A



ELECTRICAL DESIGN GROUP

ELECTRICAL BUILDING SERVICES CONSULTANTS

P.O. Box 15, SHERWOOD Q. 4075

Phone: (07) 3278 4375

Website: www.edg.net.au Email: brisbane@edg.net.au

C3470a - GOLDEN BEACH TAVERN, CALOUNDRA

C3470a-0005(A).xls

DISTRIBUTION BOARD DB-E

REVISION A - 06 AUGUST 2025

							REV
FAULT CURRENT:		6KA	MAIN SWITCH:		250 NON AUTO LOAD BREAK		A
CHASSIS SIZE:		60 POLE	SUPPLIED FROM:		MSB		A
CHASSIS RATING:		250A	SUPPLY CABLE:		4C+E 70		A
PHASES:		3					A
REFER TO THE EQUIPMENT SCHEDULE AND NOTES FOR ADDITIONAL REQUIREMENTS. PROVIDE THE DB WITH A FULL WIDTH EMPTY DIN RAIL TO ACCOMMODATE FUTURE CONTACTORS AND CONTROLS IN ADDITION TO THE CONTROLS INCLUDING THE DYNALITE EQUIPMENT PROVIDED AS PART OF THE INITIAL WORKS. PROVIDE THE DB WITH AN AS2293 EMERGENCY LIGHTING CONTROL SYSTEM TO CONTROL THE ASSOCIATED EMERGENCY LIGHTS. PROVIDE THE DB WITH SURGE PROTECTION. ENSURE THE SCHEDULE INCLUDES THE CIRCUIT USE AND LOCATION.							A
CIRC	PH	CIRCUIT BREAKER (amps)	CONTROL EQUIPMENT	CABLE SIZE (mm ²)	LOCATION	CIRCUIT USE	
P1	1	20	RCBO	2.5	SPORTS BAR	POS	A
P2	1	20	RCBO	2.5	SPORTS BAR	REFRIGERATOR	A
P3	1	20	RCBO	2.5	SPORTS BAR	GPOS	A
P4	1	20	RCBO	2.5	SPORTS BAR	REFRIGERATOR	A
P5	1	20	RCBO	2.5	SPORTS BAR	REFRIGERATOR	A
P6	1	20	RCBO	2.5	SPORTS BAR	GLASS WASHER	A
P7	1	20	RCBO	2.5	SPORTS BAR	GLASS WASHER	A
P8	1	20	RCBO	2.5	SPORTS BAR	REFRIGERATOR	A
P9	1	20	RCBO	2.5	SPORTS BAR	TV	A
P10	1	20	RCBO	2.5	SPORTS BAR	TAB	A
P11	1	20	RCBO	2.5	SPORTS BAR	TAB	A
P12	1	20	RCBO	2.5	SPORTS BAR	REFRIGERATOR	A
P13	1	20	RCBO	2.5	SPORTS BAR	KENO	A
P14	1	20	RCBO	2.5	SPORTS BAR	CLEANING	A
P15	1	20	RCBO	2.5	SPORTS BAR	TV	A
P16	1	20	RCBO	2.5	SPORTS BAR	TV	A
L1	1	20	RCBO	2.5	EXTERNAL	LIGHTING	A
L2	1	20	RCBO	2.5	SPORTS BAR	LIGHTING	A
L3	1	20	RCBO	2.5	SPORTS BAR	LIGHTING	A
L4	1	20	RCBO	2.5	SPORTS BAR	LIGHTING	A
L5	1	20	RCBO	2.5	SPORTS BAR	LIGHTING	A
L6	1	20	RCBO	2.5	SPORTS BAR	LIGHTING	A
L7	1	20	RCBO	2.5	SPORTS BAR	LIGHTING	A
L8	1	20	RCBO	2.5	SPORTS BAR	LIGHTING	A
L9	1	20	RCBO	2.5	SPORTS BAR	LIGHTING	A
L10	1	20	RCBO	2.5	SPORTS BAR	LIGHTING	A
L11	1	20	RCBO	2.5	EXTERNAL	FANS	A



ELECTRICAL DESIGN GROUP

ELECTRICAL BUILDING SERVICES CONSULTANTS

P.O. Box 15, SHERWOOD Q. 4075

Phone: (07) 3278 4375

Website: www.edg.net.au Email: brisbane@edg.net.au

C3470a - GOLDEN BEACH TAVERN, CALOUNDRA

C3470a-0006(A).xls

DISTRIBUTION BOARD DB-G

REVISION A - 06 AUGUST 2025

							REV
FAULT CURRENT:		6KA		MAIN SWITCH:		250 NON AUTO LOAD BREAK	A
CHASSIS SIZE:		72 POLE		SUPPLIED FROM:		MSB	A
CHASSIS RATING:		250A		SUPPLY CABLE:		4C+E 70	A
PHASES:		3					A
REFER TO THE EQUIPMENT SCHEDULE AND NOTES FOR ADDITIONAL REQUIREMENTS. PROVIDE THE DB WITH A FULL WIDTH EMPTY DIN RAIL TO ACCOMMODATE FUTURE CONTACTORS AND CONTROLS IN ADDITION TO THE CONTROLS INCLUDING THE DYNALITE EQUIPMENT PROVIDED AS PART OF THE INITIAL WORKS. PROVIDE THE DB WITH AN AS2293 EMERGENCY LIGHTING CONTROL SYSTEM TO CONTROL THE ASSOCIATED EMERGENCY LIGHTS. PROVIDE THE DB WITH SURGE PROTECTION. ENSURE THE SCHEDULE INCLUDES THE CIRCUIT USE AND LOCATION.							A
CIRC	PH	CIRCUIT BREAKER (amps)	CONTROL EQUIPMENT	CABLE SIZE (mm ²)	LOCATION	CIRCUIT USE	
P1	1	20	RCBO	2.5	GAMING	GAMING MACHINES	A
P2	1	20	RCBO	2.5	GAMING	GAMING MACHINES	A
P3	1	20	RCBO	2.5	GAMING	GAMING MACHINES	A
P4	1	20	RCBO	2.5	GAMING	GAMING MACHINES	A
P5	1	20	RCBO	2.5	GAMING	GAMING MACHINES	A
P6	1	20	RCBO	2.5	GAMING	GAMING MACHINES	A
P7	1	20	RCBO	2.5	GAMING	GAMING MACHINES	A
P8	1	20	RCBO	2.5	GAMING	GAMING MACHINES	A
P9	1	20	RCBO	2.5	GAMING	GAMING MACHINES	A
P10	1	20	RCBO	2.5	GAMING	MODEM	A
P11	1	20	RCBO	2.5	GAMING	CRT	A
P12	1	20	RCBO	2.5	GAMING	CLEANING	A
P13	1	20	RCBO	2.5	GAMING	AUTO DOORS	A
P14	1	20	RCBO	2.5	GAMING	AUTO DOORS	A
P15	1	20	RCBO	2.5	GAMING	SIGN	A
P16	1	20	RCBO	2.5	GAMING	SIGN	A
P17	1	20	RCBO	2.5	GAMING	SIGN	A
P18	1	20	RCBO	2.5	GAMING	SIGN	A
P19	1	20	RCBO	2.5	GAMING	SIGN	A
P20	1	20	RCBO	2.5	BAR	AB GPOS	A
P21	1	20	RCBO	2.5	BAR	GAMING CONTROL	A
P22	1	20	RCBO	2.5	BAR	REFRIGERATOR	A
P23	1	20	RCBO	2.5	BAR	COFFEE	A
P24	1	20	RCBO	2.5	BAR	REFRIGERATOR	A
P25	1	20	RCBO	2.5	BAR	GLASS WASHER	A
P26	1	20	RCBO	2.5	OFFICE	GPOS	A
P27	1	20	RCBO	2.5	OFFICE	RACKS	A
P28	1	20	RCBO	2.5	OFFICE	RACKS	A
P29	1	20	RCBO	2.5	OFFICE	RACKS	A
P30	1	20	RCBO	2.5	OFFICE	RACKS	A
P31	1	20	RCBO	2.5	OFFICE	RACKS	A
P32	1	20	RCBO	2.5	OFFICE	RACKS	A
P33	1	20	RCBO	2.5	OFFICE	CASH COUNTING	A
P34	1	20	RCBO	2.5	OFFICE	POS	A
P35	1	20	RCBO	2.5	BAR	SAFE	A
P36	1	20	RCBO	2.5	GAMING	TV	A



ELECTRICAL DESIGN GROUP

ELECTRICAL BUILDING SERVICES CONSULTANTS

P.O. Box 15, SHERWOOD Q. 4075

Phone: (07) 3278 4375

Website: www.edg.net.au Email: brisbane@edg.net.au

C3470a - GOLDEN BEACH TAVERN, CALOUNDRA

C3470a-0006(A).xls

DISTRIBUTION BOARD DB-G

REVISION A - 06 AUGUST 2025

<div>FAULT CURRENT: 6KA</div> <div>CHASSIS SIZE: 72 POLE</div> <div>CHASSIS RATING: 250A</div> <div>PHASES: 3</div> <div>MAIN SWITCH: 250 NON AUTO LOAD BREAK</div> <div>SUPPLIED FROM: MSB</div> <div>SUPPLY CABLE: 4C+E 70</div>							REV
							A
							A
							A
							A
REFER TO THE EQUIPMENT SCHEDULE AND NOTES FOR ADDITIONAL REQUIREMENTS. PROVIDE THE DB WITH A FULL WIDTH EMPTY DIN RAIL TO ACCOMMODATE FUTURE CONTACTORS AND CONTROLS IN ADDITION TO THE CONTROLS INCLUDING THE DYNALITE EQUIPMENT PROVIDED AS PART OF THE INITIAL WORKS. PROVIDE THE DB WITH AN AS2293 EMERGENCY LIGHTING CONTROL SYSTEM TO CONTROL THE ASSOCIATED EMERGENCY LIGHTS. PROVIDE THE DB WITH SURGE PROTECTION. ENSURE THE SCHEDULE INCLUDES THE CIRCUIT USE AND LOCATION.							A
CIRC	PH	CIRCUIT BREAKER (amps)	CONTROL EQUIPMENT	CABLE SIZE (mm ²)	LOCATION	CIRCUIT USE	
L1	1	20	RCBO	2.5	GAMING	SIGN	A
L2	1	20	RCBO	2.5	GAMING	LIGHTS	A
L3	1	20	RCBO	2.5	GAMING	LIGHTS	A
L4	1	20	RCBO	2.5	GAMING	LIGHTS	A
L5	1	20	RCBO	2.5	GAMING	LIGHTS	A
L6	1	20	RCBO	2.5	GAMING	LIGHTS	A
L7	1	20	RCBO	2.5	GAMING	LIGHTS	A
L8	1	20	RCBO	2.5	DOSA	FAN	A
L9	1	20	RCBO	2.5	DOSA	HEATER	A
L10	1	20	RCBO	2.5	DOSA	HEATER	A
L11	1	20	RCBO	2.5	DOSA	HEATER	A

LEGEND

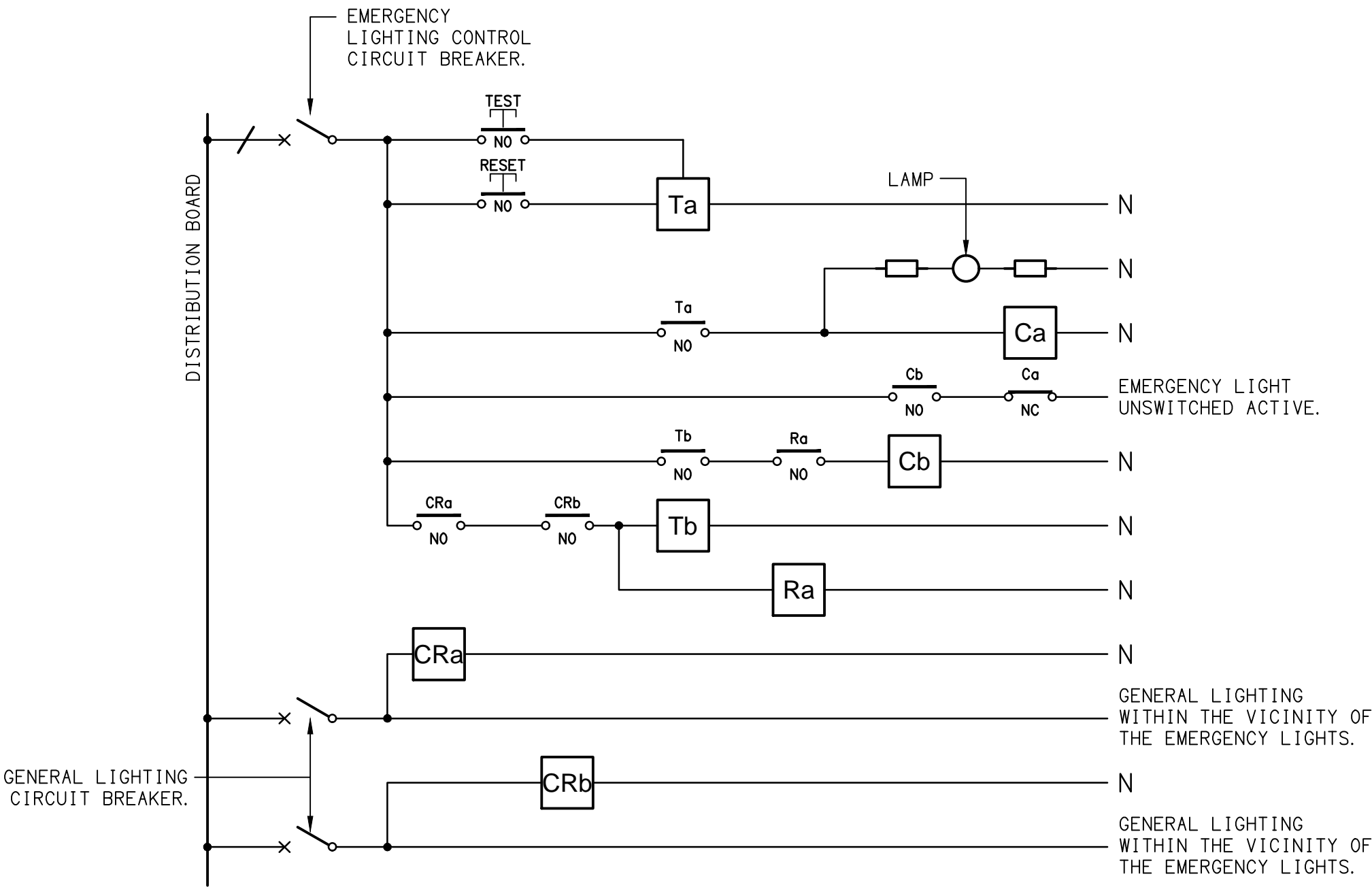
	ELECTRICAL SERVICES SWITCHBOARD.
	SWITCHBOARD / CONTROL PANEL NOT PROVIDED AS PART OF THE ELECTRICAL SUBCONTRACT.
	SINGLE POWER OUTLET.
	DOUBLE POWER OUTLET.
	DOUBLE POWER OUTLET C/W INTEGRAL USB OUTLET.
	GAMING / TAB OUTLET BY GAMING ELECTRICIAN.
	SIGNAGE CONNECTION.
	SINGLE PHASE ISOLATOR.
	THREE PHASE ISOLATOR.
	CONDUIT ROUTE.
	LIGHTING CONTROL SWITCHPANEL, TYPE x.
	ONE-WAY LIGHT SWITCH.
	TWO-WAY LIGHT SWITCH.
	CIRCUIT LINE.
	SWITCH LINE.
	POWER CIRCUIT DESIGNATION. DENOTES DB AND CIRCUIT.
	LIGHTING CONTROL CHANNEL REFERENCE.
	ELECTRICAL EQUIPMENT AS NOTED.
	REFER TO DETAIL NOTED FOR THE AREA SHOWN HATCHED. ADDITIONAL OUTLETS & FITTINGS MAY BE SHOWN ON DETAIL.
	M1: EXISTING SUPPLY AUTHORITY METER.
	M2: EXISTING MAXIMUM DEMAND INDICATOR.
	M3: SUPPLY AUTHORITY NEM CODE COMPLIANT TARIFF METER.
	M4: MULTI-FUNCTION LOGGING METER.
	Sx: LED JOINERY / CEILING STRIP LIGHT, TYPE AS NOTED.
	E1: GENERAL RECESSED LED EMERGENCY LIGHT, WHITE.
	E2: GENERAL SURFACE LED EMERGENCY LIGHT, WHITE.
	EX: EMERGENCY LED EXIT LIGHT, WHITE UNLESS NOTED AS BLACK.
	PD01: DECORATIVE SUSPENDED PENDANT LIGHT, TAN.
	PD02: DECORATIVE SUSPENDED PENDANT LIGHT, GYPSUM.
	PD03: DECORATIVE SUSPENDED PENDANT LIGHT, RAFFIA.
	PD04: DECORATIVE SUSPENDED PENDANT LIGHT, BRASS.
	PD05: DECORATIVE SUSPENDED PENDANT LIGHT.
	SP01: SURFACE PENDANT.
	TL01: BISTRO SUSPENDED TRACK LIGHTS, WHITE.
	TL02: SPORTS BAR SUSPENDED TRACK LIGHTS, BLACK.
	WL01: WALL LIGHT, BRASS.
	WL02: WALL LIGHT, BRASS.
	WL03: WALL LIGHT, BRASS.
	WL04: WALL LIGHT, BLACK.
	WL05: WALL LIGHT, BLACK.
	WL06: WALL LIGHT, BRASS.
	WLE: EXISTING WALL LIGHT TO BE RETAINED.

LEGEND

	RD01: RECESSED DOWNLIGHT, WHITE.
	RD02: RECESSED ADJUSTABLE DOWNLIGHT, WHITE.
	RD03: RECESSED ADJUSTABLE DOWNLIGHT, WHITE.
	RD04: RECESSED DOWNLIGHT, WHITE.
	L1: 600 x 600 RECESSED FLAT PANEL.
	UL01: INGROUND UPLIGHT.
	FS01: FESTOON LIGHTING FIXED TO STAINLESS STEEL SUPPORT, BLACK.
	GL01: GARDEN SPIKE LIGHT.
	F01: CEILING FAN, BLACK.
	FC1: CEILING FAN CONTROLLER TYPE 1.
	HRE: EXISTING HEATER TO BE RETAINED.
	HL01: SERVERY PASS OUT HEAT LAMP.

EQUIPMENT:

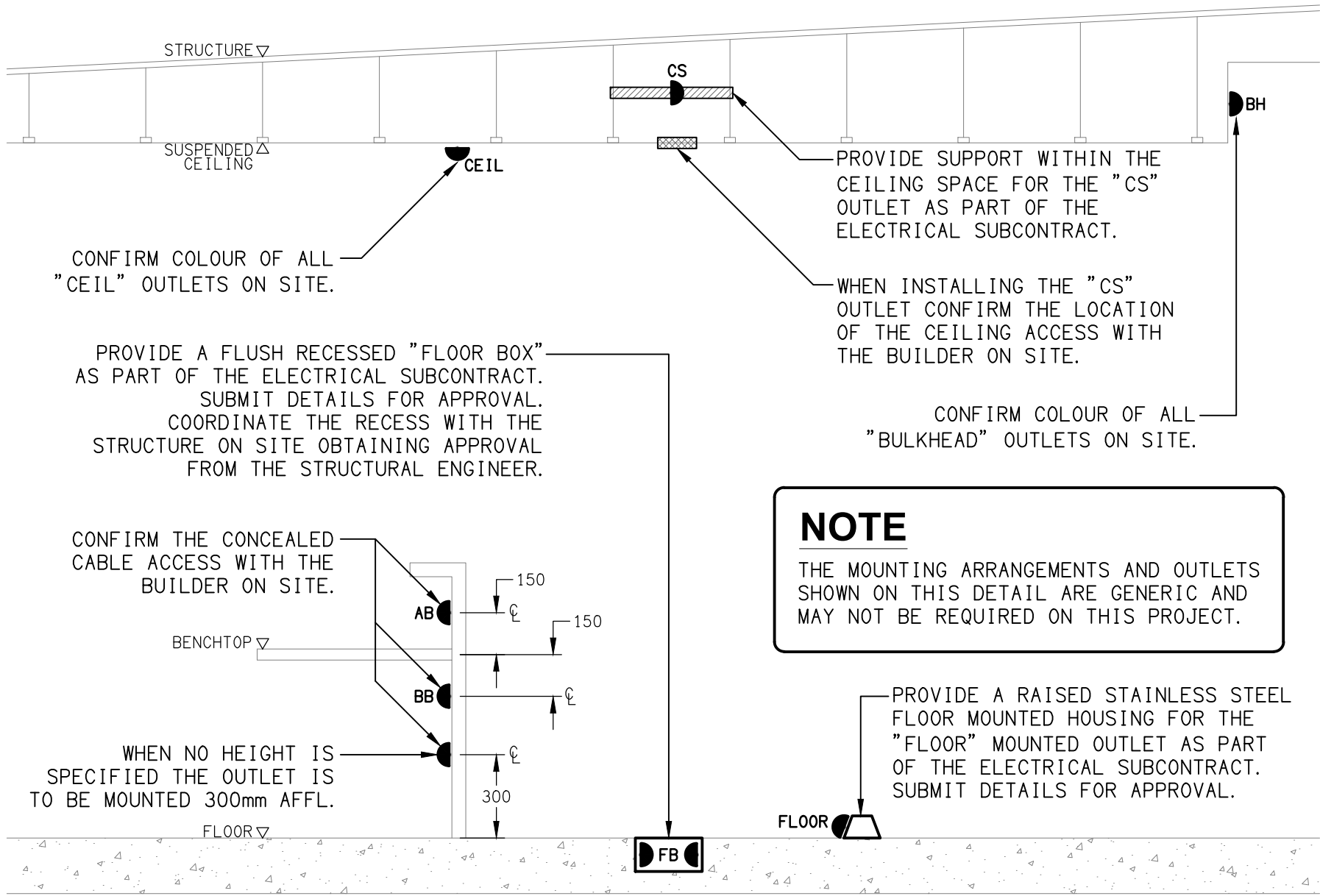
- TEST – TEST PUSH BUTTON MOUNTED ON THE DISTRIBUTION BOARD ESCUTCHEON.
- RESET – RESET PUSH BUTTON MOUNTED ON THE DISTRIBUTION BOARD ESCUTCHEON.
- LAMP – AMBER TEST INDICATING LAMP MOUNTED ON THE DISTRIBUTION BOARD ESCUTCHEON.
- Ta – ADJUSTABLE 0-3 HOUR TIMED RELAY.
- Tb – 15 MINUTE RUN-ON TIMER TO OPERATE UPON THE RETURN OF MAINS POWER.
- Cx – CONTACTOR x.
- CRx – CONTROL RELAY x.
- Rx – RELAY x.



NOTES

1. THE EMERGENCY LIGHT UNSWITCHED ACTIVE / GENERAL LIGHTING SWITCHED ACTIVE CIRCUIT ARRANGEMENT AND CONTROL IS TYPICAL FOR ALL CIRCUITS SUPPLYING EMERGENCY LIGHTS.
2. PROVIDE ADDITIONAL CONTROL RELAYS (CRx) CONFIGURED AS PER CRa AND CRb FOR ALL ADDITIONAL LIGHTING CIRCUITS THAT SUPPLY LIGHTS IN THE VICINITY OF THE EMERGENCY LIGHTS.

SCHEMATIC
EMERGENCY LIGHTING
NOT TO SCALE



DETAIL
TYPICAL OUTLET MOUNTINGS
NOT TO SCALE

THE COPYRIGHT OF THIS DRAWING REMAINS THE PROPERTY OF THE ELECTRICAL DESIGN GROUP.

USE FIGURED DIMENSIONS IN PREFERENCE TO SCALE.

ALL DIMENSIONS TO BE VERIFIED ONSITE.

B	TENDER	06/08/2025
REV:	DESCRIPTION:	DATE:

ELECTRICAL DESIGN GROUP
ELECTRICAL BUILDING SERVICES CONSULTANTS

BRISBANE: P.O. Box 15 Sherwood Qld 4075
Phone: (07) 3278 4375
Email: brisbane@edg.net.au
Web: www.edg.net.au

ELECTRICAL DESIGN GROUP BRISBANE PTY LTD
ACN 092 710 793

TRADING AS:
ELECTRICAL DESIGN GROUP

PROJECT:

GOLDEN BEACH TAVERN
CALOUNDRA

SITE ADDRESS:
32 BOWMAN ROAD, CALOUNDRA
QUEENSLAND

SCALE: SHEET SIZE:

NOT TO SCALE AT A1

DRAWING TITLE:

ELECTRICAL SERVICES
LEGEND & DETAILS

PROJECT NO: DRAWING NO: REVISION:

C3470a E01 B

NOTES

1. EXTENT OF WORKS

THE ELECTRICAL SERVICES SUB-CONTRACT INCLUDES BUT IS NOT LIMITED TO THE FOLLOWING:
- SUPPLY AND INSTALLATION OF ALL COMPONENTS FORMING PART OF THE ELECTRICAL SERVICES.
- INSPECTIONS.
- TESTING AND COMMISSIONING.
- MAINTENANCE.
- CABLING, CABLE SUPPORT SYSTEMS AND ACCESS.
- POWER DISTRIBUTION.
- LIGHTING.
- MODIFICATION, RELOCATION AND EXTENSION AS NECESSARY OF ALL EXISTING SERVICES THAT ARE IMPACTED BY THE WORKS OR REQUIRED TO BE EXTENDED BY THE WORKS.
- REMOVAL OF ALL EXISTING SERVICES MADE REDUNDANT BY THE WORKS.
- DOCUMENTS.
- ANY TEMPORARY WORKS REQUIRED TO KEEP THE HOTEL OPERATING DURING THE CONSTRUCTION PROCESS AND ACCOMMODATE STAGING OF THE WORKS TO REFLECT THE EXECUTION OF THE MAIN CONTRACT WORKS.
- ALL MINOR COMPONENTS AND INCIDENTAL WORKS NOT SPECIFICALLY REFERRED TO, HOWEVER NECESSARY TO COMPLETE THE ELECTRICAL SERVICES INSTALLATION SUCH THAT IT IS HANDED OVER COMPLETE, OPERATIONAL AND FIT FOR THE INTENDED USE.

PRIOR TO COMMENCING WORK CONSULT SITE MANAGEMENT FOR ANY HAZARDOUS MATERIAL AND OR ASBESTOS REGISTERS AS WELL AS UNDERTAKE A THOROUGH INSPECTION OF THE SITE TO IDENTIFY ANY POTENTIAL HAZARDOUS MATERIALS, ASBESTOS AND HEALTH OR SAFETY RISKS. ADVISE THE CONTRACTOR OF ANY POTENTIAL HAZARDOUS MATERIALS ASBESTOS AND HEALTH OR SAFETY RISKS IF IDENTIFIED AND DO NOT COMMENCE WORK UNTIL AN APPROPRIATE MANAGEMENT PLAN HAS BEEN DEVELOPED AND AGREED TO BY ALL PARTIES.

SUPPLY ALL LABOUR, MATERIALS, EQUIPMENT, AND ALL OTHER ITEMS, WHETHER MENTIONED IN DETAIL OR NOT, REQUIRED FOR THE SATISFACTORY COMPLETION OF THE ELECTRICAL SERVICES INSTALLATION, LEAVING IN FULL WORKING ORDER TO THE SATISFACTION OF THE PROJECT MANAGER.

ACCEPT FULL RESPONSIBILITY FOR LIASING, ARRANGING AND CO-ORDINATION OF ALL WORKS THAT HAVE AN EFFECT ON OR WILL BE AFFECTED BY THE ELECTRICAL SERVICES.

REFER TO THE EQUIPMENT SCHEDULE FOR ADDITIONAL REQUIREMENTS.

2. WORKMANSHIP

ENSURE THAT THE ELECTRICAL WORK IS PERFORMED BY THE HOLDER OF A CURRENT ELECTRICAL SUB CONTRACTOR LICENSE AND THE SERVICES COVERED BY THE ACMA IS PERFORMED BY THE HOLDER OF THE APPROPRIATE CURRENT ACMA LICENSE. ENSURE THE INSTALLATION AND ALL COMPONENTS, FIXTURES, FITTINGS, OUTLETS AND CABLES ARE SUPPLIED AND INSTALLED TO A HIGH STANDARD THROUGHOUT, AND INSTALLED IN A NEAT AND TRADESMAN LIKE MANNER, TO THE CURRENT INDUSTRY STANDARDS. ENSURE ALL MATERIALS AND COMPONENTS OF A SIMILAR TYPE ARE OF THE SAME MANUFACTURER AND INSTALLED IN A UNIFORM MANNER.

IT IS THE ELECTRICAL SUB CONTRACTOR'S RESPONSIBILITY TO ENSURE THAT THE INSTALLATION IS FIT FOR PURPOSE AND IS PROVIDED AS A COMPLETE WORKING INSTALLATION. IT IS THE ELECTRICAL SUB CONTRACTOR'S RESPONSIBILITY TO PROVIDE ALL COMPONENTS, FITTINGS, FIXTURES, SYSTEMS, PROGRAMMING ETC IRRESPECTIVE OF THE LEVEL DETAILED IN THE DOCUMENTS SUCH THAT THE INSTALLATION IS PROVIDED AS A COMPLETE WORKING INSTALLATION.

CONCEAL ALL WIRING AND CONDUITS. EXPOSED CABLING OR CONDUITS ARE GENERALLY NOT ACCEPTABLE. IT IS NOTED THAT CHASING AND REINSTATEMENT WILL BE REQUIRED. ENSURE ALL COMPONENTS, EQUIPMENT AND MATERIALS SUPPLIED ARE NEW, UNUSED, DESIGNED AND SELECTED TO ENSURE SATISFACTORY OPERATION UNDER VARYING ATMOSPHERIC, CLIMATIC, HUMID TROPICAL CONDITIONS WITHOUT DISTORTION AND DETERIORATION IN ANY PART AFFECTING EFFICIENCY AND RELIABILITY OF THE SYSTEMS. DESIGN AND SELECT ALL EQUIPMENT TO PROVIDE THE NECESSARY SAFETY TO HUMAN LIFE AND PROPERTY DURING OPERATION AND MAINTENANCE WITH PARTICULAR ATTENTION GIVEN TO ELECTRICAL SAFETY AND SEGREGATION PRECAUTIONS.

CHECK THE FINISHED PAINTWORK AROUND THE AREA OF EACH INSTALLATION AND TOUCH UP ALL DAMAGED PARTS AND FINISHES AFTER THE INSTALLATION OF THE ELECTRICAL SERVICES.

ALL WORKS ARE TO BE CARRIED OUT IN ACCORDANCE WITH THE BUILDER'S PROGRAM. ENSURE ALL FINAL LOCATIONS OF OUTLETS AND FITTINGS ARE CO-ORDINATED ONSITE WITH THE ARCHITECT AND ALL OTHER SERVICES, TO THE APPROVAL OF THE PROJECT MANAGER. ALLOW TO CO-ORDINATE THE FINAL LOCATION OF ALL EQUIPMENT, FITTINGS, & OUTLETS, SUCH THAT THEY ARE INSTALLED IN ACCORDANCE WITH THE AS3000 RESTRICTED ZONES, AND ARE NOT COVERED INAPPROPRIATELY.

ENSURE THAT ALL METAL SURFACES ARE SUITABLY PROTECTED AGAINST CORROSION, AND THAT ALL PLASTIC MATERIALS ARE UV STABILISED.

PROVIDE ALL MATERIALS AS NEW, AND OF THE HIGHEST CLASS AVAILABLE FOR THEIR RESPECTIVE TYPES. ENSURE ALL ASPECTS OF THE WORK ARE OF A HIGH STANDARD THROUGHOUT, AND INSTALLED IN A NEAT AND TRADESMAN LIKE MANNER, TO THE CURRENT INDUSTRY STANDARDS.

MODIFICATION, RELOCATION AND EXTENSION AS NECESSARY OF ALL EXISTING SERVICES THAT ARE IMPACTED BY THE WORKS OR REQUIRED TO BE EXTENDED BY THE WORKS.

PROVIDE ALL TEMPORARY WORKS REQUIRED TO KEEP THE VENUE AND ALL CONSTRUCTION STAGES OPERATING INCLUDING STAGED COMMISSIONING DURING THE CONSTRUCTION PROCESS.

ALL MINOR COMPONENTS AND INCIDENTAL WORKS NOT SPECIFICALLY REFERRED TO, HOWEVER NECESSARY TO COMPLETE THE ELECTRICAL SERVICES INSTALLATION SUCH THAT IT IS HANDED OVER COMPLETE, OPERATIONAL AND FIT FOR THE INTENDED USE.

CORRUGATED CONDUITS MUST NOT BE USED WITHIN ANY FOOD OR DRINK PREPARATION OR SERVERY AREAS.

CABLE JOINS ARE NOT ACCEPTABLE. ALL CABLING, WIRING, CONDUCTORS AND CONDUITS MUST BE CONCEALED. ALL EXISTING ELECTRICAL SERVICES INCLUDING CABLING AND SWITCHGEAR THAT IS FOUND TO BE REDUNDANT OR MADE REDUNDANT BY THE WORKS MUST BE REMOVED.

IT IS ACCEPTABLE TO USE EXISTING SWITCHGEAR, OUTLETS AND CABLING IF THEY ARE APPROPRIATELY RATED AND THE ELECTRICIAN ACCEPTS RESPONSIBILITY OVER THE SWITCHGEAR / OUTLETS / CABLE AND PROVIDES A WARRANTY OVER IT AS IF IT WAS INSTALLED NEW BY THE ELECTRICIAN.

3. STANDARDS

IRRESPECTIVE OF INFORMATION CONTAINED IN THE ELECTRICAL SERVICES DOCUMENTS OR IN INSTRUCTIONS, IT IS THE ELECTRICAL SUB CONTRACTORS RESPONSIBILITY TO ENSURE ALL ELECTRICAL SERVICES WORKS ARE INSTALLED IN ACCORDANCE WITH THE REQUIREMENTS OF THE FOLLOWING. REFER ANY DISCREPANCIES BETWEEN THE REQUIREMENTS OF THE FOLLOWING AND/OR THE ELECTRICAL SERVICES DOCUMENTS AND INSTRUCTIONS TO THE ARCHITECT FOR CLARIFICATION PRIOR TO THE PLACING OF ORDERS, FABRICATION OR INSTALLATION OF THE ITEMS/METHODS IN DISCREPANCY.
- NCC BUILDING CODE OF AUSTRALIA.
- ELECTRICITY ACT.
- ELECTRICAL SAFETY ACT.
- AS/NZS3000.
- AS3008.
- WORKPLACE HEALTH AND SAFETY ACT.
- TELECOMMUNICATIONS ACT.
- ACMA REQUIREMENTS.

NOTES

4. AUTHORITIES

ENSURE ALL OF THE ELECTRICAL SERVICES COMPLY WITH THE REQUIREMENTS OF ALL REGULATORY AUTHORITIES HAVING JURISDICTION OVER THE SITE INCLUDING BUT NOT LIMITED TO THE FOLLOWING:
- ACMA.
- LOCAL COUNCIL.
- LOCAL SUPPLY AUTHORITY.
- STATE GOVERNMENT DEPARTMENT OF ENVIRONMENT AND HERITAGE.
- QLD GOVERNMENT, DIVISION OF WORKPLACE, HEALTH AND SAFETY.
- QLD FIRE AND EMERGENCY SERVICES.

5. CABLES

UNLESS OTHERWISE SPECIFIED, INSTALL AND TERMINATE CABLES IN ACCORDANCE WITH THE MANUFACTURERS' RECOMMENDATIONS. DETERMINE THE FINAL ROUTES TO SUIT THE BUILDING STRUCTURE AND SITE CONDITIONS. UNLESS NOTED OTHERWISE, PROVIDE ALL 240 VOLT POWER AND LIGHTING WIRING AS 2.5mm² TWIN & EARTH STRANDED COPPER CONDUCTORS, PVC INSULATED 0.6/1kV V75 GRADE TO AS3174, PROTECTED BY A 20 AMP CIRCUIT BREAKER. ALL CONDUIT AND FITTINGS TO BE RIGID UPVC TO AS2053, UNLESS NOTED OTHERWISE.

6. POWER DISTRIBUTION

REPLACE THE EXISTING MAIN SWITCHBOARD. PROVIDE NEW DISTRIBUTION BOARDS DB-E AND DB-G WITH NEW SUBMAINS FROM THE NEW MSB. THE EXISTING DYNALITE LIGHTING CONTROL SYSTEM LOCATED WITHIN THE CEILING SPACE IS TO BE RELOCATED INTO AN AS3000 COMPLIANT POSITION AND BE INTERFACED TO THE NEW DYNALITE CONTROL SYSTEM.

THE EXISTING MECHANICAL SERVICES CIRCUITS ARE TO BE RETAINED.

ALL OF THE EXISTING SWITCHBOARDS, CIRCUITS, CABLING AND OUTLETS THAT BECOME REDUNDANT ARE TO BE REMOVED. THE EXISTING CIRCUITS THAT REMAIN WITHIN THE AREA OF WORKS ARE TO BE RECONNECTED TO THE SWITCHBOARDS WITH NEW SWITCHGEAR AND CONTROLS. ANY INTERRUPTION TO THE POWER SUPPLY TO ANY SERVICES OUTSIDE OF THE AREA OF WORKS MUST BE RESTRICTED TO OUTSIDE OF THE HOTELS OPERATING HOURS AND MUST BE ADVISED TO THE OPERATOR IN WRITING AT LEAST ONE WEEK PRIOR.

ALL SWITCHBOARDS AND SWITCHGEAR ARE TO BE SCHNEIDER OR NHP AND CONTAIN AT LEAST 25% OR 12 SPARE POLES (WHICHEVER IS THE LARGER) AT PRACTICAL COMPLETION. ALL SWITCHBOARDS ARE TO BE LIGHT GREY. ORANGE SWITCHBOARDS ARE NOT ACCEPTABLE. EXTERNAL SWITCHBOARDS MUST BE 316 STAINLESS STEEL OR ALUMINIUM. PROVIDE 92268 KEY LOCKABLE DOORS ON ALL SWITCHBOARDS. ALL SWITCHBOARDS AND CIRCUITS MUST BE UNIQUELY NAMED WITH SWITCHBOARDS PROVIDED WITH A LABEL CONTAINING:
- SOURCE NAME.
- SOURCE OVERLOAD RATING IN AMPS.
- SUBMAIN CABLE TYPE, SIZE, CONFIGURATION AND LENGTH.

ALL REMOVABLE PANELS AND ESCUTCHEONS MUST BE SECURED VIA 1/4 TURN LATCHES THAT REMAIN PART OF THE PANEL / ESCUTCHEON. IT IS NOT ACCEPTABLE TO SECURE REMOVABLE PANELS AND ESCUTCHEONS BY BOLTS, NUTS OR SCREWS.

ALL CIRCUIT BREAKERS AND CIRCUIT SCHEDULES MUST BE LABELLED / CONTAIN THE SUBMAIN / CIRCUIT USE AND LOCATION SUCH THAT THE CONNECTION / OUTLET CAN BE SIMPLY IDENTIFIED.

OUTLETS ARE TO BE PROVIDED WITH A NEAT HAND WRITTEN CIRCUIT DESIGNATION BY INDELIBLE INK ON THE FACEPLATE SUCH THAT IT IS NOT VISIBLE WHEN THE COVER IS CONCEALED.

THE POWER DISTRIBUTION COMPONENT OF THIS CONTRACT INCLUDES, BUT IS NOT LIMITED TO THE FOLLOWING EXTENT OF WORK:
- POWER DISTRIBUTION.
- REPLACE THE EXISTING MAIN SWITCHBOARD.
- NEW SWITCHBOARDS, SUBMAINS AND CIRCUIT BREAKERS.
- CABLE ACCESS WAYS.
- CIRCUITS.
- ISOLATORS AND OUTLETS.
- TESTING AND COMMISSIONING.
- REMOVAL OF ALL EXISTING REDUNDANT SERVICES.
- RECONNECTION OF ALL EXISTING SERVICES THAT REMAIN.

REFER TO THE DISTRIBUTION BOARD SCHEDULES FOR ADDITIONAL REQUIREMENTS AND CIRCUIT DETAILS.

PROVIDE THE NEW MAIN SWITCHBOARD AS FOLLOWS:

PROVIDE THE SITE MAIN SWITCHBOARD (MSB) AS FOLLOWS:

- PLINTH MOUNTED MECHANICALLY FIXED TO THE EXISTING SUPPORT.
- OEM COMPLIANT RETAIL METERING.
- 92268 KEY LOCKABLE IP66 (316 STAINLESS STEEL OR ALUMINIUM) POWDER COATED COLOURBOND SURF MIST.
- IP56.
- ENSURE THE MSB IS DESIGNED TO OPERATE IN DIRECT SUNLIGHT WITH AN AMBIENT TEMPERATURE OF 40 DEGREES.
- WHITE ESCUTCHEON.
- BOTTOM ENTRY CABLE ACCESS ONLY.
- SUN / RAIN HOOD.
- DOORS ON ALL CUBICLES WITH 3 POINT 92268 KEY LOCKABLE HANDLES OTHER THAN THE METER CUBICAL DOOR WHICH IS TO HAVE AN ENERGEX PADLOCK.
- LIFT OFF HINGES ON ALL DOORS AND ESCUTCHEONS.
- 1/4 TURN LATCHES AND D HANDLES ON ALL ESCUTCHEONS.
- ALL SWITCHGEAR TO BE NHP/TERASAKI.
- PROVIDE SHOP DRAWINGS FOR APPROVAL.
- ENERGEX PADLOCK ON THE METER CUBICAL.
- TWO ENERGEX PADLOCK KEYS AND TWO 92268 KEYS.
- PROVIDE SHOP DRAWINGS FOR APPROVAL.
- OBTAIN APPROVAL FROM ENERGEX OF THE NEW MSB SHOP DRAWINGS.
- PROVIDE A COPY OF THE ENERGEX APPROVAL OF THE MSB.

PROVIDE DISTRIBUTION BOARDS DB-E AND DB-G AS FOLLOWS:
- WALL MOUNTED.
- EACH CUBICAL IS TO HAVE A MINIMUM WIDTH OF 600MM.
- IP44 FORM 1.
- LIGHT GREY ENCLOSURE WHITE ESCUTCHEON.
- 3 POINT LOCKABLE HANDLES ON ALL DOORS.
- LIFT OFF HINGES ON ALL DOORS AND ESCUTCHEONS.
- 1/4 TURN LATCHES AND D HANDLES ON ALL ESCUTCHEONS.
- ALL SWITCHGEAR TO BE SCHNEIDER OR NHP/ TERASAKI.
- PROVIDE SHOP DRAWINGS FOR APPROVAL.
- 25% SPARE POLES AT PRACTICAL COMPLETION.
- ALL COMPONENTS ARE TO BE LABELLED WITH NON-STICK LABELS.

ENSURE ALL THREE PHASE CIRCUITS ARE PROVIDED WITH CORRECT PHASE ROTATION.

ENSURE ALL OUTLETS AND ISOLATORS ARE POSITIONED SUCH THAT THEY ARE NOT COVERED BY THE EQUIPMENT. THE FINAL POSITION OF ALL OUTLETS AND ISOLATORS ARE TO BE CONFIRMED ON SITE BY THE TENANTS REPRESENTATIVE.

NOTES

7. LIGHTING

ALL FRONT OF HOUSE LIGHTING IS TO BE 2,700K OR 3,000K AND THE BACK OF HOUSE LIGHTING IS TO BE 4,000K.

UNLESS A FITTING HAS BEEN SPECIFIED IN THE EQUIPMENT SCHEDULE THAT CONTAINS A MAIN VOLTAGE LAMP, ALL LIGHT FITTINGS MUST BE PROVIDED AS SOLID-STATE LED WITH A FIVE-YEAR MANUFACTURERS REPLACEMENT WARRANTY AND A MINIMUM TWO YEAR MANUFACTURERS REPLACEMENT AND LABOUR WARRANTY.

ALL FRONT OF HOUSE LIGHTS THAT DO NOT CONTAIN A MAIN VOLTAGE LAMP ARE TO BE DALI DIMMABLE.

REMOTE DRIVERS ARE TO BE USED IF POSSIBLE AND LOCATED IN A CONCEALED ACCESSIBLE POSITION, IF THE DRIVER CAN NOT BE REACHED FROM THE FITTING ITS POSITION MUST BE NOTED ON THE AS CONSTRUCTED DOCUMENTS.

ALL FRONT OF HOUSE LIGHTS THAT CONTAIN MAIN VOLTAGE LAMPS ARE TO BE PROVIDED WITH THE LOWEST OUTPUT PRACTICAL TO ACHIEVE THE REQUIRED ILLUMINATION / EFFECT AND BE TRAILING EDGE PHASE DIMMABLE.

ALL ILLUMINATED SIGNAGE, GAMING BASE FOOTREST LEDS, CARPARK LIGHTS, AND EXTERNAL SECURITY LIGHTS NOT CONSIDERED FRONT OF HOUSE ARE TO BE SWITCHED.

ALL LIGHTING CIRCUITS MUST BE PROTECTED BY A 20 AMP RCBO WITH THE AVERAGE NUMBER OF FITTINGS / DRIVERS SUPPLIED FROM A SINGLE CIRCUIT NOT EXCEEDING 25 WITH THE MAXIMUM NOT EXCEEDING 30.

PROVIDE A PHILIPS DYNALITE LIGHTING CONTROL SYSTEM TO CONTROL THE LIGHTING CONFIGURED WITH THE FOLLOWING SCENES:

INTERNAL

- CLEANING - MANUAL OPERATION. 100% LIGHTS ON AND SIGNS OFF.
- DAY - AUTOMATIC OPERATION FROM 10.00 AM TO 3.30 PM.
- AFTERNOON - AUTOMATIC OPERATION FROM 3.30 PM TO DUSK.
- EVENING - AUTOMATIC OPERATION FROM DUSK TO 8.30 PM.
- NIGHT - AUTOMATIC OPERATION FROM 8.30 PM TO CLOSING.
- CLOSED - MANUAL OPERATION. 100% ON FOR 15 MINUTES THEN TO A SECURITY MODE.

EXTERNAL

- DAY - AUTOMATICALLY OFF FROM DAWN TO DUSK.
- NIGHT - AUTOMATICALLY ON FROM DUST UNTIL 15 MINUTES PAST CLOSING.
- CLOSED - MANUAL OPERATION. NIGHT MODE FOR 15 MINUTES THEN TO A SECURITY MODE.

SET THE ILLUMINATION LEVELS IN CONSULTATION WITH THE VENUE MANAGER AND OBTAIN WRITTEN APPROVAL FROM THE VENUE MANAGER OF THEIR ACCEPTANCE OF THE ILLUMINATION SCENE LEVELS FOR EACH STAGED HANDOVER AND SUBMIT A COPY OF THE APPROVAL TO THE ARCHITECT.

PROVIDE PHILIPS DYNALITE PROGRAMMABLE SWITCH PANELS PE SENSORS AND TIME CLOCKS AS NECESSARY. EACH FUNCTIONAL AREA IS TO BE PROVIDED WITH A SWITCHPANEL IN A NON-CUSTOMER ACCESSIBLE POSITION WITH THE ABILITY TO MANUALLY INSTIGATE THE ABOVE SCENES.

DIN RAIL MOUNT THE PHILIPS DYNALITE CONTROL EQUIPMENT WITHIN THE ASSOCIATED SWITCHBOARD.

ALL OF THE LIGHT FITTINGS, LAMPS AND ACCESSORIES ARE TO BE PROVIDED AS PART OF THIS CONTRACT. THE LIGHTING COMPONENT OF THIS CONTRACT INCLUDES, BUT IS NOT LIMITED TO THE FOLLOWING EXTENT OF WORK:

- LIGHTING.
- LIGHT FITTINGS AND ACCESSORIES.
- EMERGENCY AND EXIT LIGHTING.
- EARTHING OF THE LIGHTING INSTALLATION.
- LIGHTING CONTROL.
- PHILIPS DYNALITE LIGHTING CONTROL SYSTEM.
- LIGHTING SUBCIRCUITS.
- TESTING AND COMMISSIONING.
- RECONNECTION OF THE EXISTING LIGHTING THAT REMAINS.
- REMOVAL OF ALL EXISTING REDUNDANT LIGHTING SERVICES INCLUDING THE REDUNDANT LIGHTING CONTROL SYSTEM.

COMMISSION THE LIGHTING CONTROL AT PRACTICAL COMPLETION AND AGAIN THREE TIMES DURING THE DEFECTS AND LIABILITY PERIOD TO THE SATISFACTION OF THE OPERATOR.

DALI TO PHASE DIMMING CONVERTERS ARE NOT ACCEPTABLE.

8. DOCUMENTATION

WITHIN TWO WEEKS OF PRACTICAL COMPLETION PROVIDE THE FOLLOWING DOCUMENTATION.

AS CONSTRUCTED DRAWINGS INCLUDING:
- ELECTRICIANS NAME AND CONTACT DETAILS.
- PROJECT NAME, ADDRESS AND DATE OF PRACTICAL COMPLETION.
- FITTING POSITIONS AND TYPES CROSS REFERENCED TO A FITTING / EQUIPMENT SCHEDULE.
- OUTLET, SWITCH, AND CONNECTION POSITIONS CROSS REFERENCED TO A FITTING / EQUIPMENT SCHEDULE.
- REMOTE DRIVER LOCATIONS.
- CIRCUITS CROSS REFERENCED TO A DISTRIBUTION BOARD SCHEDULE.
- LIGHTING CONTROL CHANNELS CROSS REFERENCED TO A LIGHTING CONTROL SCHEDULE.
- POWER SCHEMATIC.
- SWITCHBOARD SHOP DRAWINGS.
- CABLE ACCESS ROUTES.

A FITTING / EQUIPMENT SCHEDULE INCLUDING:
- FITTING DETAILS INCLUDING THE MANUFACTURERS CATALOGUE NUMBERS WITH THE TYPES CROSS REFERENCED TO THE AS CONSTRUCTED DRAWINGS.
- OUTLETS AND SWITCHES INCLUDING THE MANUFACTURERS CATALOGUE NUMBERS WITH THE TYPES CROSS REFERENCED TO THE AS CONSTRUCTED DRAWINGS.

DISTRIBUTION BOARD SCHEDULES CROSS REFERENCED TO THE AS CONSTRUCTED DRAWINGS.

LIGHTING CONTROL SCHEDULE CROSS REFERENCED TO THE AS CONSTRUCTED DRAWINGS.

PHOTOS OF EACH SWITCHBOARD INCLUDING:
- CLOSED POSITION SUCH THAT THE SWITCHBOARD DESIGNATION AND CLEARANCE IS VISIBLE.
- THE SUBMAIN LABEL.
- DOOR/S OPEN ESCUTCHEON/S CLOSED SUCH THAT THE SPARE CAPACITY AND LABELLING IS VISIBLE.
- DOOR/S OPEN ESCUTCHEON/S REMOVED SUCH THAT THE SWITCHGEAR AND INTERNAL CABLING IS VISIBLE.

NOTES

9. EMERGENCY AND EXIT LIGHTING

PROVIDE A SINGLE POINT EMERGENCY LIGHTING SYSTEM THAT COMPLIES WITH THE LATEST ISSUE OF ALL PARTS AS2293 AND THE RELEVANT PARTS OF THE NCC BCA. INSTALL EMERGENCY LIGHT FITTINGS NOMINATED AS MAINTAINED WITH THE LAMP PERMANENTLY ON SUPPLIED VIA AN UNSWITCHED ACTIVE MAINS SUPPLY WHEN THE MAINS SUPPLY IS AVAILABLE. WHEN THE MAINS SUPPLY IS NOT AVAILABLE, THE LAMP IS TO REMAIN ON SUPPLIED BY THE EMERGENCY PACK. SINGLE LAMP MAINTAINED EMERGENCY LIGHTS ARE NOT SWITCHED WITH THE LOCAL GENERAL AREA LIGHTING. (THE LAMP IS ALWAYS ON.)

INSTALL EMERGENCY LIGHT FITTINGS NOMINATED AS NON-MAINTAINED AS FOLLOWS:

- IF THE FITTING IS NOT BEING SWITCHED, THE LAMP IS TO REMAIN OFF WHEN THE MAINS SUPPLY IS AVAILABLE. WHEN THE MAINS SUPPLY IS NOT AVAILABLE THE LAMP IS TO BE SWITCHED ON SUPPLIED BY THE EMERGENCY PACK. UNSWITCHED SINGLE LAMP NON-MAINTAINED EMERGENCY LIGHTS ARE NOT SWITCHED WITH THE LOCAL GENERAL AREA LIGHTING. (THE LAMP IS ON ONLY WHEN THE MAINS SUPPLY IS NOT AVAILABLE.)
- IF THE FITTING IS BEING SWITCHED, THE LAMP IS TO BE SUPPLIED AND CONTROLLED WITH THE LOCAL GENERAL AREA LIGHTING WHEN THE MAINS SUPPLY IS AVAILABLE. WHEN THE MAINS SUPPLY IS NOT AVAILABLE THE LAMP IS TO BE SWITCHED ON, SUPPLIED BY THE EMERGENCY PACK. (THE LAMP IS ON WHEN TURNED ON WITH THE LOCAL GENERAL LIGHTING OR THE MAIN SUPPLY IS NOT AVAILABLE.)

INSTALL EMERGENCY LIGHTS SUCH THAT THE STATUS INDICATOR L.E.D. IS CLEARLY VISIBLE AND THE TEST BUTTONS ARE READILY ACCESSIBLE. LABEL EACH CIRCUIT BREAKER WHICH CONTROLS THE UNSWITCHED ACTIVE TO EXIT LIGHTS WITH A LABEL FIXED ADJACENT; ENGRAVED PLASTIC LAMINATE, GREEN BACKGROUND WITH WHITE CHARACTERS: -

WARNING
INTERRUPTING SUPPLY WILL DISCHARGE
EMERGENCY LIGHTING BATTERIES

PROVIDE WRITTEN EVIDENCE OF THE INITIAL COMMISSIONING AND TESTING AND TESTING FOR THE DURATION OF THE MAINTENANCE PERIOD IN ACCORDANCE WITH AS 2293.2.

THIS EVIDENCE IS TO BE IN THE FORM OF A LOG BOOK SIMILAR TO THE GENERAL LIGHTING SERVICE PTY LTD "EMERGENCY LIGHTING MAINTENANCE LOG BOOK AND MANUAL" WHICH IS TO BE PROVIDED BY THE ELECTRICAL SUB-CONTRACTOR AND HAVE ALL ENTRIES FULLY COMPLETED AND BE PRESENTED FOR INSPECTION AT PRACTICAL COMPLETION. THE LOG BOOK IS TO BE RETAINED BY THE ELECTRICAL SUB-CONTRACTOR FOR THE DURATION OF THE MAINTENANCE PERIOD, AND THE SIX MONTHLY TEST AND MAINTENANCE RESULTS ENTERED. THE LOG BOOK IS TO BE PRESENTED FOR APPROVAL AT FINAL COMPLETION (EXPIRY OF THE MAINTENANCE PERIOD) AND WILL BE FORWARDED TO THE OPERATOR FOR THEIR USE.

PROVIDE MAINTENANCE OF THE EMERGENCY AND EXIT LIGHTING INSTALLATION INCLUDING RECORDS IN ACCORDANCE WITH THE LATEST ISSUE OF ALL PARTS AS2293 AND THE RELEVANT PARTS OF THE NCC BCA. PROVIDE THE EMERGENCY LIGHTING SYSTEM WITH A SUPPLY SENSING AND TESTING FACILITY IN ACCORDANCE WITH AS 2293.1.

10. GAMING

THE GAMING ELECTRICIAN WILL BE ENGAGED DIRECTLY BY ENDEAVOUR GROUP TO UNDERTAKE THE FOLLOWING:

- COMMUNICATIONS CABLING.
- CIRCUITS FROM GAMING DISTRIBUTION BOARD DB-2 VIA THE LIGHTING CONTROL SYSTEM AS NECESSARY TO:
- GAMING MACHINES.
- GAMING MODEMS.
- GAMING MACHINE SIGNAGE.
- GAMING ROOM CRTS.
- GAMING ROOM CABLE ACCESS EXCLUDING FLOOR CHASES AND REINSTATEMENT OF THE FLOOR CHASES.

THE BUILDING WORKS ELECTRICAL SUB CONTRACT INCLUDES THE DISTRIBUTION BOARD DB-G SWITCHGEAR AS DETAILED IN THE DB-G SCHEDULE AND LIGHTING CONTROL CHANNELS AS DETAILED IN THE LIGHTING CONTROL SCHEDULE FOR THE GAMING ELECTRICIAN TO USE.

ALL OTHER REMAINING ELECTRICAL SERVICES WITHIN THE GAMING ROOM ARE TO BE PROVIDED AS PART OF THE BUILDING WORKS ELECTRICAL SUB CONTRACT.

11. TAB

THE GAMING ELECTRICIAN WILL BE ENGAGED DIRECTLY BY ENDEAVOUR GROUP TO UNDERTAKE THE FOLLOWING:

- COMMUNICATIONS CABLING.
- CIRCUITS FROM DISTRIBUTION BOARD DB-G TO:
- TAB UNITS.
- TAB TELEVISIONS.


THE BUILDING WORKS ELECTRICAL SUB CONTRACT INCLUDES THE DISTRIBUTION BOARD DB-G SWITCHGEAR AS DETAILED IN THE DB-G SCHEDULE FOR THE GAMING ELECTRICIAN TO USE.

ALL OTHER REMAINING ELECTRICAL SERVICES WITHIN THE TAB ROOM ARE TO BE PROVIDED AS PART OF THE BUILDING WORKS ELECTRICAL SUB CONTRACT.

12. ABBREVIATIONS

A - AMP CURRENT RATING
AB - MOUNT ABOVE BENCH.
AFFL - ABOVE FINISHED FLOOR LEVEL.
BB - MOUNT BELOW BENCH.
BH - MOUNT ON BULKHEAD.
CEIL - MOUNT ON CEILING.
CS - MOUNT WITHIN CEILING SPACE.
C/W - COMPLETE WITH.
DW - DISHWASHER.
HP - HOT PLATE.
HWS - HOT WATER SYSTEM.
MCB - MINIATURE CIRCUIT BREAKER.
MSB - MAIN SWITCHBOARD.
MSSB - MECHANICAL SERVICES SWITCHBOARD.
MW - MICROWAVE.
N - NEON / LED INDICATOR WHEN ON.
NTS - NOT TO SCALE.
OV - OVEN.
QDC - QUEENSLAND DEVELOPMENT CODE.
RCBO - CIRCUIT BREAKER C/W AN INTEGRAL 30mA RESIDUAL CURRENT DEVICE.
RCD - CIRCUIT PROTECTED VIA A 30mA RESIDUAL CURRENT DEVICE.
REF - REFRIGERATOR.
UNO - UNLESS NOTED OTHERWISE.
WP - WEATHERPROOF TO IP56 UNO.
500 - NUMBER DENOTES MOUNTING HEIGHT AFFL.

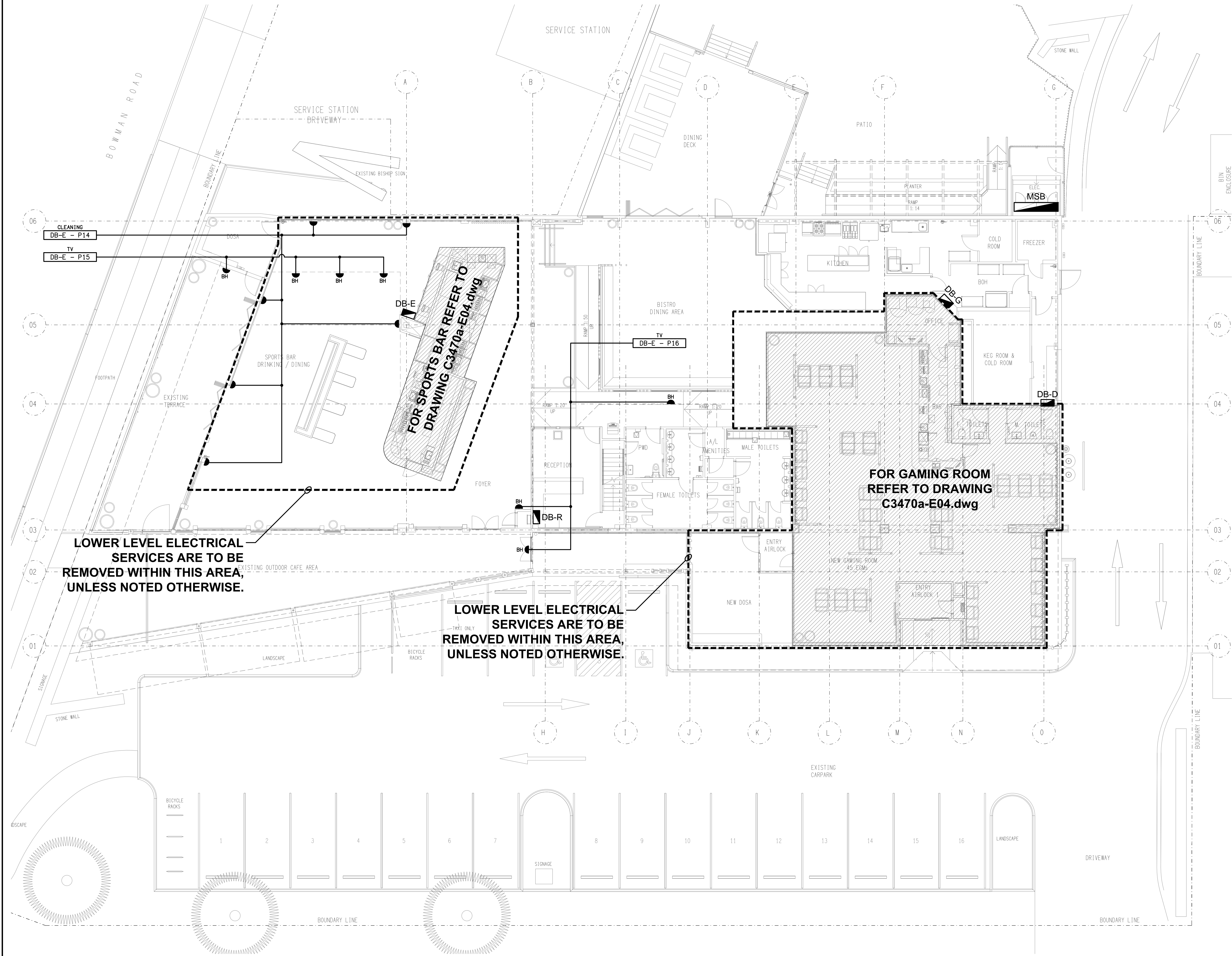
THE COPYRIGHT OF THIS DRAWING REMAINS THE PROPERTY OF THE ELECTRICAL DESIGN GROUP.		
USE FIGURED DIMENSIONS IN PREFERENCE TO SCALE.		
ALL DIMENSIONS TO BE VERIFIED ONSITE.		

 ELECTRICAL DESIGN GROUP ELECTRICAL BUILDING SERVICES CONSULTANTS		
BRISBANE: P.O. Box 15 Sherwood Qld 4075 Phone: (07) 3278 4375 Email: brisbane@edg.net.au Web: www.edg.net.au		
ELECTRICAL DESIGN GROUP BRISBANE PTY LTD ACN 092 710 793		
TRADING AS: ELECTRICAL DESIGN GROUP		
PROJECT: GOLDEN BEACH TAVERN CALOUNDRA 32 BOWMAN ROAD, CALOUNDRA QUEENSLAND		
SCALE: SHEET SIZE:		
NOT TO SCALE AT A1		
DRAWING TITLE: ELECTRICAL SERVICES NOTES		
PROJECT NO: DRAWING NO: REVISION:		
C3470a E02 B		

THE COPYRIGHT OF THIS DRAWING REMAINS THE PROPERTY OF THE ELECTRICAL DESIGN GROUP.

USE FIGURED DIMENSIONS IN PREFERENCE TO SCALE.

ALL DIMENSIONS TO BE VERIFIED ONSITE.



B	TENDER	06/08/2025
REV:	DESCRIPTION:	DATE:

ELECTRICAL DESIGN GROUP
ELECTRICAL BUILDING SERVICES CONSULTANTS

BRISBANE: P.O. Box 15 Sherwood Qld 4075
Phone: (07) 3278 4375
Email: brisbane@edg.net.au
Web: www.edg.net.au

ELECTRICAL DESIGN GROUP BRISBANE PTY LTD
ACN 092 710 793

TRADING AS:
ELECTRICAL DESIGN
GROUP

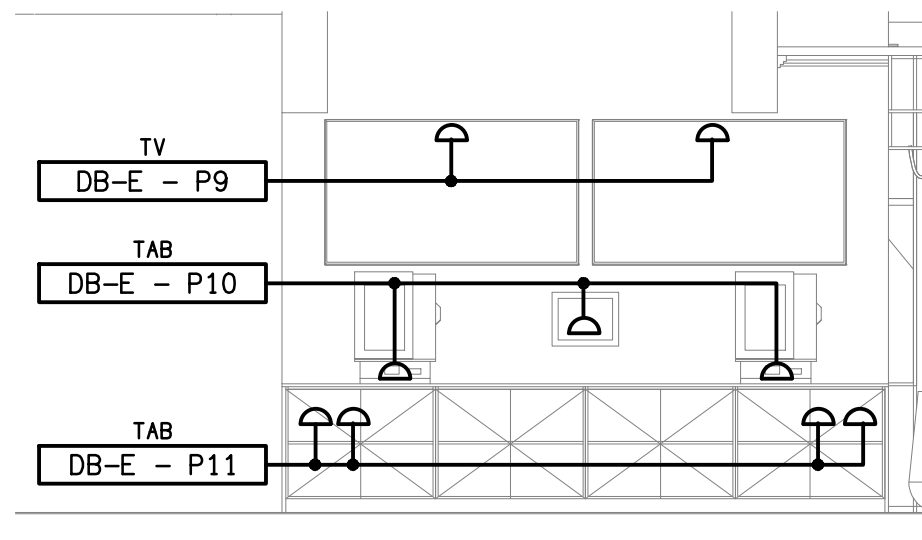
PROJECT:
**GOLDEN BEACH TAVERN
CALOUNDRA**

SITE ADDRESS:
**32 BOWMAN ROAD, CALOUNDRA
QUEENSLAND**

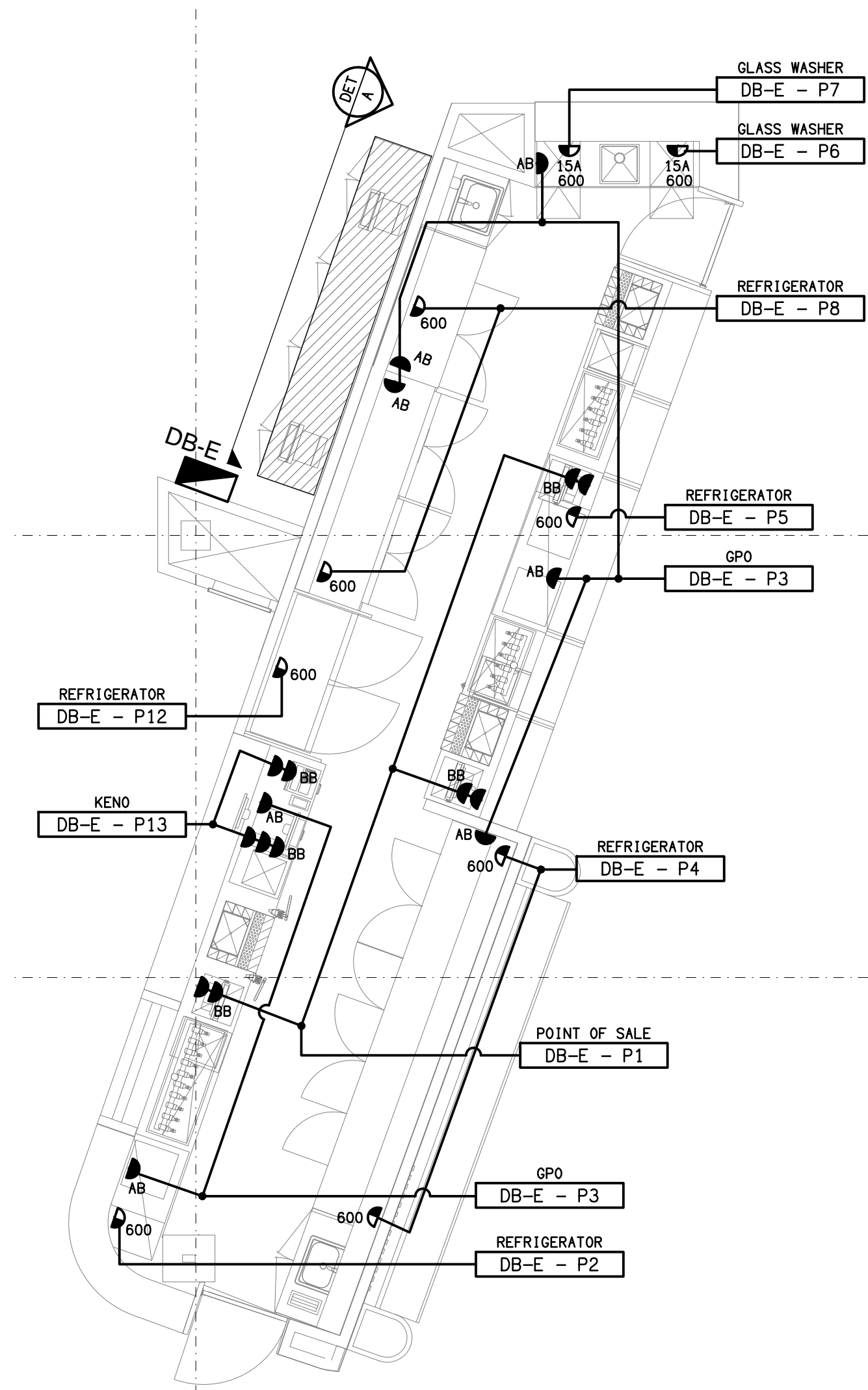
SCALE: 1:100 SHEET SIZE: AT A1

DRAWING TITLE:
**ELECTRICAL SERVICES
FLOOR PLAN**

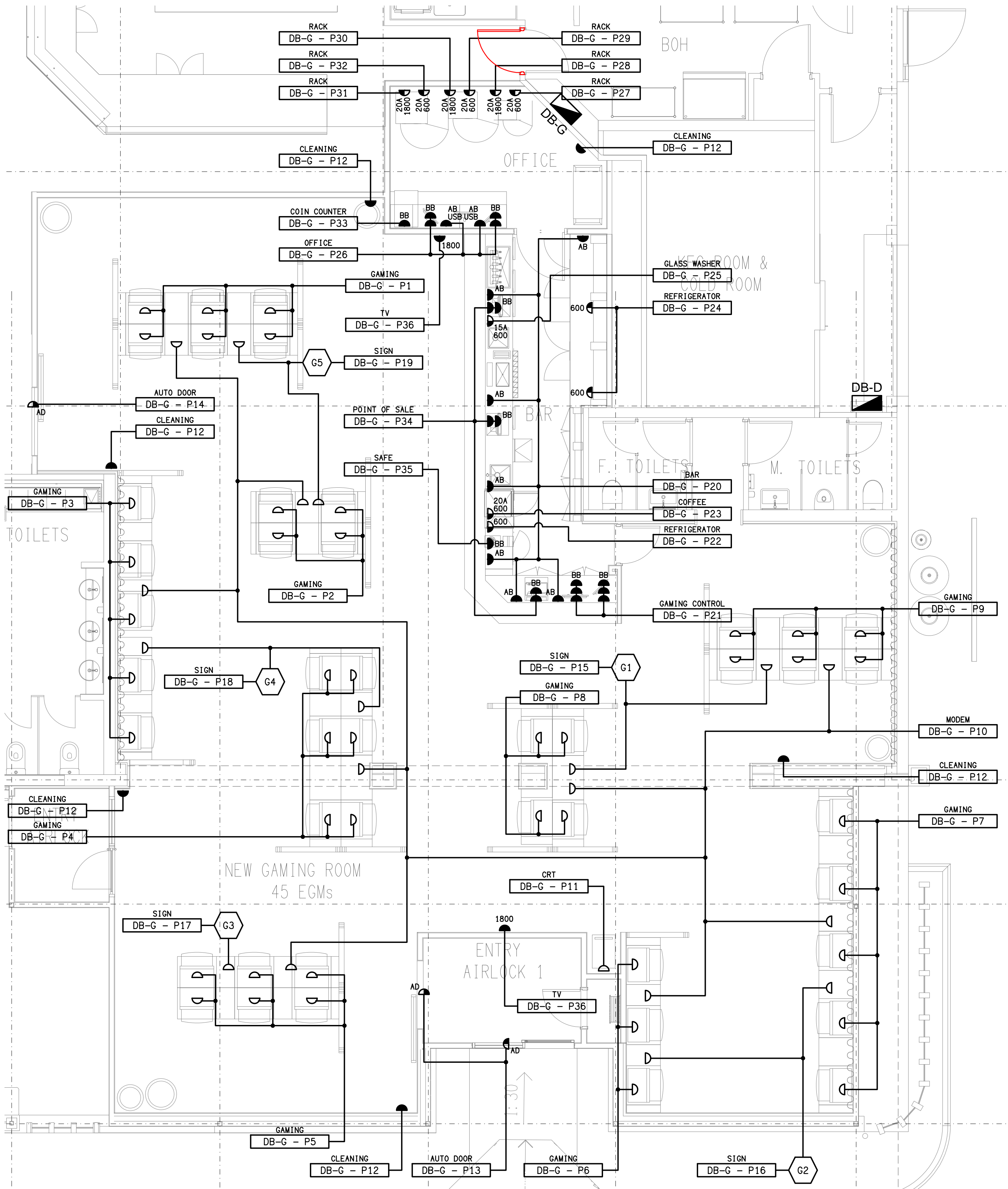
PROJECT NO: DRAWING NO: REVISION:
C3470a E03 B



DETAIL A
TAB & KENO WALL ELEVATION
SCALE 1: 50



SPORTS BAR
FLOOR PLAN
SCALE 1: 50



GAMING ROOM
FLOOR PLAN
SCALE 1: 50

THE COPYRIGHT OF THIS DRAWING REMAINS THE PROPERTY OF THE ELECTRICAL DESIGN GROUP.

USE FIGURED DIMENSIONS IN PREFERENCE TO SCALE.

ALL DIMENSIONS TO BE VERIFIED ONSITE.

B	TENDER	06/08/2025
REV:	DESCRIPTION:	DATE:

ELECTRICAL DESIGN GROUP
ELECTRICAL BUILDING SERVICES CONSULTANTS

BRISBANE: P.O. Box 15 Sherwood Qld 4075
Phone: (07) 3278 4375
Email: brisbane@edg.net.au
Web: www.edg.net.au

ELECTRICAL DESIGN GROUP BRISBANE PTY LTD
ACN 092 710 793

TRADING AS:
ELECTRICAL DESIGN
GROUP

PROJECT:

**GOLDEN BEACH TAVERN
CALOUNDRA**

SITE ADDRESS:

32 BOWMAN ROAD, CALOUNDRA
QUEENSLAND

SCALE: SHEET SIZE:

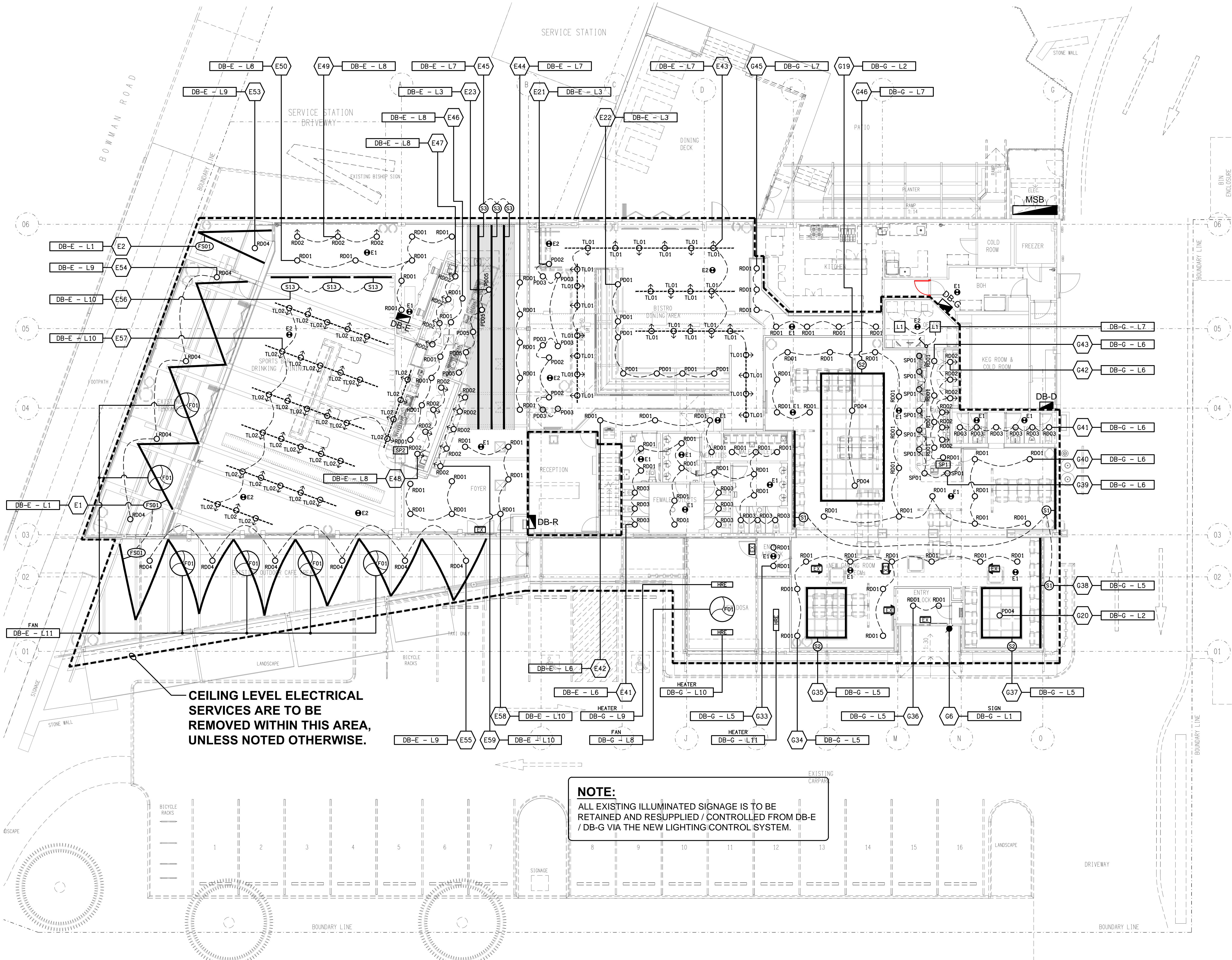
1:50 AT A1

DRAWING TITLE:

**ELECTRICAL SERVICES
GAMING ROOM & BAR
FLOOR PLANS**

PROJECT NO: DRAWING NO: REVISION:

C3470a E04 B



B	TENDER	06/08/2025
REV:	DESCRIPTION:	DATE:

ELECTRICAL DESIGN GROUP
ELECTRICAL BUILDING SERVICES CONSULTANTS

BRISBANE: P.O. Box 15 Sherwood Qld 4075
Phone: (07) 3278 4375
Email: brisbane@edg.net.au
Web: www.edg.net.au

ELECTRICAL DESIGN GROUP BRISBANE PTY LTD
ACN 092 710 793

TRADING AS:
ELECTRICAL DESIGN GROUP

PROJECT:
**GOLDEN BEACH TAVERN
CALOUNDRA**

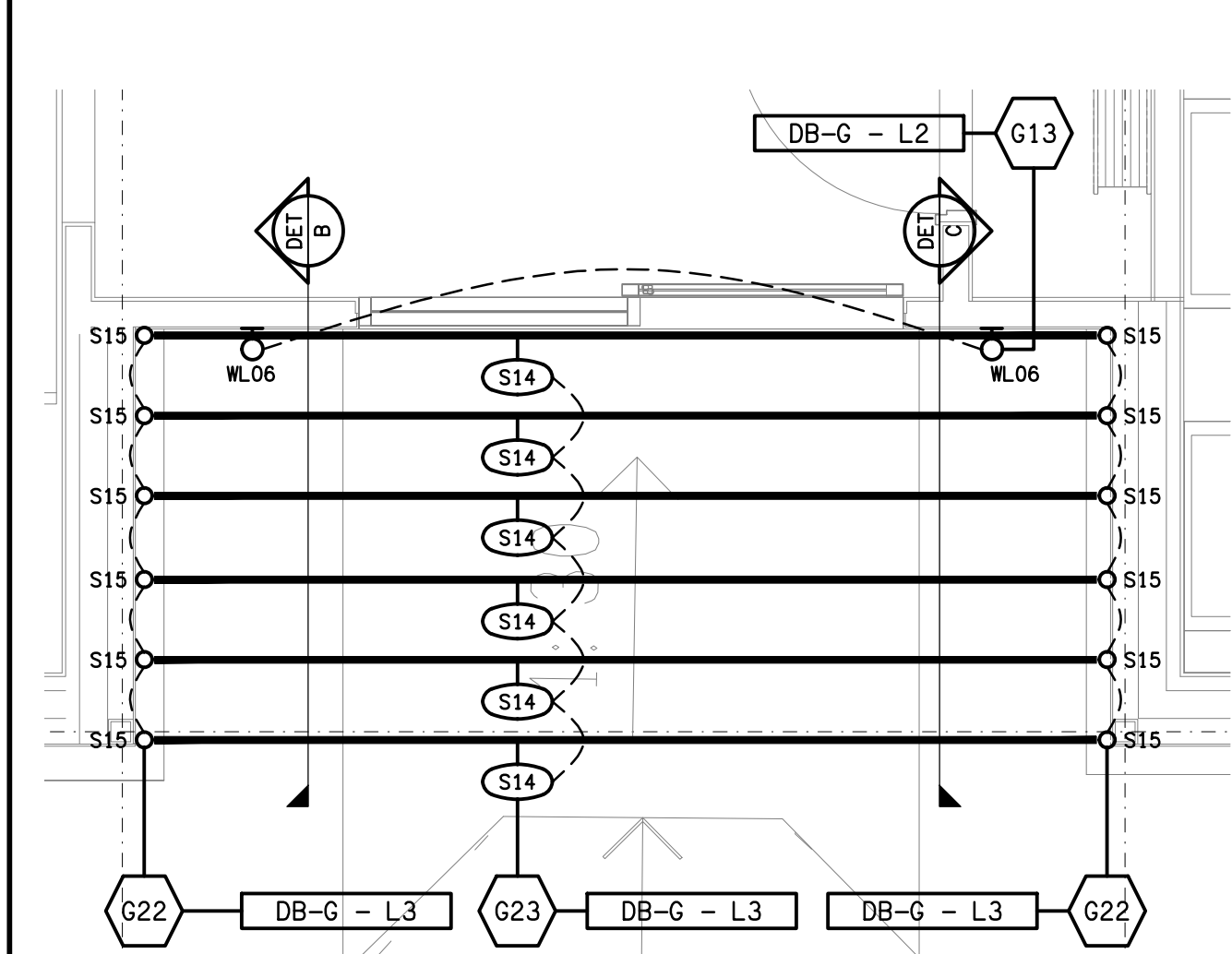
SITE ADDRESS:
32 BOWMAN ROAD, CALOUNDRA
QUEENSLAND

SCALE: 1:100 SHEET SIZE: AT A1

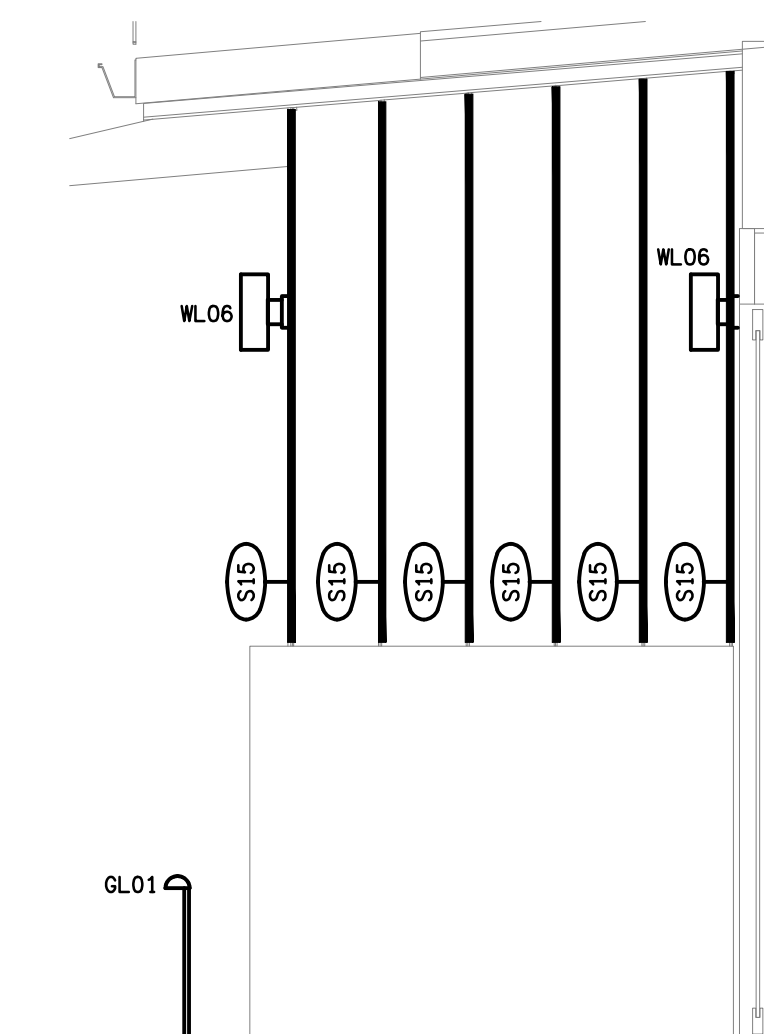
DRAWING TITLE:
**ELECTRICAL SERVICES
REFLECTED CEILING PLAN**

PROJECT NO: DRAWING NO: REVISION:

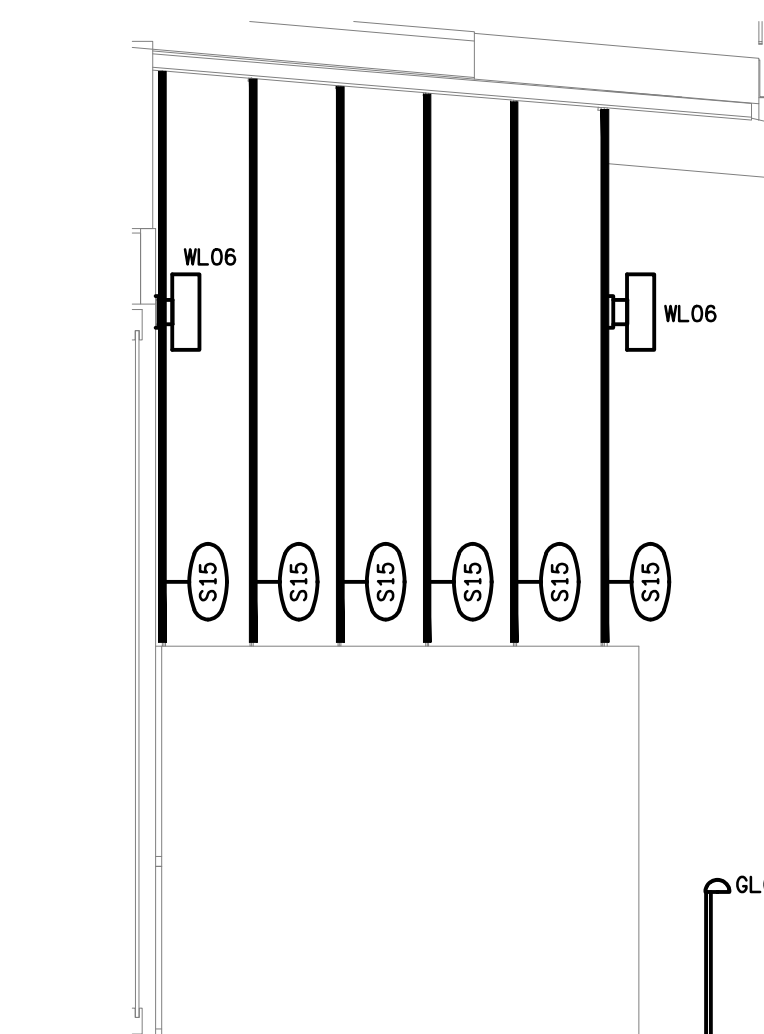
C3470a E05 B



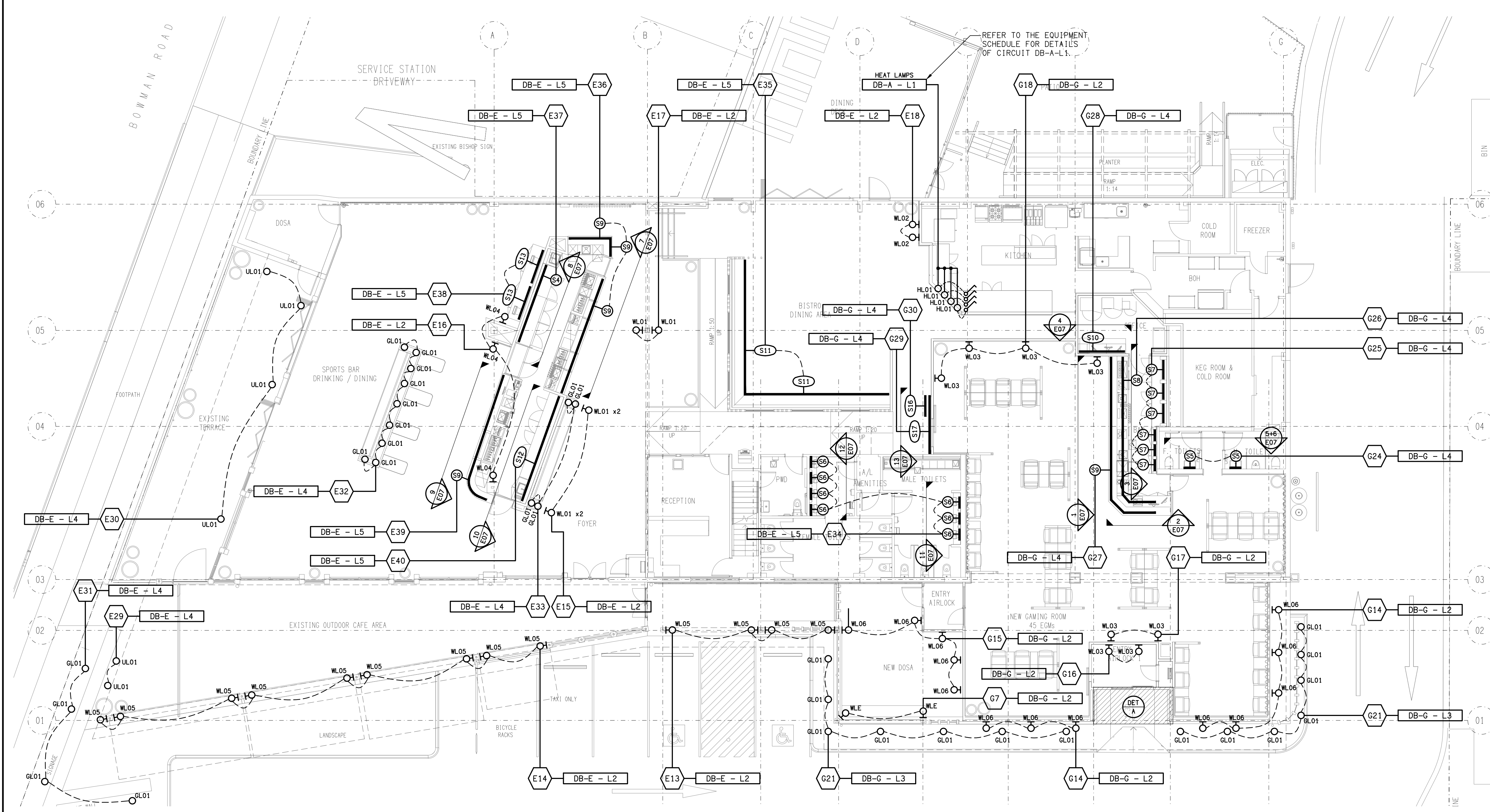
DETAIL A
GAMING ENTRY PLAN
SCALE 1:25



DETAIL B
GAMING ENTRY ELEVATION
SCALE 1:25



DETAIL C
GAMING ENTRY ELEVATION
SCALE 1:25



THE COPYRIGHT OF THIS DRAWING REMAINS THE PROPERTY OF THE ELECTRICAL DESIGN GROUP.

USE FIGURED DIMENSIONS IN PREFERENCE TO SCALE.

ALL DIMENSIONS TO BE VERIFIED ONSITE.

B	TENDER	06/08/2025
REV:	DESCRIPTION:	DATE:

ELECTRICAL DESIGN GROUP
ELECTRICAL BUILDING SERVICES CONSULTANTS

BRISBANE: P.O. Box 15 Sherwood Qld 4075
Phone: (07) 3278 4375
Email: brisbane@edg.net.au
Web: www.edg.net.au

ELECTRICAL DESIGN GROUP BRISBANE PTY LTD
ACN 092 710 793

TRADING AS:
ELECTRICAL DESIGN GROUP

PROJECT:
GOLDEN BEACH TAVERN CALOUNDRA

SITE ADDRESS:
32 BOWMAN ROAD, CALOUNDRA QUEENSLAND

SCALE: 1:100 SHEET SIZE: A1

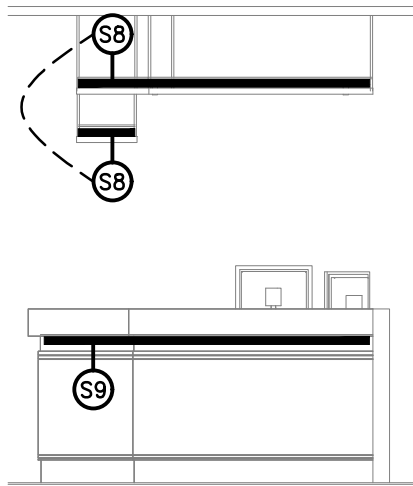
DRAWING TITLE:
ELECTRICAL SERVICES JOINERY & WALL LIGHTING PLAN

PROJECT NO: DRAWING NO: REVISION:

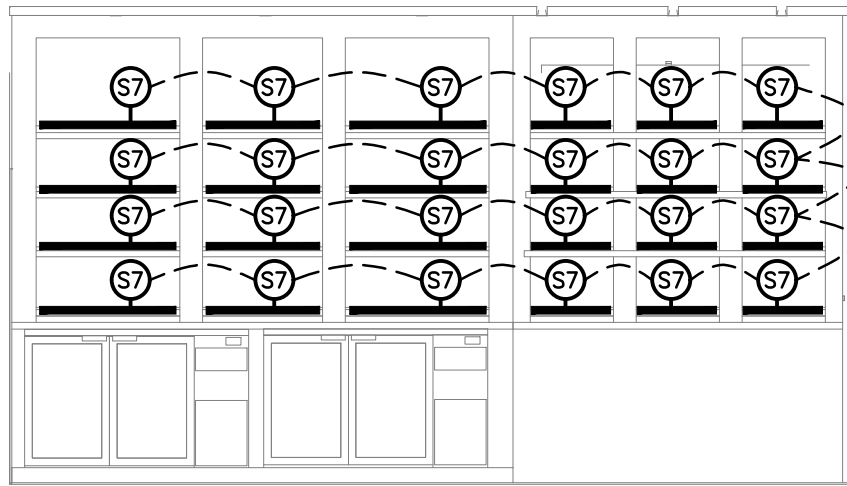
C3470a E06 B



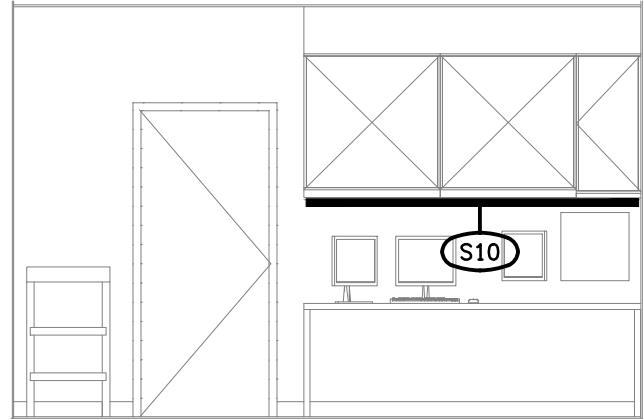
DETAIL 1
GAMING BAR COUNTER
SCALE 1: 50



DETAIL 2
GAMING BAR COUNTER
SCALE 1: 50



DETAIL 3
GAMING BAR REAR SHELVING
SCALE 1: 50

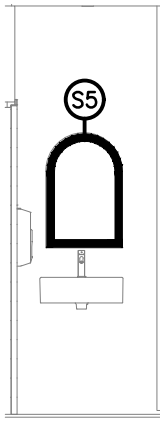


DETAIL 4
OFFICE WORKSTATION
SCALE 1: 50

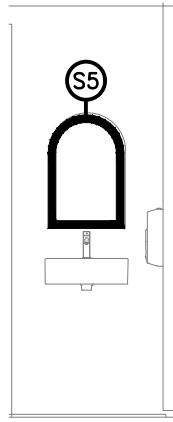
THE COPYRIGHT OF THIS DRAWING REMAINS THE PROPERTY OF THE ELECTRICAL DESIGN GROUP.

USE FIGURED DIMENSIONS IN PREFERENCE TO SCALE.

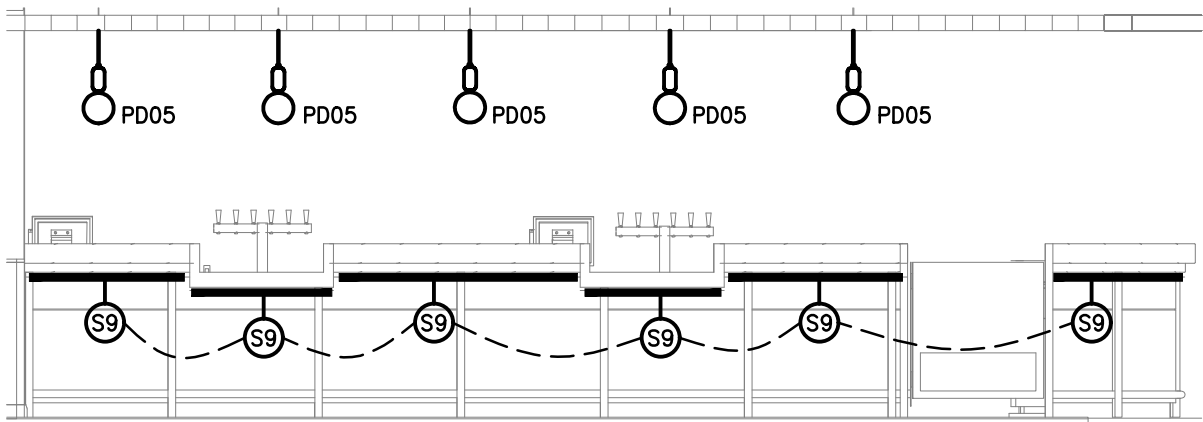
ALL DIMENSIONS TO BE VERIFIED ONSITE.



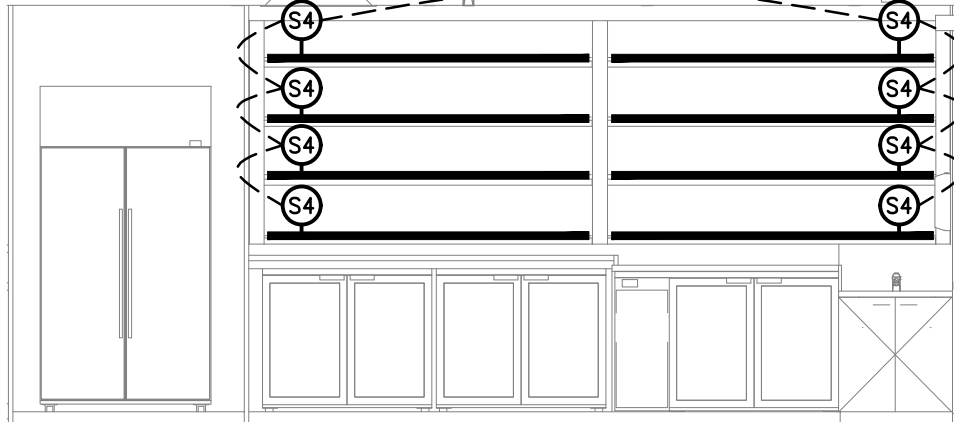
DETAIL 5
FEMALE GAMING
SCALE 1: 50



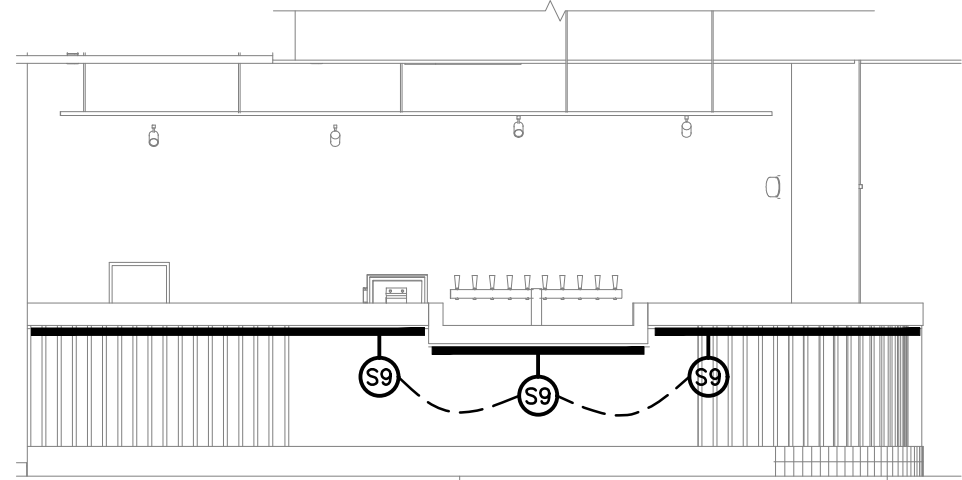
DETAIL 6
MALE GAMING
SCALE 1: 50



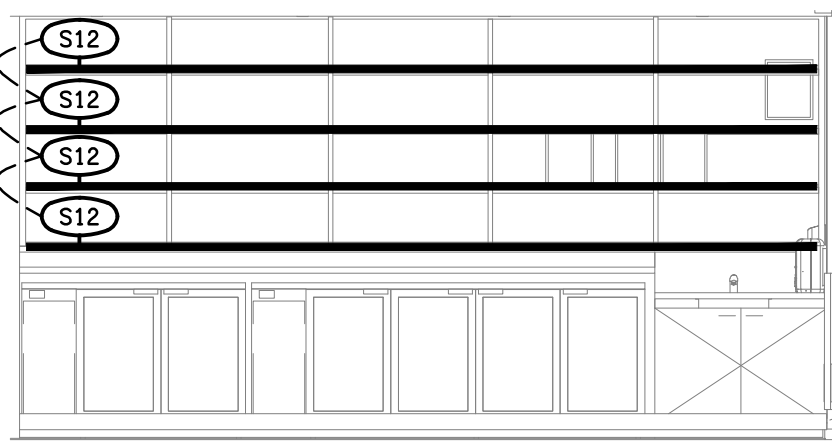
DETAIL 7
BISTRO BAR COUNTER
SCALE 1: 50



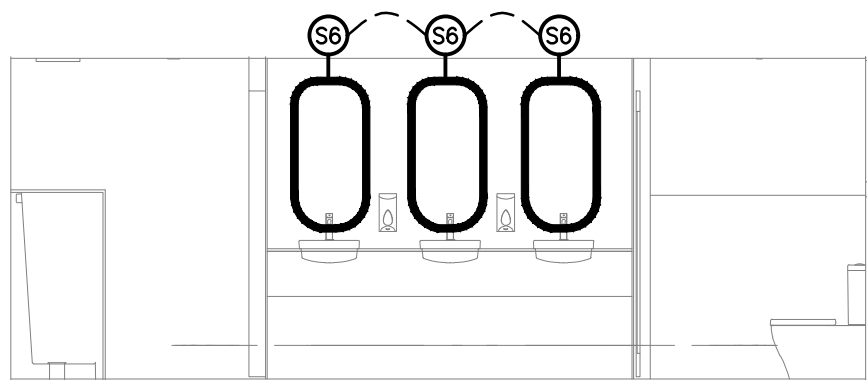
DETAIL 8
BISTRO BAR REAR WALL
SCALE 1: 50



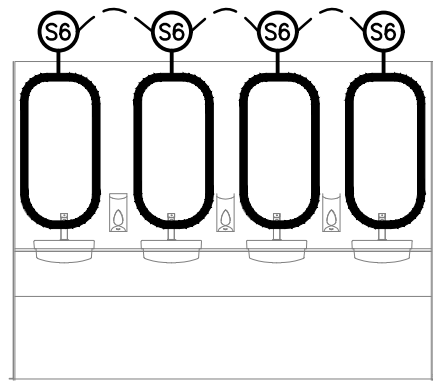
DETAIL 9
SPORTS BAR COUNTER
SCALE 1: 50



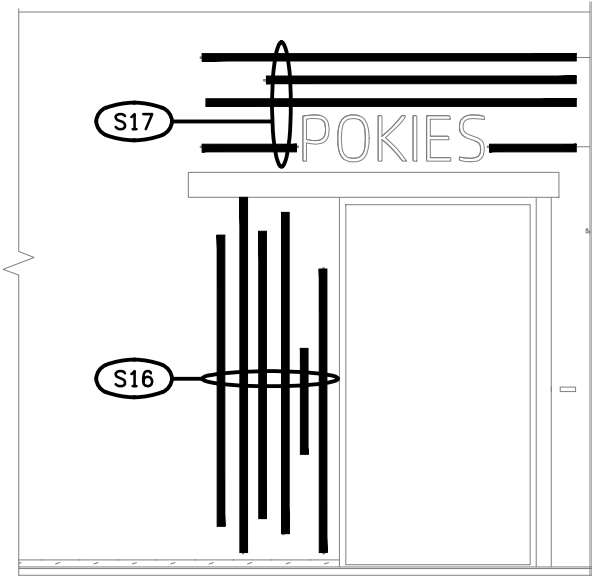
DETAIL 10
SPORTS BAR REAR WALL
SCALE 1: 50



DETAIL 11
BISTRO MALE
SCALE 1: 50



DETAIL 12
BISTRO MALE
SCALE 1: 50



DETAIL 13
GAMING ROOM INTERNAL ENTRY
SCALE 1: 50

B	TENDER	06/08/2025
REV:	DESCRIPTION:	DATE:

ELECTRICAL DESIGN GROUP
ELECTRICAL BUILDING SERVICES CONSULTANTS

BRISBANE: P.O. Box 15, Sherwood Qld 4075
Phone: (07) 3278 4375
Email: brisbane@edg.net.au
Web: www.edg.net.au

ELECTRICAL DESIGN GROUP BRISBANE PTY LTD
ACN 092 710 793

TRADING AS:
ELECTRICAL DESIGN GROUP

PROJECT:

**GOLDEN BEACH TAVERN
CALOUNDRA**

SITE ADDRESS:

32 BOWMAN ROAD, CALOUNDRA
QUEENSLAND

SCALE: SHEET SIZE:

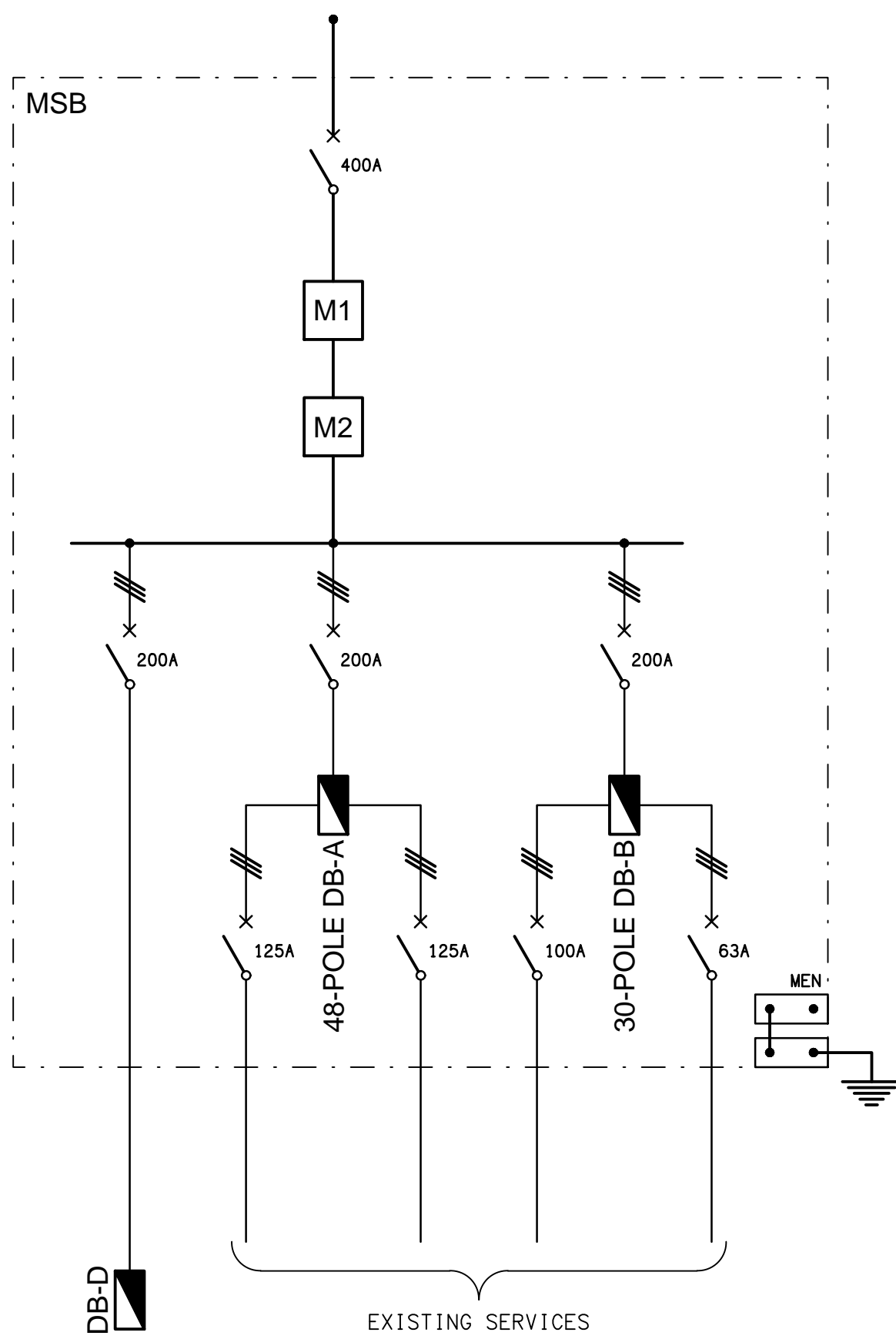
1:50 AT A1

DRAWING TITLE:

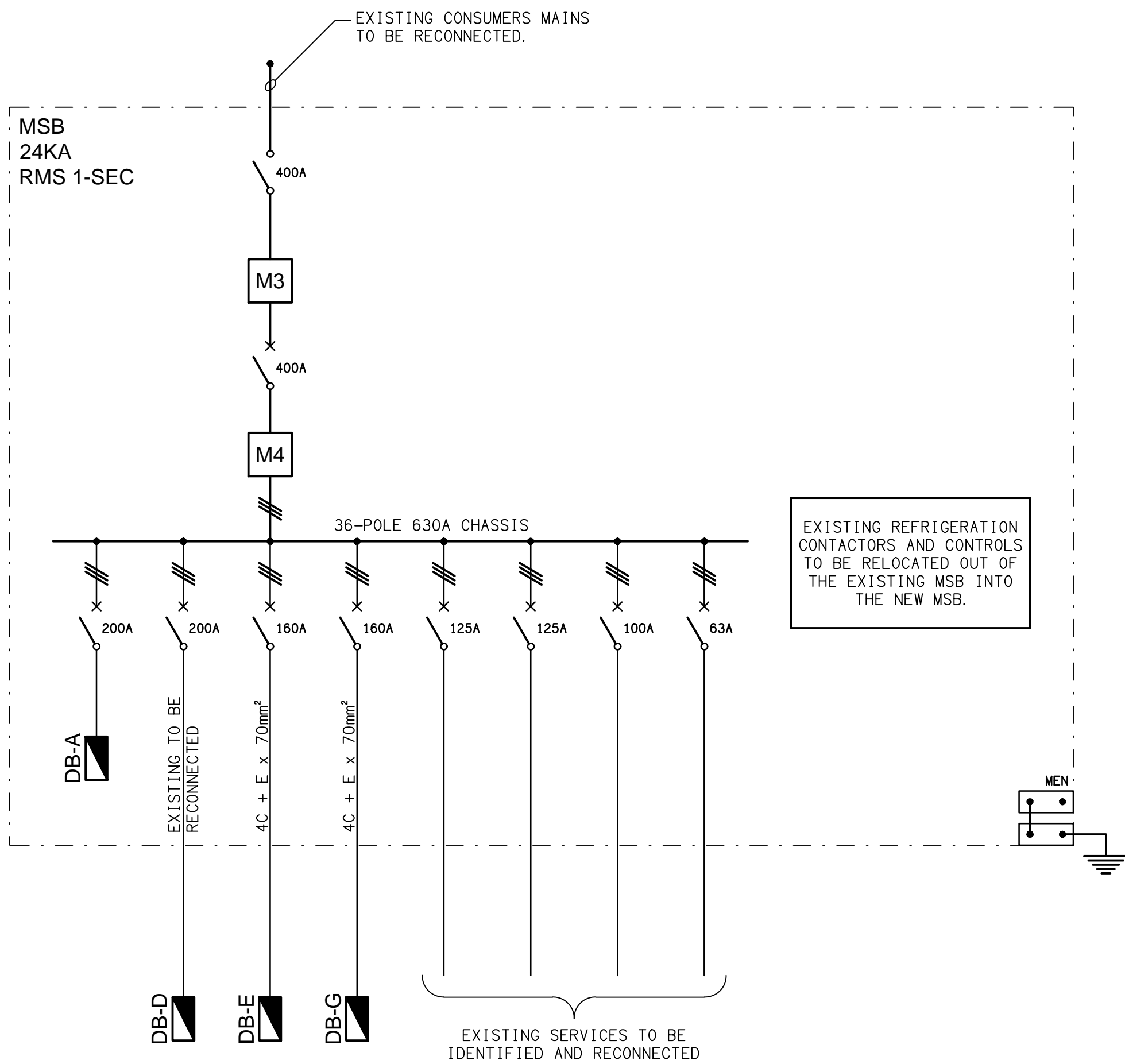
**ELECTRICAL SERVICES
JOINERY & WALL LIGHTING
ELEVATIONS**

PROJECT NO: DRAWING NO: REVISION:

C3470a E07 B



EXISTING
MSB CONFIGURATION
NOT TO SCALE



PROPOSED
MSB CONFIGURATION
NOT TO SCALE

B	TENDER	06/08/2025
REV:	DESCRIPTION:	DATE:

ELECTRICAL DESIGN GROUP
ELECTRICAL BUILDING SERVICES CONSULTANTS

BRISBANE: P.O. Box 15, Sherwood Qld 4075
Phone: (07) 3278 4375
Email: brisbane@edg.net.au
Web: www.edg.net.au

ELECTRICAL DESIGN GROUP BRISBANE PTY LTD
ACN 092 710 793

TRADING AS:
ELECTRICAL DESIGN
GROUP

PROJECT:

**GOLDEN BEACH TAVERN
CALOUNDRA**

SITE ADDRESS:

**32 BOWMAN ROAD, CALOUNDRA
QUEENSLAND**

SCALE: SHEET SIZE:

NOT TO SCALE AT A1

DRAWING TITLE:

**ELECTRICAL SERVICES
POWER SCHEMATICS**

PROJECT NO: DRAWING NO: REVISION:

C3470a E08 B