



ELECTRICAL DESIGN GROUP

ELECTRICAL BUILDING SERVICES CONSULTANTS

P.O. Box 15, SHERWOOD Q. 4075

Phone: (07) 3278 4375

Website: www.edg.net.au Email: brisbane@edg.net.au

C3429a - WOODCREST STATE COLLEGE - CHANGE FACILITY & COVERED WALKWAYS C3429a-0001(1).xls

ELECTRICAL SERVICES CONTRACT DOCUMENT SCHEDULE

REVISION 1 - 28 FEBRUARY 2025

ISSUING INFORMATION				DATE OF ISSUE							
				DAY	13	17	28				
				MONTH	12	12	02				
				YEAR	24	24	25				
				REASON FOR ISSUE	C	C	AC				
AC = AS CONSTRUCTED				C = CONSTRUCTION				N = COORDINATION			
								P = PRELIMINARY			
								T = TENDER			

DISTRIBUTION				NUMBER OF COPIES							
WWW.EDG.NET.AU				1E	1E	1E					
ASW ELECTRICAL				1E	1E	1E					
P = PRINT				T = TRACING				D = DISC			
								E = EMAIL			
								F = FAX			

DOCUMENTS		TITLE		REVISION							
C3429a-E01.dwg		ELECTRICAL WORKS PLAN		A		1					
C3429a-E02.dwg		NO LONGER REQUIRED		A	B	-					
C3429a-0001.xls		CONTRACT DOCUMENT SCHEDULE		A	B	1					

LIGHTING LEGEND

	MANUFACTURER	FITTING NAME	INSTALLATION METHOD	IP RATING	FINISH (*)
F1	CLEVERTRONICS	ARGONAUT PRO WP 600mmL	SURFACE MOUNTED	IP65	GREY
Ⓢ	ROBUS	VEGA GEN2 LED BULKHEAD	SURFACE MOUNTED	IP65	WHITE

	MANUFACTURERS	FITTING NAME	CAT NO.	INSTALLATION METHOD	IP RATING
E1	CLEVERTRONICS OR APPROVED EQUAL	LP LIFELIGHT PRO IP65	CLIFE-PRO -SM-WP (CT PLUS)	SURFACE MOUNTED	IP65

EXISTING SERVICES LEGEND

- Ex DB
EXISTING DISTRIBUTION BOARD
- CRex
EXISTING COMMS HUB
- Ex Exp
EXISTING SECURITY EXPANDER PANEL

ABBREVIATIONS

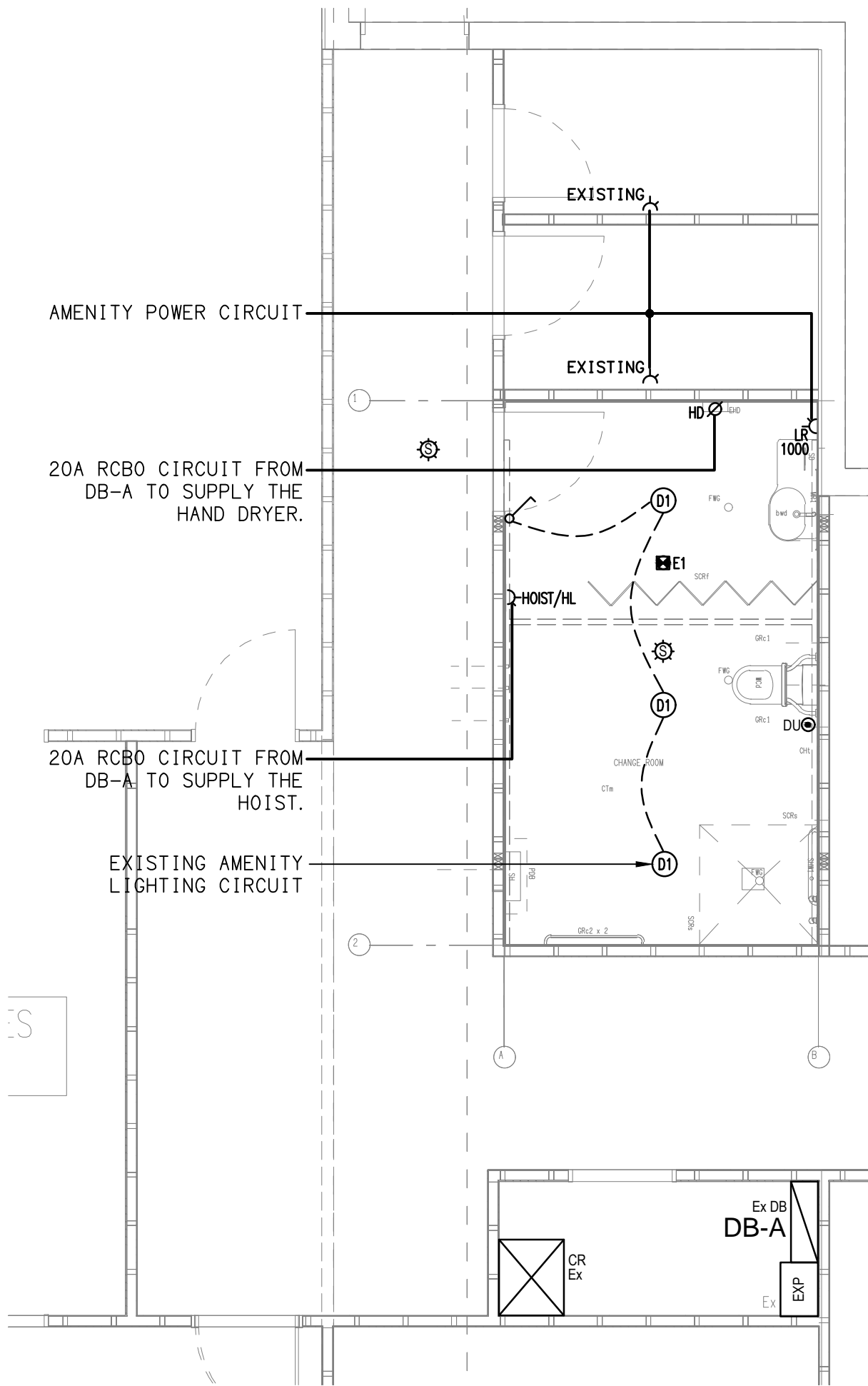
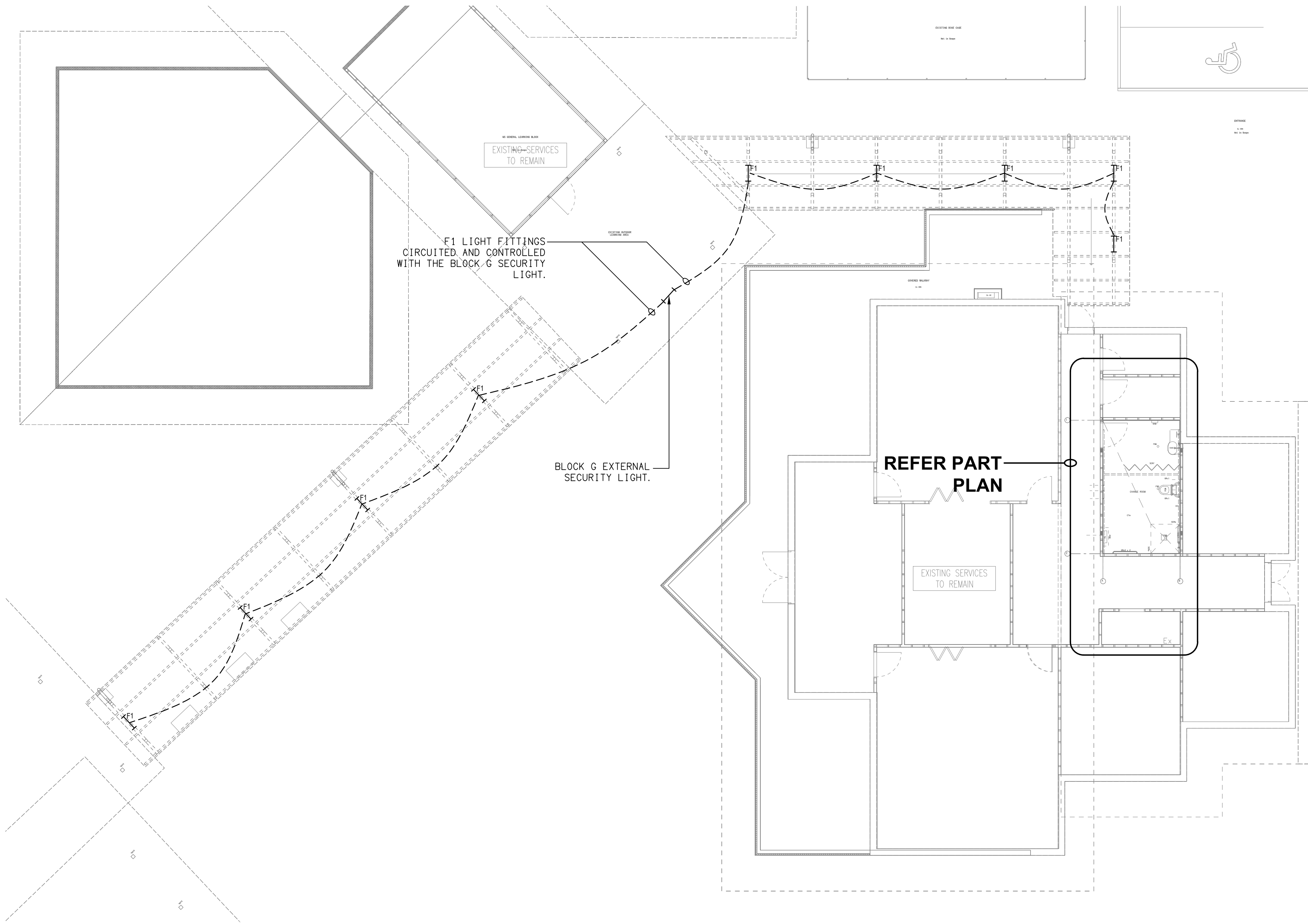
- 500 - MOUNTED 500mm AFFL
COMMS - COMMUNICATIONS
EX - EXISTING
GPO - SWITCHED SOCKET OUTLET
HD - HAND DRYER
HL - HIGH LEVEL
LR - LARGE ROCKER
n - QUANTITY
PE - PHOTO ELECTRIC CELL

POWER LEGEND

- ⚡ 10A DOUBLE SWITCH SOCKET OUTLET C/W SAFETY SHUTTER OVER ACTIVE, AND CAPABLE TO BE USED BY EITHER TWO PIN OR THREE PIN PLUGS. MOUNT AT 500mm AFFL TO CENTRE OF OUTLET U.N.O. TYPE: CLIPSAL STANDARD RANGE
- ⌀ SINGLE PHASE PERMANENT CONNECTION C/W ADJACENT IP RATED ISOLATOR TYPE: CLIPSAL 56 SERIES

ELECTRONIC SECURITY LEGEND

- 🔔 SECURITY SIREN ALARM AND BLUE STROBE, C/W SEPARATE DEDICATED BATTERY, SOUND LEVEL OUTPUT 130dB AT 1M, & 2 OFF PROTECTIVE ENCLOSURES. TYPE: TECHNOALARM BRAND OR APPROVED EQUAL
- 🔑 DURESS BUTTON, FIXED DURESS ACTUATORS SHALL BE OF STAINLESS STEEL CONSTRUCTION AND WITH A MECHANICALLY LATCHING, KEY-RESETABLE DPDT SWITCH. ALL ACTUATOR RESET MECHANISMS ARE TO BE COMMON-KEYED. SUPPLY THE INSPECTING OFFICER WITH ONE KEY PER DURESS ACTUATOR AT THE TIME OF SYSTEM COMMISSIONING. TYPE: ADEMCO STYLE, SEADAN SECURITY SMART 003



PART PLAN
ELECTRICAL WORKS
SCALE 1:50