



ELECTRICAL DESIGN GROUP

ELECTRICAL BUILDING SERVICES CONSULTANTS

P.O. Box 15, SHERWOOD Q. 4075

Phone: (07) 3278 4375

Website: www.edg.net.au Email: brisbane@edg.net.au

C3396a - LLEWELLYN MOTORS SPRINGFIELD - LOT 34

C3396a-0001(D).xls

ELECTRICAL SERVICES CONTRACT DOCUMENT SCHEDULE

REVISION D - 24 FEBRUARY 2025

ISSUING INFORMATION				DATE OF ISSUE							
				DAY	07	28	14	24			
				MONTH	11	11	02	02			
				YEAR	24	24	25	25			
REASON FOR ISSUE				P	50D	80D	80D				
A = APPROVAL C = CONSTRUCTION D = % DEVELOPED AS NOTED P = PRELIMINARY T = TENDER											

DISTRIBUTION				NUMBER OF COPIES							
WWW.EDG.NET.AU				1E	1E	1E	1E				
ROHRIG CONSTRUCTIONS				1E	1E	1E	1E				
P = PRINT T = TRACING D = DISC E = EMAIL F = FAX											

DOCUMENTS		REVISION									
C3396a-E01.dwg	LEGEND & DETAILS	A	B	D	E						
C3396a-E02.dwg	NOTES	A	B	C	D						
C3396a-E03.dwg	SITE PLAN	A	B	D	E						
C3396a-E04.dwg	GROUND LEVEL FLOOR PLAN	A	B	C	D						
C3396a-E05.dwg	GROUND LEVEL REFLECTED CEILING PLAN	A	B	C	D						
C3396a-E06.dwg	MEZZANINE LEVEL FLOOR & CEILING PLANS	A	B	C	D						
C3396a-E07.dwg	ROOF PLAN & ELEVATIONS	A	B	C	D						
C3396a-E08.dwg	POWER & LIGHTING CONTROL SCHEMATICS	A	B	D							
C3396a-0001.xls	CONTRACT DOCUMENT SCHEDULE	A	B	C	D						
C3396a-0002.xls	EQUIPMENT SCHEDULE	A	B	C	D						
C3396a-0004.xls	DISTRIBUTION BOARD DB-A SCHEDULE	A									



ELECTRICAL DESIGN GROUP

ELECTRICAL BUILDING SERVICES CONSULTANTS

P.O. Box 15, SHERWOOD Q. 4075

Phone: (07) 3278 4375 Fax: (07) 3716 0222

Web Site: www.edg.net.au Email: brisbane@edg.net.au

C3396a - LLEWELLYN MOTORS SPRINGFIELD - LOT 34

C3396a-0002(D).xls

ELECTRICAL EQUIPMENT SCHEDULE

REVISION D - 24 FEBRUARY 2025

THE EQUIPMENT SUPPLIER CONTACT DETAILS MAY BE AVAILABLE ON THE EDG WEBSITE VIA THE FOLLOWING LINK www.edg.net.au/links.html					
TYPE	LAMPS	DESCRIPTION	COLOUR / ACCESSORY	CATALOGUE No	REV
L1		A SINGLE HORIZONTAL RUN UNDER THE OVERHEAD CUPBOARDS HARD AGAINST THE SPLASHBACK LED STRIP LIGHT 4000K WHITE LEDS AT 12MM SPACING WITH REMOTE CONTROL GEAR. THE SUPPLIER IS TO CUT / JOIN THE LED STRIPS TO SUIT THE SITE DIMENSIONS. DO NOT CUT THE LED STRIPS ON SITE SCREW FIX THE ALUMINIUM SUPPORT IN PLACE.		NEON PRODUCTS AUSTRALIA LF-DFB-NW-300-12 + PR-LIN172153-F	A
L2	34W 4000K LED	600 X 600 LAY IN FLAT PLATE LED FITTING C/W REMOTE DRIVER MOUNTED IN THE CEILING T BAR	WHITE TRIM	GAMMA ILLUMINATION AXIS 1548-4K-34W	A
L3	34W 4000K LED	600 X 600 LAY IN FLAT PLATE LED FITTING C/W REMOTE DRIVER AND A RECESS KIT	WHITE TRIM	GAMMA ILLUMINATION AXIS 1548-4K-34W + RECESS KIT	A
L4	13W 3000K LED	AMENITY RECESSED DOWNLIGHT C/W REMOTE DRIVER	WHITE	GAMMA ILLUMINATION MYLO 1004-WFL-4K-13W	A
L5	22W 4000K LED	RECESSED 62 DEG DOWNLIGHT C/W REMOTE DRIVER	WHITE	GAMMA ILLUMINATION COBALT 1441-4K-22W	A
L6	60W 4000K LED	RECESSED 54 DEG DOWNLIGHT C/W REMOTE DRIVER	WHITE	GAMMA ILLUMINATION COBALT 1444-4K-60W	A
L7	36W 4000K LED	RECESSED 62 DEG DOWNLIGHT C/W REMOTE DRIVER	WHITE	GAMMA ILLUMINATION COBALT 1441-4K-36W	A
L8	28W 4000K LED	RECESSED 41 DEG DOWNLIGHT C/W REMOTE DRIVER	WHITE	GAMMA ILLUMINATION COBALT 1442-4K-28W	A
L9	22W 4000K LED	RECESSED 41 DEG DOWNLIGHT C/W REMOTE DRIVER	WHITE	GAMMA ILLUMINATION COBALT 1402-4K-22W	A
L10	150W 4000K LED	T SUSPENDED HIGH BAY C/W INTEGRAL DRIVER SUSPEND AS HIGH AS PRACTICAL	BLACK	GAMMA ILLUMINATION ORBIT 881483-4K-WFL	A
L11	45W LED 4000K	1200 LONG IP65 DIFFUSED BATTEN C/W INTEGRAL ELECTRONIC CONTROL GEAR AND A NON MAINTAINED AS2293 EMERGENCY PACK SUSPENDED / SURFACE MOUNTED AS REQUIRED. THE L11 FITTINGS ARE NOT SWITCHED AND ARE TO ONLY OPERATE UPON POWER SUPPLY FAILURE IN ACCORDANCE WITH AS2293	NA	GAMMA ILLUMINATION STORM 1311-4K	A
L12	180W 5000K LED	SURFACE MOUNTED IP 65 CARPARK ENTRY LIGHT C/W INTEGRAL DIMMABLE DRIVER AND ILLUMINATION LEVEL / MOVEMENT SENSOR. PROVIDE THE L12 FITTINGS WITH AN enLIGHTEN CECS CONTROLLER.	BLACK	EQUAL TO enLIGHTEN TAURO BLACK TB180D-57-S1-CECS	A



ELECTRICAL DESIGN GROUP

ELECTRICAL BUILDING SERVICES CONSULTANTS

P.O. Box 15, SHERWOOD Q. 4075

Phone: (07) 3278 4375 Fax: (07) 3716 0222

Web Site: www.edg.net.au Email: brisbane@edg.net.au

C3396a - LLEWELLYN MOTORS SPRINGFIELD - LOT 34

C3396a-0002(D).xls

ELECTRICAL EQUIPMENT SCHEDULE

REVISION D - 24 FEBRUARY 2025

THE EQUIPMENT SUPPLIER CONTACT DETAILS MAY BE AVAILABLE ON THE EDG WEBSITE VIA THE FOLLOWING LINK www.edg.net.au/links.html					
TYPE	LAMPS	DESCRIPTION	COLOUR / ACCESSORY	CATALOGUE No	REV
L13	2250LUMEN/M 4000K LED	3800 LONG RECESSED EXTRUSION C/W INTEGRAL DRIVER	WHITE	KLIK SYSTEMS KALLI 060 BEAM DR	A
L14	36W LED 4000K	1200 LONG SURFACE MOUNTED IP65 DIFFUSED BATTEN C/W INTEGRAL ELECTRONIC CONTROL GEAR AND PRESENCE DETECTION SENSOR	LIGHT GREY	GAMMA ILLUMINATION STORM 1558-CCT-36W-MS	A
L15	36W LED 4000K	1200 LONG SURFACE MOUNTED IP65 DIFFUSED BATTEN C/W INTEGRAL ELECTRONIC CONTROL GEAR	LIGHT GREY	GAMMA ILLUMINATION STORM 1558-CCT-36W	A
L16	50W 4000K LED	WALL MOUNTED CARPARK LIGHT C/W INTEGRAL DRIVER	BLACK FITTING	MELEC ML-ROX-50-4K-PE-BK	A
L17	50W 4000K LED	9M POLE AND CARPARK LIGHT C/W INTEGRAL DRIVER ALL 240 VOLT CABLING TO THE POLES ARE TO BE RUN IN CONDUITS AT LEAST 50MM TO FACILITATE FUTURE POWER CABLING. ALL CONDUITS ARE TO HAVE A SPARE DRAW WIRE AND BE SHOWN ON THE AS CONSTRUCTED DOCUMENTS.	BLACK FITTING BLACK POLE	MELEC ML-ROX-50-4K-PE-BK	C
L18	150W 4000K LED	9M POLE AND CARPARK LIGHT C/W INTEGRAL DRIVER ALL 240 VOLT CABLING TO THE POLES ARE TO BE RUN IN CONDUITS AT LEAST 50MM TO FACILITATE FUTURE POWER CABLING. ALL CONDUITS ARE TO HAVE A SPARE DRAW WIRE AND BE SHOWN ON THE AS CONSTRUCTED DOCUMENTS.	BLACK FITTING BLACK POLE	MELEC ML-ROX-150-4K-PE-BK	C
L19	200W 4000K LED	SUSPENDED HIGH BAY C/W INTEGRAL DRIVER SUSPEND AS HIGH AS PRACTICAL	BLACK	GAMMA ILLUMINATION ORBIT 881503-4K-WFL	C
L23	100W 4000K LED	9M POLE AND CARPARK LIGHT C/W INTEGRAL DRIVER . ALL 240 VOLT CABLING TO THE POLES ARE TO BE RUN IN CONDUITS AT LEAST 50MM TO FACILITATE FUTURE POWER CABLING. ALL CONDUITS ARE TO HAVE A SPARE DRAW WIRE AND BE SHOWN ON THE AS CONSTRUCTED DOCUMENTS.	BLACK FITTING BLACK POLE	MELEC ML-ROX-100-4K-PE-BK	C



ELECTRICAL DESIGN GROUP

ELECTRICAL BUILDING SERVICES CONSULTANTS

P.O. Box 15, SHERWOOD Q. 4075

Phone: (07) 3278 4375 Fax: (07) 3716 0222

Web Site: www.edg.net.au Email: brisbane@edg.net.au

C3396a - LLEWELLYN MOTORS SPRINGFIELD - LOT 34

C3396a-0002(D).xls

ELECTRICAL EQUIPMENT SCHEDULE

REVISION D - 24 FEBRUARY 2025

THE EQUIPMENT SUPPLIER CONTACT DETAILS MAY BE AVAILABLE ON THE EDG WEBSITE VIA THE FOLLOWING LINK www.edg.net.au/links.html					
TYPE	LAMPS	DESCRIPTION	COLOUR / ACCESSORY	CATALOGUE No	REV
L24	2 X 50W 4000K LED	9M POLE AND TWO CARPARK LIGHTS C/W INTEGRAL DRIVER. ALL 240 VOLT CABLING TO THE POLES ARE TO BE RUN IN CONDUITS AT LEAST 50MM TO FACILITATE FUTURE POWER CABLING. ALL CONDUITS ARE TO HAVE A SPARE DRAW WIRE AND BE SHOWN ON THE AS CONSTRUCTED DOCUMENTS.	BLACK FITTINGS BLACK POLE	2 X MELEC ML-ROX-50-4K-PE-BK	C
E1	LED	EMERGENCY LIGHT: RECESSED NON-MAINTAINED EMERGENCY LIGHT. AS2293 CLASSIFICATION C0-D63 - C90-D63.	WHITE	CLEVERTRONICS LLIFE	A
EX BOH	LED	BACK OF HOUSE EXIT LIGHT: MAINTAINED 24M VIEWING DISTANCE EXIT LIGHT C/W DIFFUSERS & DIRECTIONAL ARROWS AS SHOWN. CEILING OR WALL MOUNT BETWEEN 2100mm & 2700mm AFFL IF THERE IS NO VERTICAL SURFACE TO MOUNT THE FITTING ON WITHIN THIS RANGE CONFIRM THE MOUNTING HEIGHT WITH THE ENGINEER. AS2293 CLASSIFICATION C0-D1.25- C90-D2	WHITE	CLEVERTRONICS LCFLED	A
EX FOH	LED	FRONT OF HOUSE EXIT LIGHT: MAINTAINED 24M VIEWING DISTANCE EXIT LIGHT C/W DIFFUSERS & DIRECTIONAL ARROWS AS SHOWN. CEILING SURFACE MOUNT OR WALL MOUNT BETWEEN 2100mm & 2700mm AFFL IF THERE IS NO VERTICAL SURFACE TO MOUNT THE FITTING ON WITHIN THIS RANGE CONFIRM THE MOUNTING HEIGHT WITH THE ENGINEER. AS2293 CLASSIFICATION C0-D1.25- C90-D2	WHITE	CLEVERTRONICS LUBPRO-SM	A
EX WP	LED	EXIT LIGHT: MAINTAINED WEATHER PROOF 24M VIEWING DISTANCE EXIT LIGHT C/W DIFFUSERS & DIRECTIONAL ARROWS AS SHOWN. CEILING OR WALL MOUNT BETWEEN 2100mm & 2700mm AFFL IF THERE IS NO VERTICAL SURFACE TO MOUNT THE FITTING ON WITHIN THIS RANGE CONFIRM THE MOUNTING HEIGHT WITH THE ENGINEER. AS2293 CLASSIFICATION C0-D1.25- C90-D2	WHITE	CLEVERTRONICS LWELED	A
EMERGENCY PACK		LIGHT FITTINGS THAT ARE DESIGNATED AS BEING PROVIDED WITH AN EMERGENCY PACK ARE TO BE PROVIDED WITH AN INTEGRAL AS2293 EMERGENCY PACK. THE FITTINGS ARE TO BE NON MAINTAINED WITH ALL LAMPS SWITCHED AS PER THE LIGHTING CONTROL FOR THAT SPACE UNLESS NOTED OTHERWISE. REFER TO THE SPECIFICATION FOR FURTHER DETAILS OF THE CONFIGURATION AND SWITCHING OF EMERGENCY LIGHTS.			A
ONE-WAY LIGHT SWITCH		ONE-WAY LIGHT SWITCH C/W CIRCUIT IDENTIFICATION ON THE FACEPLATE BEHIND THE SURROUND MOUNTED AT 1000mm AFFL UNLESS NOTED OTHERWISE.	WHITE	CLIPSAL C2000 SERIES 30USM	A



ELECTRICAL DESIGN GROUP

ELECTRICAL BUILDING SERVICES CONSULTANTS

P.O. Box 15, SHERWOOD Q. 4075

Phone: (07) 3278 4375 Fax: (07) 3716 0222

Web Site: www.edg.net.au Email: brisbane@edg.net.au

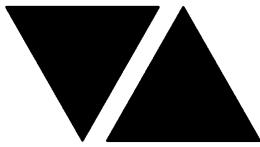
C3396a - LLEWELLYN MOTORS SPRINGFIELD - LOT 34

C3396a-0002(D).xls

ELECTRICAL EQUIPMENT SCHEDULE

REVISION D - 24 FEBRUARY 2025

THE EQUIPMENT SUPPLIER CONTACT DETAILS MAY BE AVAILABLE ON THE EDG WEBSITE VIA THE FOLLOWING LINK www.edg.net.au/links.html					
TYPE	LAMPS	DESCRIPTION	COLOUR / ACCESSORY	CATALOGUE No	REV
TWO-WAY LIGHT SWITCH		TWO-WAY LIGHT SWITCH C/W CIRCUIT IDENTIFICATION ON THE FACEPLATE BEHIND THE SURROUND MOUNTED AT 1100mm AFFL UNLESS NOTED OTHERWISE.	WHITE	CLIPSAL C2000 SERIES 30USM	A
PROXIMITY DETECTOR SWITCH (PD)		ADJUSTABLE FLUSH RECESSED 360 DEGREE PIR PRESENCE DETECTOR TO OPERATE THE ASSOCIATED LIGHTS FOR A PRE-SET AMOUNT OF TIME. ADJUST THE TIME AND SENSITIVITY ON SITE AS DIRECTED BY THE ENGINEER. SUBMIT DETAILS OF THE MOVEMENT DETECTOR SWITCH FOR APPROVAL PRIOR TO ORDERING	WHITE	CLIPSAL	D
SWITCH PANEL (SPA1)		CONTROL SWITCH PANEL TO BE PROVIDED AS PER THE CONTROL SCHEMATIC ENGRAVE THE USE OF EACH SWITCH WITH BLACK TEXT	STAINLESS STEEL	CLIPSAL B SERIES 30USM	A
SWITCH PANEL (SPA2)		CONTROL SWITCH PANEL TO BE PROVIDED AS PER THE CONTROL SCHEMATIC ENGRAVE THE USE OF EACH SWITCH WITH BLACK TEXT	STAINLESS STEEL	CLIPSAL B SERIES 30USM	A
SWITCH PANEL (SPA3)		CONTROL SWITCH PANEL TO BE PROVIDED AS PER THE CONTROL SCHEMATIC ENGRAVE THE USE OF EACH SWITCH WITH BLACK TEXT	STAINLESS STEEL	CLIPSAL B SERIES 30USM	A
SPECIAL PURPOSE POWER OUTLET		SPECIAL PURPOSE POWER OUTLET. MOUNT AT 300mm AFFL U.N.O. RATING 10A U.N.O. SIZE AND TYPE AS NOTED	-	-	B
SINGLE POWER OUTLET SUSPENDED (SUS)		SINGLE 10A POWER OUTLET SUSPENDED TO 1600 AFFL UNLESS NOTED OTHERWISE VIA A 3MM STAINLESS STEEL WIRE ROPE.	WHITE	CLIPSAL SS15	B
SINGLE POWER OUTLET		SINGLE POWER OUTLET C/W CIRCUIT IDENTIFICATION ON THE FACEPLATE BEHIND THE SURROUND MOUNT AT 300 AFFL U.N.O.	WHITE	CLIPSAL C2000 SERIES	A
DOUBLE POWER OUTLET		DOUBLE POWER OUTLET C/W CIRCUIT IDENTIFICATION ON THE FACEPLATE BEHIND THE SURROUND MOUNT AT 300 AFFL U.N.O.	WHITE	CLIPSAL C2000 SERIES	A
DOUBLE POWER OUTLET (USB)		DOUBLE POWER OUTLET C/W USB CHARGER AND CIRCUIT IDENTIFICATION ON THE FACEPLATE BEHIND THE SURROUND MOUNT AT 300mm AFFL U.N.O. RATING 10A U.N.O.	WHITE	CLIPSAL 2000 SERIES + 30USBCM MECH	A
SINGLE POWER OUTLET FOR THE AUTO DOOR (AD)		SINGLE 10 AMP POWER OUTLET C/W CIRCUIT IDENTIFICATION ON THE FACEPLATE BEHIND THE SURROUND MOUNTED WITHIN THE AUTO DOOR MULLION	WHITE	CLIPSAL C2000 SERIES	A



ELECTRICAL DESIGN GROUP

ELECTRICAL BUILDING SERVICES CONSULTANTS

P.O. Box 15, SHERWOOD Q. 4075

Phone: (07) 3278 4375 Fax: (07) 3716 0222

Web Site: www.edg.net.au Email: brisbane@edg.net.au

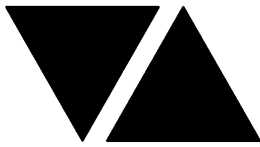
C3396a - LLEWELLYN MOTORS SPRINGFIELD - LOT 34

C3396a-0002(D).xls

ELECTRICAL EQUIPMENT SCHEDULE

REVISION D - 24 FEBRUARY 2025

THE EQUIPMENT SUPPLIER CONTACT DETAILS MAY BE AVAILABLE ON THE EDG WEBSITE VIA THE FOLLOWING LINK www.edg.net.au/links.html					
TYPE	LAMPS	DESCRIPTION	COLOUR / ACCESSORY	CATALOGUE No	REV
WEATHERPROOF POWER OUTLET (WP)		IP54 WEATHERPROOF SINGLE / DOUBLE POWER OUTLET AS NOTED ON DRAWING C/W COVER FLAP OVER SOCKET. MOUNT AT MINIMUM 1100mm AFFL U.N.O. RATING 10A U.N.O.	-	CLIPSAL WSCF227F	A
HAND DRYER CONNECTION (HD)		SINGLE POWER OUTLET C/W CIRCUIT IDENTIFICATION ON THE FACEPLATE BEHIND THE SURROUND FOR THE HAND DRYER MOUNT THE GPO AS PER THE HD DETAIL	WHITE UNLESS NOTED AS BLACK (BK)	CLIPSAL C2000 SERIES	A
SIGN CONNECTION		COORDINATE THE LOCATION AND CONNECTION WITH THE SIGN CONTRACTOR ENSURING THE GPO / ISOLATORS ARE PROVIDED WITH APPROPRIATE WEATHER PROTECTION AND ARE CONCEALED FROM VIEW.			A
SINGLE-PHASE ISOLATOR		SINGLE-PHASE WEATHERPROOF ISOLATOR. MOUNT AT 1350mm AFFL U.N.O. RATING 20A U.N.O. CONNECT TO EQUIPMENT VIA FLEXIBLE CONDUIT.	-	CLIPSAL WHT20	A
THREE-PHASE ISOLATOR		THREE-PHASE WEATHERPROOF ISOLATOR. MOUNT AT 1350mm AFFL U.N.O. RATING 20A U.N.O. CONNECT TO EQUIPMENT VIA FLEXIBLE CONDUIT. "RSD" DENOTES ROLLER SHUTTER DOOR SUPPLY - COORDINATE LOCATION ONSITE WITH MOTOR. "DOOR" DENOTES TILT DOOR SUPPLY - COORDINATE LOCATION ONSITE WITH MOTOR.	-	CLIPSAL WHT35	A
FLOOR BOX TYPE 1 (FB1)		INSITU FLUSH FLOOR BOX C/W A DOUBLE GPOS+ FACILITY FOR A COMMUNICATIONS OUTLETS FACEPLATE . PROVIDE A 32 DIA CONDUIT C/W A SPARE DRAW WIRE FROM THE REAR OF THE COMMUNICATIONS FACEPLATE TO THE CEILING SPACE ABOVE THE COMMUNICATIONS RACK CR-A. PROVIDE THE GPOS AS PER THE STANDARD DESCRIPTIONS.	STAINLESS STEEL	ECD FB2SHD	D
FLOOR BOX TYPE 2 (FB2)		INSITU FLUSH FLOOR BOX C/W A DOUBLE GPOS + FACILITY FOR A COMMUNICATIONS FACEPLATE . PROVIDE A 32 DIA CONDUIT C/W A SPARE DRAW WIRE FROM THE REAR OF THE COMMUNICATIONS FACEPLATE TO THE CEILING SPACE ABOVE THE COMMUNICATIONS RACK CR-A. PROVIDE THE GPOS AS PER THE STANDARD DESCRIPTIONS.	STAINLESS STEEL	ECD FB2SHD	D
FLOOR BOX TYPE 3 (FB3)		INSITU FLUSH FLOOR BOX C/W A DOUBLE GPOS + FACILITY FOR A COMMUNICATIONS FACEPLATE . PROVIDE A 32 DIA CONDUIT C/W A SPARE DRAW WIRE FROM THE REAR OF THE COMMUNICATIONS FACEPLATE TO THE CEILING SPACE ABOVE THE COMMUNICATIONS RACK CR-S. PROVIDE THE GPOS AS PER THE STANDARD DESCRIPTIONS.	STAINLESS STEEL	ECD FB2SHD	D
EV CHARGER (EVx)		CONNECT THE SUBMAIN TO THE EV CHARGER AS PER THE EV CHARGER INSTRUCTIONS			A



ELECTRICAL DESIGN GROUP

ELECTRICAL BUILDING SERVICES CONSULTANTS

P.O. Box 15, SHERWOOD Q. 4075

Phone: (07) 3278 4375 Fax: (07) 3716 0222

Web Site: www.edg.net.au Email: brisbane@edg.net.au

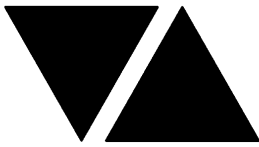
C3396a - LLEWELLYN MOTORS SPRINGFIELD - LOT 34

C3396a-0002(D).xls

ELECTRICAL EQUIPMENT SCHEDULE

REVISION D - 24 FEBRUARY 2025

THE EQUIPMENT SUPPLIER CONTACT DETAILS MAY BE AVAILABLE ON THE EDG WEBSITE VIA THE FOLLOWING LINK www.edg.net.au/links.html					
TYPE	LAMPS	DESCRIPTION	COLOUR / ACCESSORY	CATALOGUE No	REV
NBN PREMISE CONNECTION DEVICE (PCD)		NBN COMPLIANT PREMISES CONNECTION DEVICE AS PER THE PCD DETAIL TO BE CONNECTED TO THE NTD VIA AN NBN COMPLIANT DROP CONDUIT. CONNECT THE PCD TO THE TELSTRA PIT VIA AN NBN COMPLIANT LEAD-IN CONDUIT.			A
NBN NETWORK TERMINATION UNIT (NTD)		NBN COMPLIANT NETWORK TERMINATION UNIT TO BE PROVIDED IN ACCORDANCE WITH THE NBN REQUIREMENTS. CONNECT THE NBN NTD TO A DEDICATED PATCH PANEL WITHIN THE COMMUNICATIONS RACK VIA TWO CONCEALED CAT 6 RJ45 CABLES. THESE NTD CONNECTION CABLES ARE TO BE A DIFFERENT COLOUR TO THE REMAINING COMMUNICATIONS CABLES.			A
CAT 6 COMMUNICATIONS OUTLET		COMMUNICATIONS OUTLET BY THE TENANTS COMMUNICATIONS SPECIALIST.			D
COMMUNICATIONS RACK CR-B		COMMUNICATIONS RACK BY THE TENANTS COMMUNICATIONS SPECIALIST.			D
PIT A		PROVIDE PIT A AS PLASTIC PIT 450 X 450 INTERNALLY WITH A CLASS D LID WITH THE PIT LID FRAME CAST INTO THE CONCRETE DRIVE WAY. DRAIN THE PIT TO STORMWATER.			D
PIT B		PROVIDE PIT B AS PLASTIC PIT 450 X 450 INTERNALLY WITH A CLASS C LID WITH THE PIT LID FRAME CAST INTO THE CONCRETE DRIVE WAY. DRAIN THE PIT TO STORMWATER.			C
DB-A		BUILDING B DISTRIBUTION BOARD DB-A AS PER THE DB-B SCHEDULE AND NOTES. PROVIDE A SHOP DRAWING OF DB-B FOR APPROVAL.			A
MSB-A		BUILDING A MAIN SWITCHBOARD AS PER THE POWER SCHEMATIC AND THE NOTES. PROVIDE A SHOP DRAWING OF THE MAIN SWITCHBOARD FOR APPROVAL.			A
REVENUE METER (KWH)		NEM CODE COMPLIANT CT RETAIL METER INCLUDING ALL ASSOCIATED COMPONENTS			A
METERING TEST BLOCK METER (MTB)		QECM V4 COMPLIANT METERING TEST BLOCK INCLUDING ALL ASSOCIATED COMPONENTS			A
NETWORK DEVICE (ND)		NO LONGER REQUIRED			C
DEMAND METER (DM)		ELECTRIC VEHICLE CHARGING DEMAND MANAGEMENT SYSTEM CURRENT TRANSFORMER			C
ELECTRIC VEHICLE CHARGING ISOLATION SWITCH (CIS)		ELECTRIC VEHICLE CHARGING ISOLATION SWITCH PUSH BUTTON WIRED TO THE EV CHARGER SUPPLY CIRCUIT BREAKER SHUNT TRIP TO ISOLATE THE POWER TO THE ELECTRIC VEHICLE CHARGERS. MOUNTED AT 1800mm AFFL UNLESS NOTED OTHERWISE. PROVIDE COLOURED ENGRAVED TEXT AS PER HTE CIS ELEVATION.	WHITE	CLIPSAL C2000 SERIES 30USM	C



ELECTRICAL DESIGN GROUP

ELECTRICAL BUILDING SERVICES CONSULTANTS

P.O. Box 15, SHERWOOD Q. 4075

Phone: (07) 3278 4375 Fax: (07) 3716 0222

Web Site: www.edg.net.au Email: brisbane@edg.net.au

C3396a - LLEWELLYN MOTORS SPRINGFIELD - LOT 34

C3396a-0002(D).xls

ELECTRICAL EQUIPMENT SCHEDULE

REVISION D - 24 FEBRUARY 2025

THE EQUIPMENT SUPPLIER CONTACT DETAILS MAY BE AVAILABLE ON THE EDG WEBSITE VIA THE FOLLOWING LINK www.edg.net.au/links.html					
TYPE	LAMPS	DESCRIPTION	COLOUR / ACCESSORY	CATALOGUE No	REV
CONTACTOR (Cx)		EV CONTROL LOAD BREAK CONTACTOR RATED ABOVE THE CIRCUIT BREAKER FAME SIZE			A
GENERATION SIGNALLING DEVICE (GSD)		QECM V4 COMPLIANT GENERATION SIGNALLING DEVICE INCLUDING ALL ASSOCIATED COMPONENTS			A
DEMAND RESPONSE SITE CONTROLLER (DRSC)		QECM V4 COMPLIANT DEMAND RESPONSE SITE CONTROLLER INCLUDING ALL ASSOCIATED COMPONENTS			A
MANUAL TRANSFER SWITCH (MTS)		MECHANICALLY INTERLOCKED MANUAL TRANSFER SWITCH.			C
MSSB -A		BUILDING A MECHANICAL SERVICES SWITCHBOARD PROVIDED BY THE MECHANICAL SUB CONTRACTOR. COORDINATE THE SUBMAIN CONNECTION WITH THE MECHANICAL SUB CONTRACTOR ON SITE.			A
CHANNEL Ax		CONTROL CHANNEL WITH A NUMERICAL REFERENCE. REFER TO THE POWER AND LIGHTING CONTROL SCHEMATIC			A
CABLE TRAY		GALVANIZED CABLE TRAY SIZED AS INDICATED COMPLIANT WITH AS1170.4			A
SECURITY EQUIPMENT		SECURITY EQUIPMENT BY THE TENANTS SPECIALIST SECURITY CONTRACTOR			D
PV INVERTER (INV-A)		33KW IP 66 3 PHASE PV INVERTER C/W 5 YEAR REPLACEMENT WARRANTY CONNECTED TO THE PV PANELS. REFER TO THE NOTES FOR ADDITIONAL REQUIREMENTS. PROVIDE DETAILS OF THE PV SYSTEM AND DESIGN FOR APPROVAL. CONNECT THE INVERTER TO THE ENERGEX GENERATION SIGNALLING DEVICE / DEMAND RESPONSE SITE CONTROLLER AS PER THE QECM V4			A
PV PANELS		33KW OF PV PANELS C/W GALVANIZED MOUNTING BRACKET. PROVIDE PV PANELS WITH A 10 YEAR PRODUCT WARRANTY AND A 25 YEAR PANEL PERFORMANCE WARRANTY. REFER TO THE NOTES FOR ADDITIONAL REQUIREMENTS.			A



ELECTRICAL DESIGN GROUP

ELECTRICAL BUILDING SERVICES CONSULTANTS

P.O. Box 15, SHERWOOD Q. 4075

Phone: (07) 3278 4375

Website: www.edg.net.au Email: brisbane@edg.net.au

C3396a - LLEWELLYN MOTORS SPRINGFIELD - LOT 34

C3396a-0004(A).xls

DISTRIBUTION BOARD DB-A (LOWER GROUND)

REVISION A - 07 NOVEMBER 2024

							REV	
FAULT CURRENT:		6KA USING CASCADING			MAIN SWITCH:		250A NON AUTO LOAD BREAK	A
CHASSIS SIZE:		2 X 96 POLE			SUPPLIED FROM:		MSB	A
CHASSIS RATING:		250A			SUPPLY CABLE:		4C70	A
PHASES:		3						A
PROVIDE THE DB WITH A FULL WIDTH EMPTY DIN RAIL TO ACCOMMODATE FUTURE CONTACTORS AND CONTROLS. PROVIDE THE DB WITH AN AS2293 EMERGENCY LIGHTING CONTROL SYSTEM TO CONTROL THE ASSOCIATED EMERGENCY LIGHTS. PROVIDE THE DB WITH SURGE PROTECTION. EACH CUBICAL MUST BE 800 WIDE. REFER TO THE NOTES FOR ADDITIONAL REQUIREMENTS								A
CIRC	PH	CIRCUIT BREAKER (amps)	CONTROL EQUIPMENT	CABLE SIZE (mm ²)	LOCATION	CIRCUIT USE		
P1	3	40	RCD TYPE B	6.0		LIFT	A	
P2	3	40		6.0		COMPRESSOR	A	
P3	3	32	RCBO	4.0		3-PHASE OUTLET	A	
P4	3	32	RCBO	4.0		3-PHASE OUTLET	A	
P5	3	32	RCBO	4.0		3-PHASE OUTLET	A	
P6	3	32	RCBO	4.0		3-PHASE OUTLET	A	
P7	3	20	RCBO	2.5		HOIST	A	
P8	3	20	RCBO	2.5		HOIST	A	
P9	3	20	RCBO	2.5		HOIST	A	
P10	3	20	RCBO	2.5		HOIST	A	
P11	1	20	RCBO	2.5			A	
P12	1	20	RCBO	2.5			A	
P13	1	20	RCBO	2.5			A	
P14	1	20	RCBO	2.5			A	
P15	1	20	RCBO	2.5			A	
P16	1	20	RCBO	2.5			A	
P17	1	20	RCBO	2.5			A	
P18	1	20	RCBO	2.5			A	
P19	1	20	RCBO	2.5			A	
P20	1	20	RCBO	2.5			A	
P21	1	20	RCBO	2.5			A	
P22	1	20	RCBO	2.5			A	
P23	1	20	RCBO	2.5			A	
P24	1	20	RCBO	2.5			A	
P25	1	20	RCBO	2.5			A	
P26	1	20	RCBO	2.5			A	
P27	1	20	RCBO	2.5			A	
P28	1	20	RCBO	2.5			A	
P29	1	20	RCBO	2.5			A	
P30	1	20	RCBO	2.5			A	
P31	1	20	RCBO	2.5			A	
P32	1	20	RCBO	2.5			A	
P33	1	20	RCBO	2.5			A	
P34	1	20	RCBO	2.5			A	
P35	1	20	RCBO	2.5			A	
P36	1	20	RCBO	2.5			A	
P37	1	20	RCBO	2.5			A	
P38	1	20	RCBO	2.5			A	
P39	1	20	RCBO	2.5			A	
P40	1	20	RCBO	2.5			A	
P41	1	20	RCBO	2.5			A	
P42	1	20	RCBO	2.5			A	
P43	1	20	RCBO	2.5			A	
P44	1	20	RCBO	2.5			A	
P45	1	20	RCBO	2.5			A	
P46	1	20	RCBO	2.5			A	
P47	1	20	RCBO	2.5			A	

C3396a-0004(A).xls

Pages inc. any attach. 1 of 3



ELECTRICAL DESIGN GROUP

ELECTRICAL BUILDING SERVICES CONSULTANTS

P.O. Box 15, SHERWOOD Q. 4075

Phone: (07) 3278 4375

Website: www.edg.net.au Email: brisbane@edg.net.au

C3396a - LLEWELLYN MOTORS SPRINGFIELD - LOT 34

C3396a-0004(A).xls

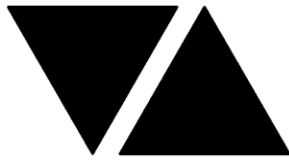
DISTRIBUTION BOARD DB-A (LOWER GROUND)

REVISION A - 07 NOVEMBER 2024

							REV	
FAULT CURRENT:		6KA USING CASCADING			MAIN SWITCH:		250A NON AUTO LOAD BREAK	A
CHASSIS SIZE:		2 X 96 POLE			SUPPLIED FROM:		MSB	A
CHASSIS RATING:		250A			SUPPLY CABLE:		4C70	A
PHASES:		3						A
PROVIDE THE DB WITH A FULL WIDTH EMPTY DIN RAIL TO ACCOMMODATE FUTURE CONTACTORS AND CONTROLS. PROVIDE THE DB WITH AN AS2293 EMERGENCY LIGHTING CONTROL SYSTEM TO CONTROL THE ASSOCIATED EMERGENCY LIGHTS. PROVIDE THE DB WITH SURGE PROTECTION. EACH CUBICAL MUST BE 800 WIDE. REFER TO THE NOTES FOR ADDITIONAL REQUIREMENTS								A
CIRC	PH	CIRCUIT BREAKER (amps)	CONTROL EQUIPMENT	CABLE SIZE (mm ²)	LOCATION	CIRCUIT USE		
P48	1	20	RCBO	2.5			A	
P49	1	20	RCBO	2.5			A	
P50	1	20	RCBO	2.5			A	
P51	1	20	RCBO	2.5			A	
P52	1	20	RCBO	2.5			A	
P53	1	20	RCBO	2.5			A	
P54	1	20	RCBO	2.5			A	
P55	1	20	RCBO	2.5			A	
P56	1	20	RCBO	2.5			A	
P57	1	20	RCBO	2.5			A	
P58	1	20	RCBO	2.5			A	
P59	1	20	RCBO	2.5			A	
P60	1	20	RCBO	2.5			A	
P61	1	20	RCBO	2.5			A	
P62	1	20	RCBO	2.5			A	
P63	1	20	RCBO	2.5			A	
P64	1	20	RCBO	2.5			A	
P65	1	20	RCBO	2.5			A	
P66	1	20	RCBO	2.5			A	
P67	1	20	RCBO	2.5			A	
P68	1	20	RCBO	2.5			A	
P69	1	20	RCBO	2.5			A	
P70	1	20	RCBO	2.5			A	
P71	1	20	RCBO	2.5			A	
P72	1	20	RCBO	2.5			A	
P73	1	20	RCBO	2.5			A	
P74	1	20	RCBO	2.5			A	
P75	1	20	RCBO	2.5			A	
L1	1	20	RCBO PE CELL ON DUSK OFF DAWN	2.5			A	
L2	1	20	RCBO PE CELL ON DUSK OFF DAWN	2.5			A	
L3	1	20	RCBO PE CELL ON DUSK OFF DAWN	2.5			A	
L4	1	20	RCBO PE CELL ON DUSK OFF DAWN	2.5			A	
L5	1	20	RCBO PE CELL ON DUSK OFF DAWN	2.5			A	
L6	1	20	RCBO PE CELL ON DUSK OFF DAWN	2.5			A	
L7	1	20	RCBO PE CELL ON DUSK OFF DAWN	2.5			A	
L8	1	20	RCBO PE CELL ON DUSK OFF DAWN	2.5			A	
L9	1	20	RCBO PE CELL ON DUSK OFF DAWN	2.5			A	

C3396a-0004(A).xls

Pages inc. any attach. 2 of 3



ELECTRICAL DESIGN GROUP

ELECTRICAL BUILDING SERVICES CONSULTANTS

P.O. Box 15, SHERWOOD Q. 4075

Phone: (07) 3278 4375

Website: www.edg.net.au Email: brisbane@edg.net.au

C3396a - LLEWELLYN MOTORS SPRINGFIELD - LOT 34

C3396a-0004(A).xls

DISTRIBUTION BOARD DB-A (LOWER GROUND)

REVISION A - 07 NOVEMBER 2024

							REV	
FAULT CURRENT:		6KA USING CASCADING			MAIN SWITCH:		250A NON AUTO LOAD BREAK	A
CHASSIS SIZE:		2 X 96 POLE			SUPPLIED FROM:		MSB	A
CHASSIS RATING:		250A			SUPPLY CABLE:		4C70	A
PHASES:		3						A
PROVIDE THE DB WITH A FULL WIDTH EMPTY DIN RAIL TO ACCOMMODATE FUTURE CONTACTORS AND CONTROLS. PROVIDE THE DB WITH AN AS2293 EMERGENCY LIGHTING CONTROL SYSTEM TO CONTROL THE ASSOCIATED EMERGENCY LIGHTS. PROVIDE THE DB WITH SURGE PROTECTION. EACH CUBICAL MUST BE 800 WIDE. REFER TO THE NOTES FOR ADDITIONAL REQUIREMENTS								A
CIRC	PH	CIRCUIT BREAKER (amps)	CONTROL EQUIPMENT	CABLE SIZE (mm ²)	LOCATION	CIRCUIT USE		
L10	1	20	RCBO PE CELL ON DUSK OFF DAWN	2.5			A	
L11	1	20	RCBO	2.5			A	
L12	1	20	RCBO	2.5			A	
L13	1	20	RCBO	2.5			A	
L14	1	20	RCBO	2.5			A	
L15	1	20	RCBO	2.5			A	
L16	1	20	RCBO	2.5			A	
L17	1	20	RCBO	2.5			A	
L18	1	20	RCBO	2.5			A	
L19	1	20	RCBO	2.5			A	
L20	1	20	RCBO	2.5			A	
L21	1	20	RCBO	2.5			A	
L22	1	20	RCBO	2.5			A	
L23	1	20	RCBO	2.5			A	
L24	1	20	RCBO	2.5			A	
L25	1	20	RCBO	2.5			A	
L26	1	20	RCBO	2.5			A	
L27	1	20	RCBO	2.5			A	
L28	1	20	RCBO	2.5			A	
L29	1	20	RCBO	2.5			A	
L30	1	20	RCBO	2.5			A	
L31	1	20	RCBO	2.5			A	
L32	1	20	RCBO	2.5			A	
L33	1	20	RCBO	2.5			A	
L34	1	20	RCBO	2.5			A	
L35	1	20	RCBO	2.5			A	
L36	1	20	RCBO	2.5			A	
L37	1	20	RCBO	2.5			A	
L38	1	20	RCBO	2.5			A	
L39	1	20	RCBO	2.5			A	
L40	1	20	RCBO	2.5			A	
L41	1	20	RCBO	2.5			A	
L42	1	20	RCBO	2.5			A	
L43	1	20	RCBO	2.5			A	
L44	1	20	RCBO	2.5			A	
L45	1	20	RCBO	2.5			A	
L46	1	20	RCBO	2.5			A	
L47	1	20	RCBO	2.5			A	
L48	1	20	RCBO	2.5			A	

LEGEND

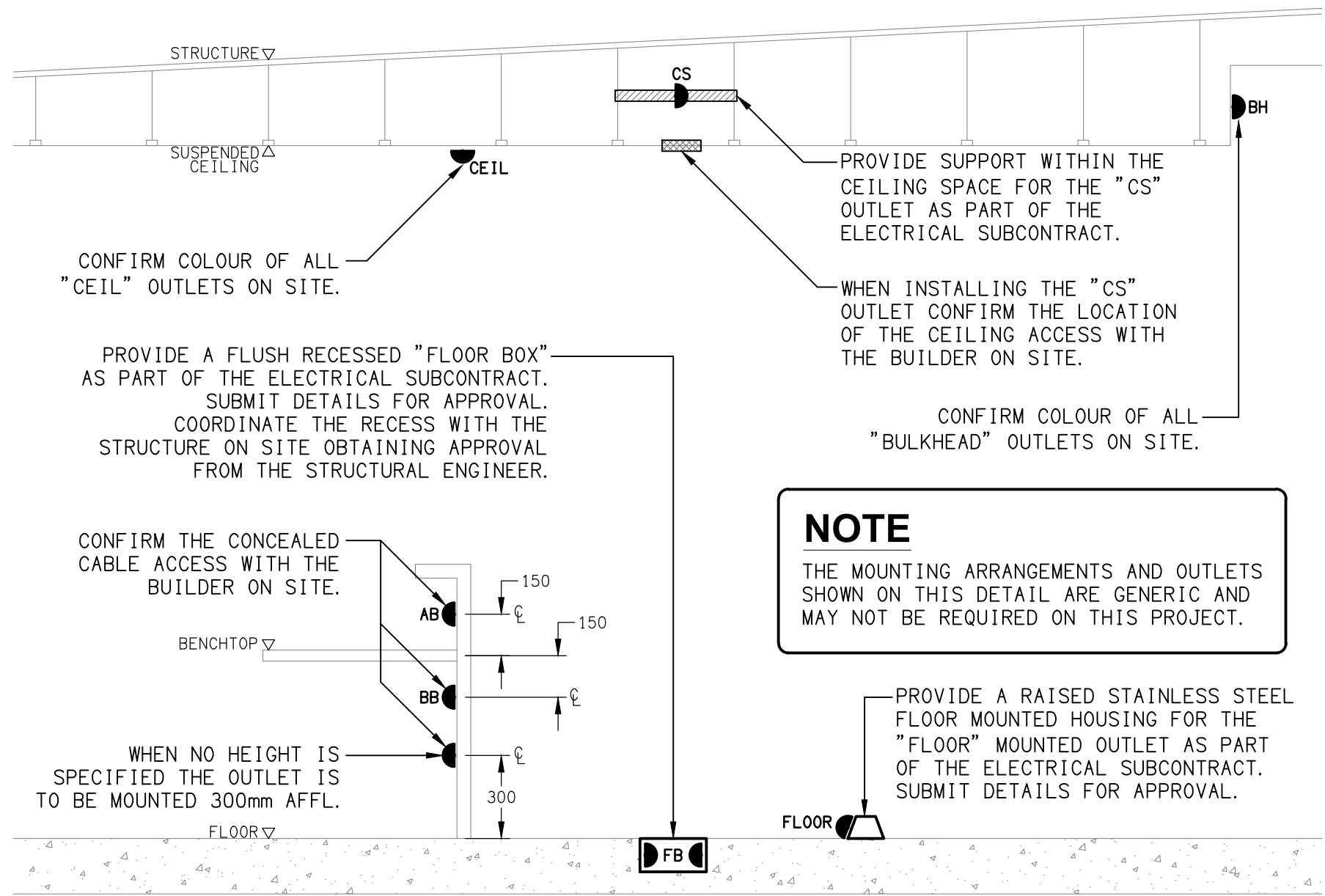
	ELECTRICAL SERVICES SWITCHBOARD.
	SWITCHBOARD / CONTROL PANEL NOT PROVIDED AS PART OF THE ELECTRICAL SUBCONTRACT.
	SINGLE POWER OUTLET.
	DOUBLE POWER OUTLET.
	DOUBLE POWER OUTLET C/W INTEGRAL USB CHARGERS.
	SPECIAL PURPOSE POWER OUTLET.
	SIGN OUTLET / CONNECTION.
	SINGLE PHASE ISOLATOR.
	THREE PHASE ISOLATOR.
	JUNCTION BOX.
	CONDUIT ROUTE.
	CABLE TRAY AS NOTED.
	ELECTRICAL PIT, TYPE AS NOTED.
	TELSTRA PIT.
	ELECTRICAL FLOOR BOX, TYPE AS NOTED.
	HAND DRYER CONNECTION.
	LIGHTING CONTROL SWITCH PANEL, TYPE AS NOTED.
	ONE-WAY LIGHT SWITCH.
	TWO-WAY LIGHT SWITCH.
	OCCUPANCY PRESENCE DETECTOR SWITCH.
	CIRCUIT LINE.
	SWITCH LINE.
	POWER CIRCUIT DESIGNATION. DENOTES DB AND CIRCUIT.
	LIGHTING CONTROL CHANNEL REFERENCE.
	MAIN DISTRIBUTION FRAME.
	ELECTRICAL EQUIPMENT AS NOTED.
	NBN NETWORK TERMINATION DEVICE.
	NBN PREMISES CONNECTION DEVICE.
	SUPPLY AUTHORITY CODE COMPLIANT LV MAXIMUM DEMAND TARIFF METER.
	METERING TEST BLOCK METER.
	CONTACTOR.
	GENERATION SIGNALLING DEVICE.
	DEMAND RESPONSE SITE CONTROLLER.
	MANUAL TRANSFER SWITCH.
	MAXIMUM DEMAND EV CTs.
	ELECTRIC VEHICLE CHARGING ISOLATION SWITCH.

LEGEND

	CIRCUIT BREAKER C/W SHORT TRIP.
	FUSE.
	SINGLE PHASE.
	THREE PHASE.
	CURRENT TRANSFORMER C/W REMOVABLE LINK.
	FUSE LINK.
	COMBINED FUSE SWITCH.
	CIRCUIT BREAKER.
	ISOLATOR.
	RESIDUAL CURRENT DEVICE.
	CONTACTOR - NORMALLY OPEN.
	CONTACTOR - NORMALLY CLOSED.
	REFER TO DETAIL NOTED FOR THE AREA SHOWN HATCHED. ADDITIONAL OUTLETS & FITTINGS MAY BE SHOWN ON DETAIL.
	E1: GENERAL LED EMERGENCY LIGHT.
	EX: EMERGENCY LED EXIT LIGHT.
	Lx: LIGHT FITTING C/W NON-MAINTAINED EMERGENCY BATTERY PACK. TYPE AS NOTED.
	L1: OVERHEAD CUPBOARD LED STRIP LIGHT.
	L2: 600 x 600 RECESSED T-BAR FLAT PLATE.
	L3: 600 x 600 RECESSED FLAT PLATE.
	L4: AMENITY RECESSED DOWNLIGHT.
	L5: RECESSED DOWNLIGHT.
	L6: RECESSED DOWNLIGHT.
	L7: RECESSED DOWNLIGHT.
	L8: RECESSED DOWNLIGHT.
	L9: RECESSED DOWNLIGHT.
	L10: 150W SUSPENDED HIGH BAY FITTING.
	L11: 1200 LONG IP65 BATTEN C/W EMERGENCY PACK.
	L12: SURFACE MOUNTED CAR PARK LIGHT C/W MOVEMENT SENSOR.
	L13: 3800 LONG RECESSED EXTRUSION FITTING.
	L14: 1200 LONG IP65 SURFACE MOUNTED BATTEN C/W MOVEMENT SENSOR.
	L15: 1200 LONG IP65 SURFACE MOUNTED BATTEN.
	L16: WALL MOUNTED CARPARK LIGHT.
	L17: 50W CARPARK LIGHT ON A 9m HIGH POLE.
	L18: 150W CARPARK LIGHT ON A 9m HIGH POLE.
	L19: 200W SUSPENDED HIGH BAY FITTING.
	L23: 100W CARPARK LIGHT ON A 9m HIGH POLE.
	L24: 2 x 50W CARPARK LIGHTS ON A 9m HIGH POLE.
	L25: 1200 LONG BATTEN C/W LOCAL MANUAL SWITCH.

NOTE

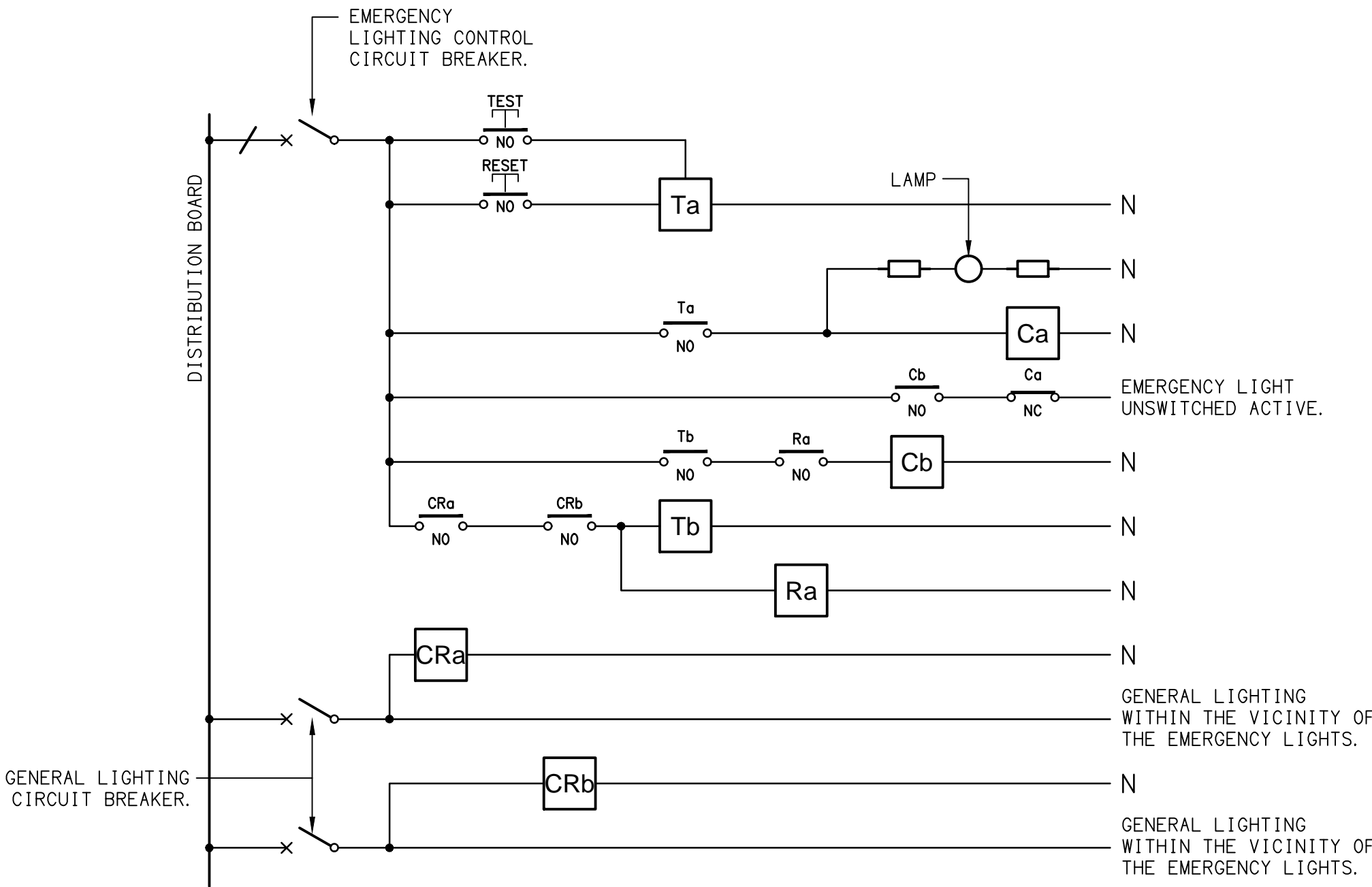
ALL ELECTRICAL PENETRATIONS THROUGH THE ROOF SHEETING ARE TO BE IN LINE WITH THE STRUCTURAL OR MECHANICAL SERVICES PENETRATIONS TO AVOID DEDICATED FLASHINGS FOR THE ELECTRICAL SERVICES.



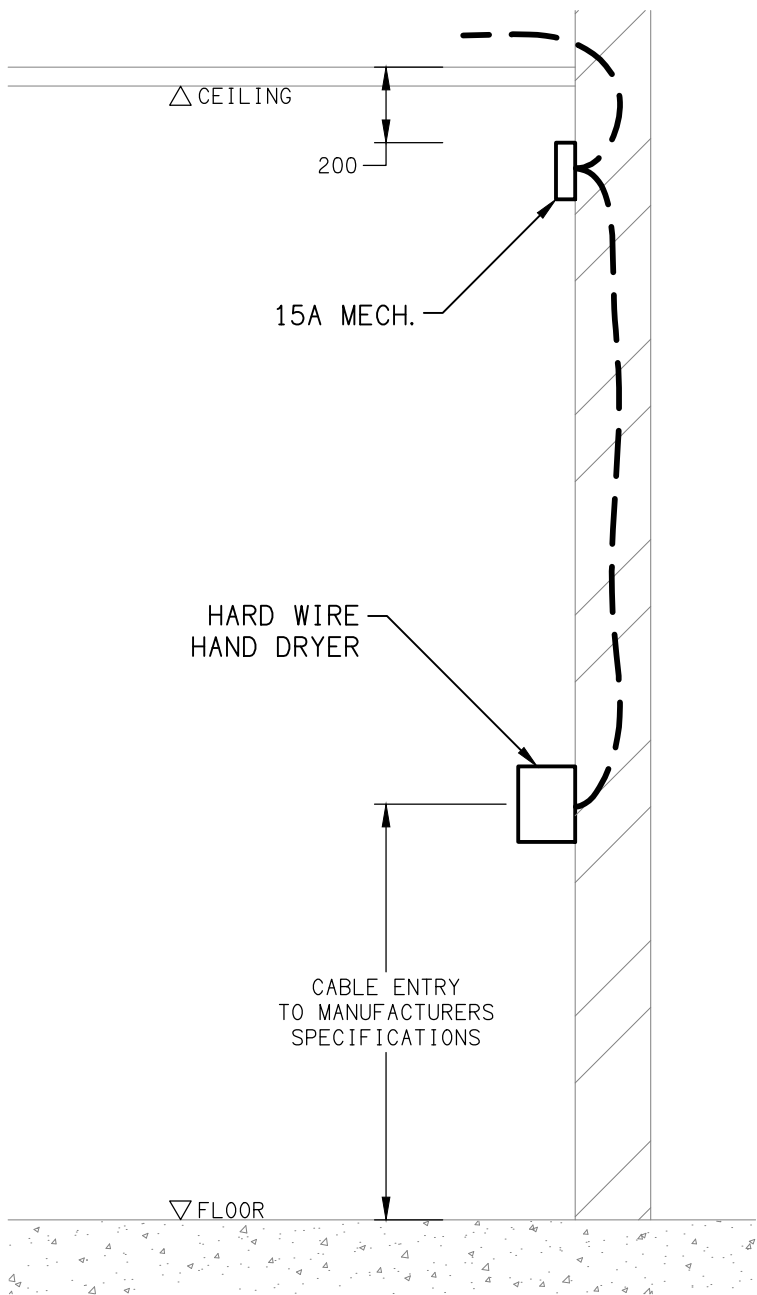
DETAIL
TYPICAL OUTLET MOUNTINGS
NOT TO SCALE

EQUIPMENT:

- TEST - TEST PUSH BUTTON MOUNTED ON THE DISTRIBUTION BOARD ESCUTCHEON.
RESET - RESET PUSH BUTTON MOUNTED ON THE DISTRIBUTION BOARD ESCUTCHEON.
LAMP - AMBER TEST INDICATING LAMP MOUNTED ON THE DISTRIBUTION BOARD ESCUTCHEON.
Ta - ADJUSTABLE 0-3 HOUR TIMED RELAY.
Tb - 15 MINUTE RUN-ON TIMER TO OPERATE UPON THE RETURN OF MAINS POWER.
Cx - CONTACTOR x.
CRx - CONTROL RELAY x.
Rx - RELAY x.



SCHEMATIC
EMERGENCY LIGHTING
NOT TO SCALE



DETAIL
HAND DRYER CONNECTION
NOT TO SCALE

NOTES

- THE EMERGENCY LIGHT UNSWITCHED ACTIVE / GENERAL LIGHTING SWITCHED ACTIVE CIRCUIT ARRANGEMENT AND CONTROL IS TYPICAL FOR ALL CIRCUITS SUPPLYING EMERGENCY LIGHTS.
- PROVIDE ADDITIONAL CONTROL RELAYS (CRx) CONFIGURED AS PER CRa AND CRb FOR ALL ADDITIONAL LIGHTING CIRCUITS THAT SUPPLY LIGHTS IN THE VICINITY OF THE EMERGENCY LIGHTS.

NOTES

1. EXTENT OF WORKS

THE ELECTRICAL SERVICES SUB-CONTRACT INCLUDES BUT IS NOT LIMITED TO THE FOLLOWING:

- SUPPLY AND INSTALLATION OF ALL COMPONENTS FORMING PART OF THE ELECTRICAL SERVICES.
- CO-ORDINATION.
- INSPECTIONS.
- TESTING AND COMMISSIONING.
- MAINTENANCE.
- AS BUILT DRAWINGS.
- OPERATION AND MAINTENANCE MANUAL.
- CABLING, CABLE SUPPORT SYSTEMS AND ACCESS.
- POWER DISTRIBUTION.
- LIGHTING.
- TELECOMMUNICATIONS SERVICE.
- ALL MINOR COMPONENTS AND INCIDENTAL WORKS NOT SPECIFICALLY REFERRED TO, HOWEVER NECESSARY TO COMPLETE THE ELECTRICAL SERVICES INSTALLATION SUCH THAT IT IS HANDED OVER COMPLETE, OPERATIONAL AND FIT FOR THE INTENDED USE.

SUPPLY ALL LABOUR, MATERIALS, EQUIPMENT, AND ALL OTHER ITEMS, WHETHER MENTIONED IN DETAIL OR NOT, REQUIRED FOR THE SATISFACTORY COMPLETION OF THE ELECTRICAL SERVICES INSTALLATION, LEAVING IN FULL WORKING ORDER TO THE SATISFACTION OF THE PROJECT MANAGER.

SUPPLY ALL LABOUR, MATERIALS, EQUIPMENT, AND ALL OTHER ITEMS, WHETHER MENTIONED IN DETAIL OR NOT, REQUIRED FOR THE SATISFACTORY COMPLETION OF THE ELECTRICAL SERVICES INSTALLATION, LEAVING IN FULL WORKING ORDER TO THE SATISFACTION OF THE PROJECT MANAGER.

ACCEPT FULL RESPONSIBILITY FOR LIASING, ARRANGING AND CO-ORDINATION OF ALL WORKS THAT HAVE AN EFFECT ON OR WILL BE AFFECTED BY THE ELECTRICAL SERVICES.

2. WORKMANSHIP

ENSURE THAT THE ELECTRICAL WORK IS PERFORMED BY THE HOLDER OF A CURRENT ELECTRICAL SUB CONTRACTOR LICENSE AND THE SERVICES COVERED BY THE ACMA IS PERFORMED BY THE HOLDER OF THE APPROPRIATE CURRENT ACMA LICENSE. ENSURE THE INSTALLATION AND ALL COMPONENTS, FIXTURES, FITTINGS, OUTLETS AND CABLES ARE SUPPLIED AND INSTALLED TO A HIGH STANDARD THROUGHOUT, AND INSTALLED IN A NEAT AND TRADESMAN LIKE MANNER, TO THE CURRENT INDUSTRY STANDARDS. ENSURE ALL MATERIALS AND COMPONENTS OF A SIMILAR TYPE ARE OF THE SAME MANUFACTURER AND INSTALLED IN A UNIFORM MANNER.

IT IS THE ELECTRICAL SUB CONTRACTOR'S RESPONSIBILITY TO ENSURE THAT THE INSTALLATION IS FIT FOR PURPOSE AND IS PROVIDED AS A COMPLETE WORKING INSTALLATION. IT IS THE ELECTRICAL SUB CONTRACTOR'S RESPONSIBILITY TO PROVIDE ALL COMPONENTS, FITTINGS, FIXTURES, SYSTEMS, PROGRAMMING ETC IRRESPECTIVE OF THE LEVEL DETAILED IN THE DOCUMENTS SUCH THAT THE INSTALLATION IS PROVIDED AS A COMPLETE WORKING INSTALLATION.

CONCEAL ALL WIRING AND CONDUITS. EXPOSED CABLING OR CONDUITS ARE GENERALLY NOT ACCEPTABLE. IT IS NOTED THAT CHASING AND REINSTATEMENT WILL BE REQUIRED. ENSURE ALL COMPONENTS, EQUIPMENT AND MATERIALS SUPPLIED ARE NEW, UNUSED, DESIGNED AND SELECTED TO ENSURE SATISFACTORY OPERATION UNDER VARYING ATMOSPHERIC, CLIMATIC, HUMID TROPICAL CONDITIONS WITHOUT DISTORTION AND DETERIORATION IN ANY PART AFFECTING EFFICIENCY AND RELIABILITY OF THE SYSTEMS. DESIGN AND SELECT ALL EQUIPMENT TO PROVIDE THE NECESSARY SAFETY TO HUMAN LIFE AND PROPERTY DURING OPERATION AND MAINTENANCE WITH PARTICULAR ATTENTION GIVEN TO ELECTRICAL SAFETY AND SEGREGATION PRECAUTIONS.

CHECK THE FINISHED PAINTWORK AROUND THE AREA OF EACH INSTALLATION AND TOUCH UP ALL DAMAGED PARTS AND FINISHES AFTER THE INSTALLATION OF THE ELECTRICAL SERVICES.

ALL WORKS ARE TO BE CARRIED OUT IN ACCORDANCE WITH THE BUILDER'S PROGRAM. ENSURE ALL FINAL LOCATIONS OF OUTLETS AND FITTINGS ARE CO-ORDINATED ONSITE WITH THE ARCHITECT AND ALL OTHER SERVICES, TO THE APPROVAL OF THE PROJECT MANAGER. ALLOW TO CO-ORDINATE THE FINAL LOCATION OF ALL EQUIPMENT, FITTINGS, & OUTLETS, SUCH THAT THEY ARE INSTALLED IN ACCORDANCE WITH THE AS3000 RESTRICTED ZONES, AND ARE NOT COVERED INAPPROPRIATELY.

ENSURE THAT ALL METAL SURFACES ARE SUITABLY PROTECTED AGAINST CORROSION, AND THAT ALL PLASTIC MATERIALS ARE UV STABILISED.

PROVIDE ALL MATERIALS AS NEW, AND OF THE HIGHEST CLASS AVAILABLE FOR THEIR RESPECTIVE TYPES. ENSURE ALL ASPECTS OF THE WORK ARE OF A HIGH STANDARD THROUGHOUT, AND INSTALLED IN A NEAT AND TRADESMAN LIKE MANNER, TO THE CURRENT INDUSTRY STANDARDS.

IRRESPECTIVE OF INFORMATION CONTAINED IN THE ELECTRICAL SERVICES DOCUMENTS OR IN INSTRUCTIONS, IT IS THE ELECTRICAL SUB CONTRACTOR'S RESPONSIBILITY TO ENSURE ALL ELECTRICAL SERVICES WORKS ARE INSTALLED IN ACCORDANCE WITH THE REQUIREMENTS OF THE FOLLOWING. REFER ANY DISCREPANCIES BETWEEN THE REQUIREMENTS OF THE FOLLOWING AND/OR THE ELECTRICAL SERVICES DOCUMENTS AND INSTRUCTIONS TO THE ARCHITECT FOR CLARIFICATION PRIOR TO THE PLACING OF ORDERS, FABRICATION OR INSTALLATION OF THE ITEMS/METHODS IN DISCREPANCY.

- NCC BUILDING CODE OF AUSTRALIA.
- ELECTRICITY ACT.
- ELECTRICAL SAFETY ACT.
- ENERGEX REQUIREMENTS.
- THE QUEENSLAND ELECTRICITY CONNECTION MANUAL V4 (QECM) AND THE NATIONAL ELECTRICITY METERING STANDARDS (NEM).
- AS/NZS3000.
- AS3008.
- LOCAL BRIGADE.
- WORKPLACE HEALTH AND SAFETY ACT.
- TELECOMMUNICATIONS ACT.
- ACMA REQUIREMENTS.

3. AUTHORITIES

ENSURE ALL OF THE ELECTRICAL SERVICES COMPLY WITH THE REQUIREMENTS OF ALL REGULATORY AUTHORITIES HAVING JURISDICTION OVER THE SITE INCLUDING BUT NOT LIMITED TO THE FOLLOWING:

- ACMA.
- LOCAL COUNCIL.
- ENERGEX.
- STATE GOVERNMENT DEPARTMENT OF ENVIRONMENT AND HERITAGE.
- QLD GOVERNMENT, DIVISION OF WORKPLACE, HEALTH AND SAFETY.
- QLD FIRE AND EMERGENCY SERVICES.

NOTES

4. CABLES

UNLESS OTHERWISE SPECIFIED, INSTALL AND TERMINATE CABLES IN ACCORDANCE WITH THE MANUFACTURERS' RECOMMENDATIONS. DETERMINE THE FINAL ROUTES TO SUIT THE BUILDING STRUCTURE AND SITE CONDITIONS. UNLESS NOTED OTHERWISE, PROVIDE ALL 240 VOLT POWER AND LIGHTING WIRING AS 2.5mm² TWIN & EARTH STRANDED COPPER CONDUCTORS, PVC INSULATED 0.6/1kV V75 GRADE TO AS3174, PROTECTED BY A 20 AMP CIRCUIT BREAKER. ALL CONDUIT AND FITTINGS TO BE RIGID UPVC TO AS2053, UNLESS NOTED OTHERWISE.

5. POWER DISTRIBUTION

PROVIDE ENERGEX CONDUITS ALONG THE FOOTPATH BOUNDARY.

PROVIDE CONSUMERS MAINS FROM THE SUBSTATION ON THE ADJACENT LOT 32 TO THE MAIN SWITCHBOARD.

PROVIDE THE SITE MAIN SWITCHBOARD (MSB) AS FOLLOWS:

- PLINTH MOUNTED.
- NATIONAL ELECTRICITY MARKET (NEM) COMPLIANT RETAIL METERING.
- PROVIDE A COPY OF THE ENERGEX APPROVAL OF THE MSB.
- IP66 FORM 2A
- 316 STAINLESS STEEL OR ALUMINIUM ENCLOSURE, DOORS AND ESCUTCHEONS.
- CUSTOM COLOUR POWDER COATED ENCLOSURE AND DOORS WITH THE ARCHITECT NOMINATING THE COLOUR.
- POWDER COATED GLOSS WHITE ESCUTCHEONS.
- ENSURE THE MSB IS DESIGNED TO OPERATE IN DIRECT SUNLIGHT WITH AN AMBIENT TEMPERATURE OF 45 DEGREES.
- DOORS ON ALL CUBICLES WITH 3 POINT 92268 KEY LOCKABLE FLUSH HANDLES OTHER THAN THE METER CUBICAL DOOR WHICH IS TO HAVE AN ENERGEX PADLOCK.
- LIFT OFF HINGES ON ALL DOORS AND ESCUTCHEONS.
- 1/4 TURN LATCHES AND D HANDLES ON ALL ESCUTCHEONS.
- ALL SWITCHGEAR TO BE SCHNEIDER OR NHP/ TERASAKI.
- PROVIDE SHOP DRAWINGS FOR APPROVAL.
- ALL COMPONENTS ARE TO BE LABELLED WITH NON-STICK LABELS.
- ENERGEX PADLOCK ON THE METER CUBICAL.
- TWO ENERGEX PADLOCK KEYS AND TWO 92268 KEYS.

PROVIDE THE DISTRIBUTION BOARD AS FOLLOWS:

- WALL MOUNTED.
- IP44 FORM 1.
- LIGHT GREY ENCLOSURE WHITE ESCUTCHEON.
- 3 POINT 92268 KEY LOCKABLE FLUSH HANDLES ON ALL DOORS.
- LIFT OFF HINGES ON ALL DOORS AND ESCUTCHEONS.
- 1/4 TURN LATCHES AND D HANDLES ON ALL ESCUTCHEONS.
- ALL SWITCHGEAR TO BE SCHNEIDER OR NHP/ TERASAKI.
- PROVIDE SHOP DRAWINGS FOR APPROVAL.
- 25% SPARE POLES AT PRACTICAL COMPLETION.
- ALL COMPONENTS ARE TO BE LABELLED WITH NON-STICK LABELS.

ENSURE ALL THREE PHASE CIRCUITS ARE PROVIDED WITH CORRECT PHASE ROTATION.

ENSURE ALL OUTLETS AND ISOLATORS ARE POSITIONED SUCH THAT THEY ARE NOT COVERED BY THE EQUIPMENT. THE FINAL POSITION OF ALL OUTLETS AND ISOLATORS ARE TO BE CONFIRMED ON SITE BY THE TENANTS REPRESENTATIVE.

THE POWER DISTRIBUTION COMPONENT OF THIS CONTRACT INCLUDES, BUT IS NOT LIMITED TO THE FOLLOWING EXTENT OF WORK:

- POWER DISTRIBUTION.
- ENERGEX NEGOTIATIONS AND APPLICATION.
- ENERGEX PADMOUNT SUBSTATION.
- RETAIL METERING.
- CONSUMERS MAINS.
- MAIN SWITCHBOARD.
- SUBMAINS.
- DISTRIBUTION BOARD.
- PV SYSTEM INCLUDING THE ENERGEX APPLICATION.
- CABLE ACCESS WAYS.
- CIRCUITS.
- ISOLATORS AND OUTLETS.
- TESTING AND COMMISSIONING.
- THERMOSCAN THE MSB AND THE DISTRIBUTION BOARD ONE WEEK AFTER PRACTICAL COMPLETION.
- PROVIDE A CHART RECORDING OF THE MAINS CURRENT, VOLTAGE, FREQUENCY FOR THE FIRST 14 DAYS FOLLOWING PRACTICAL COMPLETION AND SUBMIT THE THERMOSCAN CHART RECORDING AND FOR APPROVAL.
- PROVIDE A 3kW SOLAR PHOTOVOLTAIC SYSTEM IN ACCORDANCE WITH AS 5033 WITH THE PV INSTALLATION UNDERTAKEN BY AN ACCREDITED INSTALLER MEMBER OF THE CLEAN ENERGY COUNCIL.

PROVIDE PV PANELS WITH AN EFFICIENCY IN EXCESS OF 20% AND A MANUFACTURERS 15-YEAR PRODUCT WARRANTY AND A PERFORMANCE WARRANTY GUARANTYING 80% OF THE PANELS RATED OUTPUT AFTER 25 YEARS. PROVIDE AN INVERTER THAT HAS A WI FI INTERNET CONNECTION, A LOSS OF LESS THAN 5% AND A MANUFACTURERS PRODUCT WARRANTY OF 5 YEARS. PROVIDE THE PV SYSTEM DC AND AC CABLING THAT HAS A LESS THAN COMBINED LOSS LESS THAN 3%. PROVIDE SHOP DRAWINGS AND TECHNICAL DETAILS OF THE PV SYSTEM INCLUDING ALL COMPONENTS AND THE PV PANEL LAYOUT FOR APPROVAL.

NOTES

6. LIGHTING

THE LIGHTING COMPONENT OF THE ELECTRICAL SERVICES SUB-CONTRACT INCLUDES ALL OF THE INTERNAL AND EXTERNAL LIGHT FITTINGS, LAMPS AND ACCESSORIES. PROVIDE ALL NECESSARY ACCESSORIES TO FACILITATE THE COMPLETE LIGHTING INSTALLATION. THE LIGHTING COMPONENT OF THE ELECTRICAL SERVICES SUB-CONTRACT INCLUDES THOUGH IT IS NOT LIMITED TO THE FOLLOWING EXTENT OF WORK:

- INTERNAL AND EXTERNAL LIGHTING.
- EMERGENCY AND EXIT LIGHTING.
- EARTHING OF THE LIGHTING INSTALLATION.
- LIGHTING CONTROL.
- LIGHTING SUBCIRCUITS.
- TESTING AND COMMISSIONING.

PROVIDE A SINGLE POINT EMERGENCY LIGHTING SYSTEM THAT COMPLIES WITH THE LATEST ISSUE OF ALL PARTS AS2293 AND THE RELEVANT PARTS OF THE NCC BCA. INSTALL EMERGENCY LIGHT FITTINGS NOMINATED AS MAINTAINED WITH THE LAMP PERMANENTLY ON SUPPLIED VIA AN UNSWITCHED ACTIVE MAINS SUPPLY WHEN THE MAINS SUPPLY IS AVAILABLE. WHEN THE MAINS SUPPLY IS NOT AVAILABLE, THE LAMP IS TO REMAIN ON SUPPLIED BY THE EMERGENCY PACK. SINGLE LAMP MAINTAINED EMERGENCY LIGHTS ARE NOT SWITCHED WITH THE LOCAL GENERAL AREA LIGHTING. (THE LAMP IS ALWAYS ON.)

INSTALL EMERGENCY LIGHT FITTINGS NOMINATED AS NON-MAINTAINED AS FOLLOWS:

- IF THE FITTING IS NOT BEING SWITCHED, THE LAMP IS TO REMAIN OFF WHEN THE MAINS SUPPLY IS AVAILABLE. WHEN THE MAINS SUPPLY IS NOT AVAILABLE THE LAMP IS TO BE SWITCHED ON SUPPLIED BY THE EMERGENCY PACK. UNSWITCHED SINGLE LAMP NON-MAINTAINED EMERGENCY LIGHTS ARE NOT SWITCHED WITH THE LOCAL GENERAL AREA LIGHTING. (THE LAMP IS ON ONLY WHEN THE MAINS SUPPLY IS NOT AVAILABLE.)
- IF THE FITTING IS BEING SWITCHED, THE LAMP IS TO BE SUPPLIED AND CONTROLLED WITH THE LOCAL GENERAL AREA LIGHTING WHEN THE MAINS SUPPLY IS AVAILABLE. WHEN THE MAINS SUPPLY IS NOT AVAILABLE THE LAMP IS TO BE SWITCHED ON, SUPPLIED BY THE EMERGENCY PACK. (THE LAMP IS ON WHEN TURNED ON WITH THE LOCAL GENERAL LIGHTING OR THE MAIN SUPPLY IS NOT AVAILABLE.)

7. TELECOMMUNICATIONS SERVICE

THE COMMUNICATIONS CABLING COMPONENT OF THIS CONTRACT INCLUDES THE PROVISION OF A NEW FIBRE TELECOMMUNICATIONS SERVICE TO THE SITE WITH AN EXTERNAL PCD AND NTD ADJACENT THE COMMUNICATIONS RACK. ARRANGE FOR THE TELECOMMUNICATIONS SERVICE TO BE INSTALLED INCLUDING ALL CABLE ACCESS WAYS AND DOCUMENTATION IN ACCORDANCE WITH THE TELECOMMUNICATIONS SERVICE SUPPLIERS REQUIREMENTS.


8. ABBREVIATIONS

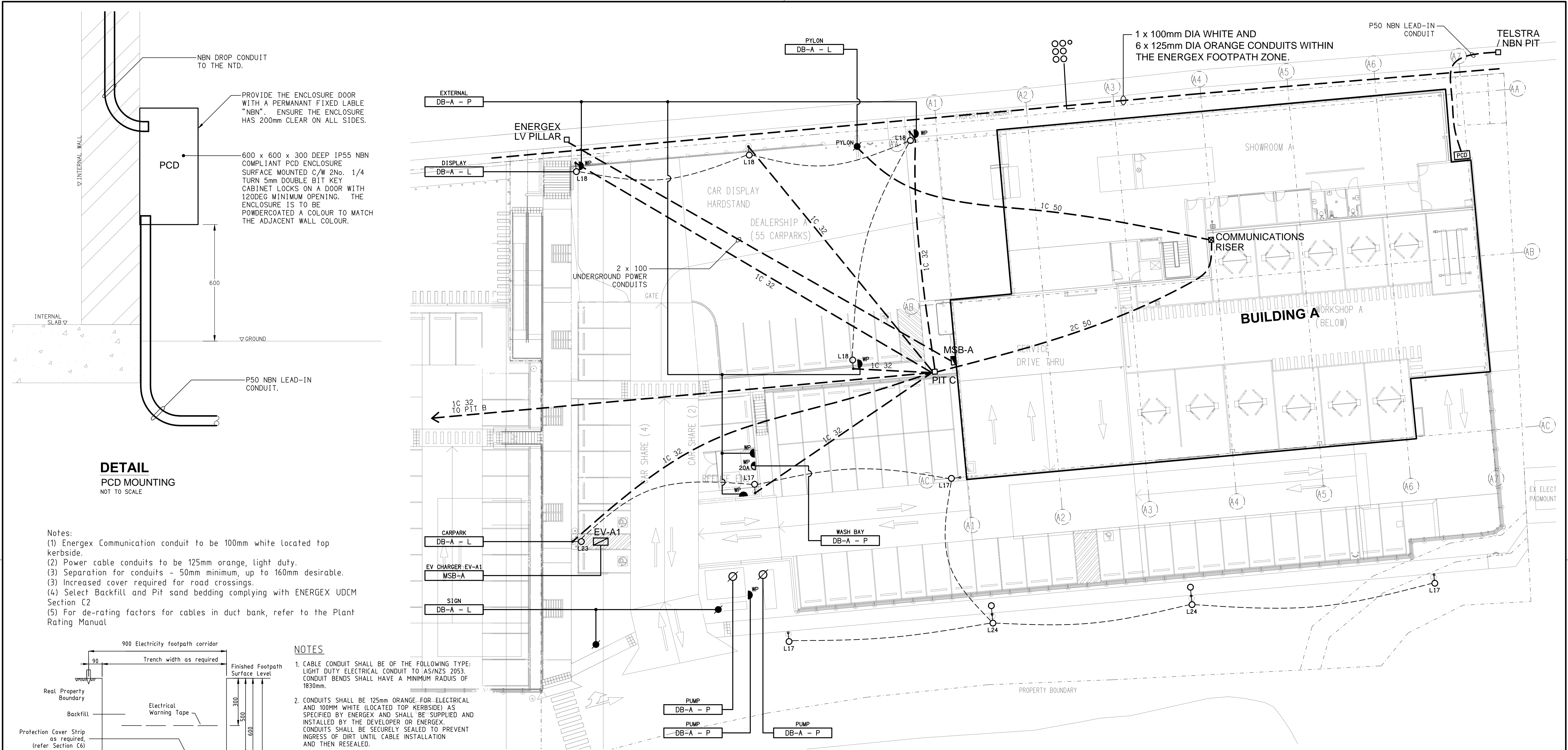
- A - AMP CURRENT RATING
- AB - MOUNT ABOVE BENCH.
- AFFL - ABOVE FINISHED FLOOR LEVEL.
- BB - MOUNT BELOW BENCH.
- BH - MOUNT ON BULKHEAD.
- CEIL - MOUNT ON CEILING.
- CS - MOUNT WITHIN CEILING SPACE.
- C/W - COMPLETE WITH.
- DR - DRYER.
- DW - DISHWASHER.
- HWS - HOT WATER SYSTEM.
- MCB - MINIATURE CIRCUIT BREAKER.
- MCCB - MOLDED CASE CIRCUIT BREAKER.
- MDB - MAIN DISTRIBUTION BOARD.
- MEN - MULTIPLE EARTH NEUTRAL LINK.
- MSB - MAIN SWITCHBOARD.
- MSSB - MECHANICAL SERVICES SWITCHBOARD.
- MW - MICROWAVE.
- N - NEON / LED INDICATOR WHEN ON.
- NTS - NOT TO SCALE.
- OV - OVEN.
- RCBO - CIRCUIT PROTECTED VIA A 30mA RESIDUAL CURRENT DEVICE INTEGRAL TO THE CIRCUIT BREAKER.
- REF - REFRIGERATOR.
- UNO - UNLESS NOTED OTHERWISE.
- WM - WASHING MACHINE.
- WP - WEATHERPROOF TO IP66 UNO.
- 500 - NUMBER DENOTES MOUNTING HEIGHT AFFL.

9. MANAGED SOLUTIONS

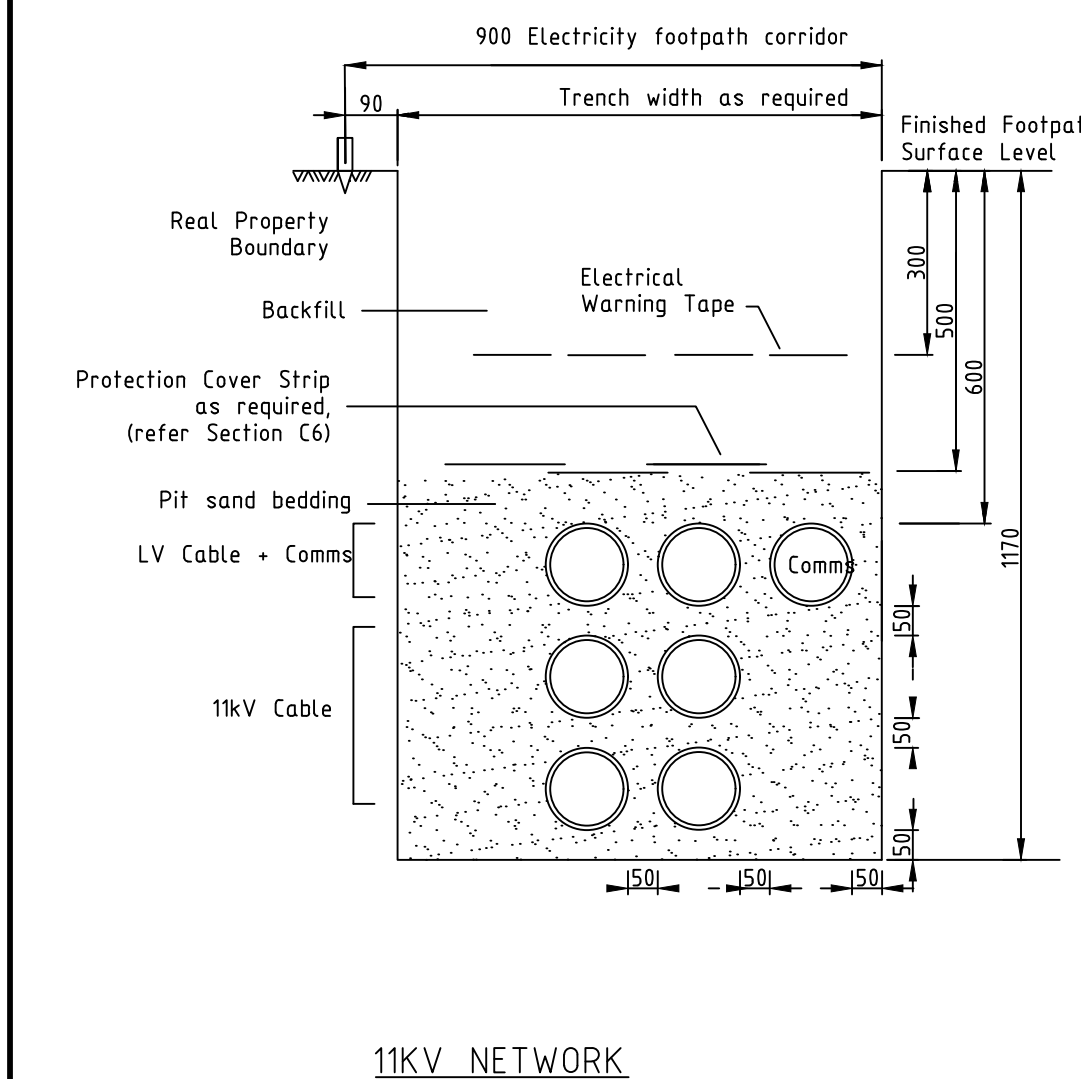
COORDINATE WITH THE TENANTS SPECIALIST CONTRACTOR MANAGED SOLUTIONS WHO WILL BE PROVIDING THE FOLLOWING SYSTEMS AND CABLING DIRECTLY TO THE TENANT:

- COMMUNICATIONS.
 - TIE CABLES.
 - COMMUNICATIONS RACK.
 - UPS AND ALL ACTIVE NETWORK EQUIPMENT.
 - PATCH PANELS, PATCH LEADS AND RACK CABLE MANAGEMENT.
 - COMMUNICATIONS CABLING AND OUTLETS.
- CCTV.
 - ACTIVE CENTRAL PROCESSING AND RECORDING EQUIPMENT.
 - CABLING, OUTLETS AND CAMERAS.
 - MONITORS.
 - CAMERA HOUSINGS AND MOUNTINGS.
- INTRUDER DETECTION.
 - ACTIVE CENTRAL PROCESSING EQUIPMENT.
 - CABLING, DETECTORS, KEY PANELS , STROBES AND SIRENS.
 - MONITORING.
- ACCESS CONTROL.
 - ACTIVE CENTRAL PROCESSING EQUIPMENT.
 - CABLING, DOOR CONTROLLERS, STRIKES, AND DOOR HOLDERS.
 - CARD READERS AND CARDS.
- BACK GROUND MUSTC.
 - ACTIVE CENTRAL SOURCE, CONTROL AND AMPLIFICATION EQUIPMENT.
 - CABLING AND SPEAKERS.
- MATV.
 - ANTENNA.
 - HEADEND AND DISTRIBUTION EQUIPMENT.
 - CABLING AND OUTLETS.
 - MONITORS.

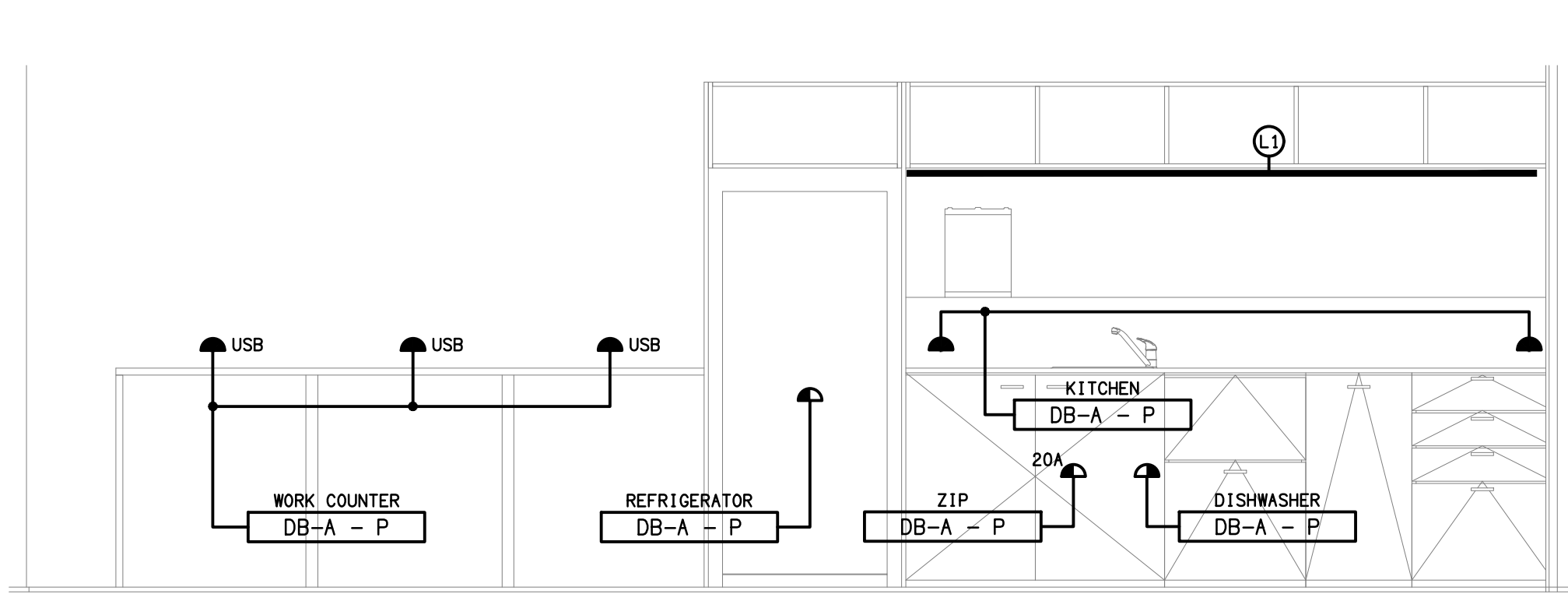
<div>ELECTRICAL DESIGN GROUP BRISBANE PTY LTD ACN 092 710 793</div> <div>TRADING AS: ELECTRICAL DESIGN GROUP</div>		<div>THE COPYRIGHT OF THIS DRAWING REMAINS THE PROPERTY OF THE ELECTRICAL DESIGN GROUP.</div> <div>USE FIGURED DIMENSIONS IN PREFERENCE TO SCALE.</div> <div>ALL DIMENSIONS TO BE VERIFIED ONSITE.</div>	<div></div> <div>Rohrig (Qld) Pty Ltd ABN 67 093 753 970 QBSA LIC NO 740842 250 Abbotsford Road, Bowen Hills Qld 4006 PO Box 86 Albion DC Qld 4010 T+61 (7) 3257 4411 F+61 (7) 3257 2211 www.rohrig.com.au</div>	<div> ELECTRICAL DESIGN GROUP ELECTRICAL BUILDING SERVICES CONSULTANTS BRISBANE GOLD COAST</div> <div>P.O.Box 15, Sherwood Q.4075 Phone: (07) 3278 4375 Email: brisbane@edg.net.au Web: www.edg.net.au</div>	<div>PROJECT: LLEWELLYN MOTORS SPRINGFIELD - LOT 34</div> <div>LOT 34 AUGUSTA PARKWAY, AUGUSTINE HEIGHTS</div>	<table><tr><td>D</td><td>80% DEVELOPED</td><td>24/02/2025</td></tr><tr><td>REV:</td><td>DESCRIPTION:</td><td>DATE:</td></tr><tr><td colspan="3">DRAWING: ELECTRICAL SERVICES NOTES</td></tr><tr><td>SCALE: NOT TO SCALE AT A1</td><td>PROJECT NO: C3396a</td><td>DRAWING NO: E02</td><td>REVISION: D</td></tr></table>	D	80% DEVELOPED	24/02/2025	REV:	DESCRIPTION:	DATE:	DRAWING: ELECTRICAL SERVICES NOTES			SCALE: NOT TO SCALE AT A1	PROJECT NO: C3396a	DRAWING NO: E02	REVISION: D
D	80% DEVELOPED	24/02/2025																	
REV:	DESCRIPTION:	DATE:																	
DRAWING: ELECTRICAL SERVICES NOTES																			
SCALE: NOT TO SCALE AT A1	PROJECT NO: C3396a	DRAWING NO: E02	REVISION: D																



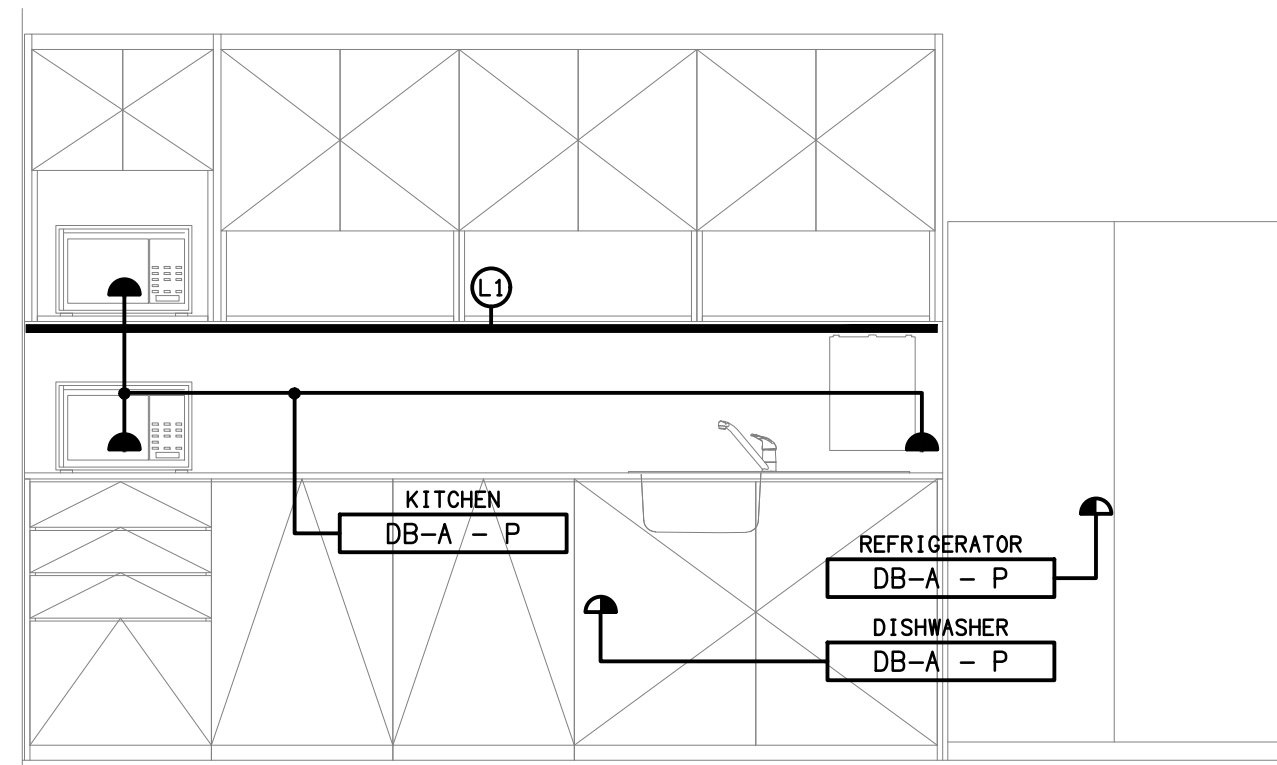
Notes:
(1) Energex Communication conduit to be 100mm white located top kerbside.
(2) Power cable conduits to be 125mm orange, light duty.
(3) Separation for conduits - 50mm minimum, up to 160mm desirable.
(4) Increased cover required for road crossings.
(5) Select Backfill and Pit sand bedding complying with ENERGEX UDCM Section C2
(6) For de-rating factors for cables in duct bank, refer to the Plant Rating Manual



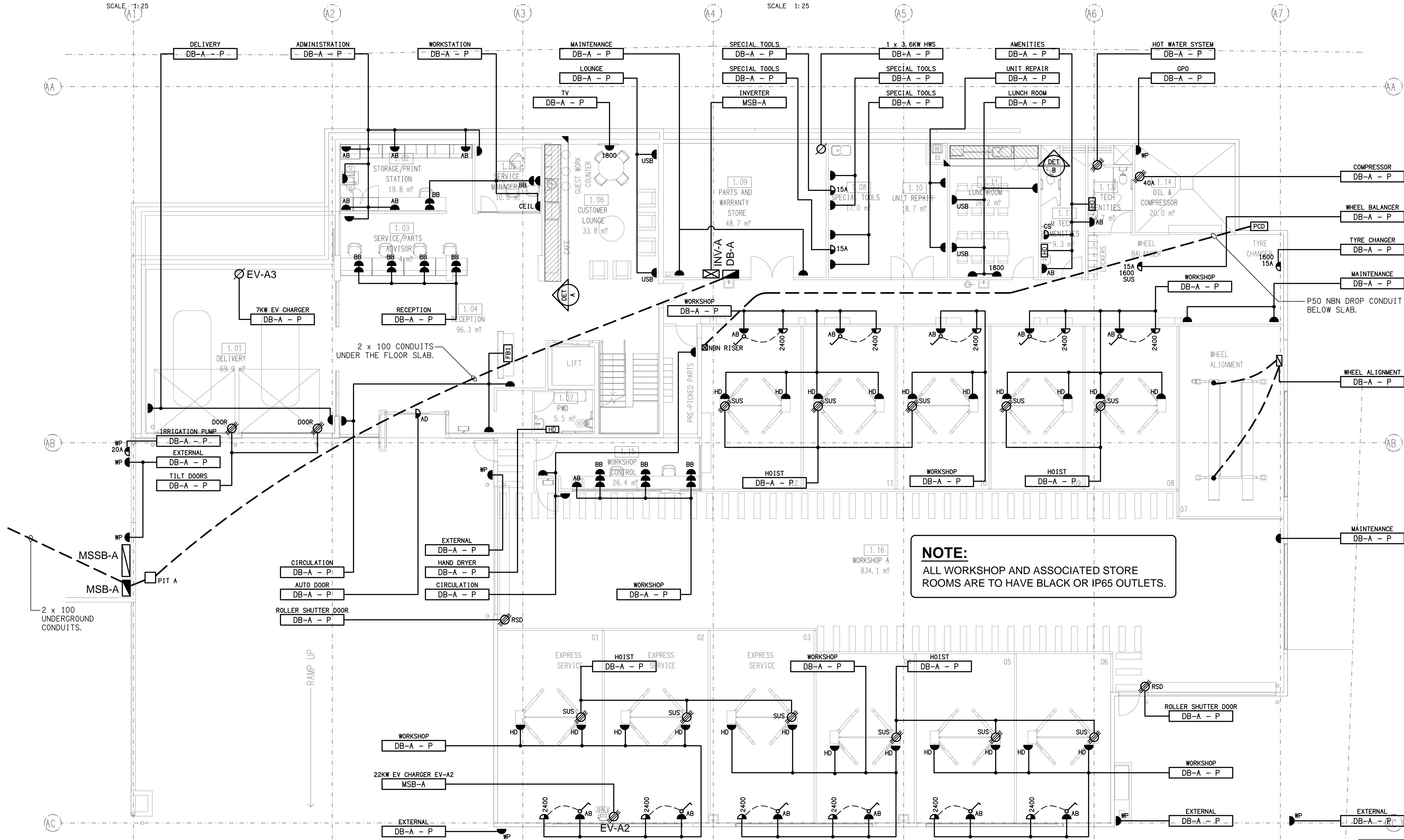
TYPICAL CROSS SECTION - 11KV AND C&I (FOOTPATH ON PUBLIC FOOTPATHS)



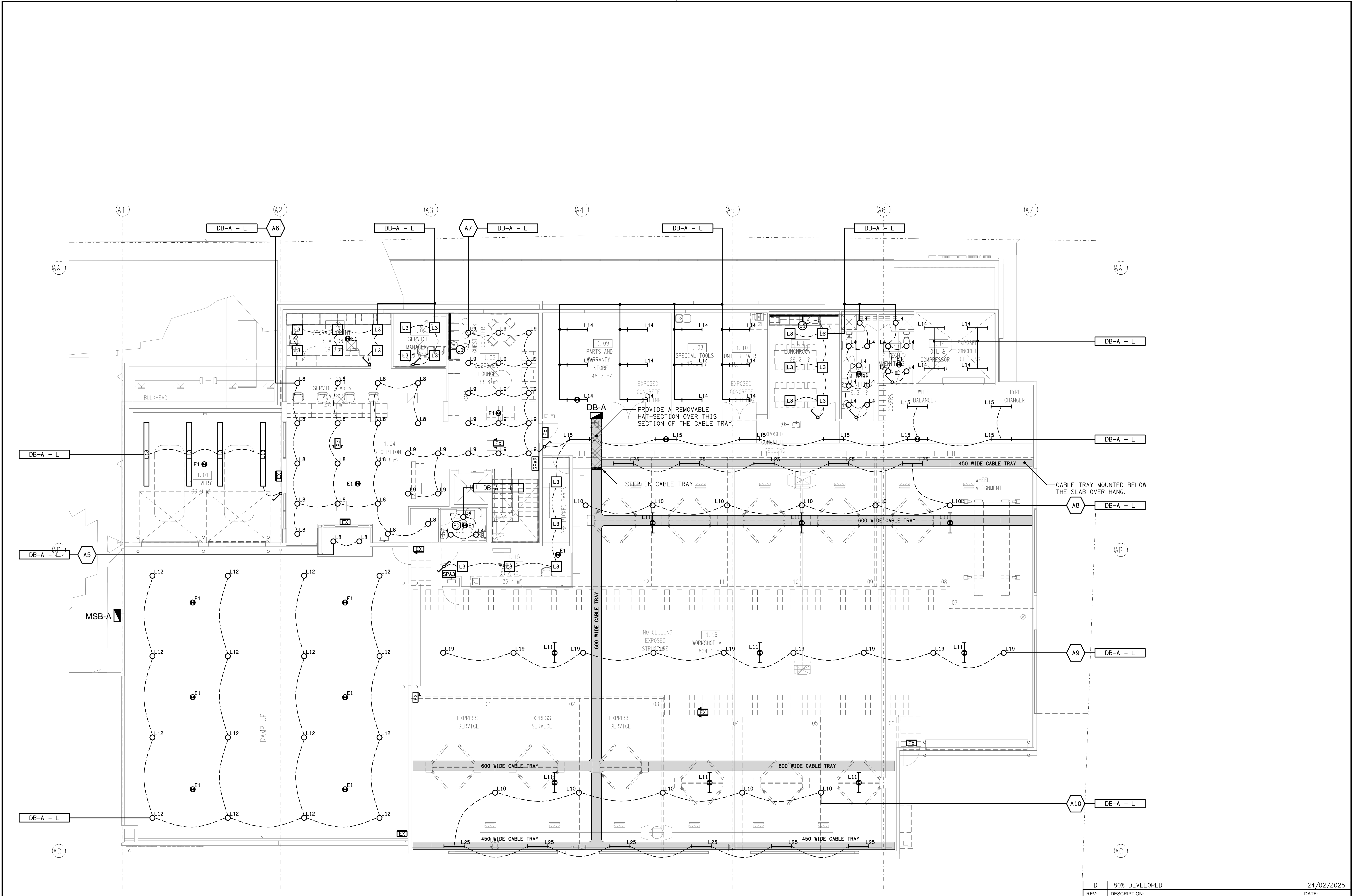
DETAIL A
CUSTOMER KITCHENETTE ELEVATION
SCALE 1:25

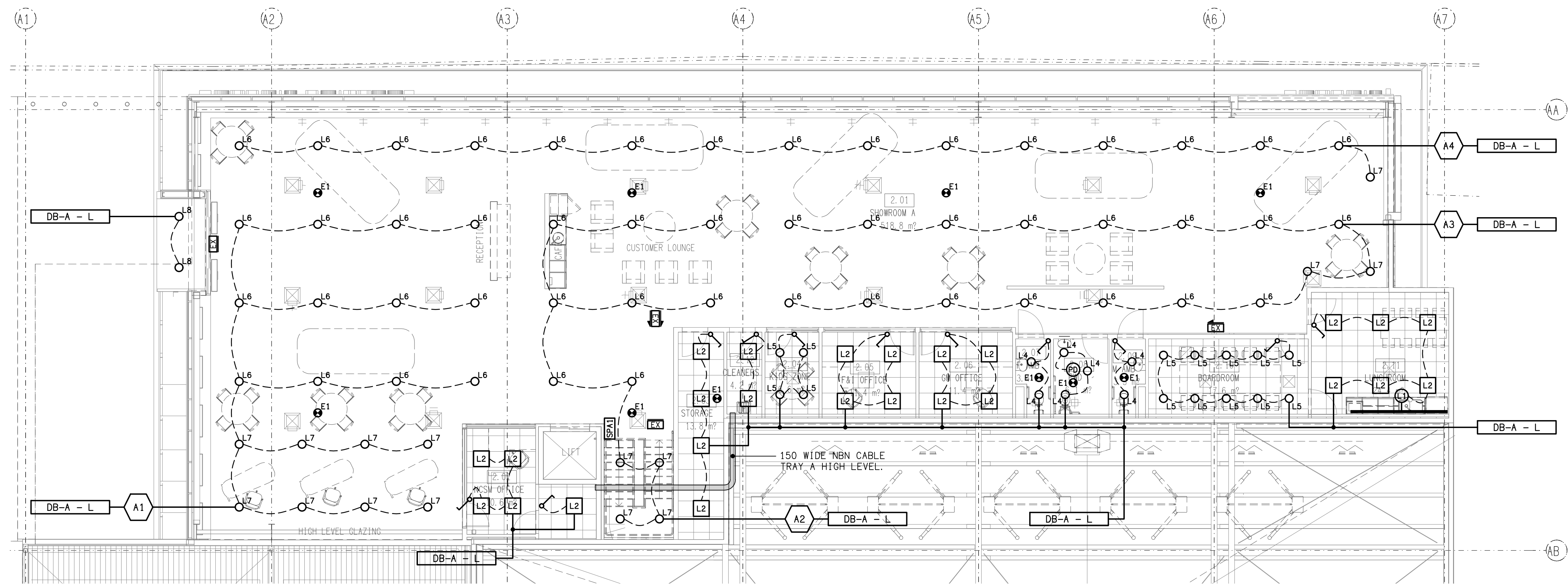


DETAIL B
LUNCH ROOM KITCHENETTE
SCALE 1:25

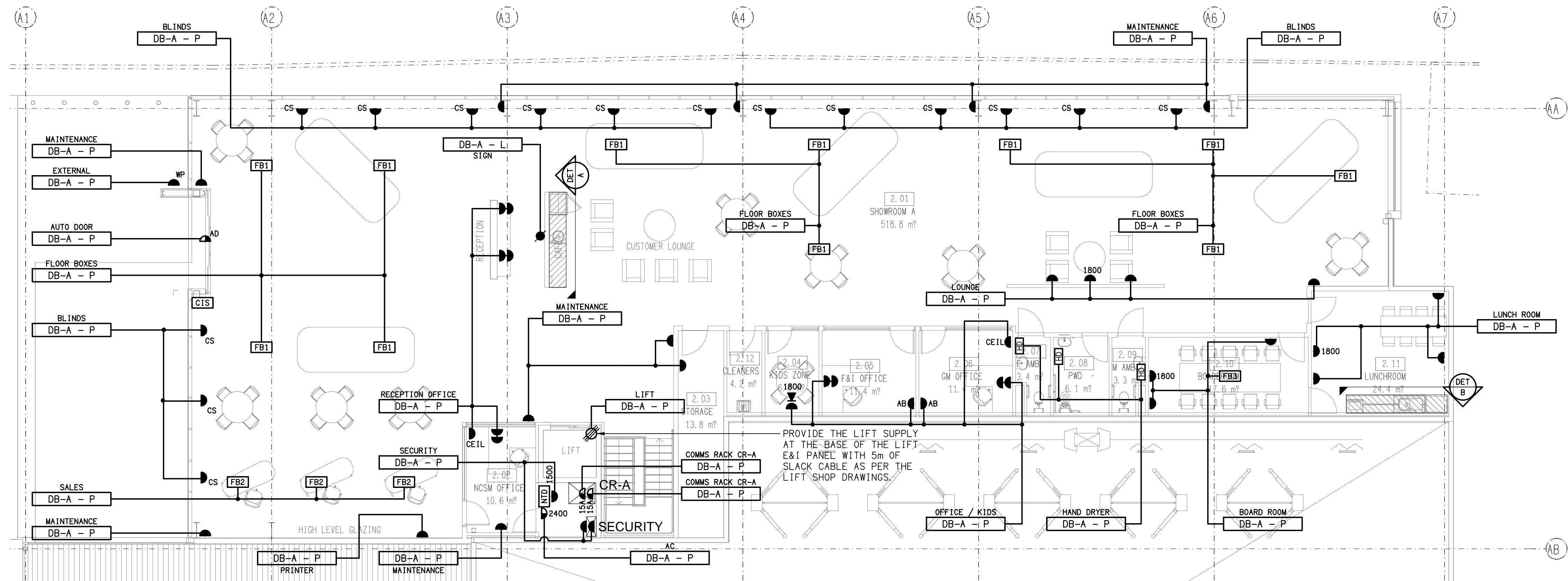


NOTE:
ALL WORKSHOP AND ASSOCIATED STORE ROOMS ARE TO HAVE BLACK OR IP65 OUTLETS.

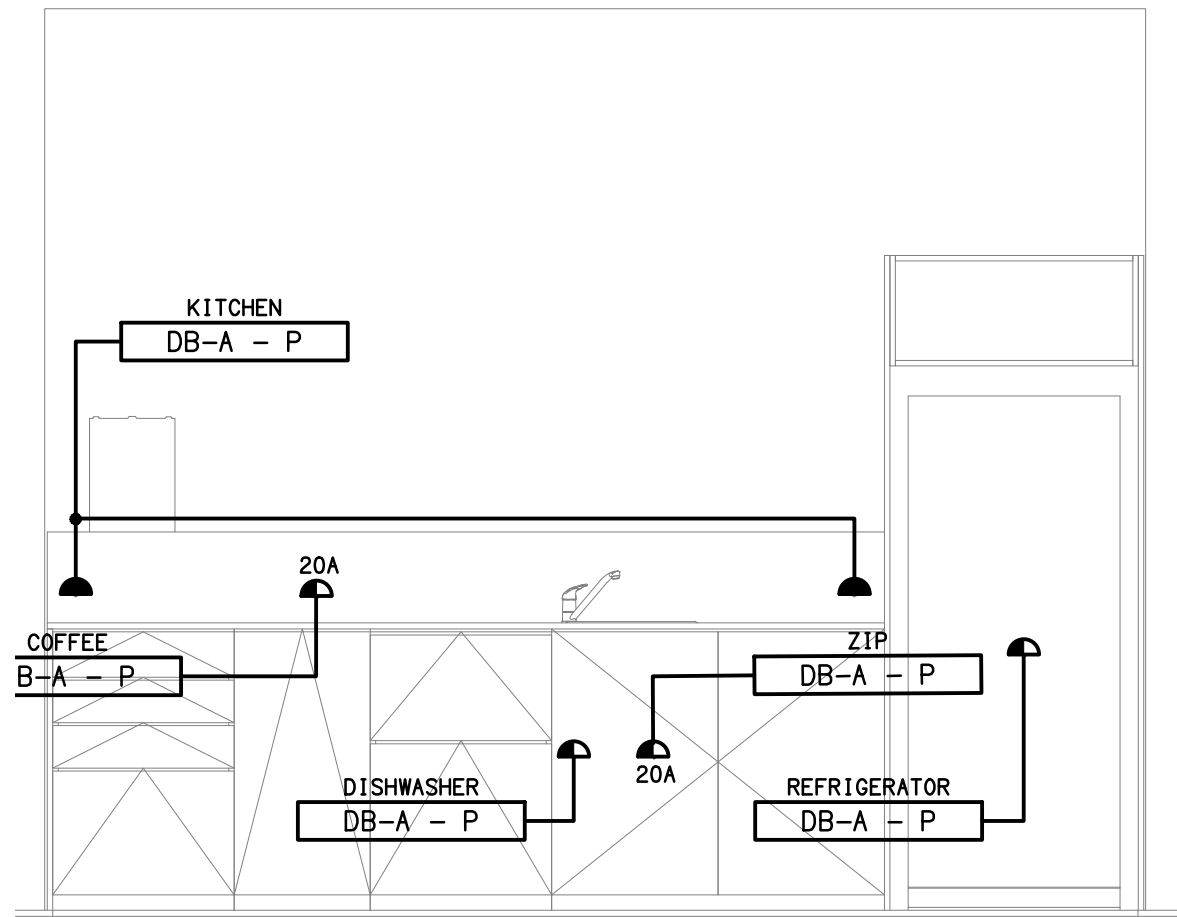




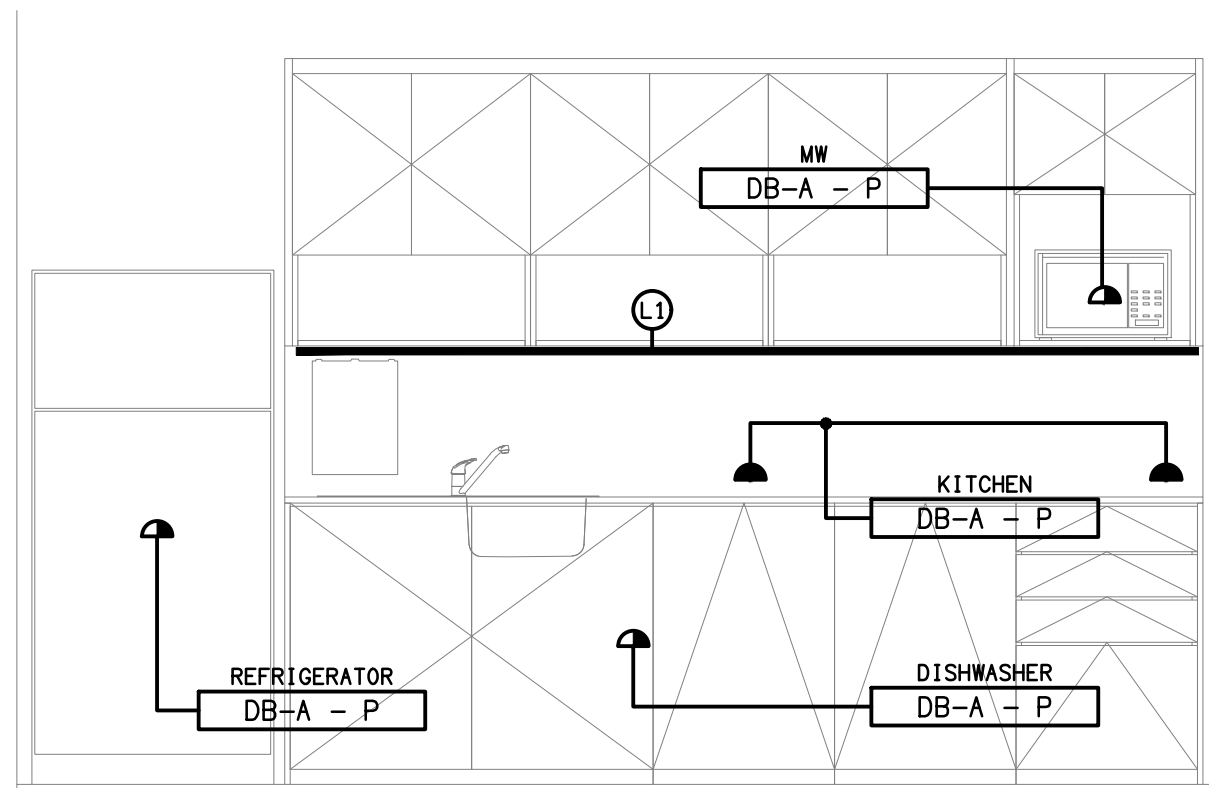
REFLECTED CEILING PLAN
GROUND LEVEL
SCALE 1:100



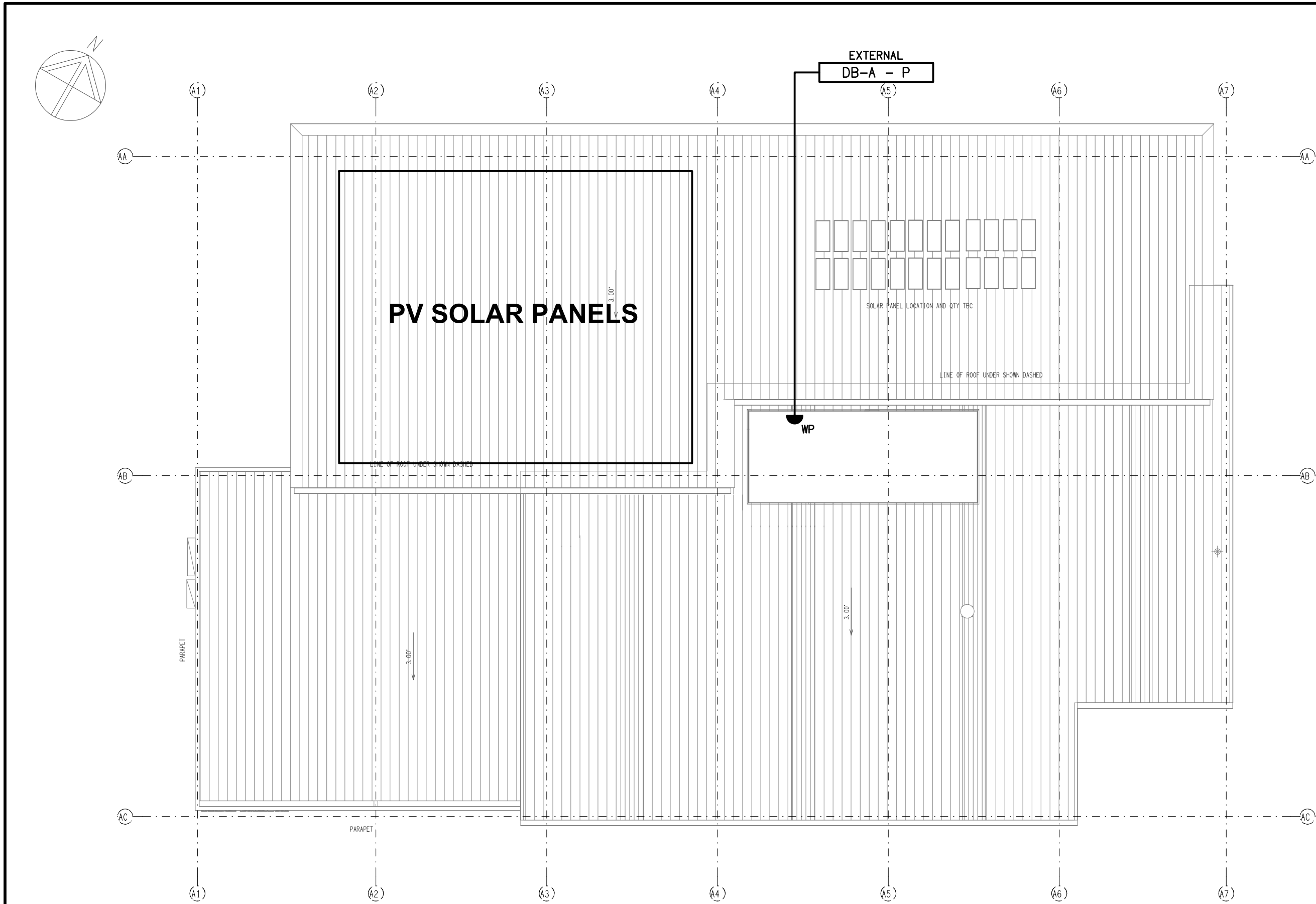
FLOOR PLAN
GROUND LEVEL
SCALE 1:100



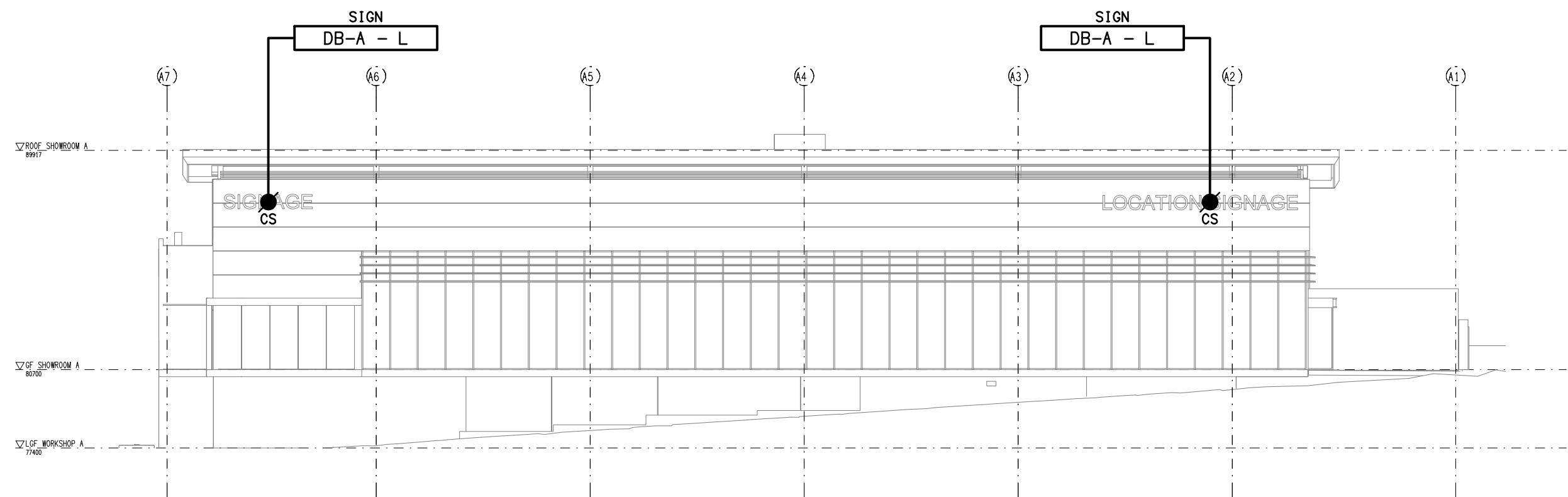
DETAIL A
CUSTOMER CAFE KITCHENETTE
SCALE 1:25



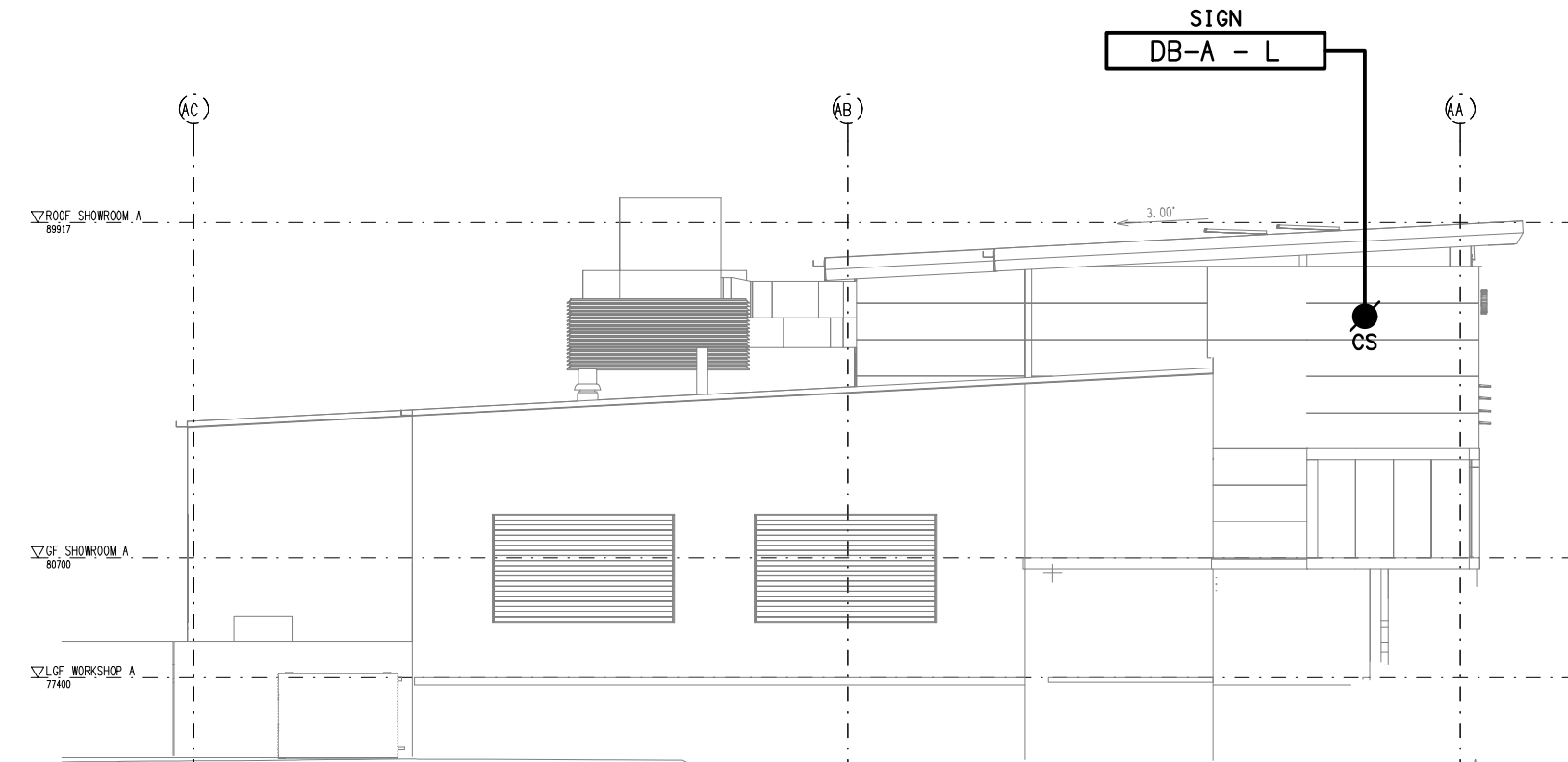
DETAIL B
LUNCH ROOM KITCHENETTE
SCALE 1:25



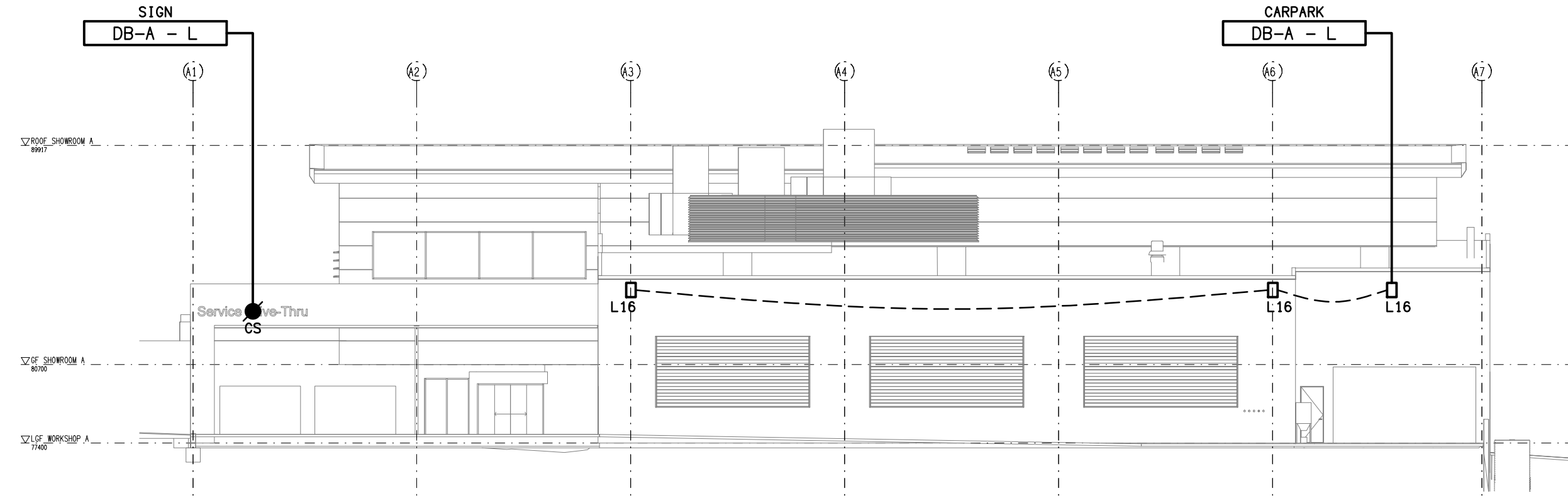
ROOF LEVEL
FLOOR PLAN
SCALE 1: 200



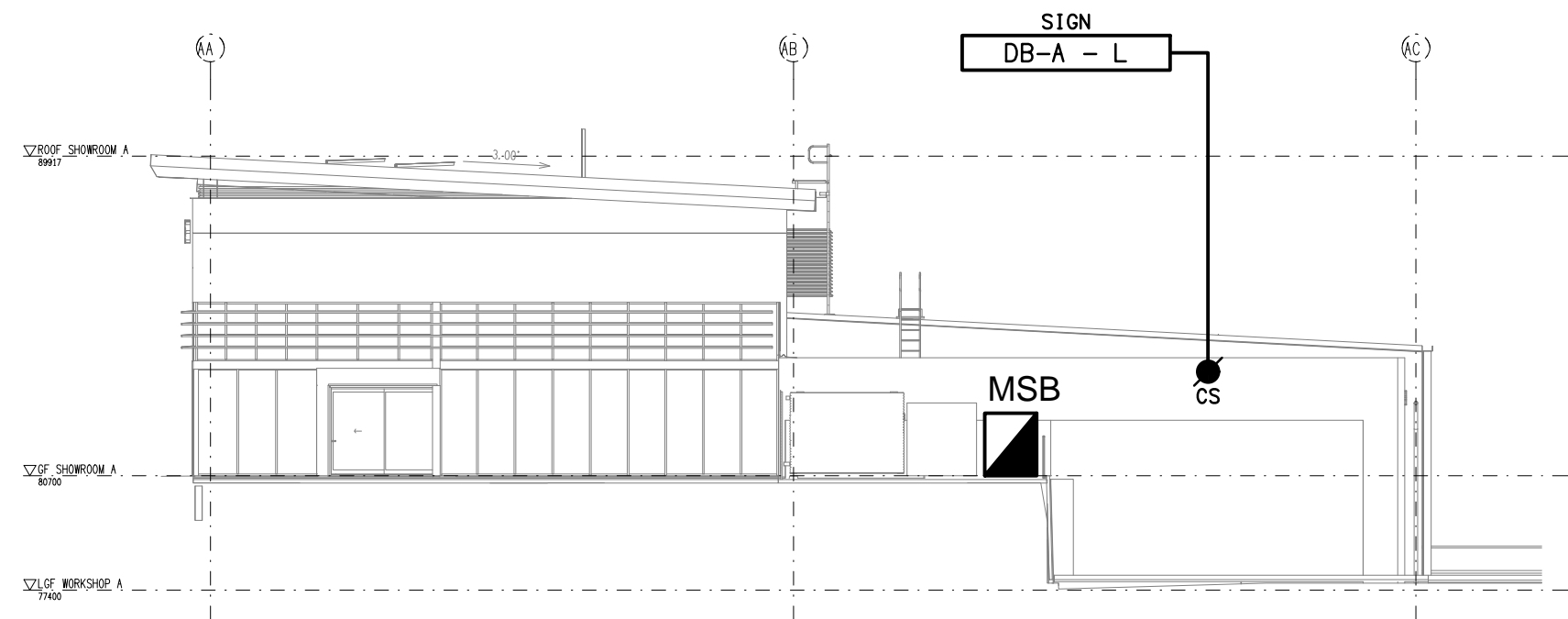
NORTHERN ELEVATION



EASTERN ELEVATION

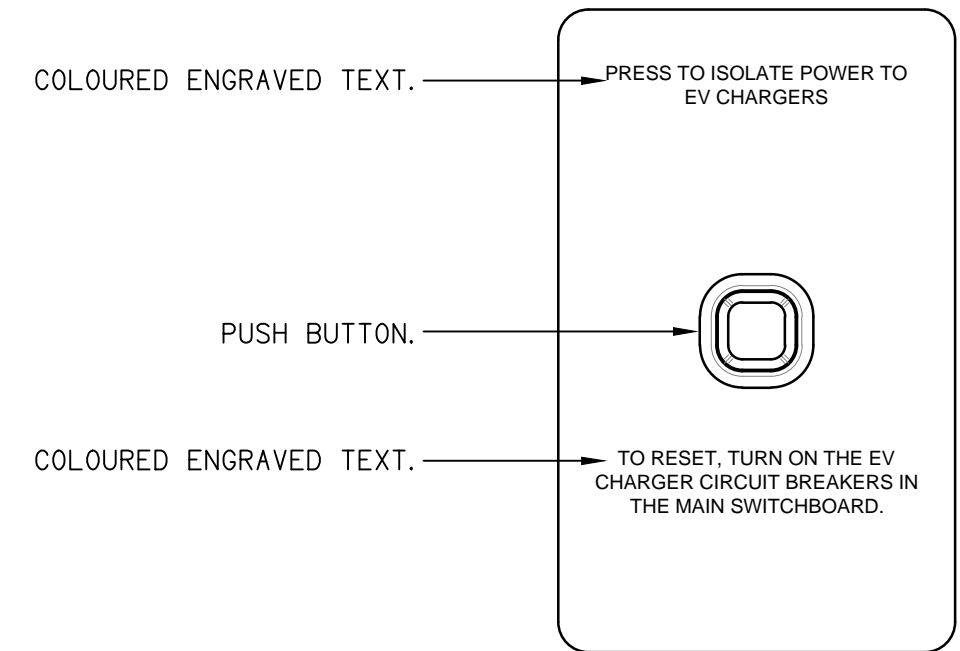
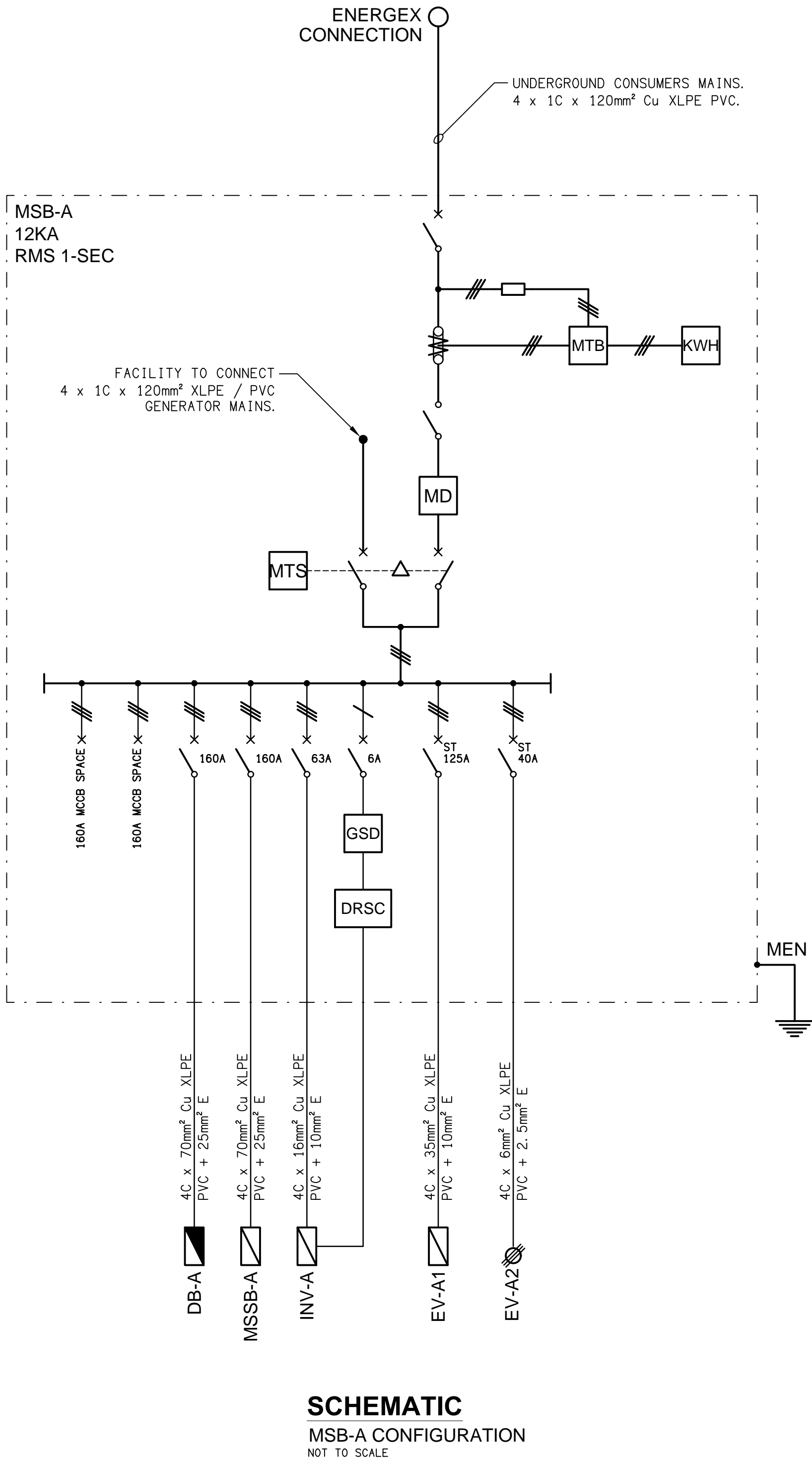


SOUTHERN ELEVATION

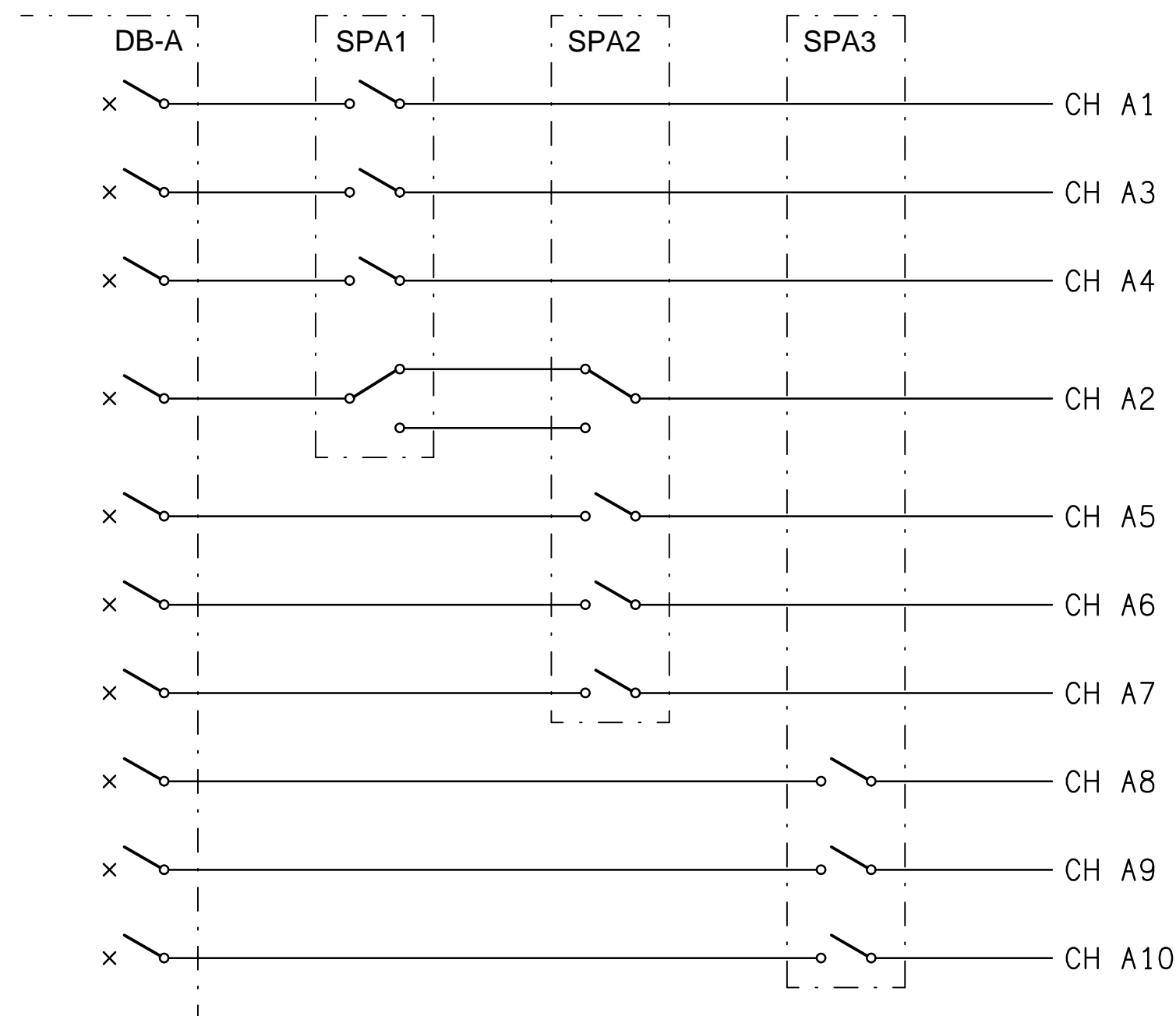


WESTERN ELEVATION

DETAILS
EXTERNAL BUILDING ELEVATIONS
SCALE 1: 200



DETAIL
ELECTRIC VEHICLE CHARGING ISOLATION SWITCH (CIS)
NOT TO SCALE



SCHEMATIC
LIGHTING CONTROL
NOT TO SCALE