



ELECTRICAL DESIGN GROUP

ELECTRICAL BUILDING SERVICES CONSULTANTS

P.O. Box 15, SHERWOOD Q. 4075

Phone: (07) 3278 4375

Website: www.edg.net.au Email: brisbane@edg.net.au

C3391a - WATERFRONT HOTEL, DIDDILLIBAH

C3391a-0001(F).xls

ELECTRICAL SERVICES CONTRACT DOCUMENT SCHEDULE

REVISION F - 03 APRIL 2025

ISSUING INFORMATION				DATE OF ISSUE							
				DAY	15	22	25	25	28	03	
				MONTH	11	11	02	02	02	04	
				YEAR	24	24	25	25	25	25	
REASON FOR ISSUE				P	T	C	C	C	C	C	
A = APPROVAL				C = CONSTRUCTION				N = COORDINATION			
				P = PRELIMINARY				T = TENDER			

DISTRIBUTION				NUMBER OF COPIES							
WWW.EDG.NET.AU				1E	1E	1E	1E	1E	1E		
CAYAS + WARD ARCHITECTS				1E	1E	1E	1E	1E	1E		
P = PRINT				T = TRACING				D = DISC			
				E = EMAIL				F = FAX			

DOCUMENTS	TITLE	REVISION									
C3391a-E01.dwg	LEGEND & DETAILS	A	B	C				D			
C3391a-E02.dwg	NOTES DB-1 SCHEMATIC	A	B	C							
C3391a-E03.dwg	FLOOR PLAN	A	B	C							
C3391a-E04.dwg	GAMING ROOM & BAR DETAILS	A	B	C							
C3391a-E05.dwg	REFLECTED CEILING PLAN	A	B	C	D			E			
C3391a-E06.dwg	JOINERY & WALL LIGHTING PLANS	A	B	C			D	E			
C3391a-E07.dwg	CEILING FAN & DECK HEATER PLAN	A	B	C							
C3391a-E08.dwg	SWITCHBOARD ZONE PLAN	A	B	C							
C3391a-E09.dwg	ROOF PLAN & BUILDING ELEVATIONS		A	B							
C3391a-0001.xls	CONTRACT DOCUMENT SCHEDULE	A	B	C	D	E	F				
C3391a-0002.xls	EQUIPMENT SCHEDULE		A		B		C				
C3391a-0004.xls	LIGHTING CONTROL SCHEDULE		A				B				
C3391a-0005.xls	DISTRIBUTION BOARD DB-1 SCHEDULE		A								
C3391a-0006.xls	DISTRIBUTION BOARD DB-D SCHEDULE		A								
C3391a-0007.xls	DISTRIBUTION BOARD DB-G SCHEDULE		A								
C3391a-0001.zip	FITTING & OUTLET DATASHEETS		A								



ELECTRICAL DESIGN GROUP

ELECTRICAL BUILDING SERVICES CONSULTANTS

P.O. Box 15, SHERWOOD Q. 4075

Phone: (07) 3278 4375 Fax: (07) 3716 0222

Web Site: www.edg.net.au Email: brisbane@edg.net.au

C3391a - WATERFRONT HOTEL, DIDDILLIBAH					C3391a-0002(C).xls
ELECTRICAL EQUIPMENT SCHEDULE					
REVISION C - 03 APRIL 2025					
THE LIGHT FITTING SUPPLIER CONTACT DETAILS MAY BE AVAILABLE ON THE EDG WEBSITE VIA THE FOLLOWING LINK www.edg.net.au/Links/Lighting.htm					
TYPE	LAMPS	DESCRIPTION	COLOUR / ACCESSORY	CATALOGUE No	REV
RD01	13W 3000K LED	RECESSED 40DEG DOWNLIGHT C/W REMOTE DALI DIMMABLE DRIVER	BLACK	GAMMA ILLUMINATION RHO 1001-3K-13W	A
RD02	13W 3000K LED	RECESSED 40DEG DOWNLIGHT C/W REMOTE DALI DIMMABLE DRIVER	WHITE	GAMMA ILLUMINATION RHO 1001-3K-13W	A
RD03	24W 3000K LED	SURFACE MOUNTED ADJUSTABLE 36 DEG FLOOD LIGHT C/W INTEGRAL DALI DIMMABLE DRIVER	WHITE	GAMMA ILLUMINATION VIXO 1115-FL-3K-22W-SM	A
RD04	13W 3000K LED	RECESSED 40DEG DOWNLIGHT C/W REMOTE DALI DIMMABLE DRIVER	WHITE	GAMMA ILLUMINATION RHO 1001-3K-13W	A
RT01	40W 3000K LED	1200 X 300 LAY IN FLAT PLATE LED FITTING C/W REMOTE DALI DIMMABLE DRIVER MOUNTED IN A FLUSH RECESSED PLASTER BOARD KIT	WHITE TRIM	GAMMA ILLUMINATION PHANTOM 884501	A
RT02	20W 4000K LED	600 X 300 LAY IN FLAT PLATE LED FITTING C/W REMOTE DRIVER MOUNTED IN A FLUSH RECESSED PLASTER BOARD KIT	WHITE TRIM	GAMMA ILLUMINATION PHANTOM 884503	A
RT03	40W 4000K LED	1200 X 300 LAY IN FLAT PLATE LED FITTING C/W REMOTE DRIVER MOUNTED IN A FLUSH RECESSED PLASTER BOARD KIT	WHITE TRIM	GAMMA ILLUMINATION PHANTOM 884501	A
PD01	TRAILING EDGE DIMMABLE G125 240 VOLT 2700K E27 FILAMENT LED 800 LUMENS +/- 10% 40,000 HOUR LIFE	DECORATIVE PENDANT 190H X 400 DIA CONFIRM THE SUSPENSION HEIGHT ONSITE WITH THE ARCHITECT	CHARCOAL	LIVING STYLES GLADIATOR METAL PENDANT LIGHT	B
PD02	12W/M 2700K 24V LED	DECORATIVE PENDANT INSTALL CONFIRM THE SUSPENSION HEIGHT ONSITE WITH THE ARCHITECT THE CONTRACTOR IS TO TAKE POSSESSION OF THE PD02 FITTING AND LOCALLY MODIFY IF REMOVING THE 240 VOLT SUPPLY AND T8 LAMP FACILITY. PROVIDE THE PD02 FITTING WITH A CUSTOMISED LED STRIP C/W REMOTE 240/ 12 V DC DALI DIMMABLE POWER SUPPLY. LOCATE THE DRIVER / POWER SUPPLY IN A CONCEALED ACCESSIBLE POSITION NOTED ON THE AS CONSTRUCTED DOCUMENTS.	TEXTURED BLACK FITTING BLACK CEILING ROSE AND CABLING	FAT SHACK VINTAGE SUNSTATION LED TUBE LIGHT C/W LOCAL MODIFICATION	A
PD03	TRAILING EDGE DIMMABLE G125 240 VOLT 2700K E27 FILAMENT LED 800 LUMENS +/- 10% 40,000 HOUR LIFE	DECORATIVE 600 DIA PENDANT ALLOW TO ASSEMBLE AND INSTALL CONFIRM THE SUSPENSION HEIGHT ONSITE WITH THE ARCHITECT	NATURAL RATTAN	IVORY& DEENE ALICE SCALLOP RATTAN PENDANT LIGHT	A



ELECTRICAL DESIGN GROUP

ELECTRICAL BUILDING SERVICES CONSULTANTS

P.O. Box 15, SHERWOOD Q. 4075

Phone: (07) 3278 4375 Fax: (07) 3716 0222

Web Site: www.edg.net.au Email: brisbane@edg.net.au

C3391a - WATERFRONT HOTEL, DIDDILLIBAH					C3391a-0002(C).xls
ELECTRICAL EQUIPMENT SCHEDULE					
REVISION C - 03 APRIL 2025					
THE LIGHT FITTING SUPPLIER CONTACT DETAILS MAY BE AVAILABLE ON THE EDG WEBSITE VIA THE FOLLOWING LINK www.edg.net.au/Links/Lighting.htm					
TYPE	LAMPS	DESCRIPTION	COLOUR / ACCESSORY	CATALOGUE No	REV
WL01	TRAILING EDGE DIMMABLE GU10 240 VOLT 2700K LED	WALL LIGHT MOUNTED ADJUSTABLE SPOTLIGHT C/W LAMP AS PER THE ARCHITECTURAL ELEVATION	ANTIQUE BRONZE	FAT SHACK VINTAGE INDUSTRIAL FUNNEL ADJUSTABLE SPOTLIGHT C017- 1RB	B
WL02	TRAILING EDGE DIMMABLE ST64 PEAR 240 VOLT 2700K E27 FILAMENT LED 400 LUMENS +/- 10% 40,000 HOUR LIFE	WALL LIGHT MOUNTED IP55 320H X 210W X 140D FITTING C/W LAMP AS PER THE ARCHITECTURAL ELEVATION	BLACK	FAT SHACK VINTAGE CANAL OUTDOOR WALL LIGHT W108	A
WL03	TRAILING EDGE DIMMABLE ST64 PEAR 240 VOLT 2700K B22 FILAMENT LED 400 LUMENS +/- 10% 40,000 HOUR LIFE	WALL LIGHT MOUNTED 340H X 195W X 110D FITTING C/W LAMP AS PER THE ARCHITECTURAL ELEVATION	BLACK	FAT SHACK VINTAGE BUNKER CAGE WALL LIGHT W001-BLK CLEAR GLASS	A
WL04	3000K LED	DECORATIVE USB C CHARGEABLE BATTERY OPERATED HANGING LIGHT TO BE MOUNTED AS PER THE ARCHITECTURAL DETAIL	ANTIQUE BRONZE	BAREBONES BEACON HANGING LIGHT	A
WL05	2 X 240 VOLT 2700K E27 FILAMENT PHASE CUT DIMMABLE LED 400 LUMENS +/- 20%	DECORATIVE TWO LAMP WALL LIGHT AS PER THE WL05 DETAIL	RAW BLACK STEEL FITTINGS BRONZE PLATED BRASS HARDWARE	EDISON LIGHT GLOBES PLUMBING PIPE LIGHTING	A
WL06	E3 300K G9	WALL LIGHT MOUNTED 300DIA X 180H FITTING C/W LAMP AS PER THE ARCHITECTURAL ELEVATION	GREY AND WHITE	LUCRETIA RATTAN GLOW WALL LAMP	C
WL07	3000K LED	DECORATIVE WALL LIGHT MOUNTED 135H X 90D FITTING C/W LAMP AS PER THE ARCHITECTURAL ELEVATION	CLEAR	LUCRETIA AQUALIGHT WALL LAMP SKU: LUW41271/135	C
GL01	5W 3000K LED	GARDEN ELV SPIKE LIGHT. PROVIDE EACH GROUP OF GL01 FITTINGS WITH A REMOTE COMMON DALI DIMMABLE DRIVER. LOCATE DRIVER /POWER SUPPLY IN A CONCEALED ACCESSIBLE POSITION NOTED ON THE AS CONSTRUCTED DOCUMENTS.	BLACK	GAMMA ILLUMINATION RULOJ 885102	A
GL02	5W 3000K LED	POT MOUNTED ELV SPIKE LIGHT. PROVIDE EACH GROUP OF GL02 FITTINGS WITH A REMOTE COMMON DALI DIMMABLE DRIVER. LOCATE DRIVER /POWER SUPPLY IN A CONCEALED ACCESSIBLE POSITION NOTED ON THE AS CONSTRUCTED DOCUMENTS. RETICULATE THE ELV CABLING FROM THE FITTING TO THE DRIVER / POWER SUPPLY VIA THE CABLE ACCESS CHANNEL PROVIDED AS PART OF THE POT THEN VIA BLACK CONDUIT TO THE WALL CAVITY. PROVIDE AN ACCESS HATCH IF REQUIRED TO ACCESS THE DRIVER / POWER SUPPLY.	BLACK	GAMMA ILLUMINATION RULOJ 885102	A



ELECTRICAL DESIGN GROUP

ELECTRICAL BUILDING SERVICES CONSULTANTS

P.O. Box 15, SHERWOOD Q. 4075

Phone: (07) 3278 4375 Fax: (07) 3716 0222

Web Site: www.edg.net.au Email: brisbane@edg.net.au

C3391a - WATERFRONT HOTEL, DIDDILLIBAH

C3391a-0002(C).xls

ELECTRICAL EQUIPMENT SCHEDULE

REVISION C - 03 APRIL 2025

THE LIGHT FITTING SUPPLIER CONTACT DETAILS MAY BE AVAILABLE ON THE EDG WEBSITE VIA THE FOLLOWING LINK
www.edg.net.au/Links/Lighting.htm

TYPE	LAMPS	DESCRIPTION	COLOUR / ACCESSORY	CATALOGUE No	REV
SL01	LED GROW LIGHT	SURFACE MOUNTED ADJUSTABLE GROW LIGHT ALLOW TO INSTALL. ALLOW A PC SUM FOR THE SUPPLY OF EACH SL01 FITTING.	WHITE	ALLOW A PC SUM OF \$1000.00 PLUS GST FOR THE SUPPLY OF EACH SL01 FITTING	A
SL02	24W 3000K LED	SURFACE MOUNTED ADJUSTABLE 36 DEG FLOOD LIGHT C/W INTEGRAL DALI DIMMABLE DRIVER	WHITE	GAMMA ILLUMINATION VIXO 1115-FL-3K-22W-SM	A
SL03	LED GROW LIGHT	SURFACE MOUNTED ADJUSTABLE GROW LIGHT ALLOW TO INSTALL. ALLOW A PC SUM FOR THE SUPPLY OF EACH SL03 FITTING.	BLACK	ALLOW A PC SUM OF \$1000.00 PLUS GST FOR THE SUPPLY OF EACH SL03 FITTING	A
S1	880LM /M 3000K 24V LED	LED STRIP LIGHT IN A SCREW FIXED EXTRUSION C/W OPAL DIFFUSER MOUNTED IN THE JOINERY AS PER THE ARCHITECTURAL DETAIL. PROVIDE EACH GROUP OF S1 STRIP WITH REMOTE DALI DIMMABLE POWER SUPPLIES AS REQUIRED LOCATE THE POWER SUPPLIES IN A CONCEALED ACCESSIBLE POSITION NOTED ON THE AS CONSTRUCTED DOCUMENTS.	NATURAL	MELEC ML-ALU-1407-2M - ML-VLCRI-14.4-WW	A
S2	880LM /M 3000K 24V LED	LED STRIP LIGHT IN A SCREW FIXED EXTRUSION C/W OPAL DIFFUSER MOUNTED IN THE BAR COUNTER FACE AS PER THE ARCHITECTURAL DETAIL. PROVIDE EACH GROUP OF S2 STRIP WITH REMOTE DALI DIMMABLE POWER SUPPLIES AS REQUIRED LOCATE THE POWER SUPPLIES IN A CONCEALED ACCESSIBLE POSITION NOTED ON THE AS CONSTRUCTED DOCUMENTS.	NATURAL	MELEC ML-ALU-1407-2M - ML-VLCRI-14.4-WW	A
S3	880LM /M 3000K 24V LED	LED STRIP LIGHT IN A SCREW FIXED EXTRUSION C/W OPAL DIFFUSER MOUNTED IN THE FIRE PLACE SEATING AS PER THE ARCHITECTURAL DETAIL. PROVIDE EACH GROUP OF S3 STRIP WITH REMOTE DALI DIMMABLE POWER SUPPLIES AS REQUIRED LOCATE THE POWER SUPPLIES IN A CONCEALED ACCESSIBLE POSITION NOTED ON THE AS CONSTRUCTED DOCUMENTS.	NATURAL	MELEC ML-ALU-1407-2M - ML-VLCRI-14.4-WW	A
S4	880LM /M 3000K 24V LED	PROVIDE THE S4 AS THREE PARALLEL RUNS OF LED STRIP LIGHTS IN SEPARATE SCREW FIXED EXTRUSIONS C/W OPAL DIFFUSER MOUNTED BEHIND THE AWNING AS PER THE ARCHITECTURAL DETAIL. PROVIDE THE S4 STRIPS WITH REMOTE DALI DIMMABLE POWER SUPPLIES AS REQUIRED LOCATE THE POWER SUPPLIES IN A CONCEALED ACCESSIBLE POSITION NOTED ON THE AS CONSTRUCTED DOCUMENTS.	NATURAL	MELEC ML-ALU-1407-2M - ML-VLCRI-14.4-WW	A
S5	880LM /M 3000K 24V LED	LED STRIP LIGHT IN A SCREW FIXED EXTRUSION C/W OPAL DIFFUSER MOUNTED IN THE JOINERY AS PER THE ASSOCIATED ELEVATION AND THE ARCHITECTURAL DETAIL. PROVIDE EACH GROUP OF S5 STRIP WITH REMOTE DALI DIMMABLE POWER SUPPLIES AS REQUIRED LOCATE THE POWER SUPPLIES IN A CONCEALED ACCESSIBLE POSITION NOTED ON THE AS CONSTRUCTED DOCUMENTS.	NATURAL	MELEC ML-ALU-1407-2M - ML-VLCRI-14.4-WW	A



ELECTRICAL DESIGN GROUP

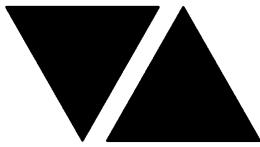
ELECTRICAL BUILDING SERVICES CONSULTANTS

P.O. Box 15, SHERWOOD Q. 4075

Phone: (07) 3278 4375 Fax: (07) 3716 0222

Web Site: www.edg.net.au Email: brisbane@edg.net.au

C3391a - WATERFRONT HOTEL, DIDDILLIBAH					C3391a-0002(C).xls
ELECTRICAL EQUIPMENT SCHEDULE					
REVISION C - 03 APRIL 2025					
THE LIGHT FITTING SUPPLIER CONTACT DETAILS MAY BE AVAILABLE ON THE EDG WEBSITE VIA THE FOLLOWING LINK www.edg.net.au/Links/Lighting.htm					
TYPE	LAMPS	DESCRIPTION	COLOUR / ACCESSORY	CATALOGUE No	REV
S6	880LM /M 3000K 24V LED	LED STRIP LIGHT IN A SCREW FIXED EXTRUSION C/W OPAL DIFFUSER MOUNTED IN THE FIRE PLACE JOINERY AS PER THE ARCHITECTURAL DETAIL. PROVIDE THE S6 STRIP WITH REMOTE DALI DIMMABLE POWER SUPPLIES AS REQUIRED LOCATE THE POWER SUPPLIES IN A CONCEALED ACCESSIBLE POSITION NOTED ON THE AS CONSTRUCTED DOCUMENTS.	NATURAL	MELEC ML-ALU-1407-2M - ML-VLCRI-14.4-WW	A
S7	880LM /M 3000K 24V LED	LED STRIP LIGHT IN A SCREW FIXED EXTRUSION C/W OPAL DIFFUSER MOUNTED IN THE JOINERY AS PER THE ARCHITECTURAL DETAIL. PROVIDE EACH GROUP OF S7 STRIP WITH REMOTE DALI DIMMABLE POWER SUPPLIES AS REQUIRED LOCATE THE POWER SUPPLIES IN A CONCEALED ACCESSIBLE POSITION NOTED ON THE AS CONSTRUCTED DOCUMENTS.	NATURAL	MELEC ML-ALU-1407-2M - ML-VLCRI-14.4-WW	A
S8	880LM /M 3000K 24V LED	LED STRIP LIGHT IN A SCREW FIXED EXTRUSION C/W OPAL DIFFUSER MOUNTED IN THE JOINERY AS PER THE ARCHITECTURAL DETAIL. PROVIDE THE S8 STRIP WITH REMOTE DALI DIMMABLE POWER SUPPLIES AS REQUIRED LOCATE THE POWER SUPPLIES IN A CONCEALED ACCESSIBLE POSITION NOTED ON THE AS CONSTRUCTED DOCUMENTS.	NATURAL	MELEC ML-ALU-1407-2M - ML-VLCRI-14.4-WW	A
S9	880LM /M 3000K 24V LED	LED STRIP LIGHT IN A SCREW FIXED EXTRUSION C/W OPAL DIFFUSER MOUNTED BEHIND THE MIRROR AS PER THE ARCHITECTURAL DETAIL. PROVIDE THE S9 STRIP WITH REMOTE DALI DIMMABLE POWER SUPPLIES AS REQUIRED LOCATE THE POWER SUPPLIES IN A CONCEALED ACCESSIBLE POSITION NOTED ON THE AS CONSTRUCTED DOCUMENTS.	WHITE	MELEC ML-ALU-1407-2M - ML-VLCRI-14.4-WW	A
S10	12W/M 2700K LED	FLEXIBLE LED ROPE FLEX SCREW FIXED RECESSED INTO THE GAMING CEILING PELMET AS PER THE ARCHITECTURAL DETAIL. PROVIDE THE S10 STRIP WITH REMOTE DALI DIMMABLE POWER SUPPLIES AS REQUIRED LOCATE THE POWER SUPPLIES IN A CONCEALED ACCESSIBLE POSITION NOTED ON THE AS CONSTRUCTED DOCUMENTS. REMOVE THE EXISTING GAMING COFFER LIGHTING	WHITE	NPA L-NF-GLOW-VWW + POWER SUPPLY & DALI CONTROLLER	A
S11	12W/M 2700K LED	FLEXIBLE LED ROPE FLEX SCREW FIXED TO THE ROOF GABLE AS PER THE EASTERN ELEVATION. PROVIDE EACH GROUP OF S11 STRIP WITH A REMOTE POWER SUPPLY LOCATE THE POWER SUPPLIES IN A CONCEALED ACCESSIBLE POSITION NOTED ON THE AS CONSTRUCTED DOCUMENTS.	WHITE	NPA L-NF-GLOW-VWW + POWER SUPPLY & DALI CONTROLLER	A
S12	12W/M 2700K LED	FLEXIBLE LED ROPE FLEX SCREW FIXED TO THE ENTRY GABLE AS PER THE NORTHERN ELEVATION. PROVIDE EACH GROUP OF S12 STRIP WITH A REMOTE POWER SUPPLY LOCATE THE POWER SUPPLIES IN A CONCEALED ACCESSIBLE POSITION NOTED ON THE AS CONSTRUCTED DOCUMENTS.	WHITE	NPA L-NF-GLOW-VWW + POWER SUPPLY	A



ELECTRICAL DESIGN GROUP

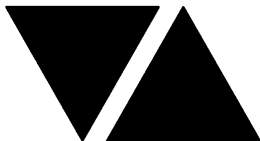
ELECTRICAL BUILDING SERVICES CONSULTANTS

P.O. Box 15, SHERWOOD Q. 4075

Phone: (07) 3278 4375 Fax: (07) 3716 0222

Web Site: www.edg.net.au Email: brisbane@edg.net.au

C3391a - WATERFRONT HOTEL, DIDDILLIBAH					C3391a-0002(C).xls
ELECTRICAL EQUIPMENT SCHEDULE					
REVISION C - 03 APRIL 2025					
THE LIGHT FITTING SUPPLIER CONTACT DETAILS MAY BE AVAILABLE ON THE EDG WEBSITE VIA THE FOLLOWING LINK www.edg.net.au/Links/Lighting.htm					
TYPE	LAMPS	DESCRIPTION	COLOUR / ACCESSORY	CATALOGUE No	REV
FS01	1W LED AT 500 CENTRES	FESTOON LIGHTING WITH 24V DC IP65 FESTOON LIGHTING TO BE FIXED TO A 316 STAINLESS STEEL WIRE SUPPORT SYSTEM. LOCATE THE DRIVER IN A CONCEALED ACCESSIBLE POSITION NOTED ON THE AS CONSTRUCTED DOCUMENTS. CONFIRM THE LENGTH AND POSITION ON SITE	BLACK CABLE AND FIXINGS 316 STAINLESS STEEL SUPPORT AND FIXINGS	FIRE FLY FFC-LS-50-24VE27-BK	A
FS02	1W LED AT 500 CENTRES	FESTOON LIGHTING WITH 24V DC IP65 FESTOON LIGHTING TO BE FIXED ALONG THE UNDERSIDE OF THE AWNING LEADING EDGE AS PER THE ARCHITECTURAL DETAIL. LOCATE THE DRIVER IN A CONCEALED ACCESSIBLE POSITION NOTED ON THE AS CONSTRUCTED DOCUMENTS.	BLACK CABLE AND FIXINGS	FIRE FLY FFC-LS-50-24VE27-BK	A
FS03	1W LED AT 500 CENTRES	FESTOON LIGHTING WITH 24V DC IP65 FESTOON LIGHTING TO BE FIXED TO A 316 STAINLESS STEEL WIRE SUPPORT SYSTEM. LOCATE THE DRIVER IN A CONCEALED ACCESSIBLE POSITION NOTED ON THE AS CONSTRUCTED DOCUMENTS. CONFIRM THE LENGTH AND POSITION ON SITE	BLACK CABLE AND FIXINGS 316 STAINLESS STEEL SUPPORT AND FIXINGS	FIRE FLY FFC-LS-50-24VE27-BK	A
E1	LED	EMERGENCY LIGHT: RECESSED NON-MAINTAINED EMERGENCY LIGHT. AS2293 CLASSIFICATION C0-D63 - C90-D63.	WHITE	CLEVERTRONICS LLIFE	A
E2	LED	EMERGENCY LIGHT: SURFACE MOUNTED NON-MAINTAINED EMERGENCY LIGHT. AS2293 CLASSIFICATION C0-D63 - C90-D63.	WHITE	CLEVERTRONICS CLIFE-SM	A
E3	LED	EMERGENCY LIGHT: RECESSED NON-MAINTAINED EMERGENCY LIGHT. AS2293 CLASSIFICATION C0-D63 - C90-D63.	BLACK	CLEVERTRONICS LLIFE BLK	A
EX	LED	EXIT LIGHT: MAINTAINED 24M VIEWING DISTANCE EXIT LIGHT C/W DIFFUSERS & DIRECTIONAL ARROWS AS SHOWN. CEILING SURFACE MOUNT OR WALL MOUNT BETWEEN 2100mm & 2700mm AFFL IF THERE IS NO VERTICAL SURFACE TO MOUNT THE FITTING ON WITHIN THIS RANGE CONFIRM THE MOUNTING HEIGHT WITH THE ENGINEER. AS2293 CLASSIFICATION C0-D1.25- C90-D2	WHITE	CLEVERTRONICS LUBPRO-SM	A
EX BLACK	LED	EXIT LIGHT: MAINTAINED 24M VIEWING DISTANCE EXIT LIGHT C/W DIFFUSERS & DIRECTIONAL ARROWS AS SHOWN. CEILING SURFACE MOUNT OR WALL MOUNT BETWEEN 2100mm & 2700mm AFFL IF THERE IS NO VERTICAL SURFACE TO MOUNT THE FITTING ON WITHIN THIS RANGE CONFIRM THE MOUNTING HEIGHT WITH THE ENGINEER. AS2293 CLASSIFICATION C0-D1.25- C90-D2	BLACK	CLEVERTRONICS LUBPRO-SM BLACK	A



ELECTRICAL DESIGN GROUP

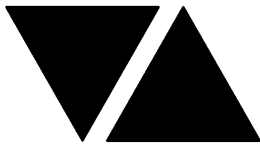
ELECTRICAL BUILDING SERVICES CONSULTANTS

P.O. Box 15, SHERWOOD Q. 4075

Phone: (07) 3278 4375 Fax: (07) 3716 0222

Web Site: www.edg.net.au Email: brisbane@edg.net.au

C3391a - WATERFRONT HOTEL, DIDDILLIBAH					C3391a-0002(C).xls
ELECTRICAL EQUIPMENT SCHEDULE					
REVISION C - 03 APRIL 2025					
THE LIGHT FITTING SUPPLIER CONTACT DETAILS MAY BE AVAILABLE ON THE EDG WEBSITE VIA THE FOLLOWING LINK www.edg.net.au/Links/Lighting.htm					
TYPE	LAMPS	DESCRIPTION	COLOUR / ACCESSORY	CATALOGUE No	REV
F01	8FT CEILING FAN	CEILING FAN C/W CUSTOM MOUNTING TO SUIT THE BUILDING STRUCTURE / CEILING. PROVIDE EACH F01 WITH A DEDICATED WIRED CONTROLLER	STEALTH BLACK FAN / SUPPORT WHITE CONTROLLER	BIG ASS FANS ESSENCE	A
F02	72 INCH CEILING FAN	CEILING FAN C/W CUSTOM MOUNTING TO SUIT THE BUILDING STRUCTURE / CEILING. PROVIDE EACH F02 WITH A DEDICATED WIRED CONTROLLER	BLACK FAN / SUPPORT WHITE CONTROLLER	BIG ASS FANS 16	A
FC1		DINING FAN CONTROLS	WHITE	BIG ASS FANS	A
FC2		DRINKING FAN CONTROLS	WHITE	BIG ASS FANS	A
HEATER TYPE 1 (HL01)		CEILING MOUNTED 318D X 216 H PENDANT HEAT LAMP C/W IR LAMP SUSPENDED AS PER THE ARCHITECTURAL DETAIL.	BLACK	HATCO DL-760 PLUS 100W IR LAMP	A
HEATER TYPE 2 (HL02)		LINEAR HEAT LAMP C/W CUSTOM SUPPORT TO FACILITATE MOUNTING UNDER THE PASS OUT SHELF 700 W 900 ALL CABLING IS TO BE CONCEALED	SILVER	ROBAND HQ900E	A
EXISTING HEATER TYPE (HR01)		EXISTING HEATER TO BE RETAINED AND RESUPPLIED AS INDICATED.			A
CHANNEL x		CONTROL CHANNEL WITH A NUMERICAL REFERENCE. REFER TO THE POWER AND LIGHTING CONTROL SCHEMATIC / SCHEDULE			A
ONE-WAY LIGHT SWITCH		ONE-WAY LIGHT SWITCH C/W CIRCUIT IDENTIFICATION ON THE FACEPLATE BEHIND THE SURROUND MOUNTED AT 1000mm AFFL UNLESS NOTED OTHERWISE.	WHITE	CLIPSAL C2000 SERIES 30USM	A
TWO-WAY LIGHT SWITCH		TWO-WAY LIGHT SWITCH C/W CIRCUIT IDENTIFICATION ON THE FACEPLATE BEHIND THE SURROUND MOUNTED AT 1000mm AFFL UNLESS NOTED OTHERWISE.	WHITE	CLIPSAL C2000 SERIES 30USM	A
LIGHTING CONTROL SWITCH PANEL (SPx)		6-BUTTON PROGRAMMABLE SWITCH PANEL C/W CENTRAL LCD DISPLAY MOUNTED AT 1000mm AFFL UNLESS NOTED OTHERWISE.	ALUMINIUM	DYNALITE ANTUMBRA DISPLAY	A
HAND DRYER CONNECTION (HD)		EXISTING HAND DRYER POWER SUPPLIED TO BE RETAINED WITH THE CIRCUITS RESUPPLIED AS NOTED ON THE SWITCHBOARD ZONE DRAWING			A



ELECTRICAL DESIGN GROUP

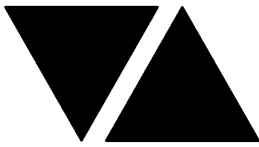
ELECTRICAL BUILDING SERVICES CONSULTANTS

P.O. Box 15, SHERWOOD Q. 4075

Phone: (07) 3278 4375 Fax: (07) 3716 0222

Web Site: www.edg.net.au Email: brisbane@edg.net.au

C3391a - WATERFRONT HOTEL, DIDDILLIBAH					C3391a-0002(C).xls
ELECTRICAL EQUIPMENT SCHEDULE					
REVISION C - 03 APRIL 2025					
THE LIGHT FITTING SUPPLIER CONTACT DETAILS MAY BE AVAILABLE ON THE EDG WEBSITE VIA THE FOLLOWING LINK www.edg.net.au/Links/Lighting.htm					
TYPE	LAMPS	DESCRIPTION	COLOUR / ACCESSORY	CATALOGUE No	REV
EXIST		EXISTING OUTLET TO BE RETAINED WITH THE CIRCUIT RESUPPLIED AS NOTED ON THE SWITCHBOARD ZONE DRAWING. EXISTING POWER OUTLET FACEPLATE TO BE CHANGED TO THE COLOUR BLACK (BK) WHERE NOTED.			A
SINGLE POWER OUTLET		SINGLE POWER OUTLET C/W CIRCUIT IDENTIFICATION ON THE FACEPLATE BEHIND THE SURROUND MOUNT AT 300mm AFFL U.N.O. RATING 10A U.N.O.	WHITE UNLESS NOTED AS BLACK (BK)	CLIPSAL C2000 SERIES	A
SINGLE POWER OUTLET AUTO DOOR (AD)		SINGLE POWER OUTLET C/W CIRCUIT IDENTIFICATION ON THE FACEPLATE BEHIND THE SURROUND MOUNTED CONCEALED WITHIN THE AUTO DOOR MULLION. RATING 10A U.N.O.	WHITE	CLIPSAL C2000 SERIES	A
DOUBLE POWER OUTLET		DOUBLE POWER OUTLET C/W CIRCUIT IDENTIFICATION ON THE FACEPLATE BEHIND THE SURROUND MOUNT AT 300mm AFFL U.N.O. RATING 10A U.N.O.	WHITE UNLESS NOTED AS BLACK (BK)	CLIPSAL C2000 SERIES	A
SPECIAL PURPOSE OUTLET		SPECIAL PURPOSE OUTLET TYPE AS NOTED. MOUNT AT 1350mm AFFL U.N.O. RATING 20A U.N.O. CONNECT TO EQUIPMENT VIA FLEXIBLE CONDUIT.			A
SIGN CONNECTION		COORDINATE THE LOCATION AND CONNECTION WITH THE SIGN CONTRACTOR ENSURING THE GPO / ISOLATORS ARE PROVIDED WITH APPROPRIATE WEATHER PROTECTION AND ARE CONCEALED FROM VIEW.			A
SINGLE-PHASE ISOLATOR		SINGLE-PHASE WEATHERPROOF ISOLATOR. MOUNT AT 1350mm AFFL U.N.O. RATING 20A U.N.O. CONNECT TO EQUIPMENT VIA FLEXIBLE CONDUIT.	-	CLIPSAL WHT20	A
THREE-PHASE ISOLATOR		THREE-PHASE WEATHERPROOF ISOLATOR. MOUNT AT 1350mm AFFL U.N.O. RATING 20A U.N.O. CONNECT TO EQUIPMENT VIA FLEXIBLE CONDUIT.	-	CLIPSAL WHT35	A
DB-A		REMOVE THE EXISTING DB-A AND RECONNECT ALL REMAINING CIRCUITS TO DB-1 WITH NEW SWITCHGEAR AND CONTROLS MATCHING THE EXISTING IN CAPACITY AND FUNCTION.			A
DB-B		EXISTING DISTRIBUTION BOARD DB-B PART OF THE MSB IS TO REMAIN AS IS. REMOVE ALL SWITCHGEAR MADE REDUNDANT BY THE WORKS AND UPDATE ALL LABELS AT PRACTICAL COMPLETION			A
DB-C		EXISTING EXTERNAL MECHANICAL SERVICES DISTRIBUTION BOARD TO REMAIN AS IS			A
DB-D		REPLACE THE EXISTING GAMING DISTRIBUTION BOARD DB-D AND THE ASSOCIATED LIGHTING CONTROL SYSTEM AS PER THE DB-D SCHEDULE AND NOTES. REMOVE ALL CIRCUITS MADE REDUNDANT. RECONNECT ALL EXISTING CIRCUITS THAT REMAIN WITH NEW SWITCHGEAR AND CONTROLS THAT MATCH THE EXISTING IN CAPACITY AND FUNCTION. RECONNECT THE EXISTING DB-D SUBMAIN TO THE NEW DB-D. ARRANGE WITH THE OPERATOR TO REMOVE THE EXISTING SHELVING AND ITEMS STORED IN FRONT OF DB-D.			A
DB-F		REMOVE THE EXISTING DB-F AND RECONNECT ALL REMAINING CIRCUITS TO DB-1 WITH NEW SWITCHGEAR AND CONTROLS MATCHING THE EXISTING IN CAPACITY AND FUNCTION.			A



ELECTRICAL DESIGN GROUP

ELECTRICAL BUILDING SERVICES CONSULTANTS

P.O. Box 15, SHERWOOD Q. 4075

Phone: (07) 3278 4375 Fax: (07) 3716 0222

Web Site: www.edg.net.au Email: brisbane@edg.net.au

C3391a - WATERFRONT HOTEL, DIDDILLIBAH

C3391a-0002(C).xls

ELECTRICAL EQUIPMENT SCHEDULE

REVISION C - 03 APRIL 2025

THE LIGHT FITTING SUPPLIER CONTACT DETAILS MAY BE AVAILABLE ON THE EDG WEBSITE VIA THE FOLLOWING LINK
www.edg.net.au/Links/Lighting.htm

TYPE	LAMPS	DESCRIPTION	COLOUR / ACCESSORY	CATALOGUE No	REV
DB-F1		REMOVE THE EXISTING DB-F1 AND RECONNECT ALL REMAINING CIRCUITS TO DB-1 WITH NEW SWITCHGEAR AND CONTROLS MATCHING THE EXISTING IN CAPACITY AND FUNCTION.			A
DB-G		REPLACE THE EXISTING GAMING DISTRIBUTION BOARD DB-G AND THE ASSOCIATED LIGHTING CONTROL SYSTEM AS PER THE DB-G SCHEDULE AND NOTES. REMOVE ALL CIRCUITS MADE REDUNDANT. RECONNECT ALL EXISTING CIRCUITS THAT REMAIN WITH NEW SWITCHGEAR AND CONTROLS THAT MATCH THE EXISTING IN CAPACITY AND FUNCTION. PROVIDE DB-G WITH A NEW SUBMAIN FROM THE MSB. ARRANGE WITH THE OPERATOR TO REMOVE THE EXISTING ITEMS STORED IN FRONT OF DB-G.			A
DB-S		REMOVE THE EXISTING DB-S AND RECONNECT ALL REMAINING CIRCUITS TO DB-1 WITH NEW SWITCHGEAR AND CONTROLS MATCHING THE EXISTING IN CAPACITY AND FUNCTION.			A
DB-T		REMOVE THE EXISTING DB-T AND RECONNECT ALL REMAINING CIRCUITS TO DB-1 WITH NEW SWITCHGEAR AND CONTROLS MATCHING THE EXISTING IN CAPACITY AND FUNCTION.			A
DB-1		DISTRIBUTION BOARD DB-1 AS PER THE DB-1 SCHEMATIC SCHEDULE AND NOTES. PROVIDE A SHOP DRAWING OF DB-1 FOR APPROVAL. ARRANGE WITH THE OPERATOR TO REMOVE THE EXISTING ITEMS STORED IN FRONT OF THE PROPOSED DB-1 LOCATION.			A
MSB		EXISTING MAIN SWITCHBOARD TO BE PROVIDED WITH A THREE PHASE 250 AMP MCCB TO SUPPLY DB-1 AND A 3 PHASE 63 AMP MCCB TO SUPPLY DB-G. REMOVE ALL SWITCHGEAR MADE REDUNDANT BY THE WORKS AND UPDATE ALL LABELS AT PRACTICAL COMPLETION			A
PR CONT		EXISTING PR CONT UNIT TO REMAIN AS IS			A



ELECTRICAL DESIGN GROUP

ELECTRICAL BUILDING SERVICES CONSULTANTS

P.O. Box 15, SHERWOOD Q. 4075

Phone: (07) 3278 4375 Fax: (07) 3716 0222

Web Site: www.edg.net.au Email: brisbane@edg.net.au

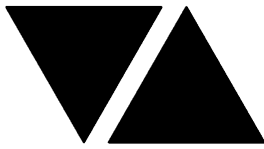
C3391a - WATERFRONT HOTEL, DIDDILLIBAH

C3391a-0004(B).xls

LIGHTING CONTROL SCHEDULE

REVISION B - 03 APRIL 2025

MISCELLANEOUS EQUIPMENT					REV
ITEM	DESCRIPTION				A
SP1	AS DETAILED IN THE EQUIPMENT SCHEDULE 6-BUTTON PROGRAMMABLE SWITCH PANEL C/W CENTRAL LCD DISPLAY DYNALITE ANTUMBRA DISPLAY ALUMINIUM				A
SP2	AS DETAILED IN THE EQUIPMENT SCHEDULE 6-BUTTON PROGRAMMABLE SWITCH PANEL C/W CENTRAL LCD DISPLAY DYNALITE ANTUMBRA DISPLAY ALUMINIUM				A
SP3	AS DETAILED IN THE EQUIPMENT SCHEDULE 6-BUTTON PROGRAMMABLE SWITCH PANEL C/W CENTRAL LCD DISPLAY DYNALITE ANTUMBRA DISPLAY ALUMINIUM				A
SP4	AS DETAILED IN THE EQUIPMENT SCHEDULE 6-BUTTON PROGRAMMABLE SWITCH PANEL C/W CENTRAL LCD DISPLAY DYNALITE ANTUMBRA DISPLAY ALUMINIUM				A
SP5	AS DETAILED IN THE EQUIPMENT SCHEDULE 6-BUTTON PROGRAMMABLE SWITCH PANEL C/W CENTRAL LCD DISPLAY DYNALITE ANTUMBRA DISPLAY ALUMINIUM				A
PE CELL	PROGRAMMABLE PE CELL DUS 90CS CONFIRM THE LOCATION ON SITE WITH THE ARCHITECT				A
TIME CLOCK	PROGRAMMABLE TIME CLOCK ENVISION GATEWAY PDEG C/W INTERNET ACCESS LOCATE DB-B				A
CONTROL MODULE 1					A
TYPE:		DYNALITE DDRC1220FR-GL		A	
DESCRIPTION		12CH 20 A FEEDTHROUGH RELAY CONTROLLER			A
LOCATION		DIN RAIL MOUNTED WITHIN DB-1			A
BUS:		A			A
CHANNEL	CONTROL	DESCRIPTION			A
		LOCATION	CIRCUIT	USE	A
1-1	SWITCHED	ROOF	DB-1 - L3	S11	A
1-2	SWITCHED / CONTACTORS	DECK	REFER DB-1 SCHEDULE	HEATER	A
1-3	SWITCHED	DECK	DB-1 - L35	HEATERS	A
1-4	SWITCHED	ENTRY	DB-1 - L4	FS03 S12	A
1-5	SWITCHED		DB-1 - L18	FS01	A
1-6	SWITCHED		DB-1 - L16	FS01	A
1-7	SWITCHED		DB-1 - L16	FS01	A
1-8	SWITCHED		DB-1 - L14	SL03	A
1-9	SWITCHED		DB-1 - L14	SL03	A
1-10	SWITCHED		DB-1 - L14	SL03	A
1-11	SWITCHED	DRINKING	DB-1 - L11	FS02	A
1-12	SWITCHED	ENTRY	DB-1 - L5	FS01	A
CONTROL MODULE 2					A
TYPE:		DYNALITE DDMC802		A	
DESCRIPTION		8CH MODULAR CONTROLLER			A
LOCATION		DIN RAIL MOUNTED WITHIN DB-1			A
BUS:		A			A
CHANNEL	CONTROL	DESCRIPTION			A
		LOCATION	CIRCUIT	USE	A
1-13	DGTM202		DB-1 -L10	PD01	A
1-14				PD01	A
1-15	DGTM202			PD01	A
1-16				WL02	A
1-17	DGTM202			WL02	A
1-18					A
1-19					A
1-20					A



ELECTRICAL DESIGN GROUP

ELECTRICAL BUILDING SERVICES CONSULTANTS

P.O. Box 15, SHERWOOD Q. 4075

Phone: (07) 3278 4375 Fax: (07) 3716 0222

Web Site: www.edg.net.au Email: brisbane@edg.net.au

C3391a - WATERFRONT HOTEL, DIDDILLIBAH

C3391a-0004(B).xls

LIGHTING CONTROL SCHEDULE

REVISION B - 03 APRIL 2025

CONTROL MODULE 3					A
TYPE:		DYNALITE DDMC802			A
DESCRIPTION		8CH MODULAR CONTROLLER			A
LOCATION		DIN RAIL MOUNTED WITHIN DB-1			A
BUS:		A			A
CHANNEL	CONTROL	DESCRIPTION			A
		LOCATION	CIRCUIT	USE	A
1-21	DGTM202		DB-1 -L22	WL02	A
1-22				WL03	A
1-23	DGTM202			WL03	A
1-24				WL01	A
1-25	DGTM202			WL02	A
1-26				WL01 WL02	A
1-27	DGTM202				B
1-28				WL05	A
CONTROL MODULE 4					
TYPE:		DYNALITE DDMC802			A
DESCRIPTION		8CH MODULAR CONTROLLER			A
LOCATION		DIN RAIL MOUNTED WITHIN DB-1			A
BUS:		A			A
CHANNEL	CONTROL	DESCRIPTION			A
		LOCATION	CIRCUITS	USE	A
1-29	DGTM202		DB-1 -L19	WL02	A
1-30				WL01	A
1-31	DGRM204			SIGN	A
1-32					A
1-33	DGTM202			WL03	A
1-34				WL02	A
1-35	DGTM202			WL03	A
1-36					A
CONTROL MODULE 5					
TYPE:		DYNALITE DDBC1200			A
DESCRIPTION		12CH BOARD CAST DALI CONTROLLER			A
LOCATION		DIN RAIL MOUNTED WITHIN DB-1			A
BUS:		A			A
CHANNEL	CONTROL	DESCRIPTION			A
		LOCATION	CIRCUITS	USE	A
1-37	DALI DIM		DB-1 -L9	RD01	B
1-38	DALI DIM		DB-1 -L9	SL02	A
1-39	DALI DIM		DB-1 -L9	PD02	A
1-40	DALI DIM		DB-1 -L9	SL02	A
1-41	DALI DIM		DB-1 -L9	SL02	A
1-42	DALI DIM		DB-1 -L9	SL02	A
1-43	DALI DIM	KIDS	DB-1 -L9	SL02	A
1-44	DALI DIM	SERVERY	DB-1 -L7	RT01 RT02	A
1-45	DALI DIM		DB-1 -L7	RD02	A
1-46	DALI DIM		DB-1 -L7	RD02	A
1-47	DALI DIM	DECK	DB-1 -L17	RD02	A
1-48	DALI DIM	DECK	DB-1 -L17	RD02	A



ELECTRICAL DESIGN GROUP

ELECTRICAL BUILDING SERVICES CONSULTANTS

P.O. Box 15, SHERWOOD Q. 4075

Phone: (07) 3278 4375 Fax: (07) 3716 0222

Web Site: www.edg.net.au Email: brisbane@edg.net.au

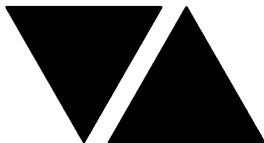
C3391a - WATERFRONT HOTEL, DIDDILLIBAH

C3391a-0004(B).xls

LIGHTING CONTROL SCHEDULE

REVISION B - 03 APRIL 2025

CONTROL MODULE 6					A
TYPE:		DYNALITE DDBC1200			A
DESCRIPTION		12CH BOARD CAST DALI CONTROLLER			A
LOCATION		DIN RAIL MOUNTED WITHIN DB-1			A
BUS:		A			A
CHANNEL	CONTROL	DESCRIPTION			A
		LOCATION	CIRCUITS	USE	A
1-49	DALI DIM	BAR	DB-1 -L7	S7	A
1-50	DALI DIM		DB-1 -L12	RD01	A
1-51	DALI DIM		DB-1 -L12	SL02	A
1-52	DALI DIM	PWD	DB-1 -L12	RD01	A
1-53	DALI DIM	ENTRY	DB-1 -L5	RD01	A
1-54	DALI DIM	ENTRY	DB-1 -L5	RD02	A
1-55	DALI DIM	AMENITY	DB-1 -L6	RD01	A
1-56	DALI DIM		DB-1 -L5	RD02	A
1-57	DALI DIM				A
1-58	DALI DIM				A
1-59	DALI DIM				A
1-60	DALI DIM				A
CONTROL MODULE 7					A
TYPE:		DYNALITE DDBC1200			A
DESCRIPTION		12CH BOARD CAST DALI CONTROLLER			A
LOCATION		DIN RAIL MOUNTED WITHIN DB-1			A
BUS:		A			A
CHANNEL	CONTROL	DESCRIPTION			A
		LOCATION	CIRCUITS	USE	A
1-61	DALI DIM		DB-1 -L15	RD01	A
1-62	DALI DIM		DB-1 -L15	RD01	A
1-63	DALI DIM		DB-1 -L15	RD01	A
1-64	DALI DIM		DB-1 -L16	RD03	A
1-65	DALI DIM		DB-1 -L11	SL02	A
1-66	DALI DIM		DB-1 -L11	PD02	A
1-67	DALI DIM		DB-1 -L14	RD02	A
1-68	DALI DIM		DB-1 -L14	RD01	B
1-69	DALI DIM		DB-1 -L14	RD02	A
1-70	DALI DIM		DB-1 -L14	RD01	B
1-71	DALI DIM		DB-1 -L11	SL02	A
1-72	DALI DIM	AMENITY	DB-1 -L13	RD01	A



ELECTRICAL DESIGN GROUP

ELECTRICAL BUILDING SERVICES CONSULTANTS

P.O. Box 15, SHERWOOD Q. 4075

Phone: (07) 3278 4375 Fax: (07) 3716 0222

Web Site: www.edg.net.au Email: brisbane@edg.net.au

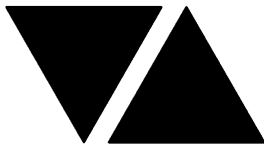
C3391a - WATERFRONT HOTEL, DIDDILLIBAH

C3391a-0004(B).xls

LIGHTING CONTROL SCHEDULE

REVISION B - 03 APRIL 2025

CONTROL MODULE 8					A
TYPE:		DYNALITE DDBC1200			A
DESCRIPTION		12CH BOARD CAST DALI CONTROLLER			A
LOCATION		DIN RAIL MOUNTED WITHIN DB-1			A
BUS:		A			A
CHANNEL	CONTROL	DESCRIPTION			A
		LOCATION	CIRCUITS	USE	A
1-73	DALI DIM		DB-1 -L11	S4	A
1-74	DALI DIM		DB-1 -L11	RD04	A
1-75	DALI DIM		DB-1 -L20	GL01	A
1-76	DALI DIM		DB-1 -L5	S1	A
1-77	DALI DIM		DB-1 -L12	S1	A
1-78	DALI DIM		DB-1 -L12	S1	A
1-79	DALI DIM		DB-1 -L12	S2	A
1-80	DALI DIM		DB-1 -L7	S5	A
1-81	DALI DIM		DB-1 -L7	S2	A
1-82	DALI DIM		DB-1 -L7	S2	A
1-83	DALI DIM		DB-1 -L20	GL02	A
1-84	DALI DIM		DB-1 -L20	S3	A
CONTROL MODULE 9					A
TYPE:		DYNALITE DDBC1200			A
DESCRIPTION		12CH BOARD CAST DALI CONTROLLER			A
LOCATION		DIN RAIL MOUNTED WITHIN DB-1			A
BUS:		A			A
CHANNEL	CONTROL	DESCRIPTION			A
		LOCATION	CIRCUITS	USE	A
1-85	DALI DIM		DB-1 -L20	S6	A
1-86	DALI DIM		DB-1 -L20	GL02	A
1-87	DALI DIM		DB-1 -L20	GL02	A
1-88	DALI DIM		DB-1 -L23	GL02	A
1-89	DALI DIM		DB-1 -L23	GL02	A
1-90	DALI DIM		DB-1 -L11	S1	A
1-91	DALI DIM				A
1-92	DALI DIM				A
1-93	DALI DIM				A
1-94	DALI DIM				A
1-95	DALI DIM				A
1-96	DALI DIM				A



ELECTRICAL DESIGN GROUP

ELECTRICAL BUILDING SERVICES CONSULTANTS

P.O. Box 15, SHERWOOD Q. 4075

Phone: (07) 3278 4375 Fax: (07) 3716 0222

Web Site: www.edg.net.au Email: brisbane@edg.net.au

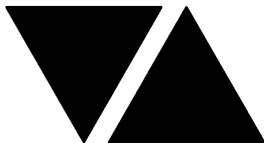
C3391a - WATERFRONT HOTEL, DIDDILLIBAH

C3391a-0004(B).xls

LIGHTING CONTROL SCHEDULE

REVISION B - 03 APRIL 2025

CONTROL MODULE 10					A
TYPE:		DYNALITE DDMC802			A
DESCRIPTION		8CH MODULAR CONTROLLER			A
LOCATION		DIN RAIL MOUNTED WITHIN DB-D			A
BUS:		A			A
CHANNEL	CONTROL	DESCRIPTION			A
		LOCATION	CIRCUITS	USE	A
D-1	DGRM204	GAMING	REFER DB-D SCHEDULE	SIGNS VIA CONTACTOR	A
D-2		GAMING	DB-D - L3	SIGN	A
D-3	DGTM202	GAMING		PD03	A
D-4		GAMING			B
D-5	DGFM102	GAMING		WL06	B
D-6		GAMING		WL07	B
D-7	DGFM102	GAMING		WL07	B
D-8					B
CONTROL MODULE 11					
TYPE:		DYNALITE DDBC1200			A
DESCRIPTION		12CH BOARD CAST DALI CONTROLLER			A
LOCATION		DIN RAIL MOUNTED WITHIN DB-D			A
BUS:		A			A
CHANNEL	CONTROL	DESCRIPTION			A
		LOCATION	CIRCUITS	USE	A
D-13	DALI DIM	GAMING	DB-D - L1	RD02 S9	A
D-14	DALI DIM	GAMING	DB-D - L2	RD02	A
D-15	DALI DIM	GAMING	DB-D - L2	S10 RD02	A
D-16	DALI DIM	GAMING	DB-D - L2	RD02	A
D-17	DALI DIM	GAMING	DB-D - L4	RD02	A
D-18	DALI DIM	GAMING	DB-D - L6	RD02	A
D-19	DALI DIM	GAMING	DB-D - L6	RD02	A
D-20	DALI DIM	GAMING	DB-D - L6	S2	A
D-21	DALI DIM	GAMING	DB-D - L6	S1	A
D-22	DALI DIM				A
D-23	DALI DIM				A
D-24	DALI DIM				A
CONTROL MODULE 12					A
TYPE:		DYNALITE DDMC802			A
DESCRIPTION		8CH MODULAR CONTROLLER			A
LOCATION		DIN RAIL MOUNTED WITHIN DB-G			A
BUS:		A			A
CHANNEL	CONTROL	DESCRIPTION			A
		LOCATION	CIRCUITS	USE	A
G-1	DGTM202	FUNCTION ROOM	DB-G - L2	WL02	A
G-2		FUNCTION ROOM		WL02	A
G-3	DGTM202	FUNCTION ROOM		WL02	A
G-4		FUNCTION ROOM		WL01	A
G-5	DGTM202	FUNCTION ROOM		WL02	A
G-6		FUNCTION ROOM		PD01	A
G-7	DGTM202	FUNCTION ROOM		WL01	A
G-8		FUNCTION ROOM			A



ELECTRICAL DESIGN GROUP

ELECTRICAL BUILDING SERVICES CONSULTANTS

P.O. Box 15, SHERWOOD Q. 4075

Phone: (07) 3278 4375 Fax: (07) 3716 0222

Web Site: www.edg.net.au Email: brisbane@edg.net.au

C3391a - WATERFRONT HOTEL, DIDDILLIBAH

C3391a-0004(B).xls

LIGHTING CONTROL SCHEDULE

REVISION B - 03 APRIL 2025

CONTROL MODULE 13					A
TYPE:		DYNALITE DDBC1200			A
DESCRIPTION		12CH BOARD CAST DALI CONTROLLER			A
LOCATION		DIN RAIL MOUNTED WITHIN DB-G			A
BUS:		A			A
CHANNEL	CONTROL	DESCRIPTION			A
		LOCATION	CIRCUITS	USE	A
G-13	DALI DIM	FUNCTION ROOM	DB-G - L1	RD01	A
G-14	DALI DIM	FUNCTION ROOM	DB-G - L6	RD01	A
G-15	DALI DIM	FUNCTION ROOM	DB-G - L4	RD01	A
G-16	DALI DIM	FUNCTION ROOM	DB-G - L5	RD01	A
G-17	DALI DIM	FUNCTION ROOM	DB-G - L3	S7	A
G-18	DALI DIM	FUNCTION ROOM	DB-G - L3	RD01	B
G-19	DALI DIM	FUNCTION ROOM	DB-G - L3	S1	A
G-20	DALI DIM	FUNCTION ROOM	DB-G - L3	S2	A
G-21	DALI DIM	FUNCTION ROOM	DB-G - L3	FS01	A
G-22	DALI DIM				A
G-23	DALI DIM				A

C3391a - WATERFRONT HOTEL, DIDDILLIBAH

C3391a-0005(A).xls

DISTRIBUTION BOARD DB-D

REVISION A - 22 NOVEMBER 2024

FAULT CURRENT: 6KA						MAIN SWITCH: 250A NON AUTO LOAD BREAK		REV
CHASSIS SIZE: 60 POLE								A
CHASSIS RATING: 250A								A
PHASES: 3								A
PROVIDE THE DB WITH A FULL WIDTH EMPTY DIN RAIL TO ACCOMMODATE FUTURE CONTACTORS AND CONTROLS IN ADDITION TO THE CONTROLS INCLUDING THE DYNALITE EQUIPMENT PROVIDED AS PART OF THE INITIAL WORKS. PROVIDE THE DB WITH AN AS2293 EMERGENCY LIGHTING CONTROL SYSTEM TO CONTROL THE ASSOCIATED EMERGENCY LIGHTS. PROVIDE THE DB WITH SURGE PROTECTION. RECONNECT ALL OF THE EXISTING DB-D CIRCUITS THAT REMAIN AND THE CIRCUITS WITHIN THE AREA NOMINATED AS DB-D ON THE SWITCHBOARD ZONE PLAN TO THE NEW DB-D WITH NEW SWITCHGEAR AND CONTROLS THAT HAS THE SAME CAPACITY AND FUNCTION AS THE ORIGINAL. RECONNECT THE EXISTING SUPPLY SUBMAIN. UPDATE THE SCHEDULE AT PRACTICAL COMPLETION TO INCLUDE THE CIRCUIT USE AND LOCATION.								A
CIRC	PH	CIRCUIT BREAKER (amps)	CONTROL EQUIPMENT	CABLE SIZE (mm ²)	LOCATION	CIRCUIT USE	A	
							A	
P1	1	20	RCBO	2.5	GAMING	POKER MACHINE	A	
P2	1	20	RCBO	2.5	GAMING	POKER MACHINE	A	
P3	1	20	RCBO	2.5	GAMING	POKER MACHINE	A	
P4	1	20	RCBO	2.5	GAMING	POKER MACHINE	A	
P5	1	20	RCBO	2.5	GAMING	POKER MACHINE	A	
P6	1	20	RCBO	2.5	GAMING	POKER MACHINE	A	
P7	1	20	RCBO	2.5	GAMING	POKER MACHINE	A	
P8	1	20	RCBO	2.5	GAMING	POKER MACHINE	A	
P9	1	20	RCBO	2.5	GAMING	POKER MACHINE	A	
P10	1	20	RCBO	2.5	GAMING	MODEM	A	
P11	1	20	RCBO	2.5	GAMING	SIGN	A	
P12	1	20	RCBO	2.5	GAMING	SIGN	A	
P13	1	20	RCBO	2.5	GAMING	SIGN	A	
P14	1	20	RCBO	2.5	GAMING	CRT	A	
P15	1	20	RCBO	2.5	GAMING	TV	A	
P16	1	20	RCBO	2.5	GAMING	VENDING	A	
P17	1	20	RCBO	2.5	GAMING	CLEANING	A	
							A	
							A	
							A	
							A	
							A	
							A	
L1	1	20	RCBO	2.5	GAMING	LIGHTS	A	
L2	1	20	RCBO	2.5	GAMING	LIGHTS	A	
L3	1	20	RCBO	2.5	GAMING	SIGN	A	
L4	1	20	RCBO	2.5	GAMING	LIGHTS	A	
L5	1	20	RCBO	2.5	GAMING	LIGHTS	A	
L6	1	20	RCBO	2.5	GAMING	BAR STRIP LIGHTS	A	
							A	
							A	
							A	
							A	



ELECTRICAL DESIGN GROUP

ELECTRICAL BUILDING SERVICES CONSULTANTS

P.O. Box 15, SHERWOOD Q. 4075

Phone: (07) 3278 4375

Website: www.edg.net.au Email: brisbane@edg.net.au

C3391a - WATERFRONT HOTEL, DIDDILLIBAH

C3391a-0006(A).xls

DISTRIBUTION BOARD DB-1

REVISION A - 22 NOVEMBER 2024

FAULT CURRENT: 6KA							REV
CHASSIS RATING: 250A							A
PHASES: 3							A
PROVIDE DB-1 AS PER THE DB-1 SCHEMATIC. PROVIDE THE DB WITH A FULL WIDTH EMPTY DIN RAIL TO ACCOMMODATE FUTURE CONTACTORS AND CONTROLS IN ADDITION TO THE CONTROLS INCLUDING THE DYNALITE EQUIPMENT PROVIDED AS PART OF THE INITIAL WORKS. PROVIDE THE DB WITH AN AS2293 EMERGENCY LIGHTING CONTROL SYSTEM TO CONTROL THE ASSOCIATED EMERGENCY LIGHTS. PROVIDE THE DB WITH SURGE PROTECTION. RECONNECT ALL OF THE EXISTING DB-T, DB-S, DB-A, DB-F AND DB-F1 CIRCUITS THAT REMAIN AND THE CIRCUITS WITHIN THE AREA NOMINATED AS DB-1 ON THE SWITCHBOARD ZONE PLAN TO THE NEW DB-1 WITH NEW SWITCHGEAR AND CONTROLS THAT HAS THE SAME CAPACITY AND FUNCTION AS THE ORIGINAL. UPDATE THE SCHEDULE AT PRACTICAL COMPLETION TO INCLUDE THE CIRCUIT USE AND LOCATION.							A
CIRC	PH	CIRCUIT BREAKER (amps)	CONTROL EQUIPMENT	CABLE SIZE (mm ²)	LOCATION	CIRCUIT USE	A
P1	3	20	RCBO	2.5	EXTERNAL	KEG ROOM	A
P2	1	20	RCBO	2.5	KEG ROOM	KEG ROOM	A
P3	1	20	RCBO	2.5	KITCHEN	MW	A
P4	1	20	RCBO	2.5	KITCHEN	MW	A
P5	3	40	RCBO	6.0	KITCHEN	22KW COMBI	A
P6	1	20	RCBO	2.5	KITCHEN	REF	A
P7	1	20	RCBO	2.5	DINING	ATM	A
P8	1	20	RCBO	2.5	DINING	CLEANING	A
P9	1	20	RCBO	2.5	DINING	FIRE	A
P10	1	20	RCBO	2.5	DINING	MEET AND GREET	A
P11	1	20	RCBO	2.5	DRINKING	CLEANING	A
P12	1	20	RCBO	2.5	DRINKING	TV	A
P13	3	20	RCBO	2.5	ROOF	AC	A
P14	3	20	RCBO	2.5	ROOF	AC	A
P15	3	20	RCBO	2.5	ROOF	AC	A
P16	1	20	RCBO	2.5	SERVERY	BAINE MARIE	A
P17	1	20	RCBO	2.5	SERVERY	REF	A
P18	1	20	RCBO	2.5	SERVERY	BAINE MARIE	A
P19	1	20	RCBO	2.5	DINING BAR	POS	A
P20	1	20	RCBO	2.5	DINING BAR	GLASS WASHER	A
P21	1	20	RCBO	2.5	DINING BAR	GPOs	A
P22	1	20	RCBO	2.5	DRINKING BAR	GPOs	A
P23	1	20	RCBO	2.5	DRINKING BAR	REF	A
							A
							A
							A



ELECTRICAL DESIGN GROUP

ELECTRICAL BUILDING SERVICES CONSULTANTS

P.O. Box 15, SHERWOOD Q. 4075

Phone: (07) 3278 4375

Website: www.edg.net.au Email: brisbane@edg.net.au

C3391a - WATERFRONT HOTEL, DIDDILLIBAH

C3391a-0006(A).xls

DISTRIBUTION BOARD DB-1

REVISION A - 22 NOVEMBER 2024

FAULT CURRENT: 6KA							REV
CHASSIS RATING: 250A							A
PHASES: 3							A
PROVIDE DB-1 AS PER THE DB-1 SCHEMATIC. PROVIDE THE DB WITH A FULL WIDTH EMPTY DIN RAIL TO ACCOMMODATE FUTURE CONTACTORS AND CONTROLS IN ADDITION TO THE CONTROLS INCLUDING THE DYNALITE EQUIPMENT PROVIDED AS PART OF THE INITIAL WORKS. PROVIDE THE DB WITH AN AS2293 EMERGENCY LIGHTING CONTROL SYSTEM TO CONTROL THE ASSOCIATED EMERGENCY LIGHTS. PROVIDE THE DB WITH SURGE PROTECTION. RECONNECT ALL OF THE EXISTING DB-T, DB-S, DB-A, DB-F AND DB-F1 CIRCUITS THAT REMAIN AND THE CIRCUITS WITHIN THE AREA NOMINATED AS DB-1 ON THE SWITCHBOARD ZONE PLAN TO THE NEW DB-1 WITH NEW SWITCHGEAR AND CONTROLS THAT HAS THE SAME CAPACITY AND FUNCTION AS THE ORIGINAL. UPDATE THE SCHEDULE AT PRACTICAL COMPLETION TO INCLUDE THE CIRCUIT USE AND LOCATION.							A
CIRC	PH	CIRCUIT BREAKER (amps)	CONTROL EQUIPMENT	CABLE SIZE (mm ²)	LOCATION	CIRCUIT USE	A
L1	1	20	RCBO	2.5	BOH	LIGHTS	A
L2	1	20	RCBO	2.5	EXTERNAL	SIGN	A
L3	1	20	RCBO	2.5	ROOF	LIGHTS	A
L4	1	20	RCBO	2.5	EXTERNAL	LIGHTS	A
L5	1	20	RCBO	2.5	ENTRY	LIGHTS	A
L6	1	20	RCBO	2.5	AMENITY	LIGHTS	A
L7	1	20	RCBO	2.5	BAR SERVERY	LIGHTS	A
L8	1	20	RCBO	2.5	SERVERY	HEAT LAMPS	A
L9	1	20	RCBO	2.5	DINING	LIGHTS	A
L10	1	20	RCBO	2.5		LIGHTS	A
L11	1	20	RCBO	2.5	DINING	LIGHTS	A
L12	1	20	RCBO	2.5	PWD / BAR	LIGHTS	A
L13	1	20	RCBO	2.5	AMENITY	LIGHTS	A
L14	1	20	RCBO	2.5	ENTRY	LIGHTS	A
L15	1	20	RCBO	2.5	OUTDOOR	LIGHTS	A
L16	1	20	RCBO	2.5	OUTDOOR	LIGHTS	A
L17	1	20	RCBO	2.5	OUTDOOR	LIGHTS	A
L18	1	20	RCBO	2.5	OUTDOOR	LIGHTS	A
L19	1	20	RCBO	2.5	EXTERNAL ENTRY	LIGHTS	A
L20	1	20	RCBO	2.5	DINING	LIGHTS	A
L21	1	20	RCBO	2.5	SERVERY	HEAT LAMPS	A
L22	1	20	RCBO	2.5	DINING	LIGHTS	A
L23	1	20	RCBO	2.5	DRINKING	LIGHTS	A
L24	1	20	RCBO	2.5	DINING	FAN	A
L25	1	20	RCBO	2.5	DRINKING	FAN	A
L26	1	20	RCBO	2.5	DINING DECK	FAN	A
L27	1	20	RCBO	2.5	DRINKING DECK	FAN	A
L28	1	20	RCBO	2.5	DINING DECK	HEATER	A
L29	1	20	RCBO	2.5	DINING DECK	HEATER	A
L30	1	20	RCBO	2.5	DINING DECK	HEATER	A
L31	1	20	RCBO	2.5	DINING DECK	HEATER	A
L32	1	20	RCBO	2.5	DINING DECK	HEATER	A
L33	1	20	RCBO	2.5	DINING DECK	HEATER	A
L34	1	20	RCBO	2.5	DINING DECK	HEATER	A
L35	1	20	RCBO	2.5	DRINKING DECK	HEATER	A
							A



ELECTRICAL DESIGN GROUP

ELECTRICAL BUILDING SERVICES CONSULTANTS

P.O. Box 15, SHERWOOD Q. 4075

Phone: (07) 3278 4375

Website: www.edg.net.au Email: brisbane@edg.net.au

C3391a - WATERFRONT HOTEL, DIDDILLIBAH

C3391a-0007(A).xls

DISTRIBUTION BOARD DB-G

REVISION A - 22 NOVEMBER 2024

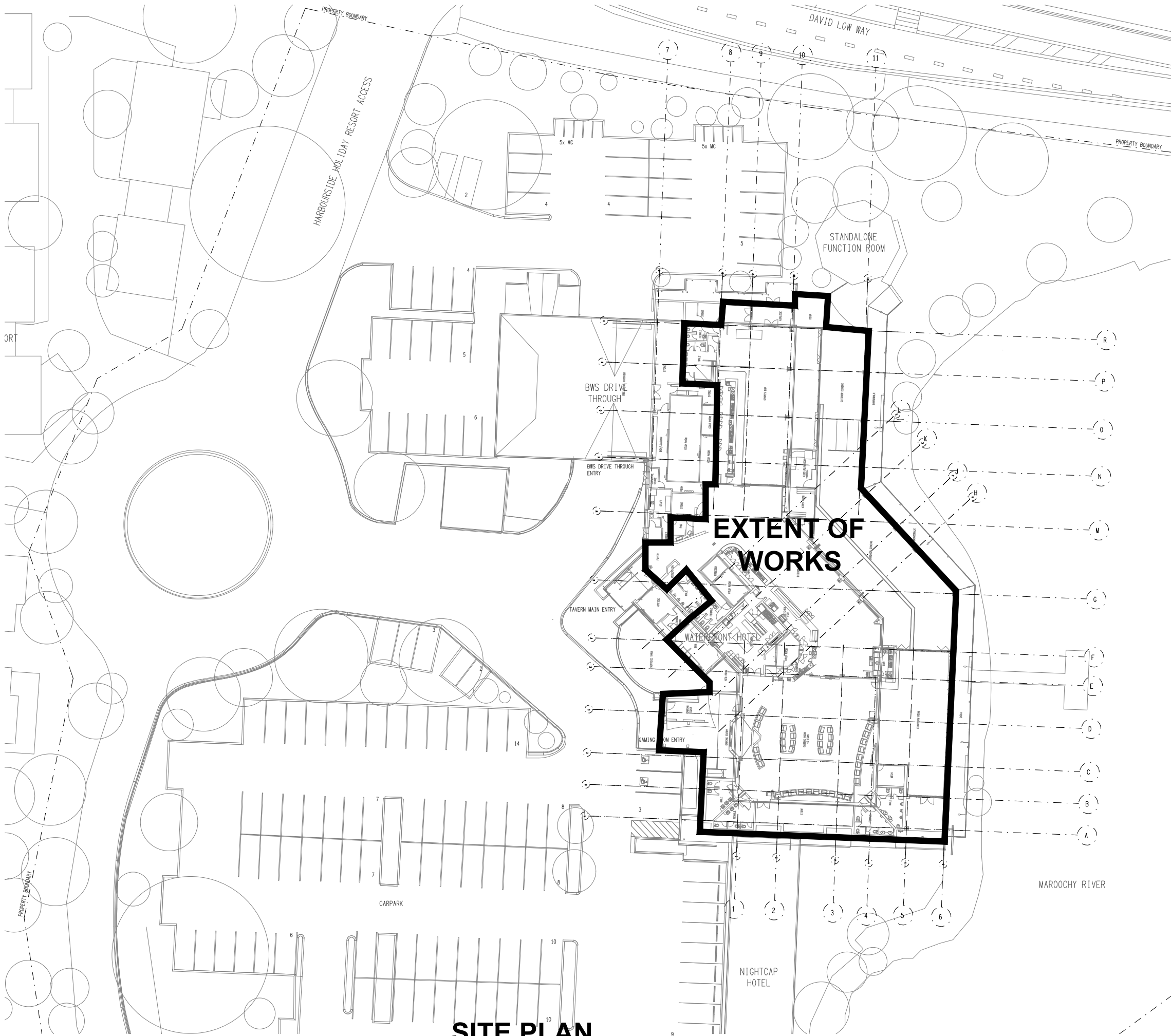
<div>FAULT CURRENT: 6KA</div> <div>CHASSIS SIZE: 36 POLE</div> <div>CHASSIS RATING: 250A</div> <div>PHASES: 3</div> <div>MAIN SWITCH: 250A NON AUTO LOAD BREAK</div> <div>SUPPLIED FROM: MSB</div> <div>SUBMAIN SIZE: 4C16</div>							REV
							A
							A
							A
							A
PROVIDE THE DB WITH A FULL WIDTH EMPTY DIN RAIL TO ACCOMMODATE FUTURE CONTACTORS AND CONTROLS IN ADDITION TO THE CONTROLS INCLUDING THE DYNALITE EQUIPMENT PROVIDED AS PART OF THE INITIAL WORKS. PROVIDE THE DB WITH AN AS2293 EMERGENCY LIGHTING CONTROL SYSTEM TO CONTROL THE ASSOCIATED EMERGENCY LIGHTS. PROVIDE THE DB WITH SURGE PROTECTION. RECONNECT ALL OF THE EXISTING DB-G CIRCUITS THAT REMAIN AND THE CIRCUITS WITHIN THE AREA NOMINATED AS DB-G ON THE SWITCHBOARD ZONE PLAN TO THE NEW DB-G WITH NEW SWITCHGEAR AND CONTROLS THAT HAS THE SAME CAPACITY AND FUNCTION AS THE ORIGINAL. UPDATE THE SCHEDULE AT PRACTICAL COMPLETION TO INCLUDE THE CIRCUIT USE AND LOCATION.							A
CIRC	PH	CIRCUIT BREAKER (amps)	CONTROL EQUIPMENT	CABLE SIZE (mm ²)	LOCATION	CIRCUIT USE	A
P1	1	20	RCBO	2.5	BAR	REF	A
P2	1	20	RCBO	2.5	BAR	GPOs	A
							A
							A
							A
							A
							A
							A
L1	1	20	RCBO	2.5	AMENITY	LIGHTS	A
L2	1	20	RCBO	2.5	EXTERNAL	LIGHTS	A
L3	1	20	RCBO	2.5	FUNCTION ROOM	LIGHTS	A
L4	1	20	RCBO	2.5	FUNCTION ROOM	LIGHTS	A
L5	1	20	RCBO	2.5	FUNCTION ROOM	LIGHTS	A
							A
							A
							A
							A
							A

LEGEND

- ELECTRICAL SERVICES SWITCHBOARD.
- SWITCHBOARD / CONTROL PANEL NOT PROVIDED AS PART OF THE ELECTRICAL SUBCONTRACT.
- SINGLE POWER OUTLET.
- DOUBLE POWER OUTLET.
- SPECIAL PURPOSE POWER OUTLET.
- EXISTING POWER OUTLET TO REMAIN AS NOTED.
- SIGNAGE CONNECTION.
- SINGLE PHASE ISOLATOR.
- THREE PHASE ISOLATOR.
- CONDUIT ROUTE.
- EXISTING HAND DRYER CONNECTION.
- FAN CONTROL, TYPE x
- LIGHTING CONTROL SWITCHPANEL, TYPE x.
- ONE-WAY LIGHT SWITCH.
- TWO-WAY LIGHT SWITCH.
- CIRCUIT LINE.
- SWITCH LINE.
- POWER CIRCUIT DESIGNATION.
DENOTES DB AND CIRCUIT.
- LIGHTING CONTROL CHANNEL REFERENCE.
- ELECTRICAL EQUIPMENT AS NOTED.
- REFER TO DETAIL NOTED FOR THE AREA SHOWN HATCHED.
ADDITIONAL OUTLETS & FITTINGS MAY BE SHOWN ON DETAIL.
- F01: LARGE CEILING FAN
- F02: MEDIUM CEILING FAN
- HL01: HEAT LAMP PENDANT.
- HL02: HEAT LAMP LINEAR..
- HR01: EXISTING HEATER TO BE RETAINED.
- Sx: LED STRIP LIGHT, TYPE AS NOTED.
- E1: GENERAL RECESSED LED EMERGENCY LIGHT, WHITE.
- E2: GENERAL SURFACE MOUNTED LED EMERGENCY LIGHT, WHITE.
- E3: GENERAL RECESSED LED EMERGENCY LIGHT, WHITE.
- EX: EMERGENCY LED EXIT LIGHT, WHITE UNLESS NOTED AS BLACK.
- RD01: RECESSED DOWNLIGHT, DIMMABLE.
- RD02: RECESSED DOWNLIGHT, DIMMABLE.
- RD03: SURFACE MOUNTED ADJUSTABLE FLOOD LIGHT, DIMMABLE.
- RD04: RECESSED DOWNLIGHT, DIMMABLE.
- RT01: 1200 x 300 LED FLAT PLATE PLASTERBOARD RECESSED, DIMMABLE.
- RT02: 600 x 300 LED FLAT PLATE PLASTERBOARD RECESSED.
- RT03: 1200 x 300 LED FLAT PLATE PLASTERBOARD RECESSED.

LEGEND

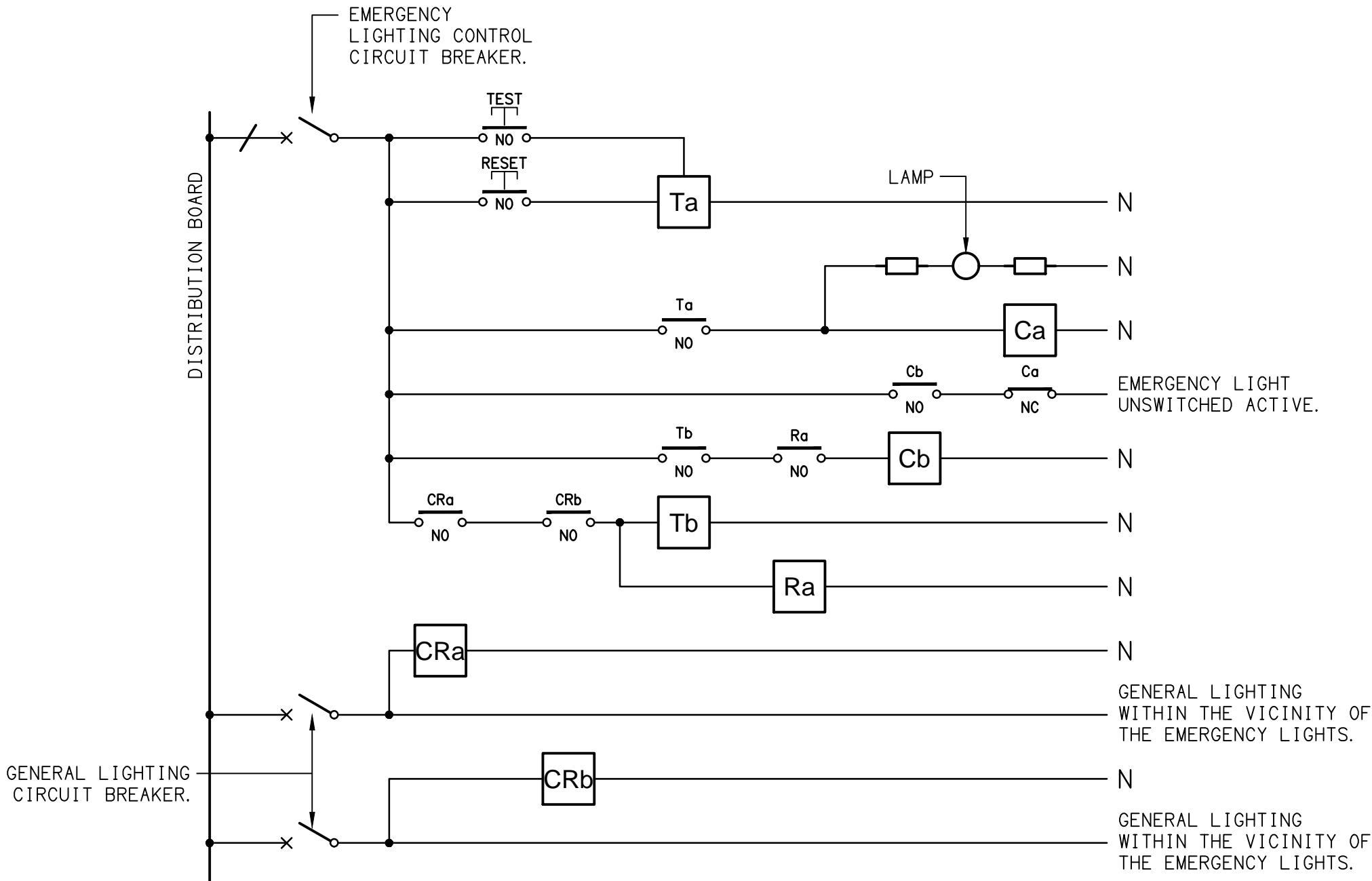
- PD01: DECORATIVE SUSPENDED PENDANT, DIMMABLE.
- PD02: DECORATIVE SUSPENDED PENDANT, DIMMABLE.
- PD03: DECORATIVE SUSPENDED PENDANT, DIMMABLE.
- WL01: WALL LIGHT, DIMMABLE.
- WL02: WALL LIGHT IP55, DIMMABLE.
- WL03: WALL LIGHT, DIMMABLE.
- WL04: WALL LIGHT C/W CHARGEABLE BATTERY.
- WL05: 2-LAMP WALL LIGHT, DIMMABLE.
- WL06: DECORATIVE WALL LIGHT.
- WL07: DECORATIVE WALL LIGHT.
- GL01: GARDEN SPIKE LIGHT, DIMMABLE.
- GL02: POT MONTED SPIKE LIGHT, DIMMABLE.
- SL01: ADJUSTABLE GROW LIGHT, SURFACE MOUNTED, WHITE.
- SL02: ADJUSTABLE FLOOD LIGHT, SURFACE MOUNTED.
- SL03: ADJUSTABLE GROW LIGHT, SURFACE MOUNTED, BLACK.



SITE PLAN
EXTENT OF WORKS
SCALE 1: 500

EQUIPMENT:

- TEST – TEST PUSH BUTTON MOUNTED ON THE DISTRIBUTION BOARD ESCUTCHEON.
- RESET – RESET PUSH BUTTON MOUNTED ON THE DISTRIBUTION BOARD ESCUTCHEON.
- LAMP – AMBER TEST INDICATING LAMP MOUNTED ON THE DISTRIBUTION BOARD ESCUTCHEON.
- Ta – ADJUSTABLE 0-3 HOUR TIMED RELAY.
- Tb – 15 MINUTE RUN-ON TIMER TO OPERATE UPON THE RETURN OF MAINS POWER.
- Cx – CONTACTOR x.
- CRx – CONTROL RELAY x.
- Rx – RELAY x.

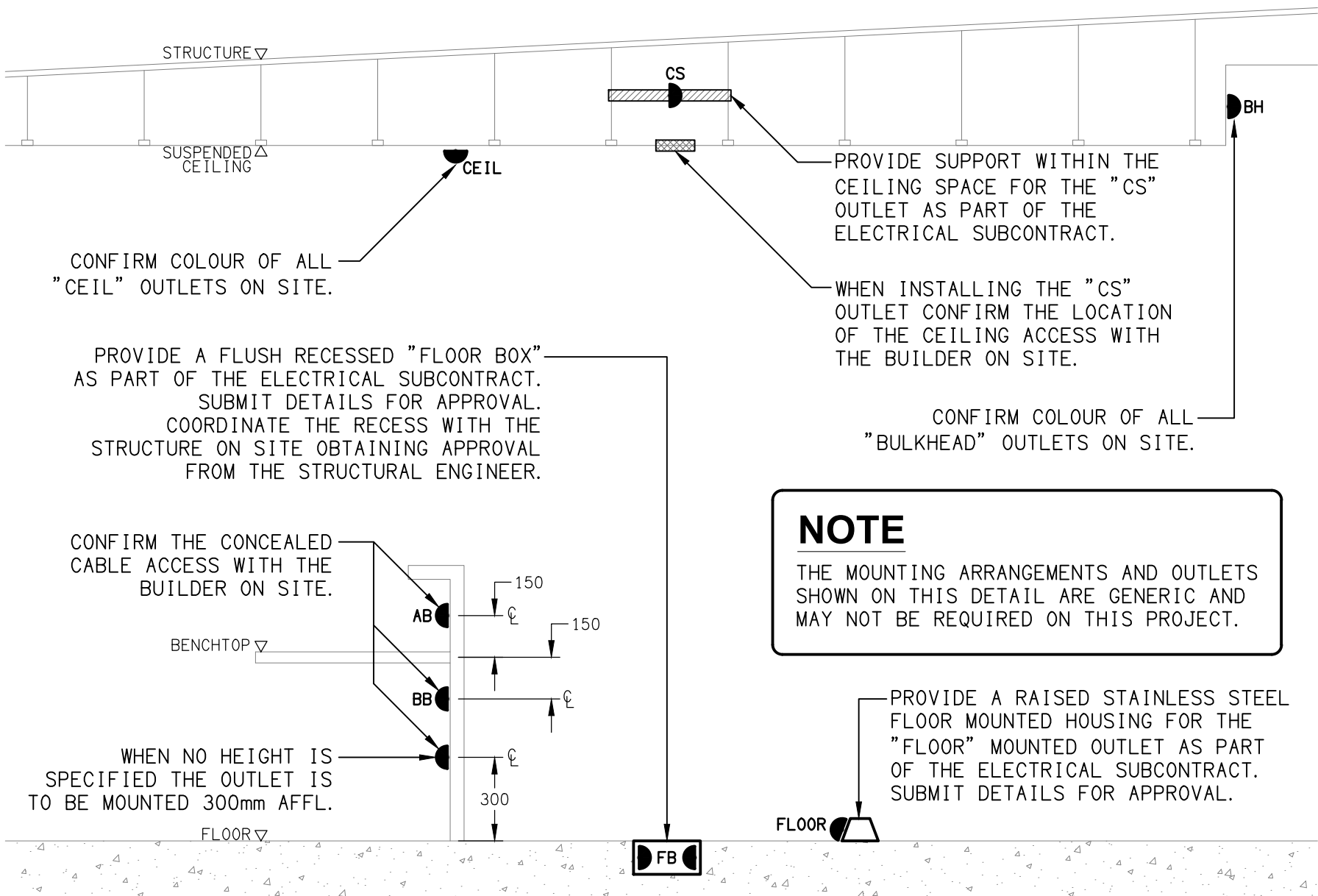


NOTES

1. THE EMERGENCY LIGHT UNSWITCHED ACTIVE / GENERAL LIGHTING SWITCHED ACTIVE CIRCUIT ARRANGEMENT AND CONTROL IS TYPICAL FOR ALL CIRCUITS SUPPLYING EMERGENCY LIGHTS.
2. PROVIDE ADDITIONAL CONTROL RELAYS (CRx) CONFIGURED AS PER CRa AND CRb FOR ALL ADDITIONAL LIGHTING CIRCUITS THAT SUPPLY LIGHTS IN THE VICINITY OF THE EMERGENCY LIGHTS.

SCHEMATIC

EMERGENCY LIGHTING
NOT TO SCALE



DETAIL

TYPICAL OUTLET MOUNTINGS
NOT TO SCALE

NOTES

1. EXTENT OF WORKS

THE ELECTRICAL SERVICES SUB-CONTRACT INCLUDES BUT IS NOT LIMITED TO THE FOLLOWING:
- SUPPLY AND INSTALLATION OF ALL COMPONENTS FORMING PART OF THE ELECTRICAL SERVICES.
- INSPECTIONS.
- TESTING AND COMMISSIONING.
- MAINTENANCE.
- CABLING, CABLE SUPPORT SYSTEMS AND ACCESS.
- POWER DISTRIBUTION.
- LIGHTING.
- MODIFICATION, RELOCATION AND EXTENSION AS NECESSARY OF ALL EXISTING SERVICES THAT ARE IMPACTED BY THE WORKS OR REQUIRED TO BE EXTENDED BY THE WORKS.
- REMOVAL OF ALL EXISTING SERVICES MADE REDUNDANT BY THE WORKS.
- AS CONSTRUCTED DOCUMENTS.
- ANY TEMPORARY WORKS REQUIRED TO KEEP THE HOTEL OPERATING DURING THE CONSTRUCTION PROCESS.
- ALL MINOR COMPONENTS AND INCIDENTAL WORKS NOT SPECIFICALLY REFERRED TO, HOWEVER NECESSARY TO COMPLETE THE ELECTRICAL SERVICES INSTALLATION SUCH THAT IT IS HANDED OVER COMPLETE, OPERATIONAL AND FIT FOR THE INTENDED USE.

UNDERTAKE THE WORKS IN STAGES REFLECTING THE MAIN CONTRACT.

PRIOR TO COMMENCING WORK CONSULT SITE MANAGEMENT FOR ANY HAZARDOUS MATERIAL AND OR ASBESTOS REGISTERS AS WELL AS UNDERTAKE A THOROUGH INSPECTION OF THE SITE TO IDENTIFY ANY POTENTIAL HAZARDOUS MATERIALS, ASBESTOS AND HEALTH OR SAFETY RISKS. ADVISE THE CONTRACTOR OF ANY POTENTIAL HAZARDOUS MATERIALS, ASBESTOS AND HEALTH OR SAFETY RISKS IF IDENTIFIED AND DO NOT COMMENCE WORK UNTIL AN APPROPRIATE MANAGEMENT PLAN HAS BEEN DEVELOPED AND AGREED TO BY ALL PARTIES.

SUPPLY ALL LABOUR, MATERIALS, EQUIPMENT, AND ALL OTHER ITEMS, WHETHER MENTIONED IN DETAIL OR NOT, REQUIRED FOR THE SATISFACTORY COMPLETION OF THE ELECTRICAL SERVICES INSTALLATION, LEAVING IN FULL WORKING ORDER TO THE SATISFACTION OF THE PROJECT MANAGER.

ACCEPT FULL RESPONSIBILITY FOR LIASING, ARRANGING AND CO-ORDINATION OF ALL WORKS THAT HAVE AN EFFECT ON OR WILL BE AFFECTED BY THE ELECTRICAL SERVICES.

REFER TO THE EQUIPMENT SCHEDULE FOR ADDITIONAL REQUIREMENTS.

2. WORKMANSHIP

ENSURE THAT THE ELECTRICAL WORK IS PERFORMED BY THE HOLDER OF A CURRENT ELECTRICAL SUB CONTRACTOR LICENSE AND THE SERVICES COVERED BY THE ACMA IS PERFORMED BY THE HOLDER OF THE APPROPRIATE CURRENT ACMA LICENSE. ENSURE THE INSTALLATION AND ALL COMPONENTS, FIXTURES, FITTINGS, OUTLETS AND CABLES ARE SUPPLIED AND INSTALLED TO A HIGH STANDARD THROUGHOUT, AND INSTALLED IN A NEAT AND TRADESMAN LIKE MANNER, TO THE CURRENT INDUSTRY STANDARDS. ENSURE ALL MATERIALS AND COMPONENTS OF A SIMILAR TYPE ARE OF THE SAME MANUFACTURER AND INSTALLED IN A UNIFORM MANNER.

IT IS THE ELECTRICAL SUB CONTRACTOR'S RESPONSIBILITY TO ENSURE THAT THE INSTALLATION IS FIT FOR PURPOSE AND IS PROVIDED AS A COMPLETE WORKING INSTALLATION. IT IS THE ELECTRICAL SUB CONTRACTOR'S RESPONSIBILITY TO PROVIDE ALL COMPONENTS, FITTINGS, FIXTURES, SYSTEMS, PROGRAMMING ETC IRRESPECTIVE OF THE LEVEL DETAILED IN THE DOCUMENTS SUCH THAT THE INSTALLATION IS PROVIDED AS A COMPLETE WORKING INSTALLATION.

CONCEAL ALL WIRING AND CONDUITS. EXPOSED CABLING OR CONDUITS ARE GENERALLY NOT ACCEPTABLE. IT IS NOTED THAT CHASING AND REINSTATEMENT WILL BE REQUIRED. ENSURE ALL COMPONENTS, EQUIPMENT AND MATERIALS SUPPLIED ARE NEW, UNUSED, DESIGNED AND SELECTED TO ENSURE SATISFACTORY OPERATION UNDER VARYING ATMOSPHERIC, CLIMATIC, HUMID TROPICAL CONDITIONS WITHOUT DISTORTION AND DETERIORATION IN ANY PART AFFECTING EFFICIENCY AND RELIABILITY OF THE SYSTEMS. DESIGN AND SELECT ALL EQUIPMENT TO PROVIDE THE NECESSARY SAFETY TO HUMAN LIFE AND PROPERTY DURING OPERATION AND MAINTENANCE WITH PARTICULAR ATTENTION GIVEN TO ELECTRICAL SAFETY AND SEGREGATION PRECAUTIONS.

CHECK THE FINISHED PAINTWORK AROUND THE AREA OF EACH INSTALLATION AND TOUCH UP ALL DAMAGED PARTS AND FINISHES AFTER THE INSTALLATION OF THE ELECTRICAL SERVICES.

ALL WORKS ARE TO BE CARRIED OUT IN ACCORDANCE WITH THE BUILDER'S PROGRAM. ENSURE ALL FINAL LOCATIONS OF OUTLETS AND FITTINGS ARE CO-ORDINATED ONSITE WITH THE ARCHITECT AND ALL OTHER SERVICES, TO THE APPROVAL OF THE PROJECT MANAGER. ALLOW TO CO-ORDINATE THE FINAL LOCATION OF ALL EQUIPMENT, FITTINGS, & OUTLETS, SUCH THAT THEY ARE INSTALLED IN ACCORDANCE WITH THE AS3000 RESTRICTED ZONES, AND ARE NOT COVERED INAPPROPRIATELY.

ENSURE THAT ALL METAL SURFACES ARE SUITABLY PROTECTED AGAINST CORROSION, AND THAT ALL PLASTIC MATERIALS ARE UV STABILISED.

PROVIDE ALL MATERIALS AS NEW, AND OF THE HIGHEST CLASS AVAILABLE FOR THEIR RESPECTIVE TYPES. ENSURE ALL ASPECTS OF THE WORK ARE OF A HIGH STANDARD THROUGHOUT, AND INSTALLED IN A NEAT AND TRADESMAN LIKE MANNER, TO THE CURRENT INDUSTRY STANDARDS.

3. STANDARDS

IRRESPECTIVE OF INFORMATION CONTAINED IN THE ELECTRICAL SERVICES DOCUMENTS OR IN INSTRUCTIONS, IT IS THE ELECTRICAL SUB CONTRACTOR'S RESPONSIBILITY TO ENSURE ALL ELECTRICAL SERVICES WORKS ARE INSTALLED IN ACCORDANCE WITH THE REQUIREMENTS OF THE FOLLOWING. REFER ANY DISCREPANCIES BETWEEN THE REQUIREMENTS OF THE FOLLOWING AND/OR THE ELECTRICAL SERVICES DOCUMENTS AND INSTRUCTIONS TO THE ARCHITECT FOR CLARIFICATION PRIOR TO THE PLACING OF ORDERS, FABRICATION OR INSTALLATION OF THE ITEMS/METHODS IN DISCREPANCY.
- NCC BUILDING CODE OF AUSTRALIA.
- ELECTRICITY ACT.
- ELECTRICAL SAFETY ACT.
- AS/NZS3000.
- AS3008.
- WORKPLACE HEALTH AND SAFETY ACT.
- TELECOMMUNICATIONS ACT.
- ACMA REQUIREMENTS.

4. AUTHORITIES

ENSURE ALL OF THE ELECTRICAL SERVICES COMPLY WITH THE REQUIREMENTS OF ALL REGULATORY AUTHORITIES HAVING JURISDICTION OVER THE SITE INCLUDING BUT NOT LIMITED TO THE FOLLOWING:
- ACMA.
- LOCAL COUNCIL.
- LOCAL SUPPLY AUTHORITY.
- STATE GOVERNMENT DEPARTMENT OF ENVIRONMENT AND HERITAGE.
- QLD GOVERNMENT, DIVISION OF WORKPLACE, HEALTH AND SAFETY.
- QLD FIRE AND EMERGENCY SERVICES.

NOTES

5. CABLES

UNLESS OTHERWISE SPECIFIED, INSTALL AND TERMINATE CABLES IN ACCORDANCE WITH THE MANUFACTURERS' RECOMMENDATIONS. DETERMINE THE FINAL ROUTES TO SUIT THE BUILDING STRUCTURE AND SITE CONDITIONS. UNLESS NOTED OTHERWISE, PROVIDE ALL 240 VOLT POWER AND LIGHTING WIRING AS 2.5mm² TWIN & EARTH STRANDED COPPER CONDUCTORS, PVC INSULATED 0.6/1kV V75 GRADE TO AS3174, PROTECTED BY A 20 AMP CIRCUIT BREAKER. ALL CONDUIT AND FITTINGS TO BE RIGID UPVC TO AS2053, UNLESS NOTED OTHERWISE.

6. POWER DISTRIBUTION

THE POWER DISTRIBUTION COMPONENT OF THIS CONTRACT INCLUDES
- REPLACING THE EXISTING DISTRIBUTION BOARD DB-D. (GAMING)
- REPLACING THE EXISTING DISTRIBUTION BOARD DB-G. (FUNCTION ROOM)
- REMOVING THE EXISTING DISTRIBUTION BOARD DB-A. (MAIN SWITCHROOM)
- REMOVING THE EXISTING DISTRIBUTION BOARD DB-F. (MAIN SWITCHROOM)
- REMOVING THE EXISTING DISTRIBUTION BOARD DB-F1. (MAIN SWITCHROOM)
- REMOVING THE EXISTING DISTRIBUTION BOARD DB-S. (LAUNDRY)
- REMOVING THE EXISTING DISTRIBUTION BOARD DB-T. (DRINKING STORE ROOM)
- PROVIDING A NEW DISTRIBUTION BOARD DB-1.
- PROVIDING DB-G WITH A NEW SUPPLY FROM THE MAIN SWITCHBOARD.
- PROVIDING DB-1 WITH A SUPPLY FROM THE MAIN SWITCHBOARD.

ALL OF THE EXISTING SWITCHBOARDS, CIRCUITS, CABLING AND OUTLETS THAT BECOME REDUNDANT ARE TO BE REMOVED. THE EXISTING CIRCUITS THAT REMAIN THAT ARE NOT SUPPLIED FROM DB-B ARE TO BE RECONNECTED TO THE SWITCHBOARDS WITH NEW SWITCHGEAR AND CONTROLS AS PER THE SWITCHBOARD ZONE DRAWING. ANY INTERRUPTION TO THE POWER SUPPLY TO ANY SERVICES OUTSIDE OF THE AREA OF WORKS MUST BE RESTRICTED TO OUTSIDE OF THE PUBS OPERATING HOURS AND MUST BE ADVISED TO THE OPERATOR IN WRITING AT LEAST ONE WEEK PRIOR.

WITHIN TWO WEEKS OF THE MAIN CONTRACTOR BEING AWARDED THE CONTRACTOR UNDERTAKE AN AUDIT OF THE EXISTING INSTALLATION AND PROVIDE A REPORT CONTAINING THE FOLLOWING INFORMATION:
- SCHEMATIC OF THE MAIN SWITCHBOARD.
- SITE PLAN IDENTIFYING THE LOCATION OF EACH SWITCHBOARD WITH THE SAME DESIGNATION AS THE MAIN SWITCHBOARD SCHEMATIC.
- SIZE, TYPE AND CONFIGURATION OF THE CONSUMERS MAINS.
- SIZE, TYPE, FRAME SIZE AND OVERLOAD RATING OF EACH SUBMAIN CIRCUIT BREAKER IN THE MAIN SWITCHBOARD.
- SIZE, TYPE AND CONFIGURATION OF EACH SET OF SUBMAINS.
- NUMBER OF SPARE POLES IN THE BWS DISTRIBUTION BOARD.
- NUMBER OF SPARE POLES IN THE MOTEL DISTRIBUTION BOARD.

REPLACE THE FACEPLATE OF ANY EXISTING OUTLETS NOTED ON THE DRAWING AS EXISTING TO REMAIN IF THE FACEPLATE IS STAINED (CAN NOT BE CLEANEED) OR IS DAMAGED.

THE POWER DISTRIBUTION COMPONENT OF THIS CONTRACT INCLUDES, BUT IS NOT LIMITED TO THE FOLLOWING EXTENT OF WORK:
- POWER DISTRIBUTION.
- AUDIT.
- NEW SWITCHBOARD, SUBMAINS AND MSB CIRCUIT BREAKERS.
- CABLE ACCESS WAYS.
- CIRCUITS.
- ISOLATORS AND OUTLETS.
- TESTING AND COMMISSIONING.
- REMOVAL OF ALL EXISTING REDUNDANT SERVICES.
- RECONNECTION OF ALL EXISTING SERVICES THAT REMAIN.

REFER TO THE DISTRIBUTION BOARD SCHEDULES FOR ADDITIONAL REQUIREMENTS AND CIRCUIT DETAILS.

PROVIDE DISTRIBUTION BOARDS DB-1, DB-D AND DB-G AS FOLLOWS:
- WALL MOUNTED.
- EACH CUBICAL IS TO HAVE A MINIMUM WIDTH OF 700MM.
- IP44 FORM 1.
- LIGHT GREY ENCLOSURE WHITE ESCUTCHEON.
- 3 POINT LOCKABLE HANDLES ON ALL DOORS.
- LIFT OFF HINGES ON ALL DOORS AND ESCUTCHEONS.
- 1/4 TURN LATCHES AND D HANDLES ON ALL ESCUTCHEONS.
- ALL SWITCHGEAR TO BE SCHNEIDER OR NHP/ TERASAKI.
- PROVIDE SHOP DRAWINGS FOR APPROVAL.
- 25% SPARE POLES AT PRACTICAL COMPLETION.
- ALL COMPONENTS ARE TO BE LABELLED WITH NON-STICK LABELS.

ENSURE ALL THREE PHASE CIRCUITS ARE PROVIDED WITH CORRECT PHASE ROTATION.

ENSURE ALL OUTLETS AND ISOLATORS ARE POSITIONED SUCH THAT THEY ARE NOT COVERED BY THE EQUIPMENT. THE FINAL POSITION OF ALL OUTLETS AND ISOLATORS ARE TO BE CONFIRMED ON SITE BY THE TENANTS REPRESENTATIVE.

7. LIGHTING

ALL OF THE LIGHT FITTINGS, LAMPS AND ACCESSORIES ARE TO BE PROVIDED AS PART OF THIS CONTRACT. THE LIGHTING COMPONENT OF THIS CONTRACT INCLUDES, BUT IS NOT LIMITED TO THE FOLLOWING EXTENT OF WORK:
- LIGHTING.
- CEILING FANS.
- HEATERS.
- LIGHT FITTINGS AND ACCESSORIES.
- EMERGENCY AND EXIT LIGHTING.
- EARTHING OF THE LIGHTING INSTALLATION.
- LIGHTING CONTROL.
- PHILIPS DYNALITE LIGHTING CONTROL SYSTEM.
- LIGHTING SUBCIRCUITS.
- TESTING AND COMMISSIONING.
- RECONNECTION OF THE EXISTING LIGHTING THAT REMAINS.
- REMOVAL OF ALL EXISTING REDUNDANT LIGHTING SERVICES INCLUDING THE REDUNDANT LIGHTING CONTROL SYSTEM.

COMMISSION THE LIGHTING CONTROL AT PRACTICAL COMPLETION AND AGAIN THREE TIMES DURING THE DEFECTS AND LIABILITY PERIOD TO THE SATISFACTION OF THE OPERATOR.

DALI TO PHASE DIMMING CONVERTERS ARE NOT ACCEPTABLE.

NOTES

8. EMERGENCY AND EXIT LIGHTING

PROVIDE A SINGLE POINT EMERGENCY LIGHTING SYSTEM THAT COMPLIES WITH THE LATEST ISSUE OF ALL PARTS AS2293 AND THE RELEVANT PARTS OF THE NCC BCA. INSTALL EMERGENCY LIGHT FITTINGS NOMINATED AS MAINTAINED WITH THE LAMP PERMANENTLY ON SUPPLIED VIA AN UNSWITCHED ACTIVE MAINS SUPPLY WHEN THE MAINS SUPPLY IS AVAILABLE. WHEN THE MAINS SUPPLY IS NOT AVAILABLE, THE LAMP IS TO REMAIN ON SUPPLIED BY THE EMERGENCY PACK. SINGLE LAMP MAINTAINED EMERGENCY LIGHTS ARE NOT SWITCHED WITH THE LOCAL GENERAL AREA LIGHTING. (THE LAMP IS ALWAYS ON.)

INSTALL EMERGENCY LIGHT FITTINGS NOMINATED AS NON-MAINTAINED AS FOLLOWS:
- IF THE FITTING IS NOT BEING SWITCHED, THE LAMP IS TO REMAIN OFF WHEN THE MAINS SUPPLY IS AVAILABLE. WHEN THE MAINS SUPPLY IS NOT AVAILABLE THE LAMP IS TO BE SWITCHED ON SUPPLIED BY THE EMERGENCY PACK. UNSWITCHED SINGLE LAMP NON-MAINTAINED EMERGENCY LIGHTS ARE NOT SWITCHED WITH THE LOCAL GENERAL AREA LIGHTING. (THE LAMP IS ON ONLY WHEN THE MAINS SUPPLY IS NOT AVAILABLE.)
- IF THE FITTING IS BEING SWITCHED, THE LAMP IS TO BE SUPPLIED AND CONTROLLED WITH THE LOCAL GENERAL AREA LIGHTING WHEN THE MAINS SUPPLY IS AVAILABLE. WHEN THE MAINS SUPPLY IS NOT AVAILABLE THE LAMP IS TO BE SWITCHED ON, SUPPLIED BY THE EMERGENCY PACK. (THE LAMP IS ON WHEN TURNED ON WITH THE LOCAL GENERAL LIGHTING OR THE MAIN SUPPLY IS NOT AVAILABLE.)

INSTALL EMERGENCY LIGHTS SUCH THAT THE STATUS INDICATOR L.E.D. IS CLEARLY VISIBLE AND THE TEST BUTTONS ARE READILY ACCESSIBLE. LABEL EACH CIRCUIT BREAKER WHICH CONTROLS THE UNSWITCHED ACTIVE TO EXIT LIGHTS WITH A LABEL FIXED ADJACENT; ENGRAVED PLASTIC LAMINATE, GREEN BACKGROUND WITH WHITE CHARACTERS: -

WARNING
INTERRUPTING SUPPLY WILL DISCHARGE
EMERGENCY LIGHTING BATTERIES

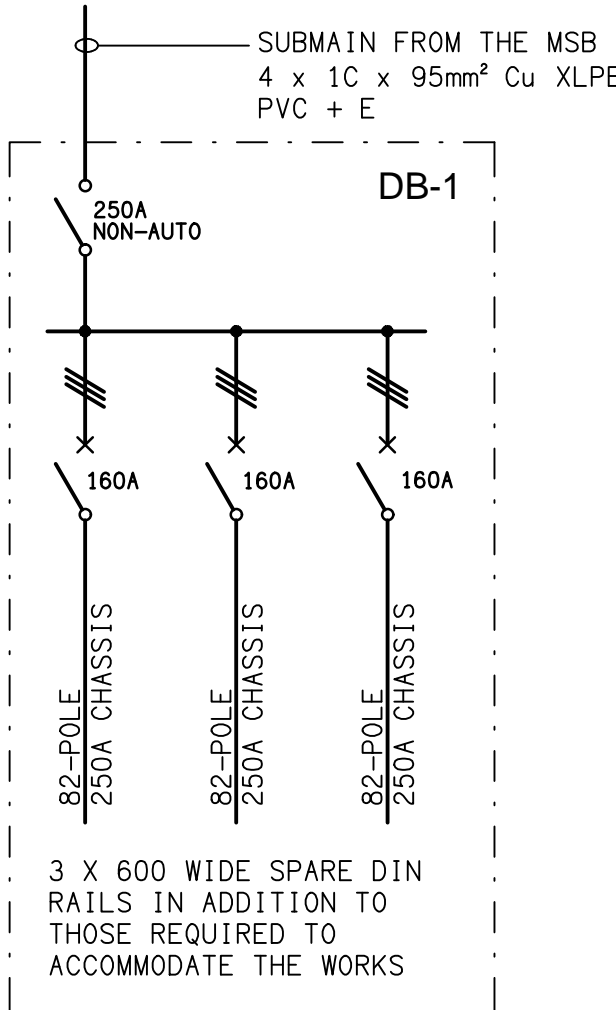
PROVIDE WRITTEN EVIDENCE OF THE INITIAL COMMISSIONING AND TESTING AND TESTING FOR THE DURATION OF THE MAINTENANCE PERIOD IN ACCORDANCE WITH AS 2293.2.

THIS EVIDENCE IS TO BE IN THE FORM OF A LOG BOOK SIMILAR TO THE GENERAL LIGHTING SERVICE PTY LTD "EMERGENCY LIGHTING MAINTENANCE LOG BOOK AND MANUAL" WHICH IS TO BE PROVIDED BY THE ELECTRICAL SUB-CONTRACTOR AND HAVE ALL ENTRIES FULLY COMPLETED AND BE PRESENTED FOR INSPECTION AT PRACTICAL COMPLETION. THE LOG BOOK IS TO BE RETAINED BY THE ELECTRICAL SUB-CONTRACTOR FOR THE DURATION OF THE MAINTENANCE PERIOD, AND THE SIX MONTHLY TEST AND MAINTENANCE RESULTS ENTERED. THE LOG BOOK IS TO BE PRESENTED FOR APPROVAL AT FINAL COMPLETION (EXPIRY OF THE MAINTENANCE PERIOD) AND WILL BE FORWARDED TO THE OPERATOR FOR THEIR USE.

PROVIDE MAINTENANCE OF THE EMERGENCY AND EXIT LIGHTING INSTALLATION INCLUDING RECORDS IN ACCORDANCE WITH THE LATEST ISSUE OF ALL PARTS AS2293 AND THE RELEVANT PARTS OF THE NCC BCA. PROVIDE THE EMERGENCY LIGHTING SYSTEM WITH A SUPPLY SENSING AND TESTING FACILITY IN ACCORDANCE WITH AS 2293.1.

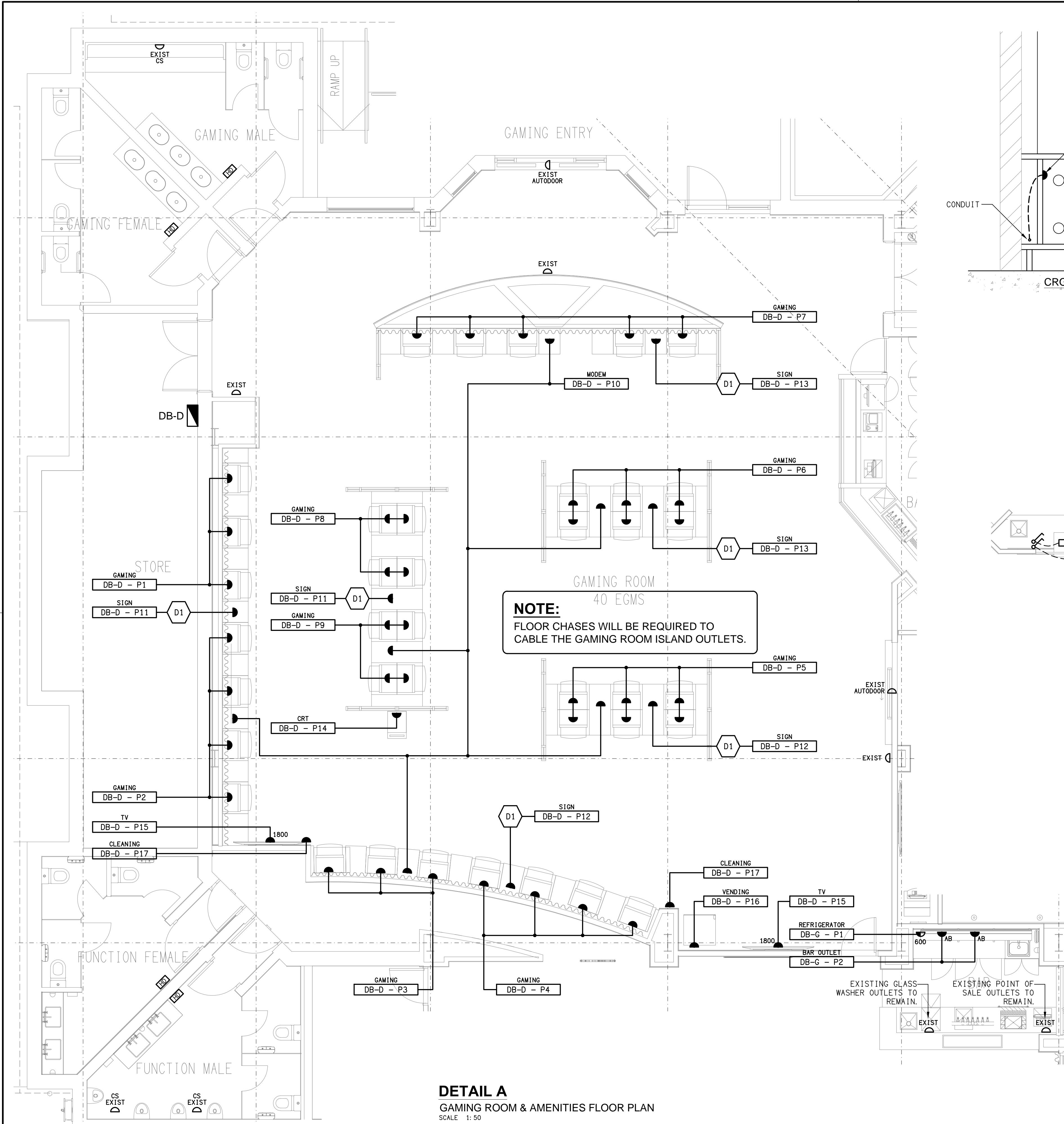
9. ABBREVIATIONS

A - AMP CURRENT RATING
AB - MOUNT ABOVE BENCH.
AFFL - ABOVE FINISHED FLOOR LEVEL.
BB - MOUNT BELOW BENCH.
BH - MOUNT ON BULKHEAD.
CEIL - MOUNT ON CEILING.
CS - MOUNT WITHIN CEILING SPACE.
C/W - COMPLETE WITH.
DW - DISHWASHER.
HP - HOT PLATE.
HWS - HOT WATER SYSTEM.
MCB - MINIATURE CIRCUIT BREAKER.
MSB - MAIN SWITCHBOARD.
MSSB - MECHANICAL SERVICES SWITCHBOARD.
MW - MICROWAVE.
N - NEON / LED INDICATOR WHEN ON.
NTS - NOT TO SCALE.
OV - OVEN.
QDC - QUEENSLAND DEVELOPMENT CODE.
RCBO - CIRCUIT BREAKER C/W AN INTEGRAL 30mA RESIDUAL CURRENT DEVICE.
RCD - CIRCUIT PROTECTED VIA A 30mA RESIDUAL CURRENT DEVICE.
REF - REFRIGERATOR.
UNO - UNLESS NOTED OTHERWISE.
WP - WEATHERPROOF TO IP56 UNO.
500 - NUMBER DENOTES MOUNTING HEIGHT AFFL.

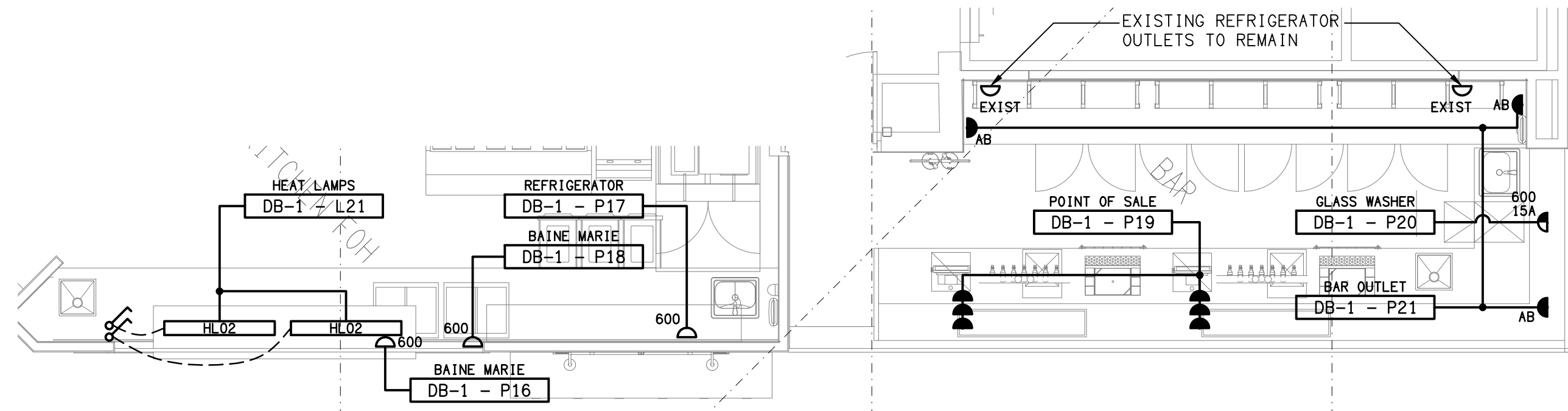
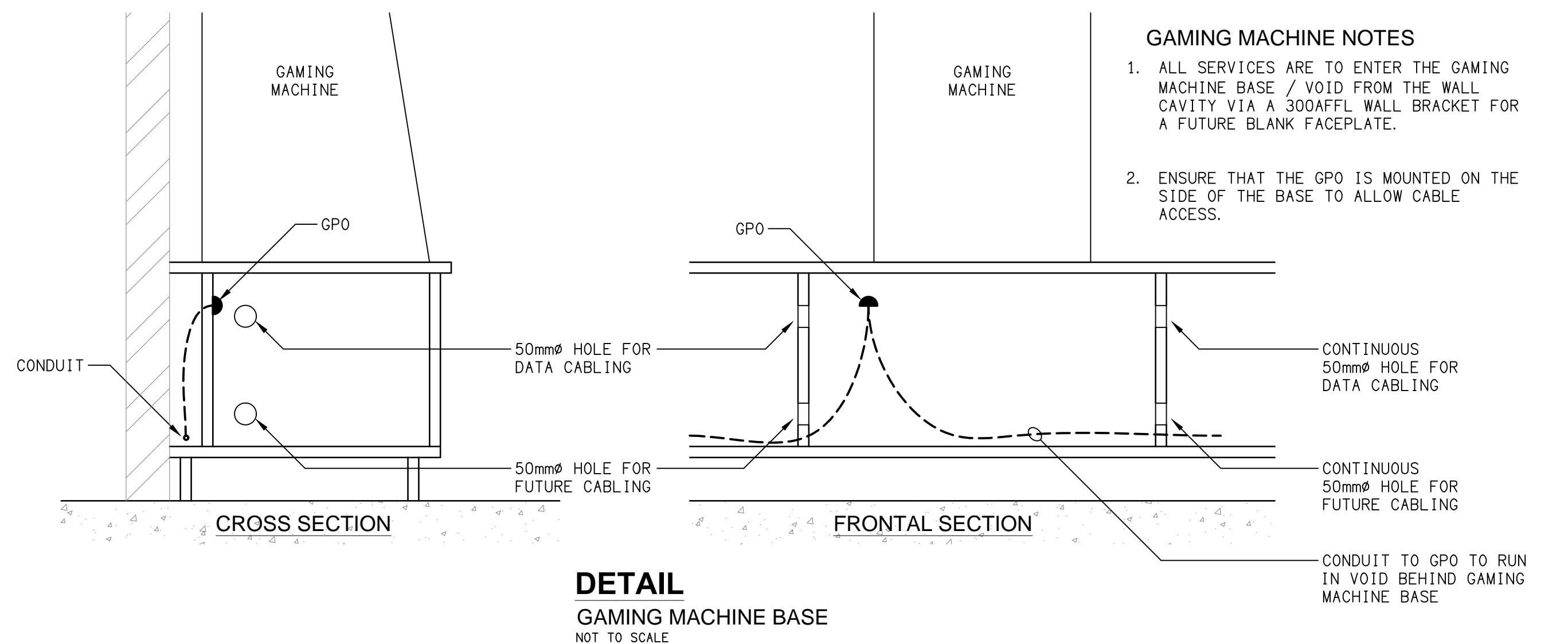


DB-1 SCHEMATIC CONFIGURATION
NOT TO SCALE

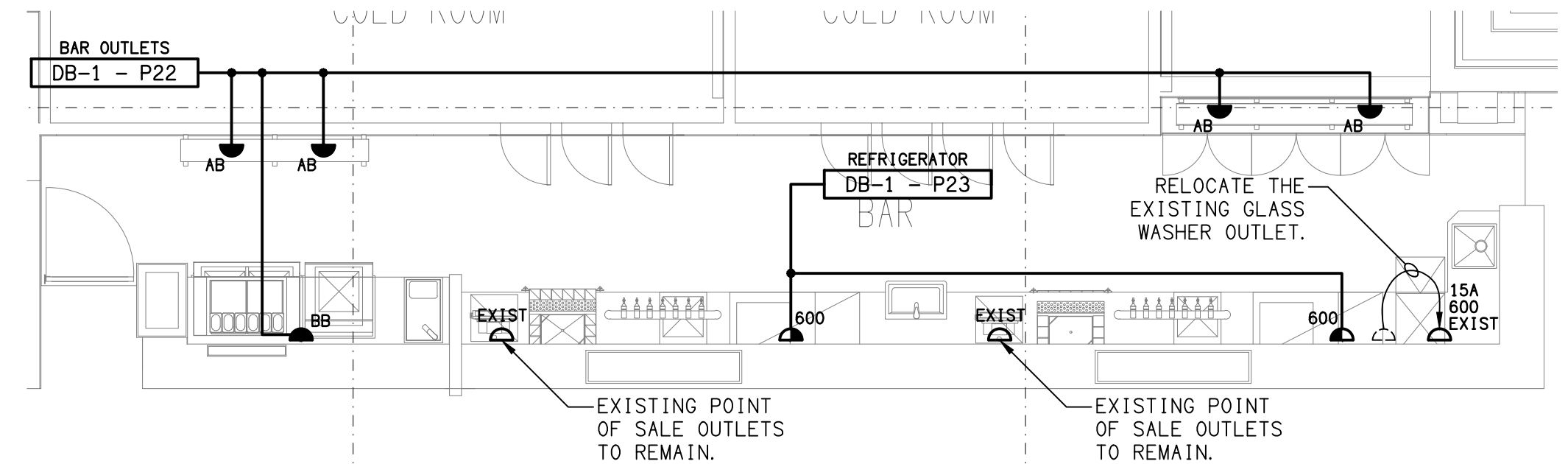
ELECTRICAL DESIGN GROUP BRISBANE PTY LTD ACN 092 710 793		THE COPYRIGHT OF THIS DRAWING REMAINS THE PROPERTY OF THE ELECTRICAL DESIGN GROUP.		PROJECT: WATERFRONT HOTEL, DIDDILLIBAH		C	CONSTRUCTION	25/02/2025
TRADING AS: ELECTRICAL DESIGN GROUP		USE FIGURED DIMENSIONS IN PREFERENCE TO SCALE.		DRAWING: ELECTRICAL SERVICES NOTES & DB-1 SCHEMATIC		REV: DESCRIPTION: DATE:		
ALL DIMENSIONS TO BE VERIFIED ONSITE.		P.O.Box 15, Sherwood Q.4075 Phone: (07) 3278 4375 Email: brisbane@edg.net.au Web: www.edg.net.au		2 / 46 DAVID LOW WAY, DIDDILLIBAH, SUNSHINE COAST		SCALE: NOT TO SCALE AT A1		PROJECT NO: C3391a
						DRAWING NO: E02		REVISION: C



DETAIL A
GAMING ROOM & AMENITIES FLOOR PLAN
SCALE 1:50



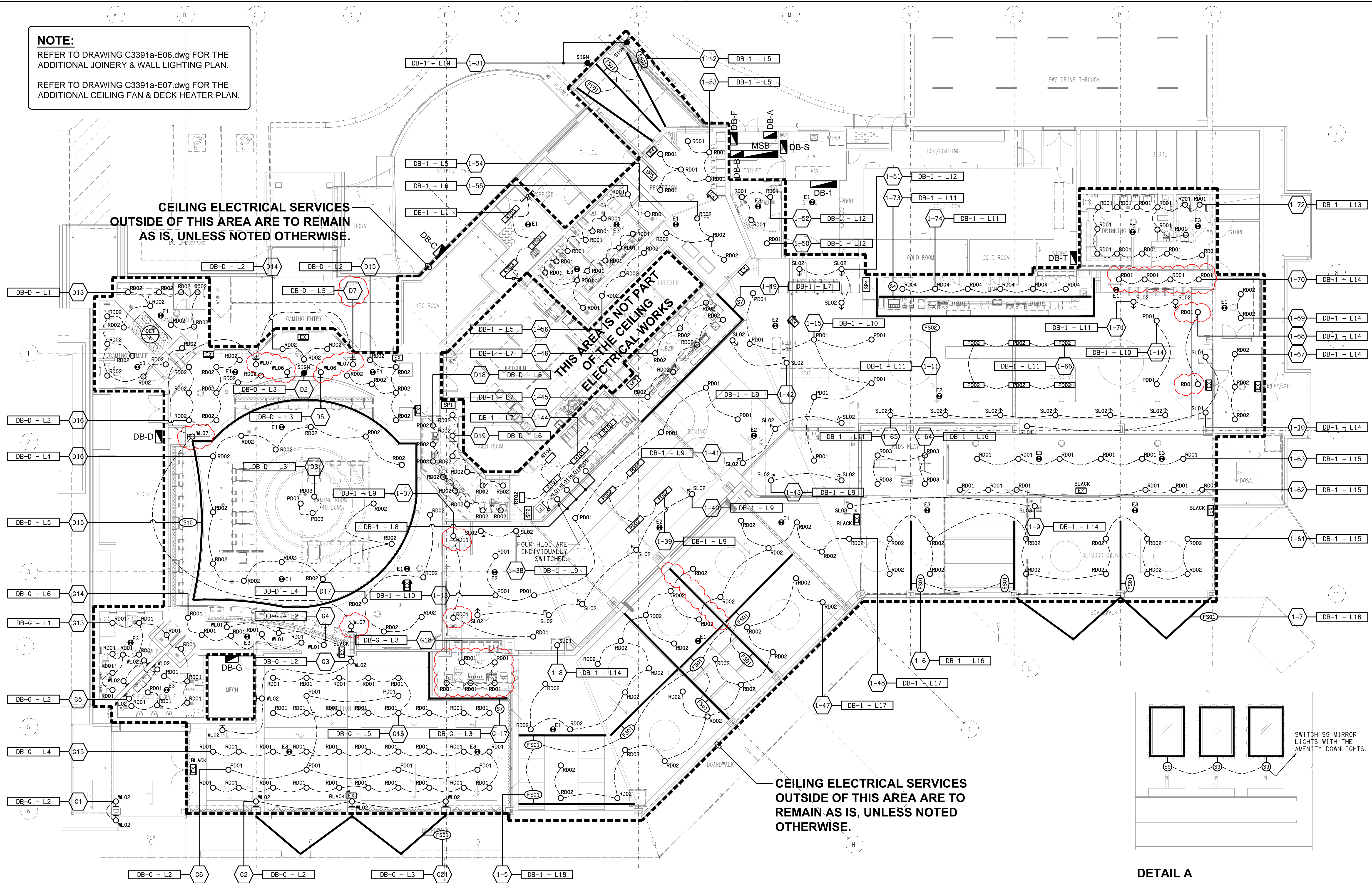
DETAIL B
DINING BAR FLOOR PLAN
SCALE 1:50



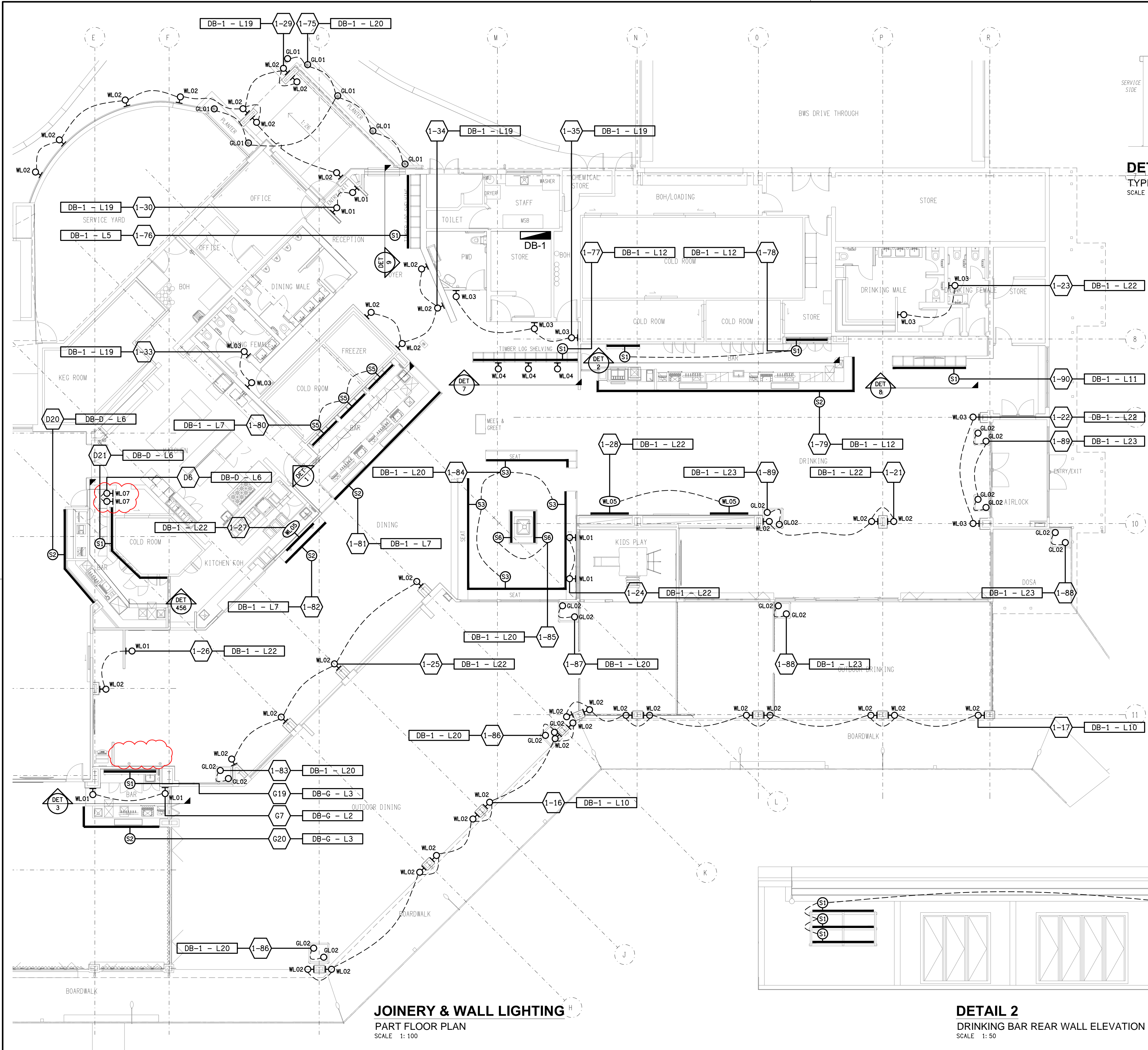
DETAIL C
DRINKING BAR FLOOR PLAN
SCALE 1:50

NOTE:
REFER TO DRAWING C3391a-E06.dwg FOR THE
ADDITIONAL JOINERY & WALL LIGHTING PLAN.

REFER TO DRAWING C3391a-E07.dwg FOR THE
ADDITIONAL CEILING FAN & DECK HEATER PLAN.



DETAIL A
TYPICAL GAMING VANITY BENCH ELEVATION
SCALE 1: 25



JOINERY & WALL LIGHTING
PART FLOOR PLAN
SCALE 1: 100

DETAIL 0
TYPICAL S2 MOUNTING SECTION
SCALE 1: 20

DETAIL 1
DINING BAR REAR WALL ELEVATION
SCALE 1: 50

DETAIL 10
TYPICAL WL05 FITTING ELEVATION
SCALE 1: 50

DETAIL 3
FUNCTION BAR REAR WALL ELEVATION
SCALE 1: 50

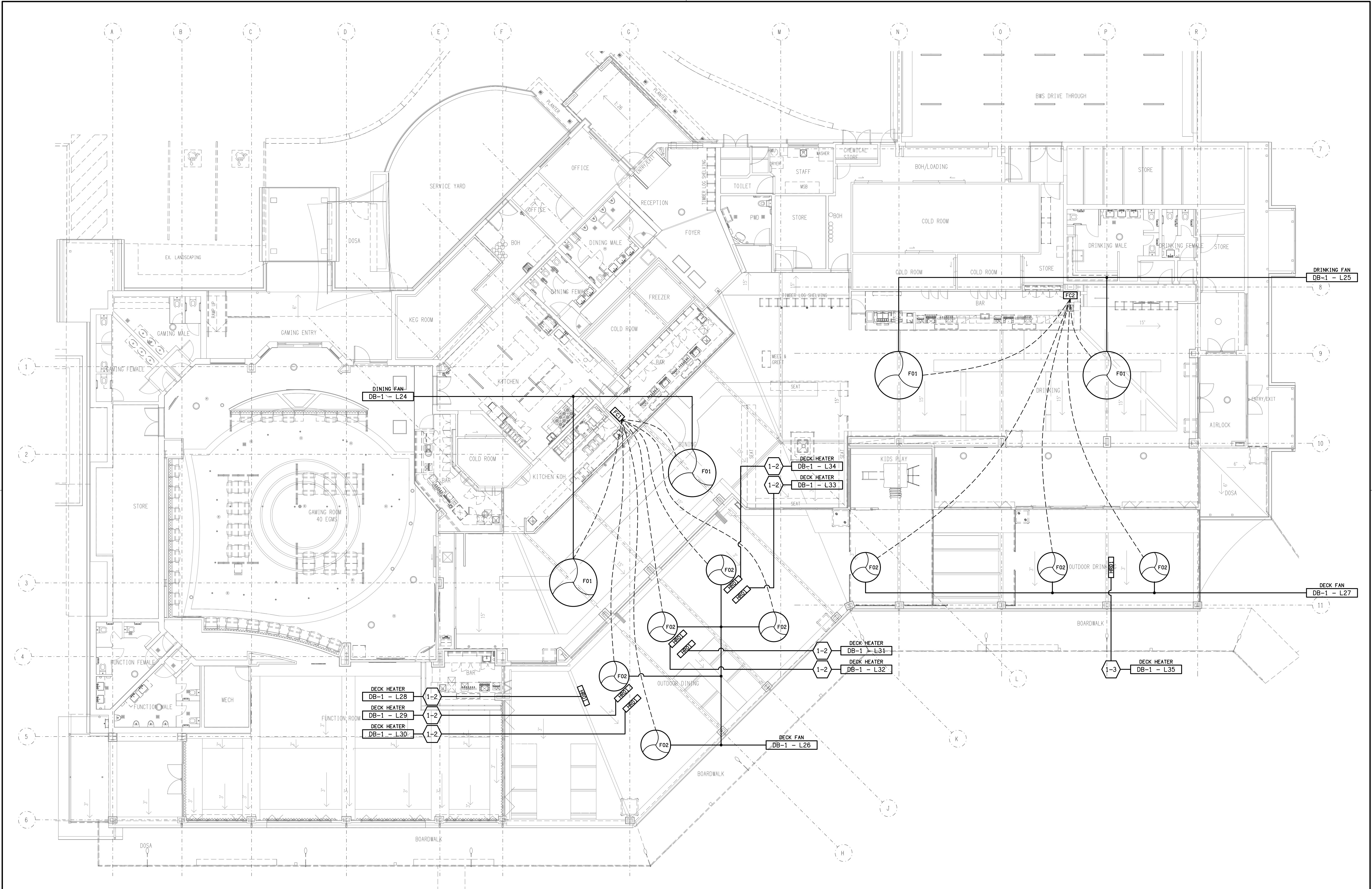
DETAIL 4 / 5 / 6
GAMING BAR REAR WALL ELEVATION
SCALE 1: 50

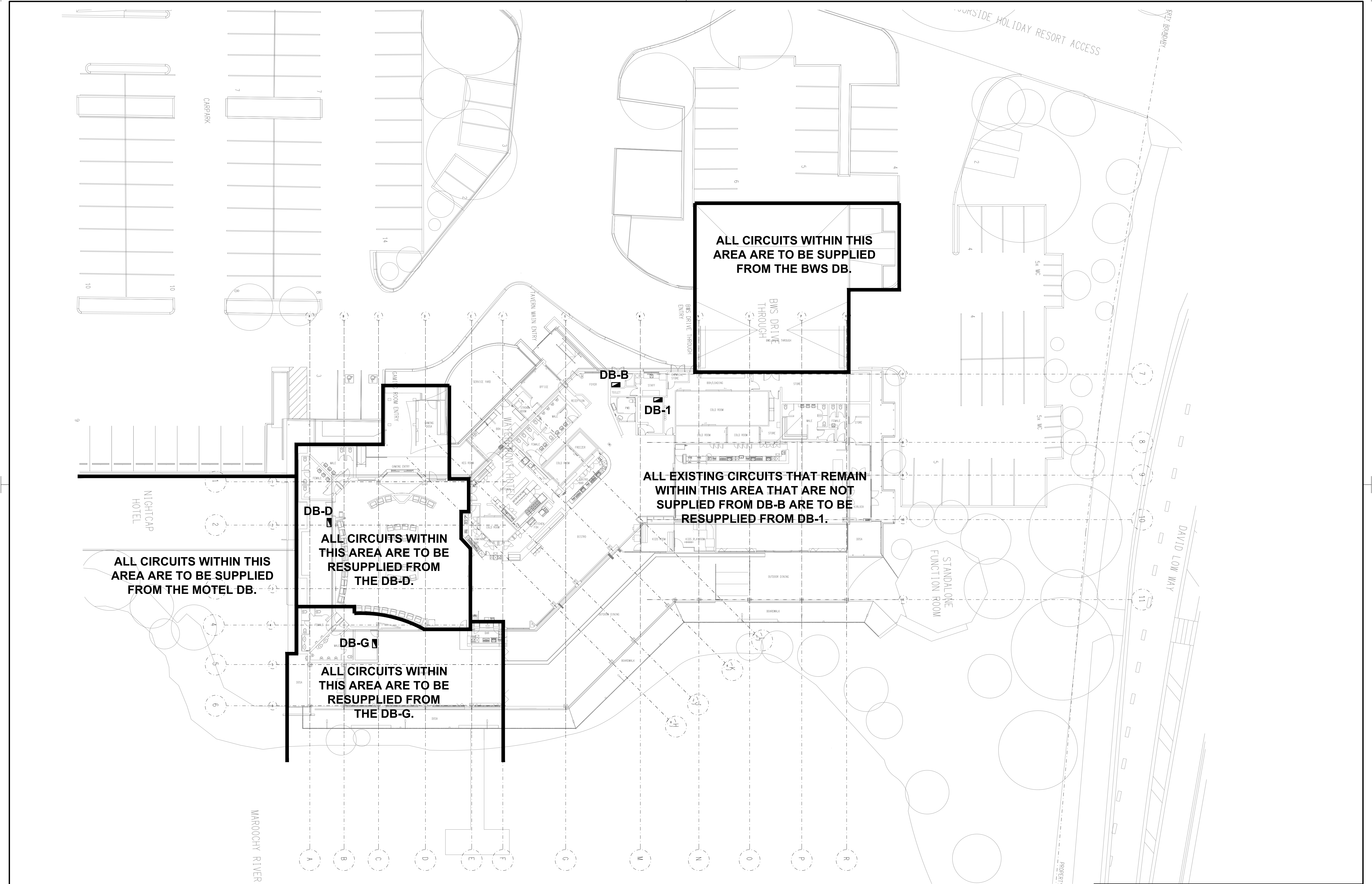
DETAIL 7
DRINKING SHEVING ELEVATION
SCALE 1: 50

DETAIL 8
DRINKING ENTRY ELEVATION
SCALE 1: 50

DETAIL 2
DRINKING BAR REAR WALL ELEVATION
SCALE 1: 50

DETAIL 9
MAIN ENTRY SHELVING ELEVATION
SCALE 1: 50





ALL CIRCUITS WITHIN THIS AREA ARE TO BE SUPPLIED FROM THE BWS DB.

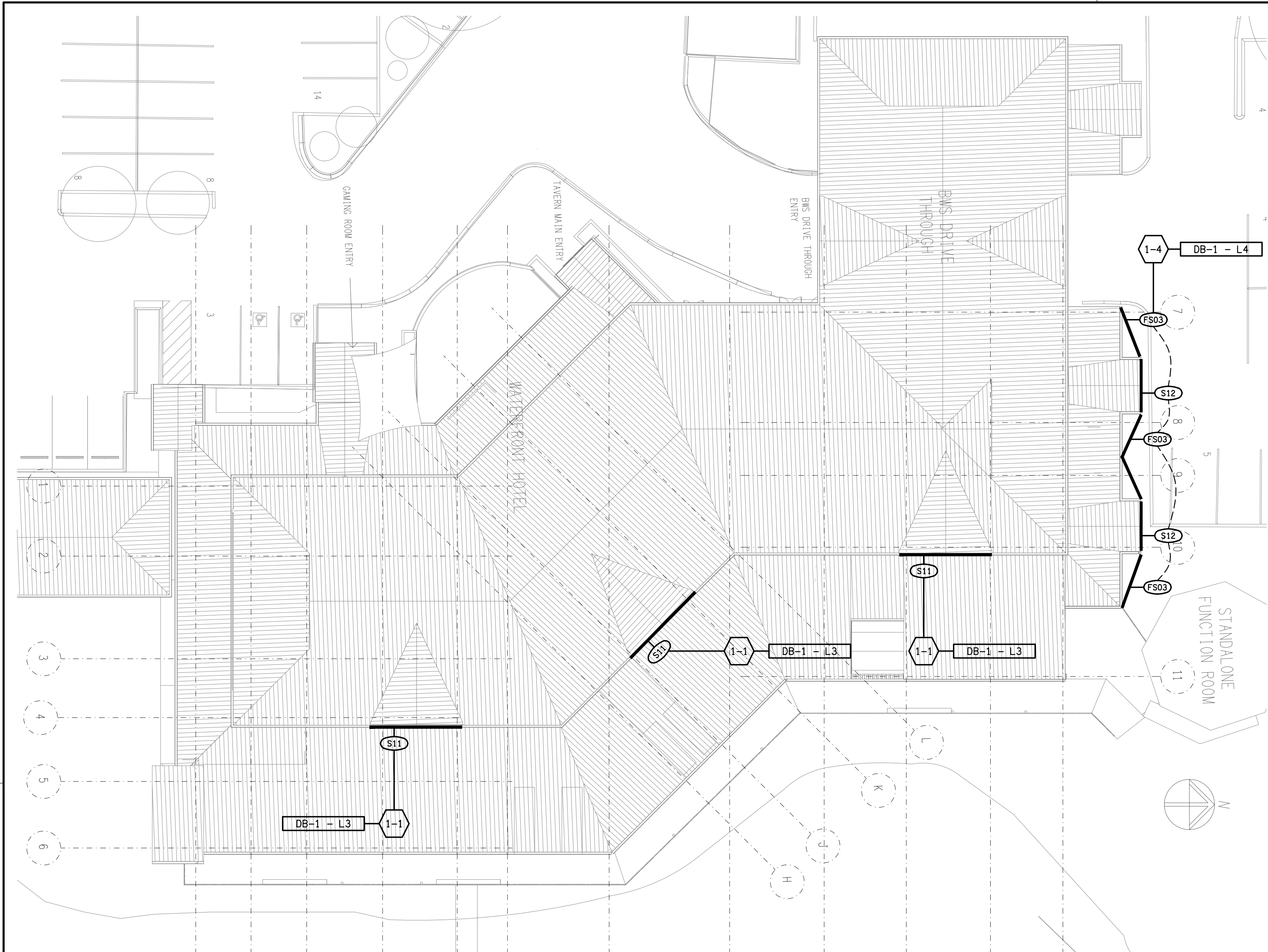
DB-B
DB-1

ALL EXISTING CIRCUITS THAT REMAIN WITHIN THIS AREA THAT ARE NOT SUPPLIED FROM DB-B ARE TO BE RESUPPLIED FROM DB-1.

DB-D
ALL CIRCUITS WITHIN THIS AREA ARE TO BE RESUPPLIED FROM THE DB-D.

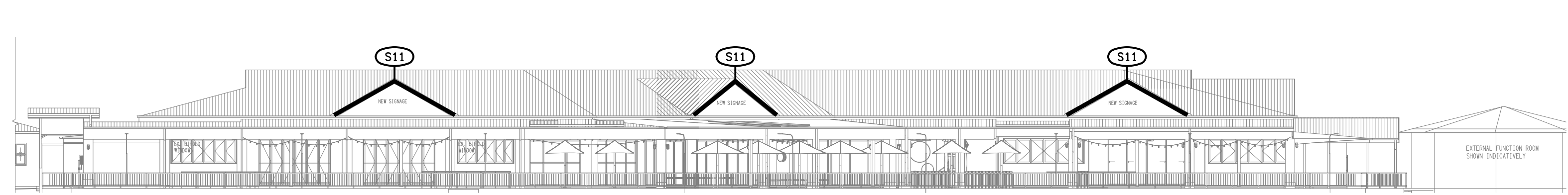
ALL CIRCUITS WITHIN THIS AREA ARE TO BE SUPPLIED FROM THE MOTEL DB.

DB-G
ALL CIRCUITS WITHIN THIS AREA ARE TO BE RESUPPLIED FROM THE DB-G.

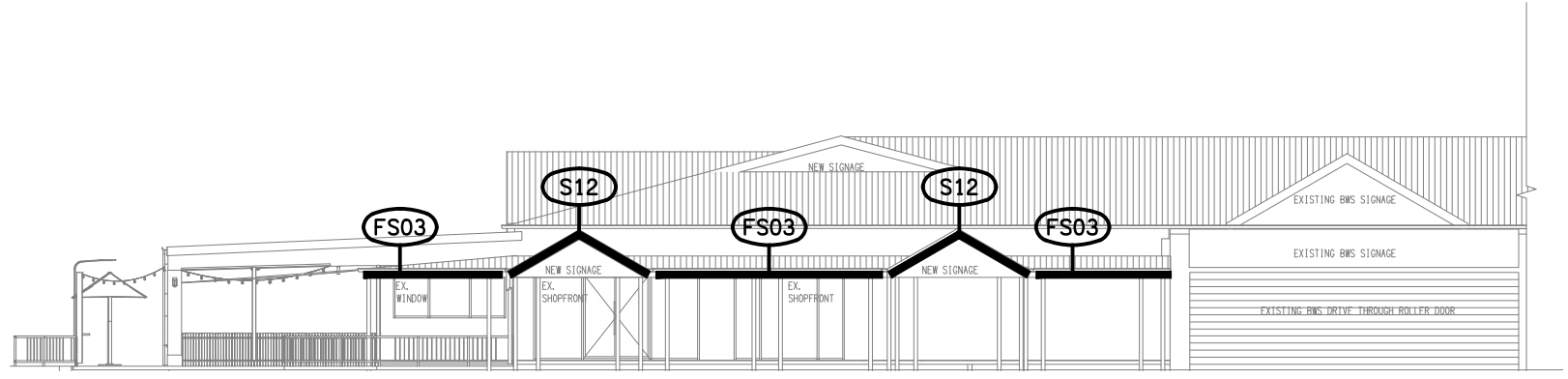


NOTE
ALL ELECTRICAL PENETRATIONS THROUGH THE ROOF SHEETING ARE TO BE IN LINE WITH THE STRUCTURAL OR MECHANICAL SERVICES PENETRATIONS TO AVOID DEDICATED FLASHINGS FOR THE ELECTRICAL SERVICES.

ROOF PLAN
SIGNAGE & LIGHTING
SCALE 1: 200



EAST
EXTERNAL BUILDING ELEVATION
SCALE 1: 200



NORTH
EXTERNAL BUILDING ELEVATION
SCALE 1: 200