



ELECTRICAL DESIGN GROUP

ELECTRICAL BUILDING SERVICES CONSULTANTS

P.O. Box 15, SHERWOOD Q. 4075

Phone: (07) 3278 4375

Website: www.edg.net.au Email: brisbane@edg.net.au

C3298a - BYD BRISBANE AIRPORT - OFFICE UPGRADE

C3298a-0001(D).xls

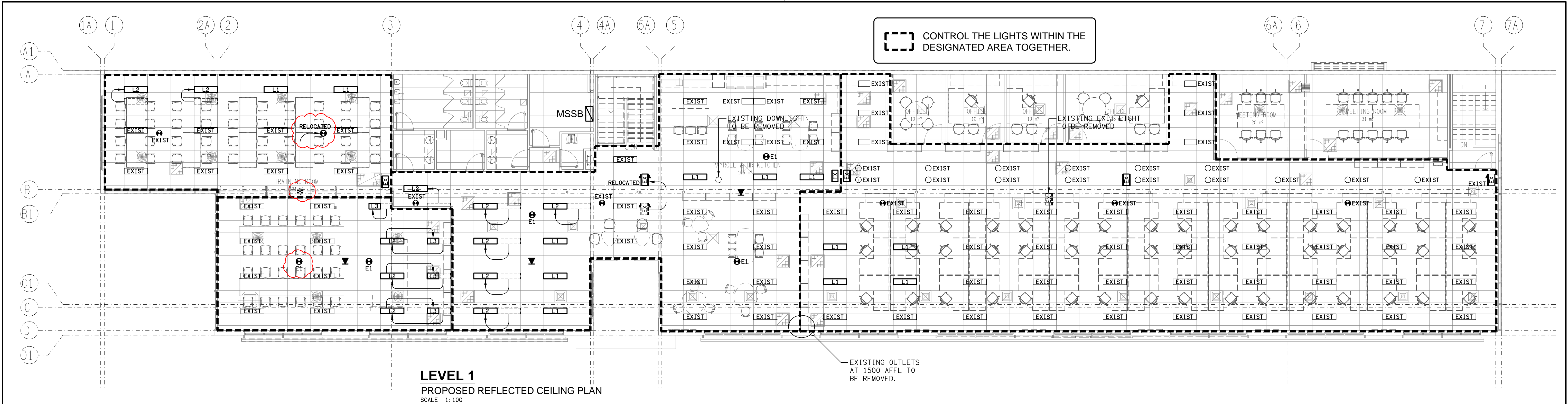
ELECTRICAL SERVICES CONTRACT DOCUMENT SCHEDULE

REVISION D - 23 JANUARY 2025

ISSUING INFORMATION				DATE OF ISSUE									
	DAY	MONTH	YEAR	REASON FOR ISSUE	10	01	10	23					
					09	10	10	01					
					24	24	24	25					
					A	C	P	C					
A = APPROVAL		C = CONSTRUCTION		N = COORDINATION		P = PRELIMINARY		T = TENDER					

DISTRIBUTION				NUMBER OF COPIES							
WWW.EDG.NET.AU				1E	1E		1E				
WIM ARCHITECTS				1E	1E		1E				
RALPH ENGINEERING CONCEPTS						1E					
P = PRINT				T = TRACING				D = DISC			
				E = EMAIL				F = FAX			

DOCUMENTS				REVISION							
C3298a-E01.dwg	LEGEND & LEVEL 1 PLANS			A	B	C	D				
C3298a-E02.dwg	GROUND LEVEL PLANS			A	B	C	D				
C3298a-0001.xls	CONTRACT DOCUMENT SCHEDULE			A	B	C	D				



LEVEL 1
PROPOSED REFLECTED CEILING PLAN
SCALE 1:100

LEGEND

- 20A SINGLE 20MP POWER OUTLET. TYPE CLIPSAL C2000 WHITE
- DOUBLE 10AMP POWER OUTLET. TYPE CLIPSAL C2000 WHITE
- SIGNAGE OUTLET. LOCATE IN A CONCEALED POSITION COORDINATED WITH THE SIGNAGE SUPPLIER.
- ONE-WAY LIGHT SWITCH. TYPE CLIPSAL C2000 WHITE
- CAT-6 RJ45 COMMUNICATIONS OUTLET CABLED TO CR-A VIA A CAT-6 UTP CABLE. TYPE CLIPSAL C2000 WHITE
- CR EXISTING COMMUNICATIONS RACK TO BE PROVIDED WITH ADDITIONAL PATCH PANELS THAT MATCH THE EXISTING TO ACCOMMODATE THE ADDITIONAL COMMUNICATIONS OUTLETS. UPDATE THE PORT NUMBERING.
- NEW 85 x 50 NATURAL ANODISED FLOOR TO CEILING TWO CHANNEL SERVICES DUCT. TYPE ECD SP8550.
- E1 E1: GENERAL EMERGENCY LIGHT. RECESSED NON-MAINTAINED EMERGENCY EVACUATION FITTING. AS2293 CLASSIFICATION CO - D25 C90 - D25
- EX: EMERGENCY EXIT LIGHT. MAINTAINED EXIT LUMINAIRE C/W 24m VIEWING DISTANCE LOGO AND DIRECTIONAL ARROWS AS SHOWN. MOUNT BETWEEN 2100 AND 2700 AFFL OR DIRECTLY ABOVE THE DOOR. AS2293 CLASSIFICATION CO - D3.2 C90 - E3.2
- EXIST EXISTING FITTING TO REMAIN AS IS.
- REMOVE EXISTING FITTING TO BE REMOVED.
- L1: NEW 300 x 1200 FLAT PANEL LED TROFFER TO MATCH THE EXISTING ADJACENT TROFFER.
- L2: RELOCATE THE EXISTING 300 x 1200 TROFFER.
- L3: RELOCATE THE EXISTING 300 x 600 TROFFER.
- L4: NEW RECESSED DOWNLIGHT TO MATCH THE EXISTING ADJACENT RECESSED DOWNLIGHT.
- L5: NEW 300 x 600 FLAT PANEL LED TROFFER TO MATCH THE EXISTING ADJACENT TROFFER.
- L6: EXISTING EXTERNAL CARPARK LIGHT TO BE RELOCATED.
- L7: NEW EXTERNAL CARPARK LIGHT TO MATCH THE EXISTING RELOCATED L6 FITTING.

LEGEND

- MSSB PROVIDE THE MSSB WITH A NEW 3-PHASE, 40A, 6mm² CIRCUIT FROM THE LOCAL DISTRIBUTION BOARD.

NOTES

1. EXTENT OF WORKS

THE ELECTRICAL SERVICES SUB-CONTRACT INCLUDES BUT IS NOT LIMITED TO THE FOLLOWING:

- SUPPLY AND INSTALLATION OF ALL COMPONENTS FORMING PART OF THE ELECTRICAL SERVICES.
- INSPECTIONS.
- TESTING AND COMMISSIONING.
- MAINTENANCE.
- CABLEING, CABLE SUPPORT SYSTEMS AND ACCESS.
- POWER DISTRIBUTION.
- LIGHTING.
- COMMUNICATIONS CABLEING.
- REMOVE ALL EXISTING ELECTRICAL SERVICES MADE REDUNDANT BY THE WORKS.
- THE EXISTING ELECTRICAL SERVICES NOT REFERENCED OR SHOWN ARE TO REMAIN AS IS.
- ALL MINOR COMPONENTS AND INCIDENTAL WORKS NOT SPECIFICALLY REFERRED TO, HOWEVER NECESSARY TO COMPLETE THE ELECTRICAL SERVICES INSTALLATION SUCH THAT IT IS HANDED OVER COMPLETE, OPERATIONAL AND FIT FOR THE INTENDED USE.

PRIOR TO COMMENCING WORK CONSULT SITE MANAGEMENT FOR ANY HAZARDOUS MATERIAL AND ASBESTOS REGISTERS AS WELL AS UNDERTAKE A THOROUGH INSPECTION OF THE SITE TO IDENTIFY ANY POTENTIAL HAZARDOUS MATERIALS, ASBESTOS AND HEALTH OR SAFETY RISKS. ADVISE THE CONTRACTOR OF ANY POTENTIAL HAZARDOUS MATERIALS, ASBESTOS AND HEALTH OR SAFETY RISKS IF IDENTIFIED AND DO NOT COMMENCE WORK UNTIL AN APPROPRIATE MANAGEMENT PLAN HAS BEEN DEVELOPED AND AGREED TO BY ALL PARTIES.

SUPPLY ALL LABOUR, MATERIALS, EQUIPMENT, AND ALL OTHER ITEMS, WHETHER MENTIONED IN DETAIL OR NOT, REQUIRED FOR THE SATISFACTORY COMPLETION OF THE ELECTRICAL SERVICES INSTALLATION, LEAVING IN FULL WORKING ORDER TO THE SATISFACTION OF THE PROJECT MANAGER.

ACCEPT FULL RESPONSIBILITY FOR LIASING, ARRANGING AND CO-ORDINATION OF ALL WORKS THAT HAVE AN EFFECT ON OR WILL BE AFFECTED BY THE ELECTRICAL SERVICES.

REFER TO THE EQUIPMENT SCHEDULE FOR ADDITIONAL REQUIREMENTS.

2. STANDARDS

IRRESPECTIVE OF INFORMATION CONTAINED IN THE ELECTRICAL SERVICES DOCUMENTS OR IN INSTRUCTIONS, IT IS THE ELECTRICAL SUB CONTRACTOR'S RESPONSIBILITY TO ENSURE ALL ELECTRICAL SERVICES WORKS ARE INSTALLED IN ACCORDANCE WITH THE REQUIREMENTS OF THE FOLLOWING. REFER ANY DISCREPANCIES BETWEEN THE REQUIREMENTS OF THE FOLLOWING AND/OR THE ELECTRICAL SERVICES DOCUMENTS AND INSTRUCTIONS TO THE ARCHITECT FOR CLARIFICATION PRIOR TO THE PLACING OF ORDERS, FABRICATION OR INSTALLATION OF THE ITEMS/METHODS IN DISCREPANCY.

- NCC BUILDING CODE OF AUSTRALIA.
- ELECTRICITY ACT.
- ELECTRICAL SAFETY ACT.
- AS/NZS3000.
- AS3008.
- WORKPLACE HEALTH AND SAFETY ACT.
- TELECOMMUNICATIONS ACT.
- ACMA REQUIREMENTS.

NOTES

3. WORKMANSHIP

ENSURE THAT THE ELECTRICAL WORK IS PERFORMED BY THE HOLDER OF A CURRENT ELECTRICAL SUB CONTRACTOR LICENSE AND THE SERVICES COVERED BY THE ACMA IS PERFORMED BY THE HOLDER OF THE APPROPRIATE CURRENT ACMA LICENSE. ENSURE THE INSTALLATION AND ALL COMPONENTS, FITTINGS, OUTLETS AND CABLES ARE SUPPLIED AND INSTALLED TO A HIGH STANDARD THROUGHOUT, AND INSTALLED IN A NEAT AND TRADESMAN LIKE MANNER, TO THE CURRENT INDUSTRY STANDARDS. ENSURE ALL MATERIALS AND COMPONENTS OF A SIMILAR TYPE ARE OF THE SAME MANUFACTURER AND INSTALLED IN A UNIFORM MANNER.

IT IS THE ELECTRICAL SUB CONTRACTOR'S RESPONSIBILITY TO ENSURE THAT THE INSTALLATION IS FIT FOR PURPOSE AND IS PROVIDED AS A COMPLETE WORKING INSTALLATION. IT IS THE ELECTRICAL SUB CONTRACTOR'S RESPONSIBILITY TO PROVIDE ALL COMPONENTS, FITTINGS, FIXTURES, SYSTEMS, PROGRAMMING ETC IRRESPECTIVE OF THE LEVEL DETAILED IN THE DOCUMENTS SUCH THAT THE INSTALLATION IS PROVIDED AS A COMPLETE WORKING INSTALLATION.

CONCEAL ALL WIRING AND CONDUITS. EXPOSED CABLEING OR CONDUITS ARE GENERALLY NOT ACCEPTABLE. IT IS NOTED THAT CHASING AND REINSTATEMENT WILL BE REQUIRED. ENSURE ALL COMPONENTS, EQUIPMENT AND MATERIALS SUPPLIED ARE NEW, UNUSED, DESIGNED AND SELECTED TO ENSURE SATISFACTORY OPERATION UNDER VARYING ATMOSPHERIC, CLIMATIC, HUMID TROPICAL CONDITIONS WITHOUT DISTORTION AND DETERIORATION IN ANY PART AFFECTING EFFICIENCY AND RELIABILITY OF THE SYSTEMS. DESIGN AND SELECT ALL EQUIPMENT TO PROVIDE THE NECESSARY SAFETY TO HUMAN LIFE AND PROPERTY DURING OPERATION AND MAINTENANCE WITH PARTICULAR ATTENTION GIVEN TO ELECTRICAL SAFETY AND SEGREGATION PRECAUTIONS.

CHECK THE FINISHED PAINTWORK AROUND THE AREA OF EACH INSTALLATION AND TOUCH UP ALL DAMAGED PARTS AND FINISHES AFTER THE INSTALLATION OF THE ELECTRICAL SERVICES.

ALL WORKS ARE TO BE CARRIED OUT IN ACCORDANCE WITH THE BUILDER'S PROGRAM. ENSURE ALL FINAL LOCATIONS OF OUTLETS AND FITTINGS ARE CO-ORDINATED ONSITE WITH THE ARCHITECT AND ALL OTHER SERVICES, TO THE APPROVAL OF THE PROJECT MANAGER. ALLOW TO CO-ORDINATE THE FINAL LOCATION OF ALL EQUIPMENT, FITTINGS, & OUTLETS, SUCH THAT THEY ARE INSTALLED IN ACCORDANCE WITH THE AS3000 RESTRICTED ZONES, AND ARE NOT COVERED INAPPROPRIATELY.

ENSURE THAT ALL METAL SURFACES ARE SUITABLY PROTECTED AGAINST CORROSION, AND THAT ALL PLASTIC MATERIALS ARE UV STABILISED.

PROVIDE ALL MATERIALS AS NEW, AND OF THE HIGHEST CLASS AVAILABLE FOR THEIR RESPECTIVE TYPES. ENSURE ALL ASPECTS OF THE WORK ARE OF A HIGH STANDARD THROUGHOUT, AND INSTALLED IN A NEAT AND TRADESMAN LIKE MANNER, TO THE CURRENT INDUSTRY STANDARDS.

4. AUTHORITIES

ENSURE ALL OF THE ELECTRICAL SERVICES COMPLY WITH THE REQUIREMENTS OF ALL REGULATORY AUTHORITIES HAVING JURISDICTION OVER THE SITE INCLUDING BUT NOT LIMITED TO THE FOLLOWING:

- ACMA.
- LOCAL COUNCIL.
- LOCAL SUPPLY AUTHORITY.
- STATE GOVERNMENT DEPARTMENT OF ENVIRONMENT AND HERITAGE.
- QLD GOVERNMENT, DIVISION OF WORKPLACE, HEALTH AND SAFETY.
- QLD FIRE AND EMERGENCY SERVICES.

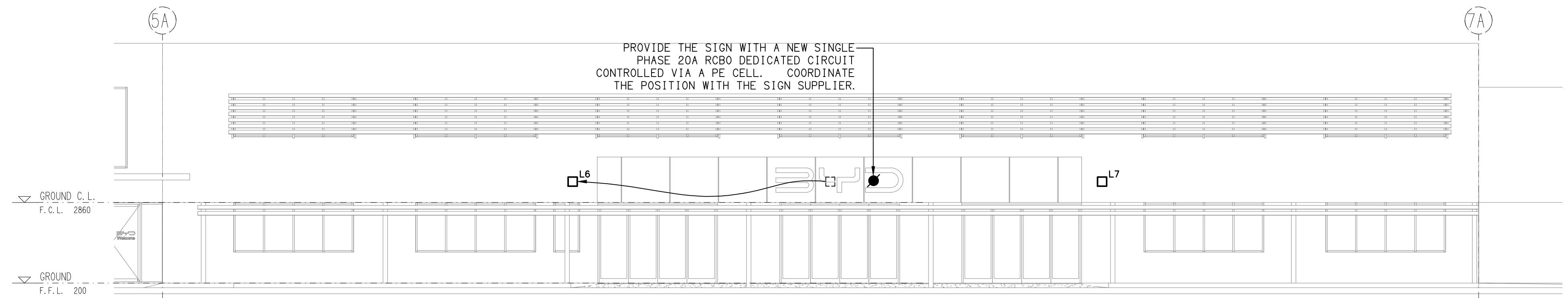
5. CABLES

UNLESS OTHERWISE SPECIFIED, INSTALL AND TERMINATE CABLES IN ACCORDANCE WITH THE MANUFACTURERS' RECOMMENDATIONS. DETERMINE THE FINAL ROUTES TO SUIT THE BUILDING STRUCTURE AND SITE CONDITIONS. UNLESS NOTED OTHERWISE, PROVIDE ALL 240 VOLT POWER AND LIGHTING WIRING AS 2.5mm² TWIN & EARTH STRANDED COPPER CONDUCTORS, PVC INSULATED 0.6/1kV V75 GRADE TO AS3174, PROTECTED BY A 20 AMP CIRCUIT BREAKER. ALL CONDUIT AND FITTINGS TO BE RIGID UPVC TO AS2053, UNLESS NOTED OTHERWISE.

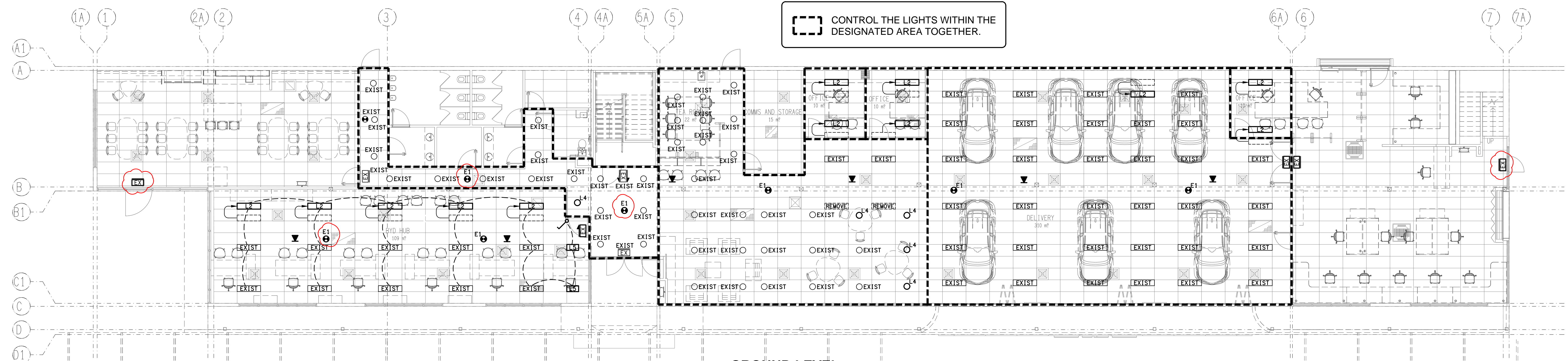
NOTES

6. ABBREVIATIONS

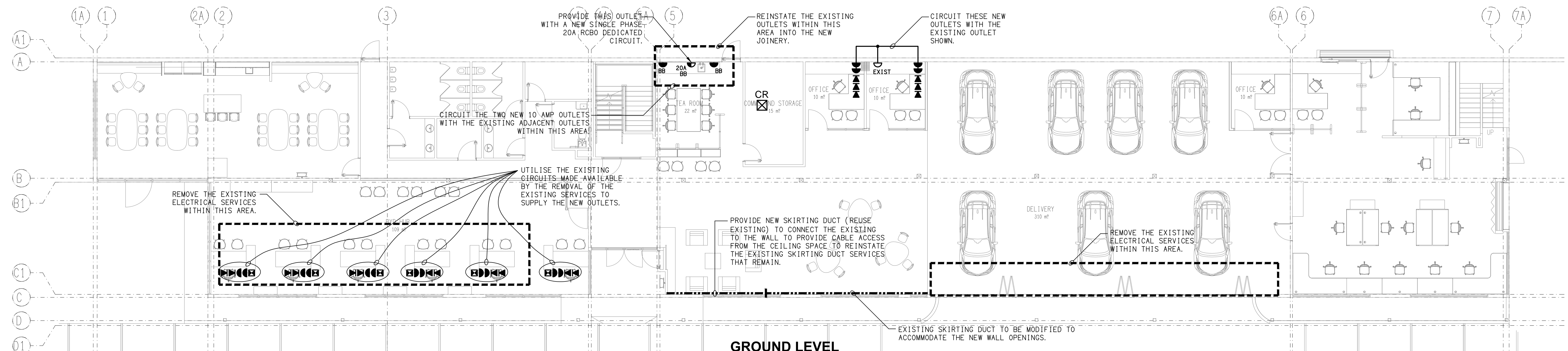
- A - AMP CURRENT RATING
AB - MOUNT ABOVE BENCH.
AFFL - ABOVE FINISHED FLOOR LEVEL.
BB - MOUNT BELOW BENCH.
BH - MOUNT ON BULKHEAD.
CELL - MOUNT ON CEILING.
CS - MOUNT WITHIN CEILING SPACE.
C/W - COMPLETE WITH.
DW - DISHWASHER.
HP - HOT PLATE.
HWS - HOT WATER SYSTEM.
MCB - MINATURE CIRCUIT BREAKER.
MSB - MAIN SWITCHBOARD.
MSSB - MECHANICAL SERVICES SWITCHBOARD.
MW - MICROWAVE.
N - NEON / LED INDICATOR WHEN ON.
NTS - NOT TO SCALE.
OV - OVEN.
RCBO - CIRCUIT PROTECTED VIA A 30mA RESIDUAL CURRENT DEVICE INTEGRAL TO THE CIRCUIT BREAKER. 3-PHASE RCBO TO BE 4-POLE.
REF - REFRIGERATOR.
SUS - MOUNT SUSPENDED FROM CEILING.
UNO - UNLESS NOTED OTHERWISE.
WP - WEATHERPROOF TO IP56 UNO.
500 - NUMBER DENOTES MOUNTING HEIGHT AFFL.



DETAIL
PROPOSED EXTERNAL BUILDING ELEVATION
SCALE 1:100



GROUND LEVEL
PROPOSED REFLECTED CEILING PLAN
SCALE 1:100



GROUND LEVEL
PROPOSED FLOOR PLAN
SCALE 1:100