



ELECTRICAL DESIGN GROUP

ELECTRICAL BUILDING SERVICES CONSULTANTS

P.O. Box 15, SHERWOOD Q. 4075

Phone: (07) 3278 4375

Website: www.edg.net.au Email: brisbane@edg.net.au

C3230a - ST JOHNS ANGLICAN COLLEGE, FOREST LAKE - AQUATIC CENTRE STAGE 2

C3230a-0001(C).xls

ELECTRICAL SERVICES CONTRACT DOCUMENT SCHEDULE

REVISION C - 19 DECEMBER 2025

ISSUING INFORMATION				DATE OF ISSUE									
	DAY	MONTH	YEAR	REASON FOR ISSUE	13	01	19						
					11	12	12						
					25	25	25						
					T	T	T						
A = APPROVAL C = CONSTRUCTION N = COORDINATION P = PRELIMINARY T = TENDER													

DISTRIBUTION		NUMBER OF COPIES							
WWW.EDG.NET.AU		1E	1E	1E					
BSPN ARCHITECTURE		1E	1E	1E					
P = PRINT T = TRACING D = DISC E = EMAIL F = FAX									

DOCUMENTS		REVISION							
C3230a-E01.dwg	LEGEND & DETAILS	A	B	C					
C3230a-E02.dwg	NOTES	A	B	C					
C3230a-E03.dwg	SITE PLAN POWER RETICULATION	A		B					
C3230a-E04.dwg	POOL LEVEL FLOOR PLAN	A	B	C					
C3230a-E05.dwg	BASEMENT STAFF ROOM PLANS	A	B	C					
C3230a-E06.dwg	LOWER GROUND STORAGE & AMENITIES PLANS	A	B	C					
C3230a-E07.dwg	MSB SCHEMATIC	A	B						
C3230a-0001.xls	CONTRACT DOCUMENT SCHEDULE	A	B	C					
C3230a-0002.xls	EQUIPMENT SCHEDULE	A	B	C					
C3230a-0004.xls	DISTRIBUTION BOARD DB-3 SCHEDULE	A							
C3230a-0005.xls	DISTRIBUTION BOARD DB-4 SCHEDULE	A	B	C					
C3230a-0001.zip	FITTING & OUTLET DATASHEETS			A					



ELECTRICAL DESIGN GROUP

ELECTRICAL BUILDING SERVICES CONSULTANTS

P.O. Box 15, SHERWOOD Q. 4075

Phone: (07) 3278 4375 Fax: (07) 3716 0222

Web Site: www.edg.net.au Email: brisbane@edg.net.au

C3230a - ST JOHNS ANGLICAN COLLEGE, FOREST LAKE - AQUATIC CENTRE STAGE 2

C3230a-0002(C).xls

ELECTRICAL EQUIPMENT SCHEDULE

REVISION C - 19 DECEMBER 2025

THE LIGHT FITTING SUPPLIER CONTACT DETAILS MAY BE AVAILABLE ON THE EDG WEBSITE VIA THE FOLLOWING LINK
www.edg.net.au/Links/Lighting.htm

TYPE	LAMPS	DESCRIPTION	COLOUR / ACCESSORY	CATALOGUE No	REV
L1	34W 4000K LED	600 X 600 LAY IN FLAT PLATE LED FITTING C/W REMOTE DRIVER MOUNTED IN THE CEILING T BAR	WHITE TRIM	GAMMA ILLUMINATION AXIS 1548-4K-34W	A
L3	13W 3000K LED	RECESSED DOWNLIGHT C/W REMOTE DRIVER	WHITE TRIM	GAMMA ILLUMINATION COBALT 1402-4K-13W	A
L4	13W 4000K LED	RECESSED DOWNLIGHT C/W REMOTE DRIVER	WHITE TRIM	GAMMA ILLUMINATION COBALT 1402-4K-13W	A
L8	8W 4000K LED	RECESSED 47 DEG BEAM DOWNLIGHT C/W REMOTE DRIVER	WHITE TRIM	GAMMA ILLUMINATION MYLO 1004-WFL-4K-8W	A
L13	A SINGLE HORIZONTAL RUN OF LED STRIP LIGHT 4000K WHITE LEDS AT 12MM SPACING WITH REMOTE CONTROL GEAR. MOUNT THE LED STRIP UNDER THE OVERHEAD CUPBOARDS HARD AGAINST THE SPLASHBACK AS PER THE ARCHITECTURAL JOINERY DETAILS THE SUPPLIER IS TO CUT / JOIN THE LED STRIPS TO SUIT THE SITE DIMENSIONS. DO NOT CUT THE LED STRIPS ON SITE SCREW FIX THE ALUMINIUM SUPPORT IN PLACE.			NEON PRODUCTS AUSTRALIA LF-DFB-NW-300-12 + PR-LIN172153-F	A
L17	36W LED 4000K	SURFACE MOUNTED IP66 1200 LONG BATTEN C/W INTEGRAL DRIVER AND OCCUPANCY SENSOR	LIGHT GREY	GAMMA STORM 1558-CCT-36+SENSOR	A
L23	36W LED 4000K	CHAIN SUSPENDED IP66 1200 LONG BATTEN C/W INTEGRAL DRIVER	LIGHT GREY	GAMMA STORM 1558-CCT-36W	A
L28	1000W 5700K LED PER FITTING	TWO ADJUSTABLE FLOOD LIGHTS MOUNTED ON A CUSTOM 12M HIGH HOT DIPPED TAPERED STEEL POLE FIXED TO THE TOP OF A 4M HIGH MASONRY COLUMN. PROVIDE STRUCTURAL ENGINEER CERTIFICATION OF THE POLE. PROVIDE SHOP DRAWINGS OF THE POLE AND FITTING MOUNTS. ALLOW TO AIM THE FITTINGS DURING DARKNESS AS DIRECTED BY THE ENGINEER ON SITE.	GALVANIZED POLE BLACK FITTING	2 X SAL COMMERCIAL FBC1057A1-ADJ30 PER POLE	A
L29	2000LUMEN / M +/- 10% 4000K 65,000 HOUR L70 24V DC LED C/W A CHROMATICITY MACADAM STEP -2 TOLERANCE.	RECESSED 50MM WIDE LED EXTRUSION C/W REMOTE DRIVER AND A IMPACT RESISTANT OPAL DIFFUSER IT IS ACCEPTABLE TO SUPPLY MULTIPLE SECTIONS OF L29 FITTINGS FROM A SUITABLY SIZED COMMON POWER SUPPLY. LOCATE THE POWER SUPPLY IN AN ACCESSIBLE CONCEALED POSITION NOTED ON THE AS CONSTRUCTED DOCUMENTS. THE FITTING LENGTHS ARE NOTED ON THE DRAWING	WHITE BODY	GAMMA ILLUMINATION GAP-55045-S	B



ELECTRICAL DESIGN GROUP

ELECTRICAL BUILDING SERVICES CONSULTANTS

P.O. Box 15, SHERWOOD Q. 4075

Phone: (07) 3278 4375 Fax: (07) 3716 0222

Web Site: www.edg.net.au Email: brisbane@edg.net.au

C3230a - ST JOHNS ANGLICAN COLLEGE, FOREST LAKE - AQUATIC CENTRE STAGE 2

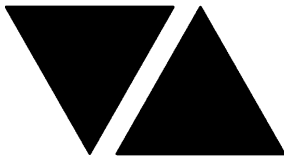
C3230a-0002(C).xls

ELECTRICAL EQUIPMENT SCHEDULE

REVISION C - 19 DECEMBER 2025

THE LIGHT FITTING SUPPLIER CONTACT DETAILS MAY BE AVAILABLE ON THE EDG WEBSITE VIA THE FOLLOWING LINK
www.edg.net.au/Links/Lighting.htm

TYPE	LAMPS	DESCRIPTION	COLOUR / ACCESSORY	CATALOGUE No	REV
L30	1400LUMEN / M +/- 10% 4000K 65,000 HOUR L70 24V DC LED C/W A CHROMATICITY MACADAM STEP -2 TOLERANCE.	RECESSED 50MM WIDE LED EXTRUSION C/W REMOTE DRIVER AND A IMPACT RESISTANT OPAL DIFFUSER IT IS ACCEPTABLE TO SUPPLY MULTIPLE SECTIONS OF L30 FITTINGS FROM A SUITABLY SIZED COMMON POWER SUPPLY. LOCATE THE POWER SUPPLY IN AN ACCESSIBLE CONCEALED POSITION NOTED ON THE AS CONSTRUCTED DOCUMENTS. THE FITTING LENGTHS ARE NOTED ON THE DRAWING	WHITE BODY	GAMMA ILLUMINATION GAP-55045-S	B
L31	1000LUMEN / M +/- 10% 4000K 65,000 HOUR L70 24V DC LED C/W A CHROMATICITY MACADAM STEP -2 TOLERANCE.	RECESSED 50MM WIDE LED EXTRUSION C/W REMOTE DRIVER AND A IMPACT RESISTANT OPAL DIFFUSER IT IS ACCEPTABLE TO SUPPLY MULTIPLE SECTIONS OF L31 FITTINGS FROM A SUITABLY SIZED COMMON POWER SUPPLY. LOCATE THE POWER SUPPLY IN AN ACCESSIBLE CONCEALED POSITION NOTED ON THE AS CONSTRUCTED DOCUMENTS. THE FITTING LENGTHS ARE NOTED ON THE DRAWING	WHITE BODY	GAMMA ILLUMINATION GAP-55045-S	B
L32	2000LUMEN / M +/- 10% 4000K 65,000 HOUR L70 24V DC LED C/W A CHROMATICITY MACADAM STEP -2 TOLERANCE.	SURFACE MOUNTED LED EXTRUSION C/W REMOTE DRIVER AND A IMPACT RESISTANT OPAL DIFFUSER IT IS ACCEPTABLE TO SUPPLY MULTIPLE SECTIONS OF L32 AND L33 FITTINGS FROM A SUITABLY SIZED COMMON POWER SUPPLY. LOCATE THE POWER SUPPLY IN AN ACCESSIBLE CONCEALED POSITION NOTED ON THE AS CONSTRUCTED DOCUMENTS.	WHITE BODY	GAMMA ILLUMINATION GAP 55046	B
L33	1000LUMEN / M +/- 10% 4000K 65,000 HOUR L70 24V DC LED C/W A CHROMATICITY MACADAM STEP -2 TOLERANCE.	SURFACE MOUNTED LED EXTRUSION C/W REMOTE DRIVER AND A IMPACT RESISTANT OPAL DIFFUSER IT IS ACCEPTABLE TO SUPPLY MULTIPLE SECTIONS OF L32 AND L33 FITTINGS FROM A SUITABLY SIZED COMMON POWER SUPPLY. LOCATE THE POWER SUPPLY IN AN ACCESSIBLE CONCEALED POSITION NOTED ON THE AS CONSTRUCTED DOCUMENTS.	WHITE BODY	GAMMA ILLUMINATION GAP 55046	B
L34	20W LED 4000K	WALL MOUNTED IP66 600 LONG BATTEN C/W INTEGRAL DRIVER AND OCCUPANCY SENSOR	LIGHT GREY	GAMMA STORM 1557-CCT-36+SENSOR	A
L35	120W 4000 K LED	ADJUSTABLE FLOOD LIGHT C/W INTERNAL DRIVER MOUNTED ON THE MASONRY POLE AT 2700 TO ILLUMINATE UP INTO THE SALE	BLACK	GAMMA ILLUMINATION ALTUS 1346-4K	A
L36	28W 4000K LED	RECESSED ADJUSTABLE 47 DEG BEAM DOWNLIGHT C/W REMOTE DRIVER	WHITE	GAMMA ILLUMINATION MERCURY 1288-WFL-4K-45W	B
L37	22W 4000K LED	WALL MOUNTED IP 54 DOWNLIGHT C/W INTEGRAL DRIVER. MOUNT AT 2700 AFFL.	BLACK	GAMMA ILLUMINATION TOMMASO 1276-4K-22W	B



ELECTRICAL DESIGN GROUP

ELECTRICAL BUILDING SERVICES CONSULTANTS

P.O. Box 15, SHERWOOD Q. 4075

Phone: (07) 3278 4375 Fax: (07) 3716 0222

Web Site: www.edg.net.au Email: brisbane@edg.net.au

C3230a - ST JOHNS ANGLICAN COLLEGE, FOREST LAKE - AQUATIC CENTRE STAGE 2

C3230a-0002(C).xls

ELECTRICAL EQUIPMENT SCHEDULE

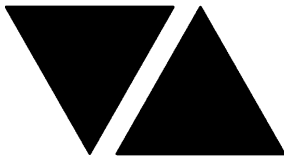
REVISION C - 19 DECEMBER 2025

THE LIGHT FITTING SUPPLIER CONTACT DETAILS MAY BE AVAILABLE ON THE EDG WEBSITE VIA THE FOLLOWING LINK
www.edg.net.au/Links/Lighting.htm

TYPE	LAMPS	DESCRIPTION	COLOUR / ACCESSORY	CATALOGUE No	REV
E1	LED	EMERGENCY LIGHT: RECESSED NON-MAINTAINED EMERGENCY LIGHT. AS2293 CLASSIFICATION C0-D40 - C90-D40.	WHITE	CLEVERTRONICS CLIFE	A
E2	LED	EMERGENCY LIGHT: SURFACE MOUNTED NON-MAINTAINED EMERGENCY LIGHT. AS2293 CLASSIFICATION C0-D40 - C90-D40.	WHITE	CLEVERTRONICS CLIFE-SM	A
EX	LED	EXIT LIGHT: MAINTAINED 24M VIEWING DISTANCE EXIT LIGHT C/W DIFFUSERS & DIRECTIONAL ARROWS AS SHOWN. CEILING SURFACE MOUNT OR WALL MOUNT BETWEEN 2100mm & 2700mm AFFL IF THERE IS NO VERTICAL SURFACE TO MOUNT THE FITTING ON WITHIN THIS RANGE CONFIRM THE MOUNTING HEIGHT WITH THE ENGINEER. PROVIDE A CUSTOM WHITE COUNTER LEAVER MOUNTING BRACKET AS REQUIRED AS2293 CLASSIFICATION C0-D8 - C90-E3.2.	WHITE	CLEVERTRONICS LUB PRO SM	A
EX WP	LED	EXIT LIGHT: MAINTAINED 24M VIEWING DISTANCE EXIT LIGHT C/W DIFFUSERS & DIRECTIONAL ARROWS AS SHOWN AND A IP56 HOUSING CEILING OR WALL MOUNT BETWEEN 2100mm & 2700mm AFFL IF THERE IS NO VERTICAL SURFACE TO MOUNT THE FITTING ON WITHIN THIS RANGE CONFIRM THE MOUNTING HEIGHT WITH THE ENGINEER. AS2293 CLASSIFICATION C0-D3.2 - C90-E2.	WHITE LOGO GREEN BACKGROUND WHITE BODY	CLEVERTRONICS CWELED-A	A
EMERGENCY PACK		LIGHT FITTINGS THAT ARE DESIGNATED AS BEING PROVIDED WITH AN EMERGENCY PACK ARE TO BE PROVIDED WITH AN INTEGRAL AS2293 EMERGENCY PACK. THE FITTINGS ARE TO BE NON MAINTAINED WITH ALL LAMPS SWITCHED AS PER THE LIGHTING CONTROL FOR THAT SPACE UNLESS NOTED OTHERWISE. REFER TO THE SPECIFICATION FOR FURTHER DETAILS OF THE CONFIGURATION AND SWITCHING OF EMERGENCY LIGHTS.			A
PROXIMITY DETECTOR SWITCH (PD)		ADJUSTABLE FLUSH RECESSED 360 DEGREE PIR PRESENCE DETECTOR TO OPERATE THE ASSOCIATED LIGHTS FOR A PRE-SET AMOUNT OF TIME. ADJUST THE TIME AND SENSITIVITY ON SITE AS DIRECTED BY THE ENGINEER. SUBMIT DETAILS OF THE MOVEMENT DETECTOR SWITCH FOR APPROVAL PRIOR TO ORDERING	WHITE	CLIPSAL	A
ONE-WAY LIGHT SWITCH		ONE-WAY LIGHT SWITCH C/W CIRCUIT IDENTIFICATION ON THE FACEPLATE BEHIND THE SURROUND MOUNTED AT 1000mm AFFL UNLESS NOTED OTHERWISE.	WHITE UNLESS NOTED AS BLACK (BK)	CLIPSAL C2000 SERIES FACEPLATE	A
TWO-WAY LIGHT SWITCH		TWO-WAY LIGHT SWITCH C/W CIRCUIT IDENTIFICATION ON THE FACEPLATE BEHIND THE SURROUND MOUNTED AT 1000mm AFFL UNLESS NOTED OTHERWISE.	WHITE UNLESS NOTED AS BLACK (BK)	CLIPSAL C2000 SERIES FACEPLATE	A
WEATHERPROOF LIGHT SWITCH (WP)		IP56 ONE OR TWO-WAY AS NOTED ON DRAWING LIGHT SWITCH C/W CIRCUIT IDENTIFICATION ON THE FACEPLATE BEHIND THE SURROUND MOUNTED AT 1000mm AFFL UNLESS NOTED OTHERWISE.	WHITE	CLIPSAL "56 SERIES"	A

C3230a-0002(C).xls

Pages inc. any attach. 3 of 8



ELECTRICAL DESIGN GROUP

ELECTRICAL BUILDING SERVICES CONSULTANTS

P.O. Box 15, SHERWOOD Q. 4075

Phone: (07) 3278 4375 Fax: (07) 3716 0222

Web Site: www.edg.net.au Email: brisbane@edg.net.au

C3230a - ST JOHNS ANGLICAN COLLEGE, FOREST LAKE - AQUATIC CENTRE STAGE 2

C3230a-0002(C).xls

ELECTRICAL EQUIPMENT SCHEDULE

REVISION C - 19 DECEMBER 2025

THE LIGHT FITTING SUPPLIER CONTACT DETAILS MAY BE AVAILABLE ON THE EDG WEBSITE VIA THE FOLLOWING LINK
www.edg.net.au/Links/Lighting.htm

TYPE	LAMPS	DESCRIPTION	COLOUR / ACCESSORY	CATALOGUE No	REV
SINGLE POWER OUTLET		SINGLE POWER OUTLET C/W CIRCUIT IDENTIFICATION ON THE FACEPLATE BEHIND THE SURROUND MOUNT AT 300mm AFFL U.N.O. RATING 10A U.N.O.	WHITE UNLESS NOTED AS BLACK (BK)	CLIPSAL C2000 SERIES FACEPLATE	A
DOUBLE POWER OUTLET		DOUBLE POWER OUTLET C/W CIRCUIT IDENTIFICATION ON THE FACEPLATE BEHIND THE SURROUND MOUNT AT 300mm AFFL U.N.O. RATING 10A U.N.O.	WHITE UNLESS NOTED AS BLACK (BK)	CLIPSAL C2000 SERIES FACEPLATE	A
DOUBLE POWER OUTLET (USB)		DOUBLE POWER OUTLET C/W USB A AND USB C CHARGER , CIRCUIT IDENTIFICATION ON THE FACEPLATE BEHIND THE SURROUND MOUNT AT 300mm AFFL U.N.O. RATING 10A U.N.O.	WHITE	CLIPSAL C2000 SERIES FACEPLATE	A
WEATHERPROOF POWER OUTLET (WP)		IP54 WEATHERPROOF SINGLE / DOUBLE POWER OUTLET AS NOTED ON DRAWING C/W COVER FLAP OVER SOCKET. MOUNT AT MINIMUM 1100mm AFFL U.N.O. RATING 10A U.N.O.	-	CLIPSAL WSCF227F	A
IP66 SINGLE POWER OUTLET		SINGLE POWER OUTLET IP66 MOUNT AT 300mm AFFL U.N.O. RATING 10A U.N.O.	GREY	CLIPSAL 56 SERIES	B
HAND DRYER CONNECTION (HD)		20A ISOLATING SWITCH WALL MOUNTED AT 2400mm AFFL AND CONNECTED TO THE HAND DRYER UNIT AS PER DETAIL.	WHITE UNLESS NOTED AS BLACK (BK)	CLIPSAL C2000 SERIES FACEPLATE	A
SPECIAL PURPOSE OUTLET		SPECIAL PURPOSE OUTLET TYPE AS NOTED. MOUNT AT 1350mm AFFL U.N.O. RATING 20A U.N.O. CONNECT TO EQUIPMENT VIA FLEXIBLE CONDUIT.			A
SINGLE-PHASE ISOLATOR		SINGLE-PHASE WEATHERPROOF ISOLATOR. MOUNT AT 1350mm AFFL U.N.O. RATING 20A U.N.O. CONNECT TO EQUIPMENT VIA FLEXIBLE CONDUIT.	-	CLIPSAL WHT20	A
THREE-PHASE ISOLATOR		THREE-PHASE WEATHERPROOF ISOLATOR. MOUNT AT 1350mm AFFL U.N.O. RATING 20A U.N.O. CONNECT TO EQUIPMENT VIA FLEXIBLE CONDUIT.	-	CLIPSAL WHT35	A
SIGN CONNECTION		COORDINATE THE LOCATION AND CONNECTION WITH THE SIGN CONTRACTOR ENSURING THE GPO / ISOLATORS ARE PROVIDED WITH APPROPRIATE WEATHER PROTECTION AND ARE CONCEALED FROM VIEW.			A
SPEAKER RECESSED		RECESSED 265 DIA DUAL CONE SPEAKER C/W 100V MULTI-TAP TRANSFORMER AND FLUSH GRILLE. EACH SPEAKER IS TO BE WIRED IN STAR CONFIGURATION TO THE AMPLIFIER MOUNTED IN THE COMMUNICATIONS RACK CR-A1.	WHITE GRILLE	BOSCH LBC 3099/41	A



ELECTRICAL DESIGN GROUP

ELECTRICAL BUILDING SERVICES CONSULTANTS

P.O. Box 15, SHERWOOD Q. 4075

Phone: (07) 3278 4375 Fax: (07) 3716 0222

Web Site: www.edg.net.au Email: brisbane@edg.net.au

C3230a - ST JOHNS ANGLICAN COLLEGE, FOREST LAKE - AQUATIC CENTRE STAGE 2

C3230a-0002(C).xls

ELECTRICAL EQUIPMENT SCHEDULE

REVISION C - 19 DECEMBER 2025

THE LIGHT FITTING SUPPLIER CONTACT DETAILS MAY BE AVAILABLE ON THE EDG WEBSITE VIA THE FOLLOWING LINK
www.edg.net.au/Links/Lighting.htm

TYPE	LAMPS	DESCRIPTION	COLOUR / ACCESSORY	CATALOGUE No	REV
SPEAKER SURFACE MOUNTED (SM)		SURFACE MOUNTED HOUSING C/W RECESSED 265 DIA DUAL CONE SPEAKER C/W 100V MULTI-TAP TRANSFORMER AND FLUSH GRILLE. EACH SPEAKER IS TO BE WIRED IN STAR CONFIGURATION TO THE AMPLIFIER MOUNTED IN THE COMMUNICATIONS RACK CR-A1.	WHITE GRILLE AND HOUSING	BOSCH LBC 3099/41 C/E SURFACE MOUNTING HOUSING	A
HORN		SURFACE MOUNTED ADJUSTABLE MULTI TAPPED 30W IP66 HORN SPEAKER EACH HORN SPEAKER IS TO BE WIRED IN STAR CONFIGURATION TO THE PA SYSTEM AMPLIFIER MOUNTED IN THE COMMUNICATIONS RACK CR-1.	GREY	AUSTRALIAN MONITOR ATC 30	A
CAT 6 COMMUNICATIONS OUTLET		RJ45 CAT-6 COMMUNICATIONS OUTLET, CABLED BACK TO THE COMMUNICATIONS RACK CR-1 TERMINATED ONTO FACILITY PATCH PANELS VIA 4-PAIR CAT-6 UTP CABLE. MOUNT UP TO 3 RJ45 OUTLETS PER MULTI-GANG FACEPLATE WITH SEPARATE PERMANENT LABELLING FOR EACH OUTLET.	WHITE UNLESS NOTED OTHERWISE. CEILING MOUNTED OUTLET TO MATCH CEILING COLOUR	CLIPSAL C2000 SERIES FACEPLATE	A
CAT 6 SURFACE MOUNTED COMMUNICATIONS OUTLET (SM)		SURFACE MOUNTED RJ45 CAT-6 COMMUNICATIONS OUTLET, CABLED BACK TO THE COMMUNICATIONS RACK CR-1 WITH THE EXCEPTION OF THE POOL PLANT ROOM OUTLETS WHICH ARE TO BE CABLED TO CR-3. TERMINATED ONTO FACILITY PATCH PANELS VIA 4-PAIR CAT-6 UTP CABLE. MOUNT UP TO 3 RJ45 OUTLETS PER MULTI-GANG FACEPLATE WITH SEPARATE PERMANENT LABELLING FOR EACH OUTLET. PROVIDE THE SURFACE MOUNTING VIA A SURFACE MOUNTING BOX.	WHITE UNLESS NOTED OTHERWISE. CEILING MOUNTED OUTLET AND MOUNTING BOX TO MATCH CEILING COLOUR	CLIPSAL C2000 SERIES FACEPLATE AND 238-WE MOUNTING BOX	A
CAT 6 CCTV COMMUNICATIONS OUTLET (SM)		SURFACE MOUNTED RJ45 CAT-6 COMMUNICATIONS OUTLET, CABLED BACK TO THE COMMUNICATIONS RACK CR-1 WITH THE EXCEPTION OF THE POOL PLANT ROOM OUTLETS WHICH ARE TO BE CABLED TO CR-3. TERMINATED ONTO FACILITY PATCH PANELS VIA 4-PAIR CAT-6 UTP CABLE. MOUNT UP TO 3 RJ45 OUTLETS PER MULTI-GANG FACEPLATE WITH SEPARATE PERMANENT LABELLING FOR EACH OUTLET. PROVIDE THE SURFACE MOUNTING VIA A SURFACE MOUNTING BOX.	WHITE UNLESS NOTED OTHERWISE. CEILING MOUNTED OUTLET AND MOUNTING BOX TO MATCH CEILING COLOUR	CLIPSAL C2000 SERIES FACEPLATE AND 238-WE MOUNTING BOX	A
WEATHERPROOF COMMUNICATIONS OUTLET (WP)		COMMUNICATIONS OUTLET AS PER THE COMMUNICATIONS OUTLET DESCRIPTION, MOUNTED WITHIN A WEATHERPROOF ENCLOSURE.	WHITE	CLIPSAL 255 SERIES	A
COMMUNICATIONS RACK CR-3		EXISTING COMMUNICATIONS RACK. THE FIBOT AND PATCH PANELS ARE TO BE UPGRADED AS NECESSARY TO ACCOMMODATE THE FIBRE TO CR-4 AND ADDITIONAL COMMUNICATIONS OUTLETS AND SALTO GATEWAY BEING SUPPLIED FROM CR-3			A



ELECTRICAL DESIGN GROUP

ELECTRICAL BUILDING SERVICES CONSULTANTS

P.O. Box 15, SHERWOOD Q. 4075

Phone: (07) 3278 4375 Fax: (07) 3716 0222

Web Site: www.edg.net.au Email: brisbane@edg.net.au

C3230a - ST JOHNS ANGLICAN COLLEGE, FOREST LAKE - AQUATIC CENTRE STAGE 2

C3230a-0002(C).xls

ELECTRICAL EQUIPMENT SCHEDULE

REVISION C - 19 DECEMBER 2025

THE LIGHT FITTING SUPPLIER CONTACT DETAILS MAY BE AVAILABLE ON THE EDG WEBSITE VIA THE FOLLOWING LINK
www.edg.net.au/Links/Lighting.htm

TYPE	LAMPS	DESCRIPTION	COLOUR / ACCESSORY	CATALOGUE No	REV
COMMUNICATIONS RACK CR-4		WALL MOUNTED HINGED 24 RU 600 DEEP COMMUNICATIONS RACK C/W LOCKABLE DOOR, VENTILATED SIDES, TOP AND BOTTOM PANELS AND A 10 PORT REAR POWER RAIL, PATCH PANELS AND FIBRE OPTIC TO ACCOMMODATE THE FIBRE CABLE, LOCAL COMMUNICATIONS OUTLETS AND SALTO GATEWAYS. MOUNT THE TOP OF THE RACK AT 2100 AFFL. THE RACK IS TO MATCH THE EXISTING CR-3 RACK.			A
RECESS KIT (RK)		VERTICALLY ORIENTATED WALL BOX TO ALLOW THE OUTLET TO BE RECESSED WITHIN THE WALL CAVITY	WHITE	REPELEC RECWP1WH	A
DB-3		EXISTING DISTRIBUTION BOARD DB-3 TO BE PROVIDED WITH NEW SWITCHGEAR AND CONTROLS TO ACCOMMODATE THE ADDITIONAL CIRCUITS AS PER THE DB-3 SCHEDULE. THE ASSOCIATED BMS CONTROL CONTACTORS ARE TO BE DIN RAIL MOUNTED WITHIN DB-3.			A
DB-4		PROVIDE A NEW DISTRIBUTION BOARD DB-4 AS PER THE NOTES AND DISTRIBUTION BOARD DB-4 SCHEDULE. PROVIDE A SHOP DRAWING OF THE DB FOR APPROVAL. THE ASSOCIATED BMS CONTROL CONTACTORS ARE TO BE DIN RAIL MOUNTED WITHIN DB-4			A
MSB		EXISTING MAIN SWITCHBOARD TO BE PROVIDED WITH A NEW MCCB TO SUPPLY DB-4.			A
BMS		BUILDING MANAGEMENT SYSTEM PANEL PROVIDED AS PART OF THE ELECTRICAL SUB CONTRACT TO ACCOMMODATE THE ASSOCIATED BMS CONTROLLER AND ACCESSORIES. THE 240 VOLT CONTACTORS ARE TO BE DIN RAIL MOUNTED WITHIN DB-4. THE BMS PANEL IS TO BE MOUNTED BELOW DB-4. PROVIDE A SHOP DRAWING OF THE BMS PANEL FOR APPROVAL.			A
EPP		EXISTING ELECTRICAL POWER PIT			A
CONDUIT ACCESS POINT A1		PROVIDE A1 AS A BLANK FACEPLATE AT 1200 AFFL OVER A DEEP WALL BOX WITH A CONCEALED 50 DIA COMMUNICATIONS CONDUIT BACK TO THE CONCEALED ACCESSIBLE CEILING SPACE ABOVE CR-4. PROVIDE THE CONDUIT WITH A DRAW WIRE			C
CONDUIT ACCESS POINT A2		PROVIDE A2 AS A BLANK SURFACE MOUNTED IP56 METAL JUNCTION BOX SURFACE MOUNTED AT LOW LEVEL WITH THE POSITION CONFIRMED ON SITE WITH THE COLLEGE. PROVIDE CONCEALED POWER AND COMMUNICATIONS CONDUITS AS INDICATED EACH WITH A DRAW WIRE			C
CONDUIT ACCESS POINT A3		PROVIDE A3 AS A BLANK FACEPLATE AT 300 AFFL OVER A DEEP WALL BOX WITH A CONCEALED POWER AND COMMUNICATIONS CONDUITS AS INDICATED BACK TO THE CONCEALED ACCESSIBLE CEILING SPACE ABOVE CR-4 AND DB-4. PROVIDE THE CONDUIT WITH A DRAW WIRE			A
PIT 1		PROVIDE PIT 1 AS A TYPE 2 COMMUNICATIONS PIT AND A TYPE 2 POWER PIT C/W CLASS B LIDS. CONFIRM THE PIT LOCATION ON SITE WITH THE COLLEGE.			C
RADIO MICROPHONE ANTENNA		PROVIDE WEATHER PROOF WIRELESS MICROPHONE RADIO ANTENNA ON THE SOFFIT OF THE STAND CABLED BACK TO CR-4.			A



ELECTRICAL DESIGN GROUP

ELECTRICAL BUILDING SERVICES CONSULTANTS

P.O. Box 15, SHERWOOD Q. 4075

Phone: (07) 3278 4375 Fax: (07) 3716 0222

Web Site: www.edg.net.au Email: brisbane@edg.net.au

C3230a - ST JOHNS ANGLICAN COLLEGE, FOREST LAKE - AQUATIC CENTRE STAGE 2

C3230a-0002(C).xls

ELECTRICAL EQUIPMENT SCHEDULE

REVISION C - 19 DECEMBER 2025

THE LIGHT FITTING SUPPLIER CONTACT DETAILS MAY BE AVAILABLE ON THE EDG WEBSITE VIA THE FOLLOWING LINK
www.edg.net.au/Links/Lighting.htm

TYPE	LAMPS	DESCRIPTION	COLOUR / ACCESSORY	CATALOGUE No	REV
FIRE MIMIC PANEL (FMP)		WALL MOUNTED FIRE MIMIC PANEL TO ALLOW FULL ACCESS TO ALL OF THE MAIN ADMINISTRATION BUILDING SITE FIRE INDICATOR PANELS EVENTS AND CONTROLS TO ALLOW ALL ALARMS TO BE ASSESSED FROM THE FMP AND ALL OF THE EVACUATION CONTROLS FOR THE ENTIRE SITE TO BE UNDERTAKEN FROM THE FMP.			A
FIRE EVACUATION RECESSED SPEAKER		RECESSED 5W TWO-TONE 8-INCH CONE ALERT AND EVACUATION SPEAKER TO AS1670.1 C/W 100V MULTI-TAP TRANSFORMER AND FLUSH GRILLE PAINTED OUT TO MATCH THE CEILING.			A
FIRE EVACUATION SPEAKER SURFACE MOUNTED (SM)		SURFACE MOUNTED 5W TWO-TONE 8-INCH CONE ALERT AND EVACUATION SPEAKER TO AS1670.1 C/W 100V MULTI-TAP TRANSFORMER AND FLUSH GRILLE AND HOUSING PAINTED OUT TO MATCH THE CEILING.			A
FIRE EVACUATION HORN		SURFACE MOUNTED WEATHERPROOF TWO-TONE 30W ALERT AND EVACUATION HORN SPEAKER TO AS1670.1 C/W 100V MULTI-TAP TRANSFORMER. MOUNT AT HIGH LEVEL.			A
SECURITY EQUIPMENT		PROVIDE A NEW WALL MOUNTED EXPANDER PANEL AS AN EXPANSION OF THE SCHOOLS EXISTING SECURITY SYSTEM. CONNECT THE EXPANDER PANEL TO THE EXISTING SYSTEM VIA FIBRE MODEMS.			A
SECURITY INTRUDER DETECTOR		DUAL-TECHNOLOGY MOVEMENT DETECTORS WALL MOUNTED AS PER THE MANUFACTURER'S SPECIFICATION. CONNECT TO THE LOCAL SECURITY EQUIPMENT WITH ONE DETECTOR PER ZONE. PROGRAM THE SECURITY SYSTEM AS REQUIRED TO ACCOMMODATE THE NEW DETECTORS AND CHANGES TO THE SATISFACTION OF THE SCHOOL. SUBMIT DETAILS OF THE DETECTORS INCLUDING THE MOUNTING ARRANGEMENTS FOR APPROVAL PRIOR TO ORDERING.			A
360 DEG SECURITY INTRUDER DETECTOR		DUAL-TECHNOLOGY 360 DEG MOVEMENT DETECTORS CEILING MOUNTED AS PER THE MANUFACTURER'S SPECIFICATION. CONNECT TO THE LOCAL SECURITY EQUIPMENT WITH ONE DETECTOR PER ZONE. PROGRAM THE SECURITY SYSTEM AS REQUIRED TO ACCOMMODATE THE NEW DETECTORS AND CHANGES TO THE SATISFACTION OF THE SCHOOL. SUBMIT DETAILS OF THE DETECTORS INCLUDING THE MOUNTING ARRANGEMENTS FOR APPROVAL PRIOR TO ORDERING.			A
SECURITY PRO TRI TECH INTRUDER DETECTOR		PROFESSIONAL- TRI-TECHNOLOGY PET IMMUNE MOVEMENT DETECTORS WALL MOUNTED AS PER THE MANUFACTURER'S SPECIFICATION. CONNECT TO THE LOCAL SECURITY EQUIPMENT WITH ONE DETECTOR PER ZONE. PROGRAM THE SECURITY SYSTEM AS REQUIRED TO ACCOMMODATE THE NEW DETECTORS AND CHANGES TO THE SATISFACTION OF THE SCHOOL. SUBMIT DETAILS OF THE DETECTORS INCLUDING THE MOUNTING ARRANGEMENTS FOR APPROVAL PRIOR TO ORDERING.			A
ROLLER SHUTTER REED SWITCH (RDR)		ROLLER SHUTTER REED SWITCH MOUNTED AS PER THE MANUFACTURER'S SPECIFICATION. CONNECT TO THE LOCAL SECURITY EQUIPMENT WITH ONE DETECTOR PER ZONE. PROGRAM THE SECURITY SYSTEM AS REQUIRED TO THE SATISFACTION OF THE SCHOOL. SUBMIT DETAILS OF THE REED SWITCH INCLUDING THE MOUNTING ARRANGEMENTS FOR APPROVAL PRIOR TO ORDERING.			C
EVACUATION VISUAL ALARM DEVICE / STROBE (VAD)		CEILING MOUNTED EVACUATION VISUAL ALARM DEVICE / STROBE WITH THE OPERATION CONFIGURED TO THE SATISFACTION OF THE SCHOOL. SUBMIT DETAILS OF THE EVACUATION VISUAL ALARM DEVICE / STROBE FOR APPROVAL PRIOR TO ORDERING.			C



ELECTRICAL DESIGN GROUP

ELECTRICAL BUILDING SERVICES CONSULTANTS

P.O. Box 15, SHERWOOD Q. 4075

Phone: (07) 3278 4375 Fax: (07) 3716 0222

Web Site: www.edg.net.au Email: brisbane@edg.net.au

C3230a - ST JOHNS ANGLICAN COLLEGE, FOREST LAKE - AQUATIC CENTRE STAGE 2

C3230a-0002(C).xls

ELECTRICAL EQUIPMENT SCHEDULE

REVISION C - 19 DECEMBER 2025

THE LIGHT FITTING SUPPLIER CONTACT DETAILS MAY BE AVAILABLE ON THE EDG WEBSITE VIA THE FOLLOWING LINK
www.edg.net.au/Links/Lighting.htm

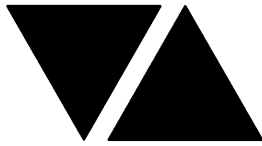
TYPE	LAMPS	DESCRIPTION	COLOUR / ACCESSORY	CATALOGUE No	REV
SECURITY PIEZO		SECURITY FLUSH RECESSED PIEZO SIREN UNLESS NOTED AS SM THEN PROVIDE THE PIEZO AS SURFACE MOUNTED .			A
SECURITY REED SWITCH		SECURITY FLUSH DOOR / GATE REED SWITCH ALL CABLING AND ASSOCIATED CONDUIT TO BE CONCEALED. CONNECT TO THE LOCAL SECURITY EQUIPMENT WITH EACH DOOR / SET OF DOORS CONFIGURED AS A SINGLE ZONE. PROGRAM THE SECURITY SYSTEM AS REQUIRED TO ACCOMMODATE THE NEW REED SWITCHES AND CHANGES TO THE SATISFACTION OF THE SCHOOL. SUBMIT DETAILS OF THE REED SWITCHES INCLUDING THE MOUNTING ARRANGEMENTS FOR APPROVAL PRIOR TO ORDERING.			A
SECURITY KEY PAD (KP)		SECURITY ARMING / DISARMING KEY PAD LOCATED IN A FLUSH RECESSED LOCKABLE HINGED 316 STAINLESS STEEL ENCLOSURE. ALL CABLING AND ASSOCIATED CONDUIT TO BE CONCEALED. CONNECT TO THE LOCAL SECURITY EQUIPMENT. PROGRAM THE SECURITY SYSTEM AS REQUIRED TO THE SATISFACTION OF THE SCHOOL. SUBMIT DETAILS OF THE KEY PAD AND ENCLOSURE FOR APPROVAL PRIOR TO ORDERING.			A
SALTO GATEWAY (S1)		SALTO GATEWAY , CABLED BACK TO THE COMMUNICATIONS RACK CR-4 VIA 4-PAIR CAT-6 UTP CABLE.			A
SALTO GATEWAY (S2)		SALTO GATEWAY , SURFACE MOUNTED. CABLED BACK TO THE COMMUNICATIONS RACK CR-4 VIA 4-PAIR CAT-6 UTP CABLE.			A
SALTO GATEWAY (S3)		SALTO GATEWAY , SURFACE MOUNTED. CABLED BACK TO THE COMMUNICATIONS RACK CR-3 VIA 4-PAIR CAT-6 UTP CABLE.			A
SALTO WIRELESS LOCK (WL)		SALTO WIRELESS LOCK TO BE PROVIDED COMPATIBLE WITH AND FITTED TO THE DOOR.			A

C3230a - ST JOHNS ANGLICAN COLLEGE, FOREST LAKE - AQUATIC CENTRE STAGE 2 C3230a-0004(A).xls

DISTRIBUTION BOARD DB-3 (POOL PLANT)

REVISION A - 13 NOVEMBER 2025

[illegible]



ELECTRICAL DESIGN GROUP

ELECTRICAL BUILDING SERVICES CONSULTANTS

P.O. Box 15, SHERWOOD Q. 4075

Phone: (07) 3278 4375 Fax: (07) 3716 0222

Web Site: www.edg.net.au Email: brisbane@edg.net.au

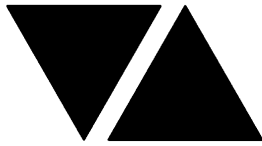
C3230a - ST JOHNS ANGLICAN COLLEGE, FOREST LAKE - AQUATIC CENTRE STAGE 2

C3230a-0005(C).xls

DISTRIBUTION BOARD DB-4 (POOL PLANT)

REVISION C - 19 DECEMBER 2025

FAULT CURRENT: 6kA UTILISING CASCADING CHASSIS SIZE: 2 X 84 POLES CHASSIS RATING: 250A PHASES: 3 MAIN SWITCH: 250 NON AUTO LOAD BREAK SOURCE: MSB SUPPLY CABLE: 1C 150							REV
							A
							B
							B
							A
PROVIDE THE DISTRIBUTION BOARD WITH SURGE PROTECTION AND AN AS2293 TESTING FACILITY. PROVIDE THE DISTRIBUTION BOARD WITH A SPARE WILL WIDTH HORIZONTAL DIN RAIL IN ADDITION TO THE DIN RAIL REQUIRED TO ACCOMMODATE THE CONTROLS SUPPLIED AS PART OF THE CONTRACT WORKS. PROVIDE A BMS CUBICAL INTEGRAL TO THE DB TO ACCOMMODATE THE BMS CONTROLLERS AND CONTACTORS.							A
CIRC	PH	CIRCUIT BREAKER (amps)	CONTROL EQUIPMENT	CABLE SIZE (mm2)	LOCATION	CIRCUIT USE	
P1	1	20	RCBO	2.5	STAND	GPO	A
P2	1	20	RCBO	2.5	BASEMENT	FMP	A
P3	1	20	RCBO	2.5	BASEMENT	OFFICE GPOs	A
P4							B
P5	3	40	MCB	6.0	BASEMENT	AC	A
P6	1	20	RCBO	2.5	BASEMENT	STAFF GPOS	A
P7	1	20	RCBO	2.5	BASEMENT	STAFF GPOS	A
P8	1	20	RCBO	2.5	BASEMENT	CR-4	A
P9	1	20	RCBO	2.5	BASEMENT	SECURITY	A
P10	1	20	RCBO	2.5	BASEMENT	AMENITY	A
P11	3	40	MCB	6.0	BASEMENT	HWS	A
P12	3	20	RCBO TC ON & OFF	2.5	BASEMENT	WORKSHOP EXHAUST	A
P13	3	40	RCBO	6.0	BASEMENT	WORKSHOP 3PH OUTLET	A
P14	1	20	RCBO	2.5	WORKSHOP	GPO	A
P15	1	20	RCBO	2.5	WORKSHOP	GPO	A
P16	1	20	RCBO	2.5	WORKSHOP	GPO	A
P17	1	20	RCBO	2.5	BASEMENT	STORE GPO	A
P18	3	20	RCBO	2.5	BASEMENT	RSD	A
P19	3	20	RCBO	2.5	BASEMENT	RSD	A
P20	1	20	RCBO	2.5	BASEMENT	SUPA TAP	A
P21	1	20	RCBO	2.5	BASEMENT	SUPA TAP	A
P22	1	20	RCBO	2.5	BASEMENT	KITCHENETTE	A
P23	1	20	RCBO	2.5	BASEMENT	REF	A
P24	1	20	RCBO	2.5	BASEMENT	MW	A
P25	1	20	RCBO	2.5	GROUND	MAINTENANCE	A
P26	1	20	RCBO	2.5	GROUND	PUMP	A
P27	3	63	MCB 4-15	10.0	GROUND	6 X 6KW HWS	B
P28	1	20	RCBO	2.5	GROUND	PUMP	A
P29	3	63	MCB 4-16	10.0	GROUND	6 X 6KW HWS	B
P30	1	20	RCBO	2.5	GROUND	HD	A
P31	1	20	RCBO	2.5	GROUND	AMENITY GPO	A
P32	1	20	RCBO	2.5	GROUND	HD	A
P33	1	20	RCBO	2.5	GROUND	HD	A
P34	1	20	RCBO	2.5	GROUND	AMENITY GPO	A
P35	1	20	RCBO	2.5	GROUND	HD	A
P36	1	20	RCBO	2.5	GROUND	BB GPO	A
P37	1	20	RCBO	2.5	GROUND	AB GPO	A
P38	1	20	RCBO	2.5	GROUND	REF	A
P39	1	20	RCBO	2.5	GROUND	REF	A
P40	1	20	RCBO	2.5	GROUND	COFFEE	A
P41	1	20	RCBO	2.5	GROUND	COUNTER	A
P42	1	20	RCBO	2.5	BASEMENT	BMS	A
P43	1	20	RCBO	2.5	WORKSHOP	GPO	A
P44	3	63	MCB 4-17	10.0	GROUND	6 X 6KW HWS	B
P45	3	63	MCB 4-18	10.0	GROUND	6 X 6KW HWS	B
P46	1	20	RCBO	2.5	GROUND	MAINTENANCE	B
P47	1	20	RCBO 4-11	2.5	GROUND	EXHAUST	B
P48	1	20	RCBO 4-12	2.5	GROUND	EXHAUST	B
P49	1	20	RCBO 4-13	2.5	GROUND	EXHAUST	B
P50	1	20	RCBO 4-14	2.5	GROUND	EXHAUST	B
P51	1	20	RCBO	2.5	GROUND	OUTDOOR LEARNING	B



ELECTRICAL DESIGN GROUP

ELECTRICAL BUILDING SERVICES CONSULTANTS

P.O. Box 15, SHERWOOD Q. 4075

Phone: (07) 3278 4375 Fax: (07) 3716 0222

Web Site: www.edg.net.au Email: brisbane@edg.net.au

C3230a - ST JOHNS ANGLICAN COLLEGE, FOREST LAKE - AQUATIC CENTRE STAGE 2

C3230a-0005(C).xls

DISTRIBUTION BOARD DB-4 (POOL PLANT)

REVISION C - 19 DECEMBER 2025

FAULT CURRENT: 6kA UTILISING CASCADING CHASSIS SIZE: 2 X 84 POLES CHASSIS RATING: 250A PHASES: 3							REV
MAIN SWITCH: 250 NON AUTO LOAD BREAK							A
SOURCE: MSB							B
SUPPLY CABLE: 1C 150							B
							A
PROVIDE THE DISTRIBUTION BOARD WITH SURGE PROTECTION AND AN AS2293 TESTING FACILITY. PROVIDE THE DISTRIBUTION BOARD WITH A SPARE WIDE WITH HORIZONTAL DIN RAIL IN ADDITION TO THE DIN RAIL REQUIRED TO ACCOMMODATE THE CONTROLS SUPPLIED AS PART OF THE CONTRACT WORKS. PROVIDE A BMS CUBICAL INTEGRAL TO THE DB TO ACCOMMODATE THE BMS CONTROLLERS AND CONTACTORS.							A
CIRC	PH	CIRCUIT BREAKER (amps)	CONTROL EQUIPMENT	CABLE SIZE (mm2)	LOCATION	CIRCUIT USE	
P52	1	20	RCBO	2.5	GROUND	TOASTER	C
P53	1	20	RCBO	2.5	GROUND	FRYER	C
P54	1	20	RCBO	2.5	BASEMENT	RSD	C
P55	1	20	RCBO	2.5	GROUND	GPO	C
P56	1	20	RCBO	2.5	GROUND	GPO	C
L1	1	20	RCBO 4-1	2.5	GROUND	POOL LIGHT	A
L2	1	20	RCBO 4-1	2.5	GROUND	POOL LIGHT	A
L3	1	20	RCBO 4-1	2.5	GROUND	POOL LIGHT	A
L4	1	20	RCBO 4-1	2.5	GROUND	POOL LIGHT	A
L5	1	20	RCBO 4-1	2.5	GROUND	POOL LIGHT	A
L6	1	20	RCBO 4-2	2.5	GROUND	STAND LIGHTS	A
L7	1	20	RCBO 4-3	2.5	GROUND	STAND LIGHTS	A
L8	1	20	RCBO 4-4	2.5	GROUND	STAND LIGHTS	A
L9	1	20	RCBO 4-5	2.5	GROUND	ACCESS LIGHTS	A
L10	1	20	RCBO 4-6	2.5	GROUND	AMENITY LIGHTS	A
L11	1	20	RCBO 4-7	2.5	GROUND	AMENITY LIGHTS	A
L12	1	20	RCBO 4-8	2.5	GROUND	OUTDOOR LEARNING LIGHTS	A
L13	1	20	RCBO	2.5	GROUND	AMENITY LIGHTS	A
L14	1	20	RCBO	2.5	BASEMENT	STORE LIGHTS	A
L15	1	20	RCBO	2.5	BASEMENT	WORKSHOP LIGHTS	A
L16	1	20	RCBO	2.5	BASEMENT	OFFICE LIGHTS	A
L17	1	20	RCBO	2.5	EXTERNAL	LIGHTING	A
L18	1	20	RCBO 4-9	2.5	EXTERNAL	SIGN	A
L19	1	20	RCBO 4-10	2.5	EXTERNAL	DOWNLIGHTS	B

LEGEND

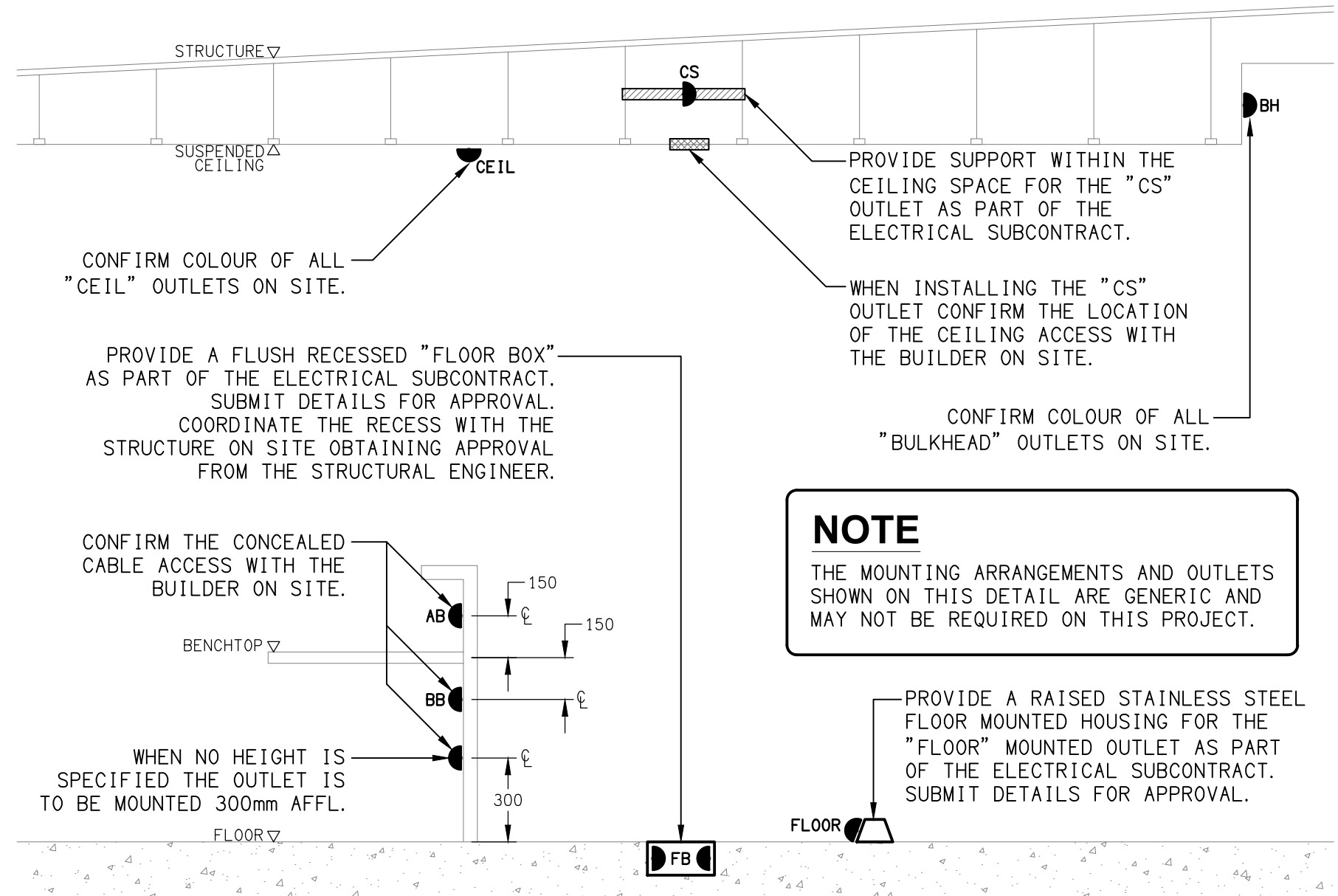
	ELECTRICAL SERVICES SWITCHBOARD.
	SWITCHBOARD / CONTROL PANEL NOT PROVIDED AS PART OF THE ELECTRICAL SUBCONTRACT.
	SINGLE POWER OUTLET.
	DOUBLE POWER OUTLET.
	DOUBLE POWER C/W INTEGRAL USB CHARGERS.
	SPECIAL PURPOSE POWER OUTLET.
	SINGLE PHASE ISOLATOR.
	THREE PHASE ISOLATOR.
	SIGNAGE OUTLET.
	CABLE TRAY / LADDER, TYPE AS NOTED.
	CONDUIT ROUTE.
	CONDUIT ACCESS POINT.
	EXISTING ELECTRICAL POWER PIT.
	HAND DRYER CONNECTION.
	LIGHTING PRESENCE DETECTOR SWITCH.
	LIGHTING CONTROL SWITCH PANEL, TYPE AS NOTED.
	ONE-WAY LIGHT SWITCH.
	TWO-WAY LIGHT SWITCH.
	CEILING FAN SPEED CONTROLLER (FSC).
	CIRCUIT LINE.
	SWITCH LINE.
	POWER CIRCUIT DESIGNATION. DENOTES DB AND CIRCUIT.
	LIGHTING CONTROL CHANNEL REFERENCE.
	ELECTRICAL EQUIPMENT AS NOTED.
	RJ45 COMMUNICATIONS OUTLET.
	RJ45 COMMUNICATIONS OUTLET C/W RECESS KIT.
	CCTV OUTLET.
	LIFT INTERFACE MODULE.
	ACCESS CONTROL GATE INTERFACE.
	ACCESS CONTROL CARD READER.
	ACCESS CONTROL DOOR ELECTRIC STRIKE.
	SECURITY ARMING / DISARMING KEY PANEL.
	SECURITY DIRECTIONAL MOTION DETECTOR.
	SECURITY 360DEG CEILING MOUNTED MOTION DETECTOR.
	SECURITY PRO-TRI-TECH DIRECTIONAL MOTION DETECTOR.
	SECURITY REED SWITCH.
	SECURITY WIRELESS LOCK.
	FIRE MIMIC PANEL.
	PIEZO SIREN.
	RADIO MICROPHONE ANTENNA.

LEGEND

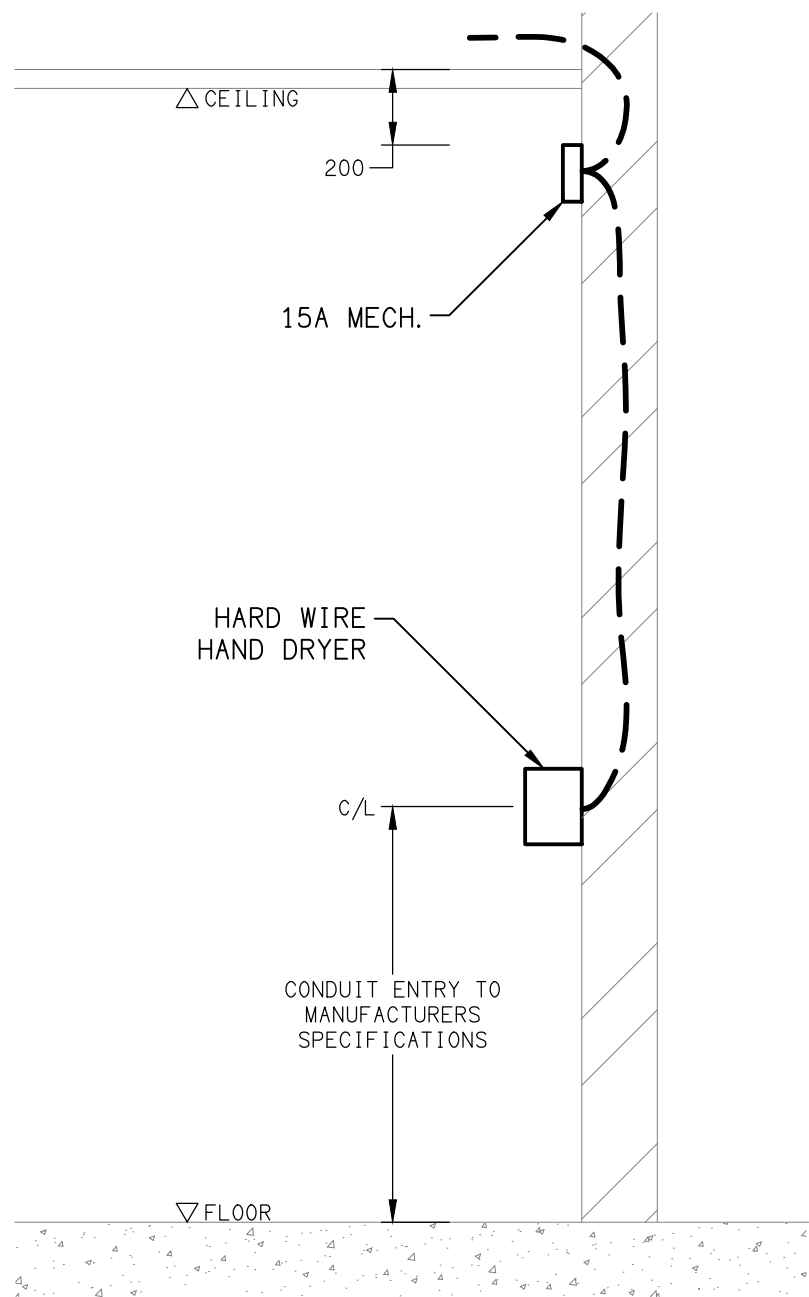
	HORN / HOOTER.
	RECESSED SPEAKER, UNLESS NOTED OTHERWISE.
	FIRE SMOKE DETECTOR.
	FIRE EVACUATION SPEAKER
	FIRE EVACUATION HORN.
	FIRE INDICATOR PANEL, TYPE AS NOTED.
	FUSE.
	SINGLE PHASE.
	THREE PHASE.
	CURRENT TRANSFORMER C/W REMOVABLE LINK.
	FUSE LINK.
	COMBINED FUSE SWITCH.
	CIRCUIT BREAKER.
	ISOLATOR.
	RESIDUAL CURRENT DEVICE.
	CONTACTOR - NORMALLY OPEN.
	CONTACTOR - NORMALLY CLOSED.
	REFER TO DETAIL NOTED FOR THE AREA SHOWN HATCHED. ADDITIONAL OUTLETS & FITTINGS MAY BE SHOWN ON DETAIL.
	SM: DENOTES OUTLET / FITTING TO BE SURFACE MOUNTED.
	E1: GENERAL LED EMERGENCY LIGHT.
	EX: EMERGENCY LED EXIT LIGHT.
	EX WP: WEATHERPROOF EMERGENCY LED EXIT LIGHT.
	Lx: LIGHT FITTING C/W NON-MAINTAINED EMERGENCY BATTERY PACK. TYPE AS NOTED.
	L1: 3300 LUMEN 600 x 600 T-BAR FLAT PLATE FITTING.
	L3: RECESSED DOWNLIGHT.
	L4: RECESSED DOWNLIGHT.
	L8: RECESSED DOWNLIGHT.
	L13: LED STRIP LIGHT MOUNTED UNDER THE OVERHEAD CUPBOARD.
	L17: 1200 LONG SURFACE MOUNTED IP66 BATTEN C/W INTEGRAL SENSOR.
	L23: 1200 LONG SURFACE MOUNTED IP56 BATTEN.
	L28: TWO ADJUSTABLE FLOOD LIGHTS MOUNTED ON A 12M HIGH POLE.
	L29: RECESSED LED EXTRUSION LIGHT. LENGTHS AS NOTED.
	L30: RECESSED LED EXTRUSION LIGHT. LENGTHS AS NOTED.
	L31: RECESSED LED EXTRUSION LIGHT. LENGTHS AS NOTED.
	L32: SURFACE MOUNTED LED EXTRUSION LIGHT.
	L33: SURFACE MOUNTED LED EXTRUSION LIGHT.
	L34: 600 LONG WALL MOUNTED BATTEN.
	L35: ADJUSTABLE POLE MOUNTED FLOOD LIGHT.
	L36: EXTERNAL DOWNLIGHT.
	L37: AMENITY WALL LIGHT.

LEGEND

	S1: SURFACE CAT-6 PLUG FROM THE COMMUNICATIONS RACK.
	S2: SURFACE CAT-6 PLUG C/W INTERCONNECTING CABLE.
	S3: RECESSED CAT-6 PLUG C/W INTERCONNECTING CABLE.
	ROLLER SHUTTER DOOR REED SWITCH.
	EVACUATION VISUAL ALARM DEVICE / STROBE.
	NEW POWER AND COMMUNICATIONS PITS.



DETAIL
TYPICAL OUTLET MOUNTINGS
NOT TO SCALE



DETAIL
HAND DRYER CONNECTION
NOT TO SCALE

NOTES

1. EXTENT OF WORKS

THE ELECTRICAL SERVICES SUB-CONTRACT INCLUDES BUT IS NOT LIMITED TO THE FOLLOWING:

- SUPPLY AND INSTALLATION OF ALL COMPONENTS FORMING PART OF THE ELECTRICAL SERVICES.
- CO-ORDINATION.
- INSPECTIONS.
- TESTING AND COMMISSIONING.
- MAINTENANCE.
- AS CONSTRUCTED DRAWINGS.
- OPERATION AND MAINTENANCE MANUAL.
- CABLING, CABLE SUPPORT SYSTEMS AND ACCESS.
- POWER DISTRIBUTION.
- LIGHTING.
- BMS LIGHTING CONTROL.
- EMERGENCY EXIT LIGHTING.
- LIGHT POLES.
- COMMUNICATIONS CABLING.
- SECURITY.
- ACCESS CONTROL.
- SCHOOL BELL.
- FIRE ALARM SYSTEM.
- ALL MINOR COMPONENTS AND INCIDENTAL WORKS NOT SPECIFICALLY REFERRED TO, HOWEVER NECESSARY TO COMPLETE THE ELECTRICAL SERVICES INSTALLATION SUCH THAT IT IS HANDED OVER COMPLETE, OPERATIONAL AND FIT FOR THE INTENDED USE.

PRIOR TO COMMENCING WORK CONSULT SITE MANAGEMENT FOR ANY HAZARDOUS MATERIAL AND OR ASBESTOS REGISTERS AS WELL AS UNDERTAKE A THOROUGH INSPECTION OF THE SITE TO IDENTIFY ANY POTENTIAL HAZARDOUS MATERIALS. ASBESTOS AND HEALTH OR SAFETY RISKS. ADVISE THE CONTRACTOR OF ANY POTENTIAL HAZARDOUS MATERIALS. ASBESTOS AND HEALTH OR SAFETY RISKS IF IDENTIFIED AND DO NOT COMMENCE WORK UNTIL AN APPROPRIATE MANAGEMENT PLAN HAS BEEN DEVELOPED AND AGREED TO BY ALL PARTIES.

SUPPLY ALL LABOUR, MATERIALS, EQUIPMENT, AND ALL OTHER ITEMS, WHETHER MENTIONED IN DETAIL OR NOT, REQUIRED FOR THE SATISFACTORY COMPLETION OF THE ELECTRICAL SERVICES INSTALLATION, LEAVING IN FULL WORKING ORDER TO THE SATISFACTION OF THE PROJECT MANAGER.

ACCEPT FULL RESPONSIBILITY FOR LIASING, ARRANGING AND CO-ORDINATION ALL WORKS THAT HAVE AN EFFECT ON OR WILL BE AFFECTED BY THE ELECTRICAL SERVICES.

REMOVE ALL OF THE EXISTING ELECTRICAL SERVICES THAT BECOME REDUNDANT DUE TO THE WORKS.

2. WORKMANSHIP

ENSURE THAT THE WORK IS PERFORMED BY THE HOLDER OF A CURRENT ELECTRICAL SUB CONTRACTOR LICENSE. ENSURE THE INSTALLATION AND ALL COMPONENTS, FIXTURES, FITTINGS, OUTLETS AND CABLES ARE SUPPLIED AND INSTALLED TO A HIGH STANDARD THROUGHOUT, AND INSTALLED IN A NEAT AND TRADESMAN LIKE MANNER, TO THE CURRENT INDUSTRY STANDARDS. ENSURE ALL MATERIALS AND COMPONENTS OF A SIMILAR TYPE ARE OF THE SAME MANUFACTURER AND INSTALLED IN A UNIFORM MANNER.

IT IS THE ELECTRICAL SUB CONTRACTOR'S RESPONSIBILITY TO ENSURE THAT THE INSTALLATION IS FIT FOR PURPOSE AND IS PROVIDED AS A COMPLETE WORKING INSTALLATION. IT IS THE ELECTRICAL SUB CONTRACTOR'S RESPONSIBILITY TO PROVIDE ALL COMPONENTS, FITTINGS, FIXTURES, SYSTEMS, PROGRAMMING ETC IRRESPECTIVE OF THE LEVEL DETAILED IN THE DOCUMENTS SUCH THAT THE INSTALLATION IS PROVIDED AS A COMPLETE WORKING INSTALLATION.

CONCEAL ALL WIRING AND CONDUITS. EXPOSED CABLING OR CONDUITS ARE GENERALLY NOT ACCEPTABLE. IT IS NOTED THAT CHASING AND REINSTATEMENT WILL BE REQUIRED. ENSURE ALL COMPONENTS, EQUIPMENT AND MATERIALS SUPPLIED ARE NEW, UNUSED, DESIGNED AND SELECTED TO ENSURE SATISFACTORY OPERATION UNDER VARYING ATMOSPHERIC, CLIMATIC, HUMID TROPICAL CONDITIONS WITHOUT DISTORTION AND DETERIORATION IN ANY PART AFFECTING EFFICIENCY AND RELIABILITY OF THE SYSTEMS. DESIGN AND SELECT ALL EQUIPMENT TO PROVIDE THE NECESSARY SAFETY TO HUMAN LIFE AND PROPERTY DURING OPERATION AND MAINTENANCE WITH PARTICULAR ATTENTION GIVEN TO ELECTRICAL SAFETY AND SEGREGATION PRECAUTIONS.

CHECK THE FINISHED PAINTWORK AROUND THE AREA OF EACH INSTALLATION AND TOUCH UP ALL DAMAGED PARTS AND FINISHES AFTER THE INSTALLATION OF THE ELECTRICAL SERVICES.

ALL WORKS ARE TO BE CARRIED OUT IN ACCORDANCE WITH THE BUILDER'S PROGRAM. ENSURE ALL FINAL LOCATIONS OF OUTLETS AND FITTINGS ARE CO-ORDINATED ONSITE WITH THE ARCHITECT AND ALL OTHER SERVICES, TO THE APPROVAL OF THE PROJECT MANAGER. ALLOW TO CO-ORDINATE THE FINAL LOCATION OF ALL EQUIPMENT, FITTINGS, & OUTLETS, SUCH THAT THEY ARE INSTALLED IN ACCORDANCE WITH THE AS3000 RESTRICTED ZONES, AND ARE NOT COVERED INAPPROPRIATELY.

ENSURE THAT ALL METAL SURFACES ARE SUITABLY PROTECTED AGAINST CORROSION, AND THAT ALL PLASTIC MATERIALS ARE UV STABILISED.

PROVIDE ALL MATERIALS AS NEW, AND OF THE HIGHEST CLASS AVAILABLE FOR THEIR RESPECTIVE TYPES. ENSURE ALL ASPECTS OF THE WORK ARE OF A HIGH STANDARD THROUGHOUT, AND INSTALLED IN A NEAT AND TRADESMAN LIKE MANNER, TO THE CURRENT INDUSTRY STANDARDS.

3. STANDARDS

IRRESPECTIVE OF INFORMATION CONTAINED IN THE ELECTRICAL SERVICES DOCUMENTS OR IN INSTRUCTIONS, IT IS THE ELECTRICAL SUB CONTRACTOR'S RESPONSIBILITY TO ENSURE ALL ELECTRICAL SERVICES WORKS ARE INSTALLED IN ACCORDANCE WITH THE REQUIREMENTS OF THE FOLLOWING. REFER ANY DISCREPANCIES BETWEEN THE REQUIREMENTS OF THE FOLLOWING AND/OR THE ELECTRICAL SERVICES DOCUMENTS AND INSTRUCTIONS TO THE ARCHITECT FOR CLARIFICATION PRIOR TO THE PLACING OF ORDERS, FABRICATION OR INSTALLATION OF THE ITEMS/METHODS IN DISCREPANCY.

- NCC BUILDING CODE OF AUSTRALIA.
- ELECTRICITY ACT.
- ELECTRICAL SAFETY ACT.
- AS/NZS3000.
- AS3008.
- AS1670.
- WORKPLACE HEALTH AND SAFETY ACT.
- TELECOMMUNICATIONS ACT.
- ACMA REQUIREMENTS.

4. AUTHORITIES

ENSURE ALL OF THE ELECTRICAL SERVICES COMPLY WITH THE REQUIREMENTS OF ALL REGULATORY AUTHORITIES HAVING JURISDICTION OVER THE SITE INCLUDING BUT NOT LIMITED TO THE FOLLOWING:

- ACMA.
- LOCAL COUNCIL.
- LOCAL SUPPLY AUTHORITY.
- STATE GOVERNMENT DEPARTMENT OF ENVIRONMENT AND HERITAGE.
- OLD GOVERNMENT, DIVISION OF WORKPLACE, HEALTH AND SAFETY.
- OLD FIRE AND RESCUE AUTHORITY.

5. CABLES

UNLESS OTHERWISE SPECIFIED, INSTALL AND TERMINATE CABLES IN ACCORDANCE WITH THE MANUFACTURERS' RECOMMENDATIONS. DETERMINE THE FINAL ROUTES TO SUIT THE BUILDING STRUCTURE AND SITE CONDITIONS. UNLESS NOTED OTHERWISE, PROVIDE ALL 240 VOLT POWER AND LIGHTING WIRING AS 2.5mm² TWIN & EARTH STRANDED COPPER CONDUCTORS, PVC INSULATED 0.6/1kV V75 GRADE TO AS3174, PROTECTED BY A 20 AMP CIRCUIT BREAKER. ALL CONDUIT AND FITTINGS TO BE RIGID UPVC TO AS2053, UNLESS NOTED OTHERWISE.

NOTES

6. POWER DISTRIBUTION

THE POWER DISTRIBUTION COMPONENT OF THIS CONTRACT INCLUDES PROVIDING A NEW MCCB IN THE EXISTING MSB TO PROTECT A NEW UNDERGROUND SUBMAIN TO THE NEW DISTRIBUTION BOARD DB-4.

UTILISE THE EXISTING UNDERGROUND PIT AND CONDUIT SYSTEM AND PROVIDE NEW UNDERGROUND CONDUITS FROM THE ADJACENT PIT TO DB-4.

ALL SWITCHGEAR TO BE SCHNEIDER.

PROVIDE THE EXISTING DISTRIBUTION BOARD DB-3 WITH NEW SWITCHGEAR AND CONTROLS TO ACCOMMODATE THE NEW CIRCUITS AND BMS LIGHTING CONTROL CONTACTORS.

PROVIDE THE DISTRIBUTION BOARD DB-4 AS FOLLOWS:

- WALL MOUNTED.
- IP44 FORM 1.
- LIGHT GREY ENCLOSURE WHITE ESCUTCHEON.
- 3 POINT 92268 KEY LOCKABLE FLUSH HANDLES ON ALL DOORS.
- LIFT OFF HINGES ON ALL DOORS AND ESCUTCHEONS.
- 1/4 TURN LATCHES AND D HANDLES ON ALL ESCUTCHEONS.
- PROVIDE SHOP DRAWINGS FOR APPROVAL.
- 25% SPARE POLES AT PRACTICAL COMPLETION.
- ALL COMPONENTS ARE TO BE LABELLED WITH NON-STICK LABELS.

THE POWER DISTRIBUTION COMPONENT OF THIS CONTRACT INCLUDES, BUT IS NOT LIMITED TO THE FOLLOWING EXTENT OF WORK:

- POWER DISTRIBUTION.
- EARTHING.
- EQUIPOTENTIAL BONDING TO THE POOL.
- MCCB IN THE EXISTING MSB.
- DB-4 SUBMAIN.
- NEW DISTRIBUTION BOARD DB-4.
- NEW COMPONENTS IN THE EXISTING DISTRIBUTION BOARD DB-3.
- CIRCUITS.
- CABLE ACCESS WAYS.
- ISOLATORS AND OUTLETS.
- TESTING AND COMMISSIONING.

7. LIGHTING

ALL OF THE LIGHT FITTINGS, LAMPS AND ACCESSORIES ARE TO BE PROVIDED AS PART OF THIS CONTRACT. THE LIGHTING COMPONENT OF THIS CONTRACT INCLUDES, BUT IS NOT LIMITED TO THE FOLLOWING EXTENT OF WORK:

- LIGHTING.
- LIGHT FITTINGS AND ACCESSORIES.
- EMERGENCY AND EXIT LIGHTING AS NOTED BELOW.
- LIGHT POLES AS NOTED BELOW.
- LIGHTING CONTROL.
- BMS LIGHTING CONTROL AS NOTED BELOW.
- EARTHING OF THE LIGHTING INSTALLATION.
- LIGHTING CONTROL.
- LIGHTING SUBCIRCUITS.
- CABLE ACCESS WAYS.
- TESTING AND COMMISSIONING.

8. BMS CONTROL

BAR-TECH AUTOMATION CONTACT ADAM FRANKLIN 0481 096 972 IS TO BE ENGAGED AS A NOMINATED SUB-CONTRACTOR TO UNDERTAKE THE BMS CONTROL COMPONENT OF THE WORKS.

THE POOL AND AMENITY LIGHTING, HOT WATER AND EXHAUST FANS ARE TO BE CONTROLLED VIA AN EXPANSION OF THE SCHOOLS EXISTING BUILDING MANAGEMENT SYSTEM.

THE EXISTING BMS CONTROLLER ADJACENT DB-3 IS TO BE USED TO CONTROL THE DB-3 CIRCUITS.

A NEW BMS PANEL IS TO BE PROVIDED ADJACENT DB-4 TO CONTROL THE DB-4 CIRCUITS.

EACH CHANNEL IS TO BE PROVIDED AS A SEPARATE OUTPUT. MULTIPLE CIRCUITS CONTROLLED VIA A SINGLE CHANNEL ARE TO BE CONTROLLED VIA MULTIPLE CONTRACTORS THAT OPERATE TOGETHER VIA THE SINGLE CHANNEL. THE BMS CONTACTORS ARE TO BE LOCATED WITHIN THE ASSOCIATED DISTRIBUTION BOARDS.

THE BMS LIGHTING CONTROL COMPONENT OF THIS CONTRACT INCLUDES, BUT IS NOT LIMITED TO THE FOLLOWING EXTENT OF WORK:

- BMS PANEL.
- INTERFACE TO THE CIRCUIT CONTROL CONTACTORS.
- IP NETWORK INTERFACE OF THE NEW BMS PANEL TO THE EXISTING BMS SYSTEM.
- LIGHTING CONTROL.
- BMS INTERFACES.
- PROGRAMMING.
- COMMISSIONING.

9. EMERGENCY AND EXIT LIGHTING

PROVIDE A SINGLE POINT EMERGENCY LIGHTING SYSTEM THAT COMPLIES WITH THE LATEST ISSUE OF ALL PARTS AS2293 AND THE RELEVANT PARTS OF THE NCC BCA. INSTALL EMERGENCY LIGHT FITTINGS NOMINATED AS MAINTAINED WITH THE LAMP PERMANENTLY ON SUPPLIED VIA AN UNSWITCHED ACTIVE MAINS SUPPLY WHEN THE MAINS SUPPLY IS AVAILABLE. WHEN THE MAINS SUPPLY IS NOT AVAILABLE, THE LAMP IS TO REMAIN ON SUPPLIED BY THE EMERGENCY PACK. SINGLE LAMP MAINTAINED EMERGENCY LIGHTS ARE NOT SWITCHED WITH THE LOCAL GENERAL AREA LIGHTING. (THE LAMP IS ALWAYS ON.)

INSTALL EMERGENCY LIGHT FITTINGS NOMINATED AS NON-MAINTAINED WITH THE LAMP OFF WHEN THE MAINS SUPPLY IS AVAILABLE. WHEN THE MAINS SUPPLY IS NOT AVAILABLE THE LAMP IS TO BE SWITCHED ON SUPPLIED BY THE EMERGENCY PACK. UNSWITCHED SINGLE LAMP NON-MAINTAINED EMERGENCY LIGHTS ARE NOT SWITCHED WITH THE LOCAL GENERAL AREA LIGHTING. (THE LAMP IS ON ONLY WHEN THE MAINS SUPPLY IS NOT AVAILABLE.) IF THE FITTING IS BEING SWITCHED, THE LAMP IS TO BE SUPPLIED AND CONTROLLED WITH THE LOCAL GENERAL AREA LIGHTING WHEN THE MAINS SUPPLY IS AVAILABLE. WHEN THE MAINS SUPPLY IS NOT AVAILABLE THE LAMP IS TO BE SWITCHED ON, SUPPLIED BY THE EMERGENCY PACK. (THE LAMP IS ON WHEN TURNED ON WITH THE LOCAL GENERAL LIGHTING OR THE MAIN SUPPLY IS NOT AVAILABLE.)

INSTALL EMERGENCY LIGHTS SUCH THAT THE STATUS INDICATOR L.E.D. IS CLEARLY VISIBLE AND THE TEST BUTTONS ARE READILY ACCESSIBLE. LABEL EACH CIRCUIT BREAKER WHICH CONTROLS THE UNSWITCHED ACTIVE TO EXIT LIGHTS WITH A LABEL FIXED ADJACENT; ENGRAVED PLASTIC LAMINATE, GREEN BACKGROUND WITH WHITE CHARACTERS: -

WARNING
INTERRUPTING SUPPLY WILL DISCHARGE
EMERGENCY LIGHTING BATTERIES

PROVIDE WRITTEN EVIDENCE OF THE INITIAL COMMISSIONING AND TESTING AND TESTING FOR THE DURATION OF THE MAINTENANCE PERIOD IN ACCORDANCE WITH AS 2293.2.

PROVIDE MAINTENANCE OF THE EMERGENCY AND EXIT LIGHTING INSTALLATION INCLUDING RECORDS IN ACCORDANCE WITH THE LATEST ISSUE OF ALL PARTS AS2293 AND THE RELEVANT PARTS OF THE NCC BCA. PROVIDE THE EMERGENCY LIGHTING SYSTEM WITH A SUPPLY SENSING AND TESTING FACILITY IN ACCORDANCE WITH AS 2293.1.

NOTES

10 LIGHT POLES

PROVIDE POLES WITH AN ACCESS PANEL WITHIN THE POLE BASE AND BASE PLATE THAT INCORPORATE A MINIMUM OF FOUR HOLD DOWN BOLTS. PROVIDE POLES DESIGNED SPECIFICALLY TO SUIT THE PROPOSED STRUCTURAL MOUNTING REQUIREMENTS AND LOCAL CONDITIONS AND BE ABLE TO WITHSTAND WIND GUSTS OF 150KM/H. THE DESIGN OF THE POLE AND THE FOOTING IS TO BE UNDERTAKEN BY A RESISTED STRUCTURAL ENGINEER. PROVIDE A CERTIFICATE FROM THE STRUCTURAL ENGINEER INDICATING THE POLES AND MOUNTINGS MEET THE SPECIFIED DESIGN CRITERIA. PROVIDE DETAILED DRAWINGS OF ALL POLES AND MOUNTINGS FOR APPROVAL. PROVIDE A FUSED CONNECTION WITHIN EACH POLE LOCATED BEHIND THE POLE BASE ACCESS PANEL. CONNECT THE POLE TO THE ELECTRICAL EARTH VIA A LUG FIXED TO A STUD WELDED TO THE POLE LOCATED WITHIN THE POLE LOCATED BEHIND THE POLE BASE ACCESS PANEL. TRIM THE HOLD DOWN BOLTS SUCH THAT THEY DO NOT PROTRUDE MORE THAN 15MM ABOVE THE NUT. TREAT THE TRIMMED HOLD DOWN BOLT AGAINST CORROSION AND ENSURE IT DOES NOT CONTAIN SHARP EDGES THAT REPRESENT A HAZARD. PROVIDE A NEAT SMOOTH FINISHED CONCRETE GROUT FILL UNDER THE BASE PLATE ENSURING ANY SPLATTER IS IMMEDIATELY WASHED OFF THE BASE PLATE AND POLE. EXTEND THE CONDUIT INTO THE POLE 50MM ABOVE THE BASE PLATE.

PROVIDE POLES THAT COMPLY WITH AS/NZS 1170.0 STRUCTURAL DESIGN ACTIONS PART 0: GENERAL PRINCIPLES - IMPORTANCE LEVEL 1 WITH A DESIGN WORKING LIFE OF 50 YEARS.

DESIGN THE POLES TO A WIND LOADING AS PER AS/NZS 1170.0 STRUCTURAL DESIGN ACTIONS PART 0: GENERAL PRINCIPLES. THE FRACTION OF CRITICAL DAMPING IS TO BE TAKEN AS 0.05 (ULTIMATE) AND 0.01 (SERVICEABILITY) FOR POLES WITH MORE THAN TWO- (2) OVERLAPS AND 0.02 (ULTIMATE) AND 0.005 (SERVICEABILITY) FOR ALL OTHERS. THE NATURAL FREQUENCY OF THE POLE IS TO BE CALCULATED CONSIDERING VARYING DIAMETERS AND THICKNESS OVER THE HEIGHT OF THE POLE AND USING A 1.1 SAFETY FACTOR FOR THE MASS AT THE TOP OF THE POLE. ENSURE POLE DEFLECTION AT SERVICEABILITY WIND SPEEDS HAVE A DEFLECTION LESS THAN 6.7%.

ENSURE ALL WELDS ARE BY A CONTINUOUS AUTOMATIC GAS SHIELDED ELECTRIC ARC PROCESS COMPLYING WITH THE RELEVANT PARTS OF AS/NZS 1554 STRUCTURAL STEEL WELDING. ENSURE THE LONGITUDINAL SEAM WELDS ON POLE SECTIONS CONFORMS TO GP STANDARDS WHILE BASEPLATE AND SPIGOT WELDS MUST CONFORM TO SP STANDARDS AS MENTIONED IN AS/NZS 1554. WELD SIZES ARE TO BE VERIFIED BY A QUALIFIED STRUCTURAL ENGINEER AND SPECIFIED IN THE ENGINEERING REPORT AND ON WORKSHOP DRAWINGS.

PROVIDE ALL POLES WITH A GALVANISED FOUNDATION BOLT ASSEMBLY COMPLETE WITH POSITIONING TEMPLATE AND TWO- (2) NUTS AND WASHERS PER BOLT PROVIDED TO SUIT THE POLE BASEPLATE. FOUNDATION BOLTS MUST BE MANUFACTURED FROM DEFORMED REINFORCING BARS WITH A NOMINAL YIELD STRESS OF 500 MPA. PROVIDE BOLTS THREADED IN ACCORDANCE WITH AS1275-1985 METRIC SCREW THREADS FOR FASTENERS AND FITTED WITH CLASS 5 NUTS IN ACCORDANCE WITH AS/NZS 1112 ISO METRIC HEXAGON NUTS. FOUNDATION BOLTS MUST BE TIED TO A SUITABLE REINFORCING CAGE. THE LENGTH OF EACH FOUNDATION BOLT MUST ALLOW FOR THE LENGTH OF THE THREAD ABOVE GROUND, A MINIMUM OF 100MM COVER AND A DEVELOPMENT LENGTH IN ACCORDANCE WITH AS3600-1994 CONCRETE STRUCTURES, TABLE 13.1.2.2(A). THE UNDERSIDE OF THE BASEPLATE IS TO BE GROUTED.

THE SECTION CAPACITY OF THE POLE IS TO BE ANALYSED OVER A MINIMUM OF 100 INCREMENTS ACCORDING TO AS4100 STEEL STRUCTURES AND AS/NZS 4600 COLD-FORMED STEEL STRUCTURES. LUMINARIES ARE TO BE ACCESSED BY EXTERNAL MACHINERY E.G. CHERRY PICKERS. LUMINAIRE CROSSARMS SHALL BE DESIGNED TO ENSURE EASY ACCESS OF FITTINGS FOR REPLACEMENT AND AIMING. CLIMBING RUNGS AND MAINTENANCE PLATFORMS ARE NOT REQUIRED.

THE POLE AND ALL STEEL ACCESSORIES ARE TO BE HOT DIP GALVANIZED AFTER FABRICATION IN ACCORDANCE WITH AS/NZS 4680 HOT-DIP GALVANIZED (ZINC) COATINGS ON FABRICATED FERROUS ARTICLES.

ASSEMBLY AND ERECTION ARE TO BE CARRIED OUT ONLY BY QUALIFIED RIGGING PERSONNEL. GROUT THE UNDERSIDE OF ALL POLE BASEPLATES WITHIN SEVEN- (7) DAYS OF INSTALLING THE POLE.

11. COMMUNICATIONS CABLING

THE COMMUNICATIONS CABLING COMPONENT OF THIS CONTRACT INCLUDES THE PROVISION OF A NEW FIBRE CABLE FROM THE EXISTING COMMUNICATIONS RACK CR-3 TO A NEW COMMUNICATIONS RACK CR-4.

PROVIDE THE COMMUNICATIONS CABLING COMPONENT OF THIS CONTRACT IS TO MATCH THE BRAND USED IN THE EXISTING AQUATIC CENTRE STAGE 1 WORKS.

THE COMMUNICATIONS CAT 6 CABLING IS TO BE RUN TO PATCH PANELS WITHIN THE RACK ASSOCIATED WITH THAT AREA. THE COMMUNICATIONS CABLING COMPONENT OF THIS CONTRACT INCLUDES, BUT IS NOT LIMITED TO THE FOLLOWING EXTENT OF WORK:

- COMMUNICATIONS RACK CR-4.
- FIBERS.
- FIBRE CABLING.
- PATCH PANELS.
- CAT 6 COMMUNICATIONS OUTLETS AND CABLING.
- CABLE ACCESS WAYS.
- TESTING AND COMMISSIONING.

THIS CONTRACT INCLUDES CAT 6 OUTLETS / CABLING PROVIDED AS PART OF THE COMMUNICATIONS WORKS FOR IP POE CCTV CAMERAS. THE CAMERAS ARE NOT PART OF THE BUILDING WORKS CONTRACT AND WILL BE PROVIDED BY THE COLLEGE OUTSIDE OF THE CONTRACT.

THE COLLEGE WILL PROVIDE ALL ACTIVE EQUIPMENT, PATCH LEADS AND FLY LEADS.

12. ABBREVIATIONS

- A - AMP CURRENT RATING
- AB - MOUNT ABOVE BENCH.
- AFFL - ABOVE FINISHED FLOOR LEVEL.
- BB - MOUNT BELOW BENCH.
- BH - MOUNT ON BULKHEAD.
- CEIL - MOUNT ON CEILING.
- CS - MOUNT WITHIN CEILING SPACE.
- C/W - COMPLETE WITH.
- HWS - HOT WATER SYSTEM.
- MCB - MINIATURE CIRCUIT BREAKER.
- MCCB - MOULDED CASE CIRCUIT BREAKER.
- MSB - MAIN SWITCHBOARD.
- NW - MICROWAVE.
- N - NEON / LED INDICATOR WHEN ON.
- NTS - NOT TO SCALE.
- OV - OVEN.
- RCBO - CIRCUIT PROTECTED VIA A 30mA RESIDUAL CURRENT DEVICE INTEGRAL TO THE CIRCUIT BREAKER. 3-PHASE RCBO TO BE 4-POLE.
- REF - REFRIGERATOR.
- SUS - MOUNT SUSPENDED FROM CEILING.
- UNO - UNLESS NOTED OTHERWISE.
- WP - WEATHERPROOF TO IP56 UNO.
- 500 - NUMBER DENOTES MOUNTING HEIGHT AFFL.

NOTES

13. SECURITY

THE PACIFIC SECURITY GROUP CONTACT KYLIE BUTCHARD 0410 535 324 IS TO BE ENGAGED AS A NOMINATED SUB-CONTRACTOR TO UNDERTAKE THE SECURITY COMPONENT OF THE WORKS.

THE SECURITY SYSTEM COMPONENT OF THIS CONTRACT INCLUDES THE EXPANSION / UPGRADE OF THE SCHOOLS EXISTING INNER RANGE INTEGRITY ACCESS CONTROL / SECURITY SYSTEM TO PROVIDE INTRUDER DETECTION AND ACCESS CONTROL. THE NEW SECURITY PANELS ARE TO BE MOUNTED ADJACENT CR-4

THIS CONTRACT INCLUDES CAT 6 OUTLETS / CABLING PROVIDED AS PART OF THE COMMUNICATIONS WORKS FOR IP POE CCTV CAMERAS. THE CAMERAS ARE NOT PART OF THE BUILDING WORKS CONTRACT AND WILL BE PROVIDED BY THE COLLEGE OUTSIDE OF THE CONTRACT.

THE SECURITY SYSTEM COMPONENT OF THIS CONTRACT INCLUDES BUT IS NOT LIMITED TO THE FOLLOWING EXTENT OF WORK:

- SECURITY SYSTEM POWER SUPPLY AND DISTRIBUTION.
- EARTHING.
- MOVEMENT DETECTORS.
- PIEZO ALARMS.
- KEY PANELS.
- ZONE EXPANDERS.
- SECURITY NETWORK.
- CABLING.
- PROGRAMMING.
- COMMISSIONING.
- CABLE ACCESS WAYS.

14. ACCESS CONTROL

THE A.B.C. ALARMS PTY. LTD. DIANNE SCALES dianne.scales@abcalarms.com.au PH (07) 3849 1939 IS TO BE ENGAGED AS A NOMINATED SUBCONTRACTOR TO UNDERTAKE THE ACCESS CONTROL COMPONENT OF THE WORKS.

THE ACCESS CONTROL COMPONENT OF THIS CONTRACT INCLUDES THE EXPANSION / UPGRADE OF THE SCHOOLS EXISTING SALTO WIRELESS DOOR CONTROL SYSTEM. ALL OF THE SALTO COMPONENTS, CABLING AND ACCESSORIES ARE TO BE SUPPLIED, INSTALLED AND COMMISSIONED AS PART OF THE ACCESS CONTROL COMPONENT OF THIS CONTRACT.

THE ACCESS CONTROL INCLUDES BUT IS NOT LIMITED TO THE FOLLOWING EXTENT OF WORK:

- SALTO WIRELESS LOCKS.
- SALTO GATEWAYS.
- CABLING.
- PROGRAMMING.
- COMMISSIONING.
- CABLE ACCESS WAYS.

15. SCHOOL BELL

SEQFS CONTACT THOMAS BUXTON 0422 488 621 IS TO BE ENGAGED AS NOMINATED SUB-CONTRACTOR TO UNDERTAKE ALL SCHOOL BELL WORKS.

THE SCHOOL BELL PA SYSTEM COMPONENT OF THIS CONTRACT INCLUDES THE EXPANSION OF THE SCHOOL S EXISTING IP SCHOOL BELL PA SYSTEM.

THE PA COMPONENT OF THIS CONTRACT INCLUDES THE PROVISION OF A CONVENTIONAL 100-VOLT SPEAKER / HORN SYSTEM THROUGHOUT THE INTERNAL AND EXTERNAL WORKS AREA WITH EACH SPEAKER / HORN CABLED IN STAR CONFIGURATION BACK TO CONVENTIONAL AUDIO POWER AMPLIFIERS LOCATED IN THE COMMUNICATIONS RACK CR-4. PROVIDE INTERNAL AND EXTERNAL ZONE AMPLIFIERS CAPABLE OF DRIVING 200% OF ALL OF THE ASSOCIATED BUILDINGS SPEAKERS WHEN TAPPED AT 75%.

EACH SPEAKER AND HORN IS TO BE CABLED INDIVIDUALLY IN STAR CONFIGURATION TO THE RACK.

LOCATE THE AMPLIFIER IN THE TOP RUS OF THE RACK.

THE PA SYSTEM COMPONENT OF THIS CONTRACT INCLUDES BUT IS NOT LIMITED TO THE FOLLOWING EXTENT OF WORK:

- SPEAKERS AND HORNS.
- AMPLIFIERS.
- IP TO AUDIO INTERFACES.
- CABLING.
- PROGRAMMING.
- COMMISSIONING.
- RADIO MICROPHONE ANTENNAS.

PROVIDE AN AUDIO INPUT FOR TESTING. BALANCE AND SET THE VOLUME OF THE PA SYSTEM TO THE SATISFACTION OF THE SCHOOL. ALLOW TO ATTEND SITE TWICE DURING THE DEFECTS AND LIABILITY PERIOD TO ADJUST THE BALANCING AND VOLUME AS DIRECTED BY THE SCHOOL.

16. FIRE ALARM SYSTEM

EVERSAFE FIRE CONTACT CAMPBELL MCDOWALL 0432 394 240 (07) 3399 8988 IS TO BE ENGAGED AS NOMINATED SUB-CONTRACTOR TO UNDERTAKE ALL FIRE ALARM WORKS.

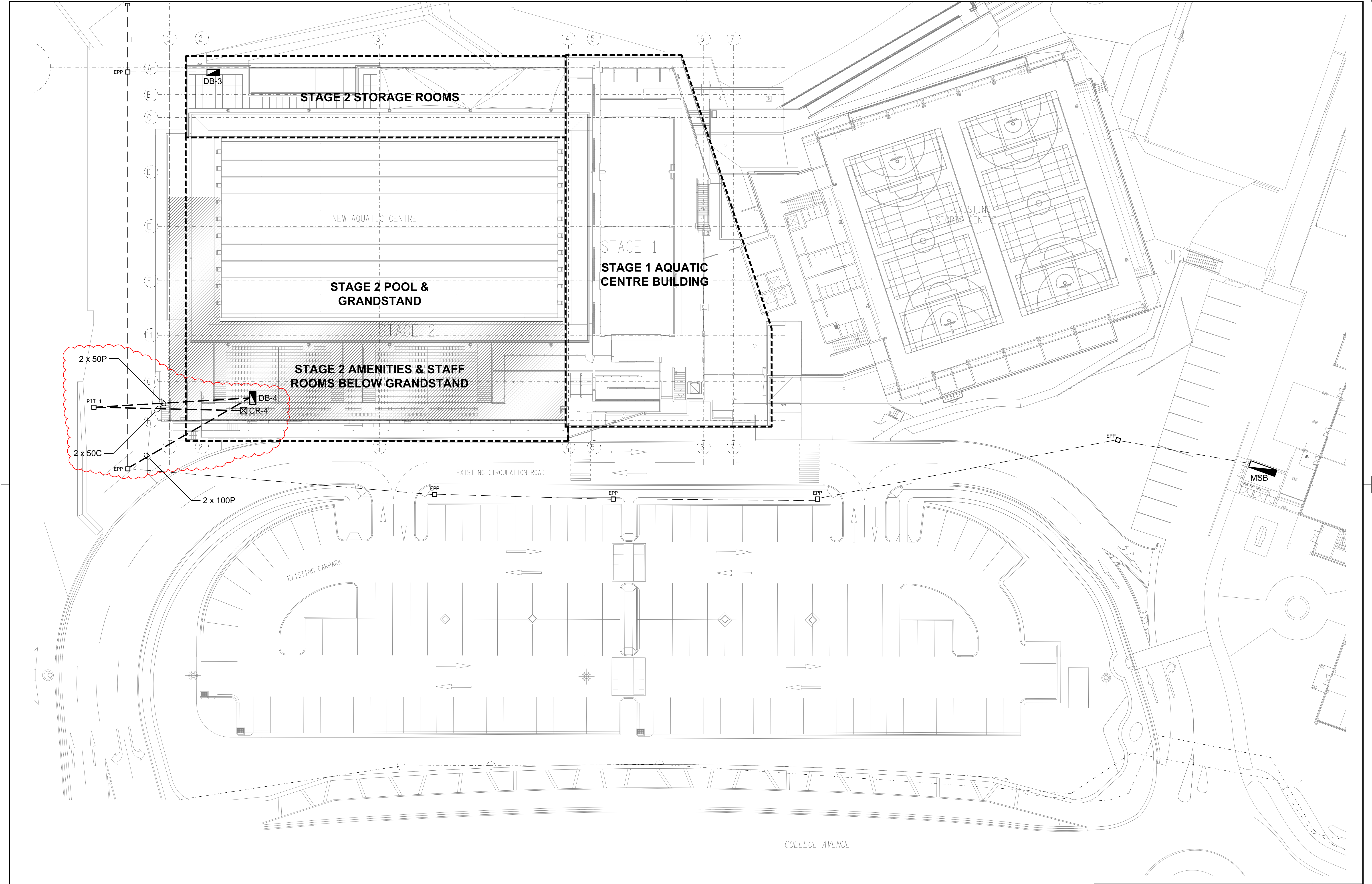
PROVIDE A FIRE MIMIC PANEL (FMP) TO ALLOW FULL ACCESS TO ALL OF THE MAIN ADMINISTRATION BUILDING SITE FIRE INDICATOR PANELS EVENTS AND CONTROLS TO ALLOW ALL ALARMS TO BE ASSESSED FROM THE FMP AND ALL OF THE EVACUATION CONTROLS FOR THE ENTIRE SITE TO BE UNDERTAKEN FROM THE FMP.

PROVIDE SPEAKERS AND HORNS THROUGH OUT THE WORKS AREA TO PROVIDE OCCUPANT WARNING WHICH IS TO BE CONTROLLED BY BOTH THE EXISTING MAIN ADMINISTRATION BUILDING SITE FIRE INDICATOR PANEL AND THE NEW FIRE MIMIC PANEL.

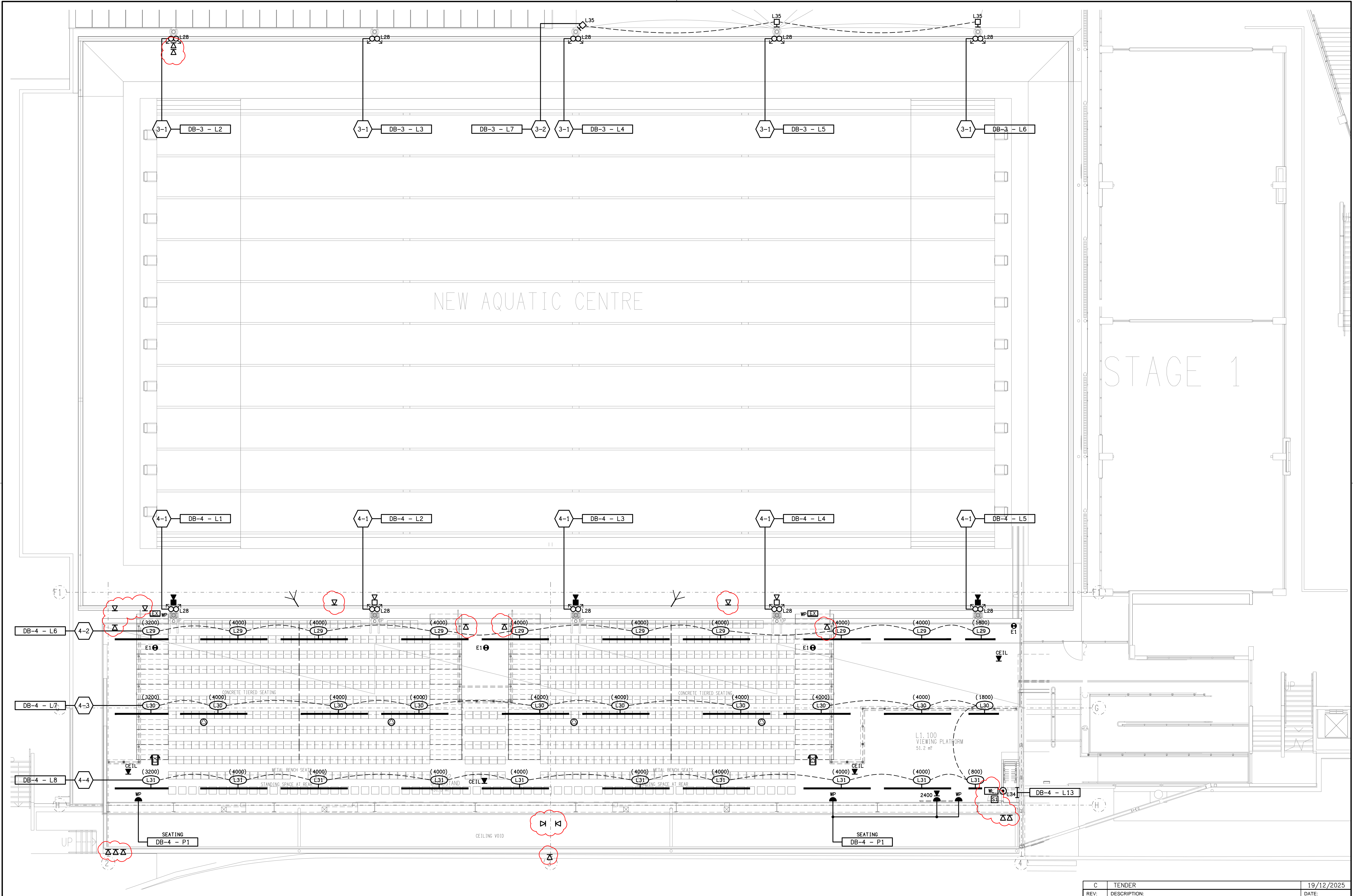
THE FIRE ALARM SYSTEM COMPONENT OF THIS CONTRACT INCLUDES BUT IS NOT LIMITED TO THE FOLLOWING EXTENT OF WORK:

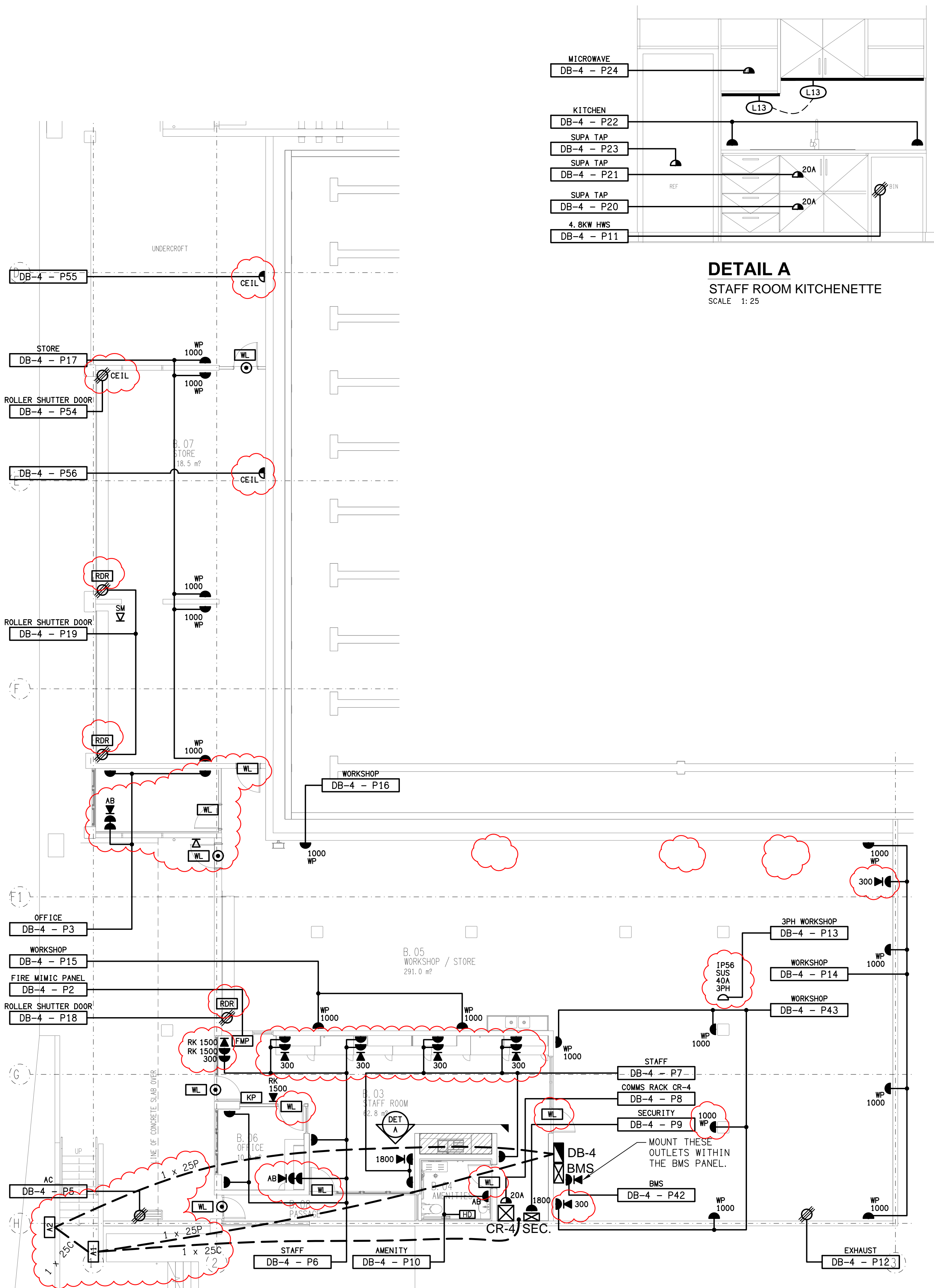
- FIRE MIMIC PANEL
- SPEAKERS AND HORNS.
- AMPLIFIERS.
- CABLING.
- PROGRAMMING.
- COMMISSIONING.
- INTERFACE TO THE MAIN ADMINISTRATION BUILDING SITE FIRE INDICATOR PANEL.
- UPGRADING THE MAIN ADMINISTRATION BUILDING SITE FIRE INDICATOR PANEL AS NECESSARY TO FACILITATE THE WORKS.

ELECTRICAL DESIGN GROUP BRISBANE PTY LTD ACN 092 710 793		THE COPYRIGHT OF THIS DRAWING REMAINS THE PROPERTY OF THE ELECTRICAL DESIGN GROUP.		PROJECT: ST JOHN'S ANGLICAN COLLEGE FOREST LAKE AQUATIC CENTRE STAGE 2 COLLEGE AVENUE, FOREST LAKE	
TRADING AS: ELECTRICAL DESIGN GROUP		USE FIGURED DIMENSIONS IN PREFERENCE TO SCALE.		DRAWING: ELECTRICAL SERVICES NOTES	
ALL DIMENSIONS TO BE VERIFIED ONSITE.		P.O.Box 15, Sherwood Q.4075 Phone: (07) 3278 4375 Email: brisbane@edg.net.au Web: www.edg.net.au		SCALE: NOT TO SCALE AT A1	
				PROJECT NO: C3230a	DRAWING NO: E02
				REVISION: C	

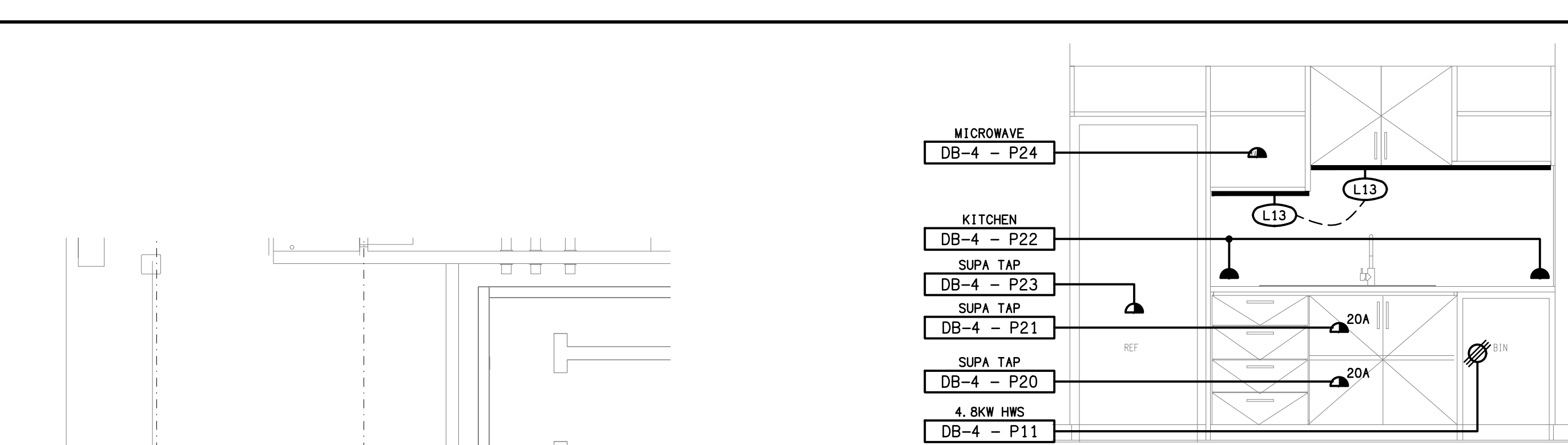


<div><div>ELECTRICAL DESIGN GROUP BRISBANE PTY LTD ACN 092 710 793</div><div>TRADING AS: ELECTRICAL DESIGN GROUP</div></div>		<div>THE COPYRIGHT OF THIS DRAWING REMAINS THE PROPERTY OF THE ELECTRICAL DESIGN GROUP.</div> <div>USE FIGURED DIMENSIONS IN PREFERENCE TO SCALE.</div> <div>ALL DIMENSIONS TO BE VERIFIED ONSITE.</div>		<div><div><div><div></div><div>ELECTRICAL DESIGN GROUP</div></div><div>ELECTRICAL BUILDING SERVICES CONSULTANTS</div><div>BRISBANE GOLD COAST</div><div>P.O.Box 15, Sherwood Q.4075 Phone: (07) 3278 4375 Email: brisbane@edg.net.au Web: www.edg.net.au</div></div></div>		<div>PROJECT: ST JOHN'S ANGLICAN COLLEGE FOREST LAKE AQUATIC CENTRE STAGE 2 COLLEGE AVENUE, FOREST LAKE</div>		<div>DRAWING: ELECTRICAL SERVICES SITE PLAN POWER RETICULATION</div>							
						<div>SCALE: 1:250</div>		<div>AT A1</div>		<div>PROJECT NO: C3230a</div>		<div>DRAWING NO: E03</div>		<div>REVISION: B</div>	

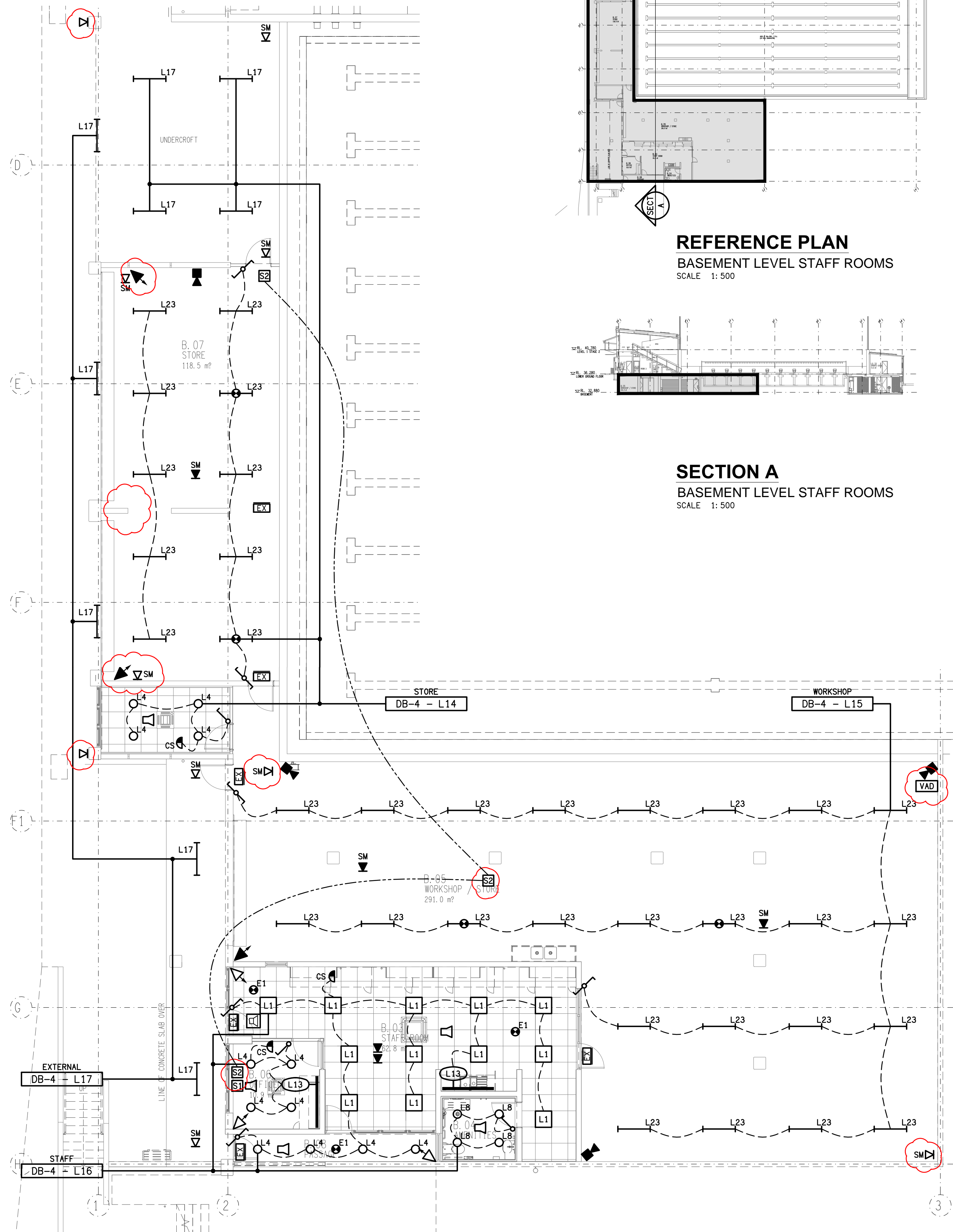




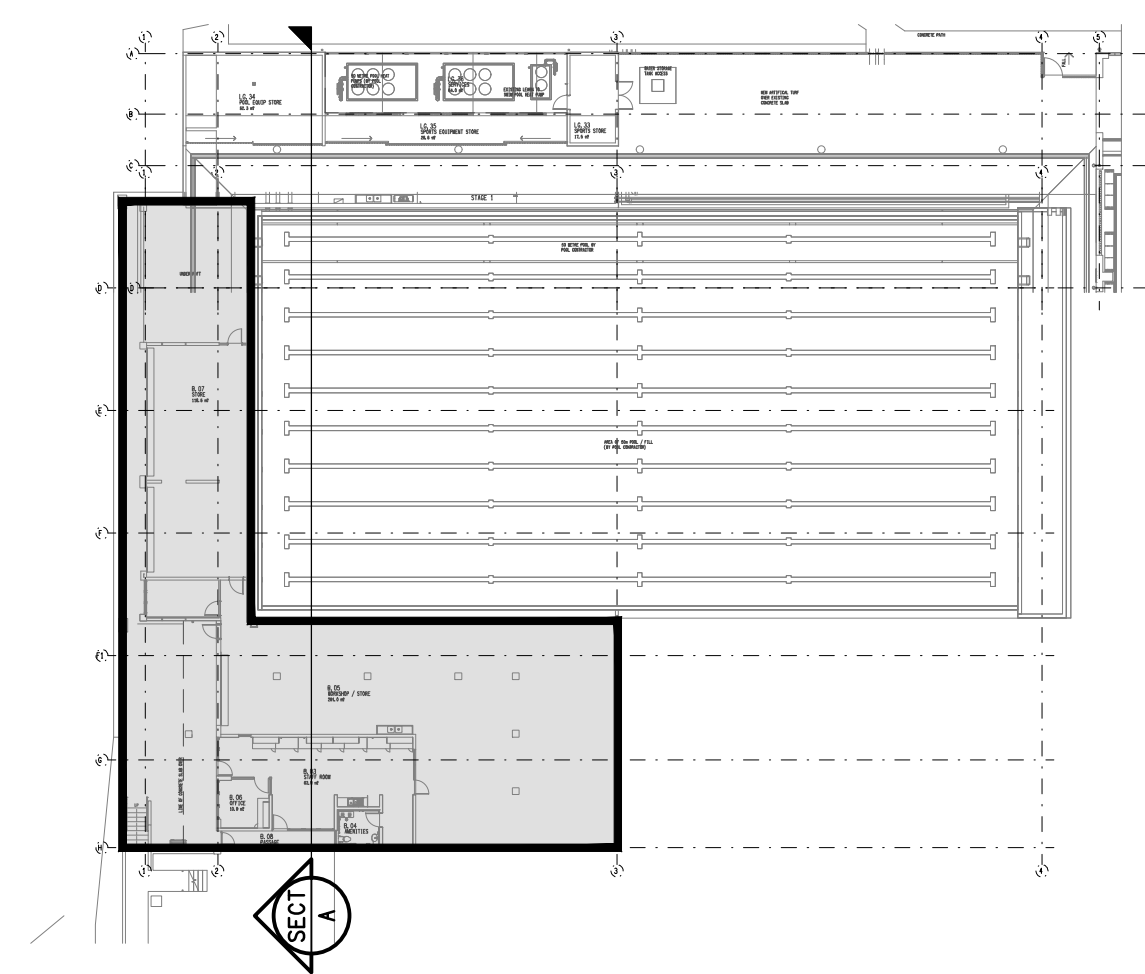
STAFF ROOMS
BASEMENT FLOOR PLAN
SCALE 1: 100



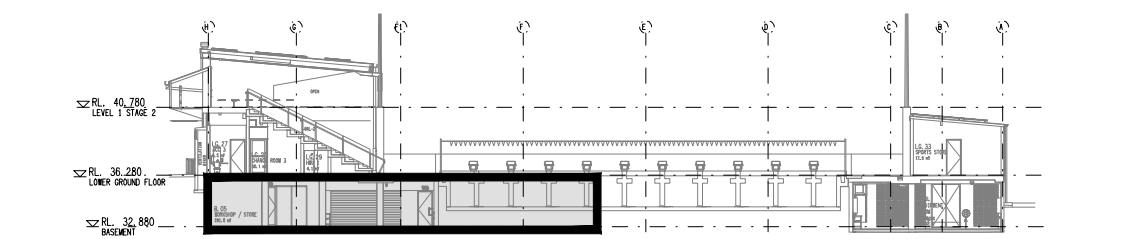
DETAIL A
STAFF ROOM KITCHENETTE
SCALE 1: 25



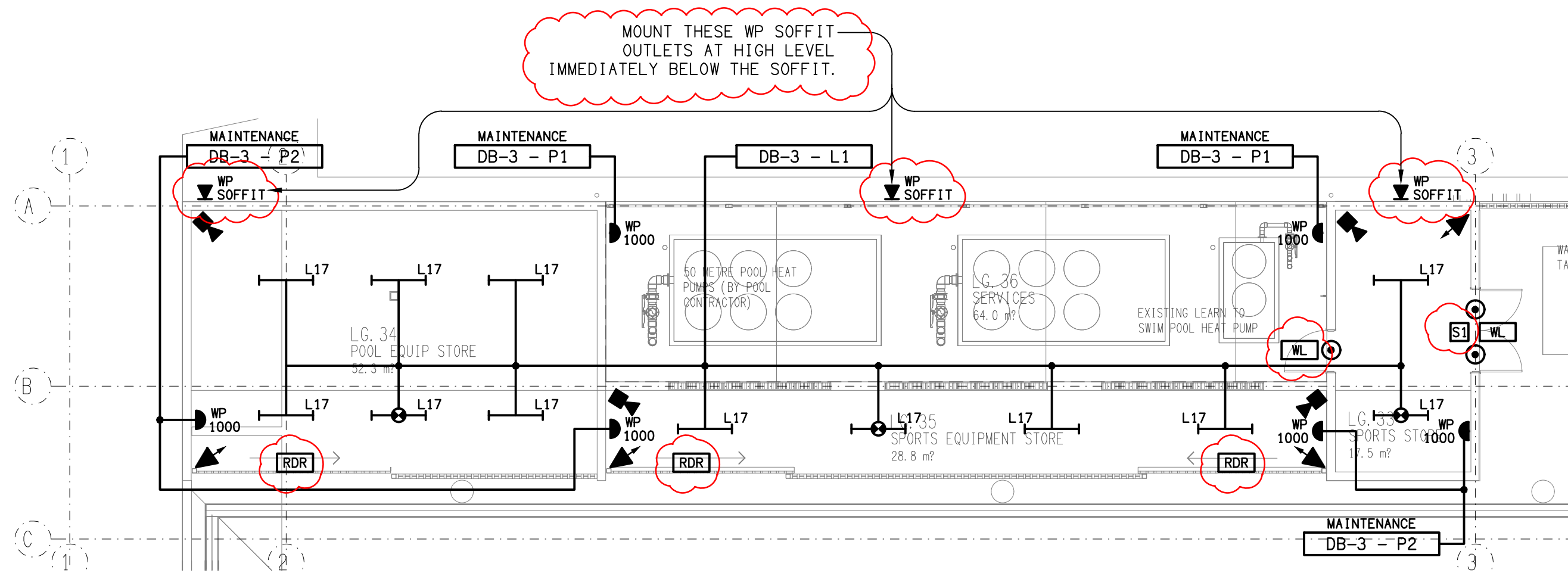
STAFF ROOMS
BASEMENT REFLECTED CEILING PLAN
SCALE 1: 100



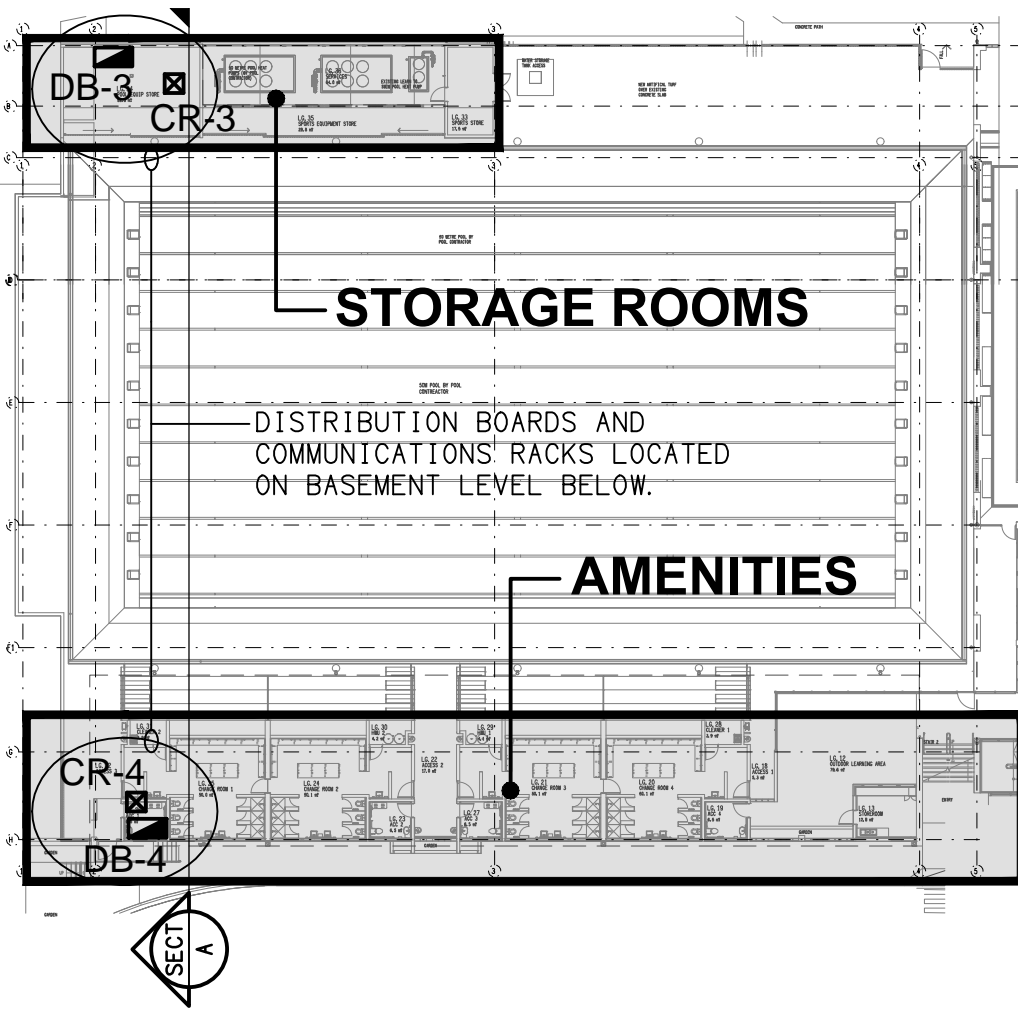
REFERENCE PLAN
BASEMENT LEVEL STAFF ROOMS
SCALE 1: 500



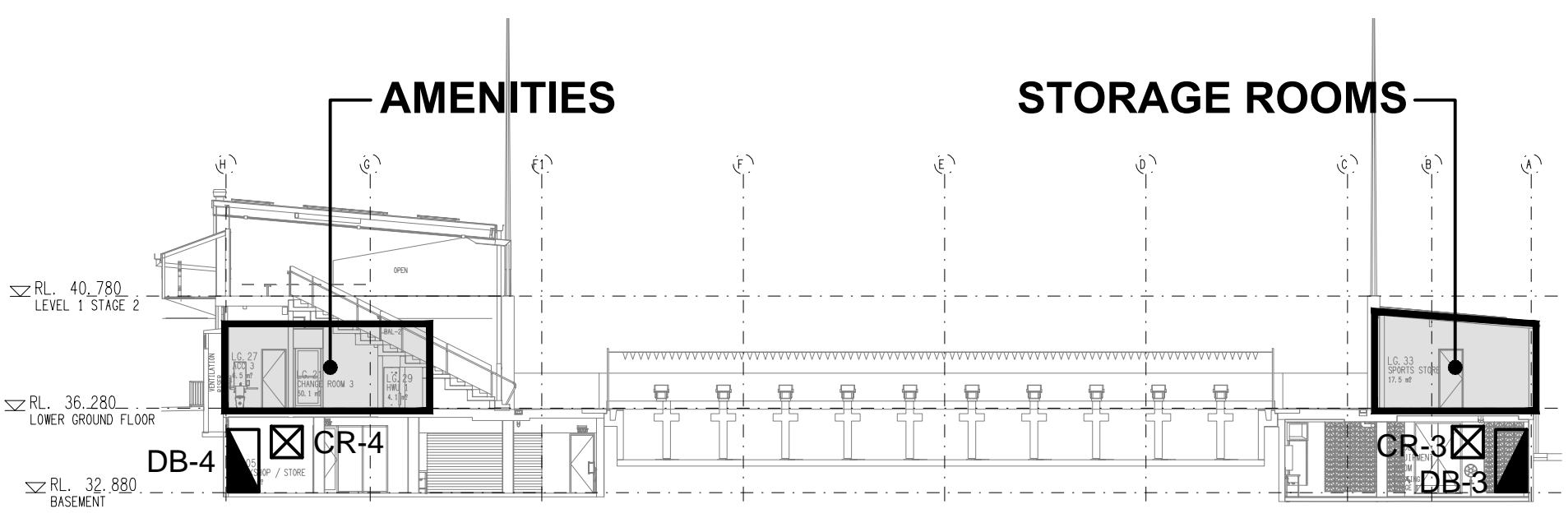
SECTION A
BASEMENT LEVEL STAFF ROOMS
SCALE 1: 500



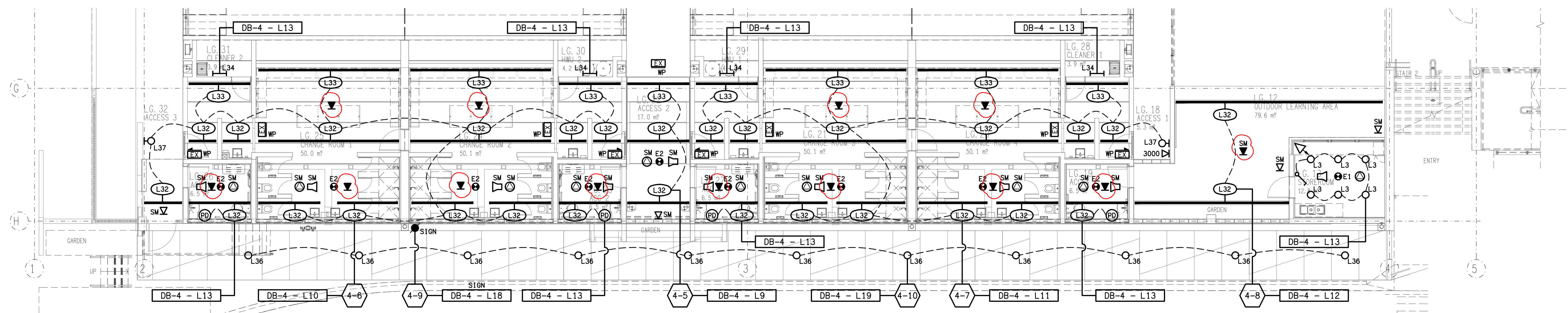
STORAGE ROOMS
LOWER GROUND PLAN
SCALE 1: 100



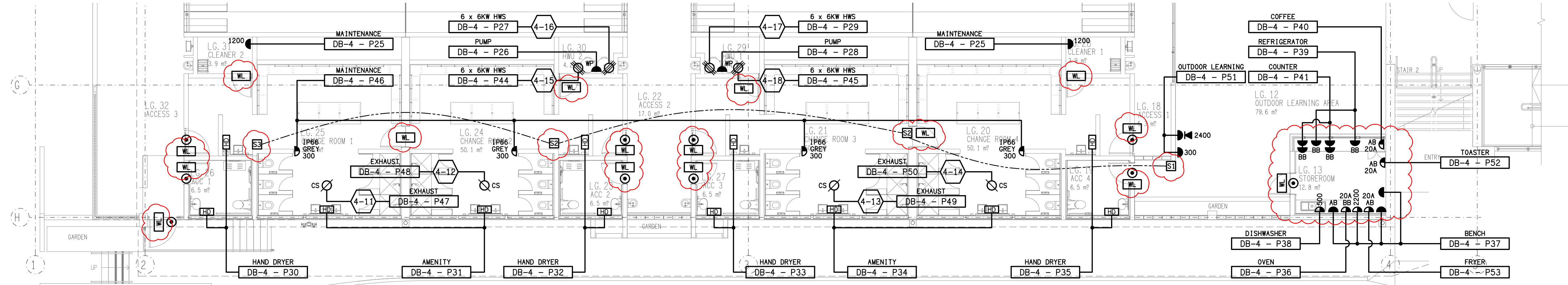
REFERENCE PLAN
LOWER GROUND STORAGE & AMENITIES
SCALE 1: 500



SECTION A
LOWER GROUND STORAGE & AMENITIES
SCALE 1: 250



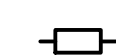
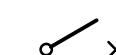






AMENITIES
LOWER GROUND REFLECTED CEILING PLAN
SCALE 1: 100


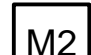

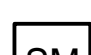
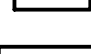


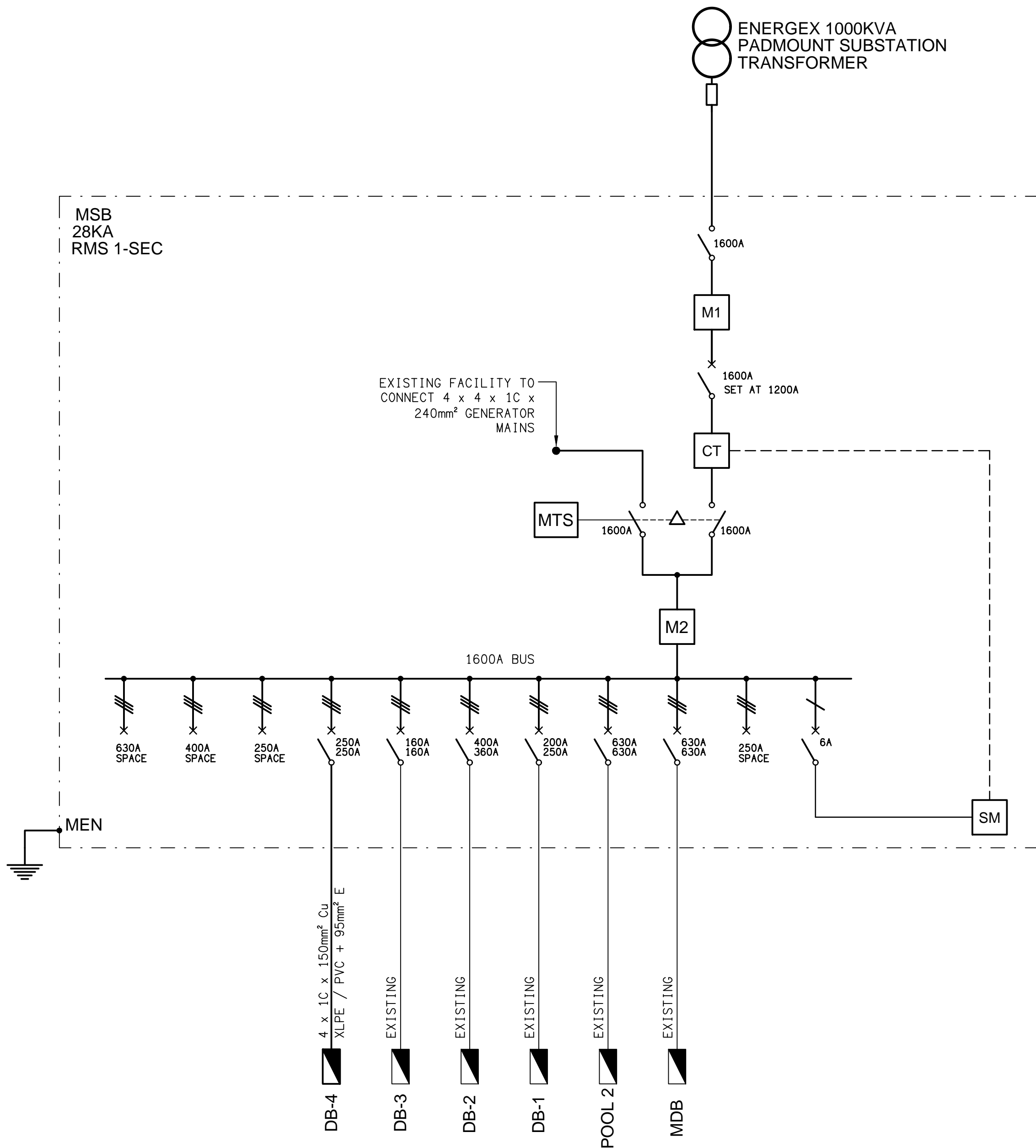
AMENITIES
LOWER GROUND FLOOR PLAN
SCALE 1: 100

MSB LEGEND

-  ELECTRICAL SWITCHBOARD.
-  ELECTRICAL CONTROL PANEL BY OTHERS.
-  FUSE.
-  CIRCUIT BREAKER.
-  LOAD BREAK NON-AUTO ISOLATOR.
-  CONTACTS.
-  SINGLE PHASE.
-  THREE PHASE.

MSB LEGEND

-  EXISTING RETAIL METER TO REMAIN AS IS .
-  EXISTING PRIVATE MULTI FUNCTION METER TO REMAIN AS IS.
-  EXISTING SOLAR NETWORK PROTECTION CTs TO REMAIN AS IS.
-  EXISTING SOLAR NETWORK PROTECTION SMART METER (WIRELESS) TO REMAIN AS IS .
-  EXISTING MANUAL TRANSFER SWITCH TO REMAIN AS IS.



ELECTRICAL DESIGN GROUP BRISBANE
PTY LTD
ACN 092 710 793

TRADING AS:
ELECTRICAL DESIGN GROUP

THE COPYRIGHT OF THIS DRAWING
REMAINS THE PROPERTY OF THE
ELECTRICAL DESIGN GROUP.

USE FIGURED DIMENSIONS
IN PREFERENCE TO SCALE.

ALL DIMENSIONS TO BE
VERIFIED ONSITE.

 **ELECTRICAL DESIGN GROUP**
ELECTRICAL BUILDING SERVICES CONSULTANTS
BRISBANE GOLD COAST

P.O.Box 15, Sherwood Q.4075
Phone: (07) 3278 4375
Email: brisbane@edg.net.au
Web: www.edg.net.au

PROJECT:
**ST JOHN'S ANGLICAN COLLEGE
FOREST LAKE
AQUATIC CENTRE STAGE 2**
COLLEGE AVENUE, FOREST LAKE

B	TENDER	01/12/2025
REV:	DESCRIPTION:	DATE:

DRAWING:
**ELECTRICAL SERVICES
MSB SCHEMATIC**

SCALE:
NOT TO SCALE AT A1

PROJECT NO:
C3230a

DRAWING NO:
E07

REVISION:
B