

# ELECTRICAL DESIGN GROUP

ELECTRICAL BUILDING SERVICES CONSULTANTS

P.O. Box 15, SHERWOOD Q. 4075

Phone: (07) 3278 4375 Fax: (07) 3716 0222

Web Site: www.edg.net.au Email: brisbane@edg.net.au

C2857a - KEEMA SPRINGWOOD - ADDITIONAL SHOWROOMS

C2857a-0001(K).xls

ELECTRICAL SERVICES CONTRACT DOCUMENT SCHEDULE

REVISION K - 18 JULY 2024

ISSUING INFORMATION				DATE OF ISSUE							
				DAY	18						
				MONTH	07						
				YEAR	24						
				REASON FOR ISSUE	C						
A = APPROVAL C = CONSTRUCTION N = COORDINATION P = PRELIMINARY T = TENDER											

DISTRIBUTION				NUMBER OF COPIES							
WWW.EDG.NET.AU				1E							
WIM ARCHITECTS				1E							
P = PRINT T = TRACING D = DISC E = EMAIL F = FAX											

DOCUMENTS		REVISION									
C2857a-E01.dwg	LEGEND & SITE PLAN	G	H								
C2857a-E02.dwg	BASEMENT LEVEL FLOOR PLAN	G	H								
C2857a-E03.dwg	BASEMENT LEVEL RCP	G									
C2857a-E04.dwg	GROUND LEVEL FLOOR PLAN	G	H								
C2857a-E05.dwg	GROUND LEVEL RCP	G									
C2857a-E06.dwg	ROOF AND ELEVATIONS	F									
C2857a-E07.dwg	NOTES	C	D								
C2857a-E08.dwg	SCHEMATICS & DETAILS	C	D								
C2857a-0001.xls	CONTRACT DOCUMENT SCHEDULE	J	K								
C2857a-0002.xls	EQUIPMENT SCHEDULE	E	F								
C2857a-0004.xls	DISTRIBUTION BOARD DB-A SCHEDULE	F	G								
C2857a-0001.zip	FITTING & OUTLET DATASHEETS	B	C								



# ELECTRICAL DESIGN GROUP

ELECTRICAL BUILDING SERVICES CONSULTANTS

P.O. Box 15, SHERWOOD Q. 4075

Phone: (07) 3278 4375 Fax: (07) 3716 0222

Web Site: [www.edg.net.au](http://www.edg.net.au) Email: [brisbane@edg.net.au](mailto:brisbane@edg.net.au)

C2857a - KEEMA SPRINGWOOD - ADDITIONAL SHOWROOMS

C2857a-0002(F).xls

## ELECTRICAL EQUIPMENT SCHEDULE

REVISION F - 18 JULY 2024

THE EQUIPMENT SUPPLIER CONTACT DETAILS MAY BE AVAILABLE ON THE EDG WEBSITE VIA THE FOLLOWING LINK <a href="http://www.edg.net.au/links.html">www.edg.net.au/links.html</a>					
TYPE	LAMPS	DESCRIPTION	COLOUR / ACCESSORY	CATALOGUE No	REV
L1	36W LED 4000K	1200 LONG SURFACE MOUNTED IP65 DIFFUSED BATTEN C/W INTEGRAL ELECTRONIC CONTROL GEAR AND PRESENCE DETECTION SENSOR	LIGHT GREY	GAMMA ILLUMINATION STORM 1558-CCT-36W-MS	A
L2	A SINGLE HORIZONTAL RUN UNDER THE OVERHEAD CUPBOARDS HARD AGAINST THE SPLASHBACK LED STRIP LIGHT 4000K WHITE LEDS AT 12MM SPACING WITH REMOTE CONTROL GEAR. THE SUPPLIER IS TO CUT / JOIN THE LED STRIPS TO SUIT THE SITE DIMENSIONS. DO NOT CUT THE LED STRIPS ON SITE SCREW FIX THE ALUMINIUM SUPPORT IN PLACE.			NEON PRODUCTS AUSTRALIA LF-DFB-NW-300-12 + PR-LIN172153-F	A
L3	40W 4000K LED	1200 X 300 LAY IN FLAT PLATE LED FITTING C/W REMOTE DRIVER MOUNTED IN A FLUSH RECESSED PLASTER BOARD KIT	WHITE TRIM	GAMMA ILLUMINATION PHANTOM 884501	A
L4	13W 4000K LED	RECESSED 62 DEG BEAM DOWNLIGHT C/W REMOTE DRIVER	WHITE TRIM	GAMMA ILLUMINATION COBALT 1401-4K-13W	A
L5	13W 3000K LED	RECESSED 40 DEG BEAM DARK LIGHT DOWNLIGHT C/W REMOTE DRIVER	WHITE TRIM	GAMMA ILLUMINATION RHO1001-3K-13W	A
L6	22W 3000K LED	RECESSED ADJUSTABLE 55 DEG BEAM DOWNLIGHT C/W REMOTE DRIVER	WHITE TRIM	GAMMA ILLUMINATION CORBEL 1411-3K-22W	A
L7	2 X 28W 4000K LED	RECESSED ADJUSTABLE TWIN HEAD 47 DEG BEAMS RECTANGULAR DOWNLIGHT C/W REMOTE DRIVER	SILVER	GAMMA ILLUMINATION LEPEX2 1080-2L-WFL-4K-28W	A
L8	60W 4000K LED	RECESSED ADJUSTABLE 55 DEG DOWNLIGHT C/W REMOTE DRIVER	WHITE	GAMMA ILLUMINATION MERCURY 1289-VWFL-4K-60W	A
L9	45W 4000K LED	SEMI RECESSED 35 DEG CAB DOWNLIGHT C/W REMOTE DRIVER	WHITE	GAMMA ILLUMINATION COBALT SR 1446-4K-45W	A
L10	60W 4000K LED	RECESSED 55 DEG DOWNLIGHT C/W REMOTE DRIVER	WHITE	GAMMA ILLUMINATION CENTRIX 1209-VWFL-4K-60W	A
L11	28W 4000K LED	MALL MOUNTED IP65 BUNKER C/W INTEGRAL DRIVER	BLACK	GAMMA ILLUMINATION 1338-4K-28W	A
L12	8W 3000K LED	AMENITY RECESSED DOWNLIGHT C/W REMOTE DALI DRIVER	WHITE	GAMMA ILLUMINATION MYLO 1004-WFL-3K-13W	A



# ELECTRICAL DESIGN GROUP

ELECTRICAL BUILDING SERVICES CONSULTANTS

P.O. Box 15, SHERWOOD Q. 4075

Phone: (07) 3278 4375 Fax: (07) 3716 0222

Web Site: [www.edg.net.au](http://www.edg.net.au) Email: [brisbane@edg.net.au](mailto:brisbane@edg.net.au)

C2857a - KEEMA SPRINGWOOD - ADDITIONAL SHOWROOMS

C2857a-0002(F).xls

## ELECTRICAL EQUIPMENT SCHEDULE

REVISION F - 18 JULY 2024

THE EQUIPMENT SUPPLIER CONTACT DETAILS MAY BE AVAILABLE ON THE EDG WEBSITE VIA THE FOLLOWING LINK <a href="http://www.edg.net.au/links.html">www.edg.net.au/links.html</a>					
TYPE	LAMPS	DESCRIPTION	COLOUR / ACCESSORY	CATALOGUE No	REV
L13	52W 4000K LED	SURFACE MOUNTED 116 DEG BUNKER C/W INTEGRAL DRIVER	BLACK	GAMMA ILLUMINATION VIPER 1390-4K-52W	A
L14	45W LED 4000K	1200 LONG IP65 DIFFUSED BATTEN C/W INTEGRAL ELECTRONIC CONTROL GEAR AND A NON MAINTAINED AS2293 EMERGENCY PACK SUSPENDED / SURFACE MOUNTED AS REQUIRED. THE L14 FITTINGS ARE NOT SWITCHED AND ARE TO ONLY OPERATE UPON POWER SUPPLY FAILURE IN ACCORDANCE WITH AS2293	NA	GAMMA ILLUMINATION STORM 1311-4K	B
L15	13W 4000K LED	RECESSED 62 DEG BEAM DOWNLIGHT C/W REMOTE DRIVER	WHITE TRIM	GAMMA ILLUMINATION COBALT 1401-4K-13W	A
L16	3 X 13W 4000K LED	RECESSED ADJUSTABLE THREE HEAD 36 DEG BEAMS RECTANGULAR DOWNLIGHT C/W REMOTE DRIVER	SILVER	GAMMA ILLUMINATION RIGA 1057-3L-FL-4K-13W	A
L17	90W 4000K LED	WALL MOUNTED ADJUSTABLE FLOOD LIGHT C/W INTEGRAL DRIVER	SILVER	GAMMA ILLUMINATION ALTUS 1345-4K-90W	A
L18	20W LED 4000K	600 LONG WEATHERPROOF LED BATTEN C/W INTERNAL ELECTRONIC CONTROL GEAR AND A MOVEMENT SENSOR SWITCH	LIGHT GREY	GAMMA STORM 1557-CCT-20W-MS	A
L19	A SINGLE HORIZONTAL RUN OF 4000K WHITE LEDS AT 12MM SPACING SURFACE MOUNTED CENTRED BETWEEN THE CEILING BATTENS WITH REMOTE CONTROL GEAR. THE SUPPLIER IS TO CUT / JOIN THE LED STRIPS TO SUIT THE SITE DIMENSIONS. DO NOT CUT THE LED STRIPS ON SITE SCREW FIX THE ALUMINIUM SUPPORT IN PLACE.			NEON PRODUCTS AUSTRALIA LF-DFB-NW-300-12 + PR-LIN172153-F	E
E1	LED	EMERGENCY LIGHT: RECESSED NON-MAINTAINED EMERGENCY LIGHT. AS2293 CLASSIFICATION C0-D63 - C90-D63.	WHITE	CLEVERTRONICS LLIFE	A
EX BOH	LED	BACK OF HOUSE EXIT LIGHT: MAINTAINED 24M VIEWING DISTANCE EXIT LIGHT C/W DIFFUSERS & DIRECTIONAL ARROWS AS SHOWN. CEILING OR WALL MOUNT BETWEEN 2100mm & 2700mm AFFL IF THERE IS NO VERTICAL SURFACE TO MOUNT THE FITTING ON WITHIN THIS RANGE CONFIRM THE MOUNTING HEIGHT WITH THE ENGINEER. AS2293 CLASSIFICATION C0-D1.25- C90-D2	WHITE	CLEVERTRONICS LCFLED	A



# ELECTRICAL DESIGN GROUP

ELECTRICAL BUILDING SERVICES CONSULTANTS

P.O. Box 15, SHERWOOD Q. 4075

Phone: (07) 3278 4375 Fax: (07) 3716 0222

Web Site: [www.edg.net.au](http://www.edg.net.au) Email: [brisbane@edg.net.au](mailto:brisbane@edg.net.au)

C2857a - KEEMA SPRINGWOOD - ADDITIONAL SHOWROOMS

C2857a-0002(F).xls

## ELECTRICAL EQUIPMENT SCHEDULE

REVISION F - 18 JULY 2024

THE EQUIPMENT SUPPLIER CONTACT DETAILS MAY BE AVAILABLE ON THE EDG WEBSITE VIA THE FOLLOWING LINK <a href="http://www.edg.net.au/links.html">www.edg.net.au/links.html</a>					
TYPE	LAMPS	DESCRIPTION	COLOUR / ACCESSORY	CATALOGUE No	REV
EX FOH	LED	FRONT OF HOUSE EXIT LIGHT: MAINTAINED 24M VIEWING DISTANCE EXIT LIGHT C/W DIFFUSERS & DIRECTIONAL ARROWS AS SHOWN. CEILING SURFACE MOUNT OR WALL MOUNT BETWEEN 2100mm & 2700mm AFFL IF THERE IS NO VERTICAL SURFACE TO MOUNT THE FITTING ON WITHIN THIS RANGE CONFIRM THE MOUNTING HEIGHT WITH THE ENGINEER. AS2293 CLASSIFICATION C0-D1.25- C90-D2	WHITE	CLEVERTRONICS LUBPRO-SM	A
EMERGENCY PACK		LIGHT FITTINGS THAT ARE DESIGNATED AS BEING PROVIDED WITH AN EMERGENCY PACK ARE TO BE PROVIDED WITH AN INTEGRAL AS2293 EMERGENCY PACK. THE FITTINGS ARE TO BE NON MAINTAINED WITH ALL LAMPS SWITCHED AS PER THE LIGHTING CONTROL FOR THAT SPACE UNLESS NOTED OTHERWISE. REFER TO THE SPECIFICATION FOR FURTHER DETAILS OF THE CONFIGURATION AND SWITCHING OF EMERGENCY LIGHTS.			A
TWO-WAY LIGHT SWITCH		TWO-WAY LIGHT SWITCH C/W CIRCUIT IDENTIFICATION ON THE FACEPLATE BEHIND THE SURROUND MOUNTED AT 1100mm AFFL UNLESS NOTED OTHERWISE.	WHITE	CLIPSAL C2000 SERIES 30USM	F
PROXIMITY DETECTOR SWITCH (PD)		ADJUSTABLE FLUSH RECESSED 360 DEGREE TRIPLE PYRO PIR PRESENCE DETECTOR TO OPERATE THE ASSOCIATED LIGHTS FOR A PRE-SET AMOUNT OF TIME. ADJUST THE TIME AND SENSITIVITY ON SITE AS DIRECTED BY THE ENGINEER.	WHITE	CLIPSAL SELECTION BY THE CONTRACTOR. SUBMIT DETAILS OF THE PROXIMITY DETECTOR SWITCH FOR APPROVAL PRIOR TO ORDERING	A
SWITCH PANEL x (SPx)		CONTROL SWITCH PANEL TO BE PROVIDED AS PER THE CONTROL SCHEMATIC AND SWITCH PANEL DETAIL	WHITE	CLIPSAL C2000 SERIES 30USM	A
SINGLE POWER OUTLET		SINGLE POWER OUTLET C/W CIRCUIT IDENTIFICATION ON THE FACEPLATE BEHIND THE SURROUND MOUNT AT 300 AFFL U.N.O.	WHITE	CLIPSAL C2000 SERIES	A
DOUBLE POWER OUTLET		DOUBLE POWER OUTLET C/W CIRCUIT IDENTIFICATION ON THE FACEPLATE BEHIND THE SURROUND MOUNT AT 300 AFFL U.N.O	WHITE	CLIPSAL C2000 SERIES	A
WEATHERPROOF POWER OUTLET (WP)		IP54 WEATHERPROOF SINGLE / DOUBLE POWER OUTLET AS NOTED ON DRAWING C/W COVER FLAP OVER SOCKET. MOUNT AT MINIMUM 1100mm AFFL U.N.O. RATING 10A U.N.O.	-	CLIPSAL WSCF227F	A
HAND DRYER CONNECTION (HD)		SINGLE POWER OUTLET C/W CIRCUIT IDENTIFICATION ON THE FACEPLATE BEHIND THE SURROUND FOR THE HAND DRYER MOUNT THE GPO AS PER THE HD DETAIL	WHITE UNLESS NOTED AS BLACK (BK)	CLIPSAL C2000 SERIES	A



# ELECTRICAL DESIGN GROUP

ELECTRICAL BUILDING SERVICES CONSULTANTS

P.O. Box 15, SHERWOOD Q. 4075

Phone: (07) 3278 4375 Fax: (07) 3716 0222

Web Site: [www.edg.net.au](http://www.edg.net.au) Email: [brisbane@edg.net.au](mailto:brisbane@edg.net.au)

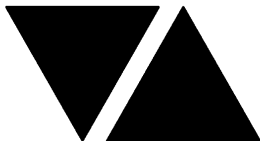
C2857a - KEEMA SPRINGWOOD - ADDITIONAL SHOWROOMS

C2857a-0002(F).xls

## ELECTRICAL EQUIPMENT SCHEDULE

REVISION F - 18 JULY 2024

THE EQUIPMENT SUPPLIER CONTACT DETAILS MAY BE AVAILABLE ON THE EDG WEBSITE VIA THE FOLLOWING LINK <a href="http://www.edg.net.au/links.html">www.edg.net.au/links.html</a>					
TYPE	LAMPS	DESCRIPTION	COLOUR / ACCESSORY	CATALOGUE No	REV
SIGN CONNECTION		COORDINATE THE LOCATION AND CONNECTION WITH THE SIGN CONTRACTOR ENSURING THE GPO / ISOLATORS ARE PROVIDED WITH APPROPRIATE WEATHER PROTECTION AND ARE CONCEALED FROM VIEW.			A
SINGLE-PHASE ISOLATOR		SINGLE-PHASE WEATHERPROOF ISOLATOR. MOUNT AT 1350mm AFFL U.N.O. RATING 20A U.N.O. CONNECT TO EQUIPMENT VIA FLEXIBLE CONDUIT.	-	CLIPSAL WHT20	A
THREE-PHASE ISOLATOR		THREE-PHASE WEATHERPROOF ISOLATOR. MOUNT AT 1350mm AFFL U.N.O. RATING 20A U.N.O. CONNECT TO EQUIPMENT VIA FLEXIBLE CONDUIT. "RSD" DENOTES ROLLER SHUTTER DOOR SUPPLY - COORDINATE LOCATION ONSITE WITH MOTOR.	-	CLIPSAL WHT35	A
FLOOR BOX TYPE 1 (FB1)		INSITU FLUSH FLOOR BOX C/W A DOUBLE GPOS+ 2 COMMUNICATIONS OUTLETS ON THE SAME FACEPLATE . PROVIDE A 32 DIA CONDUIT C/W A SPARE DRAW WIRE FROM THE REAR OF THE COMMUNICATIONS FACEPLATE TO THE CEILING SPACE ABOVE THE COMMUNICATIONS RACK CR-A. PROVIDE THE GPOS AND COMMUNICATIONS OUTLETS AS PER THE STANDARD DESCRIPTIONS.	STAINLESS STEEL	ECD FB2SHD	D
FLOOR BOX TYPE 2 (FB2)		SURFACE MOUNTED FLOOR BOX C/W A DOUBLE GPOS+ 2 COMMUNICATIONS OUTLETS ON THE SAME FACEPLATE . PROVIDE A 32 DIA CONDUIT C/W A SPARE DRAW WIRE FROM THE REAR OF THE COMMUNICATIONS FACEPLATE TO THE CEILING SPACE ABOVE THE COMMUNICATIONS RACK CR-A. PROVIDE THE GPOS AND COMMUNICATIONS OUTLETS AS PER THE STANDARD DESCRIPTIONS.	STAINLESS STEEL	ECD AFB20	D
ELECTRIC VEHICLE CHARGER (EVC)		7KW ELECTRIC VEHICLE CHARGER C/W 4G REMOTE BILLING INTEGRAL TYPE 2 CABLE AND STAINLESS STEEL MOUNTING BOLLARD AS REQUIRED.	NA	EVSE OCULAR IQ COMMERCIAL 7KW	A
CAT 6 COMMUNICATIONS OUTLET		RJ45 CAT-6 COMMUNICATIONS OUTLET, CABLED BACK TO THE COMMUNICATIONS RACK CR-A TERMINATED ONTO FACILITY PATCH PANELS VIA 4-PAIR CAT-6 UTP CABLE. MOUNT UP TO 3 RJ45 OUTLETS PER MULTI-GANG FACEPLATE WITH SEPARATE PERMANENT LABELLING FOR EACH OUTLET.	WHITE	CLIPSAL C2000 SERIES KRONE JACK C/W SHUTTER	A
MATV OUTLET		MATV OUTLET CABLED TO THE EXISTING BUILDINGS TB ANTENNA SYSTEM VIA RG 6 CABLE. UPGRADE THE EXISTING TV ANTENNA SYSTEM AS NECESSARY. MOUNT THE MATV OUTLET ADJACENT THE ASSOCIATED TV POWER OUTLET.	WHITE	CLIPSAL C2000 SERIES KRONE JACK C/W SHUTTER	F
DB-A		WALL MOUNTED DISTRIBUTION BOARD DB-A REFER TO THE SCHEMATIC, SPECIFICATION AND DISTRIBUTION BOARD DB-A SCHEDULE FOR ADDITIONAL INFORMATION AND REQUIREMENTS. PROVIDE A SHOP DRAWING OF THE DB FOR APPROVAL. CONNECT THE NEW DB-A SUBMAIN TO THE NEW MCCB PROVIDED AS PART OF THE MSB UPGRADE.			A



# ELECTRICAL DESIGN GROUP

ELECTRICAL BUILDING SERVICES CONSULTANTS

P.O. Box 15, SHERWOOD Q. 4075

Phone: (07) 3278 4375 Fax: (07) 3716 0222

Web Site: [www.edg.net.au](http://www.edg.net.au) Email: [brisbane@edg.net.au](mailto:brisbane@edg.net.au)

C2857a - KEEMA SPRINGWOOD - ADDITIONAL SHOWROOMS

C2857a-0002(F).xls

## ELECTRICAL EQUIPMENT SCHEDULE

REVISION F - 18 JULY 2024

THE EQUIPMENT SUPPLIER CONTACT DETAILS MAY BE AVAILABLE ON THE EDG WEBSITE VIA THE FOLLOWING LINK <a href="http://www.edg.net.au/links.html">www.edg.net.au/links.html</a>					
TYPE	LAMPS	DESCRIPTION	COLOUR / ACCESSORY	CATALOGUE No	REV
MSSB		MECHANICAL SERVICES SWITCHBOARD PROVIDED BY THE MECHANICAL SUB CONTRACTOR. COORDINATE THE SUBMAIN CONNECTION WITH THE MECHANICAL SUB CONTRACTOR ON SITE. PROVIDE A SUBMAIN FROM THE NEW MCCB PROVIDED AS PART OF THE MSB UPGRADE TO THE MSSB.			A
DB-M		EXISTING DISTRIBUTION BOARD INTEGRAL TO THE MSB TO REMAIN AS IS			A
MSB		UPGRADE THE EXISTING MSB IN ACCORDANCE WITH AS1136 AS PER THE MSB ELEVATIONS AND SCHEMATICS. PROVIDE THE MSB WITH A DEMAND MONITORING SYSTEM THAT ISOLATES THE SUPPLY TO THE EV CHARGER HOT WATER SYSTEMS AND THE MSSB SHOULD THE DEMAND REACH 200 AMPS ON ANY PHASE. THE SUPPLY TO THE EV CHARGER, HOT WATER SYSTEMS AND MSSB MUST BE MANUALLY RESET. SUBMIT DETAILS OF THE PROPOSED DEMAND MONITORING SYSTEM FOR APPROVAL. UPGRADE THE METERING TO ACCOMMODATE THE PV INSTALLATION.			A
COMMUNICATIONS RACK CR-E		EXISTING COMMUNICATIONS RACK TO BE UPGRADED AS REQUIRED TO ACCOMMODATE THE NEW OPTICAL FIBRE SERVICE			A
COMMUNICATIONS RACK CR-A		PROVIDE CR-A AS A 600 DEEP WALL MOUNTED HINGED 19 INCH 18RU COMMUNICATIONS RACK REPLACING THE EXISTING RACK. PROVIDE THE RACK WITH A FIBER OPTIC AND PATCH PANELS TO TERMINATE THE OPTICAL FIBRE CABLE AND ALL OF THE EXISTING AND FACILITY COMMUNICATIONS OUTLET CABLES. PROVIDE DETAILS OF THE RACK FOR APPROVAL PRIOR TO ORDERING.			A
SECURITY EQUIPMENT		SECURITY EQUIPMENT BY SPECIALIST SECURITY CONTRACTOR			A
PV INVERTER		PROVIDE THE PV1 INVERTER AS 30KW WALL MOUNTED IP 66 3 PHASE C/W 5 YEAR REPLACEMENT WARRANTY EACH CONNECTED TO THE PV PANELS. SUBMIT DETAILS OF THE PV SYSTEM CONFIGURATION / CABLING FOR APPROVAL.	NA	SMA SUNNY STP 25000TL-30	A
PV PANELS		PROVIDE 33KW OF PV PANELS MOUNTED ON THE ROOF. PROVIDE THE PV PANELS WITH A 10 YEAR PRODUCT WARRANTY AND A 25 YEAR PANEL PERFORMANCE WARRANTY. SUBMIT DETAILS OF THE PANEL ARRANGEMENT FOR APPROVAL.	NA	EQUAL TO Q CELLS Q PEAK	A



# ELECTRICAL DESIGN GROUP

ELECTRICAL BUILDING SERVICES CONSULTANTS

P.O. Box 15, SHERWOOD Q. 4075

Phone: (07) 3278 4375 Fax: (07) 3716 0222

Web Site: www.edg.net.au Email: brisbane@edg.net.au

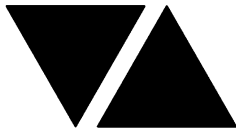
## C2857a - KEEMA SPRINGWOOD - ADDITIONAL SHOWROOMS

C2857a-0004(G).xls

### DISTRIBUTION BOARD DB-A

REVISION G - 18 JULY 2024

							REV
FAULT CURRENT:		6KA		MAIN SWITCH:		160A NON AUTO LOAD BREAK SWITCH	A
CHASSIS SIZE:		3 X 60 POLES		SUPPLIED FROM:		MSB	A
CHASSIS RATING:		250A		SUPPLY CABLE:		4C 35	A
PHASES:		3					A
PROVIDE THE DB WITH A FULL WIDTH EMPTY DIN RAIL TO ACCOMMODATE FUTURE CONTACTORS AND CONTROLS IN ADDITION TO THE INITIAL CONTROLS . PROVIDE THE DB WITH AN AS2293 EMERGENCY LIGHTING CONTROL SYSTEM TO CONTROL THE ASSOCIATED EMERGENCY LIGHTS. PROVIDE THE DB WITH SURGE PROTECTION							A
CIRC	PH	CIRCUIT BREAKER (amps)	CONTROL EQUIPMENT	CABLE SIZE ( mm2 )	LOCATION	CIRCUIT USE	
P1	1	20	RCBO	2.5	ROOF	GPOs	A
P2	1	20	RCBO	2.5	RECEPTION	FLOOR BOXES	E
P3	1	20	RCBO	2.5	GROUND STAFF	AUTO BOILER	A
P4	1	20	RCBO	2.5	GROUND STAFF	REF	A
P5	1	20	RCBO	2.5	GROUND STAFF	GPOs	A
P6	1	20	RCBO	2.5	GROUND	PWD HD	A
P7	1	20	RCBO	2.5	GROUND	M / F HD	A
P8	1	20	RCBO	2.5	GROUND	AMENITY GPOs	A
P9	1	20	RCBO	2.5	GROUND	OFFICE GPOs	A
P10	1	20	RCBO	2.5	GROUND	STAFF LOUNGE GPOs	A
P11	1	20	RCBO	2.5	GROUND	OFFICE GPOs	A
P12	1	20	RCBO	2.5	GROUND	RAM GPOs	A
P13	1	20	RCBO	2.5	GROUND	RAM GPOs	A
P14	1	20	RCBO	2.5	GROUND	RAM GPOs	A
P15	1	20	RCBO	2.5	GROUND	AUTO DOOR	A
P16	1	32	RCBO	2.5	GROUND	EV CHARGER	A
P17	1	20	RCBO	2.5	GROUND	LDV GPOs	A
P18	1	20	RCBO	2.5	GROUND	LDV GPOs	A
P19	1	20	RCBO	2.5	GROUND	LDV GPOs	A
P20	1	20	RCBO	2.5	GROUND	LOUNGE KIT GPOs	A
P21	1	20	RCBO	2.5	GROUND	LOUNGE KIT REF	A
P22	3	20	RCBO	2.5	BASEMENT	HWS	F
P23	1	20	RCBO	2.5	GROUND	LOUNGE KIT AUTOBOILER	A
P24	1	20	RCBO	2.5	GROUND	SHOW RM KIT GPOs	A
P25	1	20	RCBO	2.5	GROUND	SHOW RM KIT REF	A
P26	1	20	RCBO	2.5	GROUND	RECEPTION	F
P27	1	20	RCBO	2.5	GROUND	SHOW RM KIT AUTOBOILER	A
P28	3	50		16.0	BASEMENT	PV INVERTER	A
P29							E
P30	1	20	RCBO	2.5	BASEMENT	AMENITY GPOs	A
P31	1	20	RCBO	2.5	BASEMENT	OFFICE GPOs	A
P32	3	32	RCBO	6.0	BASEMENT	PARTS STORE	G
P33	1	20	RCBO	2.5	BASEMENT	TINTING GPOS	A
P34	1	20	RCBO	2.5	BASEMENT	WORKSHOP GPOs	A
P35	3	20	RCBO	2.5	BASEMENT	RSD	A
P36	1	20	RCBO	2.5	BASEMENT	HANDOVER GPOs	A
P37	1	20	RCBO	2.5	GROUND	EXTERNAL	G
P38	1	20	RCBO	2.5	BASEMENT	20A WORKSHOP GPO	A
P39	1	20	RCBO	2.5	BASEMENT	WORKSHOP GPOs	A
P40	1	20	RCBO	2.5	BASEMENT	20A WORKSHOP GPO	A
P41	3	20	RCBO	2.5	BASEMENT	32A OUTLET	A
P42	3	20	RCBO	2.5	BASEMENT	HOIST	A
P43	3	20	RCBO	2.5	BASEMENT	HOIST	A
P44	1	20	RCBO	2.5	BASEMENT	20A WORKSHOP GPO	A
P45	3	20	RCBO	2.5	BASEMENT	32A OUTLET	A
P46	1	20	RCBO	2.5	BASEMENT	WORKSHOP GPOs	A
P47	1	20	RCBO	2.5	BASEMENT	M / F HD	D
P48	1	20	RCBO	2.5	BASEMENT	AUTO BOILER	F
P49	1	20	RCBO	2.5	BASEMENT	APPLIANCES	F
P50	1	20	RCBO	2.5	BASEMENT	REF	F



# ELECTRICAL DESIGN GROUP

ELECTRICAL BUILDING SERVICES CONSULTANTS

P.O. Box 15, SHERWOOD Q. 4075

Phone: (07) 3278 4375 Fax: (07) 3716 0222

Web Site: www.edg.net.au Email: brisbane@edg.net.au

C2857a - KEEMA SPRINGWOOD - ADDITIONAL SHOWROOMS

C2857a-0004(G).xls

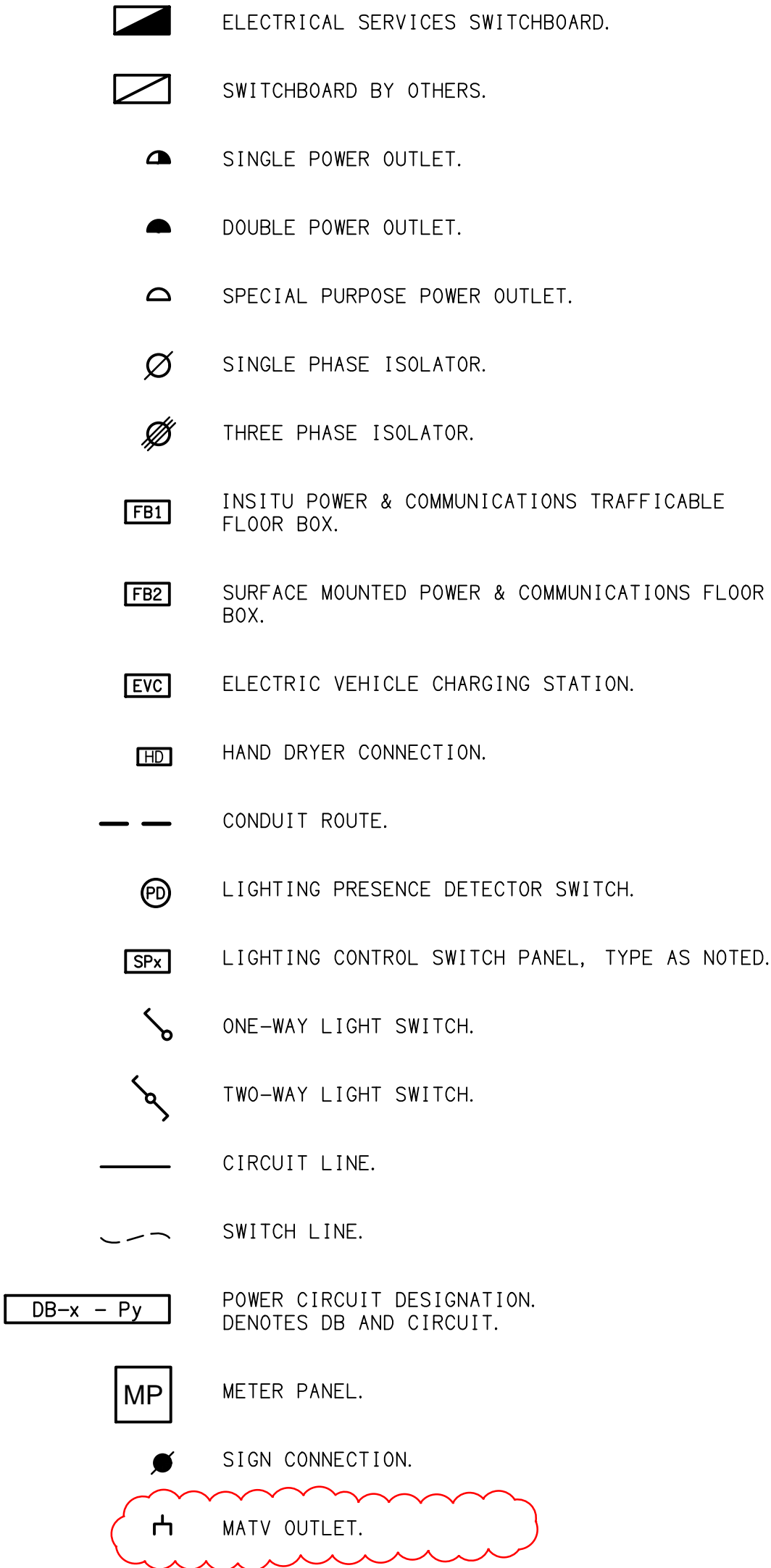
DISTRIBUTION BOARD DB-A

REVISION G - 18 JULY 2024

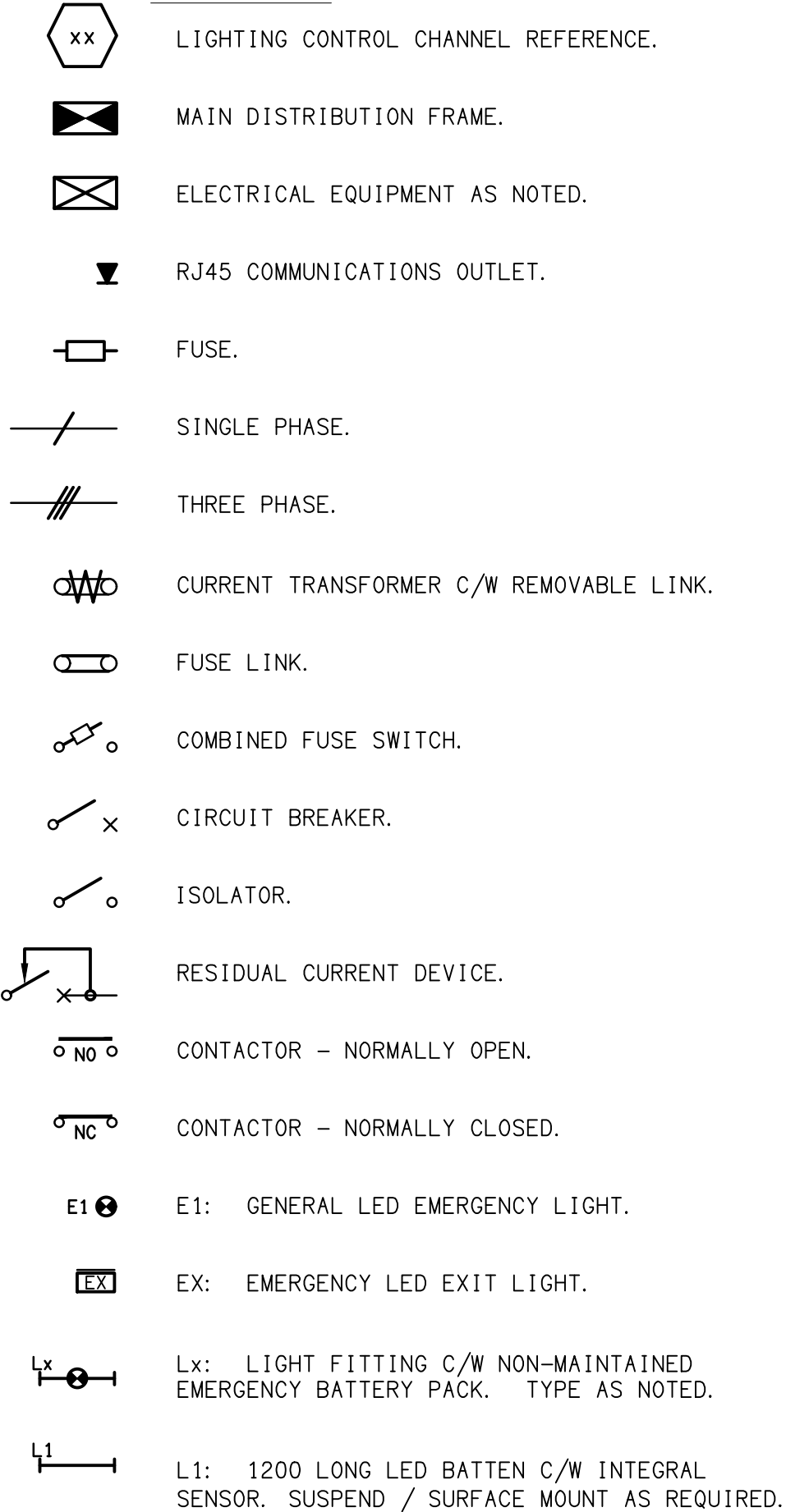
							REV
FAULT CURRENT: 6KA							A
MAIN SWITCH: 160A NON AUTO LOAD BREAK SWITCH							A
CHASSIS SIZE: 3 X 60 POLES							A
SUPPLIED FROM: MSB							A
CHASSIS RATING: 250A							A
SUPPLY CABLE: 4C 35							A
PHASES: 3							A
PROVIDE THE DB WITH A FULL WIDTH EMPTY DIN RAIL TO ACCOMMODATE FUTURE CONTACTORS AND CONTROLS IN ADDITION TO THE INITIAL CONTROLS. PROVIDE THE DB WITH AN AS2293 EMERGENCY LIGHTING CONTROL SYSTEM TO CONTROL THE ASSOCIATED EMERGENCY LIGHTS. PROVIDE THE DB WITH SURGE PROTECTION							A
CIRC	PH	CIRCUIT BREAKER (amps)	CONTROL EQUIPMENT	CABLE SIZE ( mm2 )	LOCATION	CIRCUIT USE	
L1	1	20	RCBO	2.5	GROUND	LOUNGE	F
L2	1	20	RCBO	2.5	GROUND	NIGHT LIGHTS	A
L3	1	20	RCBO	2.5	GROUND	LIGHTS	A
L4	1	20	RCBO	2.5	GROUND	LIGHTS	A
L5	1	20	RCBO	2.5	GROUND	LIGHTS	A
L6	1	20	RCBO	2.5	GROUND	SIGNS	F
L7	1	20	RCBO	2.5	GROUND	LIGHTS	A
L8	1	20	RCBO	2.5	GROUND	LIGHTS	A
L9	1	20	RCBO	2.5	GROUND AMENITY	LIGHTS	A
L10							F
L11	1	20	RCBO	2.5	GROUND OFFICE	LIGHTS	A
L12	1	20	RCBO PE CELL ON DUSK OFF DAWN	2.5	EXTERNAL	LIGHTS	A
L13	1	20	RCBO PE CELL ON DUSK TC OFF	2.5	EXTERNAL	SIGNS	G
L14	1	20	RCBO PE CELL ON DUSK TC OFF	2.5	EXTERNAL	SIGNS	G
L15	1	20	RCBO	2.5	BASEMENT	LIGHTS	A
L16	1	20	RCBO	2.5	BASEMENT	LIGHTS	A
L17	1	20	RCBO	2.5	BASEMENT	LIGHTS	A
L18	1	20	RCBO	2.5	BASEMENT	LIGHTS	B
L19	1	20	RCBO	2.5	GROUND	LIGHTS	F



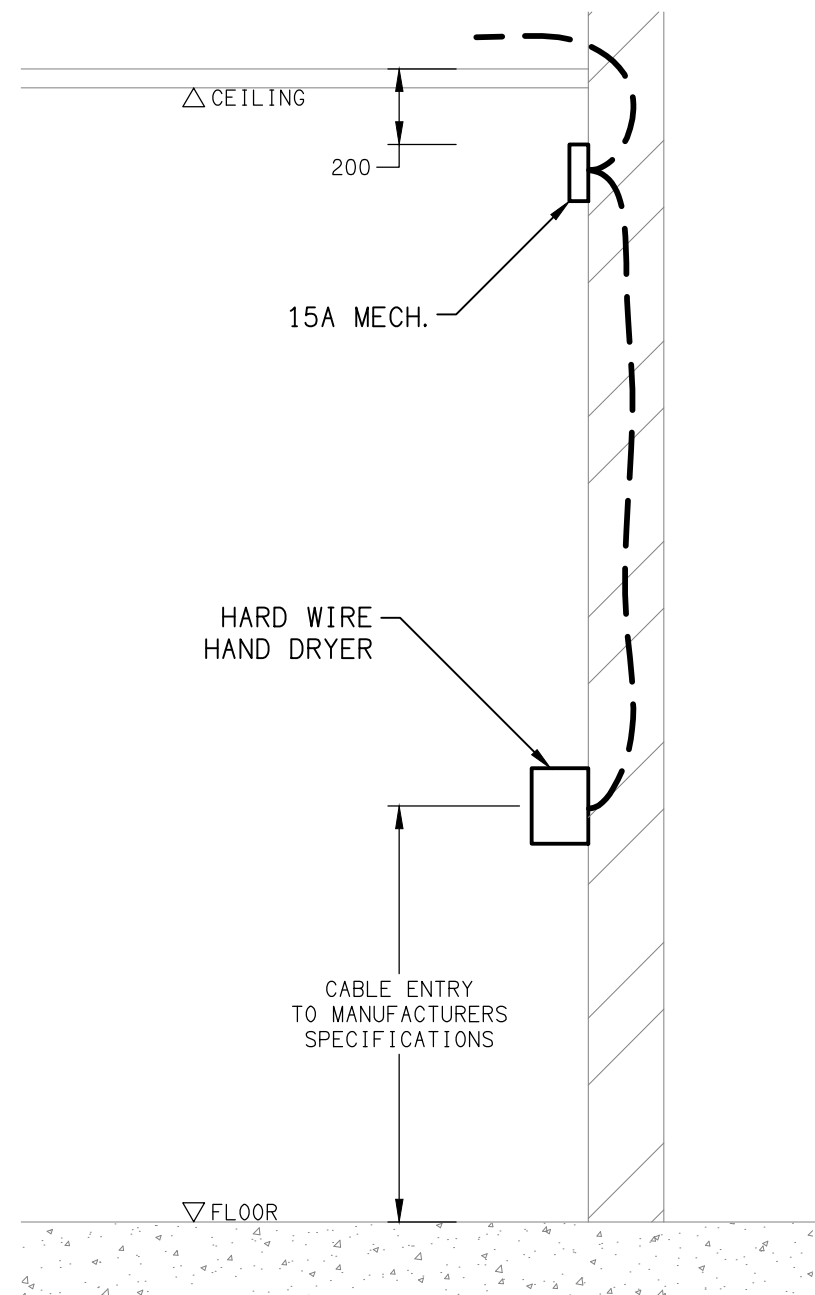
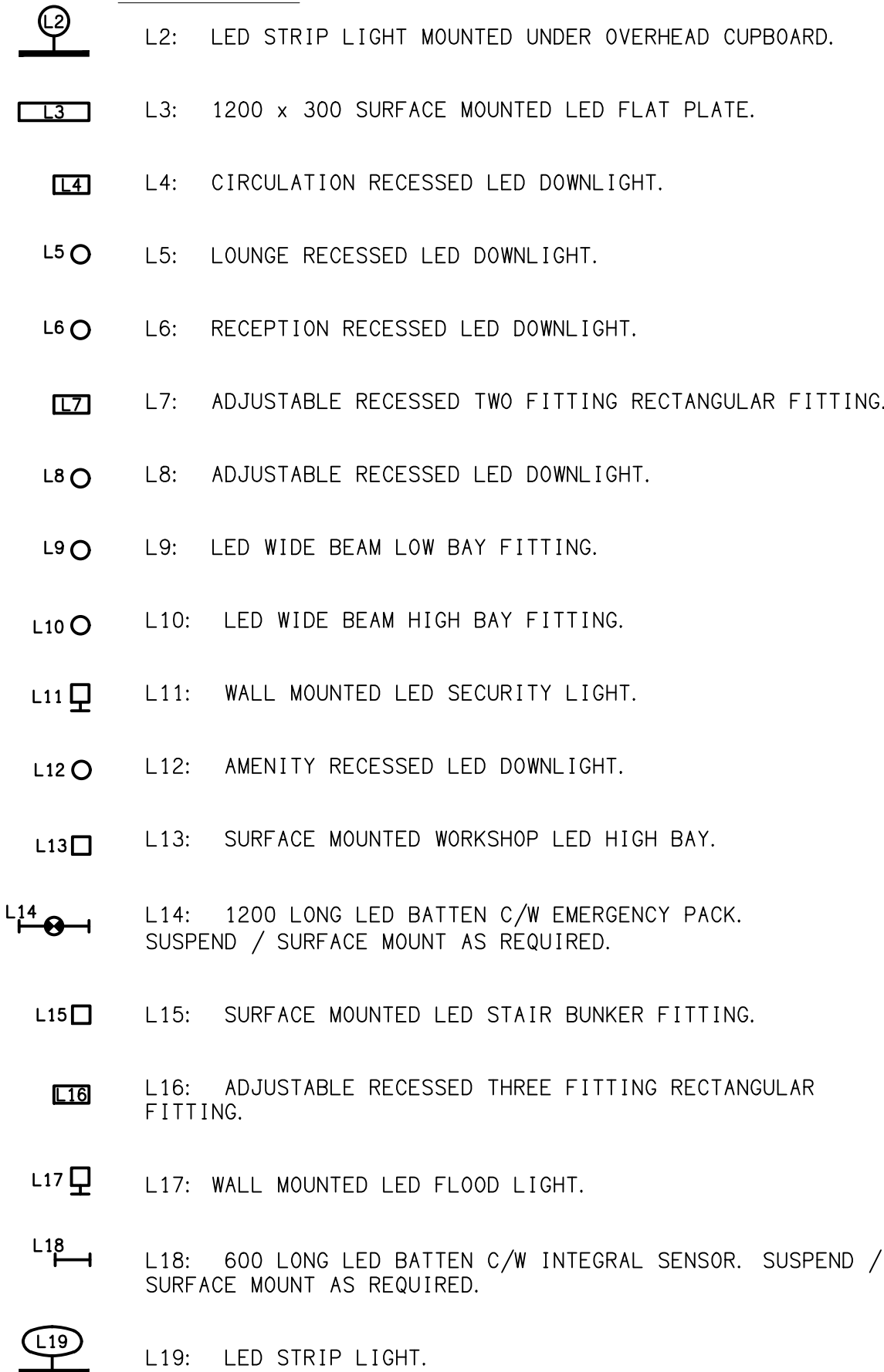
LEGEND



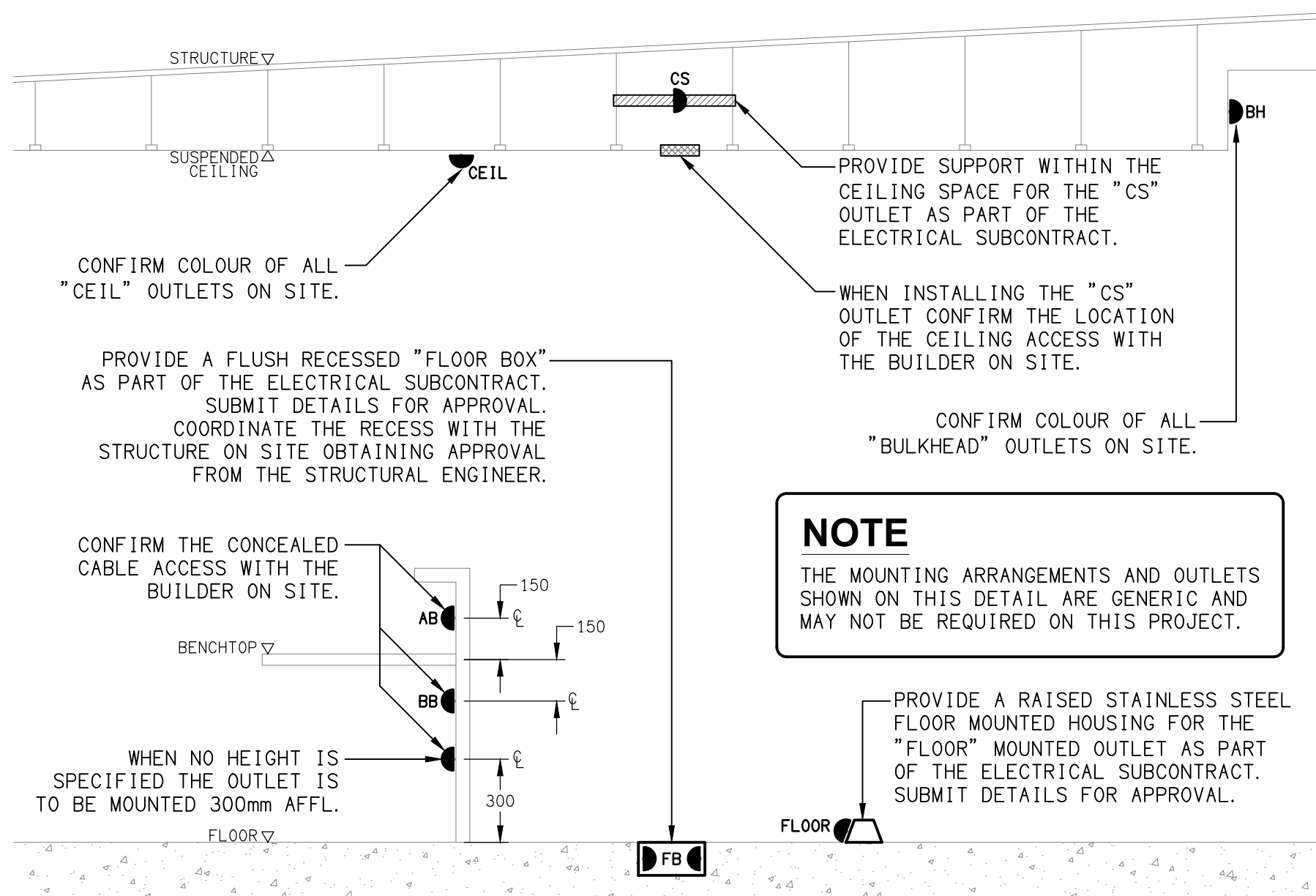
LEGEND



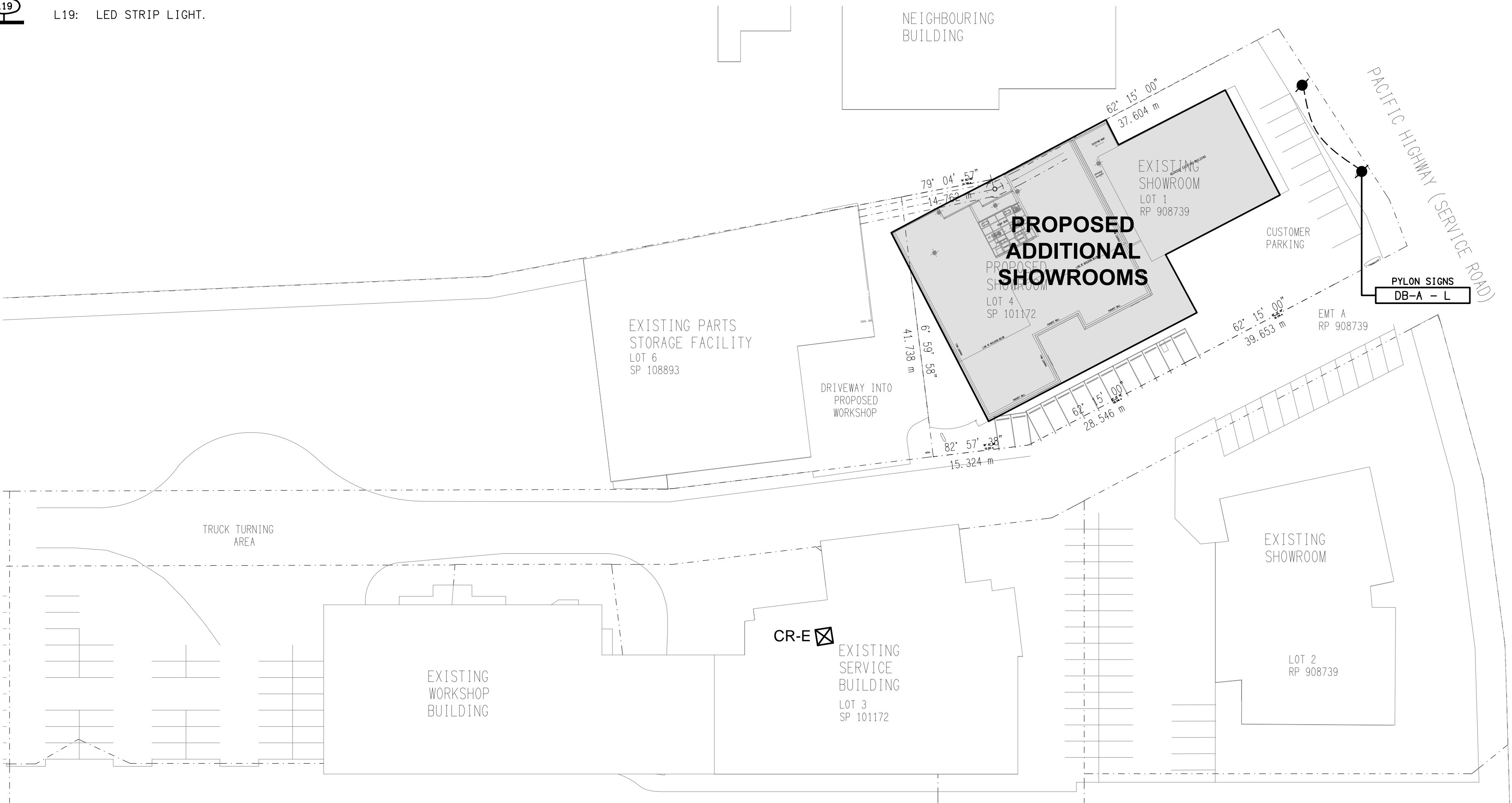
LEGEND



DETAIL  
HAND DRYER CONNECTION  
NOT TO SCALE



DETAIL  
TYPICAL OUTLET MOUNTINGS  
NOT TO SCALE



SITE PLAN  
PROPOSED ADDITIONAL SHOWROOMS  
SCALE 1:500

ELECTRICAL DESIGN GROUP BRISBANE PTY LTD  
ACN 092 710 793

TRADING AS:  
ELECTRICAL DESIGN GROUP

THE COPYRIGHT OF THIS DRAWING REMAINS THE PROPERTY OF THE ELECTRICAL DESIGN GROUP.

USE FIGURED DIMENSIONS IN PREFERENCE TO SCALE.

ALL DIMENSIONS TO BE VERIFIED ONSITE.

**ELECTRICAL DESIGN GROUP**  
ELECTRICAL BUILDING SERVICES CONSULTANTS  
BRISBANE GOLD COAST

P.O.Box 15, Sherwood Q.4075  
Phone: (07) 3278 4375  
Email: brisbane@edg.net.au  
Web: www.edg.net.au

PROJECT:  
KEEMA SPRINGWOOD  
ADDITIONAL SHOWROOMS

3519 PACIFIC HIGHWAY, SLACKS CREEK

H	CONSTRUCTION	18/07/2024
REV.	DESCRIPTION:	DATE:

DRAWING:  
**ELECTRICAL SERVICES  
LEGEND & SITE PLAN**

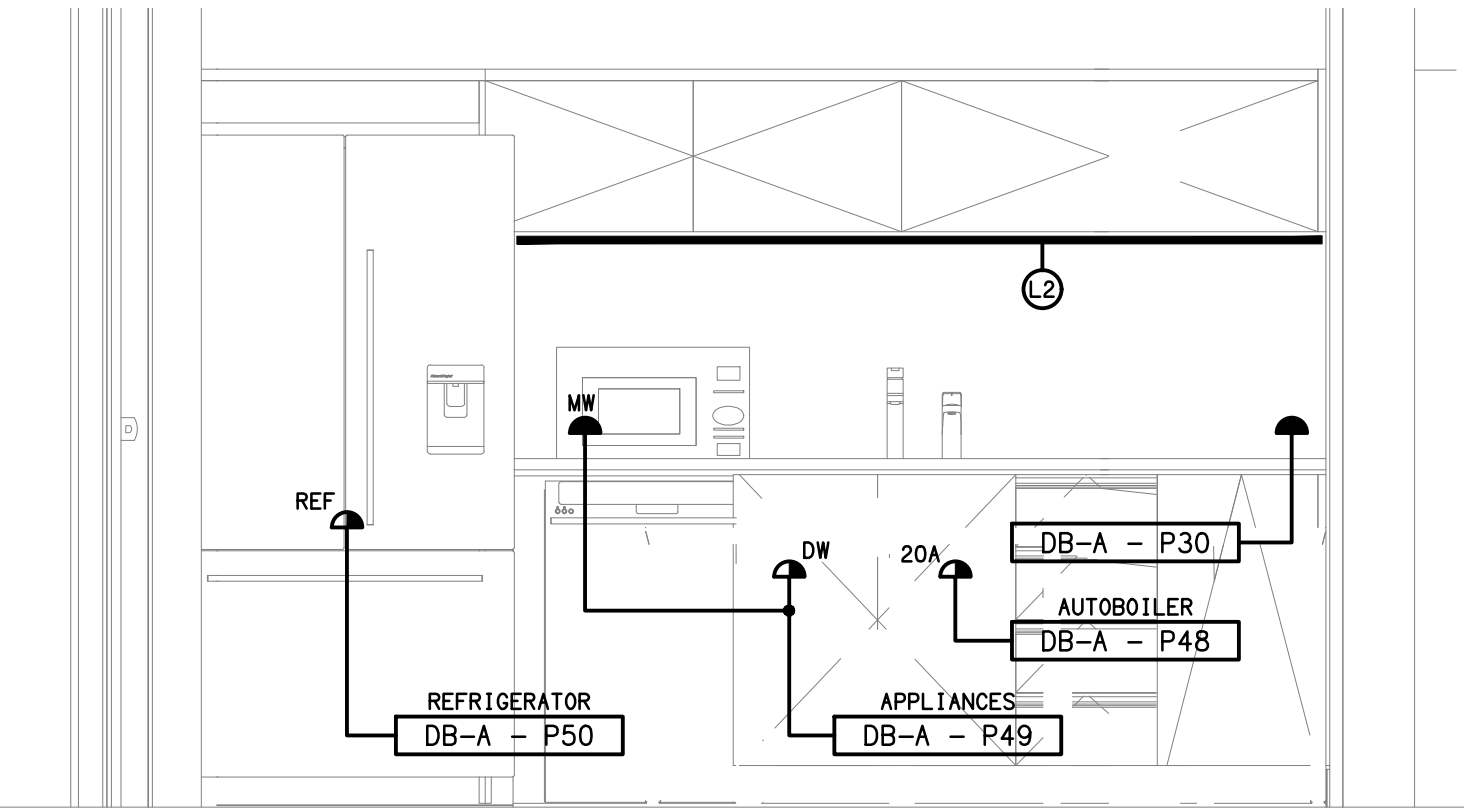
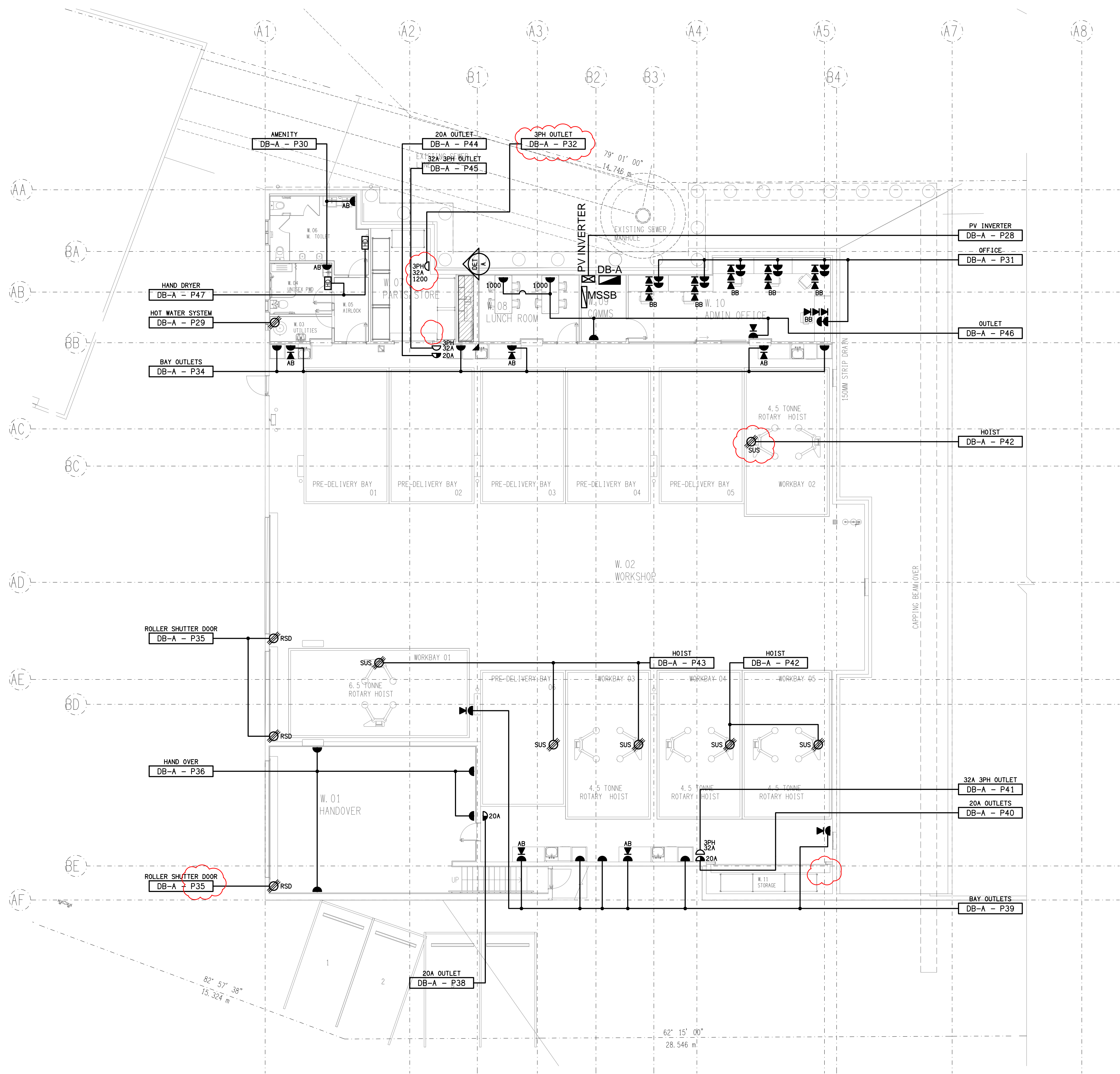
SCALE:  
1:500

AT A1

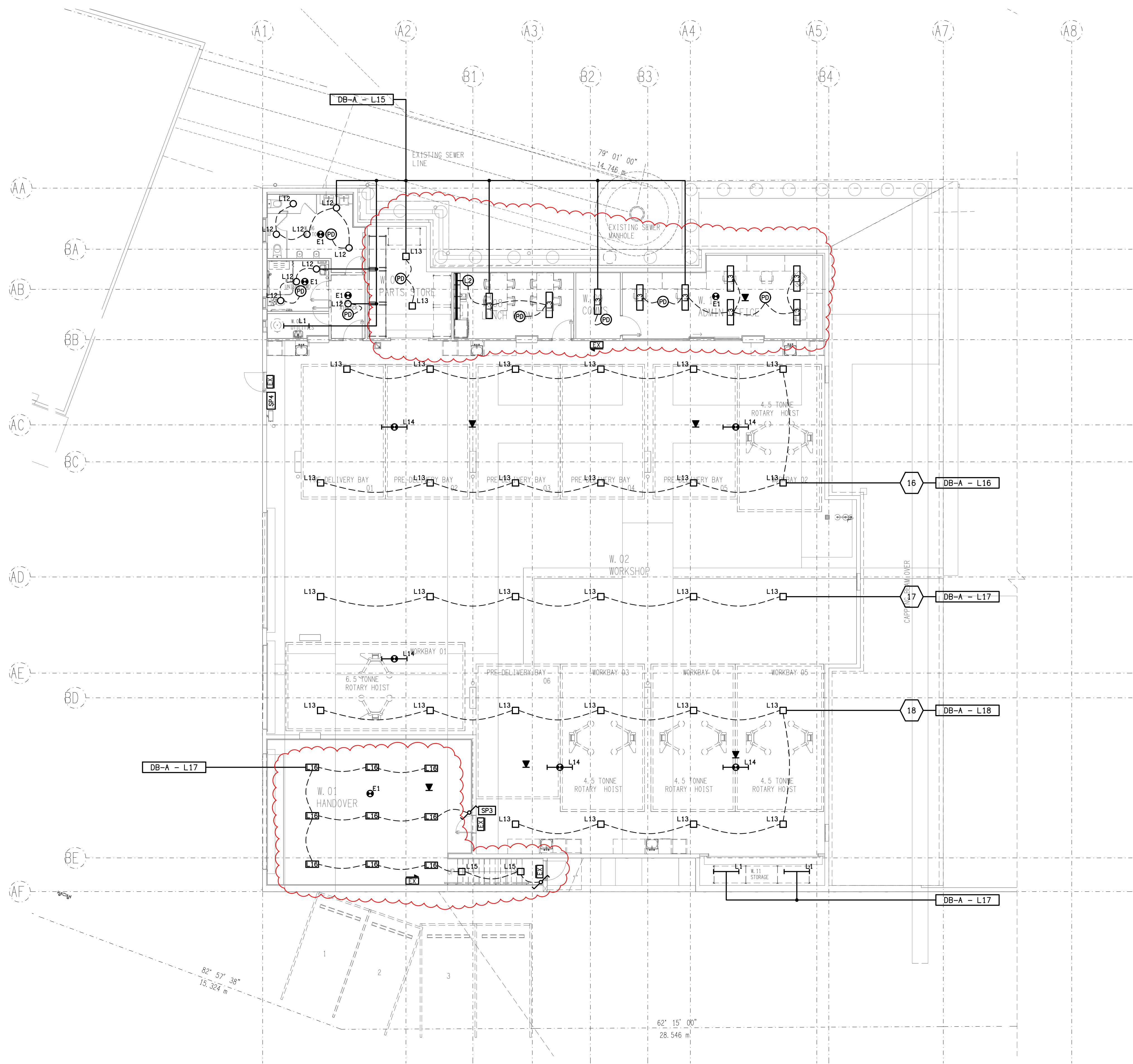
PROJECT NO:  
**C2857a**

DRAWING NO:  
**E01**

REVISION:  
**H**







ELECTRICAL DESIGN GROUP BRISBANE  
PTY LTD  
ACN 092 710 793  
TRADING AS:  
ELECTRICAL DESIGN GROUP

THE COPYRIGHT OF THIS DRAWING  
REMAINS THE PROPERTY OF THE  
ELECTRICAL DESIGN GROUP.  
USE FIGURED DIMENSIONS  
IN PREFERENCE TO SCALE.  
ALL DIMENSIONS TO BE  
VERIFIED ONSITE.

**ELECTRICAL DESIGN GROUP**  
ELECTRICAL BUILDING SERVICES CONSULTANTS  
BRISBANE GOLD COAST

P.O. Box 15, Sherwood Q.4075  
Phone: (07) 3278 4375  
Email: brisbane@edg.net.au  
Web: www.edg.net.au

PROJECT:  
**KEEMA SPRINGWOOD  
ADDITIONAL SHOWROOMS**

3519 PACIFIC HIGHWAY, SLACKS CREEK

G	CONSTRUCTION	15/02/2024
REV:	DESCRIPTION:	DATE:

DRAWING:  
**ELECTRICAL SERVICES  
BASEMENT LEVEL REFLECTED CEILING PLAN**

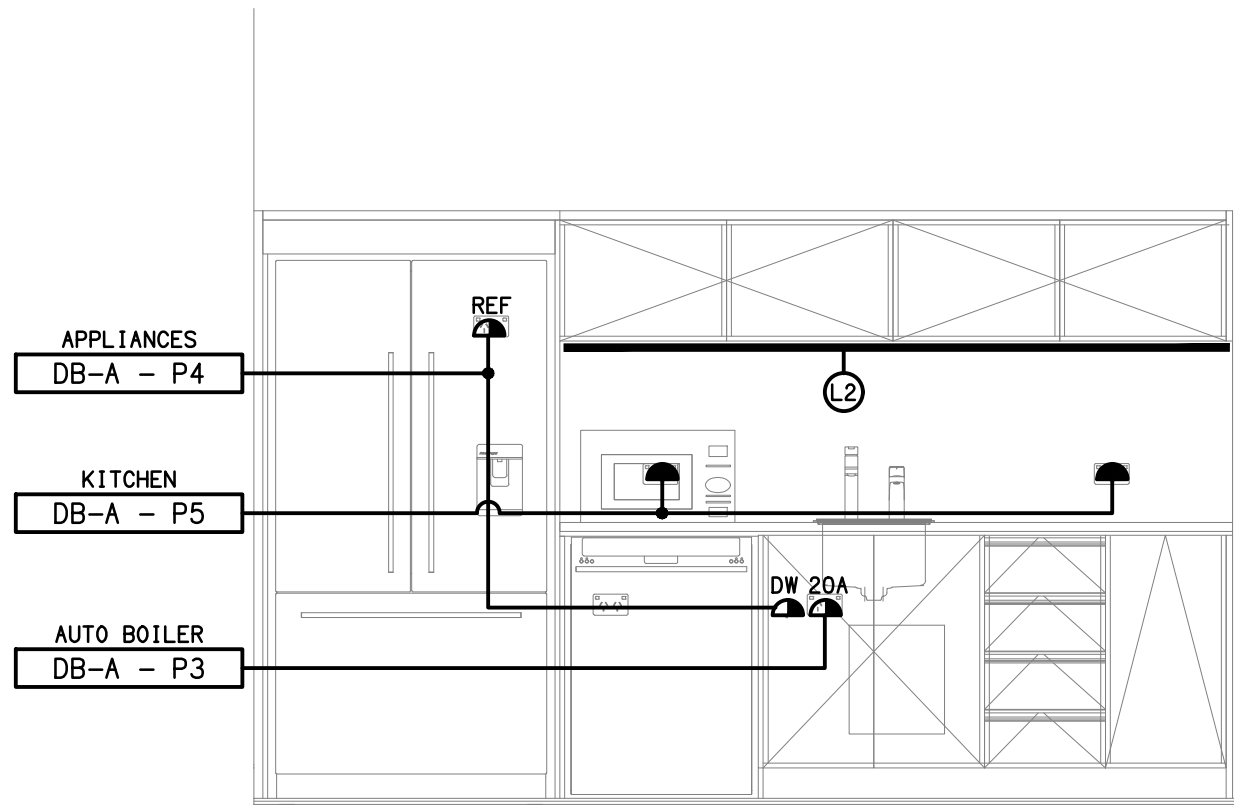
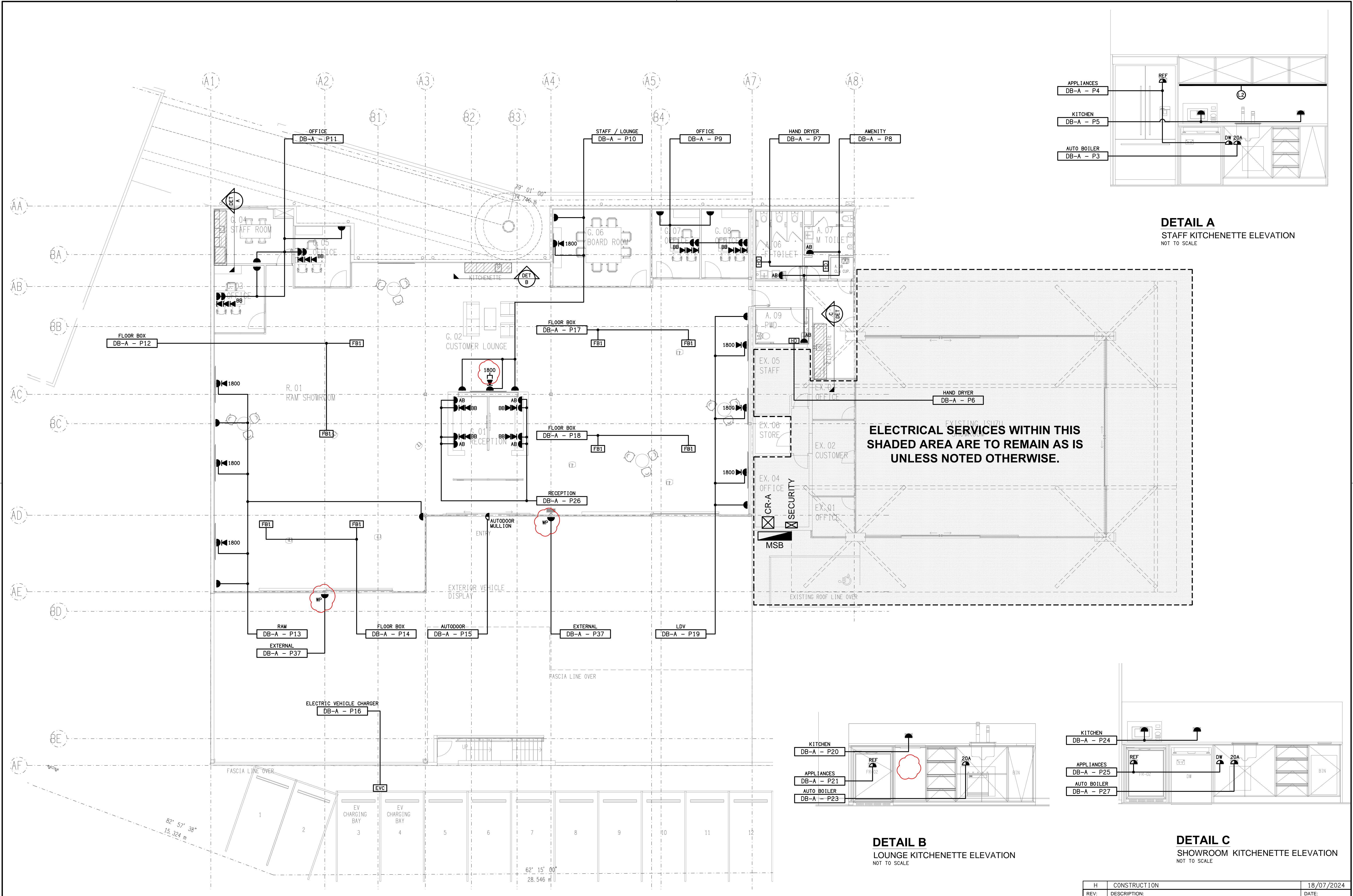
SCALE:  
1:100

AT A1

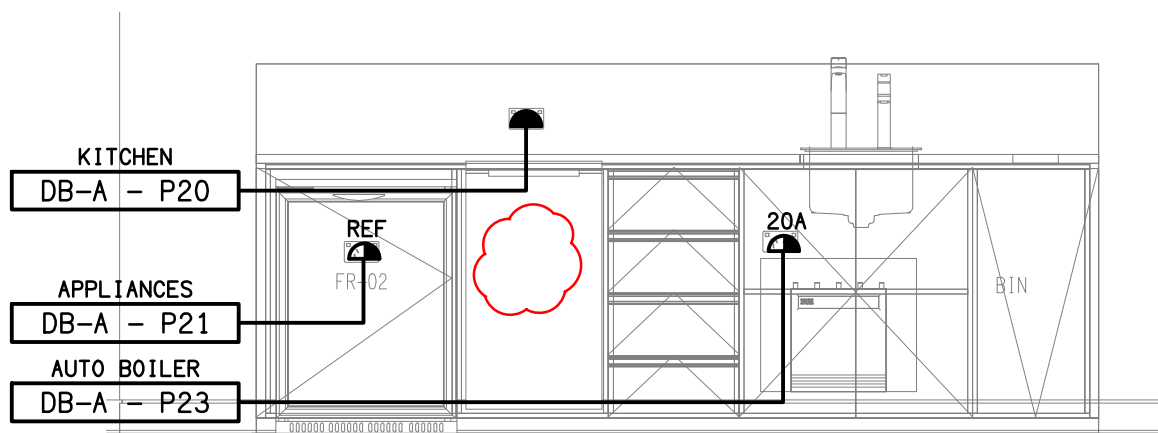
PROJECT NO:  
**C2857a**

DRAWING NO:  
**E03**

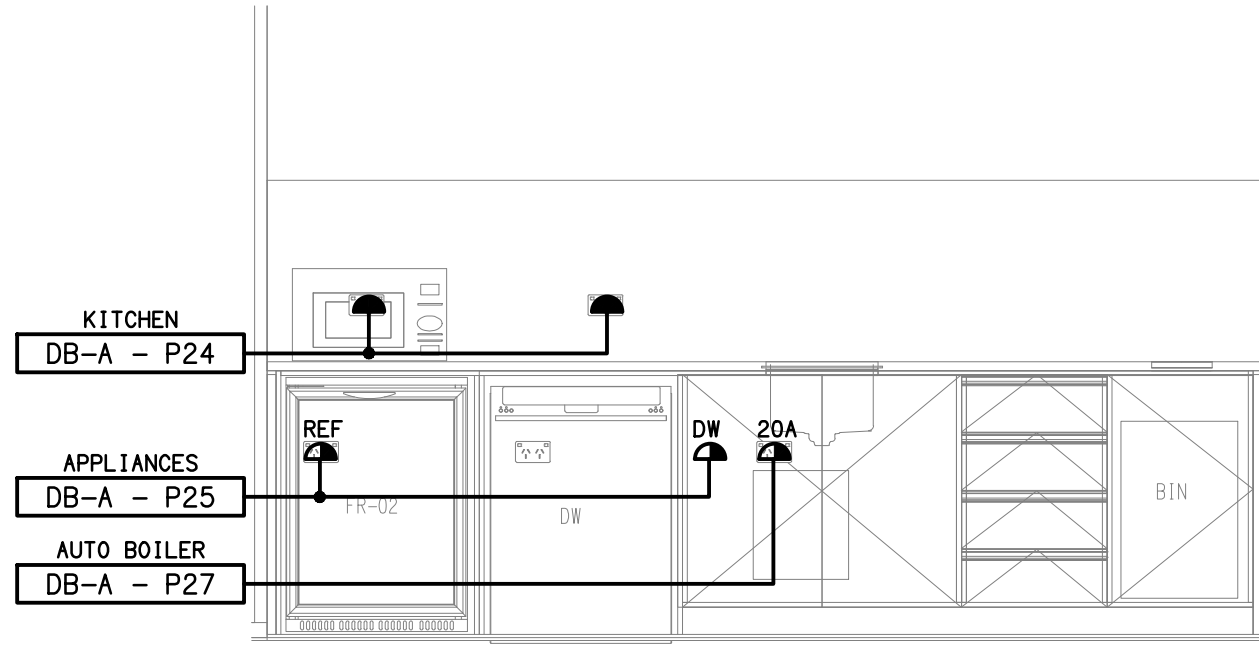
REVISION:  
**G**



**DETAIL A**  
STAFF KITCHENETTE ELEVATION  
NOT TO SCALE

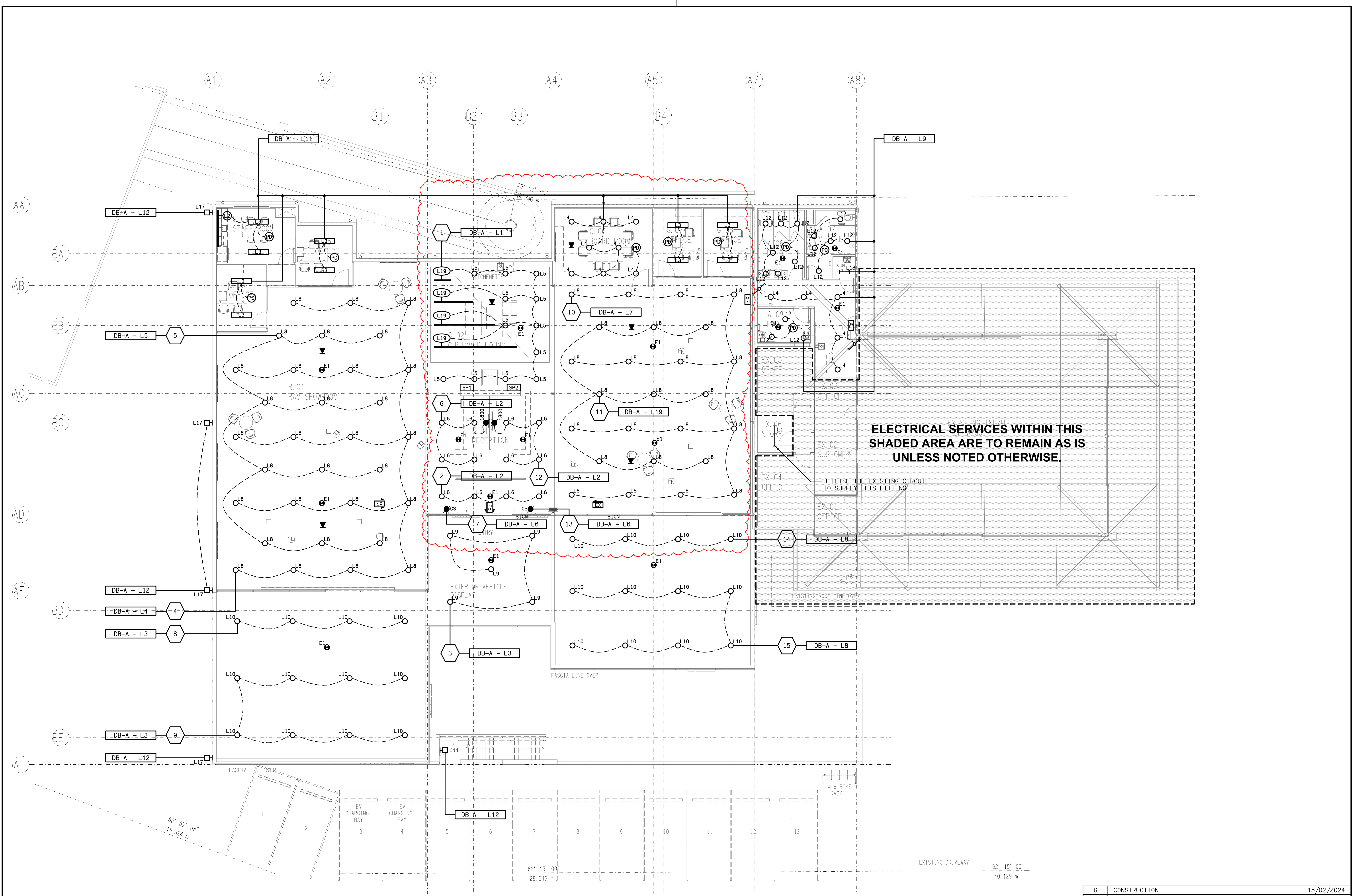


**DETAIL B**  
LOUNGE KITCHENETTE ELEVATION  
NOT TO SCALE

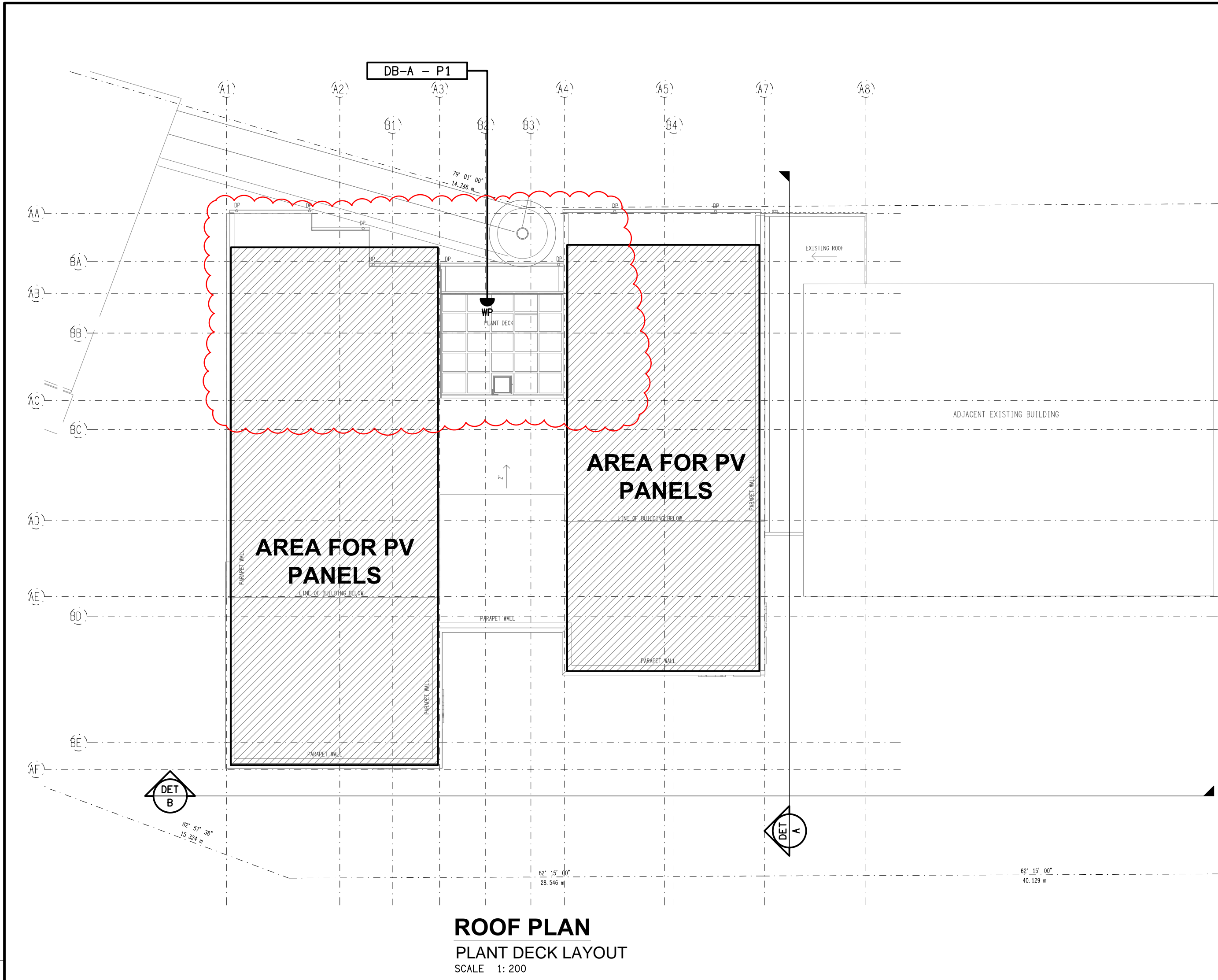


**DETAIL C**  
SHOWROOM KITCHENETTE ELEVATION  
NOT TO SCALE



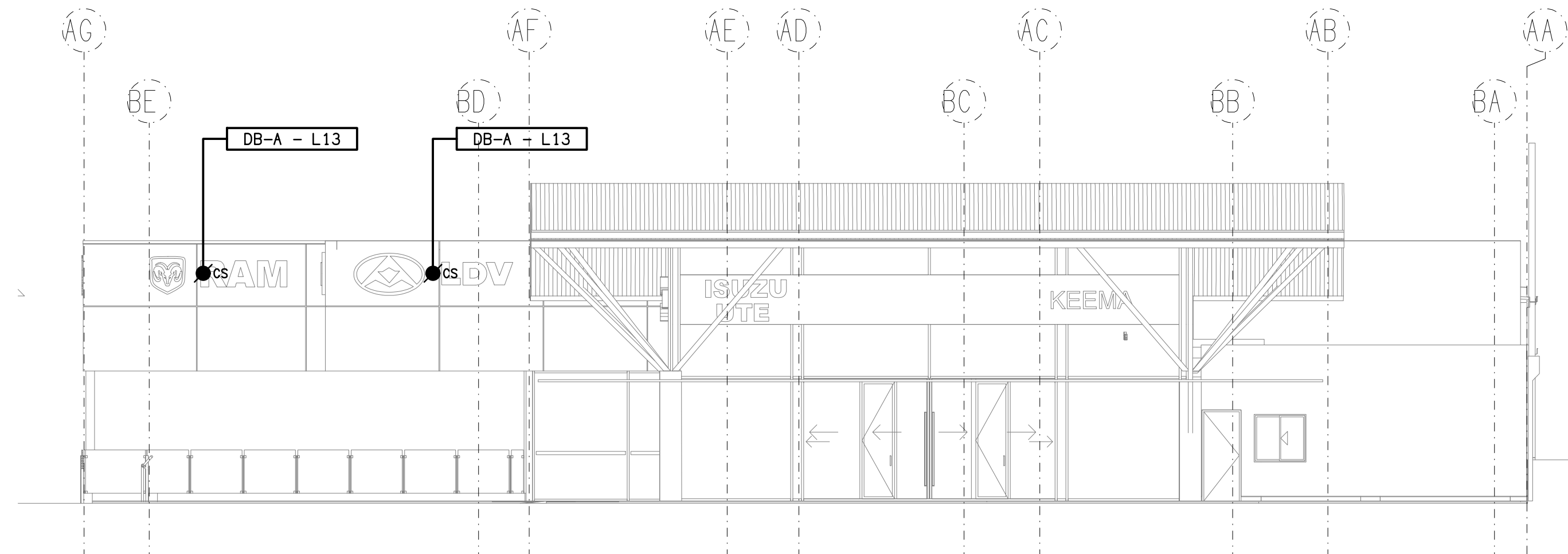




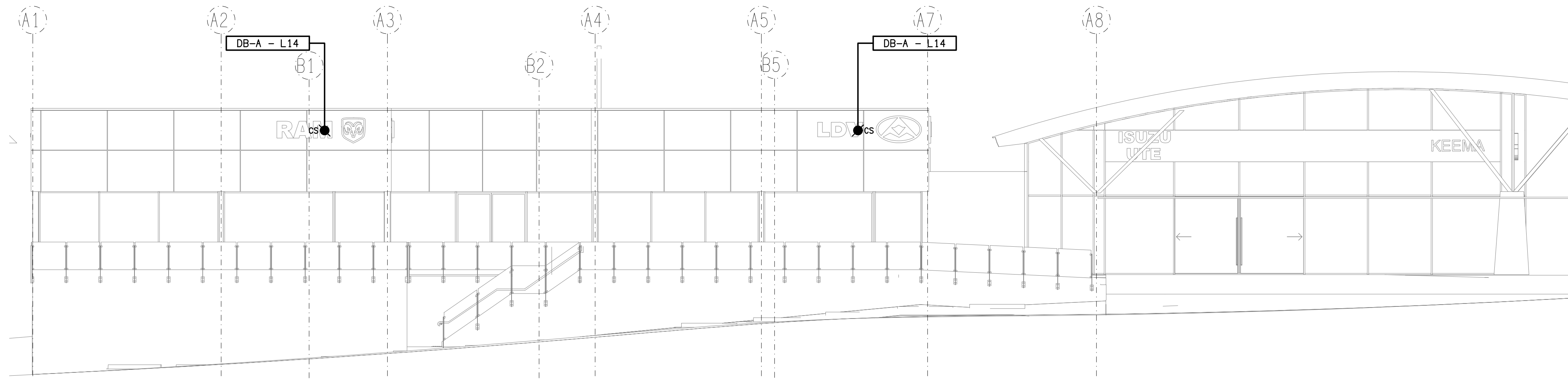


**ROOF PLAN**  
PLANT DECK LAYOUT  
SCALE 1: 200

**NOTE:**  
THE BUILDING SIGNAGE OUTLETS SHOWN ON THESE ELEVATIONS ARE TO BE LOCATED IN THE CEILING SPACE (CS) BEHIND THE SIGN.



**DETAIL A**  
EXTERNAL BUILDING ELEVATION  
SCALE 1: 100



**DETAIL B**  
EXTERNAL BUILDING ELEVATION  
SCALE 1: 100

NOTES

1. EXTENT OF WORKS

THE ELECTRICAL SERVICES SUB-CONTRACT INCLUDES BUT IS NOT LIMITED TO THE FOLLOWING:

- SUPPLY AND INSTALLATION OF ALL COMPONENTS FORMING PART OF THE ELECTRICAL SERVICES.
- CO-ORDINATION.
- INSPECTIONS.
- TESTING AND COMMISSIONING.
- MAINTENANCE.
- CABLING, CABLE SUPPORT SYSTEMS AND ACCESS.
- POWER DISTRIBUTION.
- LIGHTING.
- PV SYSTEM.
- COMMUNICATIONS CABLING.
- ALL MINOR COMPONENTS AND INCIDENTAL WORKS NOT SPECIFICALLY REFERRED TO, HOWEVER NECESSARY TO COMPLETE THE ELECTRICAL SERVICES INSTALLATION SUCH THAT IT IS HANDED OVER COMPLETE, OPERATIONAL AND FIT FOR THE INTENDED USE.

SUPPLY ALL LABOUR, MATERIALS, EQUIPMENT, AND ALL OTHER ITEMS, WHETHER MENTIONED IN DETAIL OR NOT, REQUIRED FOR THE SATISFACTORY COMPLETION OF THE ELECTRICAL SERVICES INSTALLATION, LEAVING IN FULL WORKING ORDER TO THE SATISFACTION OF THE PROJECT MANAGER.

ACCEPT FULL RESPONSIBILITY FOR LIASING, ARRANGING AND CO-ORDINATION ALL WORKS THAT HAVE AN EFFECT ON OR WILL BE AFFECTED BY THE ELECTRICAL SERVICES.

REMOVE ALL OF THE EXISTING ELECTRICAL SERVICES THAT BECOME REDUNDANT DUE TO THE WORKS INCLUDING THE EXISTING EXTERNAL SERVICES THAT CLASH WITH THE PROPOSED BUILDING.

EXTEND THE EXISTING MATV SYSTEM TO SUPPLY THE NEW MATV OUTLET.

2. WORKMANSHIP

ENSURE THAT THE WORK IS PERFORMED BY THE HOLDER OF A CURRENT ELECTRICAL SUB CONTRACTOR LICENSE. ENSURE THE INSTALLATION AND ALL COMPONENTS, FIXTURES, FITTINGS, OUTLETS AND CABLES ARE SUPPLIED AND INSTALLED TO A HIGH STANDARD THROUGHOUT, AND INSTALLED IN A NEAT AND TRADESMAN LIKE MANNER TO THE CURRENT INDUSTRY STANDARDS. ENSURE ALL MATERIALS AND COMPONENTS OF A SIMILAR TYPE ARE OF THE SAME MANUFACTURER AND INSTALLED IN A UNIFORM MANNER.

IT IS THE ELECTRICAL SUB CONTRACTOR'S RESPONSIBILITY TO ENSURE THAT THE INSTALLATION IS FIT FOR PURPOSE AND IS PROVIDED AS A COMPLETE WORKING INSTALLATION. IT IS THE ELECTRICAL SUB CONTRACTOR'S RESPONSIBILITY TO PROVIDE ALL COMPONENTS, FITTINGS, FIXTURES, SYSTEMS, PROGRAMMING ETC IRRESPECTIVE OF THE LEVEL DETAILED IN THE DOCUMENTS SUCH THAT THE INSTALLATION IS PROVIDED AS A COMPLETE WORKING INSTALLATION.

CONCEAL ALL WIRING AND CONDUITS. EXPOSED CABLING OR CONDUITS ARE GENERALLY NOT ACCEPTABLE. IT IS NOTED THAT CHASING AND REINSTATEMENT WILL BE REQUIRED. ENSURE ALL COMPONENTS, EQUIPMENT AND MATERIALS SUPPLIED ARE NEW, UNUSED, DESIGNED AND SELECTED TO ENSURE SATISFACTORY OPERATION UNDER VARYING ATMOSPHERIC, CLIMATIC, HUMID TROPICAL CONDITIONS WITHOUT DISTORTION AND DETERIORATION IN ANY PART AFFECTING EFFICIENCY AND RELIABILITY OF THE SYSTEMS. DESIGN AND SELECT ALL EQUIPMENT TO PROVIDE THE NECESSARY SAFETY TO HUMAN LIFE AND PROPERTY DURING OPERATION AND MAINTENANCE WITH PARTICULAR ATTENTION GIVEN TO ELECTRICAL SAFETY AND SEGREGATION PRECAUTIONS.

CHECK THE FINISHED PAINTWORK AROUND THE AREA OF EACH INSTALLATION AND TOUCH UP ALL DAMAGED PARTS AND FINISHES AFTER THE INSTALLATION OF THE ELECTRICAL SERVICES.

ALL WORKS ARE TO BE CARRIED OUT IN ACCORDANCE WITH THE BUILDER'S PROGRAM. ENSURE ALL FINAL LOCATIONS OF OUTLETS AND FITTINGS ARE CO-ORDINATED ONSITE WITH THE ARCHITECT AND ALL OTHER SERVICES, TO THE APPROVAL OF THE PROJECT MANAGER. ALLOW TO CO-ORDINATE THE FINAL LOCATION OF ALL EQUIPMENT, FITTINGS, & OUTLETS, SUCH THAT THEY ARE INSTALLED IN ACCORDANCE WITH THE AS3000 RESTRICTED ZONES, AND ARE NOT COVERED INAPPROPRIATELY.

ENSURE THAT ALL METAL SURFACES ARE SUITABLY PROTECTED AGAINST CORROSION, AND THAT ALL PLASTIC MATERIALS ARE UV STABILISED.

PROVIDE ALL MATERIALS AS NEW, AND OF THE HIGHEST CLASS AVAILABLE FOR THEIR RESPECTIVE TYPES. ENSURE ALL ASPECTS OF THE WORK ARE OF A HIGH STANDARD THROUGHOUT, AND INSTALLED IN A NEAT AND TRADESMAN LIKE MANNER, TO THE CURRENT INDUSTRY STANDARDS.

3. STANDARDS

IRRESPECTIVE OF INFORMATION CONTAINED IN THE ELECTRICAL SERVICES DOCUMENTS OR IN INSTRUCTIONS, IT IS THE ELECTRICAL SUB CONTRACTOR'S RESPONSIBILITY TO ENSURE ALL ELECTRICAL SERVICES WORKS ARE INSTALLED IN ACCORDANCE WITH THE REQUIREMENTS OF THE FOLLOWING. REFER ANY DISCREPANCIES BETWEEN THE REQUIREMENTS OF THE FOLLOWING AND/OR THE ELECTRICAL SERVICES DOCUMENTS AND INSTRUCTIONS TO THE ARCHITECT FOR CLARIFICATION PRIOR TO THE PLACING OF ORDERS, FABRICATION OR INSTALLATION OF THE ITEMS/METHODS IN DISCREPANCY.

- NCC BUILDING CODE OF AUSTRALIA.
- ELECTRICITY ACT.
- ELECTRICAL SAFETY ACT.
- AS/NZS3000.
- AS3008.
- AS1670.
- WORKPLACE HEALTH AND SAFETY ACT.
- TELECOMMUNICATIONS ACT.
- ACMA REQUIREMENTS.

4. AUTHORITIES

ENSURE ALL OF THE ELECTRICAL SERVICES COMPLY WITH THE REQUIREMENTS OF ALL REGULATORY AUTHORITIES HAVING JURISDICTION OVER THE SITE INCLUDING BUT NOT LIMITED TO THE FOLLOWING:

- ACMA.
- LOCAL COUNCIL.
- LOCAL SUPPLY AUTHORITY.
- STATE GOVERNMENT DEPARTMENT OF ENVIRONMENT AND HERITAGE.
- QLD GOVERNMENT, DIVISION OF WORKPLACE, HEALTH AND SAFETY.
- QLD FIRE AND RESCUE AUTHORITY.

5. CABLES

UNLESS OTHERWISE SPECIFIED, INSTALL AND TERMINATE CABLES IN ACCORDANCE WITH THE MANUFACTURERS' RECOMMENDATIONS. DETERMINE THE FINAL ROUTES TO SUIT THE BUILDING STRUCTURE AND SITE CONDITIONS. UNLESS NOTED OTHERWISE, PROVIDE ALL 240 VOLT POWER AND LIGHTING WIRING AS 2.5mm² TWIN & EARTH STRANDED COPPER CONDUCTORS, PVC INSULATED 0.6/1kV V75 GRADE TO AS3174, PROTECTED BY A 20 AMP CIRCUIT BREAKER. ALL CONDUIT AND FITTINGS TO BE RIGID UPVC TO AS2053, UNLESS NOTED OTHERWISE.

NOTES

6. POWER DISTRIBUTION

THE POWER DISTRIBUTION COMPONENT OF THIS CONTRACT INCLUDES THE UPGRADING OF THE EXISTING MAIN SWITCHBOARD NEW SUBMAINS FROM THE MSB TO A NEW DISTRIBUTION BOARD DB-A AND THE NEW MSSB. A NEW PV SYSTEM IS TO BE PROVIDED. ALL OF THE EXISTING CIRCUITS THAT BECOME REDUNDANT ARE TO BE REMOVED AND THE LABELLING UPDATED. THE POWER DISTRIBUTION COMPONENT OF THIS CONTRACT INCLUDES, BUT IS NOT LIMITED TO THE FOLLOWING EXTENT OF WORK:

- POWER DISTRIBUTION.
- EARTHING.
- REMOVAL OF EXISTING REDUNDANT CIRCUITS.
- UPGRADING OF THE EXISTING MSB.
- DEMAND CONTROL SYSTEM.
- DB-A AND MSSB SUBMAINS.
- DB-A.
- ELECTRIC VEHICLE CHARGER.
- PV SYSTEM.
- CIRCUITS.
- ISOLATORS AND OUTLETS.
- TESTING AND COMMISSIONING.

ENSURE THAT POWER IS MAINTAINED TO THE REMAINING PARTS OF THE BUILDING THAT ARE NOT PART OF THE WORKS BETWEEN 6.00AM AND 11.00PM. ANY INTERRUPTIONS TO THE POWER SUPPLY MUST BE LIMITED TO LESS THAN FOUR HOURS BETWEEN 11.00PM AND 6.00AM AND THE CLIENT MUST BE PROVIDED WITH TWO WEEKS NOTICE PRIOR TO THE INTERRUPTION.

ARRANGE WITH THE RETAILER TO HAVE THE EXISTING METERING UPGRADED TO ACCOMMODATE THE PV SYSTEM.

REMOVE ALL OF THE EXISTING ELECTRICAL SERVICES THAT BECOME REDUNDANT DUE TO THE WORKS AND UPDATE THE DB-M SCHEDULE ACCORDINGLY.

7. LIGHTING

ALL OF THE LIGHT FITTINGS, LAMPS AND ACCESSORIES ARE TO BE PROVIDED AS PART OF THIS CONTRACT. THE LIGHTING COMPONENT OF THIS CONTRACT INCLUDES, BUT IS NOT LIMITED TO THE FOLLOWING EXTENT OF WORK:

- LIGHTING.
- LIGHT FITTINGS AND ACCESSORIES.
- LAMPS.
- EARTHING OF THE LIGHTING INSTALLATION.
- LIGHTING CONTROL.
- LIGHTING SUBCIRCUITS.
- TESTING AND COMMISSIONING.

8. COMMUNICATIONS

THE COMMUNICATIONS CABLING COMPONENT OF THIS CONTRACT INCLUDES REPLACING THE EXISTING COMMUNICATIONS RACK TO ACCOMMODATE THE ADDITIONAL COMMUNICATIONS OUTLETS AND NEW FIBRE SERVICE. PROVIDE A NEW UNDERGROUND 12 CORE OM3 FULLY TERMINATED AND TESTED WITH LC CONNECTORS FROM THE EXISTING COMMUNICATIONS RACK CR-E TO CR-A. UTILISE EXISTING CABLE PATHWAYS WHERE APPROPRIATE AND PROVIDE ADDITIONAL PATHWAYS AS REQUIRED. THE ENTIRE RUN FROM CR-E TO CR-A MUST BE CONCEALED.

REINSTATE ANY HARDSCAPES THAT NEED TO BE REMOVED TO ACCOMMODATE ANY NEW PATHWAYS.

ALL OF THE EXISTING COMMUNICATION CABLES THAT BECOME REDUNDANT ARE TO BE REMOVED. ALL EXISTING COMMUNICATIONS CABLING SUPPLIED FROM THE EXISTING CR-A MUST BE RECONNECTED TO THE NEW CR-A. THE COMMUNICATIONS CABLING COMPONENT OF THIS CONTRACT INCLUDES, BUT IS NOT LIMITED TO THE FOLLOWING EXTENT OF WORK:

- UPGRADING OF THE COMMUNICATIONS RACK CR-E TO ACCOMMODATE THE FIBRE SERVICE.
- REPLACING THE EXISTING COMMUNICATIONS RACK CR-A.
- CAT 6 COMMUNICATIONS OUTLETS
- REMOVAL OF EXISTING REDUNDANT CABLING.
- TESTING AND COMMISSIONING.

9. ABBREVIATIONS

A - AMP CURRENT RATING  
AB - MOUNT ABOVE BENCH.  
AFFL - ABOVE FINISHED FLOOR LEVEL.  
BB - MOUNT BELOW BENCH.  
BH - MOUNT ON BULKHEAD.  
CEIL - MOUNT ON CEILING.  
CS - MOUNT WITHIN CEILING SPACE.  
C/W - COMPLETE WITH.  
DW - DISHWASHER.  
HP - HOT PLATE.  
MCB - MINIATURE CIRCUIT BREAKER.  
MSB - MAIN SWITCHBOARD.  
MSSB - MECHANICAL SERVICES SWITCHBOARD.  
MW - MICROWAVE.  
N - NEON / LED INDICATOR WHEN ON.  
NTS - NOT TO SCALE.  
OV - OVEN.  
RCBO - CIRCUIT PROTECTED VIA A 30mA RESIDUAL CURRENT DEVICE INTEGRAL TO THE CIRCUIT BREAKER. 3-PHASE RCBO TO BE 4-POLE.  
REF - REFRIGERATOR.  
SUS - MOUNT SUSPENDED FROM CEILING.  
UNO - UNLESS NOTED OTHERWISE.  
WP - WEATHERPROOF TO IP56 UNO.  
500 - NUMBER DENOTES MOUNTING HEIGHT AFFL.

ELECTRICAL DESIGN GROUP BRISBANE PTY LTD ACN 092 710 793		THE COPYRIGHT OF THIS DRAWING REMAINS THE PROPERTY OF THE ELECTRICAL DESIGN GROUP.		PROJECT: KEEMA SPRINGWOOD ADDITIONAL SHOWROOMS		D CONSTRUCTION 18/07/2024	
TRADING AS: ELECTRICAL DESIGN GROUP		USE FIGURED DIMENSIONS IN PREFERENCE TO SCALE.		DRAWING: ELECTRICAL SERVICES NOTES		REV: DESCRIPTION: DATE:	
ALL DIMENSIONS TO BE VERIFIED ONSITE.		P.O.Box 15, Sherwood Q.4075 Phone: (07) 3278 4375 Email: brisbane@edg.net.au Web: www.edg.net.au		3519 PACIFIC HIGHWAY, SLACKS CREEK		SCALE: NOT TO SCALE AT A1	
		ELECTRICAL DESIGN GROUP BRISBANE GOLD COAST		PROJECT NO: DRAWING NO: REVISION:		C2857a E07 D	



EQUIPMENT:

TEST - TEST PUSH BUTTON MOUNTED ON THE DISTRIBUTION BOARD ESCUTCHEON.

RESET - RESET PUSH BUTTON MOUNTED ON THE DISTRIBUTION BOARD ESCUTCHEON.

LAMP - AMBER TEST INDICATING LAMP MOUNTED ON THE DISTRIBUTION BOARD ESCUTCHEON.

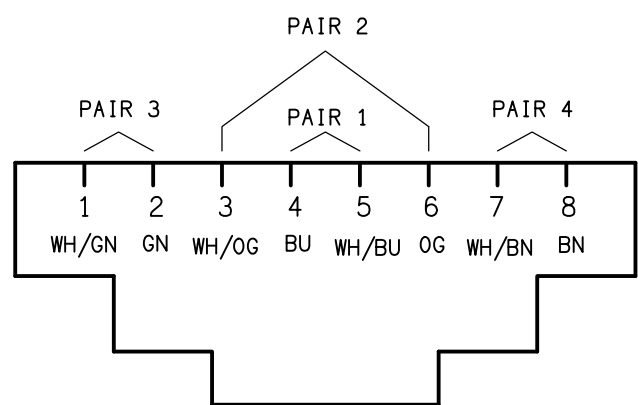
Ta - ADJUSTABLE 0-3 HOUR TIMED RELAY.

Tb - 15 MINUTE RUN-ON TIMER TO OPERATE UPON THE RETURN OF MAINS POWER.

Cx - CONTACTOR x.

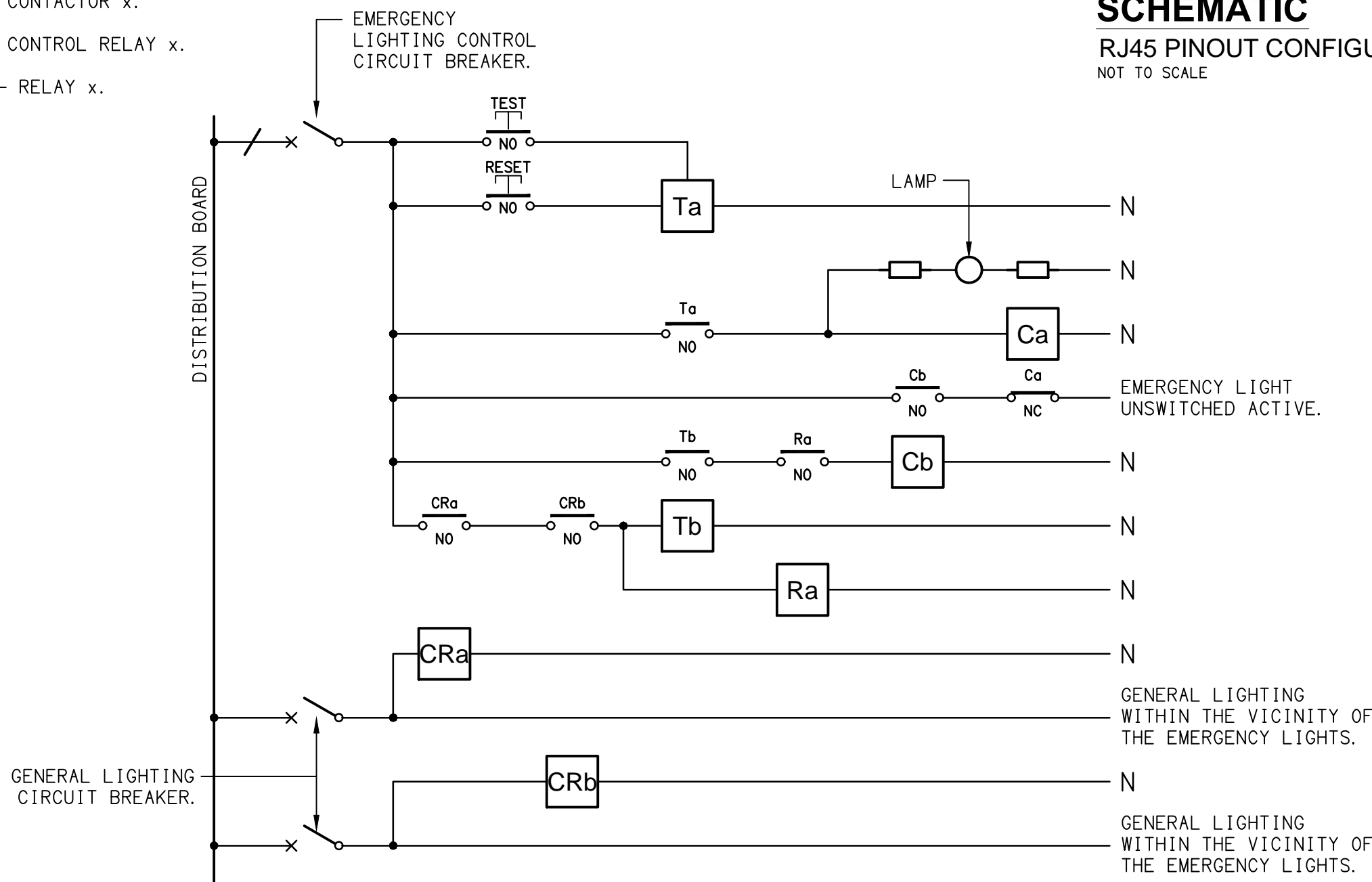
CRx - CONTROL RELAY x.

Rx - RELAY x.



SCHEMATIC

RJ45 PINOUT CONFIGURATION  
NOT TO SCALE



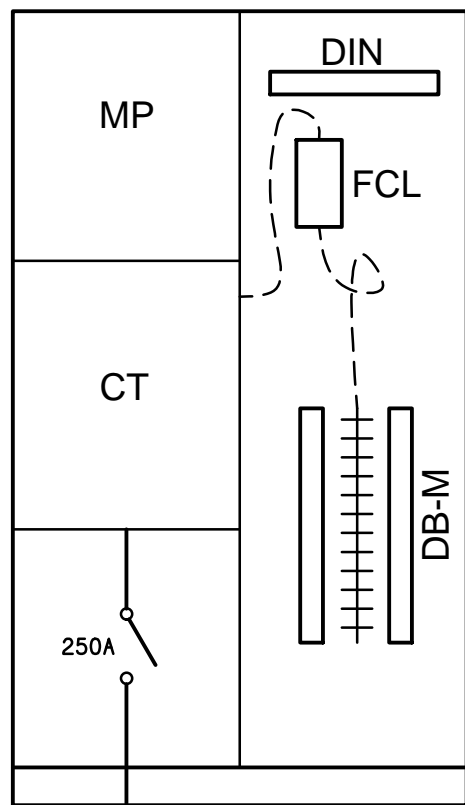
SCHEMATIC

EMERGENCY LIGHTING  
NOT TO SCALE

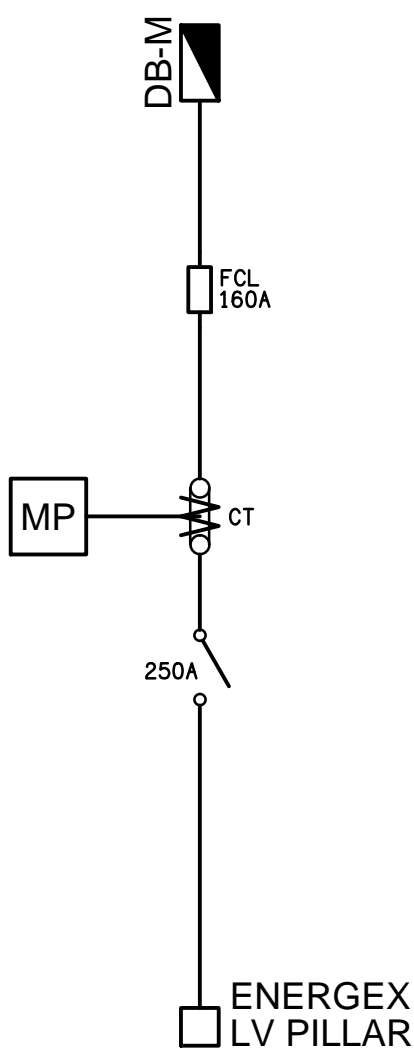
NOTES

1. THE EMERGENCY LIGHT UNSWITCHED ACTIVE / GENERAL LIGHTING SWITCHED ACTIVE CIRCUIT ARRANGEMENT AND CONTROL IS TYPICAL FOR ALL CIRCUITS SUPPLYING EMERGENCY LIGHTS.

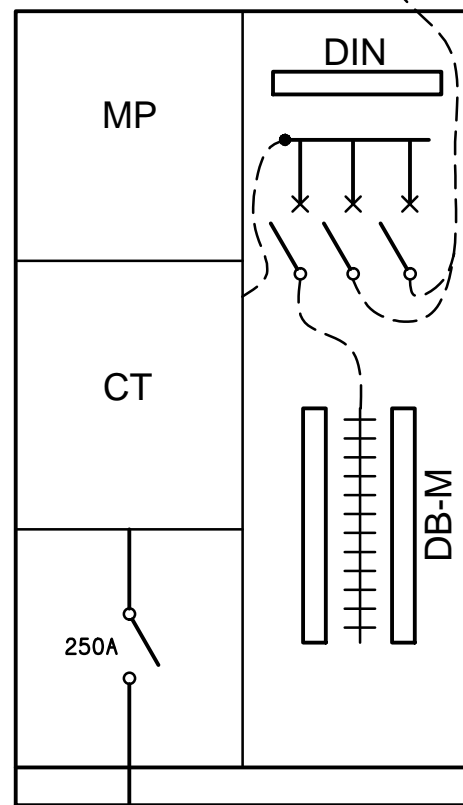
2. PROVIDE ADDITIONAL CONTROL RELAYS (CRx) CONFIGURED AS PER CRa AND CRb FOR ALL ADDITIONAL LIGHTING CIRCUITS THAT SUPPLY LIGHTS IN THE VICINITY OF THE EMERGENCY LIGHTS.



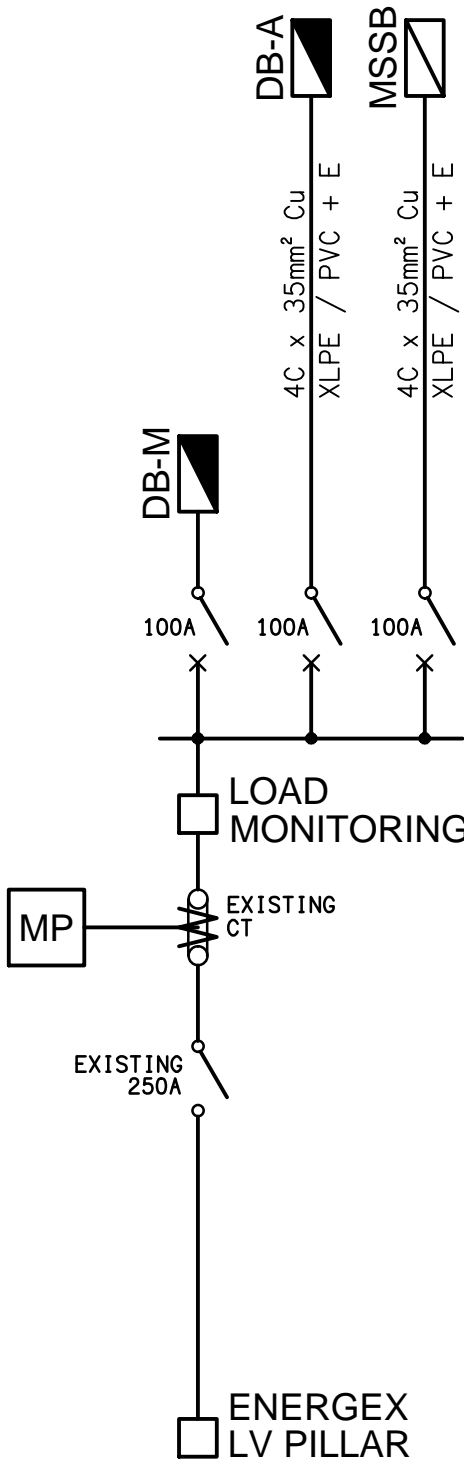
EXISTING MSB  
DETAIL ELEVATION  
NOT TO SCALE



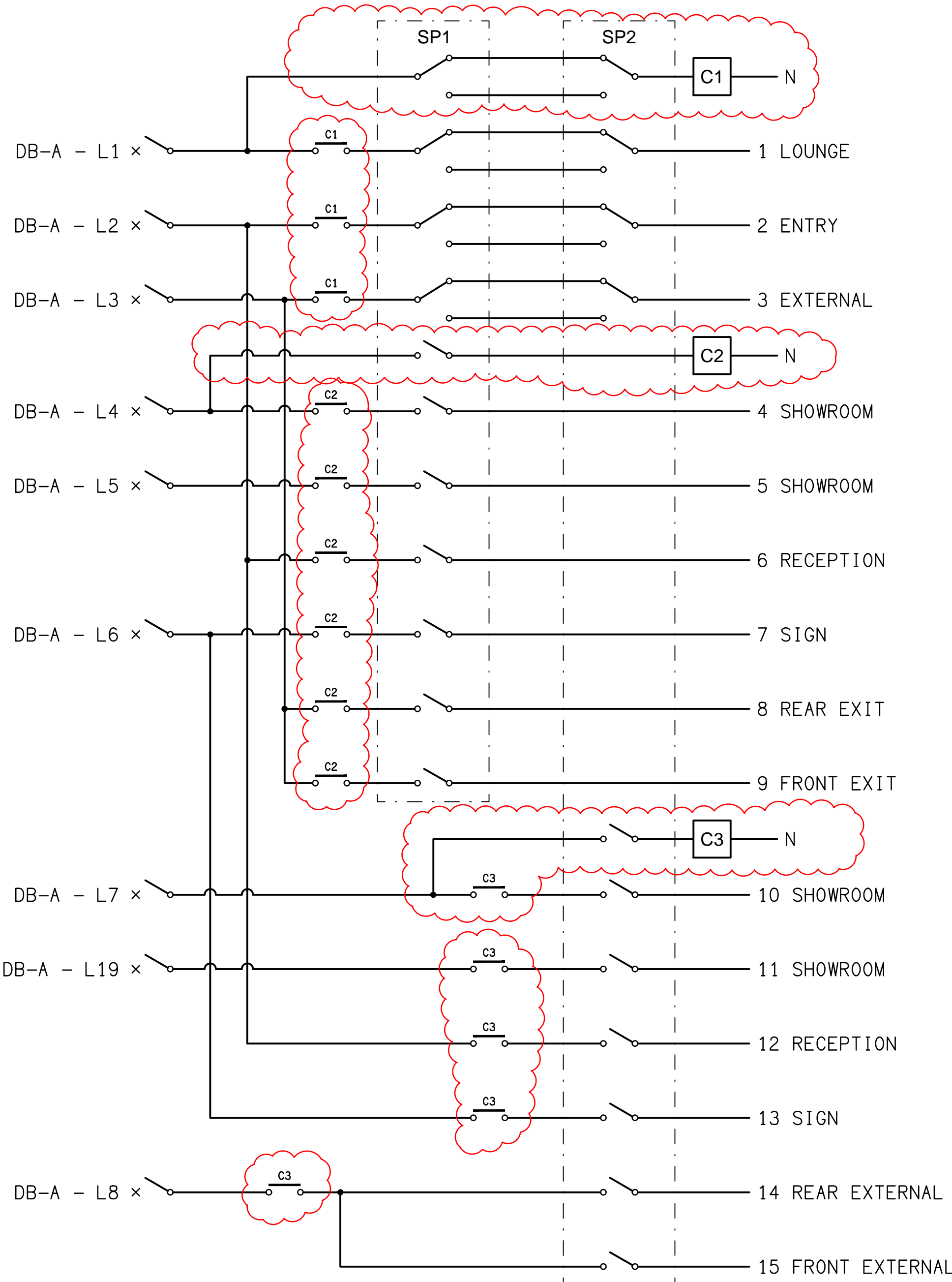
EXISTING MSB  
SCHEMATIC  
NOT TO SCALE



PROPOSED MSB  
DETAIL ELEVATION  
NOT TO SCALE

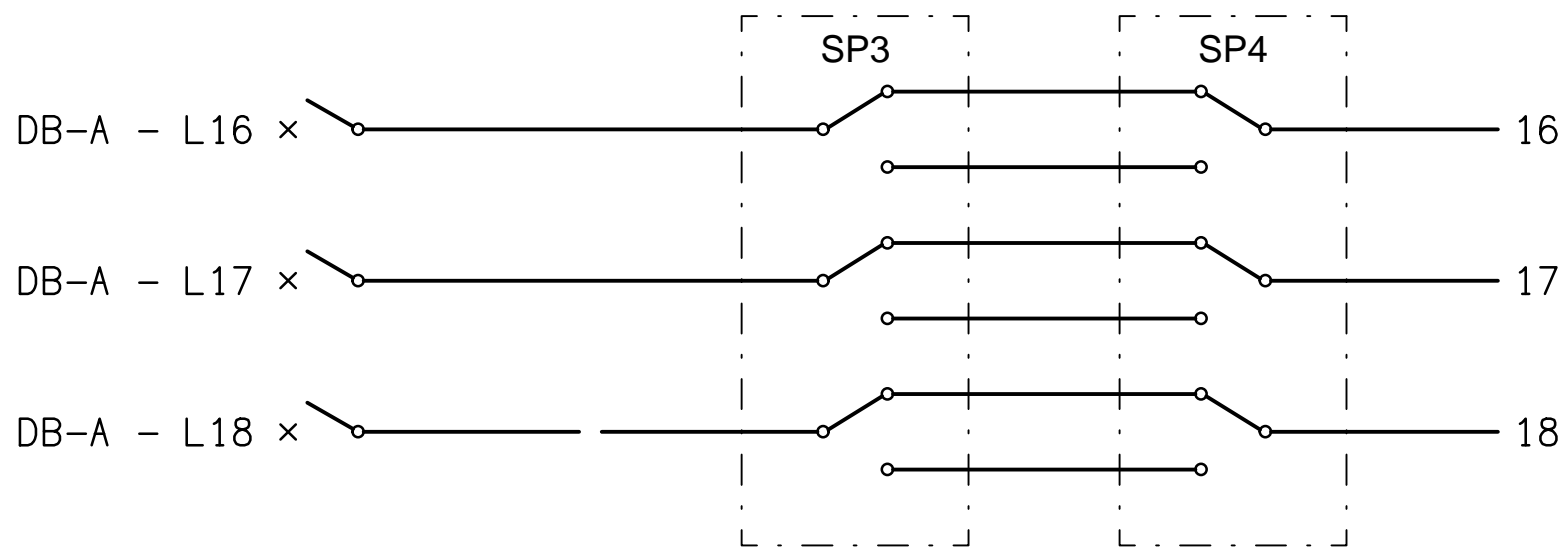


PROPOSED MSB  
SCHEMATIC  
NOT TO SCALE



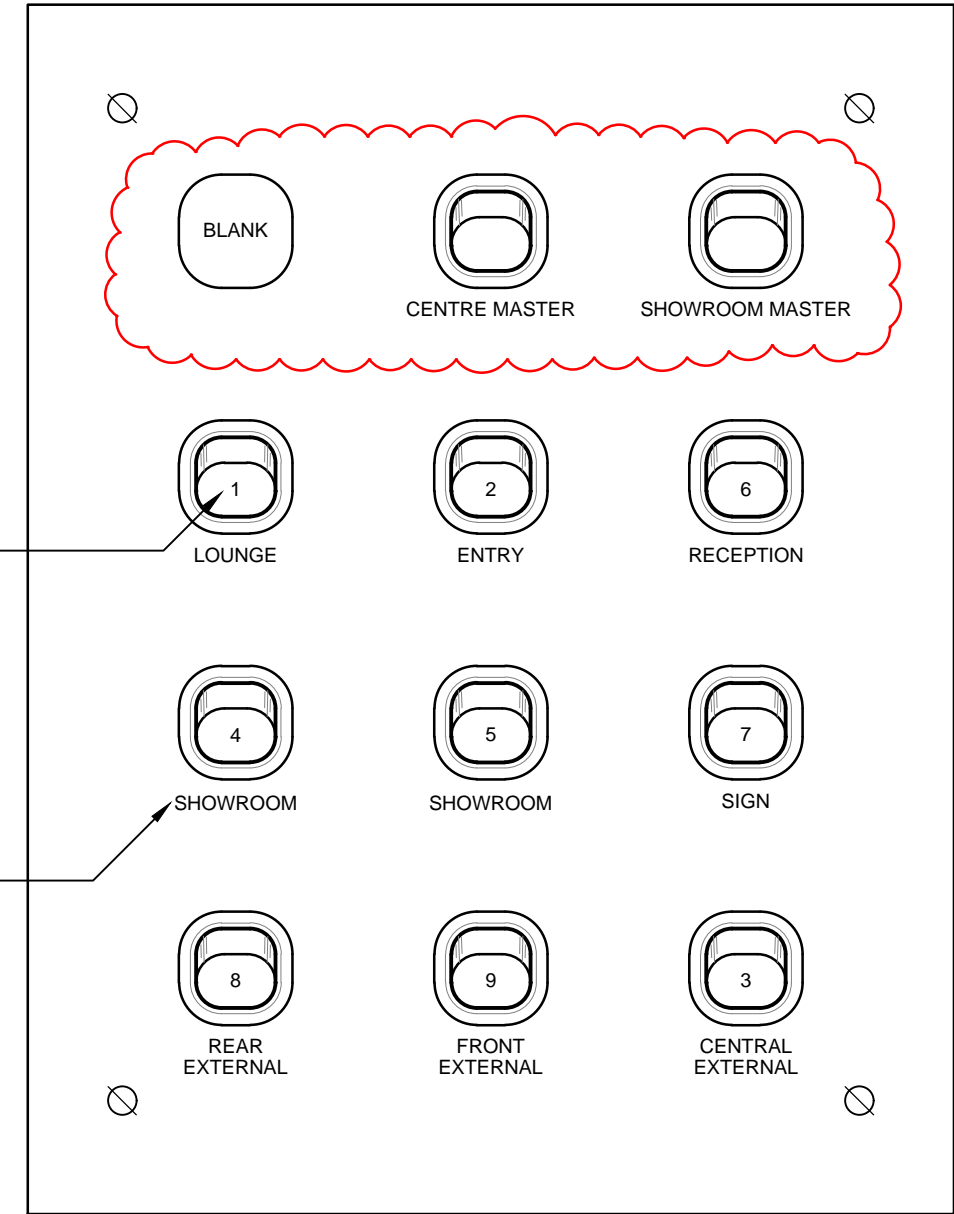
SCHEMATIC

SP1 / SP2 LIGHTING CONTROL  
NOT TO SCALE



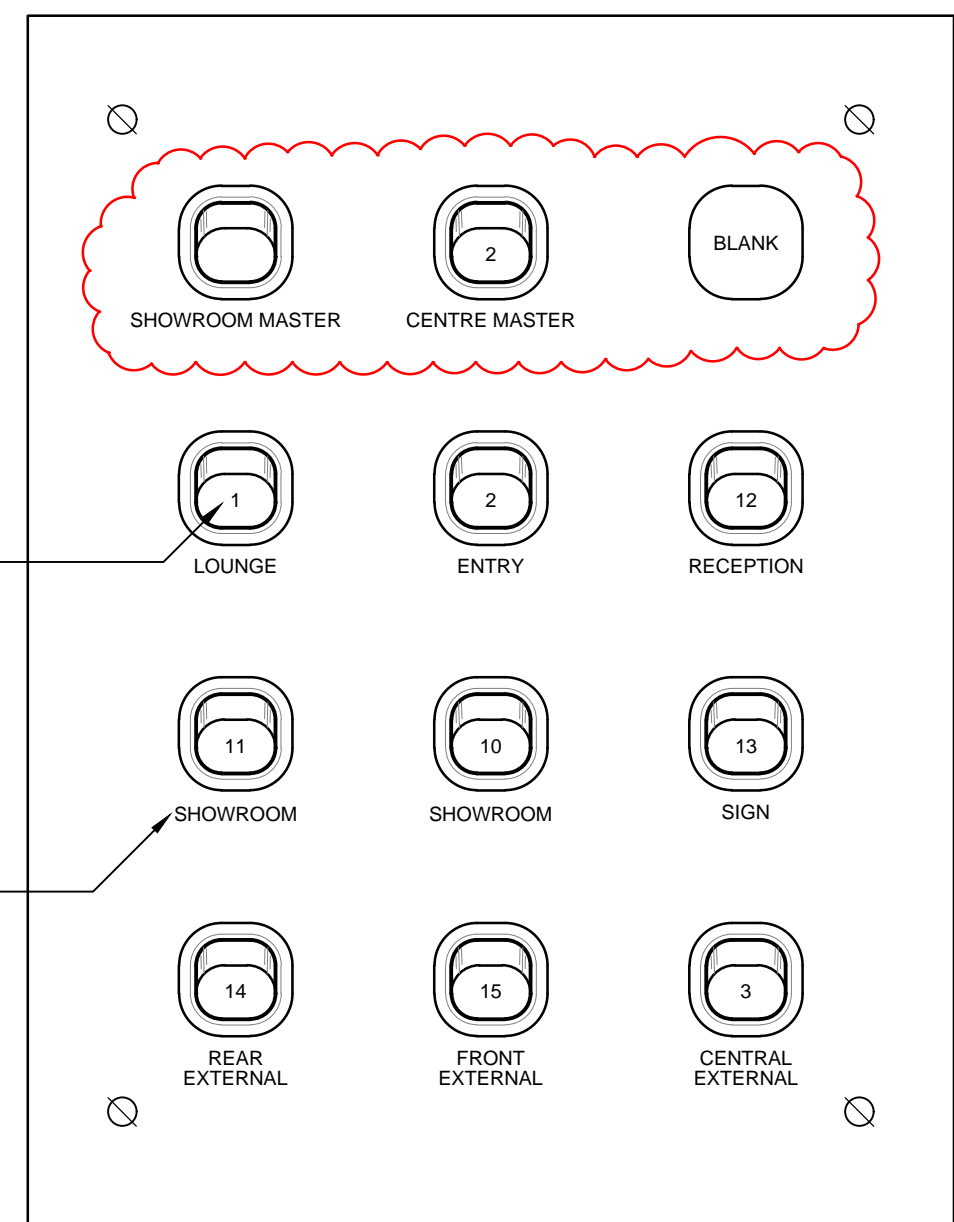
SCHEMATIC

SP3 / SP4 LIGHTING CONTROL  
NOT TO SCALE



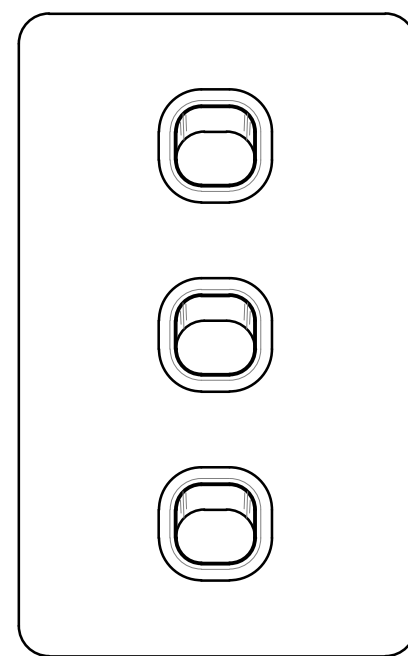
DETAIL

SP1 SWITCH PANEL ELEVATION  
NOT TO SCALE



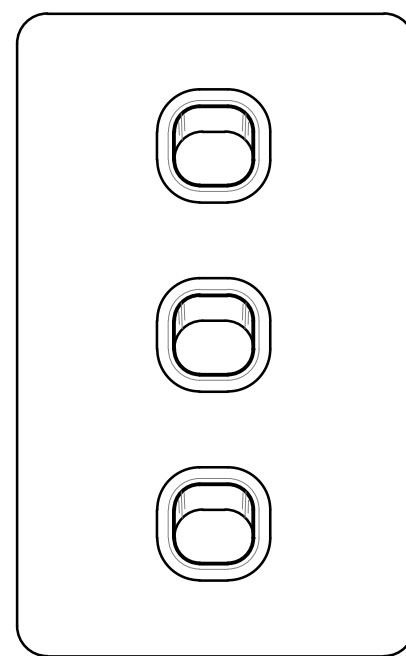
DETAIL

SP2 SWITCH PANEL ELEVATION  
NOT TO SCALE



DETAIL

SP3 SWITCH PANEL ELEVATION  
NOT TO SCALE



DETAIL

SP4 SWITCH PANEL ELEVATION  
NOT TO SCALE

ELECTRICAL DESIGN GROUP BRISBANE  
PTY LTD  
ACN 092 710 793  
TRADING AS:  
ELECTRICAL DESIGN GROUP

THE COPYRIGHT OF THIS DRAWING  
REMAINS THE PROPERTY OF THE  
ELECTRICAL DESIGN GROUP.  
USE FIGURED DIMENSIONS  
IN PREFERENCE TO SCALE.  
ALL DIMENSIONS TO BE  
VERIFIED ONSITE.

**ELECTRICAL DESIGN GROUP**  
ELECTRICAL BUILDING SERVICES CONSULTANTS  
BRISBANE GOLD COAST

P.O.Box 15, Sherwood Q.4075  
Phone: (07) 3278 4375  
Email: brisbane@edg.net.au  
Web: www.edg.net.au

PROJECT:  
**KEEMA SPRINGWOOD  
ADDITIONAL SHOWROOMS**

3519 PACIFIC HIGHWAY, SLACKS CREEK

D	CONSTRUCTION	18/07/2024
REV.	DESCRIPTION:	DATE:

DRAWING:  
**ELECTRICAL SERVICES  
SCHEMATICS & DETAILS**

SCALE:  
NOT TO SCALE AT A1

PROJECT NO:  
**C2857a**

DRAWING NO:  
**E08**

REVISION:  
**D**