



# ELECTRICAL DESIGN GROUP

ELECTRICAL BUILDING SERVICES CONSULTANTS

P.O. Box 15, SHERWOOD Q. 4075

Phone: (07) 3278 4375

Website: [www.edg.net.au](http://www.edg.net.au) Email: [brisbane@edg.net.au](mailto:brisbane@edg.net.au)

C2154a - ORMISTON COLLEGE - COVERED COURTS

C2154a-0001(B).xls

ELECTRICAL SERVICES CONTRACT DOCUMENT SCHEDULE

REVISION B - 03 NOVEMBER 2025

ISSUING INFORMATION				DATE OF ISSUE							
	DAY MONTH YEAR REASON FOR ISSUE	31	03								
		10	10								
		25	25								
		N	N								
A = APPROVAL      C = CONSTRUCTION      N = COORDINATION		P = PRELIMINARY		T = TENDER							

DISTRIBUTION			NUMBER OF COPIES							
WWW.EDG.NET.AU			1E	1E						
ROHRIG CONSTRUCTION			1E	1E						
P = PRINT    T = TRACING    D = DISC    E = EMAIL    F = FAX										

DOCUMENTS		REVISION							
C2154a-E01.dwg	LEGEND, NOTES & SITE PLAN	A	B						
C2154a-E02.dwg	FLOOR PLAN	A	B						
C2154a-0001.xls	CONTRACT DOCUMENT SCHEDULE	A	B						

NOTES

1. EXTENT OF WORKS

THE ELECTRICAL SERVICES SUB-CONTRACT INCLUDES BUT IS NOT LIMITED TO THE FOLLOWING:

- SUPPLY AND INSTALLATION OF ALL COMPONENTS FORMING PART OF THE ELECTRICAL SERVICES.
- CO-ORDINATION.
- INSPECTIONS.
- TESTING AND COMMISSIONING.
- MAINTENANCE.
- CABLING, CABLE SUPPORT SYSTEMS AND ACCESS.
- POWER DISTRIBUTION.
- LIGHTING.
- ALL MINOR COMPONENTS AND INCIDENTAL WORKS NOT SPECIFICALLY REFERRED TO, HOWEVER NECESSARY TO COMPLETE THE ELECTRICAL SERVICES INSTALLATION SUCH THAT IT IS HANDED OVER COMPLETE, OPERATIONAL AND FIT FOR THE INTENDED USE.

PRIOR TO COMMENCING WORK CONSULT SITE MANAGEMENT FOR ANY HAZARDOUS MATERIAL AND OR ASBESTOS REGISTERS AS WELL AS UNDERTAKE A THOROUGH INSPECTION OF THE SITE TO IDENTIFY ANY POTENTIAL HAZARDOUS MATERIALS, ASBESTOS AND HEALTH OR SAFETY RISKS. ADVISE THE CONTRACTOR OF ANY POTENTIAL HAZARDOUS MATERIALS, ASBESTOS AND HEALTH OR SAFETY RISKS IF IDENTIFIED AND DO NOT COMMENCE WORK UNTIL AN APPROPRIATE MANAGEMENT PLAN HAS BEEN DEVELOPED AND AGREED TO BY ALL PARTIES.

SUPPLY ALL LABOUR, MATERIALS, EQUIPMENT, AND ALL OTHER ITEMS, WHETHER MENTIONED IN DETAIL OR NOT, REQUIRED FOR THE SATISFACTORY COMPLETION OF THE ELECTRICAL SERVICES INSTALLATION, LEAVING IN FULL WORKING ORDER TO THE SATISFACTION OF THE PROJECT MANAGER.

ACCEPT FULL RESPONSIBILITY FOR LIASING, ARRANGING AND CO-ORDINATION ALL WORKS THAT HAVE AN EFFECT ON OR WILL BE AFFECTED BY THE ELECTRICAL SERVICES.

REMOVE ALL OF THE EXISTING ELECTRICAL SERVICES THAT BECOME REDUNDANT DUE TO THE WORKS.

2. WORKMANSHIP

ENSURE THAT THE WORK IS PERFORMED BY THE HOLDER OF A CURRENT ELECTRICAL SUB CONTRACTOR LICENSE. ENSURE THE INSTALLATION AND ALL COMPONENTS, FIXTURES, FITTINGS, OUTLETS AND CABLES ARE SUPPLIED AND INSTALLED TO A HIGH STANDARD THROUGHOUT, AND INSTALLED IN A NEAT AND TRADESMAN LIKE MANNER, TO THE CURRENT INDUSTRY STANDARDS. ENSURE ALL MATERIALS AND COMPONENTS OF A SIMILAR TYPE ARE OF THE SAME MANUFACTURER AND INSTALLED IN A UNIFORM MANNER.

IT IS THE ELECTRICAL SUB CONTRACTOR'S RESPONSIBILITY TO ENSURE THAT THE INSTALLATION IS FIT FOR PURPOSE AND IS PROVIDED AS A COMPLETE WORKING INSTALLATION. IT IS THE ELECTRICAL SUB CONTRACTOR'S RESPONSIBILITY TO PROVIDE ALL COMPONENTS, FITTINGS, FIXTURES, SYSTEMS, PROGRAMMING ETC IRRESPECTIVE OF THE LEVEL DETAILED IN THE DOCUMENTS SUCH THAT THE INSTALLATION IS PROVIDED AS A COMPLETE WORKING INSTALLATION.

CONCEAL ALL WIRING AND CONDUITS. EXPOSED CABLING OR CONDUITS ARE GENERALLY NOT ACCEPTABLE. IT IS NOTED THAT CHASING AND REINSTATEMENT WILL BE REQUIRED. ENSURE ALL COMPONENTS, EQUIPMENT AND MATERIALS SUPPLIED ARE NEW, UNUSED, DESIGNED AND SELECTED TO ENSURE SATISFACTORY OPERATION UNDER VARYING ATMOSPHERIC, CLIMATIC, HUMID TROPICAL CONDITIONS WITHOUT DISTORTION AND DETERIORATION IN ANY PART AFFECTING EFFICIENCY AND RELIABILITY OF THE SYSTEMS. DESIGN AND SELECT ALL EQUIPMENT TO PROVIDE THE NECESSARY SAFETY TO HUMAN LIFE AND PROPERTY DURING OPERATION AND MAINTENANCE WITH PARTICULAR ATTENTION GIVEN TO ELECTRICAL SAFETY AND SEGREGATION PRECAUTIONS.

CHECK THE FINISHED PAINTWORK AROUND THE AREA OF EACH INSTALLATION AND TOUCH UP ALL DAMAGED PARTS AND FINISHES AFTER THE INSTALLATION OF THE ELECTRICAL SERVICES.

ALL WORKS ARE TO BE CARRIED OUT IN ACCORDANCE WITH THE BUILDER'S PROGRAM. ENSURE ALL FINAL LOCATIONS OF OUTLETS AND FITTINGS ARE CO-ORDINATED ONSITE WITH THE ARCHITECT AND ALL OTHER SERVICES, TO THE APPROVAL OF THE PROJECT MANAGER. ALLOW TO CO-ORDINATE THE FINAL LOCATION OF ALL EQUIPMENT, FITTINGS, & OUTLETS, SUCH THAT THEY ARE INSTALLED IN ACCORDANCE WITH THE AS3000 RESTRICTED ZONES, AND ARE NOT COVERED INAPPROPRIATELY.

ENSURE THAT ALL METAL SURFACES ARE SUITABLY PROTECTED AGAINST CORROSION, AND THAT ALL PLASTIC MATERIALS ARE UV STABILISED.

PROVIDE ALL MATERIALS AS NEW, AND OF THE HIGHEST CLASS AVAILABLE FOR THEIR RESPECTIVE TYPES. ENSURE ALL ASPECTS OF THE WORK ARE OF A HIGH STANDARD THROUGHOUT, AND INSTALLED IN A NEAT AND TRADESMAN LIKE MANNER, TO THE CURRENT INDUSTRY STANDARDS.

3. STANDARDS

IRRESPECTIVE OF INFORMATION CONTAINED IN THE ELECTRICAL SERVICES DOCUMENTS OR IN INSTRUCTIONS, IT IS THE ELECTRICAL SUB CONTRACTOR'S RESPONSIBILITY TO ENSURE ALL ELECTRICAL SERVICES WORKS ARE INSTALLED IN ACCORDANCE WITH THE REQUIREMENTS OF THE FOLLOWING. REFER ANY DISCREPANCIES BETWEEN THE REQUIREMENTS OF THE FOLLOWING AND/OR THE ELECTRICAL SERVICES DOCUMENTS AND INSTRUCTIONS TO THE ARCHITECT FOR CLARIFICATION PRIOR TO THE PLACING OF ORDERS, FABRICATION OR INSTALLATION OF THE ITEMS/METHODS IN DISCREPANCY.

- NCC BUILDING CODE OF AUSTRALIA.
- ELECTRICITY ACT.
- ELECTRICAL SAFETY ACT.
- AS/NZS3000.
- AS3008.
- WORKPLACE HEALTH AND SAFETY ACT.
- TELECOMMUNICATIONS ACT.
- ACMA REQUIREMENTS.

4. AUTHORITIES

ENSURE ALL OF THE ELECTRICAL SERVICES COMPLY WITH THE REQUIREMENTS OF ALL REGULATORY AUTHORITIES HAVING JURISDICTION OVER THE SITE INCLUDING BUT NOT LIMITED TO THE FOLLOWING:

- ACMA.
- LOCAL COUNCIL.
- LOCAL SUPPLY AUTHORITY.
- STATE GOVERNMENT DEPARTMENT OF ENVIRONMENT AND HERITAGE.
- QLD GOVERNMENT, DIVISION OF WORKPLACE, HEALTH AND SAFETY.
- QLD FIRE AND RESCUE AUTHORITY.

5. CABLES

UNLESS OTHERWISE SPECIFIED, INSTALL AND TERMINATE CABLES IN ACCORDANCE WITH THE MANUFACTURERS' RECOMMENDATIONS. DETERMINE THE FINAL ROUTES TO SUIT THE BUILDING STRUCTURE AND SITE CONDITIONS. UNLESS NOTED OTHERWISE, PROVIDE ALL 240 VOLT POWER AND LIGHTING WIRING AS 2.5mm<sup>2</sup> TWIN & EARTH STRANDED COPPER CONDUCTORS, PVC INSULATED 0.6/1kV V75 GRADE TO AS3174, PROTECTED BY A 20 AMP CIRCUIT BREAKER. ALL CONDUIT AND FITTINGS TO BE RIGID UPVC TO AS2053, UNLESS NOTED OTHERWISE.

LEGEND



L1: PROVIDE THE L1 FITTING AS A TRILUX MIRONA 6819851.BPOJT WITH SOLID FIXING TO THE STRUCTURE CONFIGURED SUCH THAT THE FITTING IS HORIZONTAL HARD UNDER THE STRUCTURE.



L2: PROVIDE THE L2 FITTING AS A TRILUX MIRONA 6819551 BPOJT WITH A WALL MOUNT BRACKET WITH SOLID FIXING TO THE STRUCTURE CONFIGURED SUCH THAT THE FITTING IS HORIZONTAL TO THE SIDE OF THE STRUCTURE.



A1: PROVIDE POINT A1 AS A 100 X 100 STAINLESS STEEL IP66 JUNCTION BOX AT 300 AFFL LOCATED ON THE OUTSIDE FACE OF THE COLUMN CONNECTED TO THE EXISTING EXTERNAL RISER ON THE JUNIOR ARTS CENTRE BUILDING 32 VIA TWO 50MM DIA COMMUNICATIONS CONDUITS C/W DRAW WIRES.



A2: PROVIDE POINT A2 AS A CLIPSAL 56C310-GY OUTLET MOUNTED ON THE STRUCTURE LEVEL WITH THE PROPOSED SCORE BOARD.



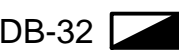
A3: PROVIDE POINT A2 AS A CLIPSAL 56C310-GY OUTLET MOUNTED ON THE STRUCTURE AT HIGH LEVEL IMMEDIATELY BELOW THE ROOF.



LCP: PROVIDE THE LCP AS A MANUAL 20 AMP IP66 LIGHT SWITCH CONTROLLING THE NEW LIGHTING CIRCUIT. MOUNT THE LCP ON THE EASTERN SIDE OF COLUMN WITHIN AT 1000 AFFL.



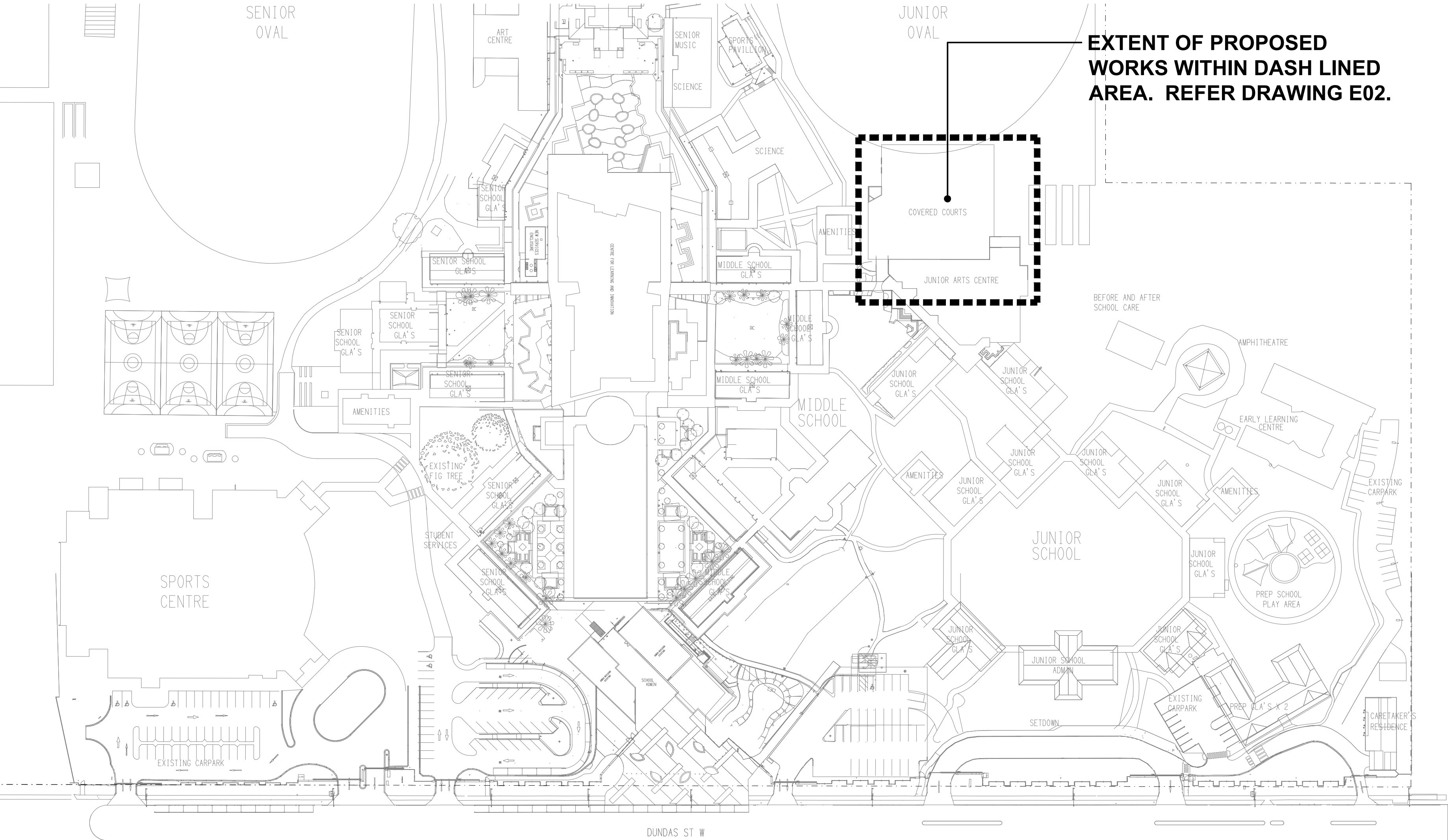
RISER: UTILISE THE EXISTING JUNIOR ARTS CENTRE BUILDING 32 EXTERNAL RISER TO ACCOMMODATE THE NEW ACCESS CONDUITS. THE NEW POWER CIRCUITS ARE TO BE RUN WITHIN THE RISER WITHIN CONDUIT.



DB-32 UPGRADE THE EXISTING JUNIOR ARTS CENTRE BUILDING 32 DISTRIBUTION BOARD DB-32 WITH NEW SWITCHGEAR TO ACCOMMODATE THE TWO NEW CIRCUITS. THE NEW SWITCHGEAR IS TO MATCH THE EXISTING IN MANUFACTURER AND STYLE. UPDATE THE SCHEDULE WITH THE CIRCUIT USE AND LOCATION.

PROVIDE A NEW 6MM TPS CIRCUIT CONTROLLED VIA A 20 AMP RCBO LOCATED IN DB-32 TO SUPPLY THE NEW L1 AND L2 FITTINGS. CONTROL THE CIRCUIT VIA AN ADJUSTABLE PE CELL AND A TIME CLOCK SUCH THAT POWER TO THE LIGHTS IS AUTOMATICALLY ISOLATED BETWEEN 10.00PM AND DUSK. RETICULATE THE CIRCUIT CONCEALED THROUGH BUILDING 32 TO THE RISER, THEN VIA NEW CONDUIT WITHIN THE RISER THEN UNDERGROUND INTO THE FIRST POLE. ALL POWER CABLING TO THE LIGHTING CONTROL PANEL AND THE LIGHTS IS TO BE RUN CONCEALED WITHIN THE STRUCTURE.

PROVIDE A NEW 6MM TPS CIRCUIT CONTROLLED VIA A 20 AMP RCBO LOCATED IN DB-32 TO SUPPLY THE NEW COURT GPoS RETICULATE THE CIRCUIT CONCEALED THROUGH BUILDING 32 TO THE RISER, THEN VIA NEW CONDUIT WITHIN THE RISER THEN UNDERGROUND INTO THE FIRST POLE. ALL POWER CABLING TO THE LIGHTING CONTROL PANEL AND THE LIGHTS IS TO BE RUN CONCEALED WITHIN THE STRUCTURE.



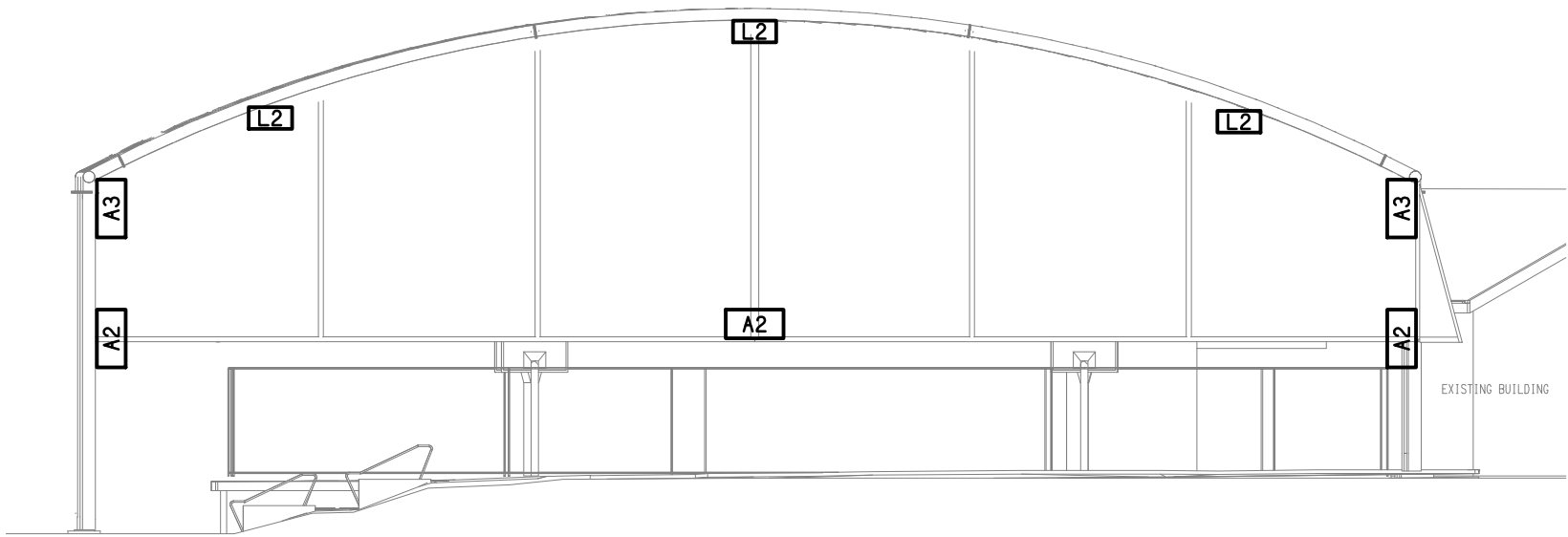
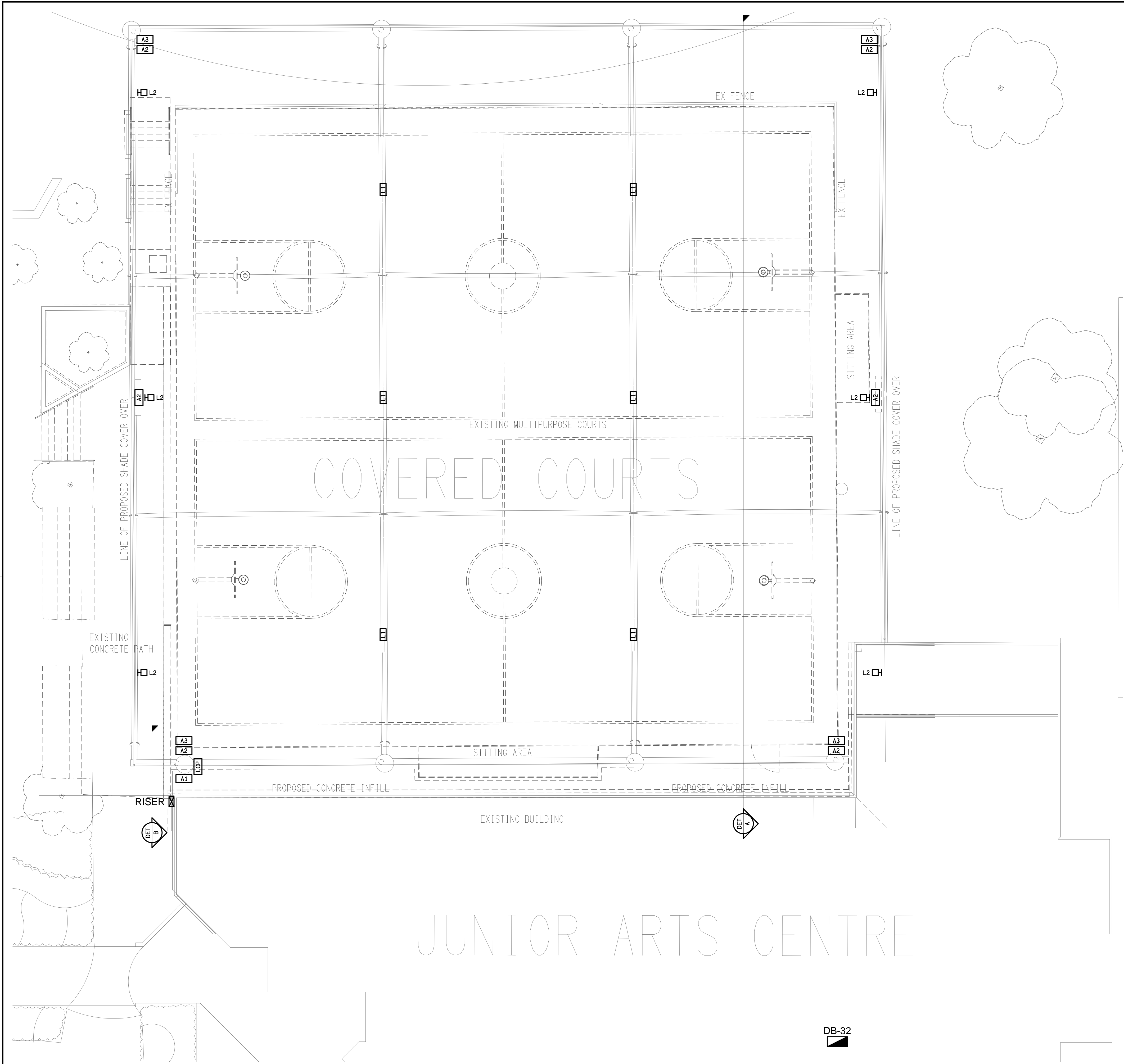
SITE PLAN

COVERED COURTS

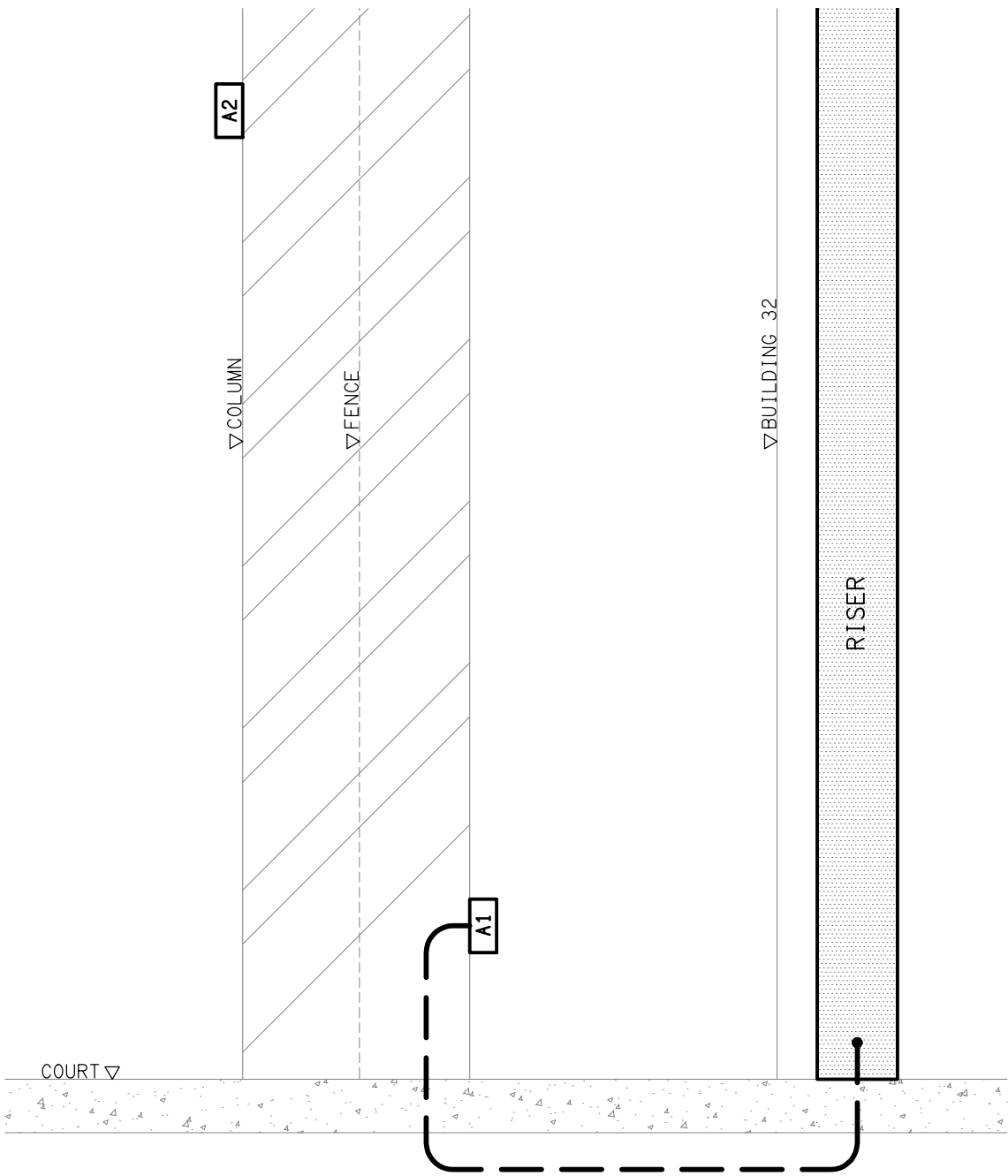
SCALE 1: 1000

EXTENT OF PROPOSED WORKS WITHIN DASH LINED AREA. REFER DRAWING E02.

ELECTRICAL DESIGN GROUP BRISBANE PTY LTD ACN 092 710 793		THE COPYRIGHT OF THIS DRAWING REMAINS THE PROPERTY OF THE ELECTRICAL DESIGN GROUP.		PROJECT: ORMISTON COLLEGE - COVERED COURTS		B INFORMATION 03/11/2025	
TRADING AS: ELECTRICAL DESIGN GROUP		USE FIGURED DIMENSIONS IN PREFERENCE TO SCALE.		REV: 1		REV: DESCRIPTION: DATE:	
ALL DIMENSIONS TO BE VERIFIED ONSITE.		ELECTRICAL DESIGN GROUP BRISBANE GOLD COAST		DRAWING: ELECTRICAL SERVICES LEGEND, NOTES & SITE PLAN		DRAWING: 1: AS SHOWN AT A1	
P.O.Box 15, Sherwood Q.4075 Phone: (07) 3278 4375 Email: brisbane@edg.net.au Web: www.edg.net.au		97-127 DUNDAS STREET, ORMISTON		PROJECT NO: C2154a		DRAWING NO: E01	
						REVISION: B	



DETAIL A  
COVERED COURTS SECTION  
SCALE 1: 200



DETAIL B  
A1 / A2 / RISER SECTION  
NOT TO SCALE

ELECTRICAL DESIGN GROUP BRISBANE  
PTY LTD  
ACN 092 710 793  
TRADING AS:  
ELECTRICAL DESIGN GROUP

THE COPYRIGHT OF THIS DRAWING  
REMAINS THE PROPERTY OF THE  
ELECTRICAL DESIGN GROUP.  
USE FIGURED DIMENSIONS  
IN PREFERENCE TO SCALE.  
ALL DIMENSIONS TO BE  
VERIFIED ONSITE.

**ELECTRICAL DESIGN GROUP**  
ELECTRICAL BUILDING SERVICES CONSULTANTS  
BRISBANE GOLD COAST

P.O.Box 15, Sherwood Q.4075  
Phone: (07) 3278 4375  
Email: brisbane@edg.net.au  
Web: www.edg.net.au

PROJECT:  
**ORMISTON COLLEGE - COVERED COURTS**  
97-127 DUNDAS STREET, ORMISTON

B INFORMATION		03/11/2025
REV:	DESCRIPTION:	DATE:
DRAWING: <b>ELECTRICAL SERVICES FLOOR PLAN</b>		
SCALE: 1:100 UNO	AT A1	PROJECT NO: <b>C2154a</b>
		DRAWING NO: <b>E02</b>
		REVISION: <b>B</b>