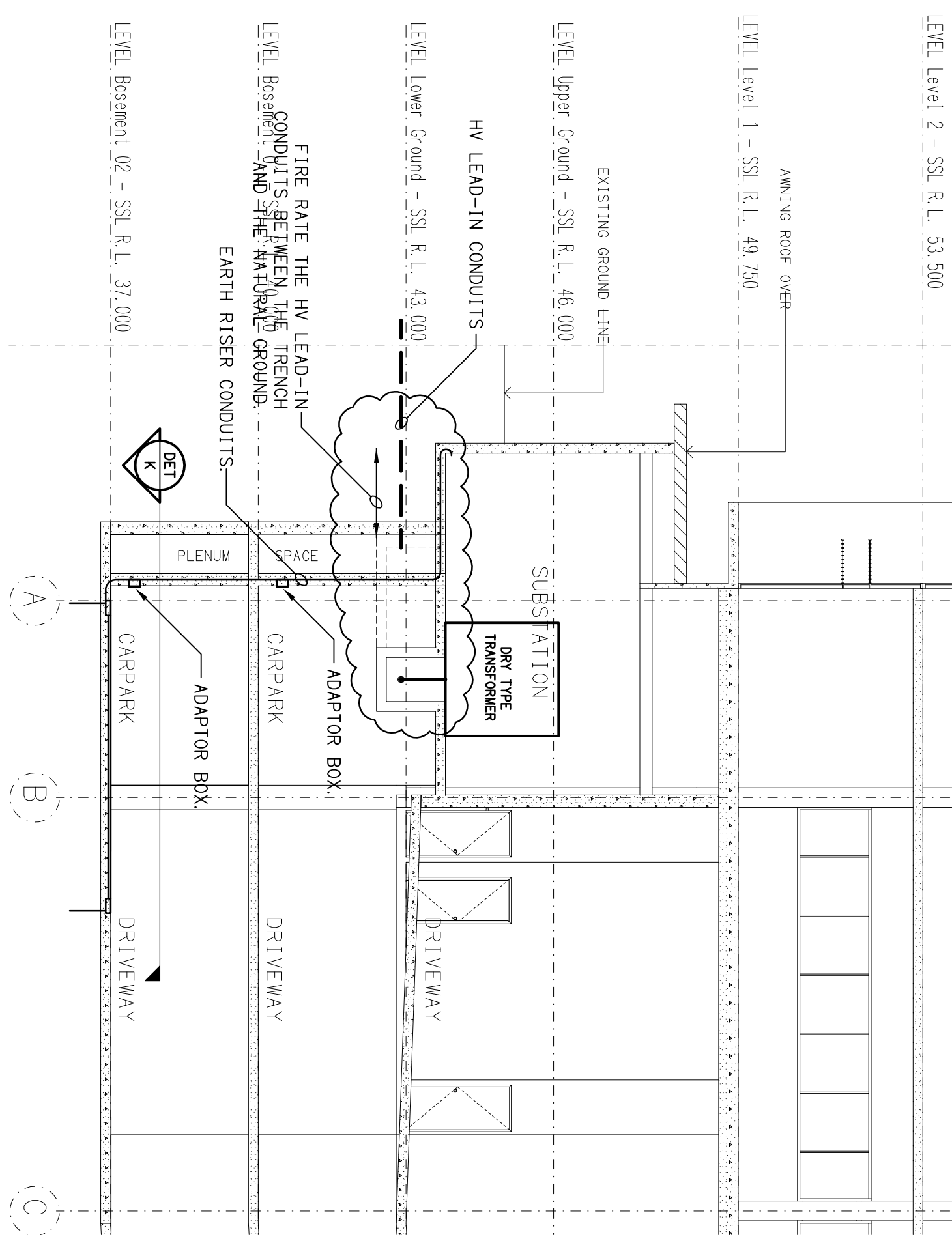
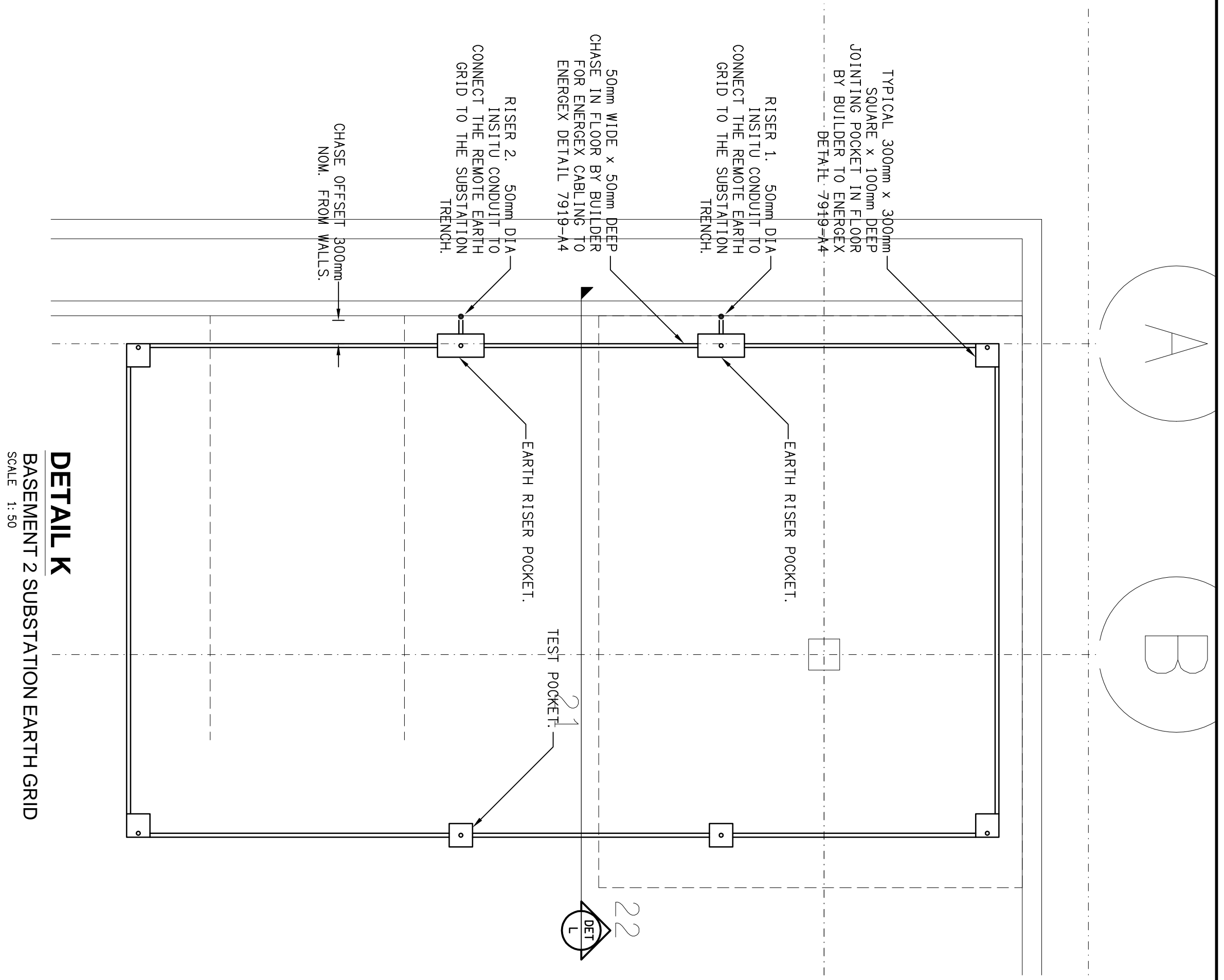
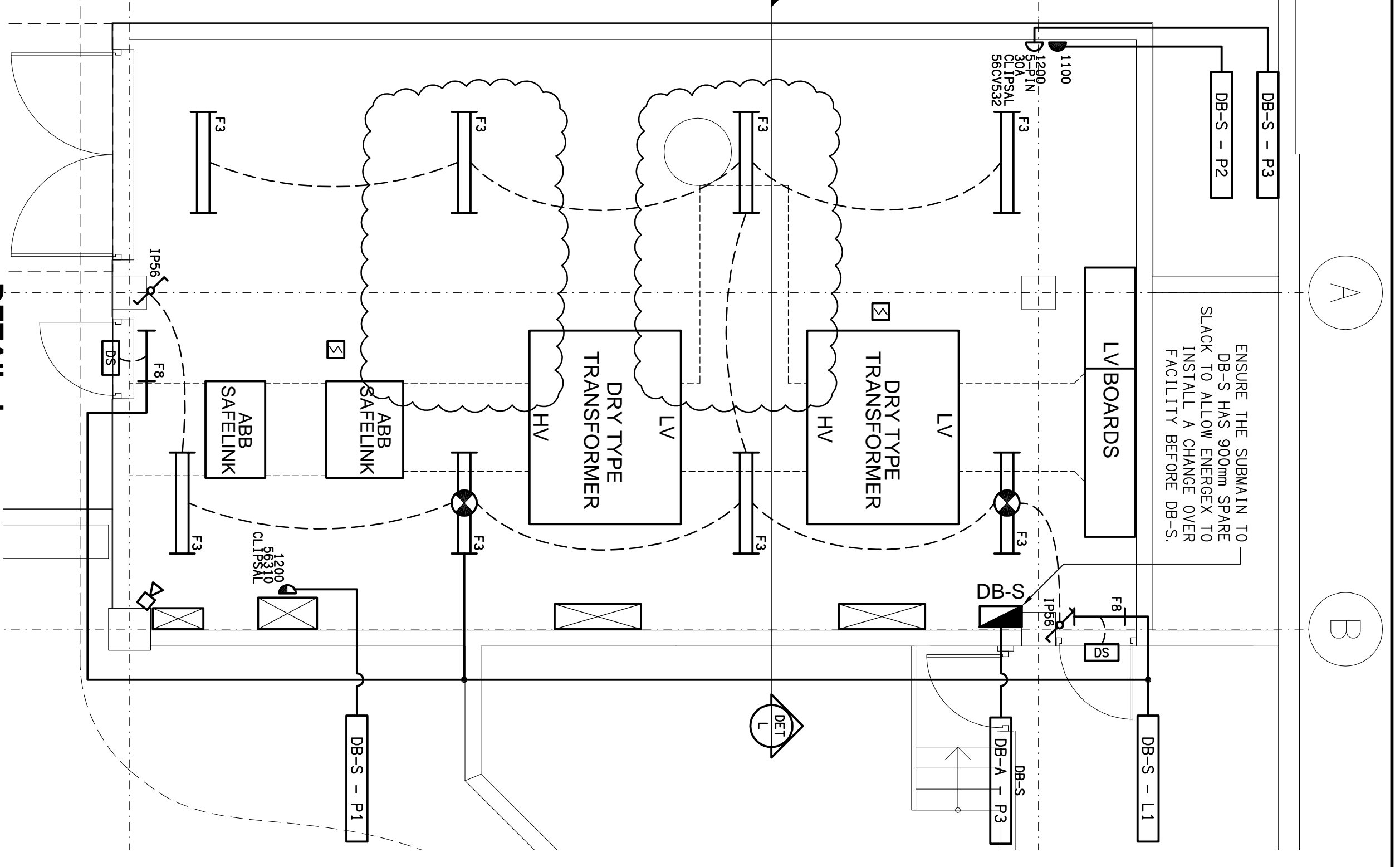


ELECTRICAL DESIGN GROUP BRISBANE
 PTY LTD
 ADVISOR 710 793
 TRADING AS
 ELECTRICAL DESIGN GROUP

THE COPYRIGHT OF THIS DRAWING
 REMAINS THE PROPERTY OF THE
 ELECTRICAL DESIGN GROUP
 USE FIGURED DIMENSIONS
 IN PREFERENCE TO SCALE.
 ALL DIMENSIONS TO BE
 VERIFIED ON SITE.

LEGEND
 FOR ENERGEX USE ONLY

	SINGLE GPO 10 AMP.
	DOUBLE GPO 10 AMP.
	3 PHASE SOCKET OUTLET.
	TWO-WAY LIGHT SWITCH.
	TWO-WAY DOOR SWITCH.
	AS1670 SMOKE DETECTOR.
	AS2293 EVACUATION HORN.
	2 x 36W FLUORESCENT DIFFUSED BATTEN LIGHT FITTING. SURFACE MOUNTED.
	1 x 18W FLUORESCENT DIFFUSED BATTEN LIGHT FITTING. SURFACE MOUNTED.



ELECTRICAL DESIGN GROUP
 ELECTRICAL COMMUNICATIONS FIRE SYSTEMS DESIGNERS
 BRISBANE
 P.O. Box 15, Sharnood Q.4075
 Phone: (07) 3278 4375
 Fax: (07) 3716 0222

GOLD COAST
 P.O. Box 4248, Ashmore Q.4214
 Phone: (07) 5597 7551
 Fax: (07) 5597 7552

Product:
SYNERGY

LOTS 30 & 31 MUSK AVENUE, KELVIN GROVE URBAN VILLAGE

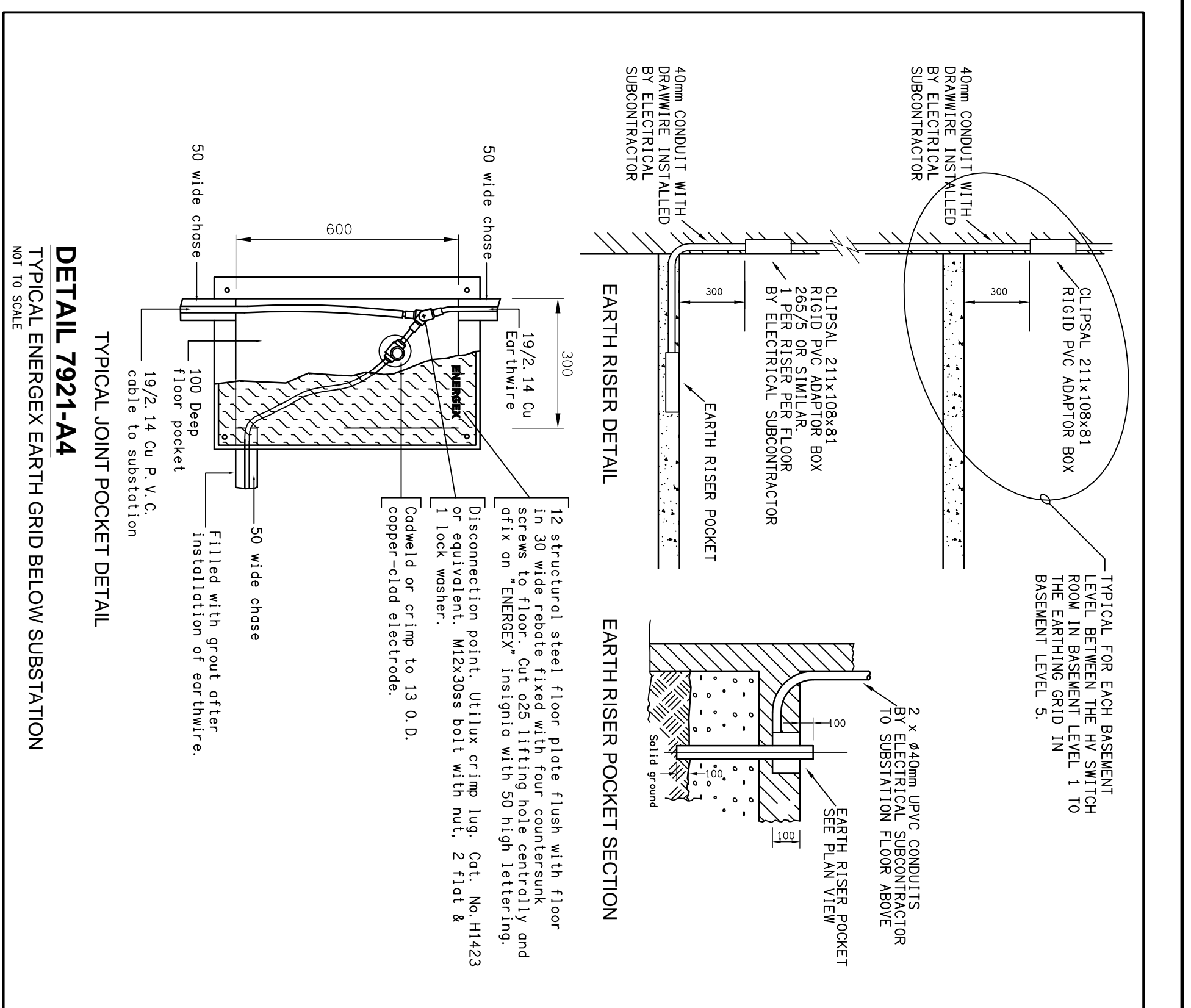
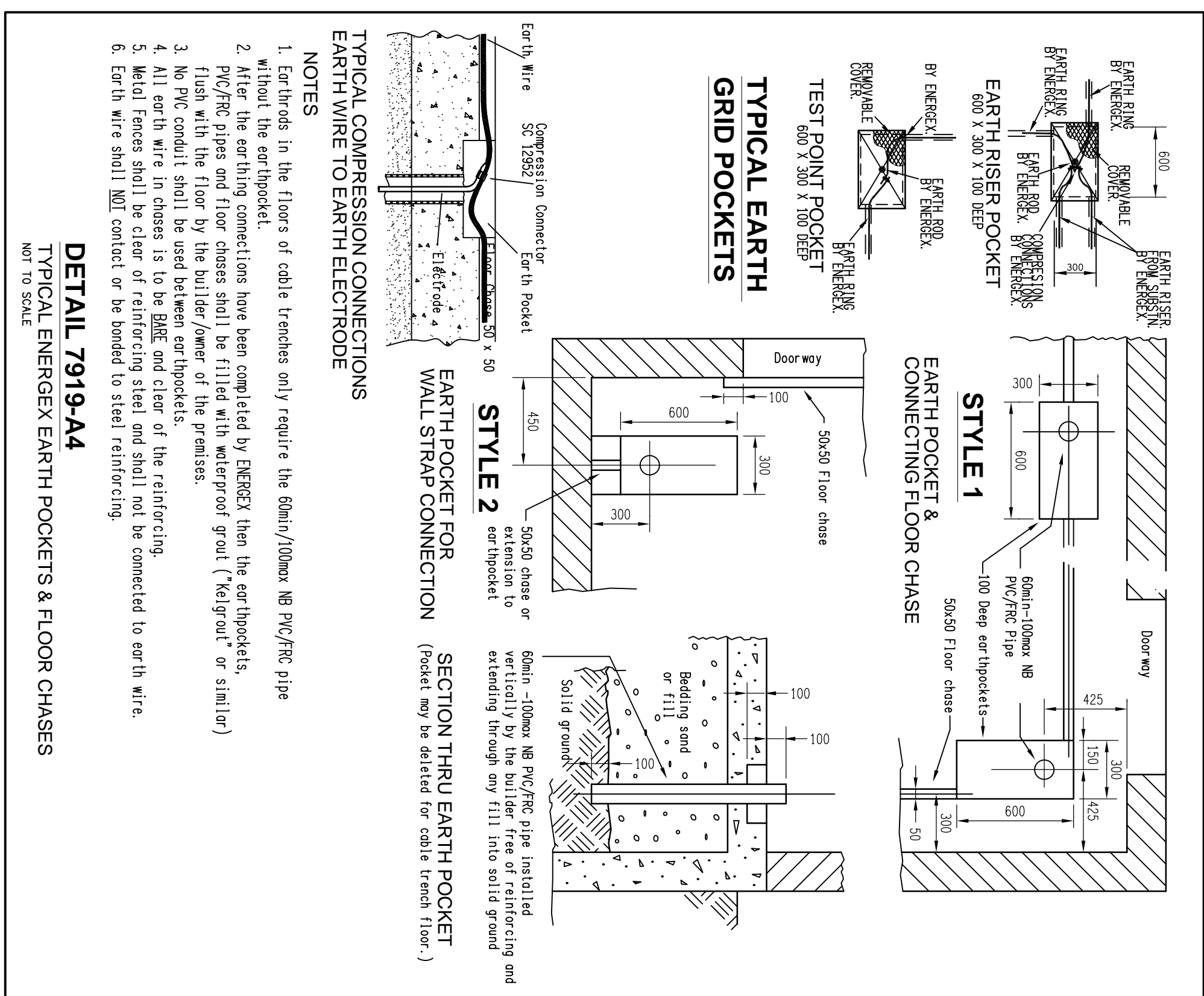
Project:
ELECTRICAL SERVICES
 ENERGEX SUBSTATION ARRANGEMENTS

Scale:
 AS SHOWN AT A1

Product No:
C04982a

Drawing No:
E19

Revision:
F



REV.	DESCRIPTION	DATE
F	CONSTRUCTION	11/12/2007