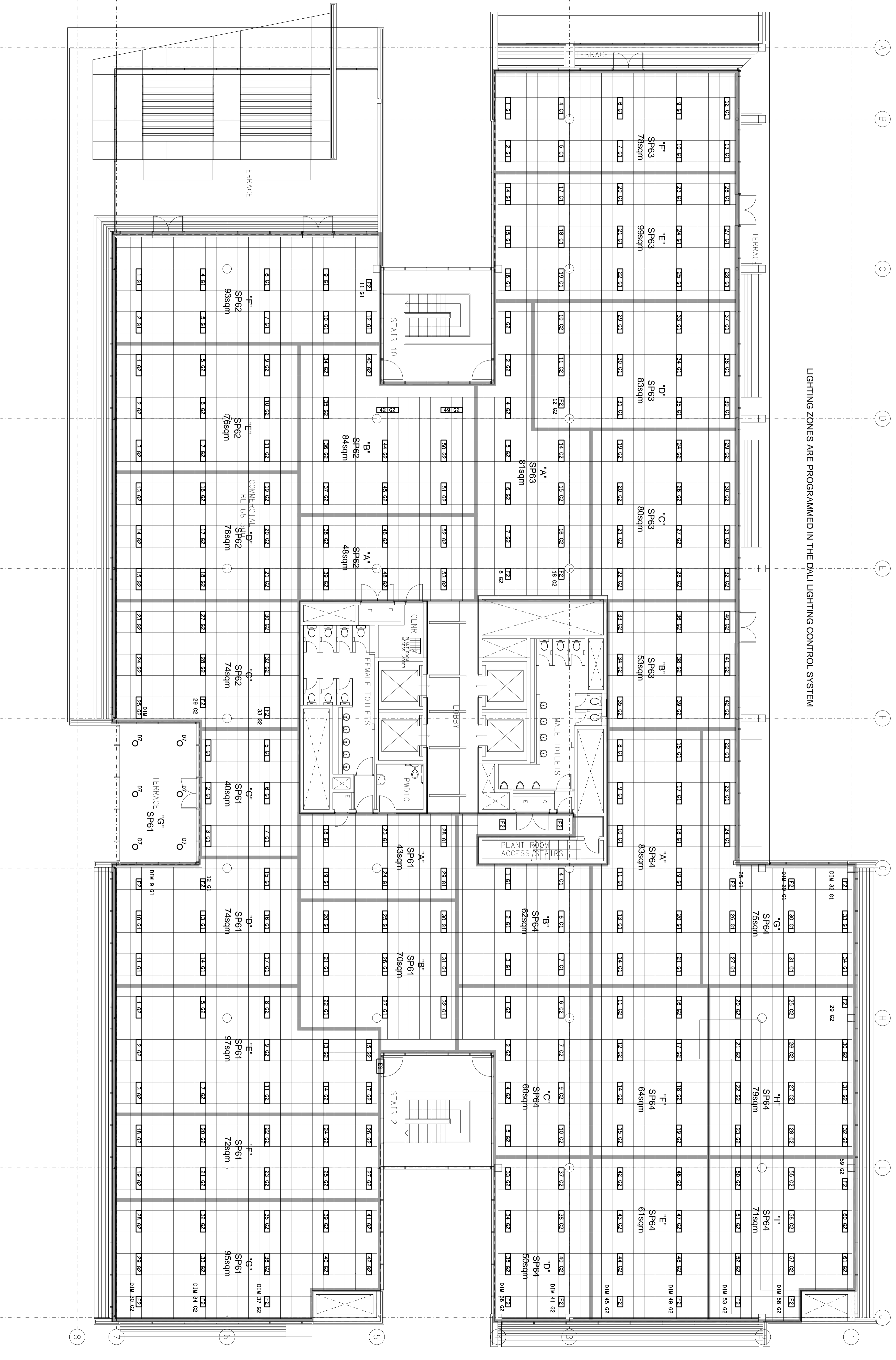


LIGHTING ZONES ARE PROGRAMMED IN THE DALI LIGHTING CONTROL SYSTEM



- NOTE 1: [Symbol] TYPICAL LUMINAIRE TYPE FL 5 = GATEWAY DEVICE No. 5
- NOTE 2: INTERNAL LIGHTING ZONES ARE CONTROLLED BY SWITCHES AT THE SP SWITCH PANELS.
- NOTE 3: PERIMETER LIGHTING ZONES CONTROLLED BY LIGHT SENSORS.

ELECTRICAL CONTRACTOR:



**ELECTRICAL PTY LTD**  
 163 Jackson Road  
 Sturgesville Hills  
 Queensland 4709  
 Phone : (07) 3945 6566  
 Fax : (07) 3945 6577

PROJECT:

**SYNERGY**

LOTS 30 & 31 MUSK AVENUE, KELVIN GROVE URBAN VILLAGE

REV:	R	UPDATED AS INSTALLED	DATE:	27/03/2009
DESCRIPTION:	ELECTRICAL SERVICES			
DESCRIPTION:	LEVEL 6 FLOOR / REFLECTED CEILING PLAN			
SCALE:	1:100			
PROJECT NO.:	C0498a			
DRAWING NO.:	E12			
REVISION:	R			