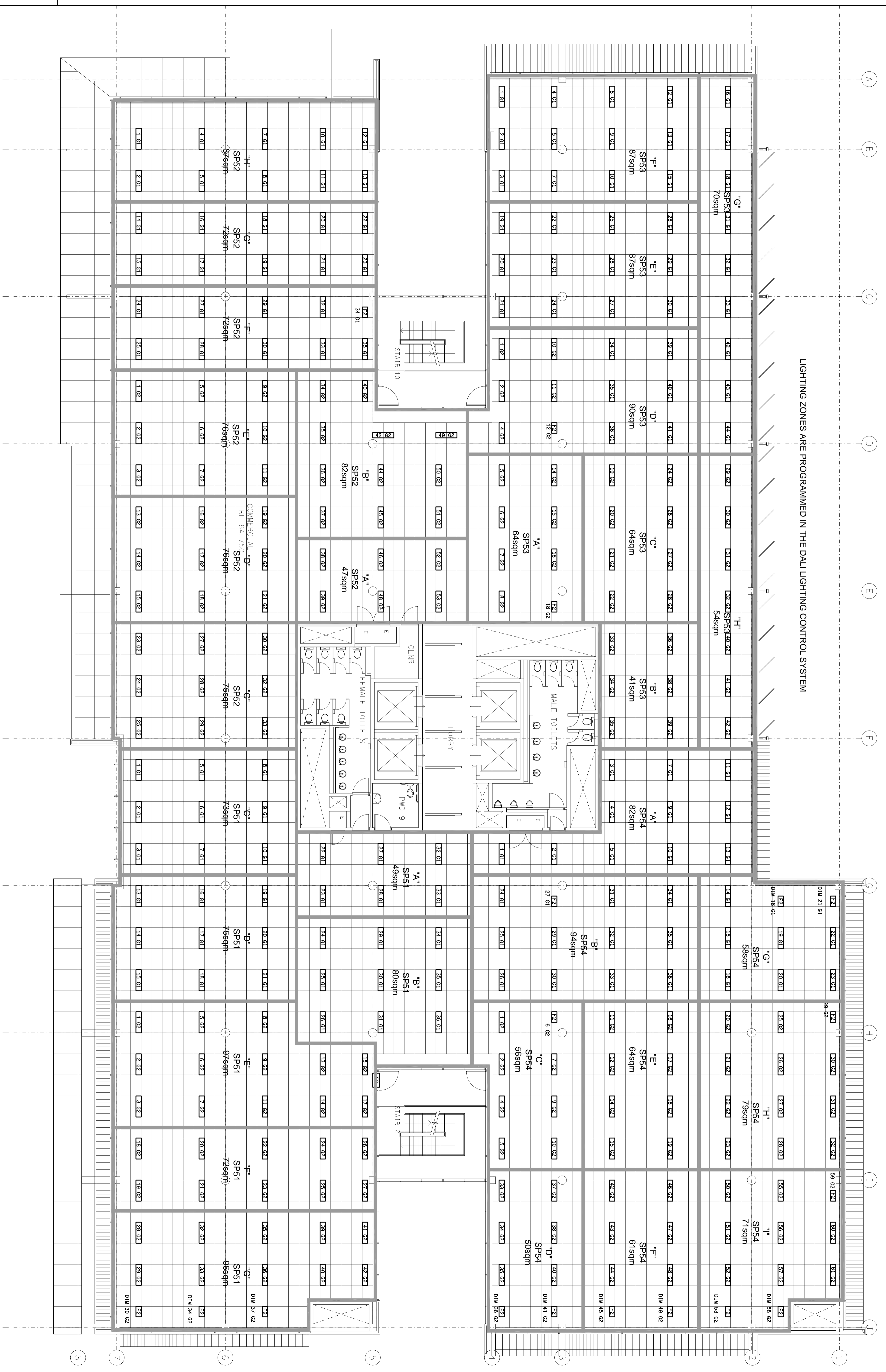
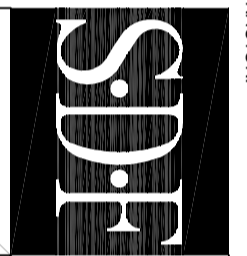


LIGHTING ZONES ARE PROGRAMMED IN THE DALI LIGHTING CONTROL SYSTEM



- NOTE 1: [Symbol] TYPICAL LUMINAIRE TYPE FL 5 = GATEWAY DEVICE No. 5
- NOTE 2: INTERNAL LIGHTING ZONES ARE CONTROLLED BY SWITCHES AT THE SP (SWITCH PANELS).
- NOTE 3: PERIMETER LIGHTING ZONES CONTROLLED BY LIGHT SENSORS.

ELECTRICAL CONTRACTOR:



**ELECTRICAL PTY LTD**  
 163 Jackson Road  
 Sturgesbank Hills  
 Queensland 4709  
 Phone : (07) 3945 6566  
 Fax : (07) 3945 6577

PROJECT: **SYNERGY**  
 LOTS 30 & 31 MUSK AVENUE, KELVIN GROVE URBAN VILLAGE

REV.	DESCRIPTION	DATE
0	UPDATED AS INSTALLED	27/03/2009

DRAWING: **ELECTRICAL SERVICES**  
**LEVEL 5**  
**FLOOR / REFLECTED CEILING PLAN**  
 SCALE: 1:100  
 PROJECT NO: **C0498a**  
 DRAWING NO: **E11**  
 REVISION: **Q**